



NORTHERN ALBERTA PIONEERS & DESCENDANTS CABIN

CITY OF EDMONTON
HISTORIC RESOURCE
MANAGEMENT PROGRAM



9430 - SCONA ROAD NW

DESCRIPTION OF HISTORICAL PLACE

The Old Timers Cabin is a 1950's style log cabin that was constructed from 1958 - 1959 by builder Hobart Dowler for the Northern Alberta Pioneers and Descendants Association. In 2024, the Northern Alberta Pioneers and Descendants Association changed the name to the Bison Lodge.

HERITAGE VALUE

This Cabin is significant for its association with an important community group in Edmonton, the builder Hobart Dowler, and its architectural style.

The Northern Alberta Pioneers and Descendants Association began in 1894 as a men's social club, and since expanded its membership and mandate. The group is focused on preserving the history of its members and Alberta, and opens membership to pioneers and their descendants who settled the West before 1905. Pioneers significant to the early growth of Edmonton were part of the organization, and have streets and neighbourhoods in Edmonton named in their honour. Now the group has broadened its scope to "truly include Northern Alberta" with investigating truth and reconciliation as a priority. This resulted in the name change from Pioneers Cabin to the Bison Lodge.

The Association operated out of various locations within the City, including executive member's offices, a cabin on the Exhibition grounds and the MacDonald Hotel. As the Association grew, they began looking for a permanent meeting and social gathering space.

In 1956, the Northern Alberta Pioneers and Descendants Association was offered a long term lease, under the direction of Mayor Hawrelak, at their current Scona Road site from the City of Edmonton. At the time of negotiation, Dr. Andrew J. Malmas served as President of the Association. The Old Timers Cabin has been the headquarters and meeting place of its members since construction was completed in 1959.

The structure is a 1950's style log cabin. The designer and builder, Hobart Dowler, built between 80 - 100 log cabins in Alberta during his career (1935-1960), including notable structures in the Jasper and Yoho National Parks, the Alpine Club of Canada cabins at Glacier, and the Central and Southern Alberta Pioneers lodges.

The logs for the Old Timers Cabin were locally sourced from a tree stand near the Pembina River and Drayton Valley. The planed poplar flooring was sourced from the municipality of Leduc. Dowler's craft involved saddle notching the logs, with well fit grooves so the walls would be weather proof. Few log cabins were built within the City of Edmonton during the 1950's. The Old Timers Cabin is a representation of Dowler's work uniquely within an urban setting.

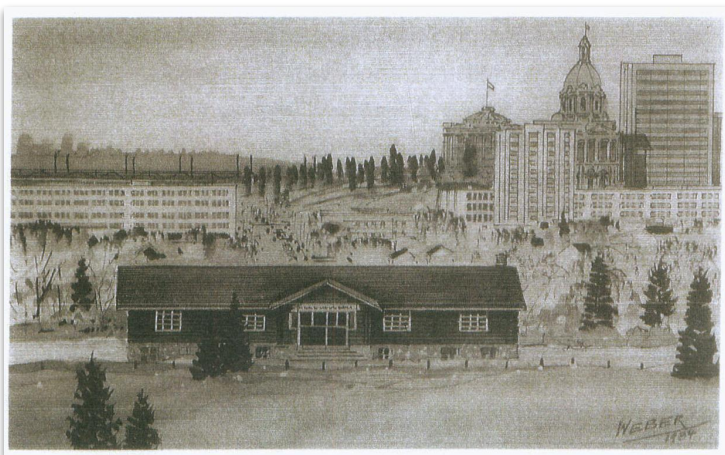




CHARACTER DEFINING ELEMENTS

The character defining elements as expressed in the form, scale and massing of the log cabin include:

- + Saddle notched spruce log exterior
- + Stone foundation
- + Stone fireplace and chimney
- + Cedar shingle roof
- + Saddle notched spruce log interior, and interior poplar planed flooring
- + Spruce wooden window frames and casings, with original profile
- + Front gable profile over the entrance (original 1959)
- + Front gable profile over the eastern most front window (addition from 1987)
- + Side facing gable roof
- + Exposed log beams under the eaves



Visit edmonton.ca/historicresources to learn more

