



JOHN T. ROSS RESIDENCE

9749 - 111 STREET NW

CITY OF EDMONTON HISTORIC RESOURCE MANAGEMENT PROGRAM

Edmonton

DESCRIPTION OF HISTORICAL PLACE

The John T. Ross Residence was built in circa 1909 as a one and one-half storey brick residence. It has a hipped roof with wide intersecting front gable and a small central front porch. It is located on a corner lot in what is now known as the Wihkwentôwin neighbourhood. The John T. Ross Residence is significant for its design and is a representative example of a pre-WWI residential development in Edmonton.

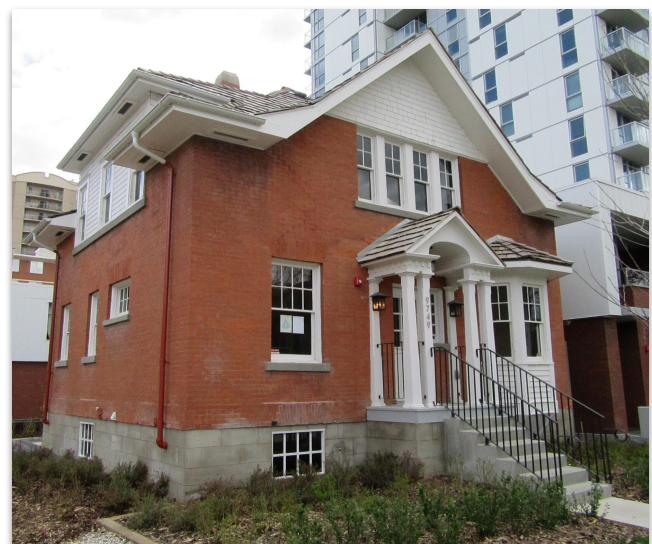
HERITAGE VALUE

Built circa 1909, the John T. Ross Residence is significant for its combination of design elements which make it unique among the early residence in Wihkwentôwin. Although smaller than many of its neighbours, the Ross Residence was still designed to reflect the wealth of the neighbourhood. The home used wood frame construction with brick veneer to maintain an appearance similar to the large mansions in the area. The wood framed construction was a fiscal alternative to full brick construction, while the brick, considered a high class material, was a public declaration of wealth. The home was also designed with a variation on the popular hipped roof. A band of four narrow windows in the wide front gable and shed roof dormers on the side elevations provide a practical solution to bring more natural light into the upper level of the home. . The result is an uncommon roofline that is unique in the community. In the 1930s, a small front porch replaced the original wrap-around verandah, an evolution which reflects the changing residential design ethos in Edmonton at the time.

. The combination of the design elements found in the John T. Ross Residence make it unique in Wihkwentôwin and add to the historic character of the neighbourhood.

The John T. Ross Residence is also a representative example of pre-WWI residential interiors in Edmonton. Many of the homes interior details were common in residential construction in the city in the early 1900s. Locally produced and readily available, the interior detailing includes wooden trim, wainscoting and a timber staircase. The continued presence of historic interiors such as that of the John T. Ross Residence are important in maintaining Edmonton's connection to its pre-WWI residential development and its character as a city.

Today the John T. Ross Residence, now a professional office is incorporated with the neighbouring high rise complex, showcasing how heritage buildings can successfully be integrated with new developments.





CHARACTER DEFINING ELEMENTS

The heritage value of the John T. Ross Residence is expressed in such character defining elements as:

- + pyramidal hipped roof with bell cast eaves;
- + central front door framed by a portico with a broken pediment, dentilation, and chamfered posts;
- + wooden paneled front door with 12 panes of glass, an eight pane sidelight and voussoir lintel;
- + brick exterior;
- + block pattern in parging at the basement level with brick banding above;
- + broad timber fascia boards at eave level with tongue and groove timber soffits;
- + shallow hipped wall dormers on side elevations with timber shingles, timber sash windows, and moulded lintels;
- + brick chimney;
- + all original wooden windows; and
- + interior timber mouldings and trims around the windows and doors, wainscoting features, and timber staircase.

Designated as a Municipal Historic Resource through Bylaw 14637 in November 2007.

Visit edmonton.ca/historicresources to learn more

