

# THE JOHN WALTER'S CO. LTD.

Edmonton and Strathcona Mills Operated  
by one of Largest Concerns in the West



**M**ORE than any other commodity is the need of lumber felt, in a new and growing country and where the supply of material is short, the development of that country is hindered. If the supply has to come from distant markets, that is also a great

Company, and though a primitive condition existed, the opportunities were foreseen by this pioneer.

Carriage making and smithing was his trade and in this industry he made his start, while at the present time heavy building of boats and

in the succeeding years. The need of greater facilities and a plant that would give quicker convenience to Edmonton was apparent so that four years ago the erection of a mill on this side of the river was begun and the extensive plant at the foot of First Street has been operated since.

This mill, equipped with the best machinery for lumber manufacturing and having the newest and best improvements in this industry, has a capacity of 75,000 feet a day, and with the Strathcona mill, the company can cut between 135 and 140,000 feet of lumber daily, giving it the greatest output of similar industry in this section.

The company owns its own timber districts, about 125 miles west of this city, and through scores of contractors has a force of men in the woods in the winter that taken with the people that it employs in the two mills here, makes it one of the largest employers of labor in the twin cities. Thus a country providing its own raw material acts beneficially in many ways: providing the commodity promptly, being able to sell at a lower price than as if transportation charges were added and giving employment to many people whose wages are distributed in the market where it is earned.

The timber cut and manufactured is largely spruce, which is a hardy durable cut, as selected from the timber limits here. Tamarac is also lumbered to some extent and jack pine. At the Edmonton mill, the logs are turned into lumber of all lengths and thickness, and sheathing, lath and railroad ties, are manufactured. The concern probably provides more builders' and contractors' materials than any other west of Winnipeg.

At Strathcona scows and boats, in connection with the mill and carriage and sleigh work, are built, and the largest number of boats that go up the river are constructed here, anything that may be navigated upon these waters being designed and built by this concern.

Doors, blinds and sash are dealt in and the solid materials and exterior finish of a house or business block can be secured from this company without loss of time and at a price that will com-



The steamer City of Edmonton, owned by the John Walter's Co., Ltd.

handicap, since much time is consumed in the shipment of goods and the cost is relatively high for the mileage that takes place.

Central Alberta has been relieved of these disadvantages and the natural resources of the country combined with the energetic and sagacious men who have worked them, has resulted in the quick upgrowth that has made this district the astonishment of this continent.

Of the concerns that have done much to bring about this desirable condition may be mentioned, John Walter's Company, Limited, a concern that has not only catered to this demand, since building processes assumed any volume, but has kept pace with the remarkable development through expanding facilities and increasing operations.

As has been said this part of the province provides almost every necessity that is required for either ordinary or luxurious living, and that it is endowed with fine timber lands gives it advantages over most of the towns that have had a good start in other provinces but have been held back by their restricted sources of supply.

The Walter's Company, first organized in Strathcona some eighteen years ago, virtually preceeded the demand, for neither of the twin cities at that early day, showed indications of becoming the largely populated and metropolitan cities that they are now. A few of our early settlers understanding the desirable condition of this section and realizing the trade stronghold they might be were prepared for the great changes that have followed, but in general the pioneers were content to pursue the one industry that brought them here without giving thought to the wonderful wide possibilities this region offered.

But among these early settlers was John Walter, who came here with the Hudson's Bay

vehicles remains one of the operations of his plant at Strathcona and this company was the builder of our handsome steamer, the City of Edmonton.



Taking out Logs in Winter on Timber Berths, on the Saskatchewan River, owned by John Walter's Co., Ltd.

The lumber traffic and the many needs which it would supply was an uppermost consideration and the mill across the river in what is now known as Walterdale was organized eighteen years ago, and has been successfully operated

pare favorably with any offered in any part of the Dominion.

Fifteen teams are used and deliveries are made on either side of the bridge. The company has endeavored at different times to secure a

spur track on its grounds at the foot of First Street, and this direct connection with the Canadian Northern would give it a facility in handling its product that would be beneficial to customers as well as to the company, and is a utility that it is hoped may be granted this concern.

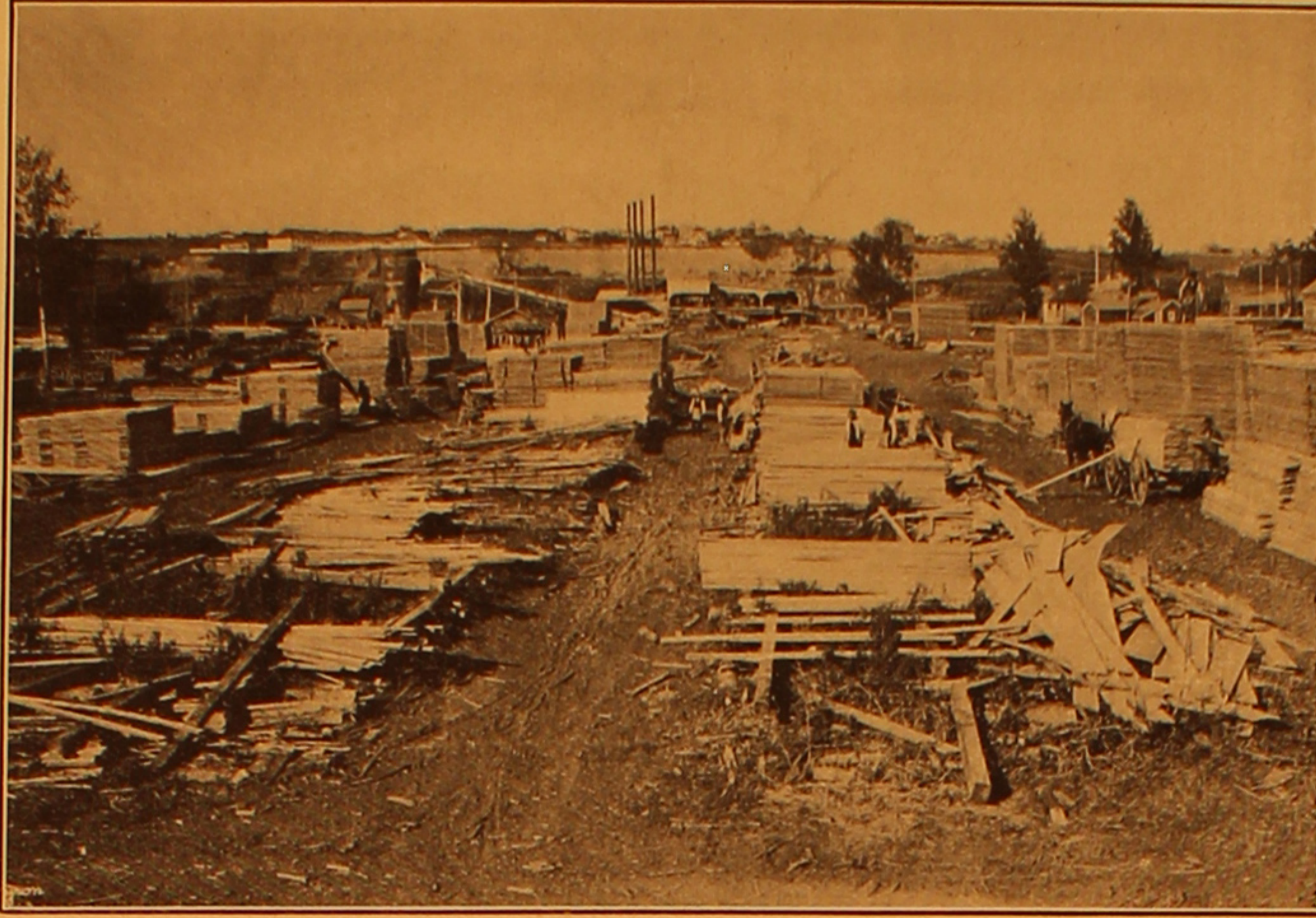
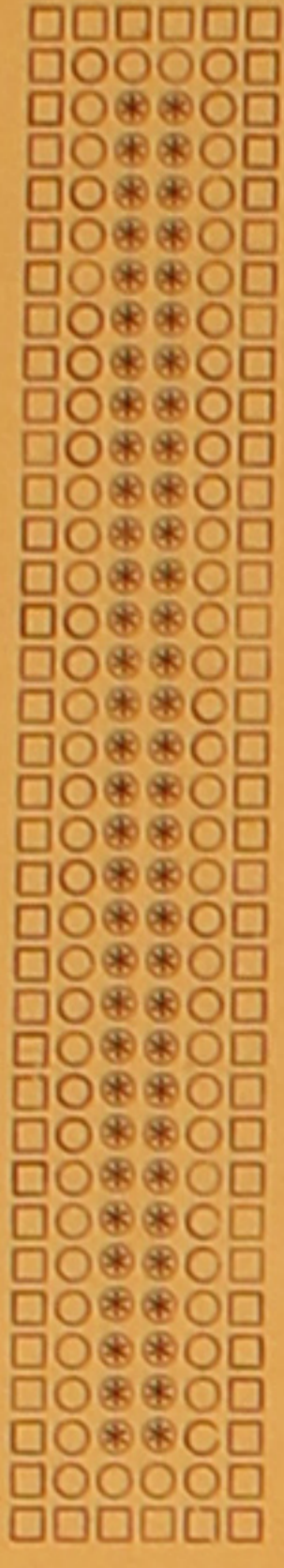
As there are seventy men employed at the Edmonton mill, it is an industry that should be given encouragement and co-operation com-

mensurate with the important position that it occupies in this community.

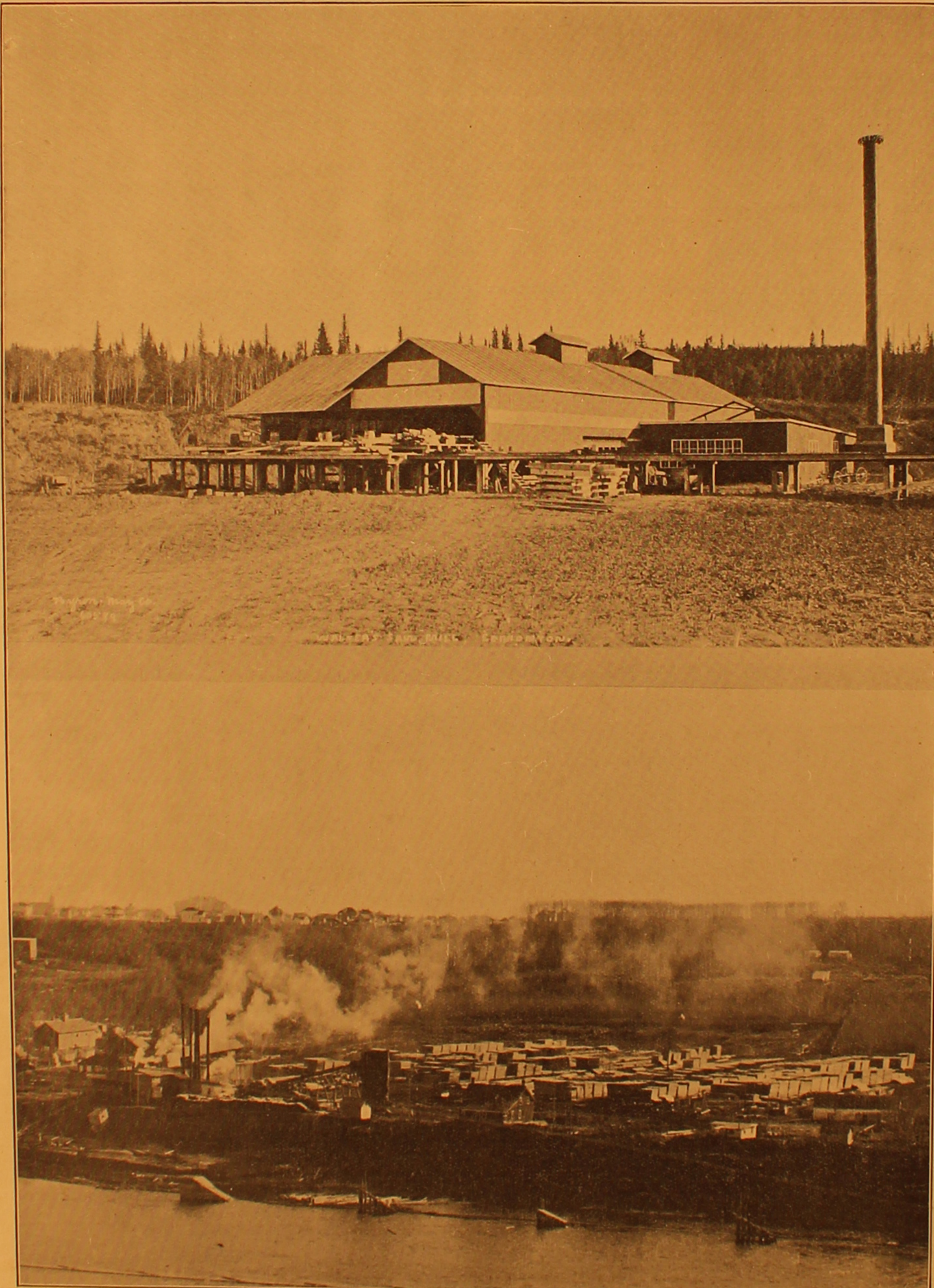
Mr. Walters has been here forty years and remained with the Hudson's Bay Company a long period. In beginning business for himself he took a homestead in Strathcona and from the time of his residence here and his subsequent industrial operations he has been one of this city's most loyal and progressive citizens.

He has been an advocate for education and civic improvements, and his arguments for growth and betterment have been upheld by the material support that he has given.

The Walter's Company stands among the leading industries of Alberta, and the founder and head of the business, John Walters, has that regard and esteem of the community that is earned and retained by industry, initiative and a lively public spirit.



Walter's Mill on Strathcona Side of River



The Mills and Yards of the John Walter's Co., Ltd.