

PERFORMANCE SUMMARY

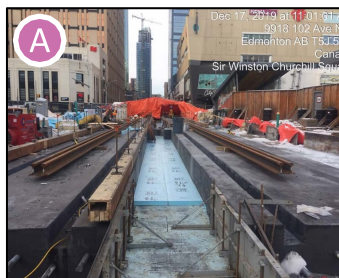
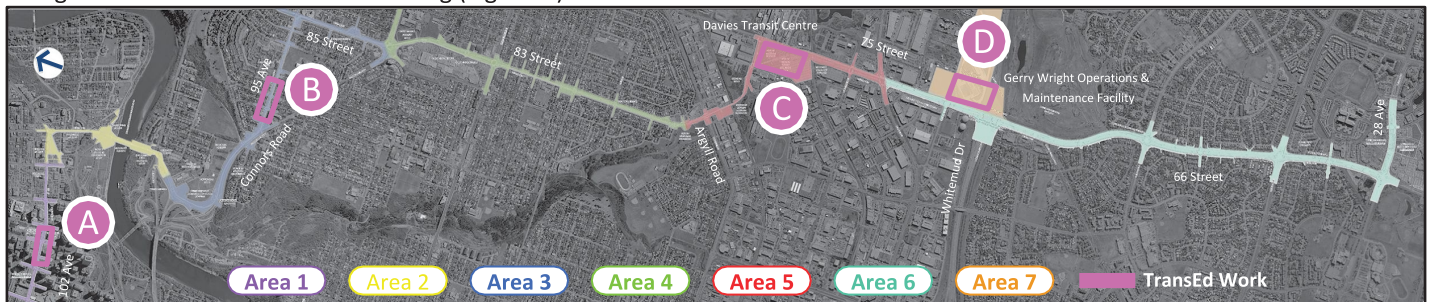
During the fourth quarter of 2019, performance on the Valley Line LRT - Southeast project was assessed for cost, schedule, scope, and public communications.

This dashboard provides an overview of progress and performance of the Valley Line Project and a summary of work completed by TransEd Partners and the City.

CUMULATIVE PERFORMANCE	NOTES
COST PERFORMANCE <i>Measures the cost efficiency of the project.</i>	<ul style="list-style-type: none"> Cost performance is good. Project remains on budget.
SCHEDULE PERFORMANCE <i>Measures the schedule efficiency</i>	<ul style="list-style-type: none"> Cumulative Schedule performance is 69%, as measured in comparison to TransEd's baseline. Increased risk to achieving key milestones in the Project Agreement.
SCOPE PERFORMANCE <i>Measures the current status of the changes compared to the baseline scope</i>	<ul style="list-style-type: none"> No significant changes to either TransEd scope of work or City contracted scope of work.
PUBLIC COMMUNICATIONS <i>Top three public inquiries over the period</i>	<ul style="list-style-type: none"> The top three public inquiries for the period are vehicle traffic conditions, pedestrian crossing and surface issues, and project schedule.

A summary of construction progress along the alignment. Several examples are shown in the pictures below.

TransEd Work in Q4: Construction on the Churchill Connector and Quarters Tunnel continues. Rail installation downtown (Figure A) is ongoing. On 102 Ave, both portal waterproofing and stormwater management tank construction continues. Tawatinâ Bridge Pier 1 has completed all tower lift pours and is at final height. Bridge spans under construction with 10 of 41 complete. All South River Valley elevated guideway spans have been lifted into place. Construction continues on the wildlife underpass at Connors Road. 95 Ave has been reopened to traffic and rail installation is ongoing (Figure B). All elevated guideways at Davies Station have been erected (Figure C). Davies Station construction and utility complex installation continues; timber roof installation has begun. Whitemud pedestrian bridge and LRT bridge work is ongoing. The 75 Street traffic bridge rehab work continues. The overhead wires installation is continuing on 66 St. The operations and maintenance building interior finishing, exterior cladding, and electrical and mechanical installations are ongoing. Nine Light Rail Vehicle cars have been received in Edmonton and are now being stored in the maintenance building (Figure D).



Rail Installation at 99 St to 100 St (TransEd)



95 Ave Rail Installation (TransEd)



Davies Elevated Guideway Span Erection at Station Interface (TransEd)



Train Doors Open to Show LRV in Maintenance Building (TransEd)

KEY ACTIVITY 3-MONTH LOOK-AHEAD

The highlights correspond to the coloured areas of the alignment on map above.

- Area 1:** Continue Churchill Connector, Stop, track slab and stormtank construction. Complete Chinese structure walls.
- Area 2:** Continue tunnel lining and waterproofing. Continue Tawatinâ bridge deck and pier pours. Begin stay cable installation. Continue construction on north river bank.
- Area 3:** Continue work on Kâhasinîskâk Bridge, retaining walls, roadways, drainage, track slab, and Strathearn and Holyrood Stops. Complete wildlife corridor.
- Area 4:** Progress road and track work on 83 St. Continue construction at Avonmore and Bonnie Doon Stops.
- Area 5:** Continue Davies Station mezzanine, stair steel erection, timber roof work, and masonry work. Complete electrical installation at Davies utility complexes.
- Area 6:** Continue installation of overhead wires and begin energization of the line. Complete Whitemud pedestrian bridge walkway. Continue work on concrete platforms at Stops.
- Area 7:** Complete operations and maintenance facility building interior finishing and exterior cladding.
- Project-wide:** Ongoing utilities, traffic detours, and traction power substation installation.
- Light Rail Vehicles (LRV):** Commence LRV dynamic testing under power. Receive 10th LRV in Edmonton.