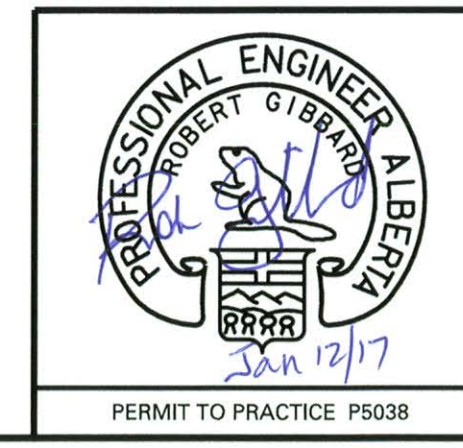


DESIGN SPEED = 80 km/h
POSTED SPEED = 70 km/h

LEGEND

- CURB & GUTTER
- SIDEWALK
- LANE LINE
- SHOULDER / STOP LINE
- - - PROPERTY LINE
- ACCESS
- TRAFFIC SIGNAL

* NOTE: ALL THE ABOVE ARE PROPOSED ITEMS *



Jan 20/2017
Manager, Infrastructure Planning & Design

Jan 12/17
Director, Transportation Planning & Design

0 25 50m

CONCEPT - SUBJECT TO PRELIMINARY SURVEY AND DESIGN

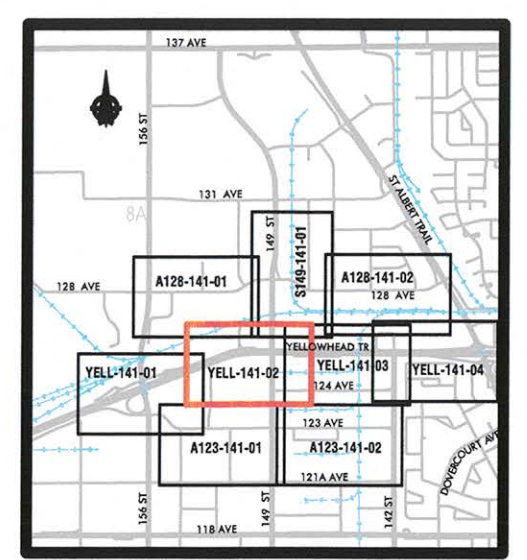
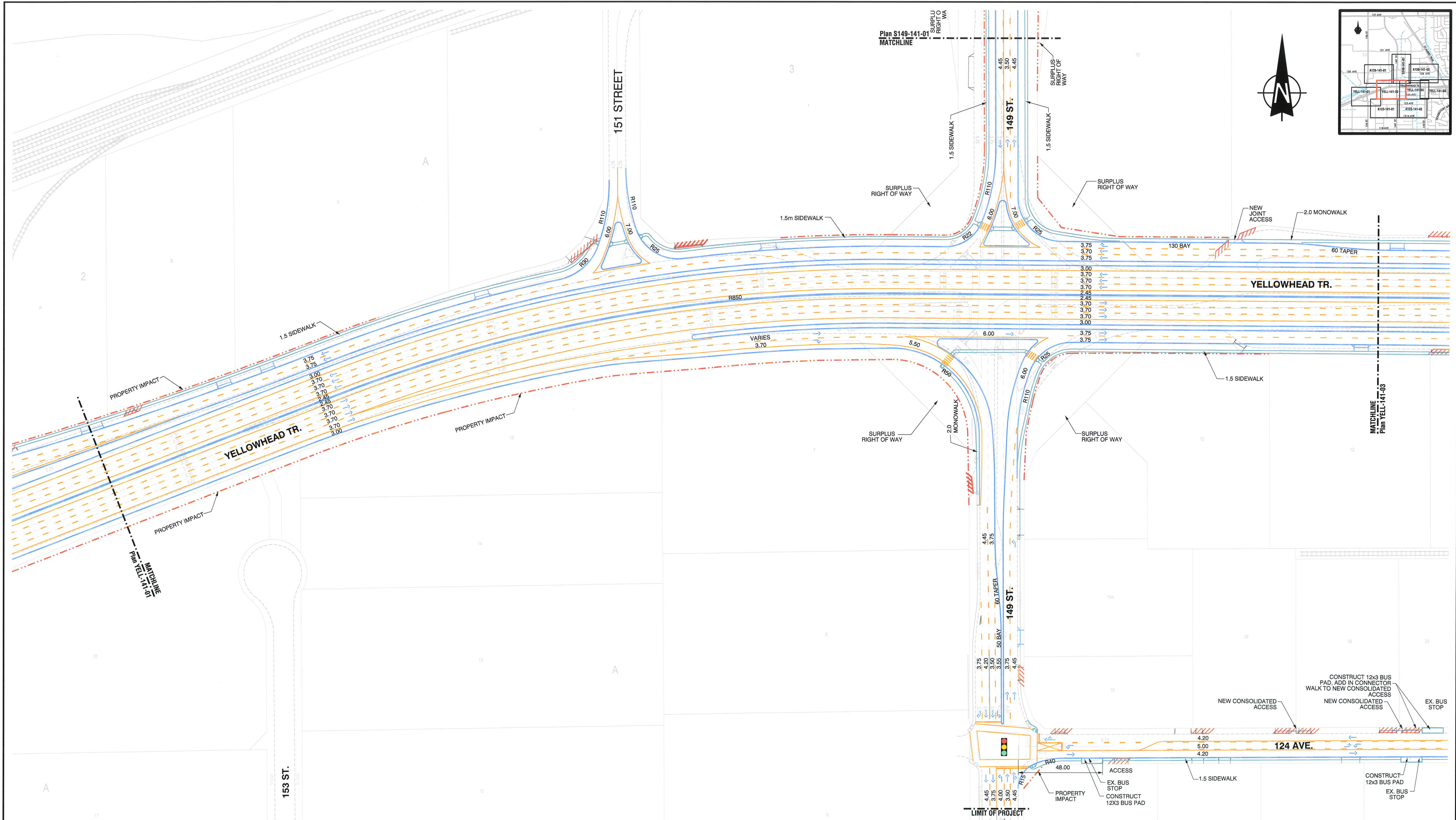
YELLOWHEAD TRAIL
149 STREET FREEWAY PLAN
NETWORK IMPROVEMENTS

Edmonton INTEGRATED INFRASTRUCTURE SERVICES

DRAWN: KdW/kWB
REVIEW: NL
DATE: SEPT 2016

PLAN NO.
YELL-141-01

YELL-141-01.dgn Default 1/11/2017 3:02:44 PM by FCP



DESIGN SPEED = 80 km/h
 POSTED SPEED = 70 km/h

LEGEND

- CURB & GUTTER
- SIDEWALK
- LANE LINE
- SHOULDER / STOP LINE
- PROPERTY LINE
- ACCESS
- TRAFFIC SIGNAL

* NOTE: ALL THE ABOVE ARE PROPOSED ITEMS *

PROFESSIONAL ENGINEER A.B.E.R.A.
 ROBERT GIBBERD
 Jan 20/2017

PERMIT TO PRACTICE P5038

Manager, Infrastructure Planning & Design
 Director, Transportation Planning & Design

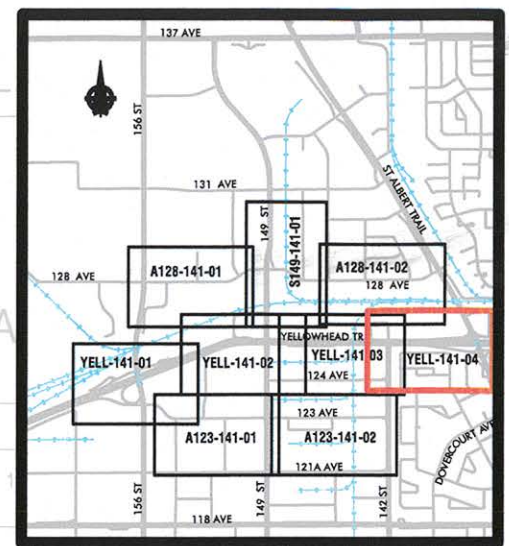
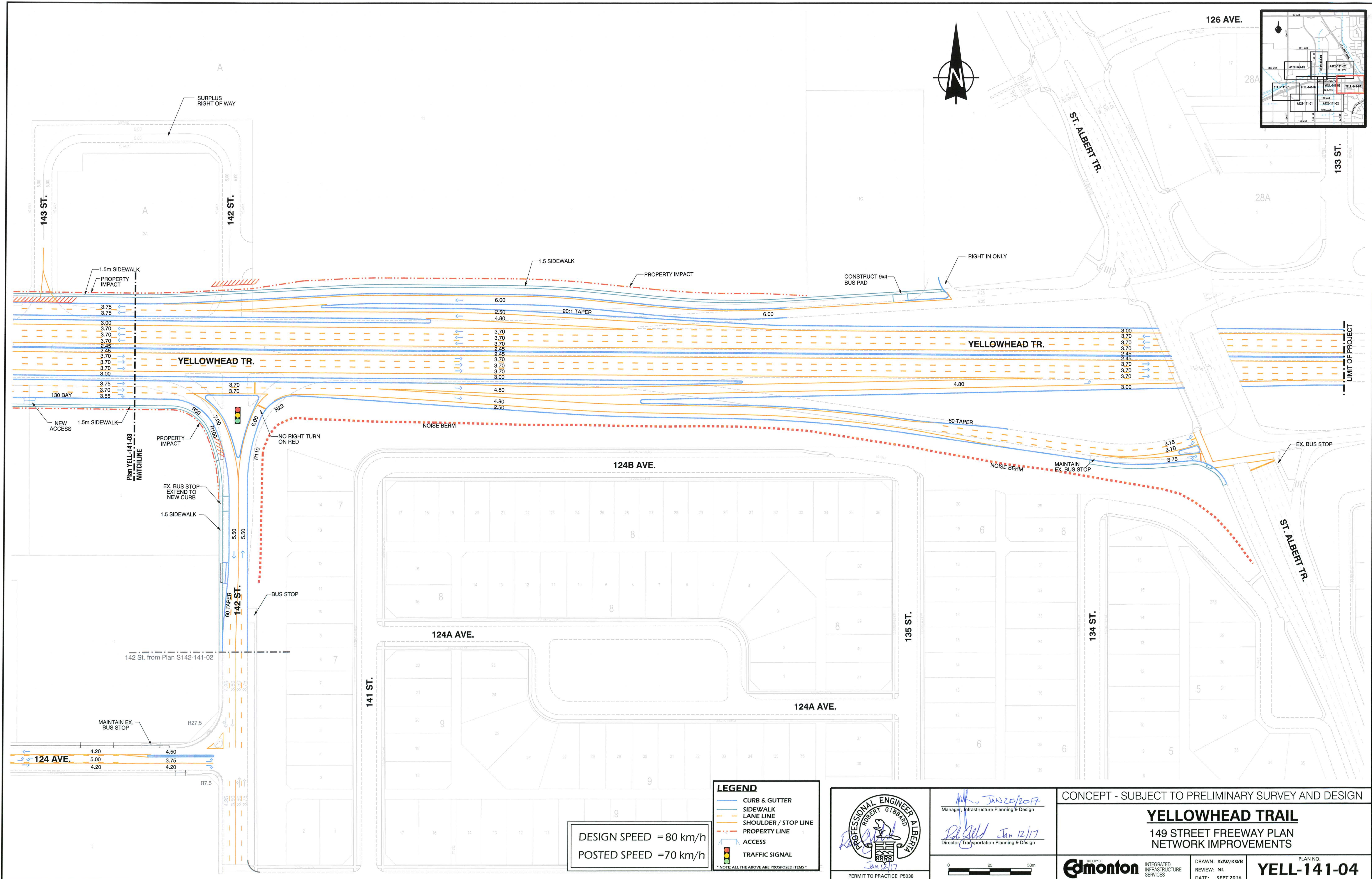
CONCEPT - SUBJECT TO PRELIMINARY SURVEY AND DESIGN

YELLOWHEAD TRAIL
 149 STREET FREEWAY PLAN
 NETWORK IMPROVEMENTS

Edmonton INTEGRATED INFRASTRUCTURE SERVICES
 DRAWN: KdW/KWB
 REVIEW: NL
 DATE: SEPT 2016

PLAN NO.
YELL-141-02

YELL-141-02.dgn Default 1/11/2017 3:04:16 PM by FCP

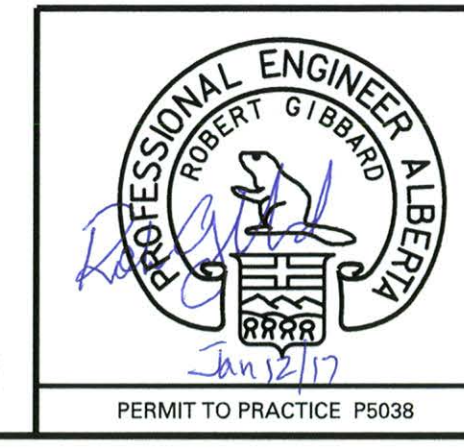


LEGEND

- CURB & GUTTER
- SIDEWALK
- LANE LINE
- SHOULDER / STOP LINE
- - - PROPERTY LINE
- - - ACCESS
- TRAFFIC SIGNAL

* NOTE: ALL THE ABOVE ARE PROPOSED ITEMS *

DESIGN SPEED = 80 km/h
 POSTED SPEED = 70 km/h



Jan 20/2017
 Manager, Infrastructure Planning & Design

Jan 12/17
 Director, Transportation Planning & Design

CONCEPT - SUBJECT TO PRELIMINARY SURVEY AND DESIGN

YELLOWHEAD TRAIL
 149 STREET FREEWAY PLAN
 NETWORK IMPROVEMENTS

Edmonton INTEGRATED INFRASTRUCTURE SERVICES

DRAWN: KdW/KWB
 REVIEW: NL
 DATE: SEPT 2016

PLAN NO.
YELL-141-04

YELL-141-04.dgn Default 1/11/2017 3:07:02 PM by FCP