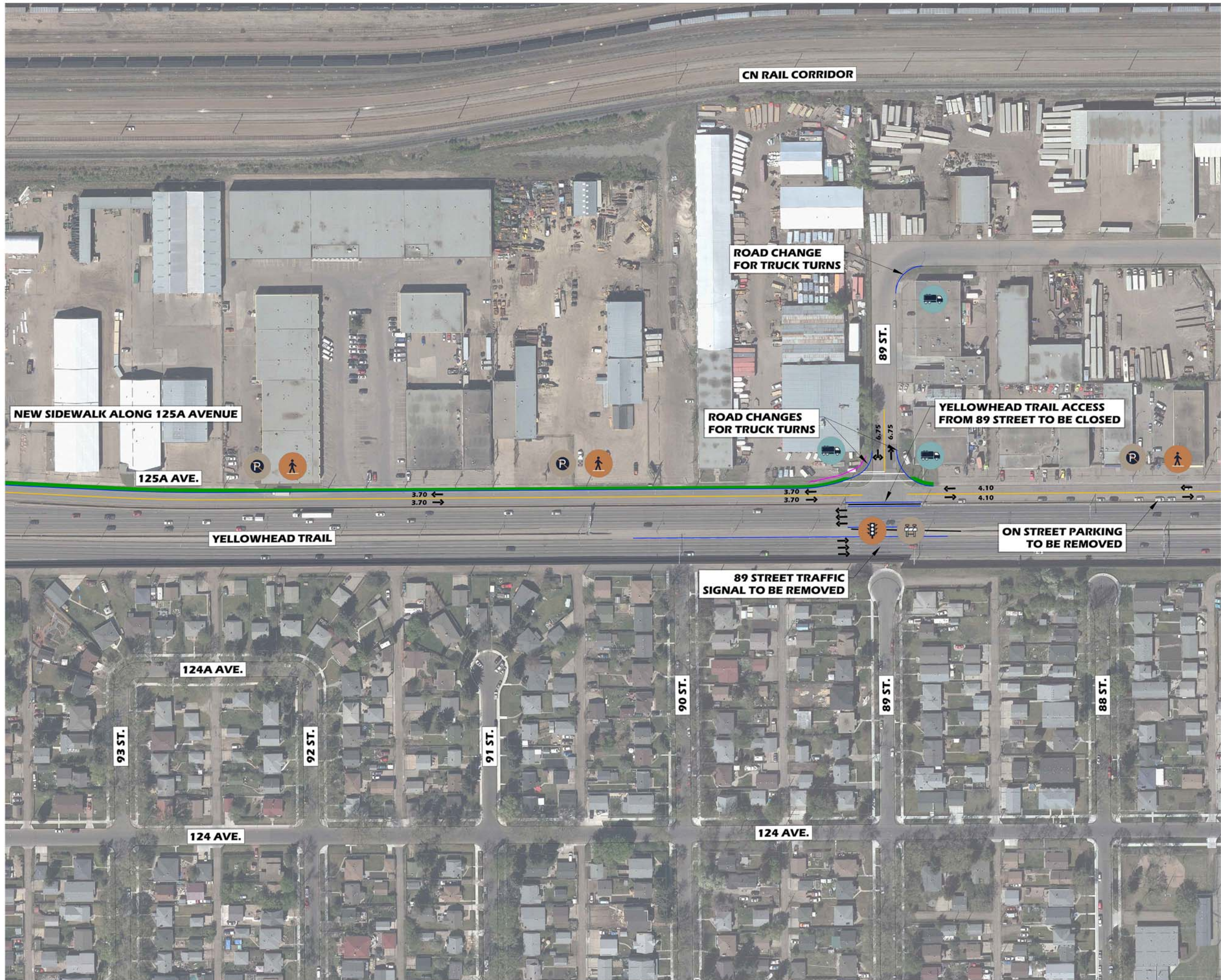




TRUCK APRON EXAMPLE (IMAGE FROM WSDOT)



CN RAIL CORRIDOR

ROAD CHANGE FOR TRUCK TURNS

NEW SIDEWALK ALONG 125A AVENUE

ROAD CHANGES FOR TRUCK TURNS

YELLOWHEAD TRAIL ACCESS FROM 89 STREET TO BE CLOSED

125A AVE.

89 ST.

YELLOWHEAD TRAIL

ON STREET PARKING TO BE REMOVED

89 STREET TRAFFIC SIGNAL TO BE REMOVED

124A AVE.

124 AVE.

93 ST.

92 ST.

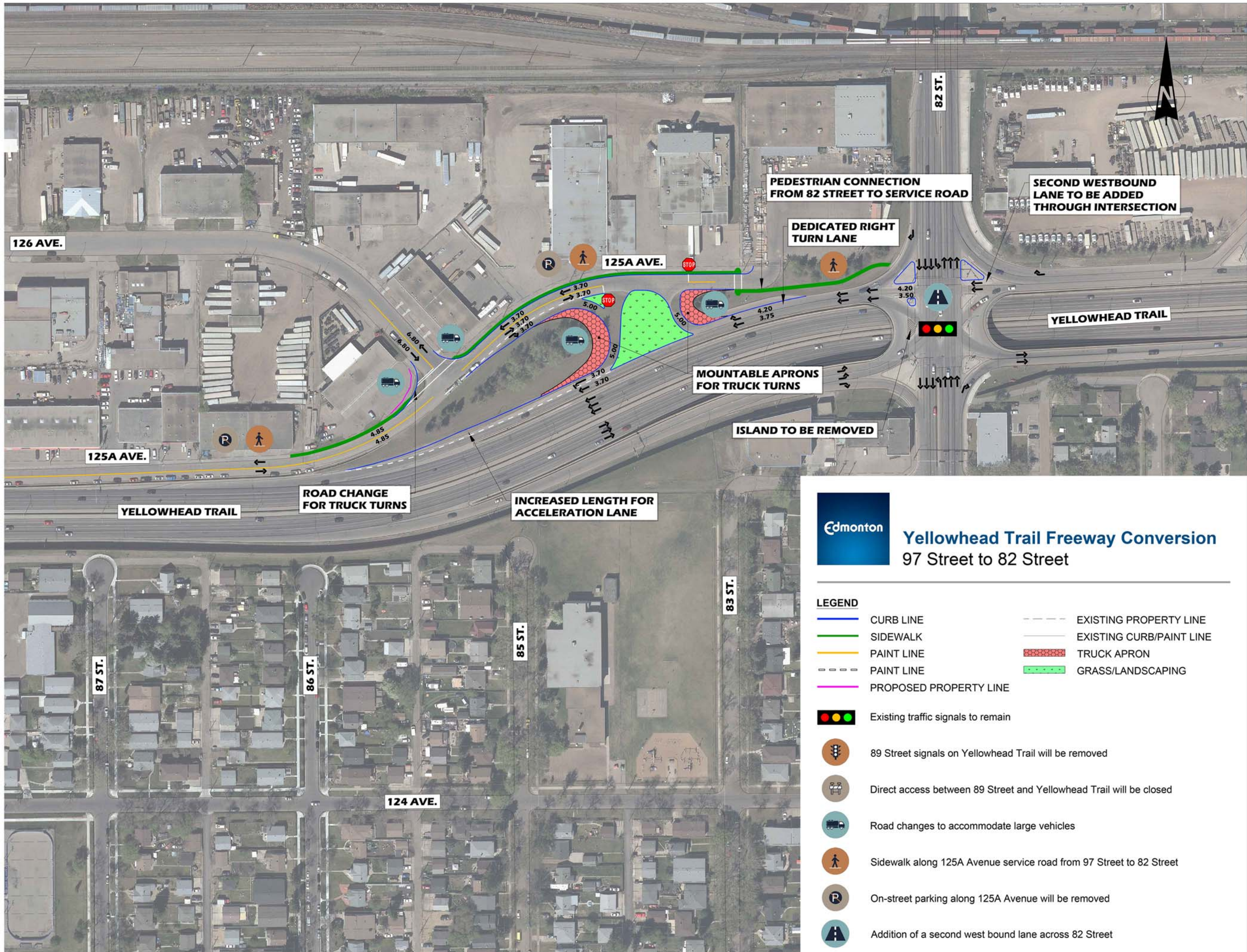
91 ST.

90 ST.

89 ST.

88 ST.

124 AVE.



Yellowhead Trail Freeway Conversion 97 Street to 82 Street

LEGEND

- CURB LINE
- SIDEWALK
- PAINT LINE
- - - PAINT LINE
- PROPOSED PROPERTY LINE
- - - EXISTING PROPERTY LINE
- EXISTING CURB/PAINT LINE
- TRUCK APRON
- GRASS/LANDSCAPING

- Existing traffic signals to remain
- 89 Street signals on Yellowhead Trail will be removed
- Direct access between 89 Street and Yellowhead Trail will be closed
- Road changes to accommodate large vehicles
- Sidewalk along 125A Avenue service road from 97 Street to 82 Street
- On-street parking along 125A Avenue will be removed
- Addition of a second west bound lane across 82 Street