



# West LRT Workshop Session

[www.edmonton.ca/LRTProjects](http://www.edmonton.ca/LRTProjects)

## Welcome

### Stony Plain Road from 149 Street to 124 Street

May 12, 2010

**CH2MHILL**

THE CITY OF  
**Edmonton**



# Tonight's Meeting Purpose

[www.edmonton.ca/LRTProjects](http://www.edmonton.ca/LRTProjects)

- To provide more detailed information on West LRT concept engineering
- To provide specific detail on alignment alternatives for Stony Plain Road /149 Street to Stony Plain Road / 124 Street segment
- To collect comments from participants



# LRT Workshop Session Schedule

[www.edmonton.ca/LRTProjects](http://www.edmonton.ca/LRTProjects)

West LRT	
May 4, 2010	Lewis Estates to Meadowlark
May 6, 2010	Meadowlark to SPR/142 St.
May 12, 2010	SPR/149 St. to SPR/124 St.
May 13, 2010	Groat Road to Downtown

Southeast LRT	
May 18, 2010	Downtown to 95 Ave/83 St
May 19, 2010	Strathearn to Whyte Ave
May 26, 2010	Bonnie Doon to Wagner
May 27, 2010	Wagner to Mill Woods

[www.edmonton.ca/LRTProjects](http://www.edmonton.ca/LRTProjects)



# Proposed Agenda

[www.edmonton.ca/LRTProjects](http://www.edmonton.ca/LRTProjects)

- Welcome and Introductions
- Project Background
- Session #1: Right-of-way Alignment
- Session #2: Station Location and Configuration
- Session #3: Neighbourhood and Business Access
- Conclusion



# West LRT

## Stony Plain Road from 149 Str. to 124 Str.

[www.edmonton.ca/LRTProjects](http://www.edmonton.ca/LRTProjects)

# Project Background



# Where we are in the process?

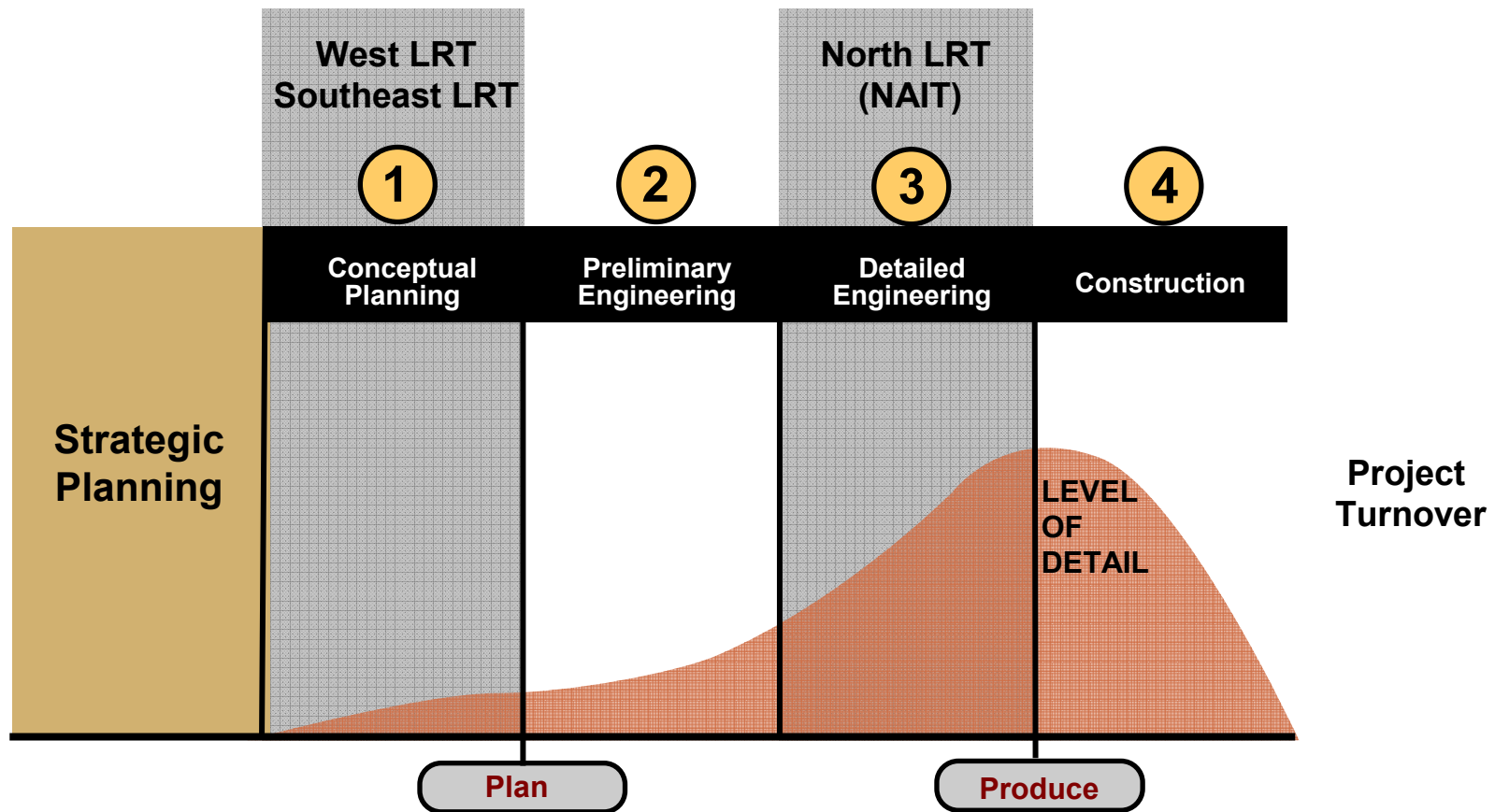
[www.edmonton.ca/LRTProjects](http://www.edmonton.ca/LRTProjects)

## Council approvals to date:

- LRT Network Plan (*June 2009*)
- Southeast LRT Corridor (*December 2009*)
- West LRT Corridor (*December 2009*)

# Where we are in the process?

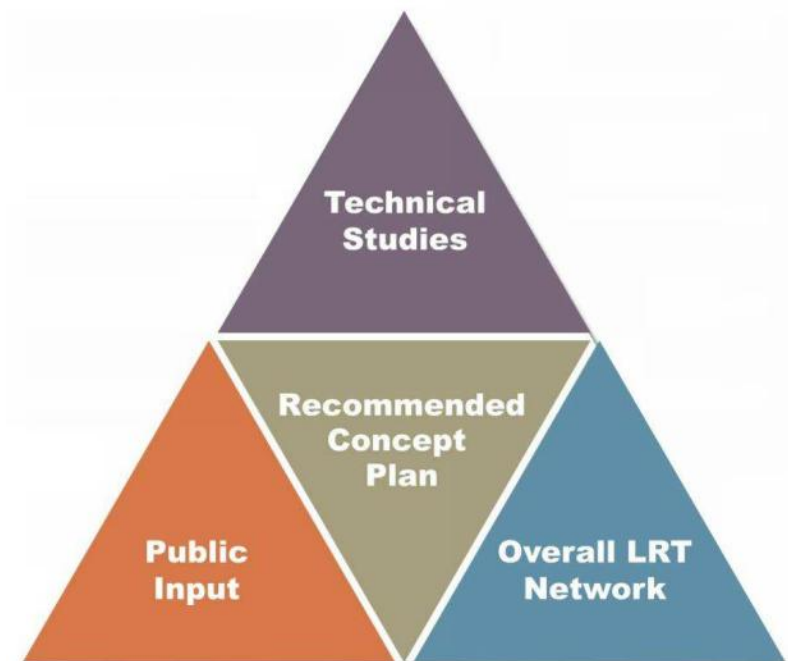
[www.edmonton.ca/LRTProjects](http://www.edmonton.ca/LRTProjects)



# Where we are in the process today?

[www.edmonton.ca/LRTProjects](http://www.edmonton.ca/LRTProjects)

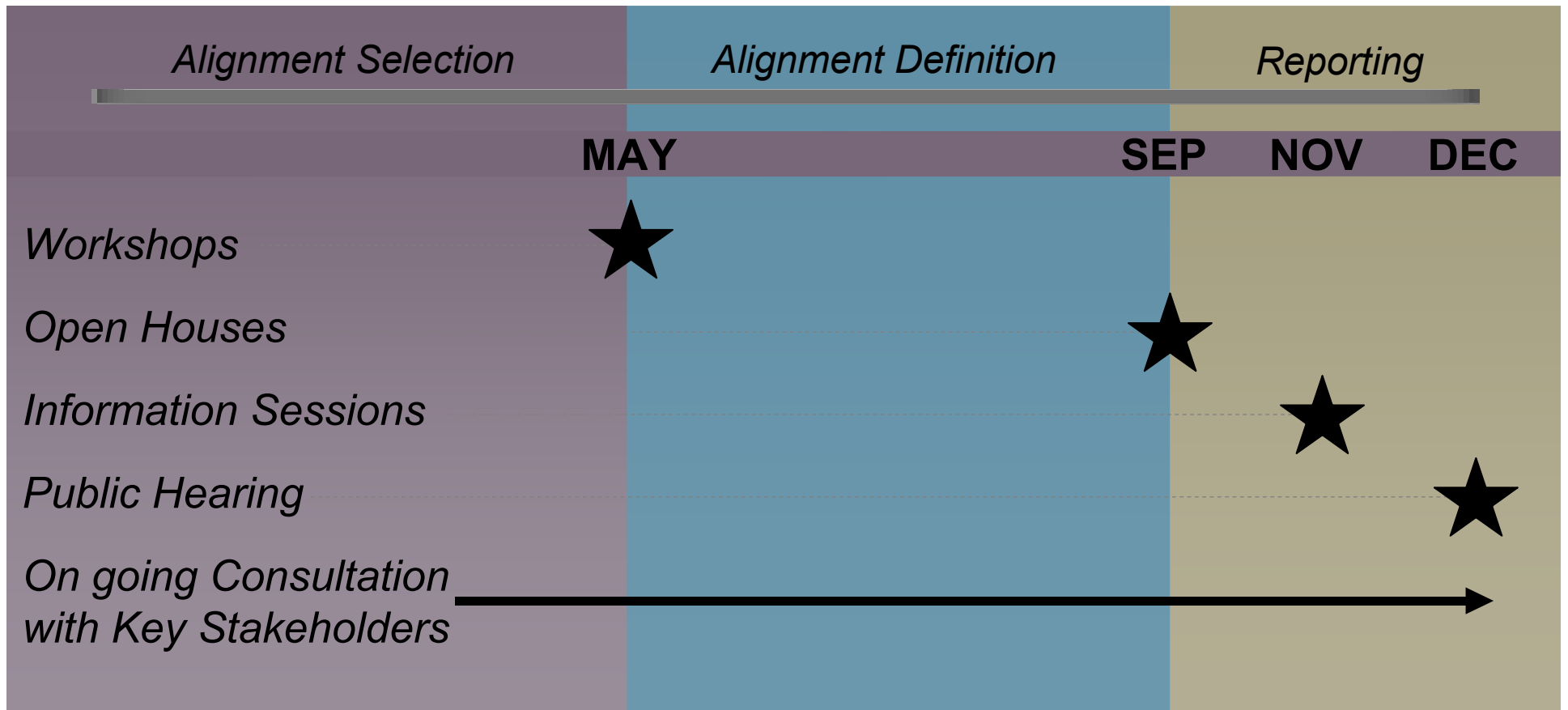
- Presenting information (givens):
  - Grade Separations
  - Noise Study
  - Roadway Network
  - Safety
- Collecting participant comment/input (testing ideas):
  - Right-of-Way Alignment
  - Station Location
  - Neighbourhood and Business Access





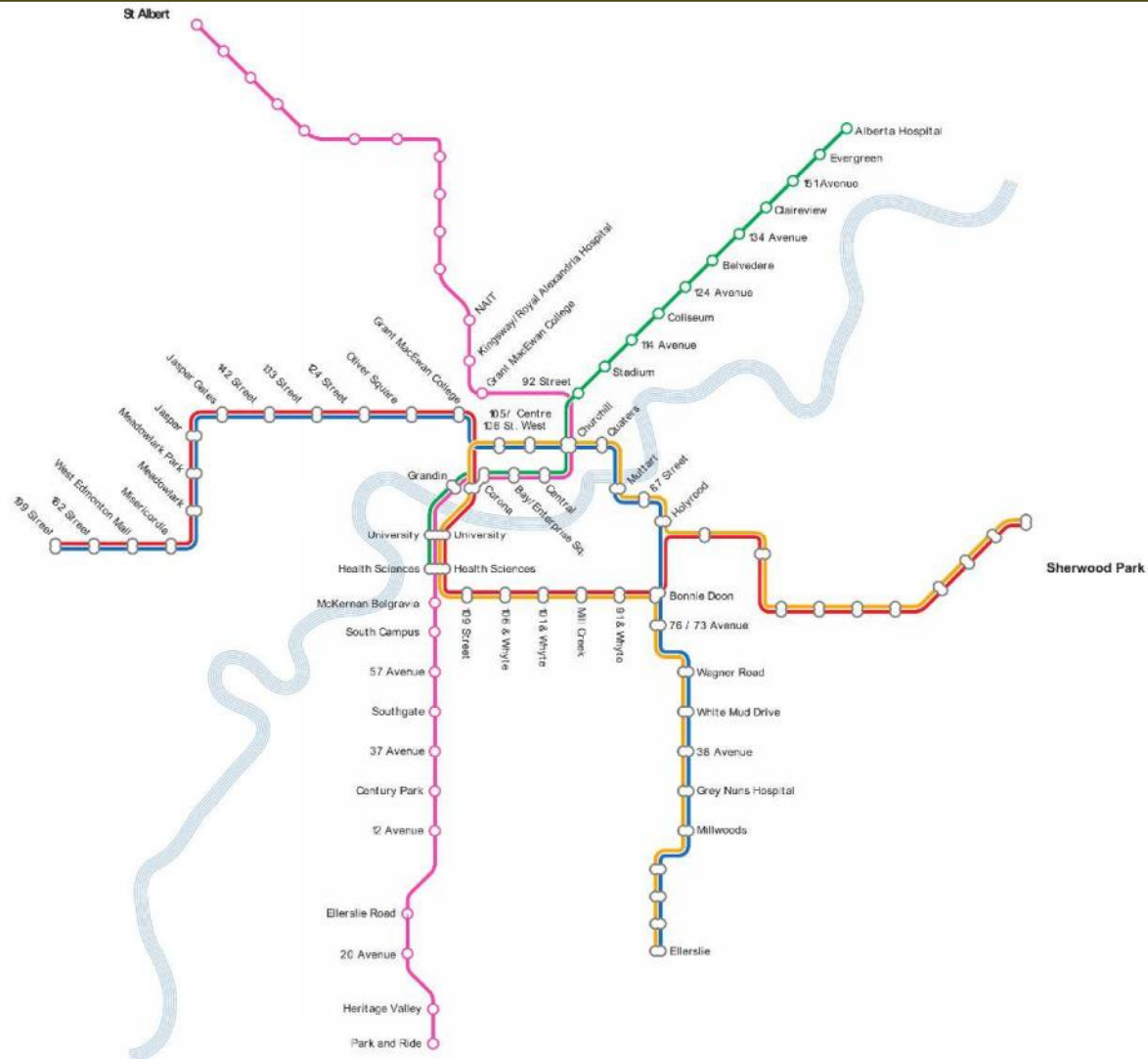
# Where are we going?

[www.edmonton.ca/LRTProjects](http://www.edmonton.ca/LRTProjects)



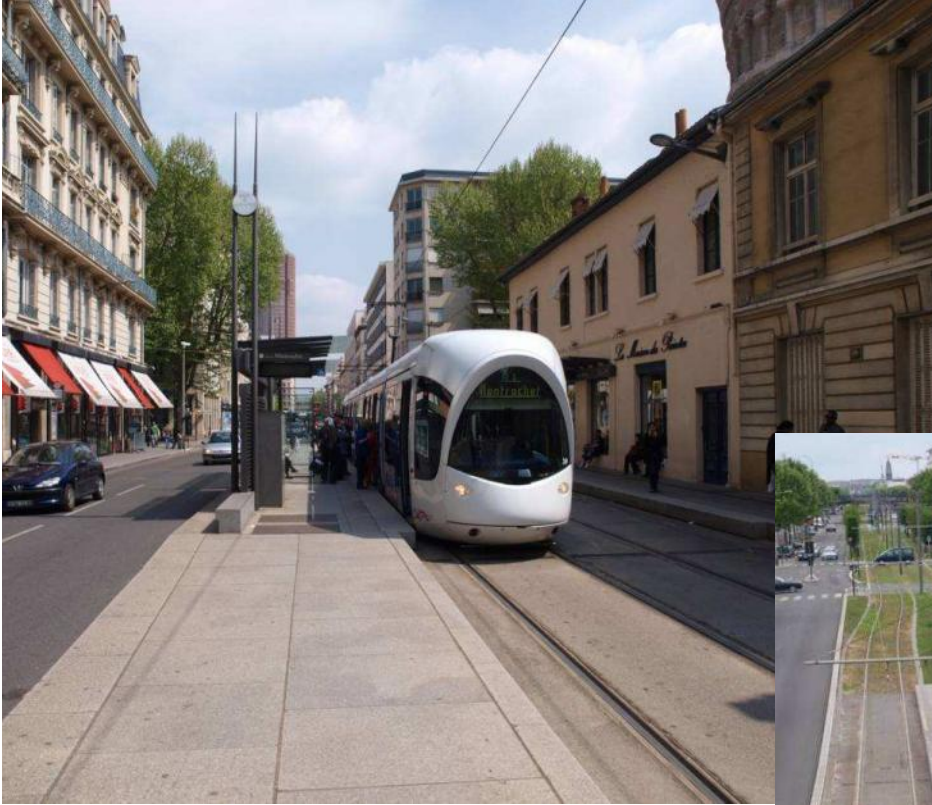
# LRT Network

[www.edmonton.ca/LRTProjects](http://www.edmonton.ca/LRTProjects)



# Urban Style LRT

[www.edmonton.ca/LRTProjects](http://www.edmonton.ca/LRTProjects)

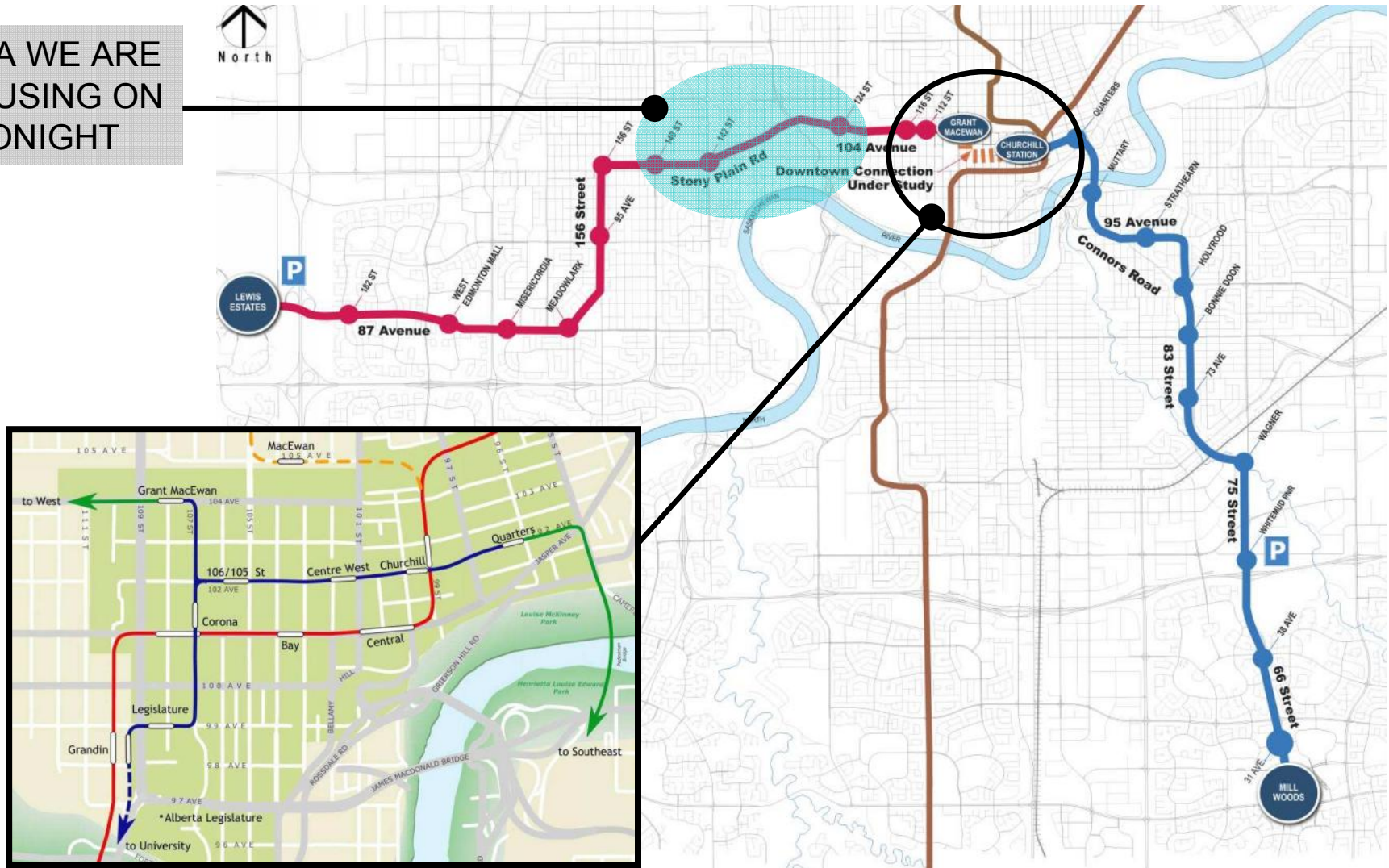


**CH2MHILL**

# Southeast and West LRT Corridors

[www.edmonton.ca/LRTProjects](http://www.edmonton.ca/LRTProjects)

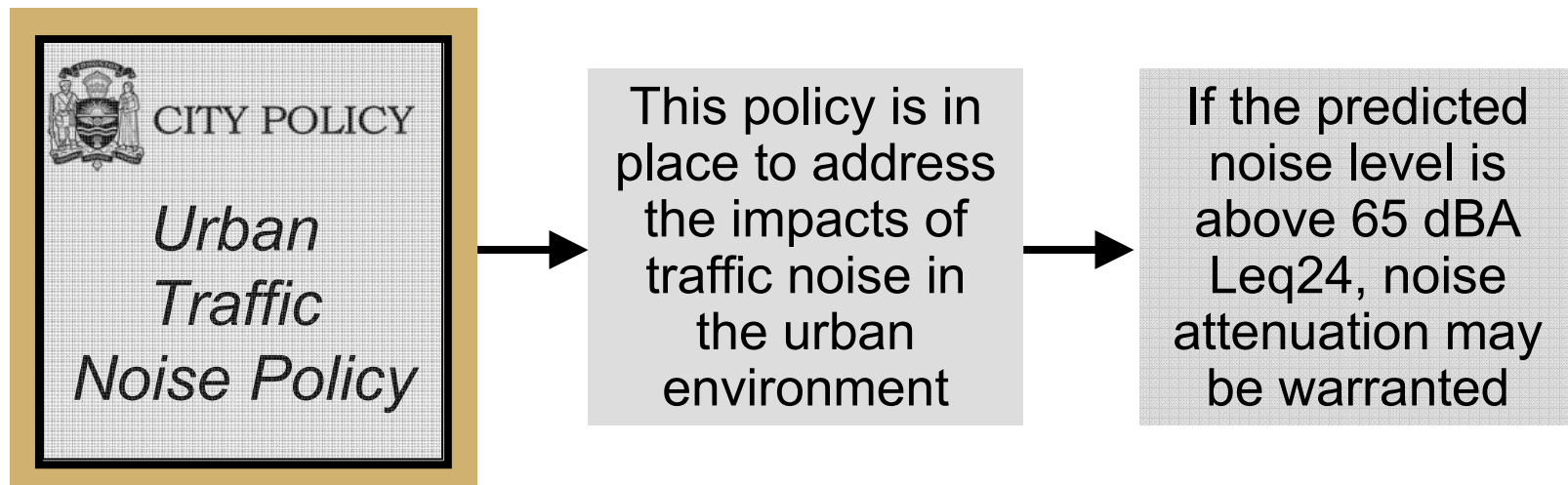
AREA WE ARE FOCUSING ON TONIGHT



# LRT Noise Impact

[www.edmonton.ca/LRTProjects](http://www.edmonton.ca/LRTProjects)

- LRT Noise Impact Study under way



# Roadway Network

[www.edmonton.ca/LRTPProjects](http://www.edmonton.ca/LRTPProjects)

- Removing 2 existing travel lanes along Stony Plain Road and 104 Avenue
- Reviewing key intersections



Stony Plain Road / 124 Street



Stony Plain Road / 149 Street



Stony Plain Road / 142 Street



104 Avenue / 118 Street



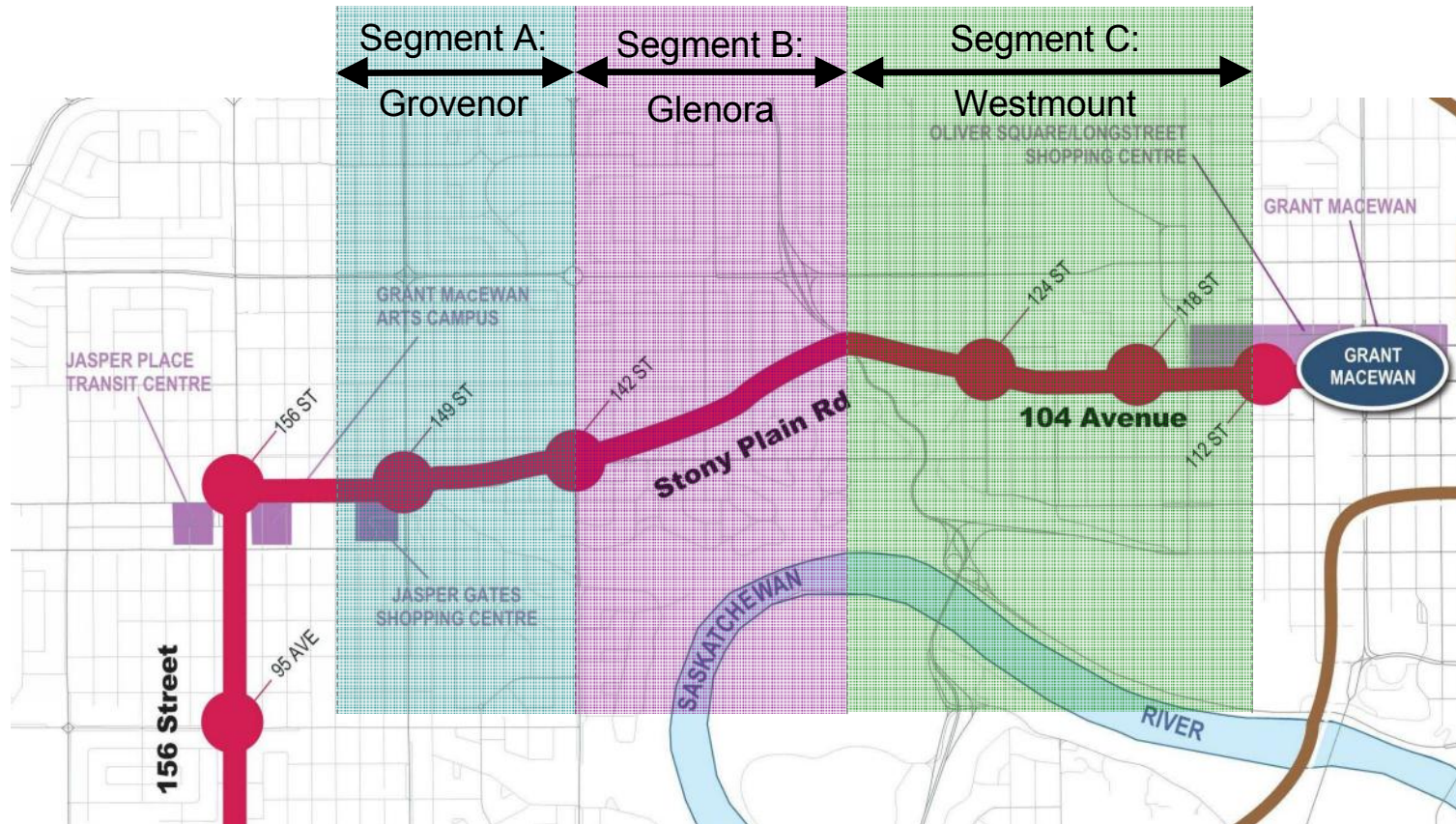
# Workshop Session Overview

[www.edmonton.ca/LRTProjects](http://www.edmonton.ca/LRTProjects)

- Session #1:
  - Right-of-way Alignment
- Session #2:
  - Station Location
- Session #3:
  - Neighbourhood and Business Access

# Neighbourhood Groupings

[www.edmonton.ca/LRTProjects](http://www.edmonton.ca/LRTProjects)







# West LRT

Stony Plain Road from 149 Str. to 124 Str.

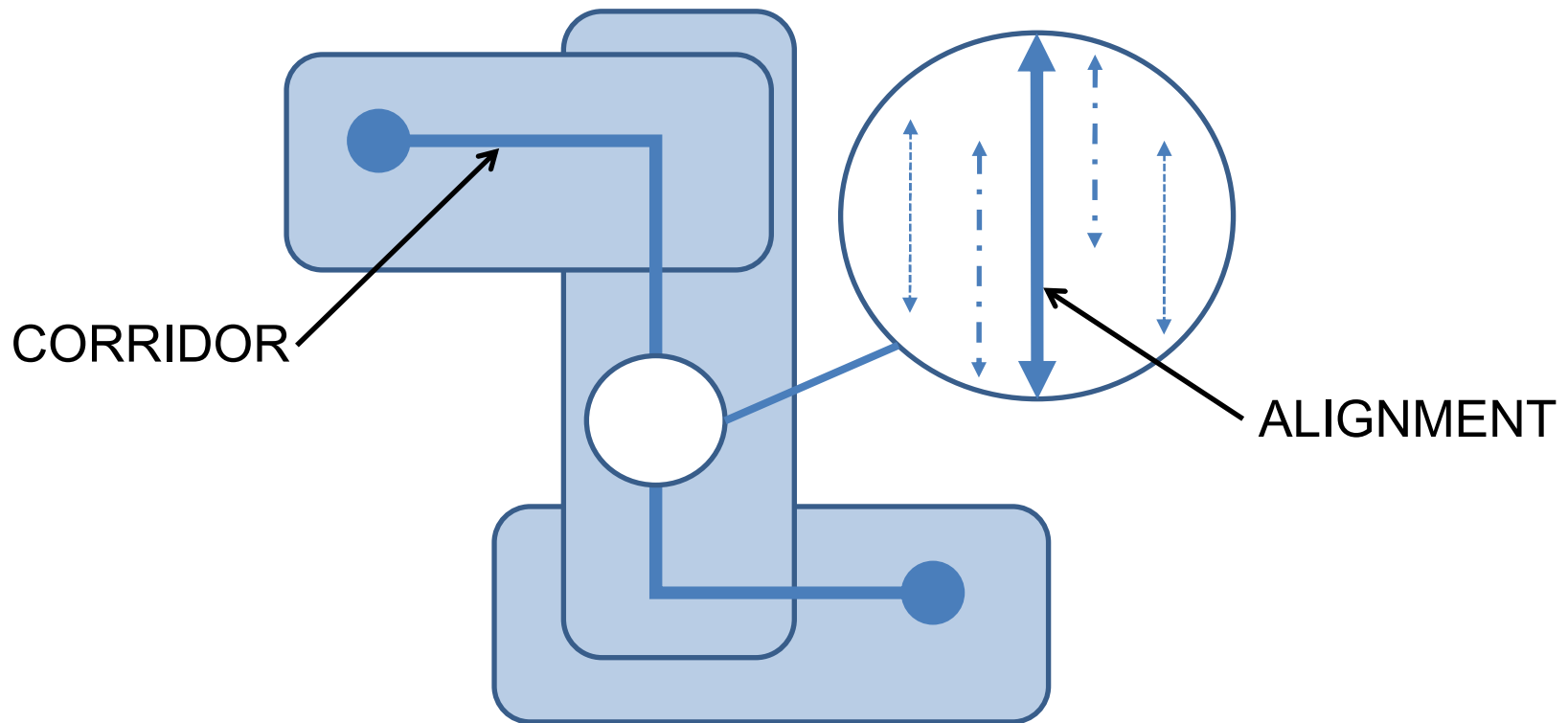
[www.edmonton.ca/LRTProjects](http://www.edmonton.ca/LRTProjects)

## Session #1

# Right-of-Way (ROW) Alignment Alternatives

# Corridor vs. Alignment

[www.edmonton.ca/LRTProjects](http://www.edmonton.ca/LRTProjects)



# Right-of-Way

[www.edmonton.ca/LRTProjects](http://www.edmonton.ca/LRTProjects)

- There are impacts
- Constrained Right-of-Way
- Minimize property requirements by removing:
  - service roads
  - traffic lanes
  - on-street parking





# ROW Alignment Options

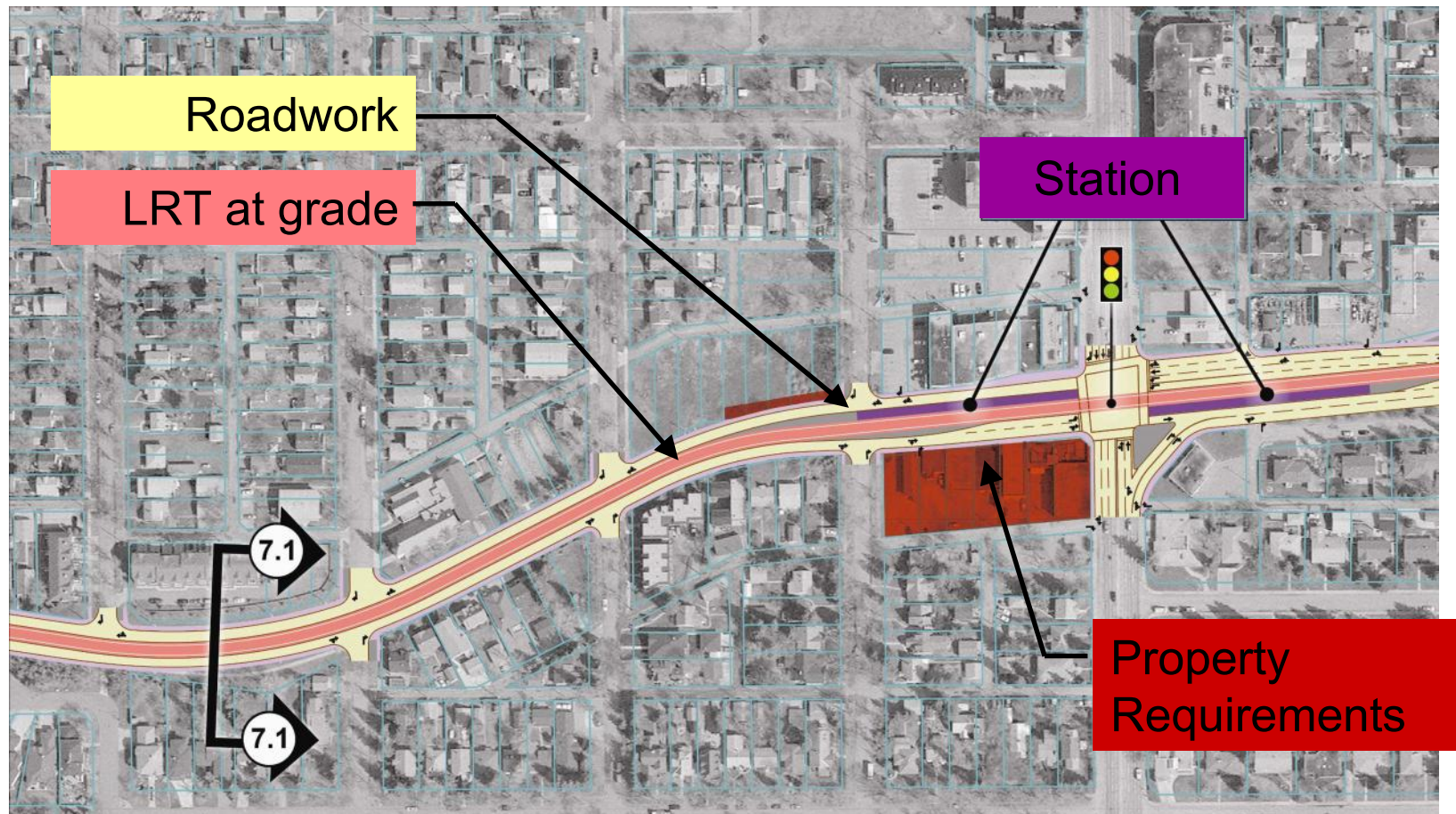
[www.edmonton.ca/LRTPProjects](http://www.edmonton.ca/LRTPProjects)

Comment on your chosen section

*– What needs to be considered for each alternative?*

# Legend / Key

[www.edmonton.ca/LRTProjects](http://www.edmonton.ca/LRTProjects)

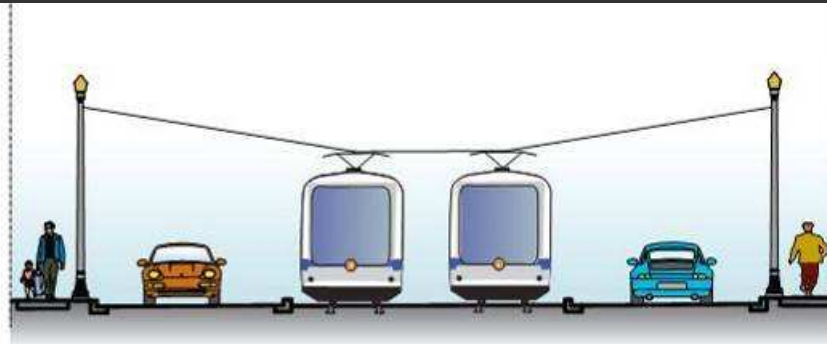


# ROW Alignment - Segment A

[www.edmonton.ca/LRTProjects](http://www.edmonton.ca/LRTProjects)



*ALTERNATIVE 1 – Centre Running LRT – 2 traffic lanes*

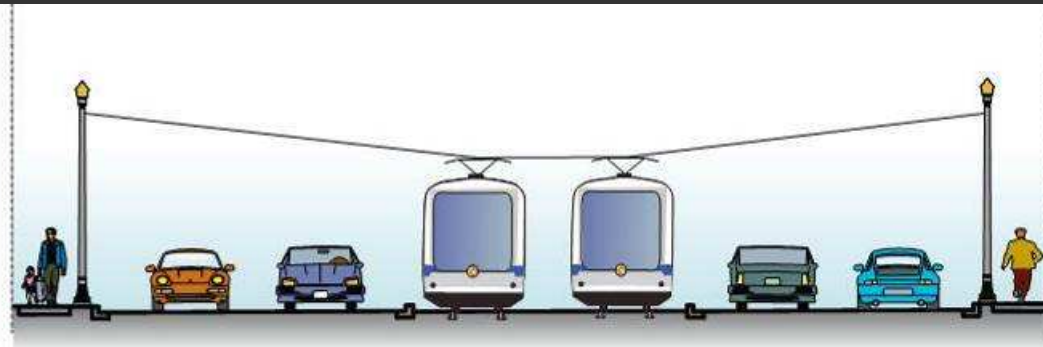


# ROW Alignment - Segment A

[www.edmonton.ca/LRTProjects](http://www.edmonton.ca/LRTProjects)



*ALTERNATIVE 2 – Centre Running LRT – 4 traffic lanes*

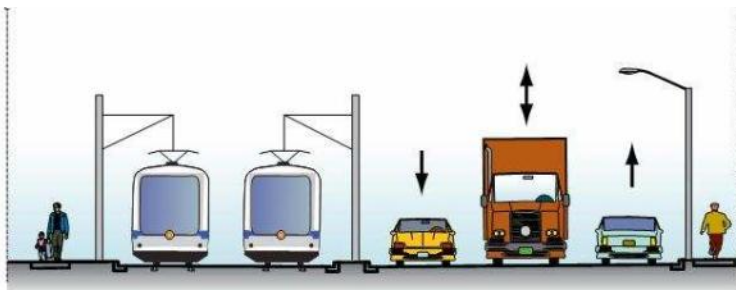


# ROW Alignment - Segment A

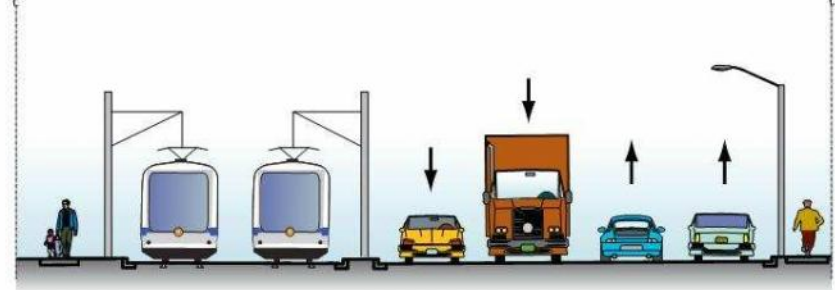
[www.edmonton.ca/LRTPProjects](http://www.edmonton.ca/LRTPProjects)



*ALTERNATIVE 3 – North Running LRT – 3 or 4 traffic lanes*



Potential – 3 Lanes

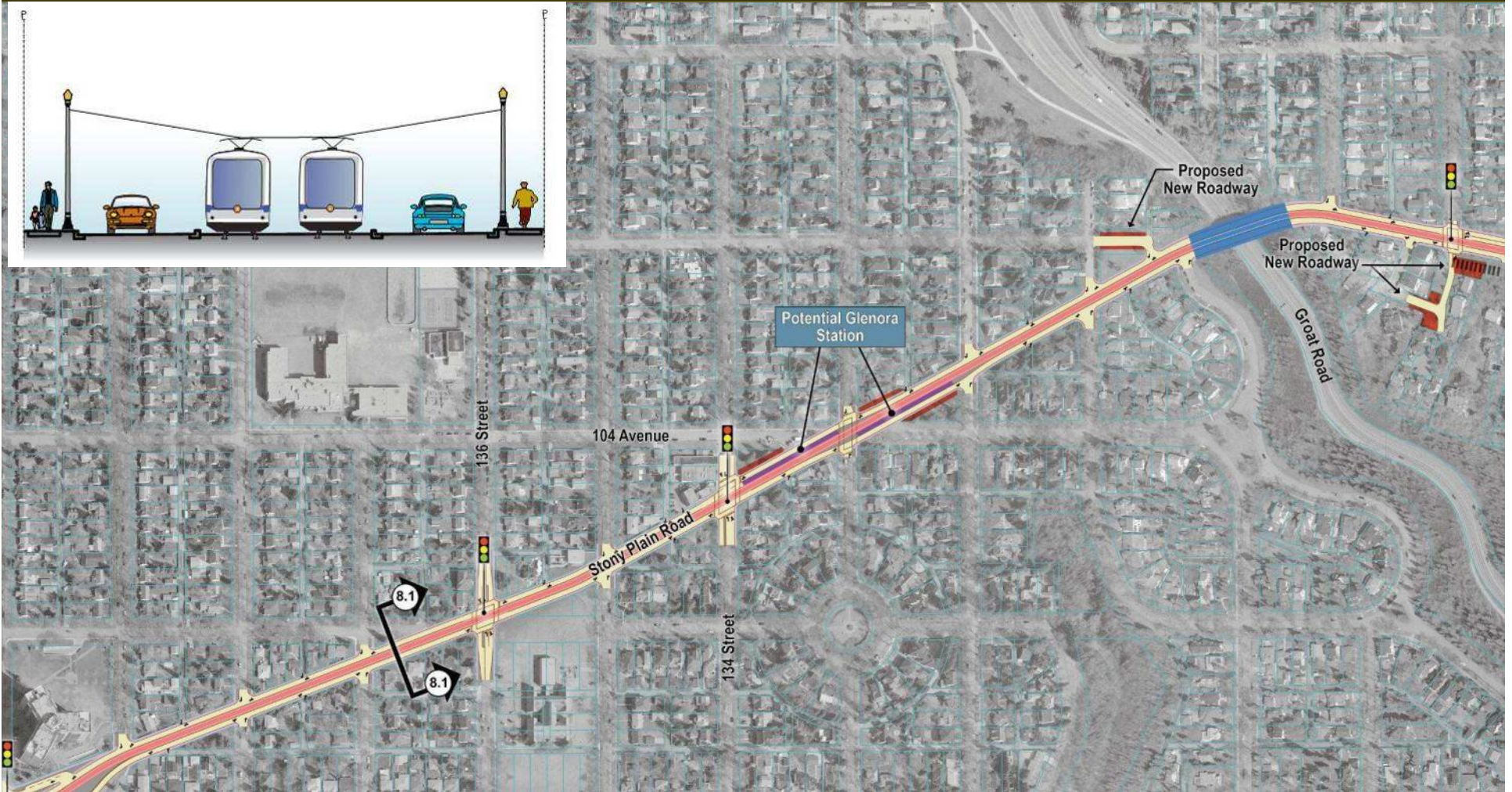
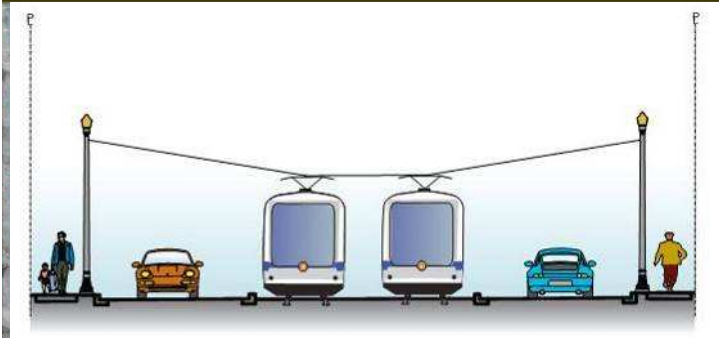


Potential – 4 Lanes



# ROW Alignment - Segment B

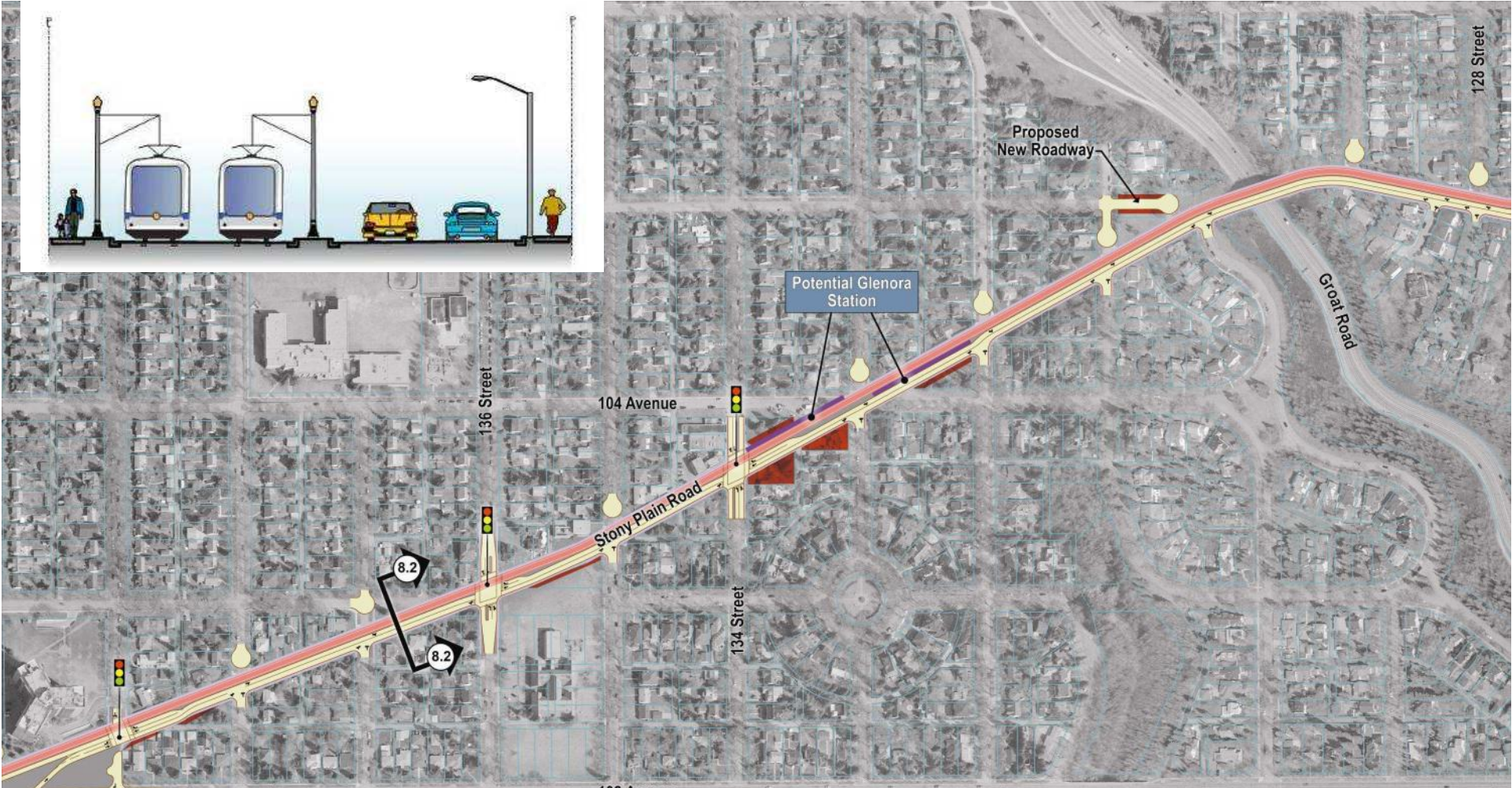
[www.edmonton.ca/LRTProjects](http://www.edmonton.ca/LRTProjects)



*ALTERNATIVE 1 – Centre Running LRT*

# ROW Alignment - Segment B

[www.edmonton.ca/LRTProjects](http://www.edmonton.ca/LRTProjects)



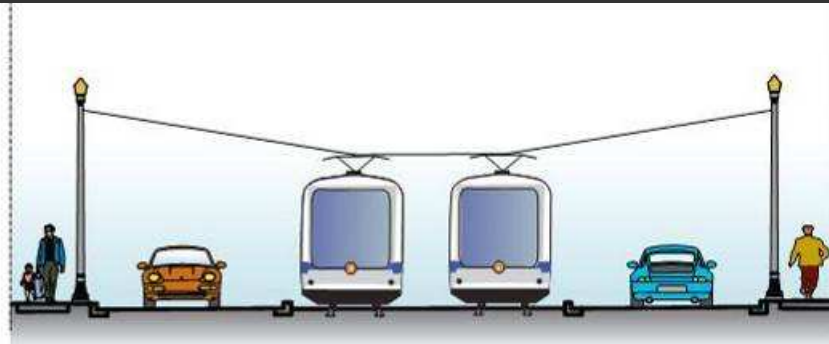
*ALTERNATIVE 2 – North Running LRT*

# ROW Alignment - Segment C

[www.edmonton.ca/LRTProjects](http://www.edmonton.ca/LRTProjects)



*ALTERNATIVE 1 – Centre Running LRT*

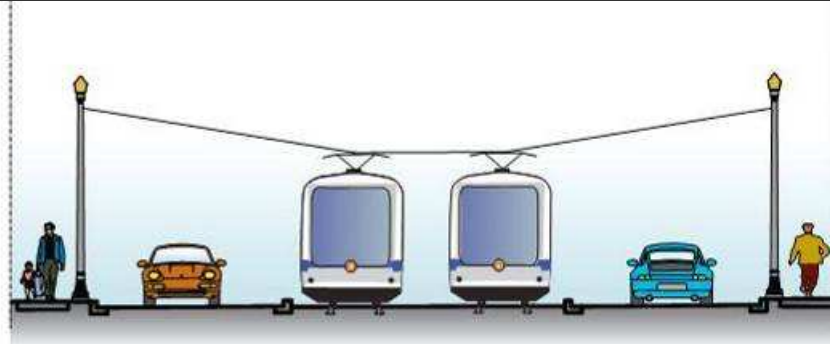


# ROW Alignment - Segment C

[www.edmonton.ca/LRTPProjects](http://www.edmonton.ca/LRTPProjects)



*ALTERNATIVE 2 – North Running LRT*





# ROW Alignment – Workshop Question

[www.edmonton.ca/LRTProjects](http://www.edmonton.ca/LRTProjects)

Comment on your chosen section

*Given that the corridor has been defined and that we are only talking about the ROW alignment alternatives,*

*– What needs to be considered for each alternative?*



# West LRT

Stony Plain Road from 149 Str. to 124 Str.

[www.edmonton.ca/LRTProjects](http://www.edmonton.ca/LRTProjects)

## Session #2

# Station Location and Configuration



# Station Location and Configuration Options

[www.edmonton.ca/LRTProjects](http://www.edmonton.ca/LRTProjects)

Comment on your chosen section

*– How does this station fit into your neighbourhood?*

*How does it affect your travel patterns?  
(pedestrian, cyclist, or driver)*

# Simple Stop Design

[www.edmonton.ca/LRTProjects](http://www.edmonton.ca/LRTProjects)

Low floor vehicles and platforms provide:

- Simple Infrastructure
- Fits into surrounding areas
- Improved neighbourhood connections

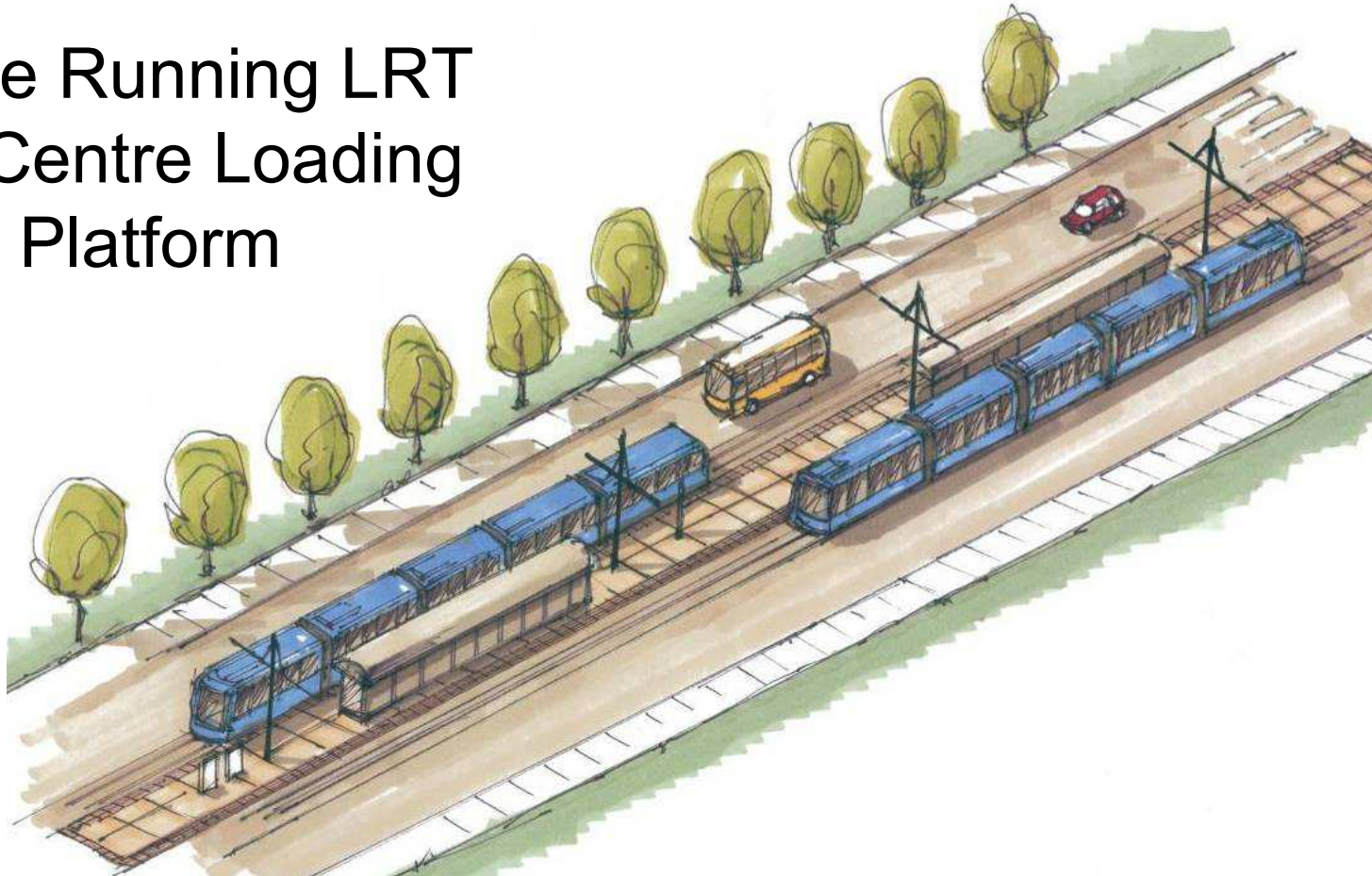




# Station Configuration

[www.edmonton.ca/LRTProjects](http://www.edmonton.ca/LRTProjects)

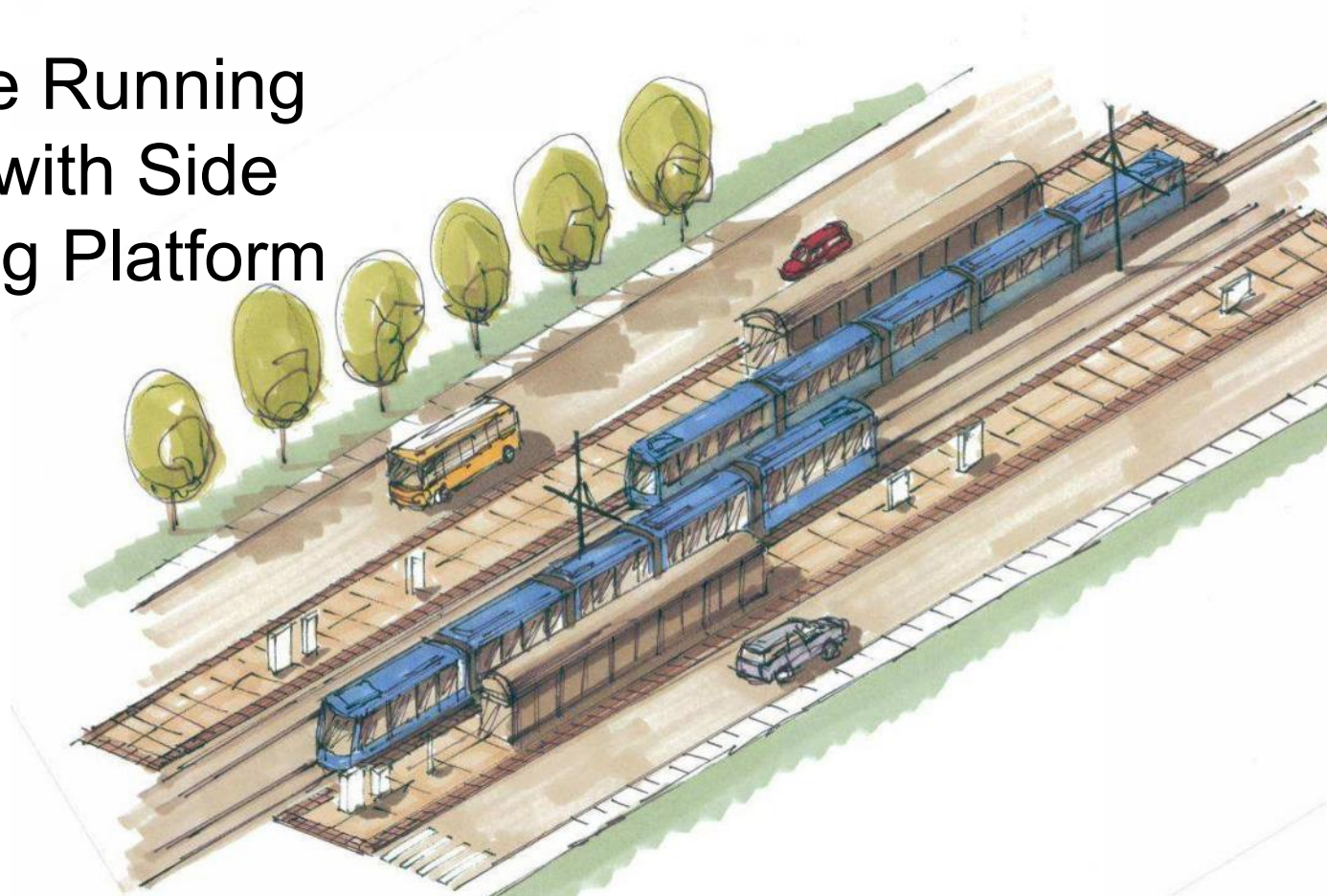
Centre Running LRT  
with Centre Loading  
Platform



# Station Configuration

[www.edmonton.ca/LRTProjects](http://www.edmonton.ca/LRTProjects)

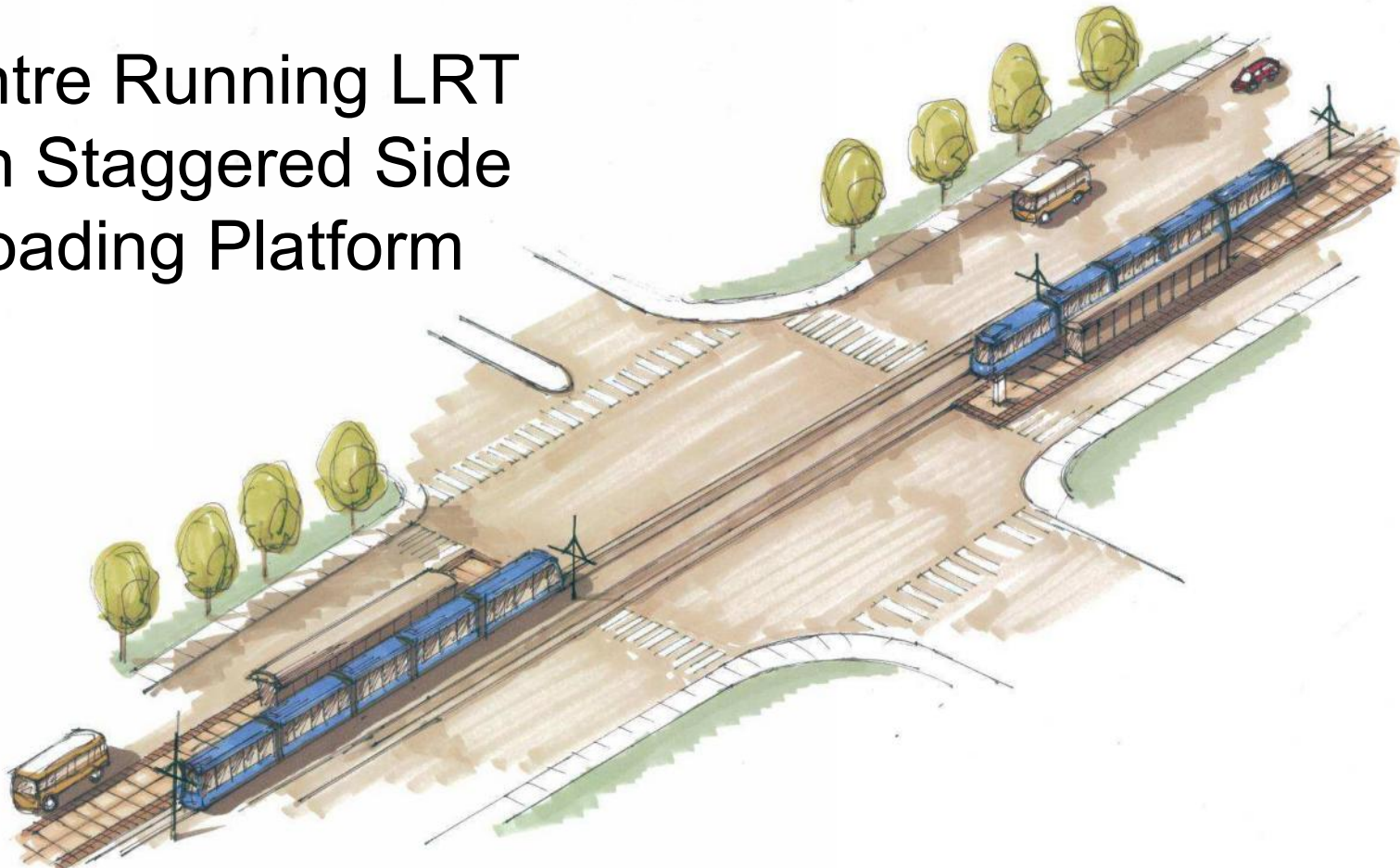
Centre Running  
LRT with Side  
Loading Platform



# Station Configuration

[www.edmonton.ca/LRTPProjects](http://www.edmonton.ca/LRTPProjects)

Centre Running LRT  
with Staggered Side  
Loading Platform





# Overview Station Alternatives

[www.edmonton.ca/LRTProjects](http://www.edmonton.ca/LRTProjects)

- Overview of station alternatives at:
  - Stony Plain Road / 149 Street Station
  - Stony Plain Road / 142 Street Station
  - Glenora Station
  - 104 Avenue / 124 Street Station
  - 104 Avenue / 118 Street Station

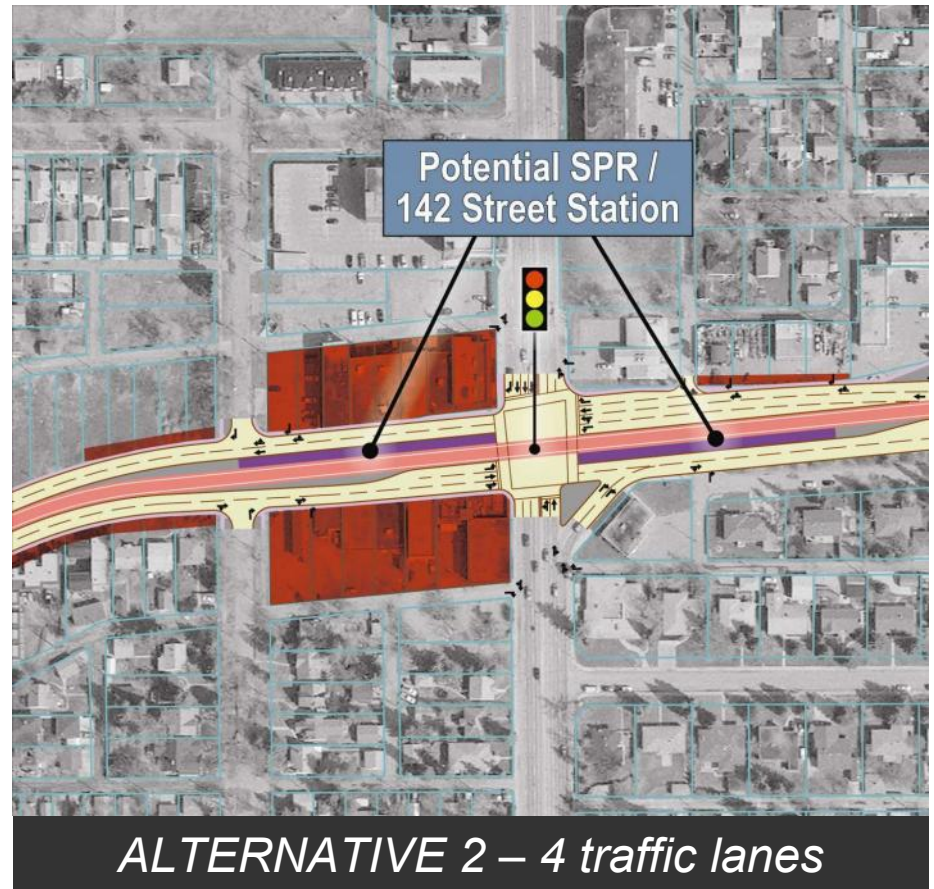
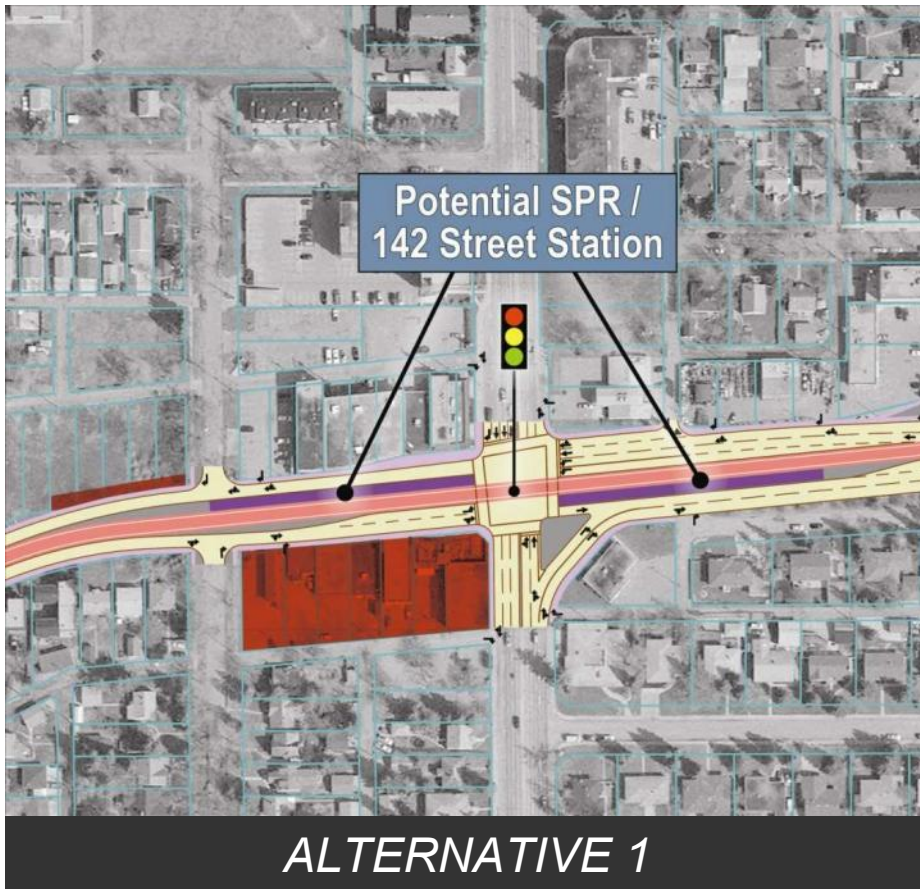
# Stony Plain Road / 149 Street Station

[www.edmonton.ca/LRTProjects](http://www.edmonton.ca/LRTProjects)



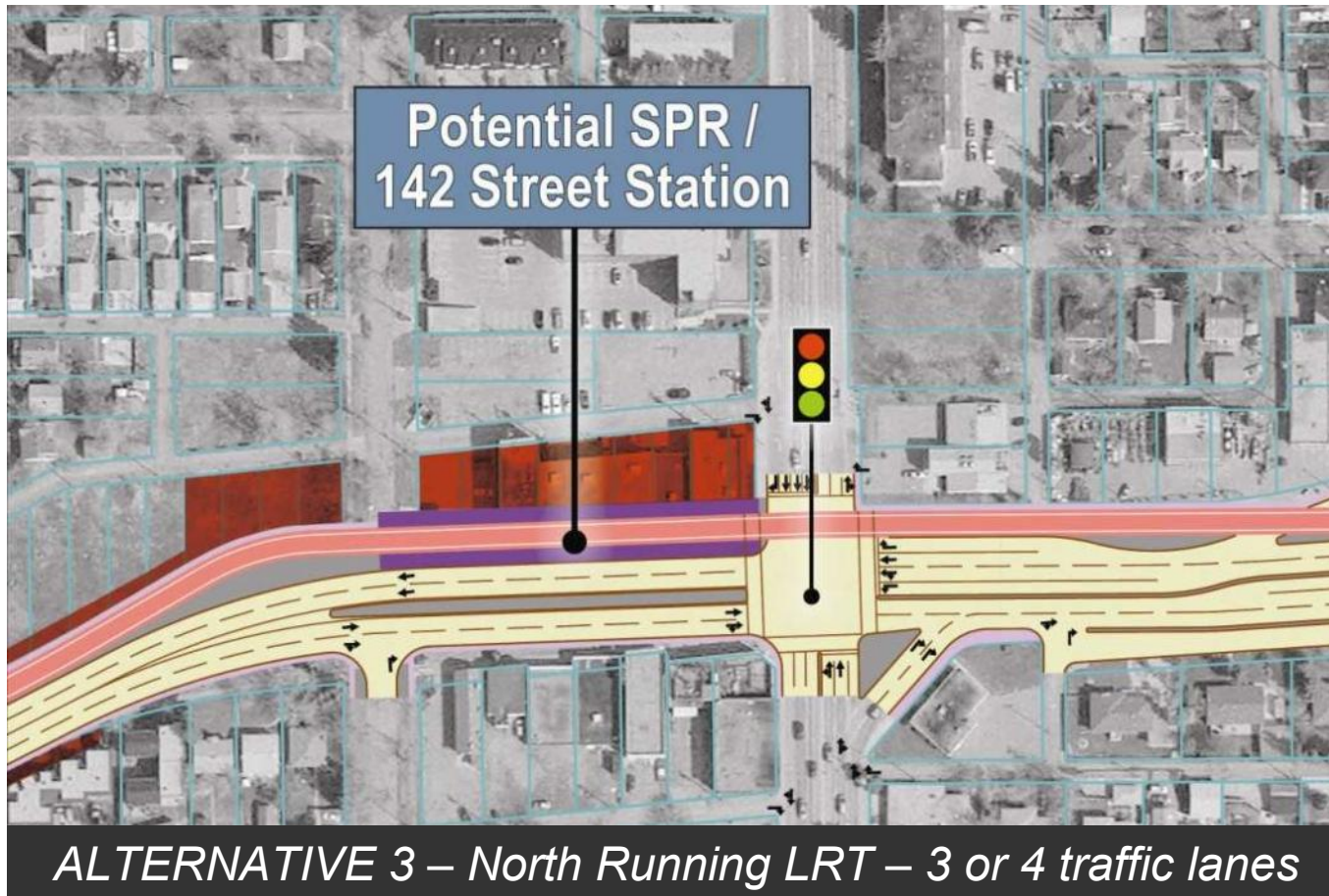
# Stony Plain Road / 142 Street Station

[www.edmonton.ca/LRTProjects](http://www.edmonton.ca/LRTProjects)



# Stony Plain Road / 142 Street Station

[www.edmonton.ca/LRTProjects](http://www.edmonton.ca/LRTProjects)



**CH2MHILL**

THE CITY OF  
**Edmonton**

# Glenora Station

[www.edmonton.ca/LRTPProjects](http://www.edmonton.ca/LRTPProjects)

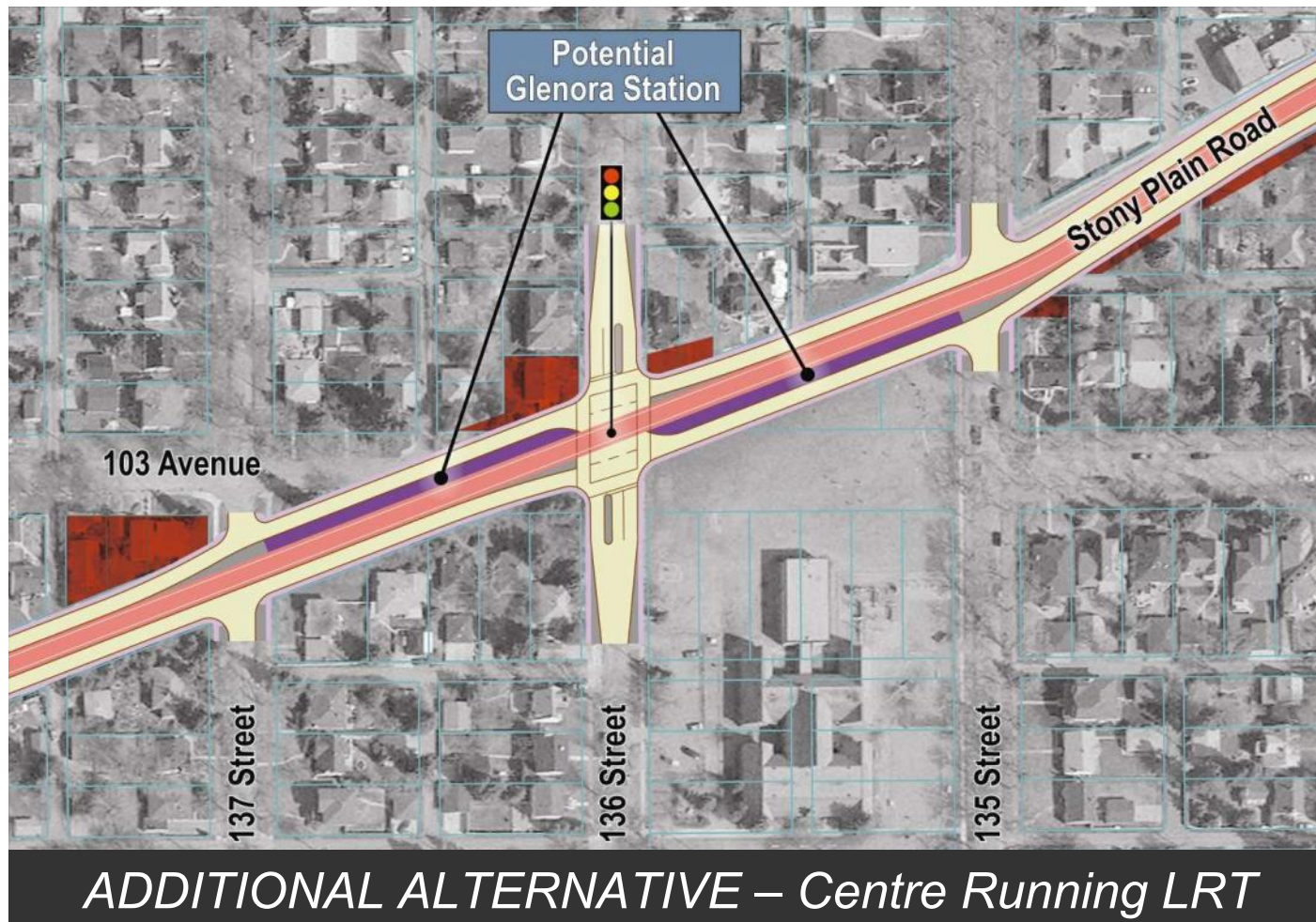


*ALTERNATIVE 1 – New Proposed Station – Centre Running LRT*



# Glenora Station

[www.edmonton.ca/LRTProjects](http://www.edmonton.ca/LRTProjects)



# Glenora Station

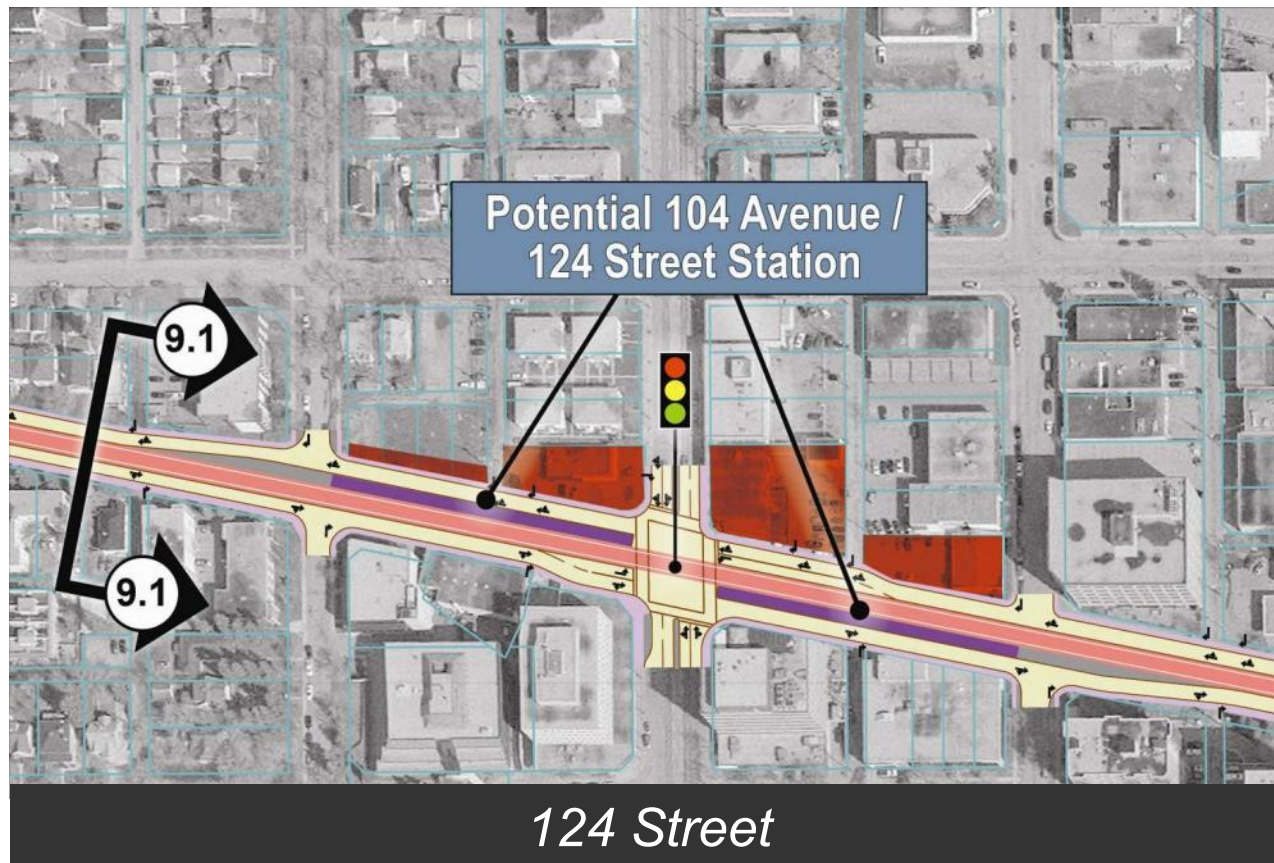
[www.edmonton.ca/LRTProjects](http://www.edmonton.ca/LRTProjects)



*ALTERNATIVE 2 – New Proposed Station – North Running LRT*

# 124 Street Station

[www.edmonton.ca/LRTPProjects](http://www.edmonton.ca/LRTPProjects)



# 118 Street Station

[www.edmonton.ca/LRTPProjects](http://www.edmonton.ca/LRTPProjects)





# Stations - Workshop Questions

[www.edmonton.ca/LRTProjects](http://www.edmonton.ca/LRTProjects)

Comment on the station in your neighbourhood

*– How does this station fit into your neighbourhood?*

*How does it affect your travel patterns?  
(pedestrian, cyclist, or driver)*



# West LRT

## Stony Plain Road from 149 Str. to 124 Str.

[www.edmonton.ca/LRTProjects](http://www.edmonton.ca/LRTProjects)

# Break



# West LRT

Stony Plain Road from 149 Str. to 124 Str.

[www.edmonton.ca/LRTProjects](http://www.edmonton.ca/LRTProjects)

## Session #3

# Neighbourhood and Business Access



# Neighbourhood and Business Access

[www.edmonton.ca/LRTPProjects](http://www.edmonton.ca/LRTPProjects)

Comment on your chosen section

- How do the alternatives affect the way you get around and in/out of your neighbourhood and access businesses?*

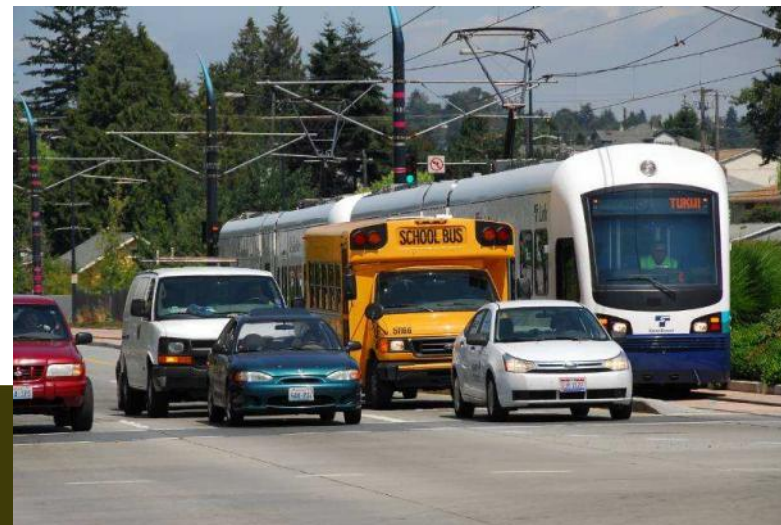


# Neighbourhood and Business Access

[www.edmonton.ca/LRTProjects](http://www.edmonton.ca/LRTProjects)

## Basic Principles of Neighbourhood Access:

- Different roads serve different purposes
- LRT will change direct access to roads within its corridor (like Stony Plain Road)
- Traffic signals will be located on major roads to facilitate LRT movement



# Neighbourhood and Business Access

[www.edmonton.ca/LRTProjects](http://www.edmonton.ca/LRTProjects)

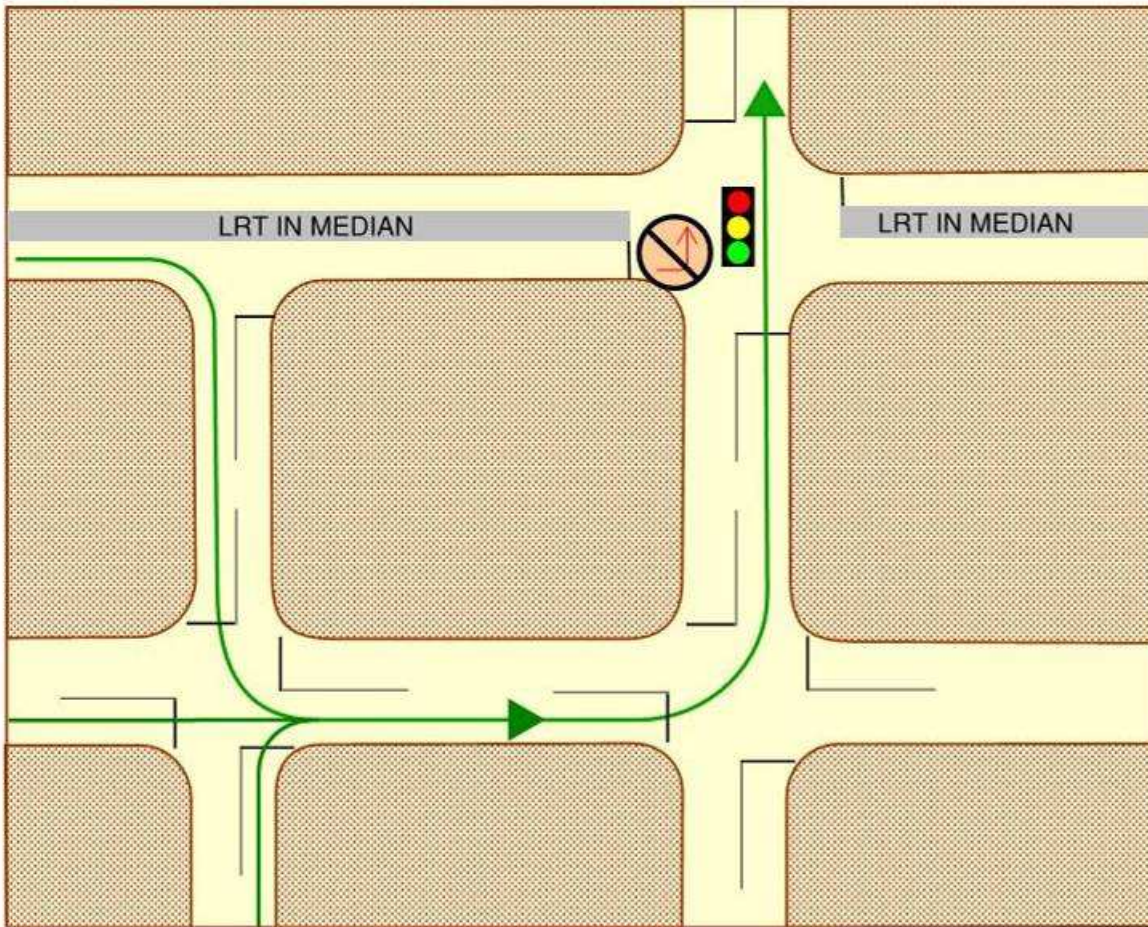
## Basic Principles of Neighbourhood Access:

- Turns across LRT tracks will be at signalized intersections
- Not ALL signalized intersections will allow left hand turns
- A supporting street and circulation system will be provided



# Neighbourhood and Business Access

[www.edmonton.ca/LRTProjects](http://www.edmonton.ca/LRTProjects)



## ACCESS

- Existing left turn movement at intersection removed
- Future jug-handle movements provided

# Neighbourhood and Business Access – Segment A

[www.edmonton.ca/LRTProjects](http://www.edmonton.ca/LRTProjects)



*ALTERNATIVE 1 – Centre Running LRT - 2 traffic lanes*

# Neighbourhood and Business Access – Segment A

[www.edmonton.ca/LRTPProjects](http://www.edmonton.ca/LRTPProjects)



*ALTERNATIVE 2 – Centre Running LRT – 4 traffic lanes*

# Neighbourhood and Business Access – Segment A

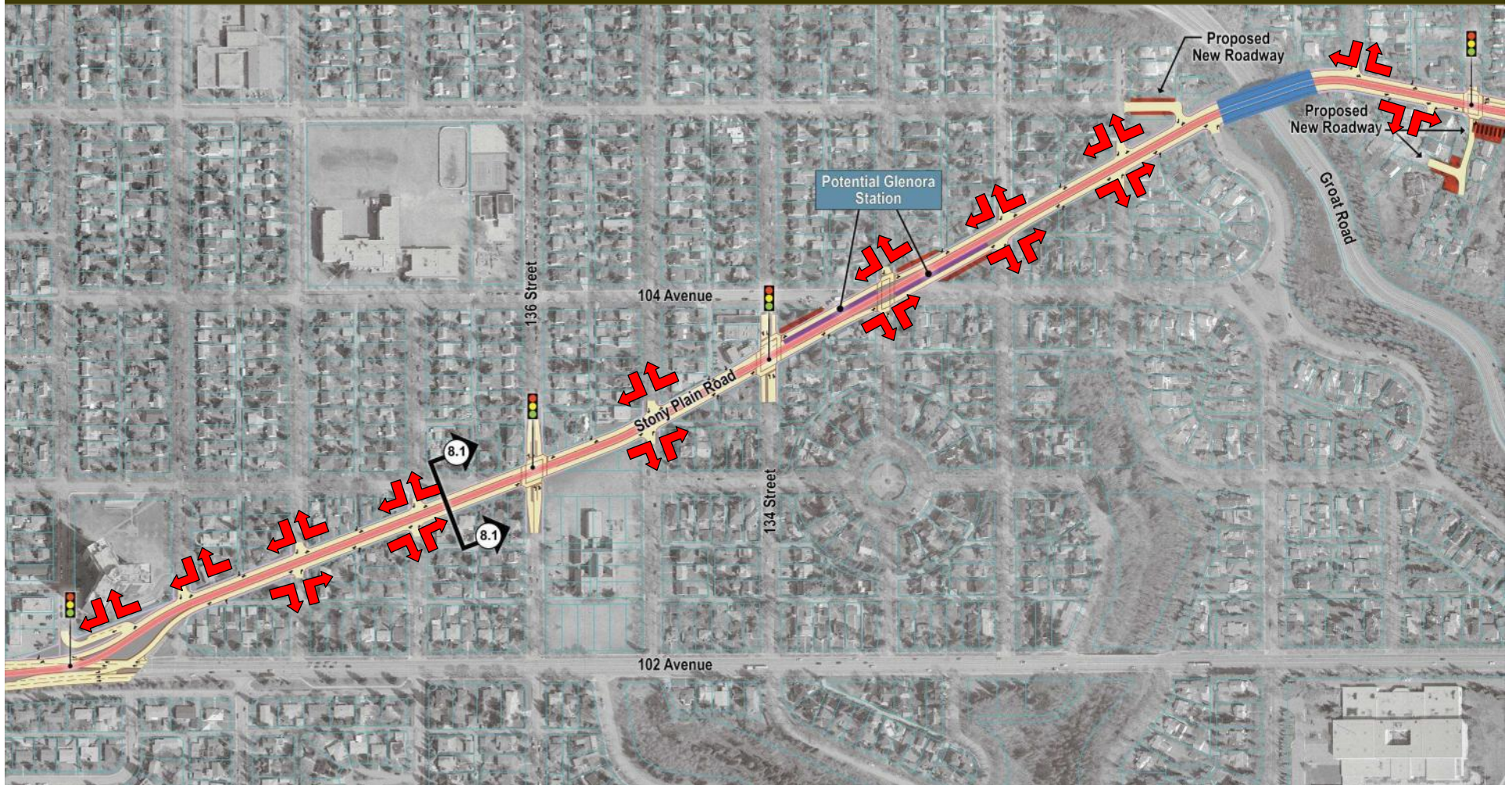
[www.edmonton.ca/LRTPProjects](http://www.edmonton.ca/LRTPProjects)



*ALTERNATIVE 3 – North Running LRT – 3 or 4 traffic lanes*

# Neighbourhood and Business Access – Segment B

[www.edmonton.ca/LRTPProjects](http://www.edmonton.ca/LRTPProjects)



*ALTERNATIVE 1 – Centre Running LRT*

# Neighbourhood and Business Access – Segment B

[www.edmonton.ca/LRTProjects](http://www.edmonton.ca/LRTProjects)

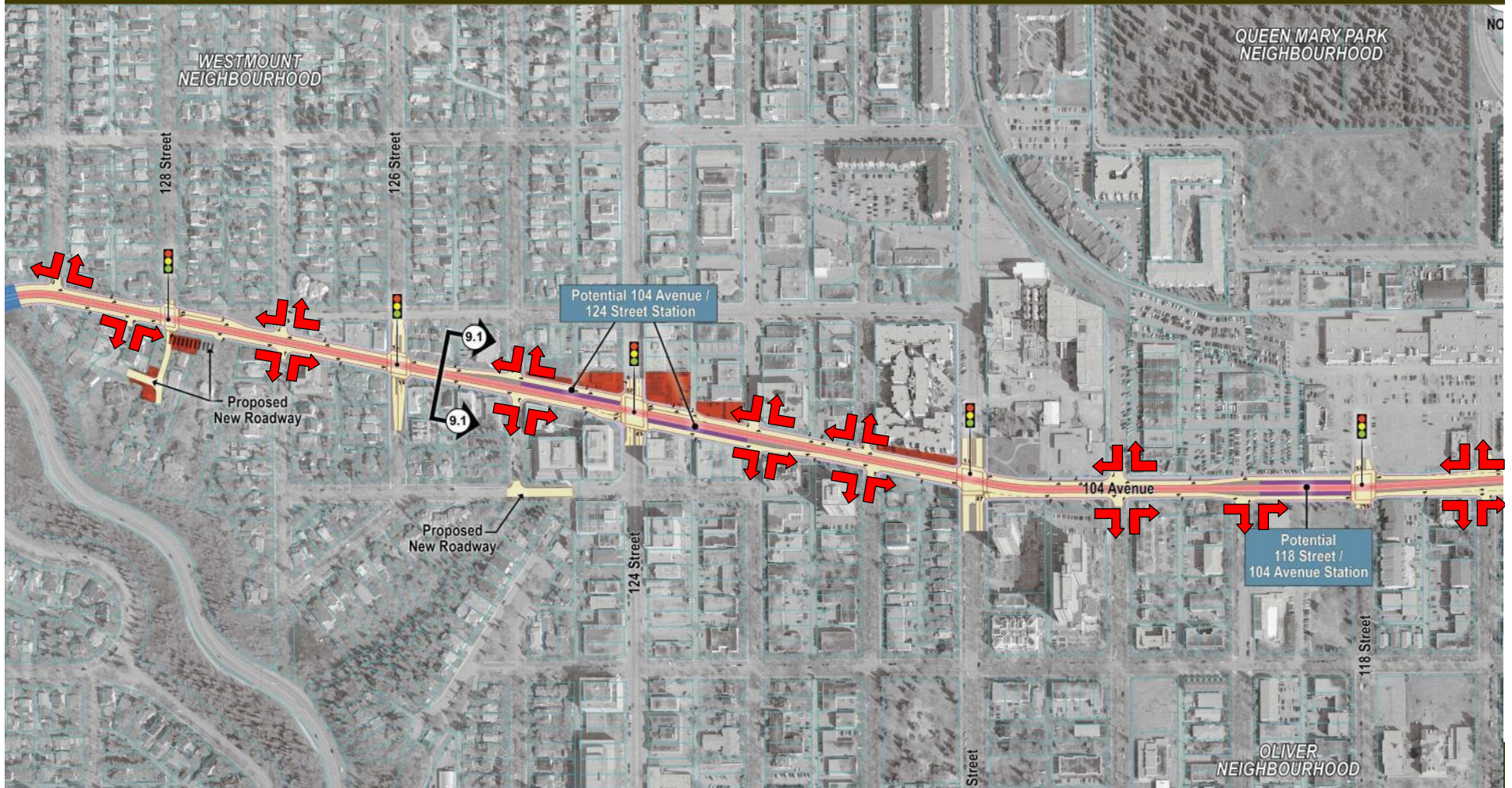


*ALTERNATIVE 2 – North Running LRT*



# Neighbourhood and Business Access – Segment C

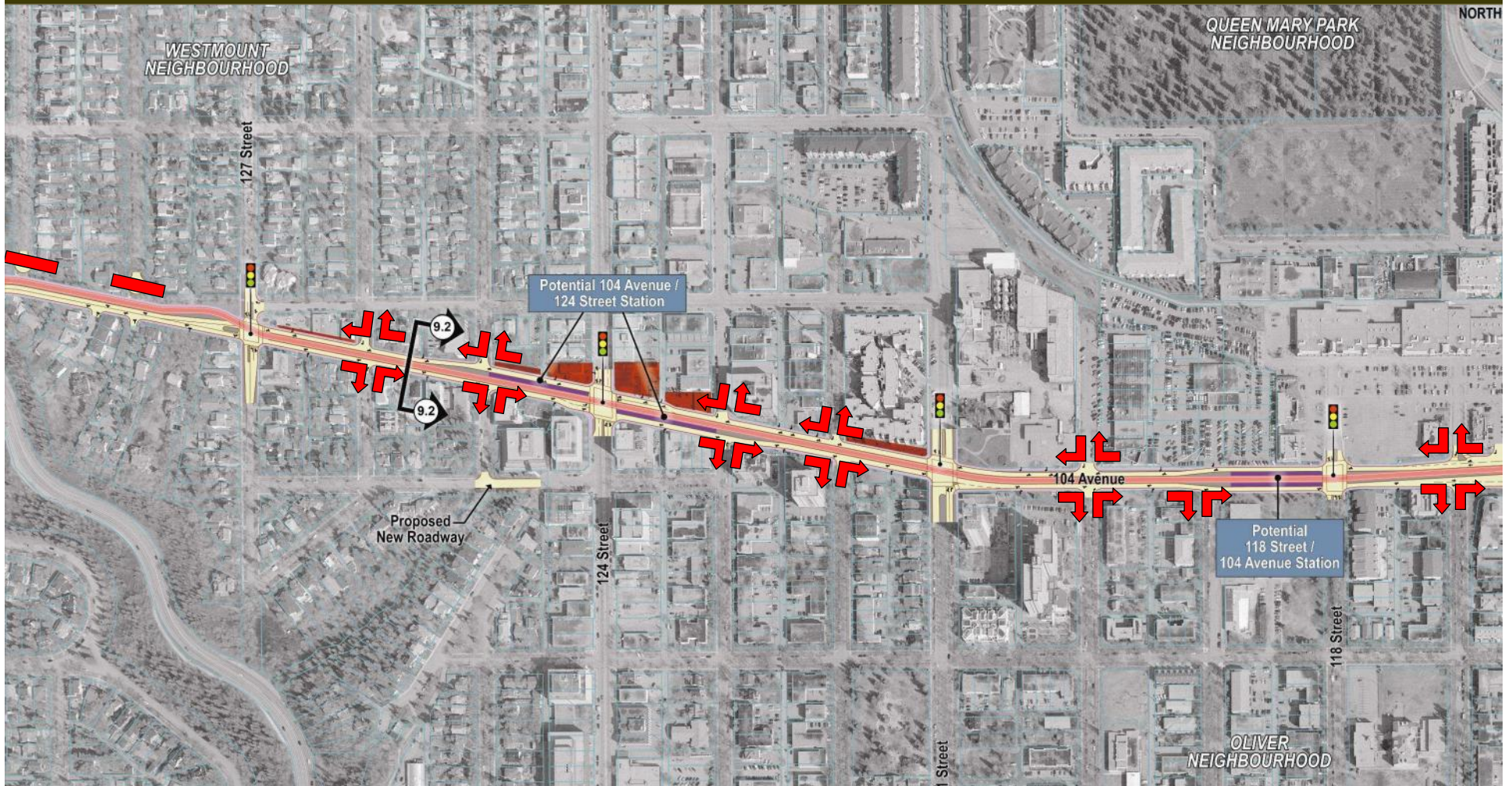
[www.edmonton.ca/LRTPProjects](http://www.edmonton.ca/LRTPProjects)



*ALTERNATIVE 1 – Centre Running LRT*

# Neighbourhood and Business Access – Segment C

[www.edmonton.ca/LRTPProjects](http://www.edmonton.ca/LRTPProjects)



*ALTERNATIVE 2 – North Running LRT*



## Neighbourhood and Business Access – Workshop Questions

[www.edmonton.ca/LRTProjects](http://www.edmonton.ca/LRTProjects)

Comment on your chosen section

*– How do the alternatives affect the way you get around and in/out of your neighbourhood and access businesses?*



# Wrap Up

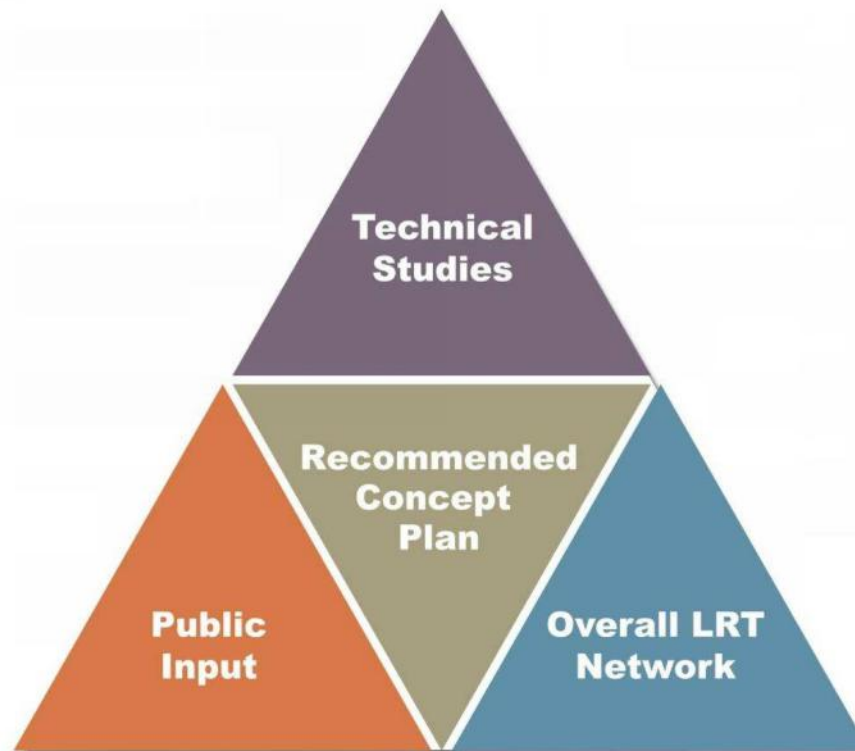
[www.edmonton.ca/LRTProjects](http://www.edmonton.ca/LRTProjects)

- Fill out Questionnaires
- Attend other workshops
- Presentation available on website

[www.edmonton.ca/LRTProjects](http://www.edmonton.ca/LRTProjects)

# Wrap Up

[www.edmonton.ca/LRTProjects](http://www.edmonton.ca/LRTProjects)





# LRT Workshop Session Schedule

[www.edmonton.ca/LRTProjects](http://www.edmonton.ca/LRTProjects)

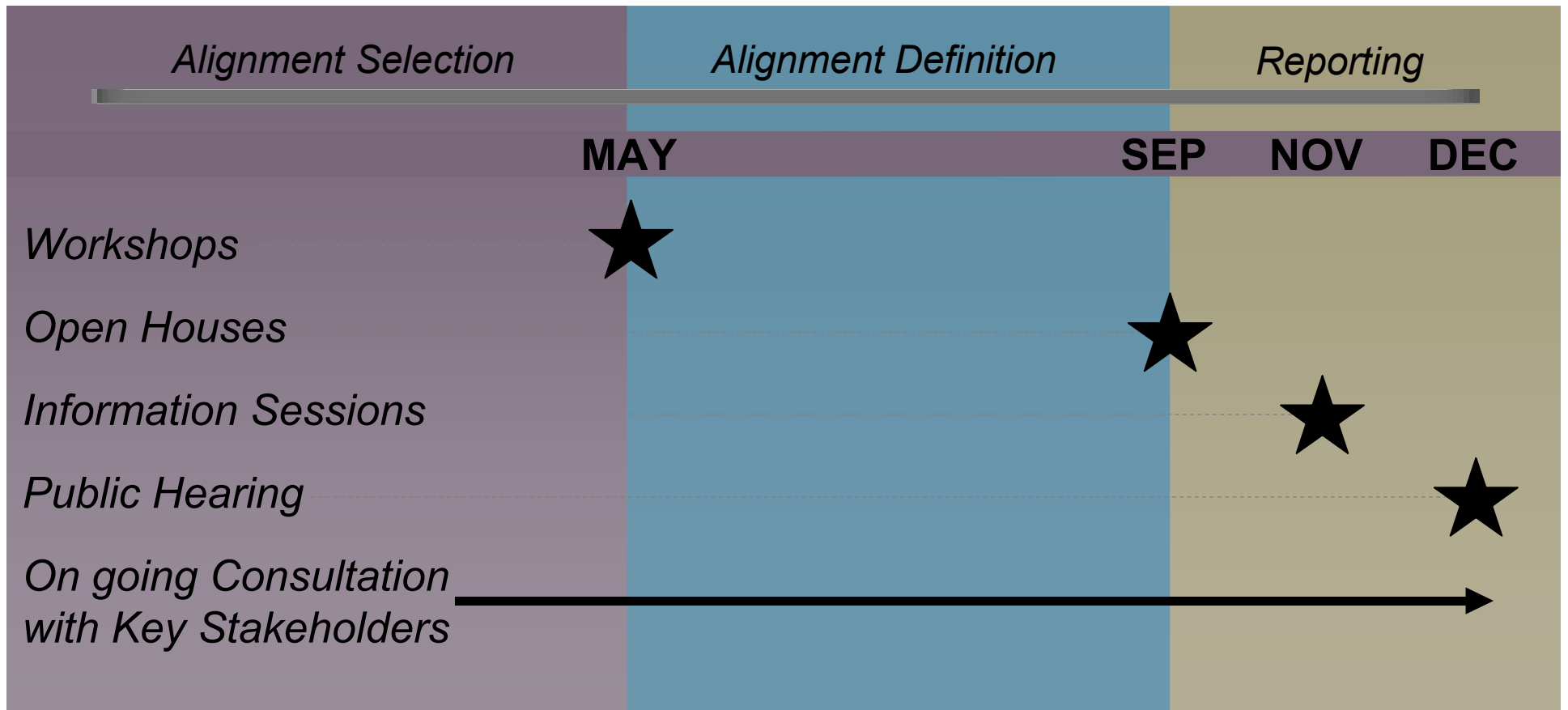
West LRT	
May 4, 2010	Lewis Estates to Meadowlark
May 6, 2010	Meadowlark to SPR/142 St.
May 12, 2010	SPR/149 St. to SPR/124 St.
May 13, 2010	Groat Road to Downtown

Southeast LRT	
May 18, 2010	Downtown to 95 Ave/83 St
May 19, 2010	Strathearn to Whyte Ave
May 26, 2010	Bonnie Doon to Wagner
May 27, 2010	Wagner to Mill Woods

[www.edmonton.ca/LRTProjects](http://www.edmonton.ca/LRTProjects)

# Next Steps

[www.edmonton.ca/LRTProjects](http://www.edmonton.ca/LRTProjects)





# West LRT

## Meadowlark to Stony Plain Road / 142 Street

[www.edmonton.ca/LRTProjects](http://www.edmonton.ca/LRTProjects)

# Thank you!