

TERWILLEGAR DRIVE (TUC TO WHITEMUD DRIVE) CONCEPT PLANNING STUDY UPDATE CENTRAL SECTION OPTION C

DESCRIPTION:

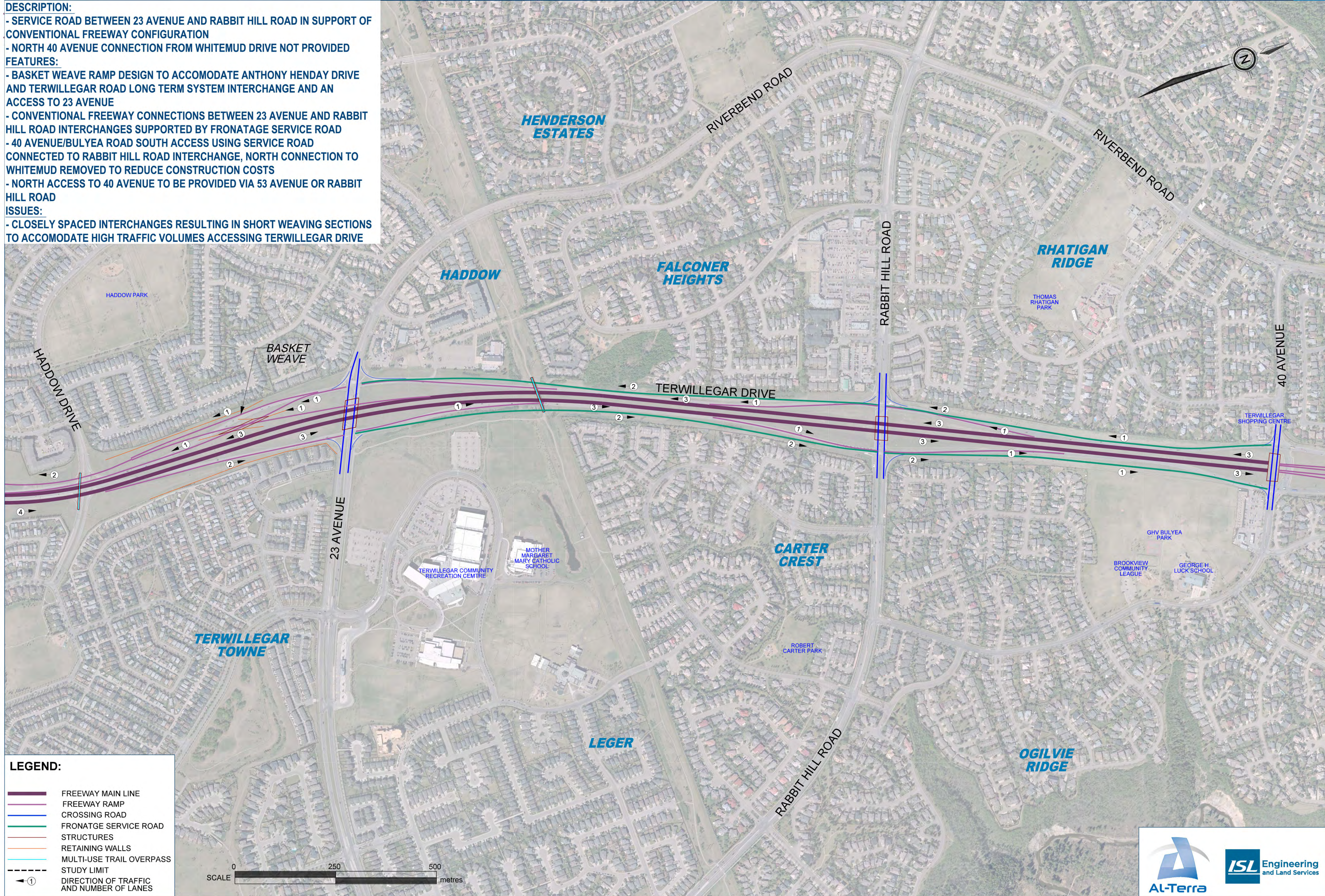
- SERVICE ROAD BETWEEN 23 AVENUE AND RABBIT HILL ROAD IN SUPPORT OF CONVENTIONAL FREEWAY CONFIGURATION
- NORTH 40 AVENUE CONNECTION FROM WHITEMUD DRIVE NOT PROVIDED

FEATURES:

- BASKET WEAVE RAMP DESIGN TO ACCOMMODATE ANTHONY HENDAY DRIVE AND TERWILLEGAR ROAD LONG TERM SYSTEM INTERCHANGE AND AN ACCESS TO 23 AVENUE
- CONVENTIONAL FREEWAY CONNECTIONS BETWEEN 23 AVENUE AND RABBIT HILL ROAD INTERCHANGES SUPPORTED BY FRONTAGE SERVICE ROAD
- 40 AVENUE/BULYEA ROAD SOUTH ACCESS USING SERVICE ROAD CONNECTED TO RABBIT HILL ROAD INTERCHANGE, NORTH CONNECTION TO WHITEMUD REMOVED TO REDUCE CONSTRUCTION COSTS
- NORTH ACCESS TO 40 AVENUE TO BE PROVIDED VIA 53 AVENUE OR RABBIT HILL ROAD

ISSUES:

- CLOSELY SPACED INTERCHANGES RESULTING IN SHORT WEAVING SECTIONS TO ACCOMMODATE HIGH TRAFFIC VOLUMES ACCESSING TERWILLEGAR DRIVE



LEGEND:

- FREEWAY MAIN LINE
- FREEWAY RAMP
- CROSSING ROAD
- FRONTAGE SERVICE ROAD
- STRUCTURES
- RETAINING WALLS
- MULTI-USE TRAIL OVERPASS
- STUDY LIMIT
- ① DIRECTION OF TRAFFIC AND NUMBER OF LANES