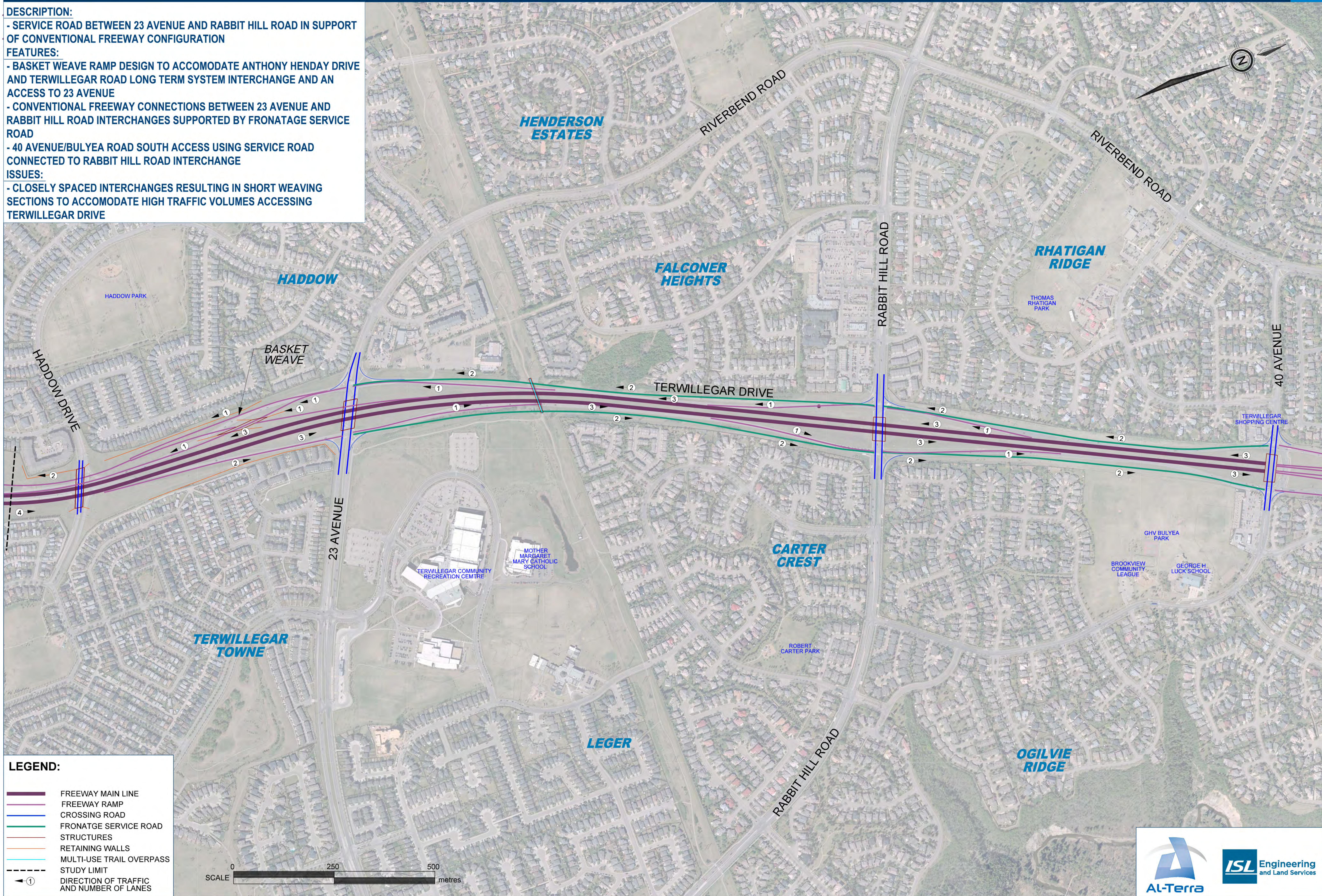


TERWILLEGAR DRIVE (TUC TO WHITEMUD DRIVE) CONCEPT PLANNING STUDY UPDATE CENTRAL SECTION OPTION B

DESCRIPTION:
 - SERVICE ROAD BETWEEN 23 AVENUE AND RABBIT HILL ROAD IN SUPPORT OF CONVENTIONAL FREEWAY CONFIGURATION

FEATURES:
 - BASKET WEAVE RAMP DESIGN TO ACCOMMODATE ANTHONY HENDAY DRIVE AND TERWILLEGAR ROAD LONG TERM SYSTEM INTERCHANGE AND AN ACCESS TO 23 AVENUE
 - CONVENTIONAL FREEWAY CONNECTIONS BETWEEN 23 AVENUE AND RABBIT HILL ROAD INTERCHANGES SUPPORTED BY FRONATGE SERVICE ROAD
 - 40 AVENUE/BULYEA ROAD SOUTH ACCESS USING SERVICE ROAD CONNECTED TO RABBIT HILL ROAD INTERCHANGE

ISSUES:
 - CLOSELY SPACED INTERCHANGES RESULTING IN SHORT WEAVING SECTIONS TO ACCOMMODATE HIGH TRAFFIC VOLUMES ACCESSING TERWILLEGAR DRIVE



LEGEND:

- FREEWAY MAIN LINE
- FREEWAY RAMP
- CROSSING ROAD
- FRONATGE SERVICE ROAD
- STRUCTURES
- RETAINING WALLS
- MULTI-USE TRAIL OVERPASS
- STUDY LIMIT
- 1 DIRECTION OF TRAFFIC AND NUMBER OF LANES

