

# Preliminary Design for Edmonton's Southeast to West Light Rail Transit

September 20, 2012 - Area 3 – Argyll Road to Strathearn



# Tonight's Agenda

- Meeting Purpose
- Public Involvement
- SE to West LRT Overview
- Preliminary Design—Area 3
- Next Steps
- Question and Answer





# **MEETING PURPOSE**



# Meeting Purpose

- To build upon input received from Stage 3 Public Involvement
- To present **preferred preliminary design** for Areas 3 and other key components of route
- To present rationale for recommendations
- To receive feedback to help confirm the **preferred preliminary design**
- To respond to questions

# Project Schedule

## Where were we?

---

**Conceptual Design:**

2009 - 2011 (Completed)

**City Council Approval  
of Concept Plan:**

2011 - 2012 (Completed)



## Where are we going?

---

**Public Involvement and  
Communication:**

2011 - 2013 (In Progress)

**Preliminary Design:**

Completed in Fall 2013

**Detailed Design  
and Construction:**

In Future



# **PUBLIC INVOLVEMENT**

# Public Involvement Process

Concept Planning: 2009 – 2011

Preliminary Design:

Stage 1 – Pre-Consultation – February 2012

Stage 2 – Initiation – March – May 2012

Stage 3 – Consultation – May – November 2012

Stage 4 – Refinement – September 2012 – June 2013

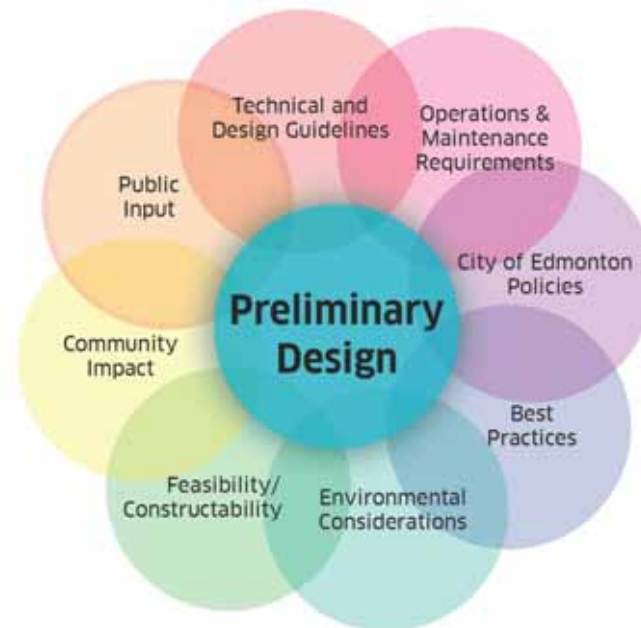
Stage 5 – Conclusion – January – December 2013



**WE ARE HERE**

# How Your Input is Used

- Public input:
  - Is valuable
  - Informs Preliminary Design along with other information
  - Has been incorporated into the materials presented tonight





# What We Heard – Stage 3

## WHAT WE HEARD

- Confirmation of stop themes
- Preference for signature or contemporary river bridge—less visual impact
- Preference for organic shaped shelter canopy
- Value for pedestrian realm and LRT access
- Access to businesses and residences a priority
- Bicycle parking is priority

## WHAT WE HAVE DONE

- Stop themes presented tonight
- Feedback along with technical and cost used to create shortlist of 3 for City Council decisions
- Organic shelter canopy will be used
- Pedestrian access is priority—new and retained crossings on corridor plans
- New, retained and relocated accesses on corridor plans
- Bicycle parking located at all stops/stations

# Stage 4 - What We Need From You

- Your feedback on the preferred preliminary design presented tonight
- Where possible, input will be incorporated into the recommended preliminary design that will be presented to you at Stage 5
  - SE to Downtown - February 2013
  - Downtown to West – Fall 2013

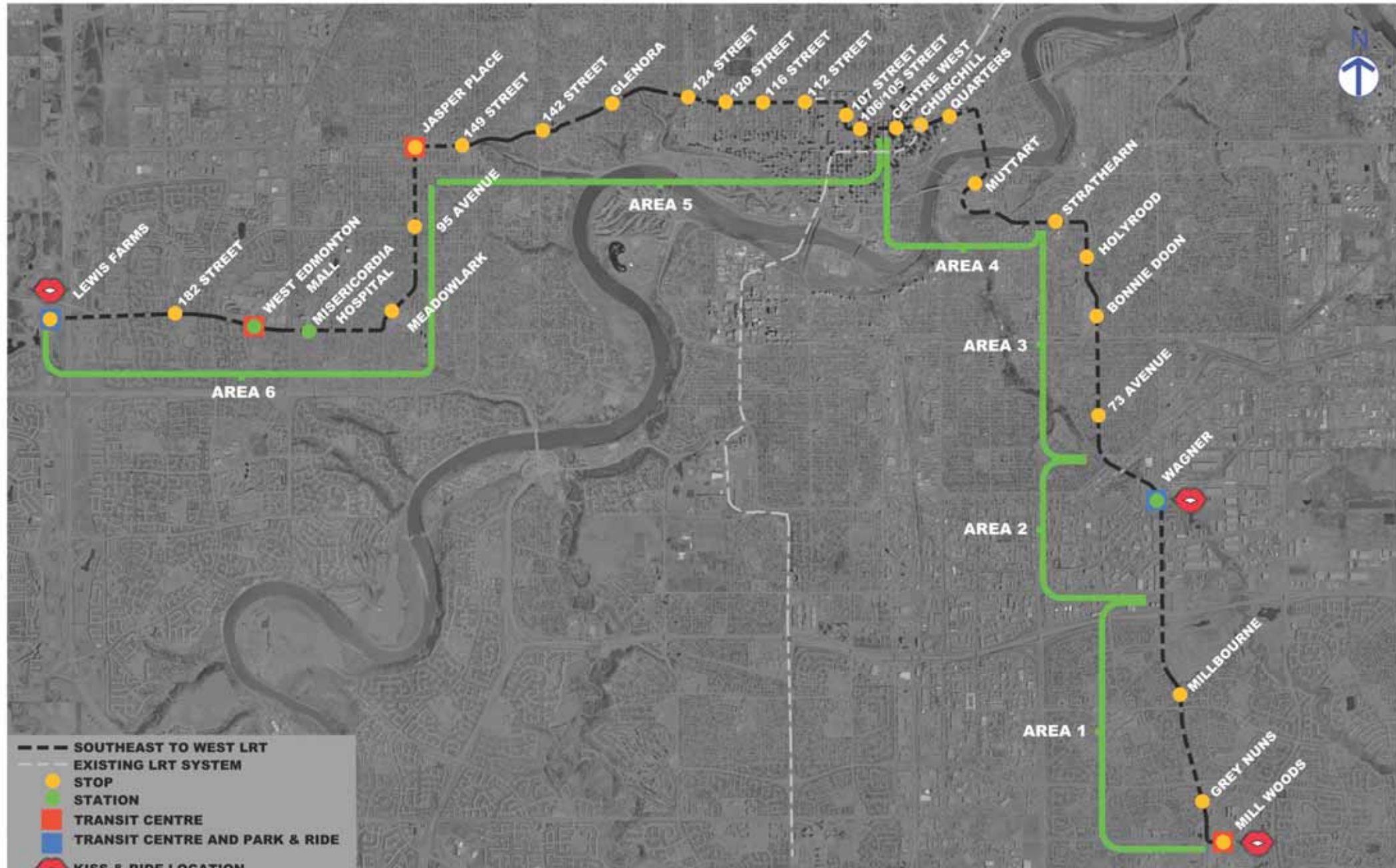


**SE TO WEST LRT**

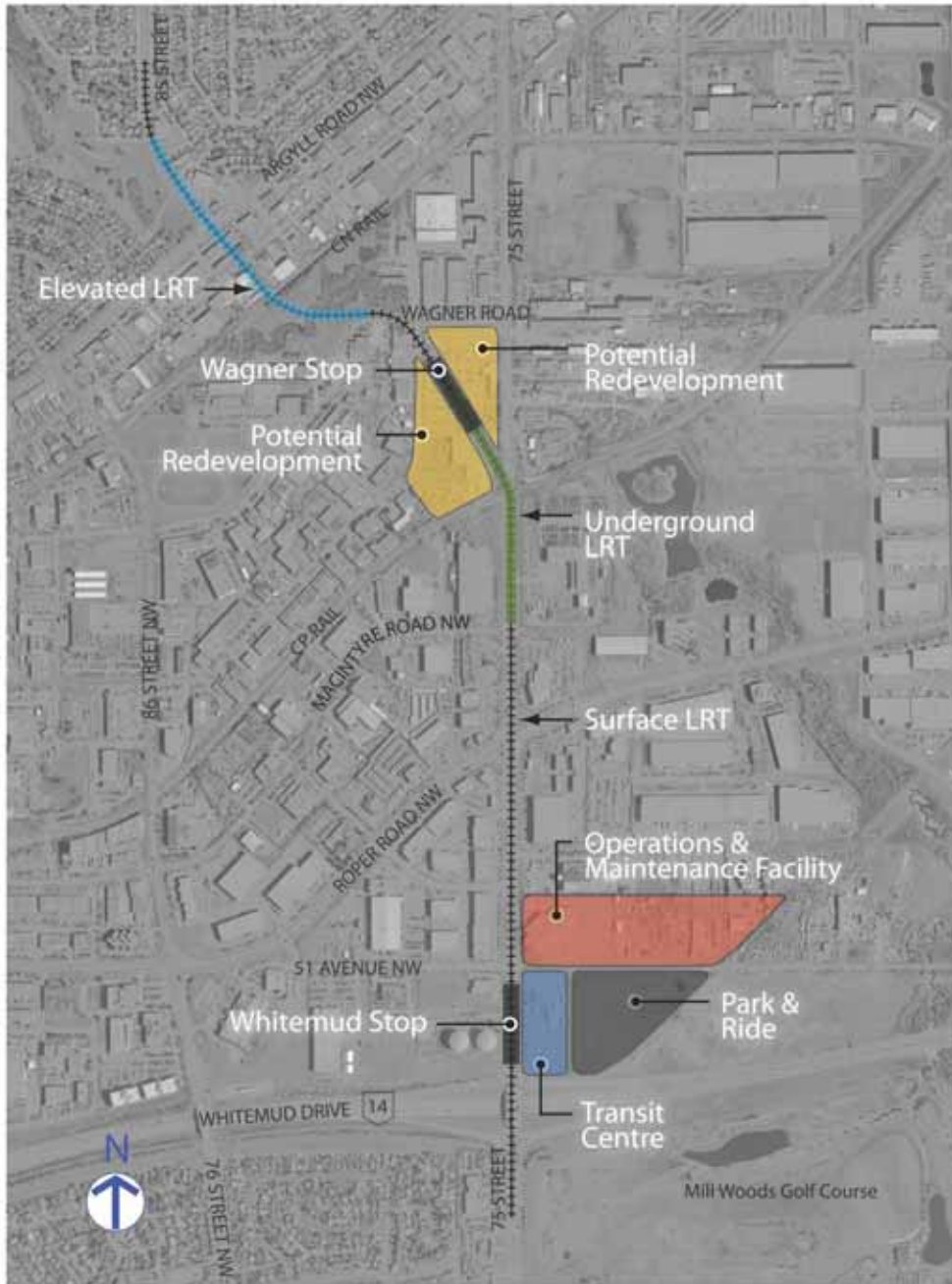
# SE to West LRT Facts

- 27 km route – Mill Woods to Lewis Farms
  - 3 stations and 25 stops
  - Integrated with 5 transit centres
  - 2 Park and Ride sites (Wagner, Lewis Farms)
  - Kiss ‘N’ Ride drop-off sites
- Vertical connection to existing LRT at Churchill Station
- Low floor technology – curb access, less infrastructure,
- “Edmonton” urban style
- Trains run on approximately 5 minute intervals
- Trains share traffic signals but not right-of-way

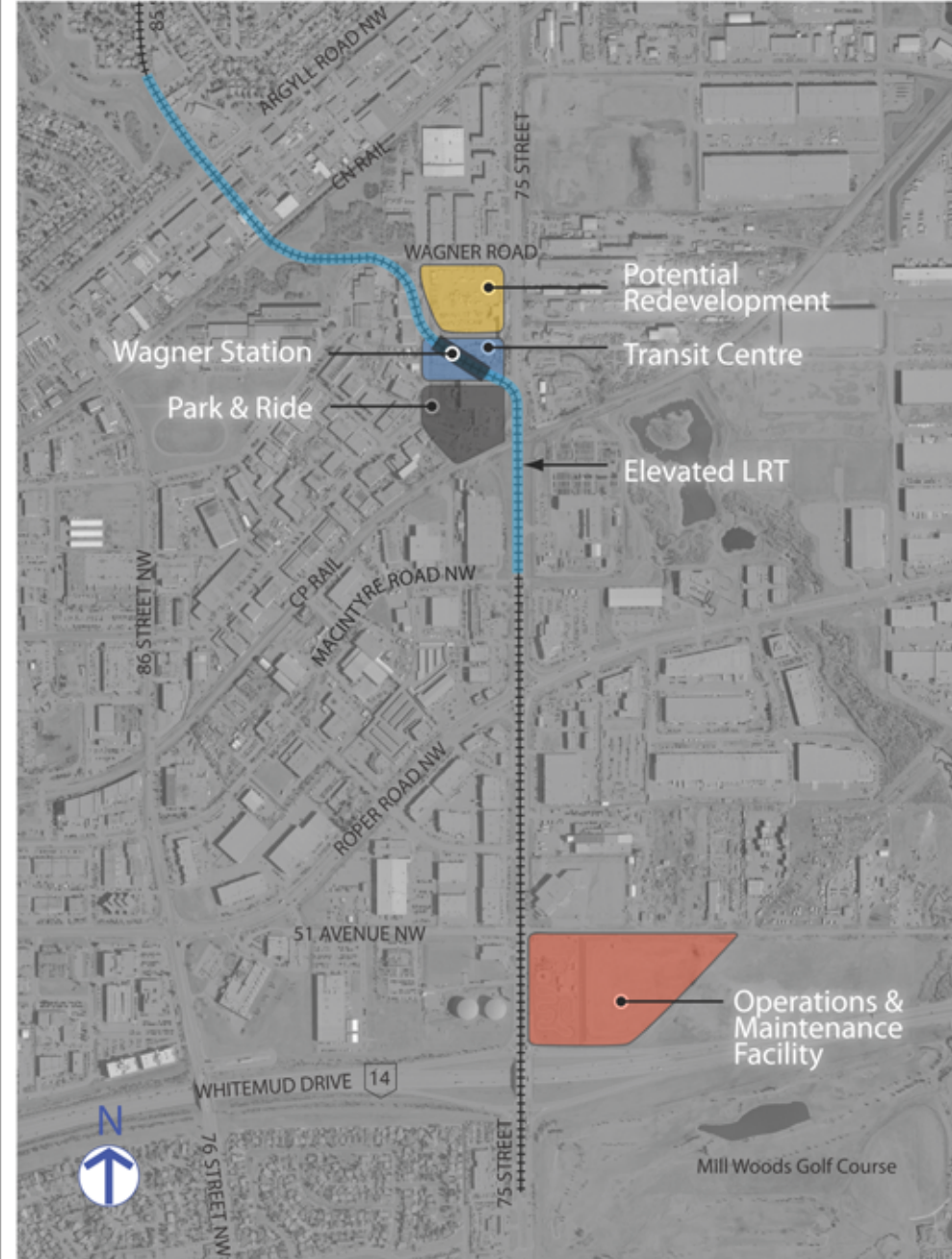
# Approved Corridor



# Original Concept Plan (2011)



# Approved Amendment to Concept Plan (July 2012)





# **PRELIMINARY DESIGN OVERVIEW – AREAS 1 AND 2**

# Basic Principles

- Stops/stations
  - Integration into neighbourhood
  - Good connections with bus network
  - Kiss 'N' Ride where possible
  - Bicycle parking at each stop/station
  - Infrastructure size based on ridership projections
- Community and business accesses are priority
- Vehicle
- Pedestrian
- Bicycle
- Keep it green



- Traction Power Sub Stations
  - Locations
  - Impacts
- Travel time
- Property acquisition
  - As per concept plan
  - Additional
- Vehicle selection
- Track types

# Ongoing/Update (continued)

- Gates, lights and bells
- Noise/vibration studies
- Budget and Timeline

# 73 Avenue Stop



# 73 Avenue Theme



*“Natural - to reflect Mill Creek ravine that runs the length of this area”*

*“Small town atmosphere”*

Elements below reflect  
**What We Heard from Stage 3**



ELEMENTS  
SIMILAR  
TO THESE:



#### BENCHES

- wood seats and backs
- clean simple lines
- curved



#### GARBAGE BINS

- recycle
- clean simple lines
- wood



#### RETAINING WALLS

- nice clean look
- segmented
- natural looking



#### PAVING

- natural stone appearance



#### COLUMN WRAPS

- simple lines
- either stone or wood appearance



#### RAILING

- simple lines
- highly permeable visually

# Bonnie Doon Stop



# Bonnie Doon Theme



*"French theme around Bonnie Doon mall"*

*"Bonnie Doon - lots of history"*

Elements below reflect  
What We Heard from Stage 3



ELEMENTS  
SIMILAR  
TO THESE:



**BENCHES**  
• clean contemporary lines with historic flair



**GARBAGE BINS**  
• match benches



**RETAINING WALLS**  
• nice clean look  
• segmented  
• natural looking



**PAVING**  
• cobblestone appearance



**COLUMN WRAPS**  
• brick with cap



**RAILING**  
• simple lines  
• visually permeable

# Holyrood Stop



# Holyrood Theme



*"Natural environment as a theme - use natural colours and materials - no bright colours or shiny gold"*



Elements below reflect  
What We Heard from Stage 3

ELEMENTS SIMILAR TO THESE:



**BENCHES**  
• clean simple lines with wood seats and backs



**GARBAGE BINS**  
• clean lines



**RETAINING WALLS**  
• keep natural in appearance



**PAVING**  
• linear pattern, possible exposed aggregate



**COLUMN WRAPS**  
• wood appearance  
• clean simple lines



**RAILING**  
• simple contemporary lines



# Strathearn Stop



# Strathearn Theme



*“Historic – neighbourhood is over 100 years old – integrate LRT with the mature look of it”*

*“Heritage theme for Strathearn stop”*

Elements below reflect  
**What We Heard from Stage 3**



ELEMENTS  
SIMILAR  
TO THESE:



- BENCHES**
- clean contemporary lines with historic flair



- GARBAGE BINS**
- match benches



- RETAINING WALLS**
- natural stone look



- PAVING**
- patterned paving stone (appearance)
  - not grey



- COLUMN WRAPS**
- brick
  - historic feel



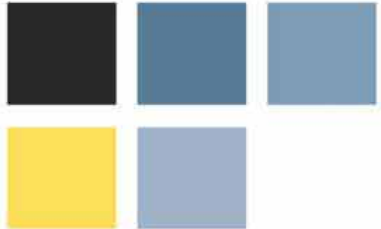
- RAILING**
- simple lines
  - visually permeable

# Wagner Station



Aerial view looking South

# Wagner Theme



Elements below reflect  
What We Heard from Stage 3



ELEMENTS  
SIMILAR  
TO THESE:



BENCHES



GARBAGE BINS



RETAINING WALLS



PAVING



COLUMN WRAPS



RAILING

# Preferred Stop Canopy – Organic

- Steel Structure
- Metal and wood canopy
- Glass shelters
- Unique concrete finishing



# Access and Corridor



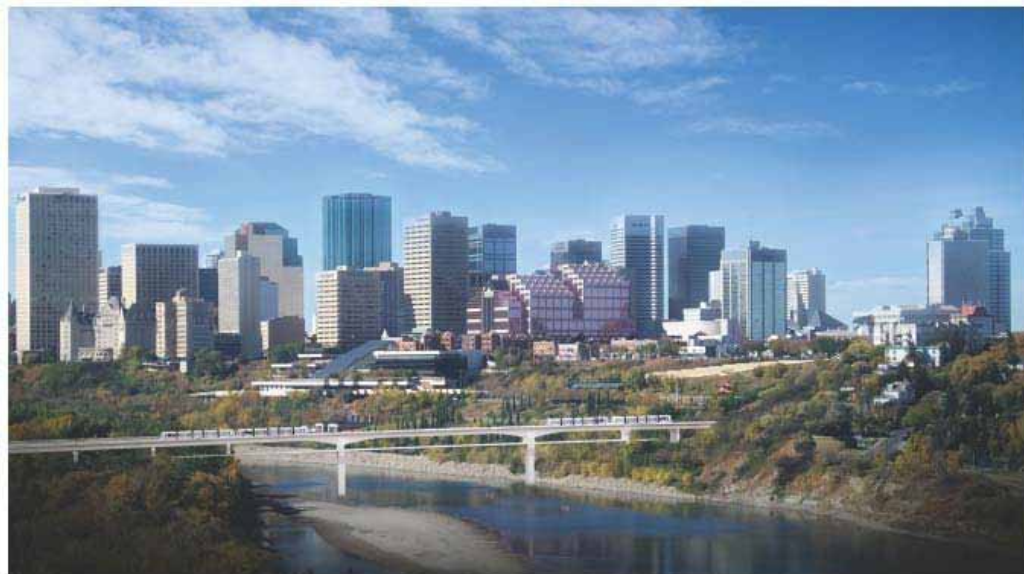
# North Saskatchewan River Bridge



*Option 1 - Cable stayed bridge looking Northwest*



*Option 2 - Extradosed bridge looking Northwest*



*Option 3 - Variable box girder bridge looking Northwest*



# **NEXT STEPS**



# Next Steps – SE to Downtown

- Incorporate any final comments into Preliminary Design
- Complete Preliminary Design
- Present recommended preliminary design to you – February 2013



[www.lrtprojects.ca](http://www.lrtprojects.ca)



# QUESTIONS