

Preliminary Design for Edmonton's Southeast to West Light Rail Transit

September 19, 2012 - Area 1 - Mill Woods Town Centre to Whitemud
Area 2 - Whitemud to Argyll



Tonight's Agenda

- Meeting Purpose
- Public Involvement
- SE to West LRT Overview
- Preliminary Design—Areas 1 and 2
- Next Steps
- Question and Answer





MEETING PURPOSE



Meeting Purpose

- To build upon input received from Stage 3 Public Involvement
- To present preferred preliminary design for Areas 1 and 2 and other key components of route
- To present rationale for recommendations
- To receive feedback to help confirm the preferred preliminary design
- To respond to questions

Project Schedule

Where were we?

Conceptual Design:	2009 - 2011 (Completed)
City Council Approval of Concept Plan:	2011 - 2012 (Completed)



Where are we going?

Public Involvement and Communication:	2011 - 2013 (In Progress)
Preliminary Design:	Completed in Fall 2013
Detailed Design and Construction:	In Future



PUBLIC INVOLVEMENT

Public Involvement Process


Concept Planning: 2009 – 2011

Preliminary Design:

Stage 1 – Pre-Consultation – February 2012

Stage 2 – Initiation – March – May 2012

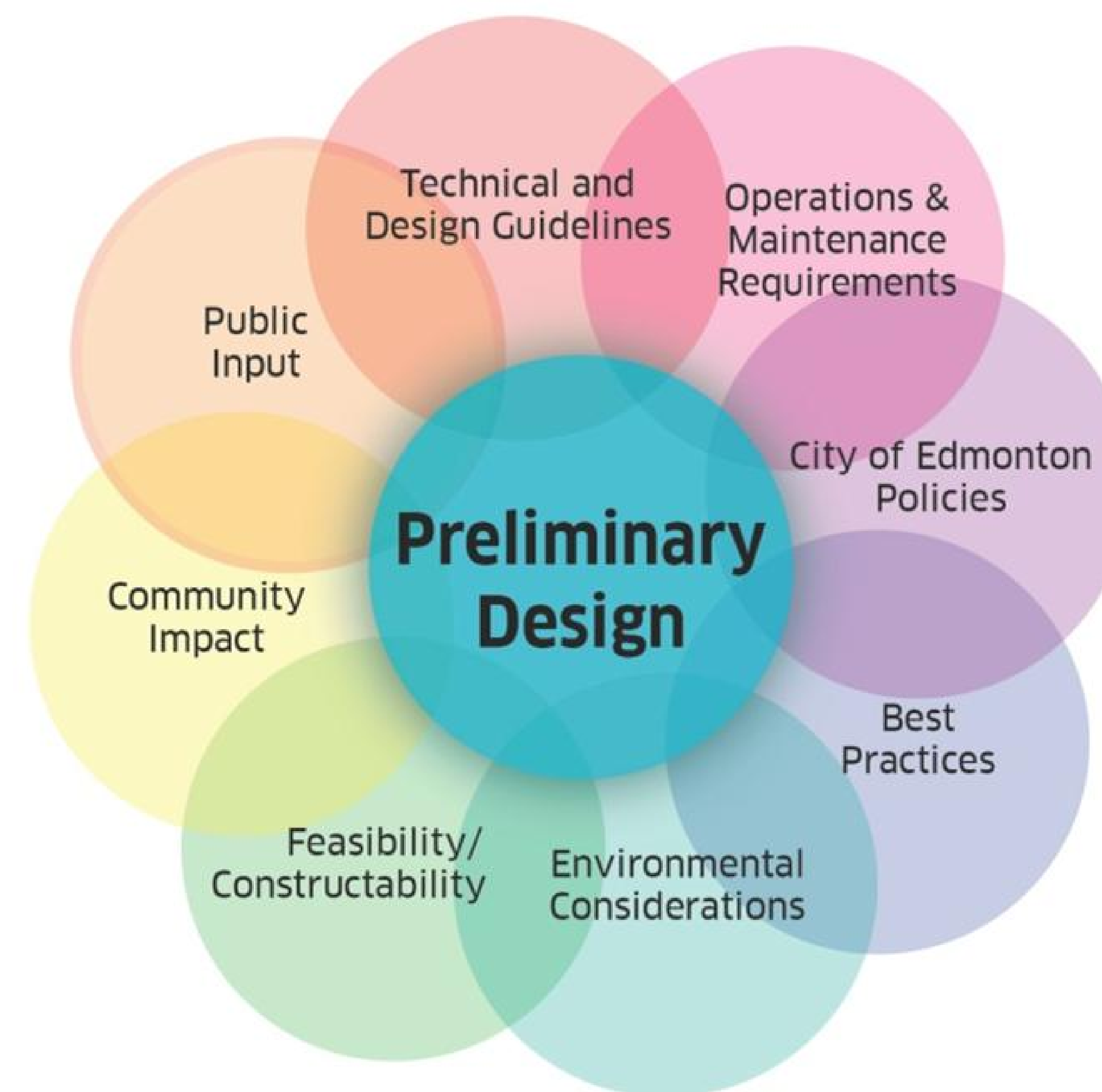
Stage 3 – Consultation – May – November 2012

Stage 4 – Refinement – September 2012 – June 2013  WE ARE HERE

Stage 5 – Conclusion – January – December 2013

How Your Input is Used

- Public input:
 - Is valuable
 - Informs Preliminary Design along with other information
 - Has been incorporated into the materials presented tonight



What We Heard – Stage 3

- Confirmation of stop themes (exception Millbourne)
- Preference for signature or contemporary river bridge—less visual impact
- Preference for organic shaped shelter canopy
- Value for pedestrian realm and LRT access
- Access to businesses and residences a priority
- Bicycle parking is priority
- Stop themes presented tonight
- Modified Millbourne from “Asian” to “Park”
- Feedback along with technical and cost used to create shortlist of 3 for City Council decisions
- Organic shelter canopy will be used
- Pedestrian access is priority—new and retained crossings on corridor plans
- New, retained and relocated accesses on corridor plans
- Bicycle parking located at all stops/stations

Stage 4 - What We Need From You

- Your feedback on the preferred preliminary design presented tonight
- Where possible, input will be incorporated into the recommended preliminary design that will be presented to you at Stage 5
 - SE to Downtown - February 2013
 - Downtown to West – Fall 2013



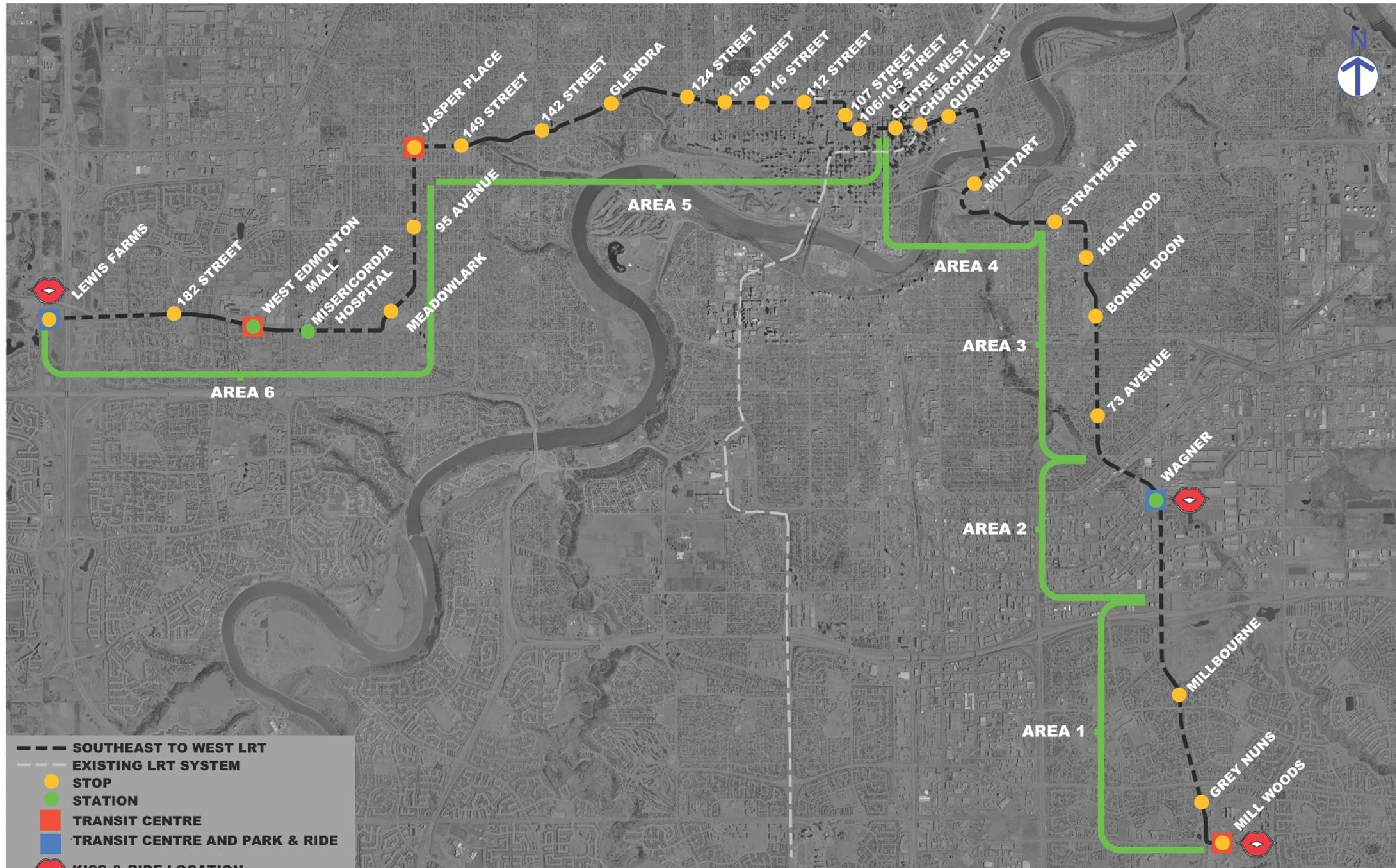
SE TO WEST LRT



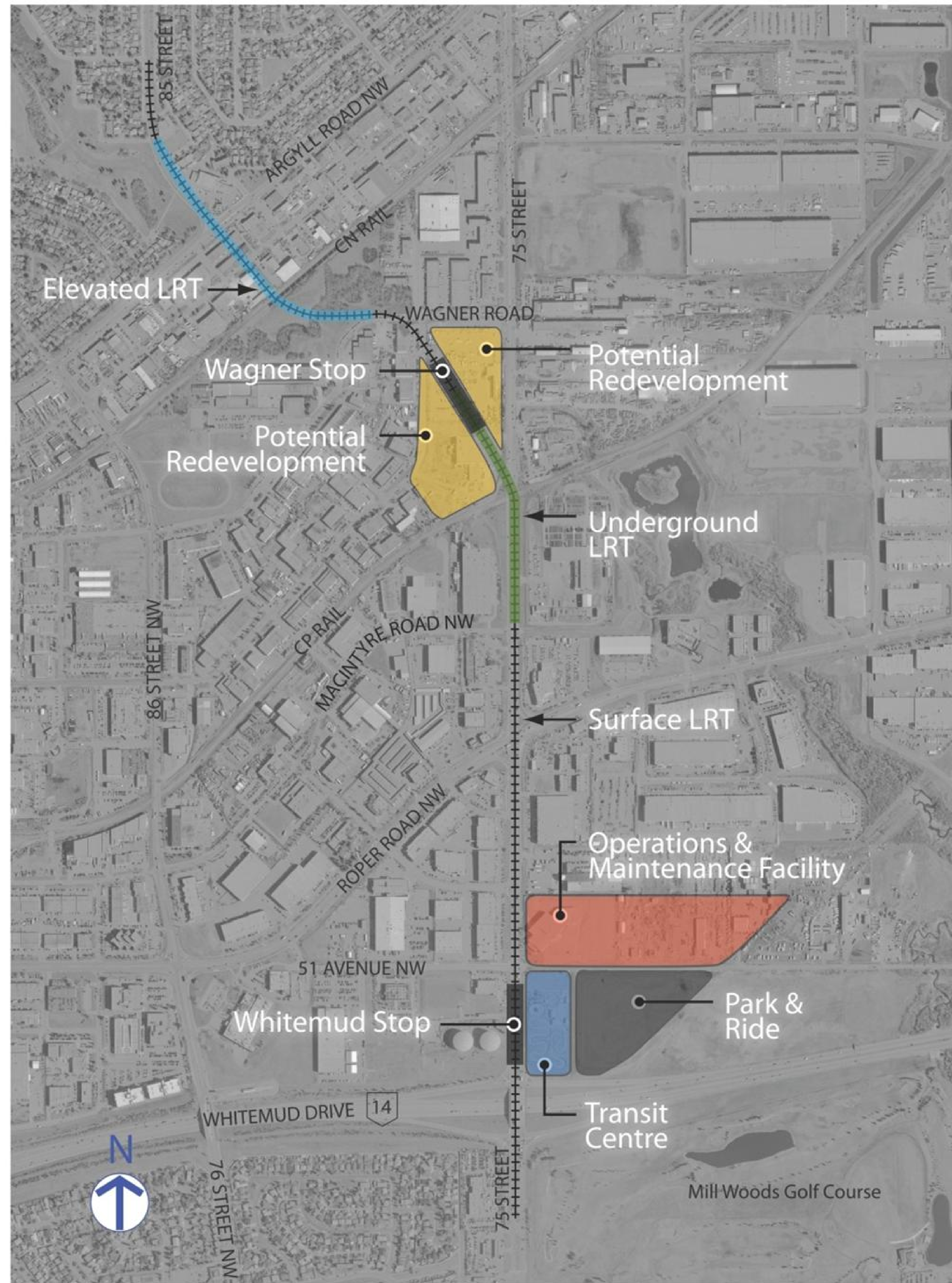
SE to West LRT Facts

- 27 km route – Mill Woods to Lewis Farms
 - 3 stations and 25 stops
 - Integrated with 5 transit centres
 - 2 Park and Ride sites (Wagner, Lewis Farms)
 - Kiss 'N' Ride drop-off sites
- Vertical connection to existing LRT at Churchill Station
- Low floor technology – curb access, less infrastructure,
- “Edmonton” urban style
- Trains run on approximately 5 minute intervals
- Trains share traffic signals but not right-of-way

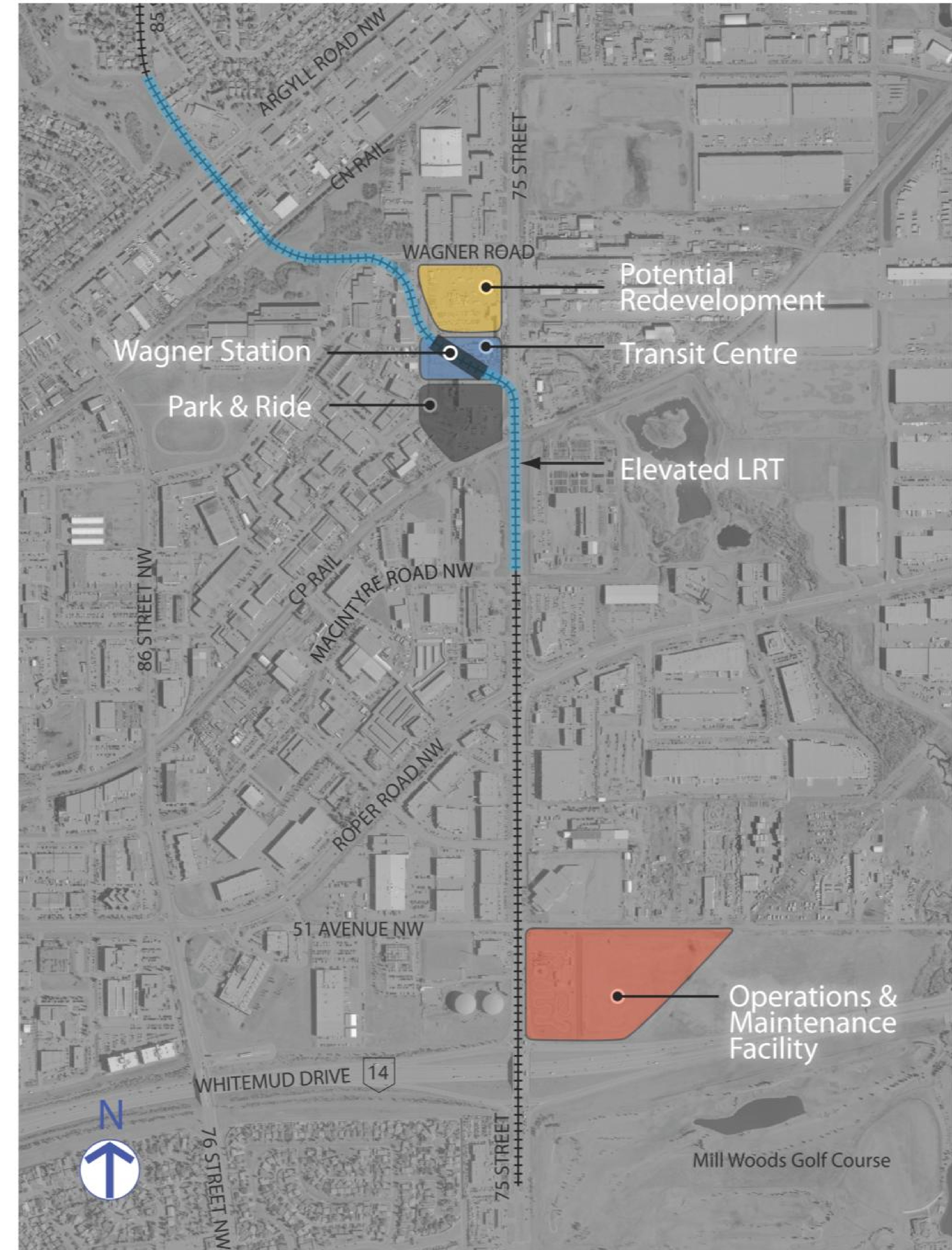
Approved Corridor



Original Concept Plan (2011)



Approved Amendment to Concept Plan (July 2012)





PRELIMINARY DESIGN OVERVIEW – AREAS 1 AND 2



Basic Principles

- Stops/stations
 - Integration into neighbourhood
 - Good connections with bus network
 - Kiss 'N' Ride where possible
 - Bicycle parking at each stop/station
 - Infrastructure size based on ridership projections
- Community and business accesses are priority
 - Vehicle
 - Pedestrian
 - Bicycle
- Keep it green

- Traction Power Sub Stations
 - Locations
 - Impacts
- Travel time
- Property acquisition
 - As per concept plan
 - Additional
- Vehicle selection
- Track types

Ongoing/Update (continued)

- Gates, lights and bells
- Noise/vibration studies
- Budget and Timeline

Mill Woods Stop



Mill Woods Stop Site Plan

Mill Woods Theme



“Trees go with the name Mill Woods – big and small trees and lots of them.”

“Simple, minimalist theme – contemporary.”

Elements below reflect
What We Heard from Stage 3



ELEMENTS
SIMILAR
TO THESE:



- BENCHES**
- wood seats and backs
 - simple lines



- GARBAGE BINS**
- recycling
 - simple lines



- RETAINING WALLS**
- natural



- PAVING**
- natural stone appearance



- COLUMN WRAPS**
- simple lines
 - wood appearance



- RAILING**
- simple lines

Grey Nuns Stop



Grey Nuns Theme



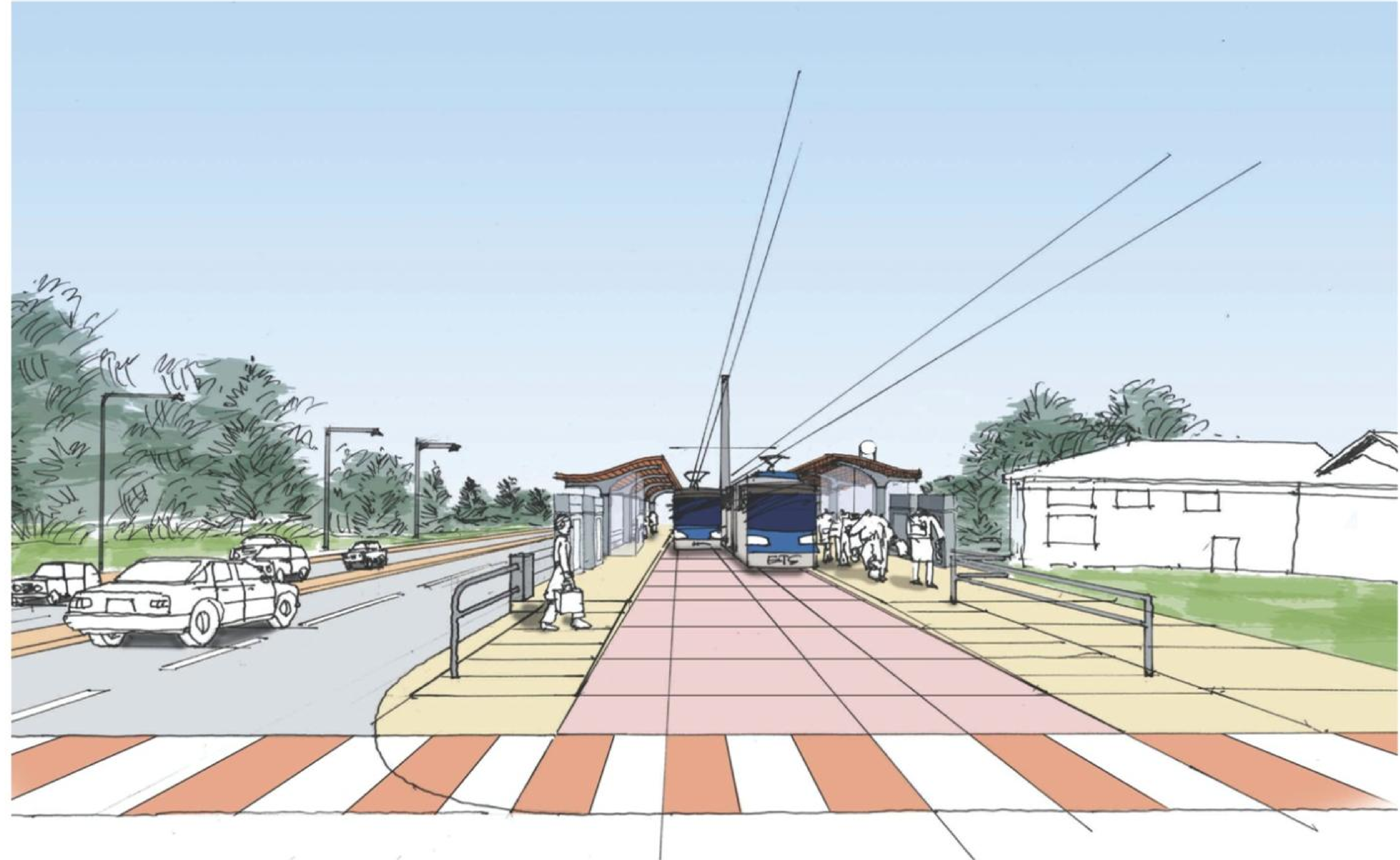
Marguerite d'Youville - Sister of Charity (Grey Nuns)

“Statue of a nun.”

“Colours could be used to designate locations – colour themes in each station.”

“Sign of H to indicate hospital station.”

Elements below reflect
What We Heard from Stage 3



ELEMENTS
SIMILAR
TO THESE:



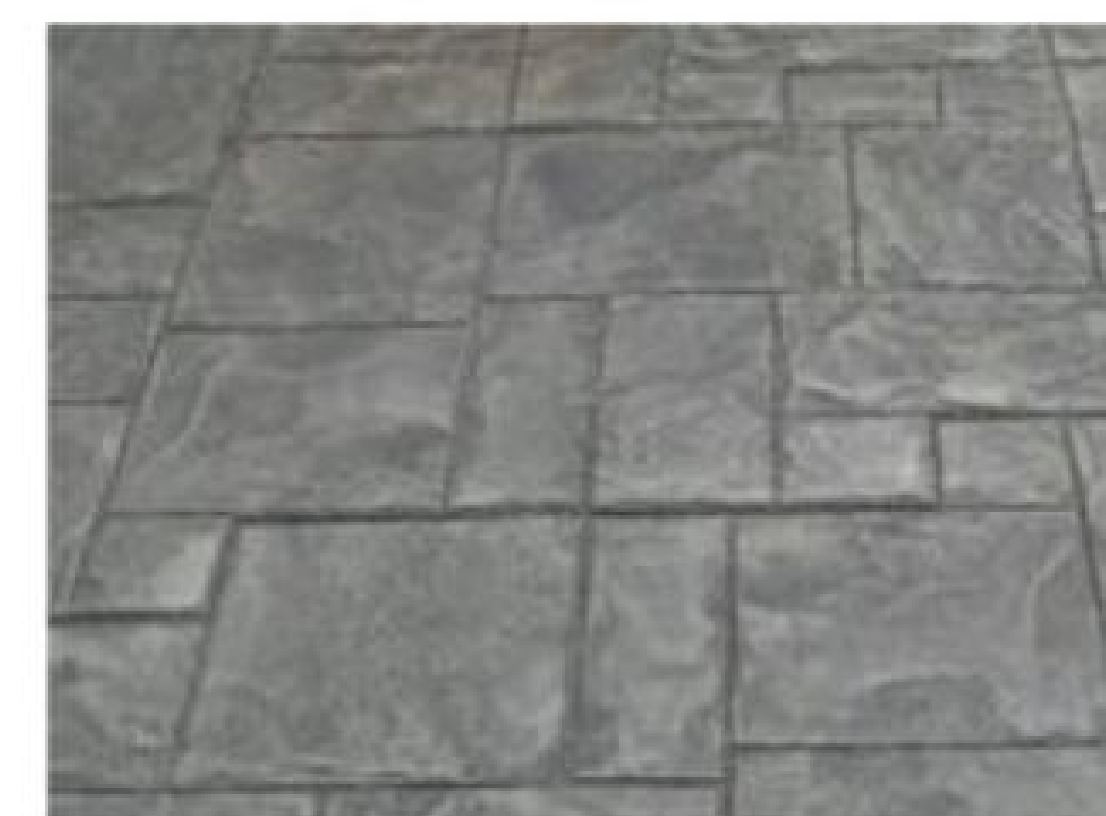
- BENCHES**
- wood seats and backs
 - simple lines



- GARBAGE BINS**
- covered
 - simple lines
 - wood



- RETAINING WALLS**
- rustic
 - natural looking



- PAVING**
- natural slate like appearance



- COLUMN WRAPS**
- simple
 - brick and stone



- RAILING**
- simple lines

Millbourne Stop



Millbourne Theme



“Lots of trees – forest, park.”

Elements below reflect
What We Heard from Stage 3



ELEMENTS
SIMILAR
TO THESE:



- BENCHES**
- wood seats and backs
 - simple lines



- GARBAGE BINS**
- recycling
 - simple lines



- RETAINING WALLS**
- natural
 - segmented



- PAVING**
- rustic paving stone appearance



- COLUMN WRAPS**
- stone



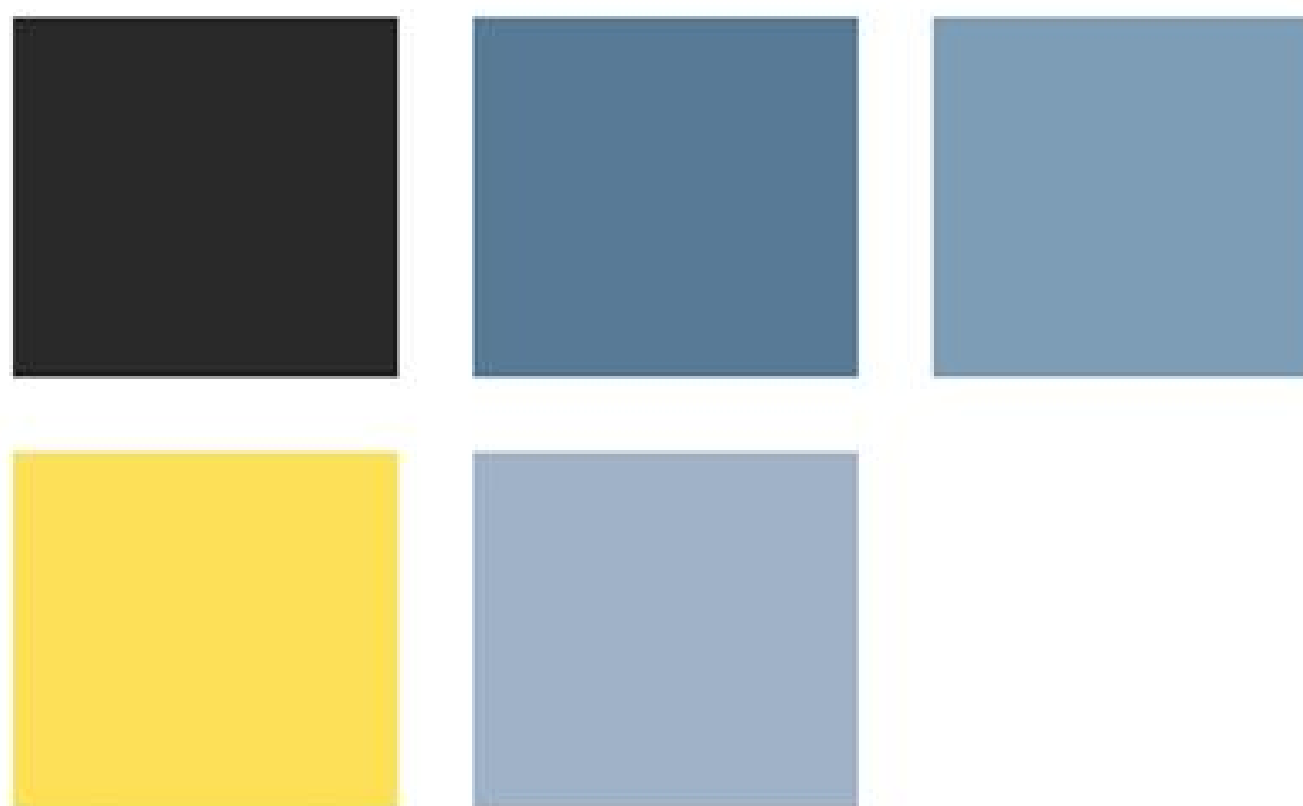
- RAILING**
- simple lines

Wagner Station



Aerial view looking South

Wagner Theme



Elements below reflect
What We Heard from Stage 3



ELEMENTS
SIMILAR
TO THESE:



BENCHES



GARBAGE BINS



RETAINING WALLS



PAVING



COLUMN WRAPS



RAILING

Preferred Stop Canopy – Organic

- Steel Structure
- Metal and wood canopy
- Glass shelters
- Unique concrete finishing



Access and Corridor



North Saskatchewan River Bridge



Option 1 - Cable stayed bridge looking Northwest



Option 3 - Variable box girder bridge looking Northwest



Option 2 - Extradosed bridge looking Northwest



NEXT STEPS

Next Steps – SE to Downtown

- Incorporate any final comments into Preliminary Design
- Complete Preliminary Design
- Present recommended preliminary design to you – February 2013



www.lrtprojects.ca



QUESTIONS