

Jasper Avenue - 110 Street to 109 Street • Looking West



Open planting bed with street trees and ornamental planting creates a landscaped gateway to the Oliver neighborhood. Seating alcoves provide opportunity for gathering.

Replace plant material in existing planters.

High contrast paving through furnishing zone to improve wayfinding for the visually impaired.

3.0m (10') Wide concrete walk (pedestrian through zone).

GATEWAY BLOCK



EXISTING CONDITIONS

Jasper Avenue - 113 Street to 112 Street • Looking West



Tactile pavers at each curb ramp to improve safety for the visually impaired.

Street trees in planting beds. Ornamental planting provides additional colour to street and interest for waiting transit riders. Benches provided for additional seating at bus stop.

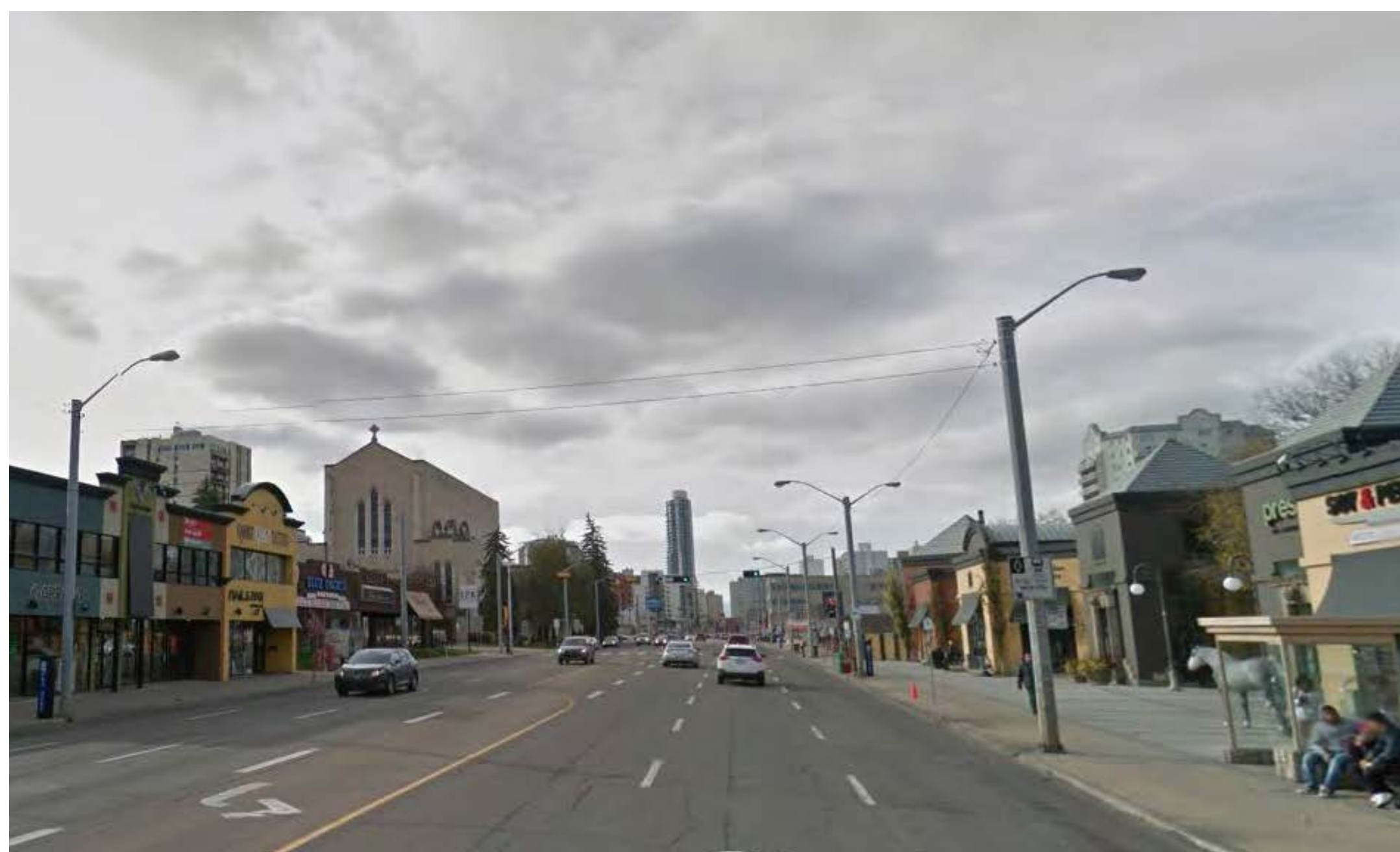
Transit Zone with Shelter.

3.0m (10') Wide concrete walk (pedestrian through zone).

Space provided at corner bulbs for queuing pedestrians, traffic signal poles, and furnishings such as litter receptacles and bike racks.

High contrast paving to improve wayfinding for the visually impaired.

TYPICAL TRANSIT ZONE



EXISTING CONDITIONS

Jasper Avenue - 113 Street to 112 Street • Looking East



FURNISHING ZONE

- Trees in grates to provide additional circulation space
- Location for furnishings and street elements such as light poles, parking pay stations, bike racks, benches, litter receptacles, signage, etc.

Flex Space provides opportunities for patios spaces, parklet installations and parking.

3.0m (10') Wide concrete walk (pedestrian through zone).

FLEX SPACE CONCEPT • SHOWING POTENTIAL PARKLET AND PARKING



EXISTING CONDITIONS

Jasper Avenue - 113 Street to 114 Street • Looking West



Tactile pavers at each curb ramp to improve safety for the visually impaired.

Raised planters for year-round display opportunities and to protect pedestrians from vehicle traffic.

Brightly coloured frames to shape gathering spaces, provide shade, lighting opportunities, year-round colour and vibrancy.

3.0m (10') Wide concrete walk (pedestrian through zone).

Space provided at corner bulbs for queuing pedestrians, traffic signal poles, and furnishings such as litter receptacles and bike racks.

High contrast paving to improve wayfinding for the visually impaired.

TYPICAL COLOURED FRAMES (WINTER TIME)



EXISTING CONDITIONS

Jasper Avenue - 123 Street to 122 Street • Looking West



Tactile pavers at each curb ramp to improve safety for the visually impaired.

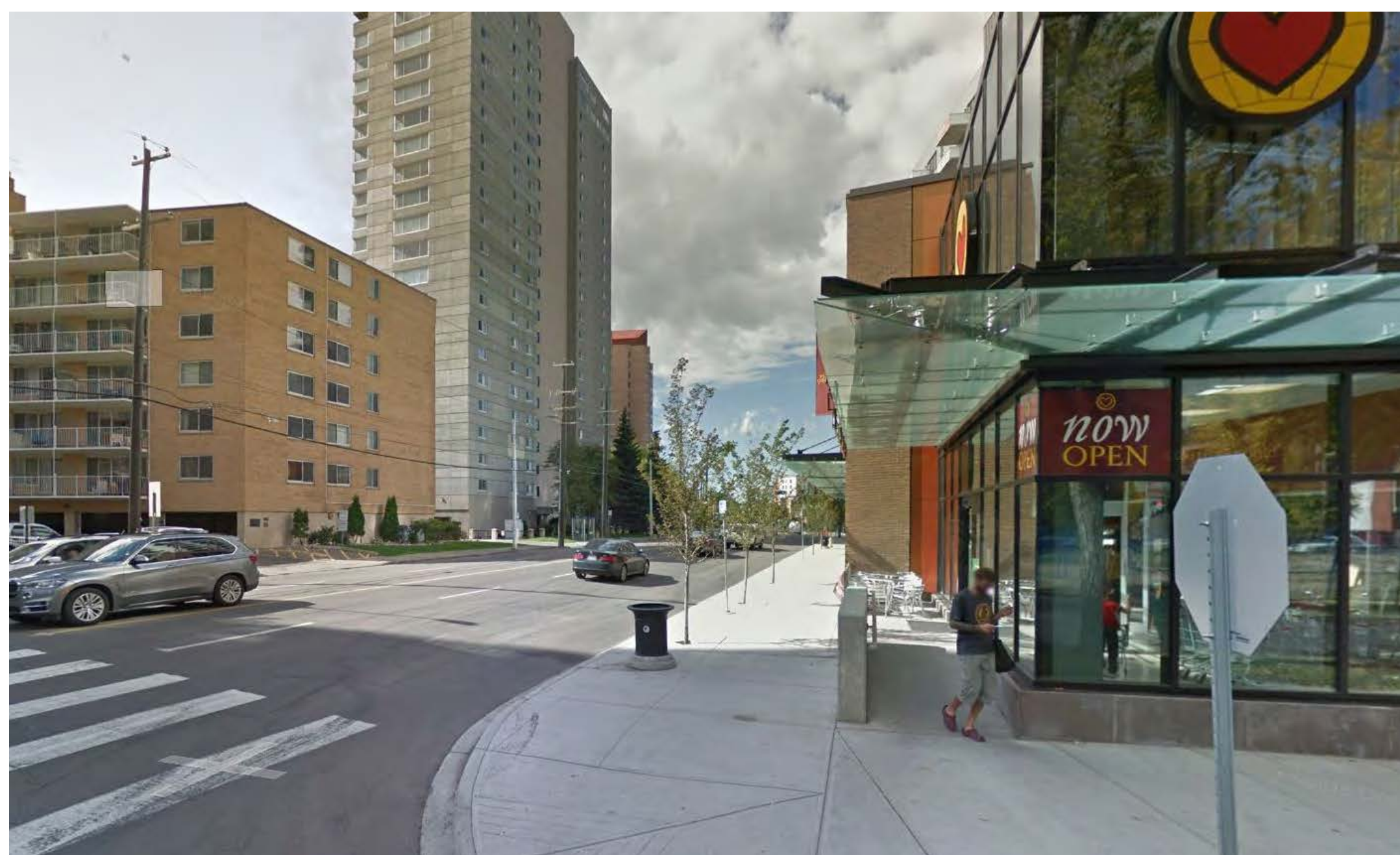
PLANTING BED WITH TREE STAND AND SEATING WALL

- Configuration of seating creates distinctive gathering spaces of different sizes.
- Dense planting provides buffer from traffic.

3.0m (10') Wide concrete walk (pedestrian through zone).

High contrast paving through furnishing zone and at intersections to improve wayfinding for the visually impaired.

NEIGHBOURHOOD RESIDENTIAL BLOCK



EXISTING CONDITIONS