

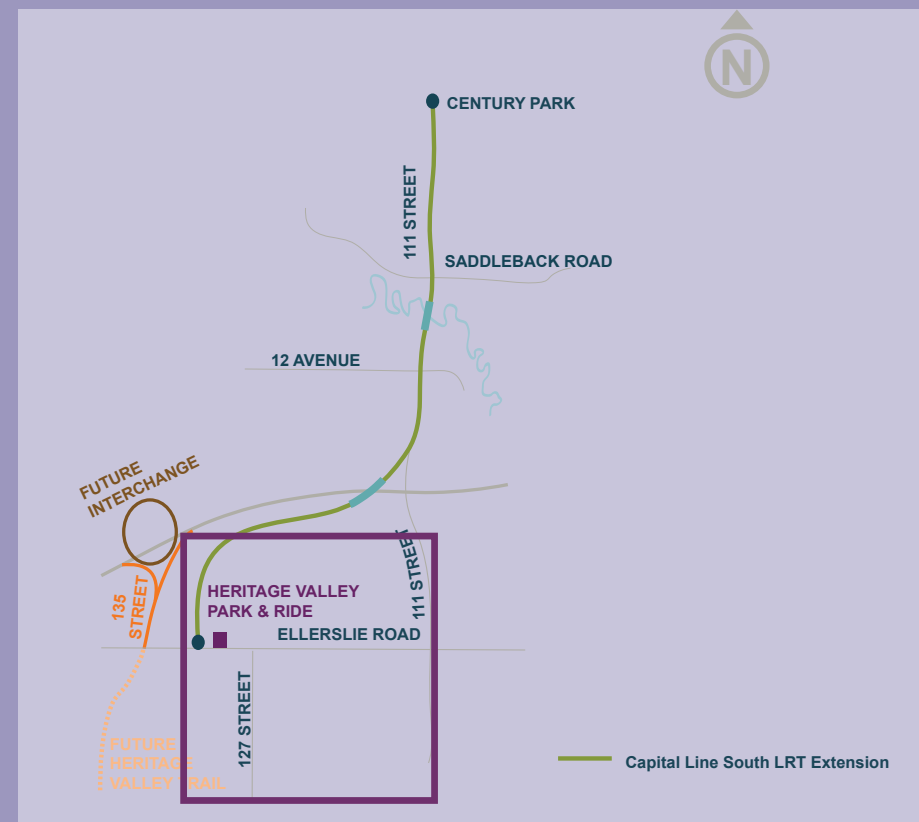
# Heritage Valley Park and Ride

## What:

The City will construct a Park and Ride and Transit Centre at the northwest corner of Ellerslie Road and 127 Street.

## When:

Anticipated Construction: 2018-2019



# Background

Southwest Edmonton will be home to a Park and Ride at the northwest corner of Ellerslie Road and 127 Street. The new integrated transit facility will include a future LRT station on the Capital Line South LRT Extension, a transit centre, and the Park and Ride.

In July 2008, City Council approved the Concept Plan for the Capital Line South LRT Extension from Century Park to the south city limit (41 Avenue SW). The Concept Plan defined the alignment (where the track fits in the roadway) and station locations, including a station north of Ellerslie Road.

The site for a permanent Park and Ride was recommended as part of the preliminary design of the Capital Line South LRT Extension and was approved by City Council in April 2009.

In the fall of 2016, the Heritage Valley Park and Ride was approved by the federal government as eligible for Public Transit Infrastructure Funding (PTIF).



# The Project


The Heritage Valley Park and Ride has an ultimate capacity of approximately 1,900 parking stalls. The site has been designed to simplify transit to transit connections, while accommodating cycle and pedestrian links into adjacent neighbourhoods. Land has also been reserved to the west of the future LRT tracks to accommodate potential Transit Oriented Development (TOD).

Detailed design of the Park and Ride is nearly complete. Construction of Phase 1 is anticipated to begin in 2018 (subject to land acquisition) and will be staged over two years (2018-2019).

Phase 1 construction will include:

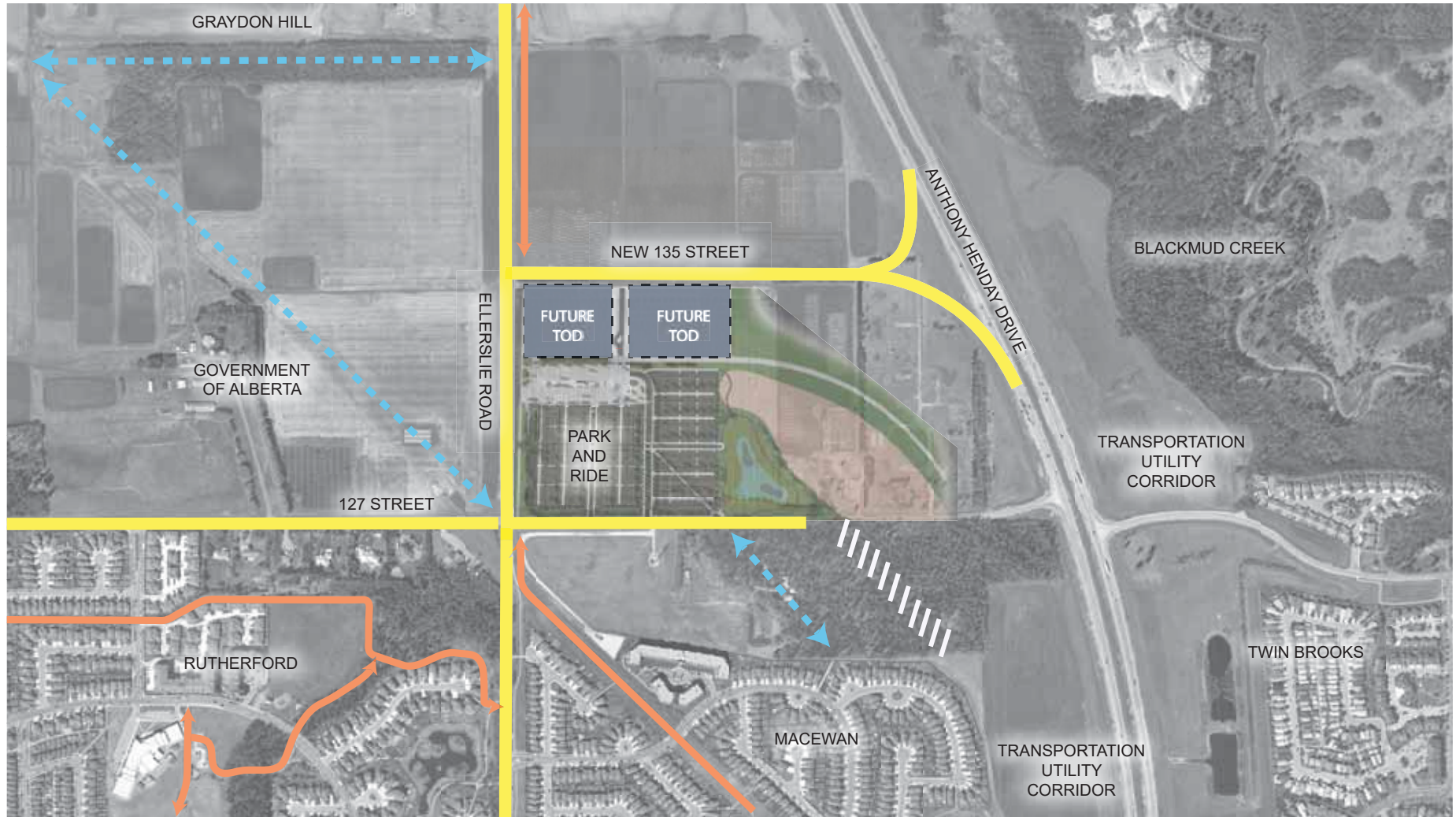
- A 20-bay transit centre, with a heated building and several unheated, sheltered waiting areas
- Up to 1,100 parking stalls
- Two Kiss and Ride locations
- Reconstruction of a portion of 127 Street, for access to and from the Park and Ride
- A Stormwater Management Facility (storm pond) north of the Park and Ride lot





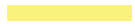

HERITAGE VALLEY PARK AND RIDE  
OVERALL SITE PLAN  
NTS 

Phase 1 of the Heritage Valley Park and Ride has been designed to accommodate future expansion (to the ultimate capacity of 1,900 stalls) as well as the addition of LRT. Such an expansion may also include enhanced landscaping features and additional pedestrian/cycle connections into adjacent neighbourhoods, and will be based on service demands and funding availability.

# Project Area



**LEGEND**

-  EXISTING TRAIL CONNECTIONS
-  PROPOSED FUTURE TRAIL CONNECTIONS
-  ARTERIAL ROADS
-  TREE CLEARING





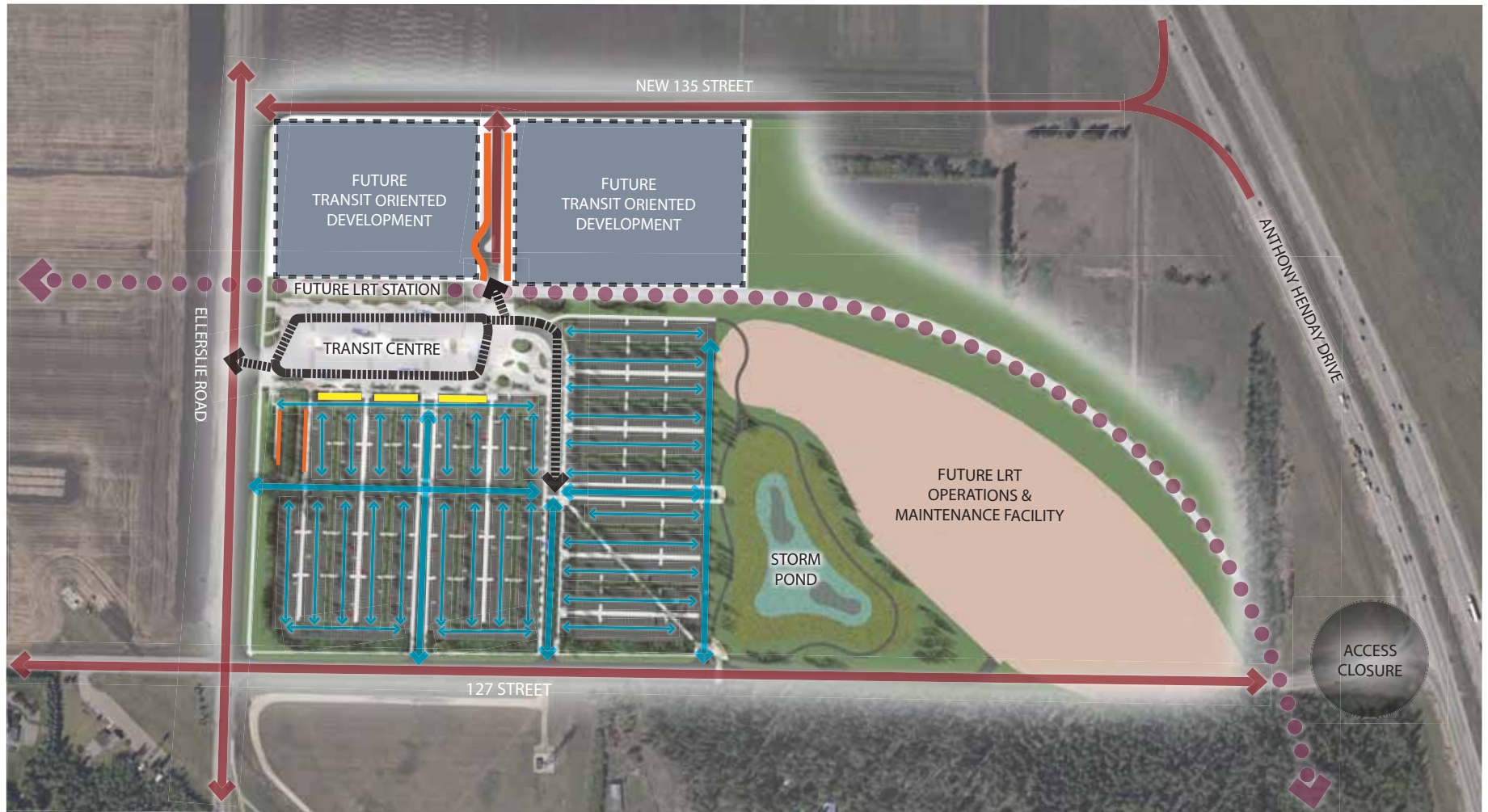
# Phase 1



## LEGEND

- |  |                                 |  |                                       |
|--|---------------------------------|--|---------------------------------------|
|  | SHARED USE PATHWAY              |  | TRANSIT CENTRE PEDESTRIAN CONNECTIONS |
|  | EXTERIOR SITE SIDEWALKS         |  | BIKE PARKING                          |
|  | PARK & RIDE PEDESTRIAN NETWORKS |  | FUTURE SHARED USE PATHWAY             |

# Vehicle Circulation



LEGEND

-  ARTERIAL OR COLLECTOR ROADWAY
-  ONSITE SECONDARY CIRCULATION
-  KISS AND RIDE
-  BARRIER FREE PARKING
-  BUS ACCESS ONLY
-  FUTURE LRT





# Ultimate Site Plan



## LEGEND

- SHARED USE PATHWAY
- EXTERIOR SITE SIDEWALKS
- PARK & RIDE PEDESTRIAN NETWORKS
- TRANSIT CENTRE PEDESTRIAN CONNECTIONS
- BIKE PARKING

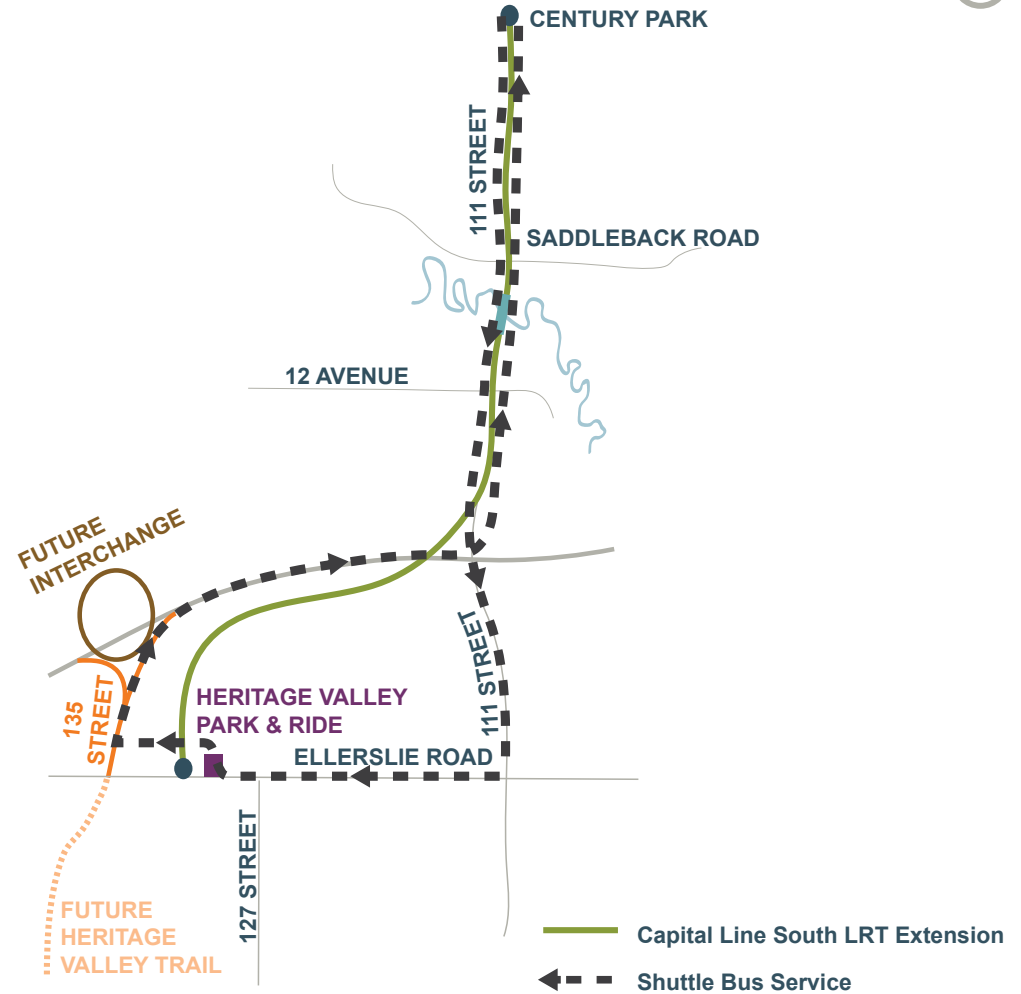
# Shuttle Bus Service

The Transit Centre will have 20 bus bays, providing transit service for Southwest Edmonton. Bus routes are to be confirmed in conjunction with the City of Edmonton's overall Bus Network Redesign project.

The Transit Centre will also be used to provide a shuttle service to and from Century Park, until such time that the Capital Line LRT is extended to Ellerslie Road.

## Proposed shuttle service:

- Approximate 5 min frequency Weekday AM/PM Peak
- Approximate 10-15 min frequency Weekday midday & evening
- Approximate 10-15 min frequency on Weekends
- One-way travel time: 8-12 minutes





# Landscape Amenities



LANDSCAPED MEDIAN PERSPECTIVE VIEW



PLAZA PERSPECTIVE, NORTHEAST CORNER LOOKING SOUTHWEST

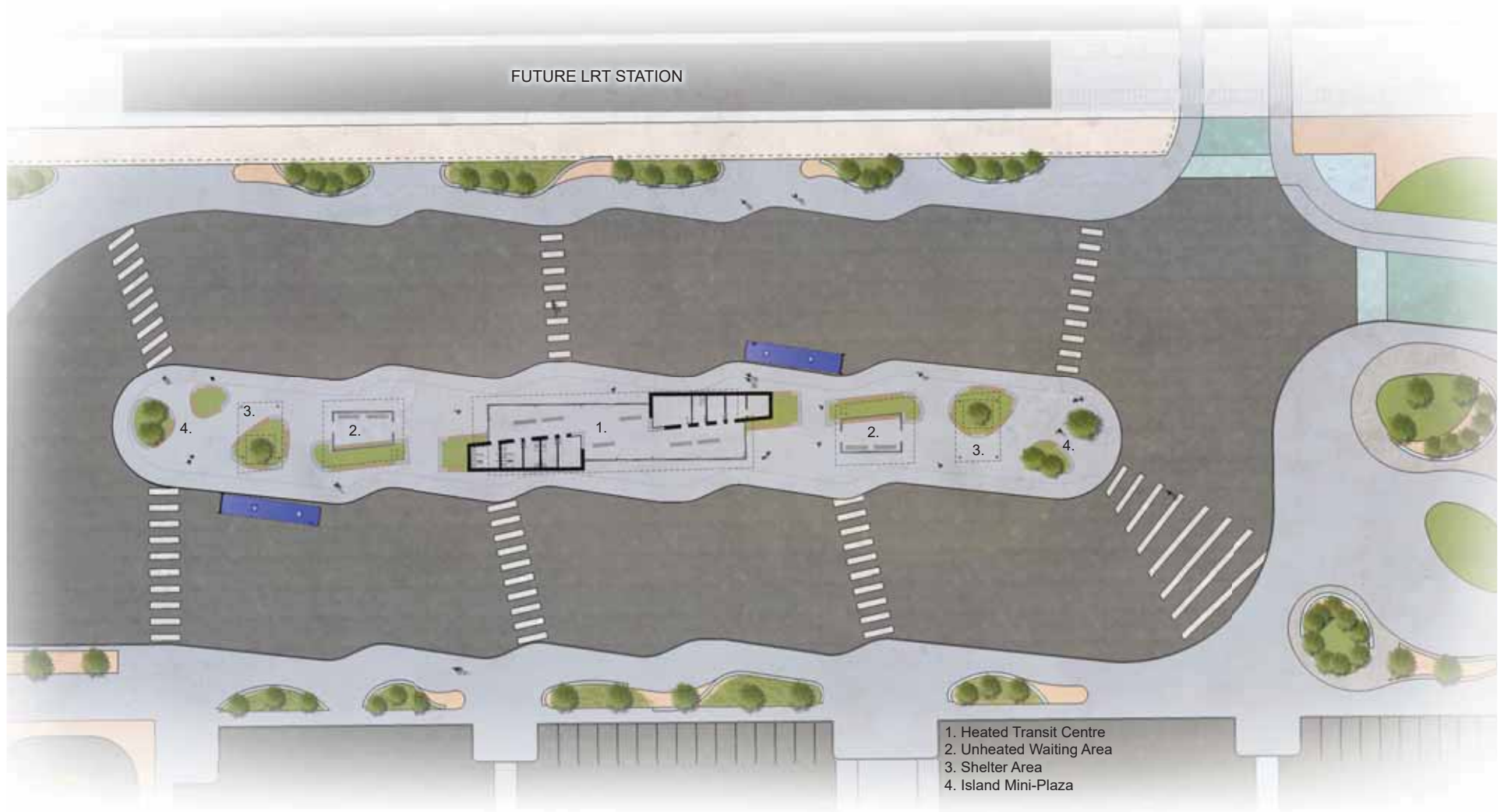


WALKWAY MEDIAN PERSPECTIVE VIEW



BICYCLE PARKING PERSPECTIVE, LOOKING NORTH

# Transit Centre Plan



# Transit Centre Perspective





# Transit Centre Perspective

