



Capital Line South Extension - Fact Sheet

Century Park to Ellerslie Road

The Capital Line South Extension is part of the City of Edmonton's Transportation Master Plan to expand LRT service to all sectors of the City by 2040.

Background

In 2008, City Council approved the Concept Plan for the Capital Line South Extension from Century Park to the south city limit. The Concept Plan confirmed the LRT corridor (route) and alignment (where the tracks will be within the corridor).

In 2010, preliminary design for a portion of the Capital Line South Extension, from Century Park to Ellerslie Road, was completed. At that time the project was called the South LRT Extension. This 4.5 km line is high-floor style and includes an underpass at 23 Avenue, bridge crossings at Blackmud Creek and Anthony Henday Drive, and an operations and maintenance facility south of Anthony Henday Drive. The south terminus of the project is at a future combined LRT station, transit centre, and Heritage Valley Park & Ride facility on the northwest corner of Ellerslie Road between 127 and 135 Streets.



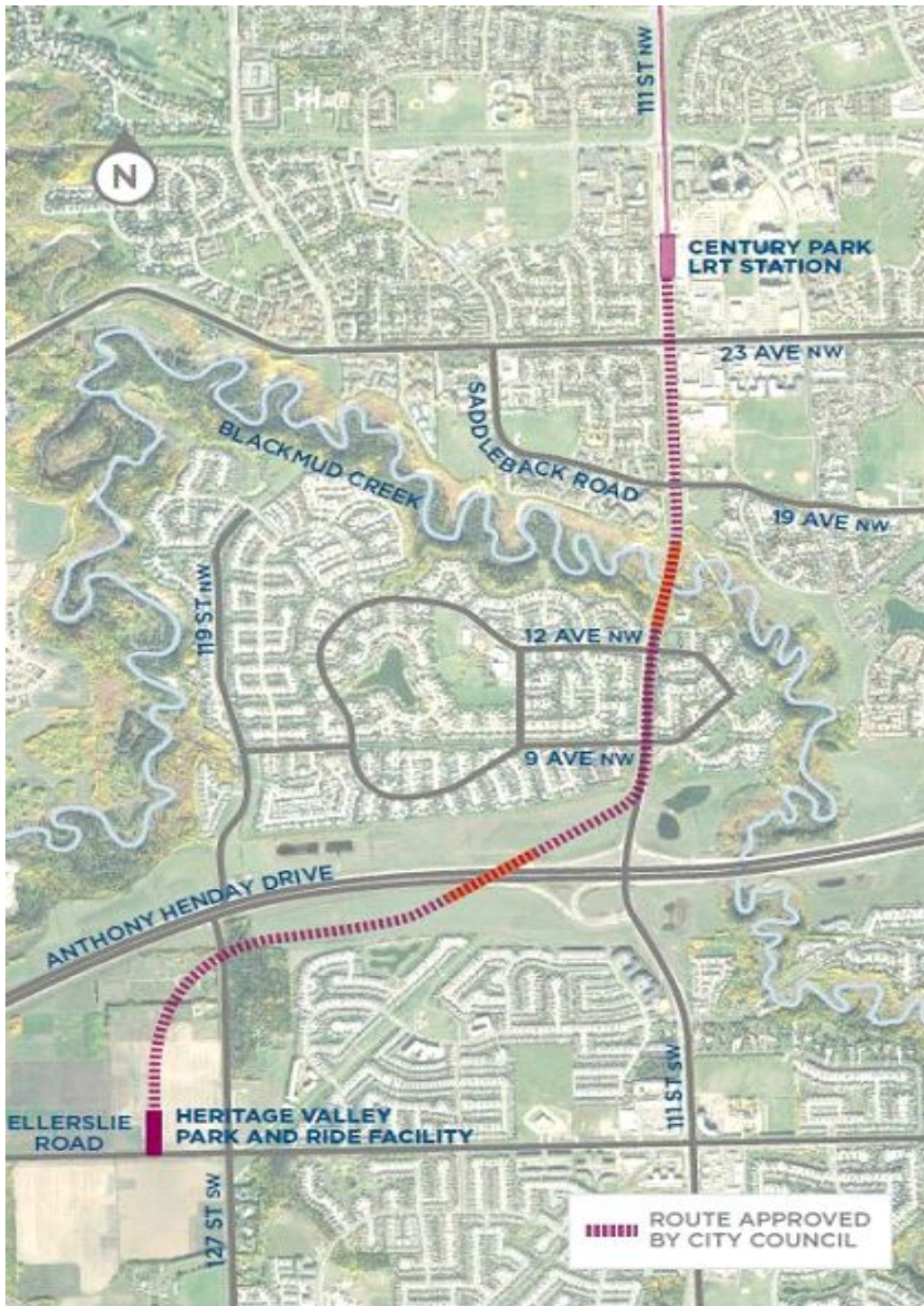
About the current Capital Line South Extension project

In September 2016, the Federal Government provided funding to support further development of the LRT network plan by the City of Edmonton. As one of several City transit projects utilizing this funding, the City is now undertaking supplemental work on the Capital Line South Extension. Updating of the preliminary design was initiated in June 2017 and is scheduled for completion in the fall of 2018. No timeline or funding for construction have been confirmed.

The current work will look at the feasibility of adding a station adjacent to Twin Brooks and how the LRT will cross 9 and 12 Avenues on 111 Street, and at Ellerslie Road. Integration of the stations into the adjacent communities, by looking at aesthetics and materials, is also being reviewed.



Capital Line South Extension: Century Park to Ellerslie Road



Moving Ahead

Many opportunities will be available to share your ideas for the Capital Line South Extension.

Survey – A survey, which is being conducted over the summer of 2017, can be found on the project web page at www.edmonton.ca/capitalsw. It is seeking information on your understanding of the Capital Line South Extension, your comments and concerns, and your input on the existing preliminary design and the potential changes.

Pop-Ups – A variety of pop-up dates and locations will take place throughout the summer and early fall of 2017. Watch for us!

Public Meetings – The first public meeting is being planned for late 2017. Watch the project webpage for the date and location. More public meetings will be scheduled in 2018.

For more Information about the Capital Line South Extension

Project webpage	www.edmonton.ca/capitalsw
LRT Projects Information Centre	780-496-4874
E-mail	LRTprojects@edmonton.ca
City of Edmonton Information Line	311
Join the e-mail update list	Email LRTprojects@edmonton.ca and enter "Subscribe to Capital Line South Extension" in the subject line.