



**West LRT Information Session**

[www.edmonton.ca/LRTProjects](http://www.edmonton.ca/LRTProjects)

**Welcome**

**Lewis Estates to  
Stony Plain Road Business District**

**November 29, 2010**

**CH2MHILL**

THE CITY OF  
**Edmonton**



# Tonight's Meeting Purpose

[www.edmonton.ca/LRTProjects](http://www.edmonton.ca/LRTProjects)

- Present Recommended Concept Plan
  - alignment
  - station locations
  - neighborhood access
  - noise study results
- Build on what we heard in September
- Recommendation is going forward for Committee of Council (TPW) consideration at non-statutory public hearing on December 8



# Proposed Agenda

[www.edmonton.ca/LRTProjects](http://www.edmonton.ca/LRTProjects)

- Welcome and Introductions
- Project Background
- Overall West LRT Recommended Alignment
- Segment walkthrough of alignment, stations, and neighborhood access
- Noise Study Results
- Question and Answer



**West LRT Information Session**  
*Lewis Estates to SPR Business District*

[www.edmonton.ca/LRTProjects](http://www.edmonton.ca/LRTProjects)

# Project Background

# Council Approvals

[www.edmonton.ca/LRTProjects](http://www.edmonton.ca/LRTProjects)

## Council Approvals to Date

- LRT Network Plan *(June, 2009)*
- Southeast and West LRT Corridor *(December, 2009)*
- Downtown Corridor *(June, 2010)*

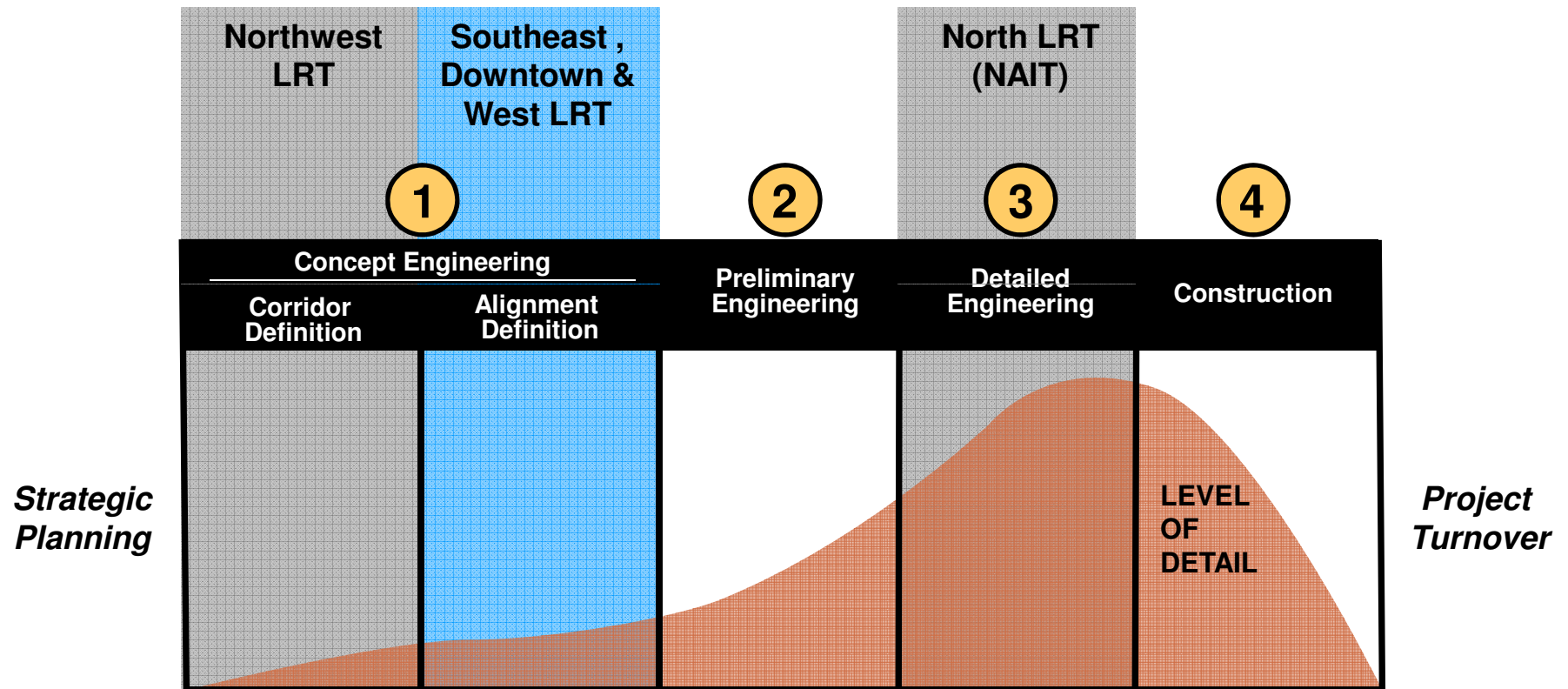


## Upcoming Council Considerations

- Concept Plan Review *(December 8, 2010)*
- Council Concept Plan Consideration *(January 19, 2011)*

# LRT Development

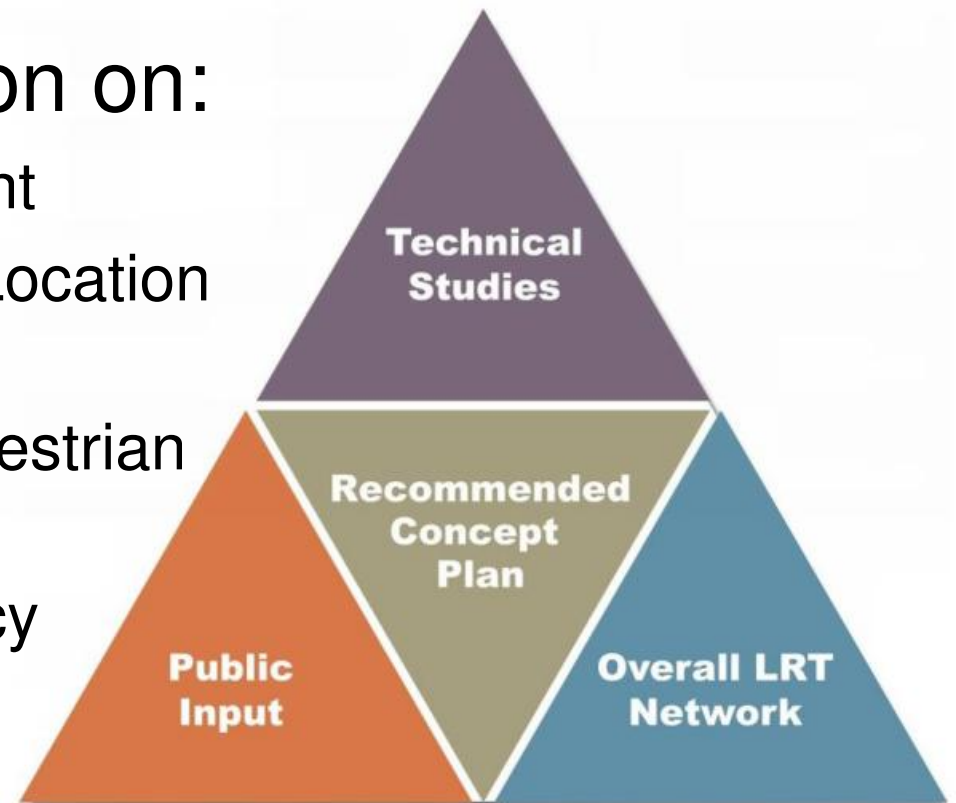
[www.edmonton.ca/LRTProjects](http://www.edmonton.ca/LRTProjects)



# Where We Are in the Process Today

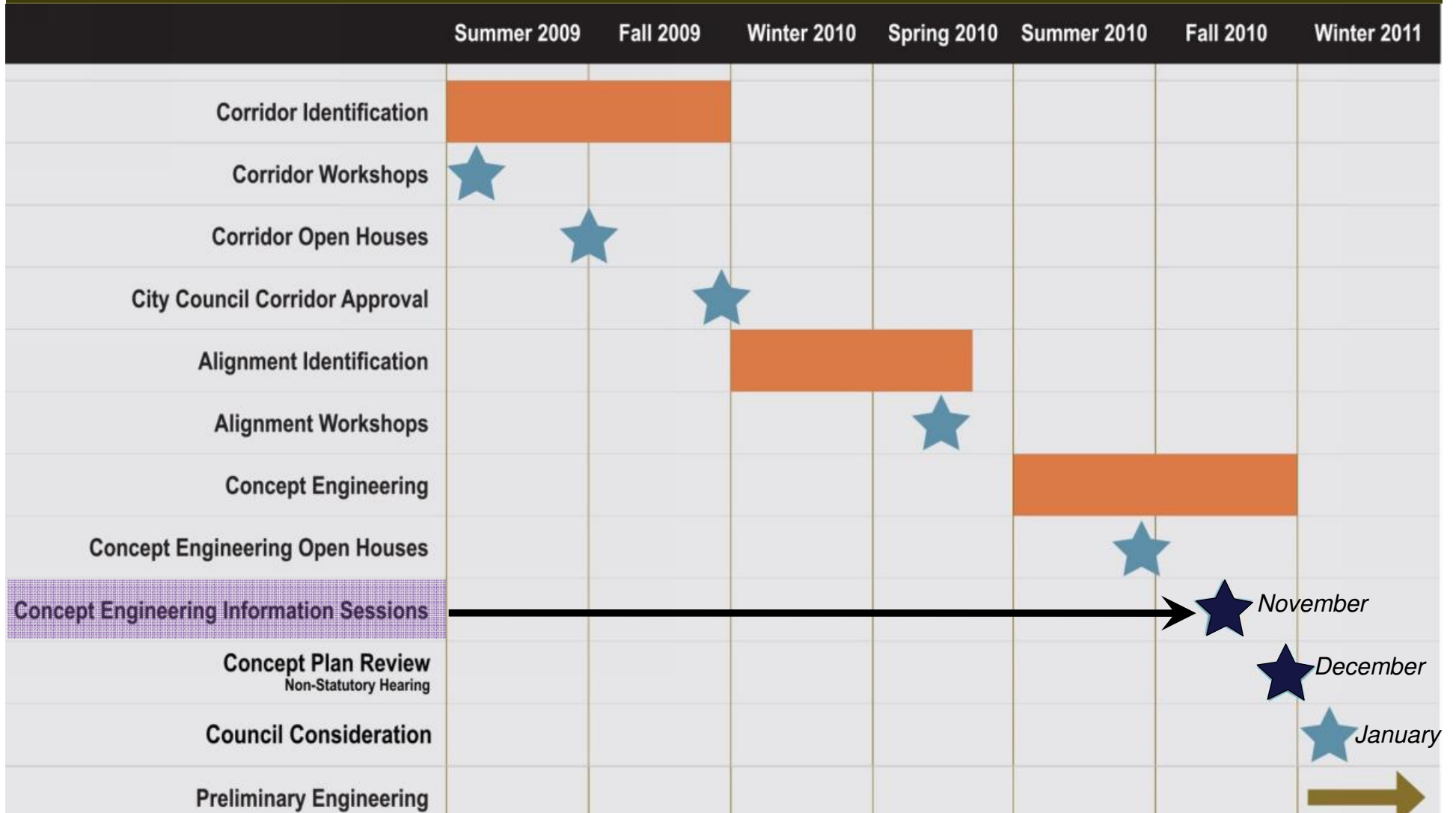
[www.edmonton.ca/LRTProjects](http://www.edmonton.ca/LRTProjects)

- Presenting information on:
  - Recommended Alignment
  - Recommended Station Location and Configuration
  - Neighbourhood and Pedestrian Access
  - Urban Traffic Noise Policy and Noise Study Results



# Where We Are Going

[www.edmonton.ca/LRTProjects](http://www.edmonton.ca/LRTProjects)





# LRT Network

[www.edmonton.ca/LRTProjects](http://www.edmonton.ca/LRTProjects)



# Urban Style LRT

[www.edmonton.ca/LRTProjects](http://www.edmonton.ca/LRTProjects)



Charlotte, North Carolina  
Willamor Media flicker



San Jose, CA  
© 2005 Peter Ehrlich



New Jersey, NY  
Paul David Gerber



Croydon, UK  
Andrew Grantham, FLicker

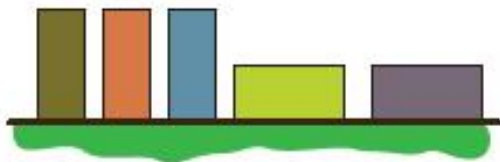


# Station Typologies

[www.edmonton.ca/LRTProjects](http://www.edmonton.ca/LRTProjects)



## Mixed Use / Town Centre Stations



## Employment Centre Stations

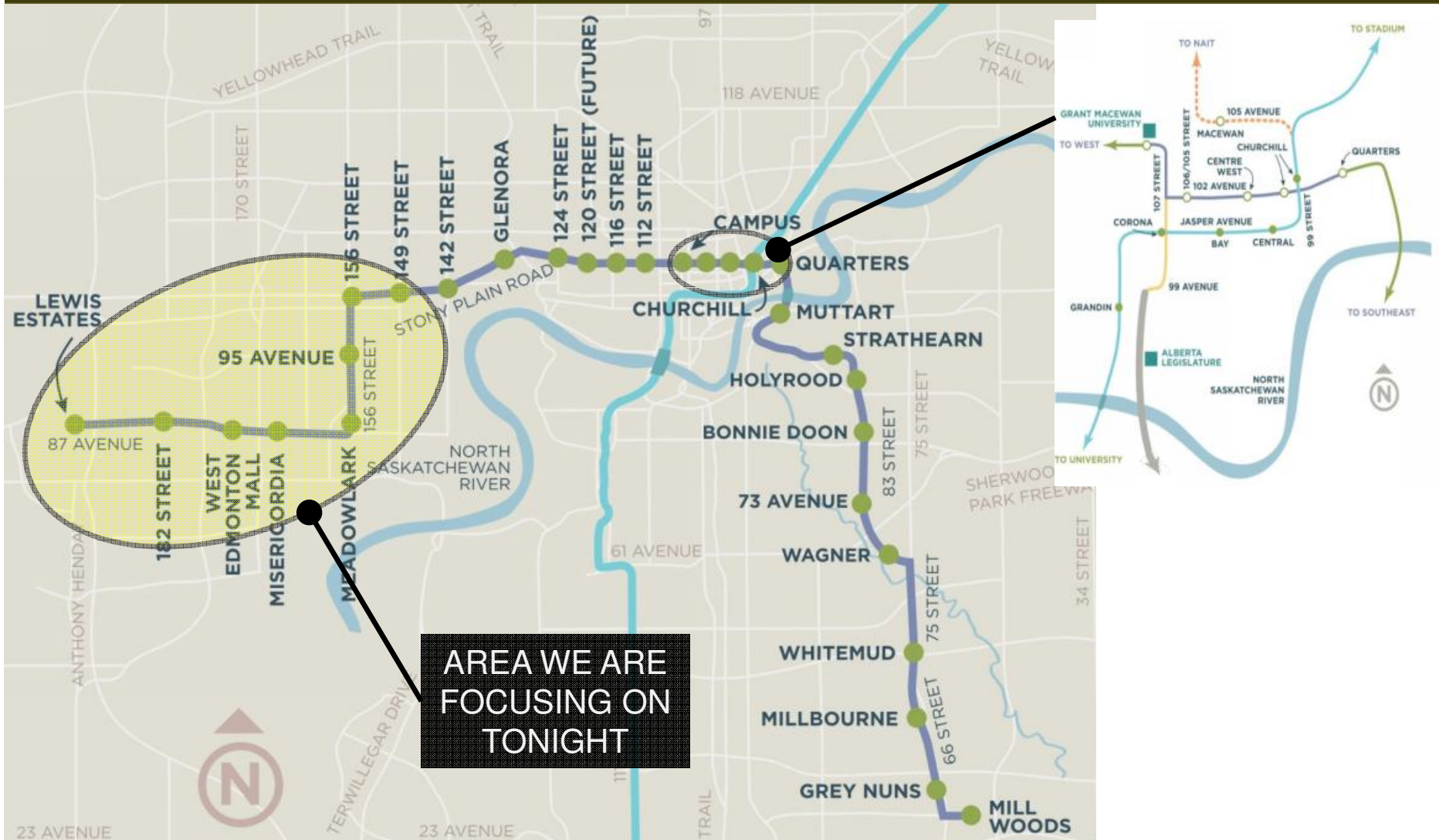


## Residential Centre Stations



# Southeast and West LRT Corridors

[www.edmonton.ca/LRTProjects](http://www.edmonton.ca/LRTProjects)





# West LRT Information Session

*Lewis Estates to SPR Business District*

[www.edmonton.ca/LRTProjects](http://www.edmonton.ca/LRTProjects)

## Public Involvement Process & Update

**CH2MHILL**

THE CITY OF  
**Edmonton**



# Process

[www.edmonton.ca/LRTProjects](http://www.edmonton.ca/LRTProjects)

## Review and Evaluate Options

- Community/neighbourhood-based workshops
- Stakeholder meetings and presentations

May/June 2010

## Present Draft Concept Plan for Feedback

- Open Houses with questionnaire

September 2010

## Info Sessions with Recommended Plan

November 2010

## Public Hearing/Council

December 2010

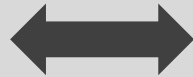


# What We Heard

[www.edmonton.ca/LRTProjects](http://www.edmonton.ca/LRTProjects)

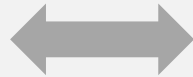
## *Competing Themes:*

ensure easy  
access into  
neighborhoods



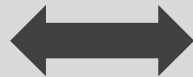
reducing  
travel lanes

station location



intersection  
operations

pedestrian access  
across the  
roadways



vehicle  
travel times

neighborhood  
access



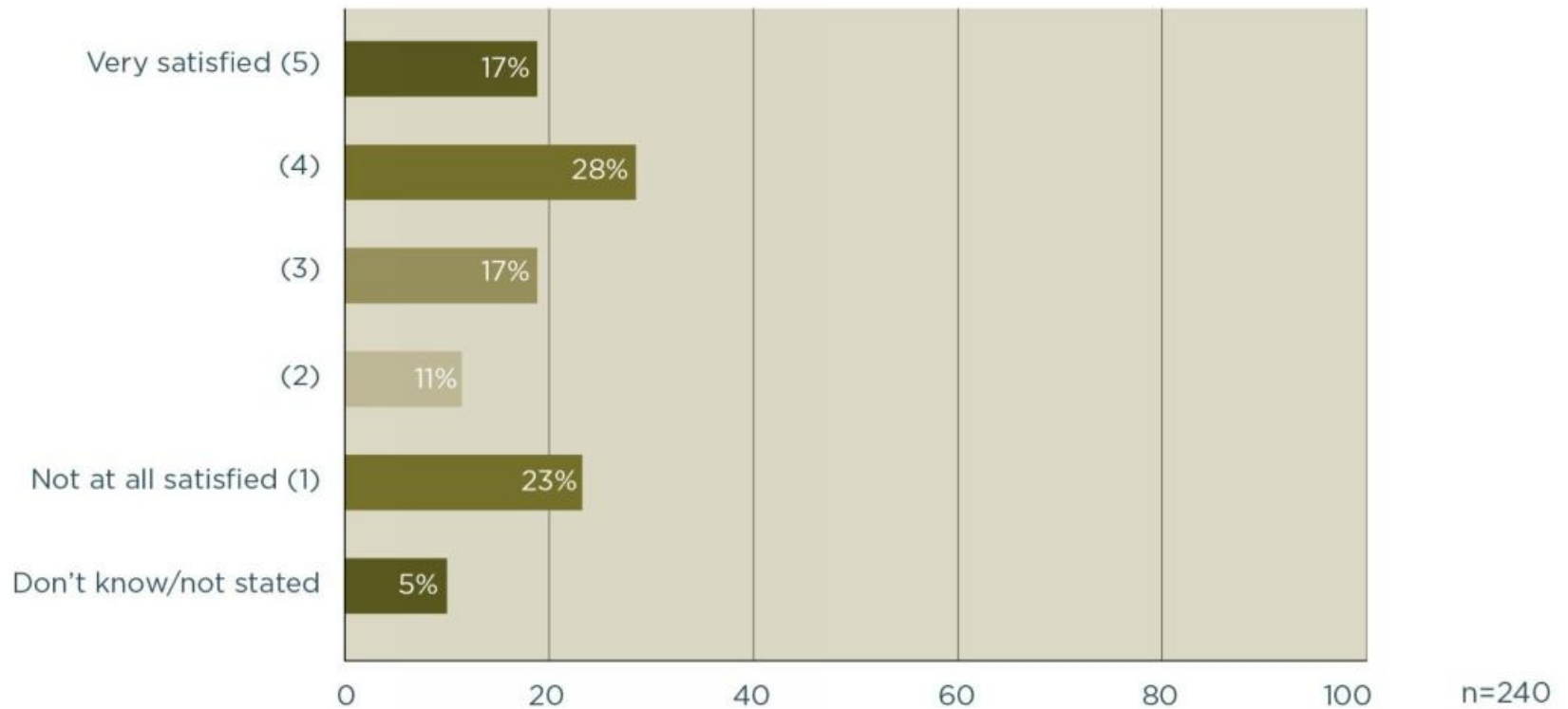
neighborhood  
short-cutting



# Concept Plan Satisfaction

[www.edmonton.ca/LRTProjects](http://www.edmonton.ca/LRTProjects)

*How satisfied were you with the Draft LRT Concept Plan?*

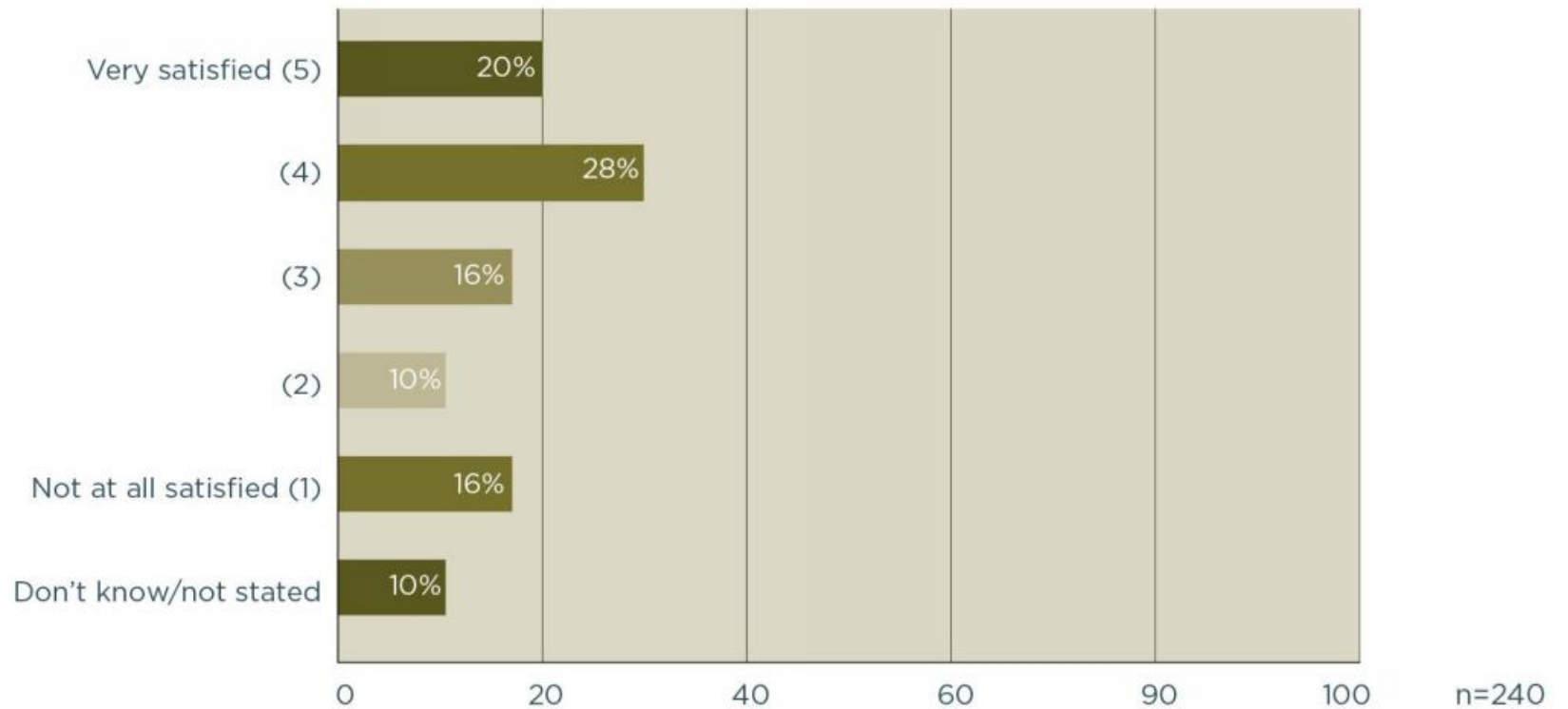




# LRT Alignment

[www.edmonton.ca/LRTProjects](http://www.edmonton.ca/LRTProjects)

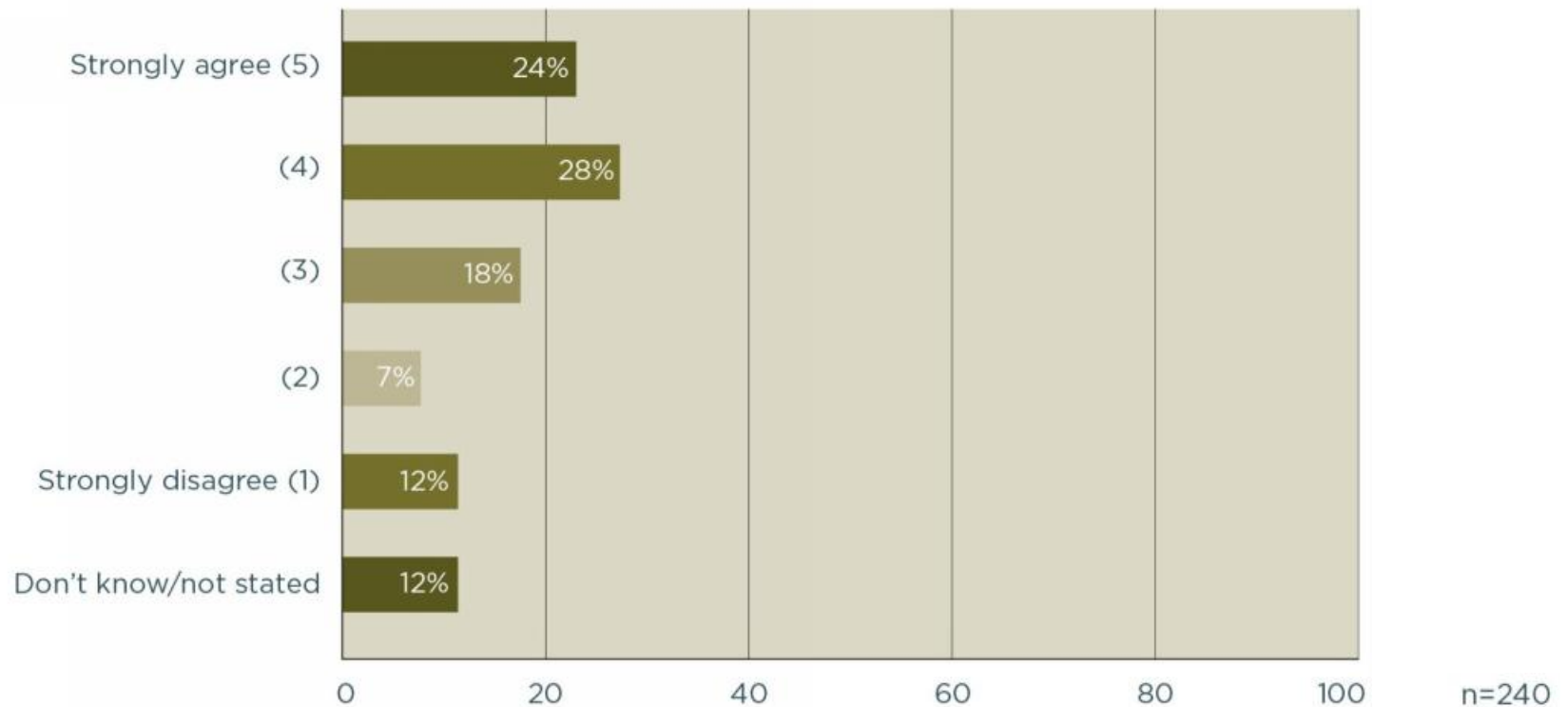
*How satisfied are you with the proposed track location within the LRT Corridor?*



# Station Locations

[www.edmonton.ca/LRTProjects](http://www.edmonton.ca/LRTProjects)

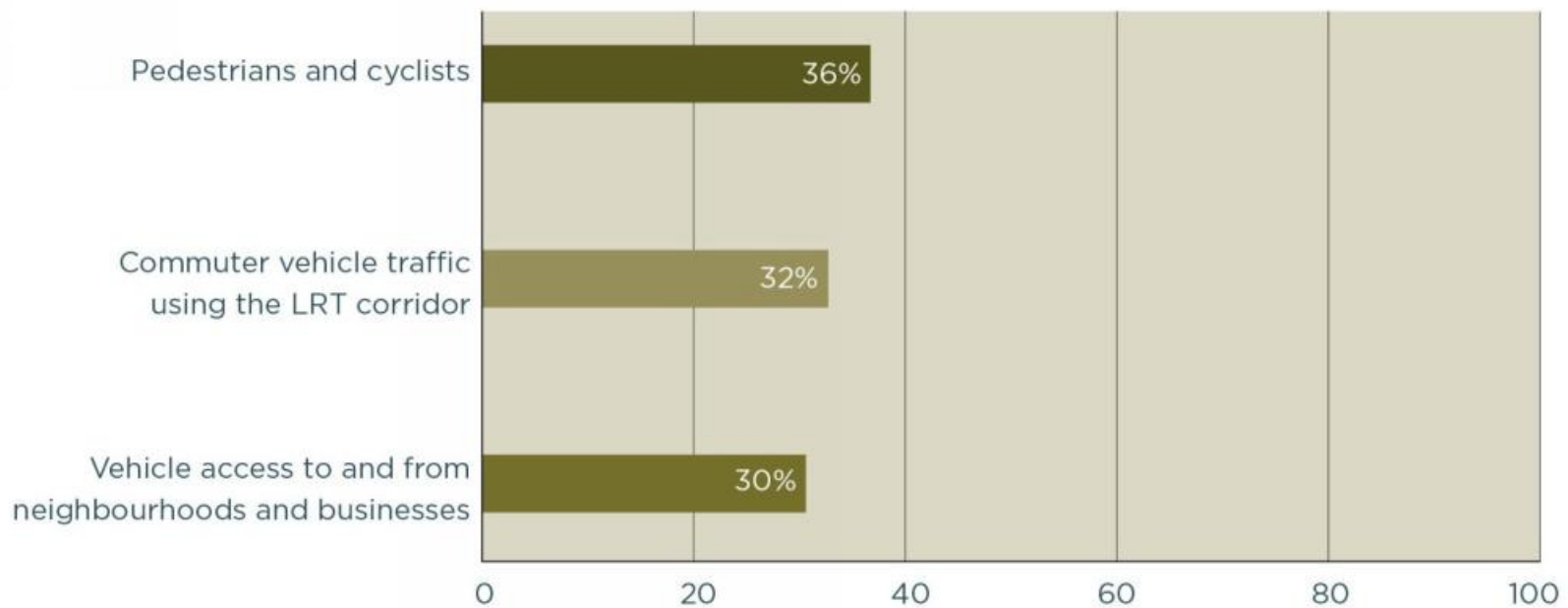
*Agreement that the proposed LRT station locations will provide convenient access to important destinations?*



# Access

[www.edmonton.ca/LRTProjects](http://www.edmonton.ca/LRTProjects)

## *Satisfaction with efforts to accommodate the following user groups*



n=240



# West LRT Information Session

## *Lewis Estates to SPR Business District*

[www.edmonton.ca/LRTProjects](http://www.edmonton.ca/LRTProjects)

# Recommended Alignment





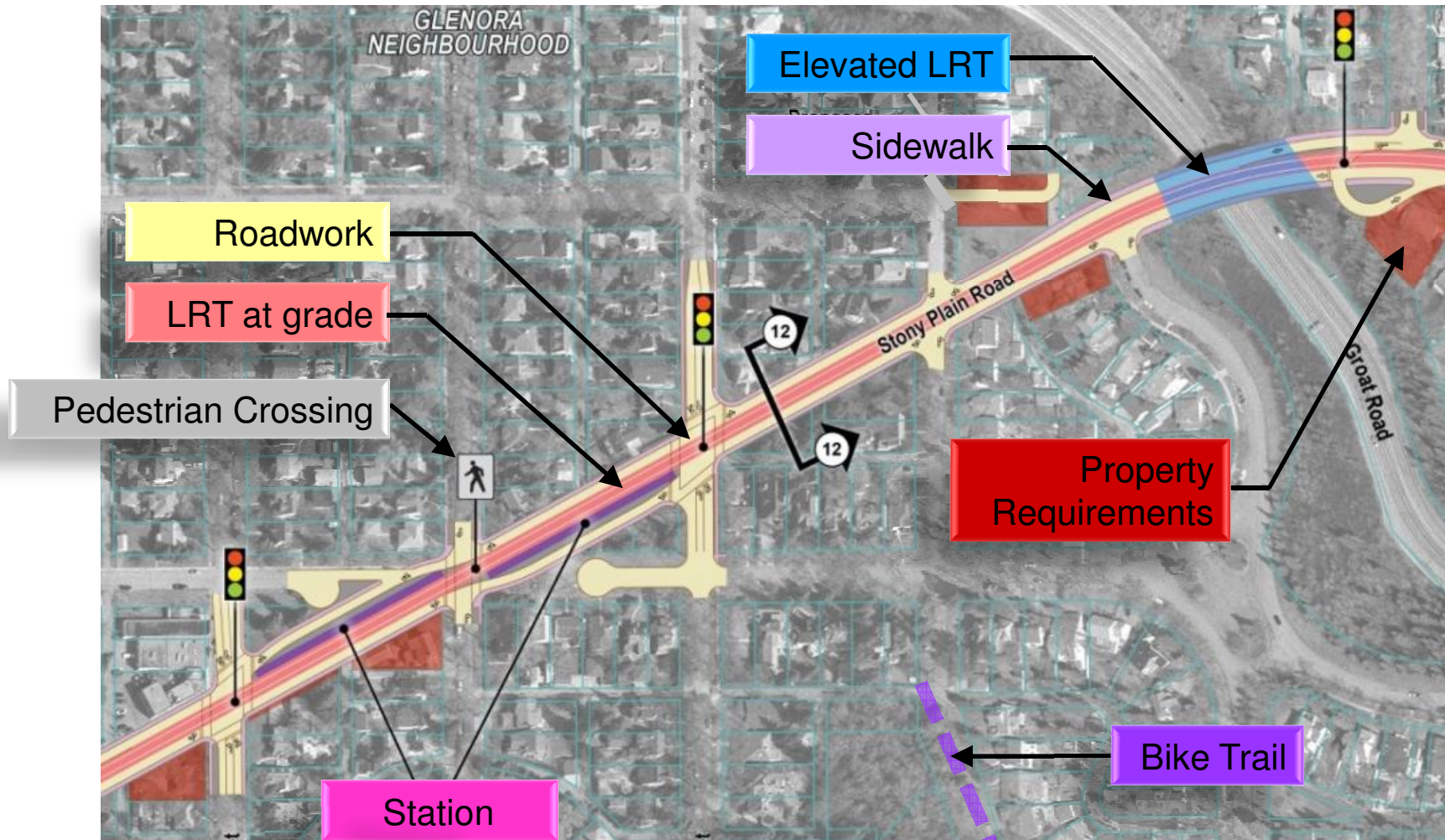
# Highlighted Changes Since September

[www.edmonton.ca/LRTProjects](http://www.edmonton.ca/LRTProjects)

- The 182 Street station moved to west side of 182 Street
- Access to Misericordia Hospital at 169 Street/87 Avenue
- On-street parking added on the 87 Avenue between 165 Street and 159 Street
- The fire station located on 156 Street must be relocated
- The Jasper Place bus terminal will be relocated closer to LRT Station
- Additional potential property requirements identified on Stony Plain Road as part of Jasper Place Revitalization Strategy
- A new right-in, right-out access will be created at 144 Street
- A new pedestrian crossing under Groat Road
- Station added at 120 Street
- 118 Street Station being moved to 116 Street

# Legend / Key

[www.edmonton.ca/LRTProjects](http://www.edmonton.ca/LRTProjects)

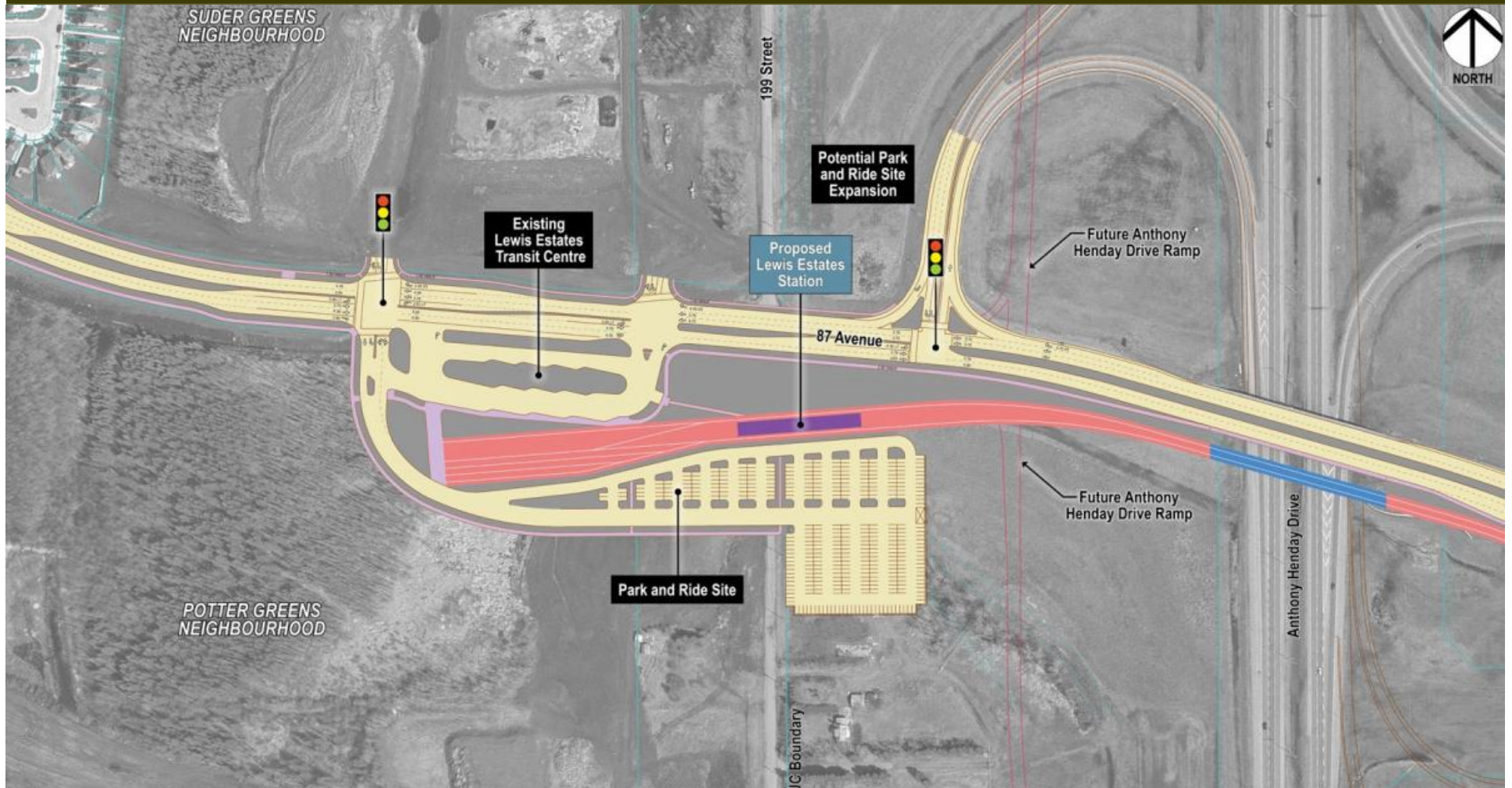




# Alignment / Stations – Lewis Estates

[www.edmonton.ca/LRTProjects](http://www.edmonton.ca/LRTProjects)

*subject to change*



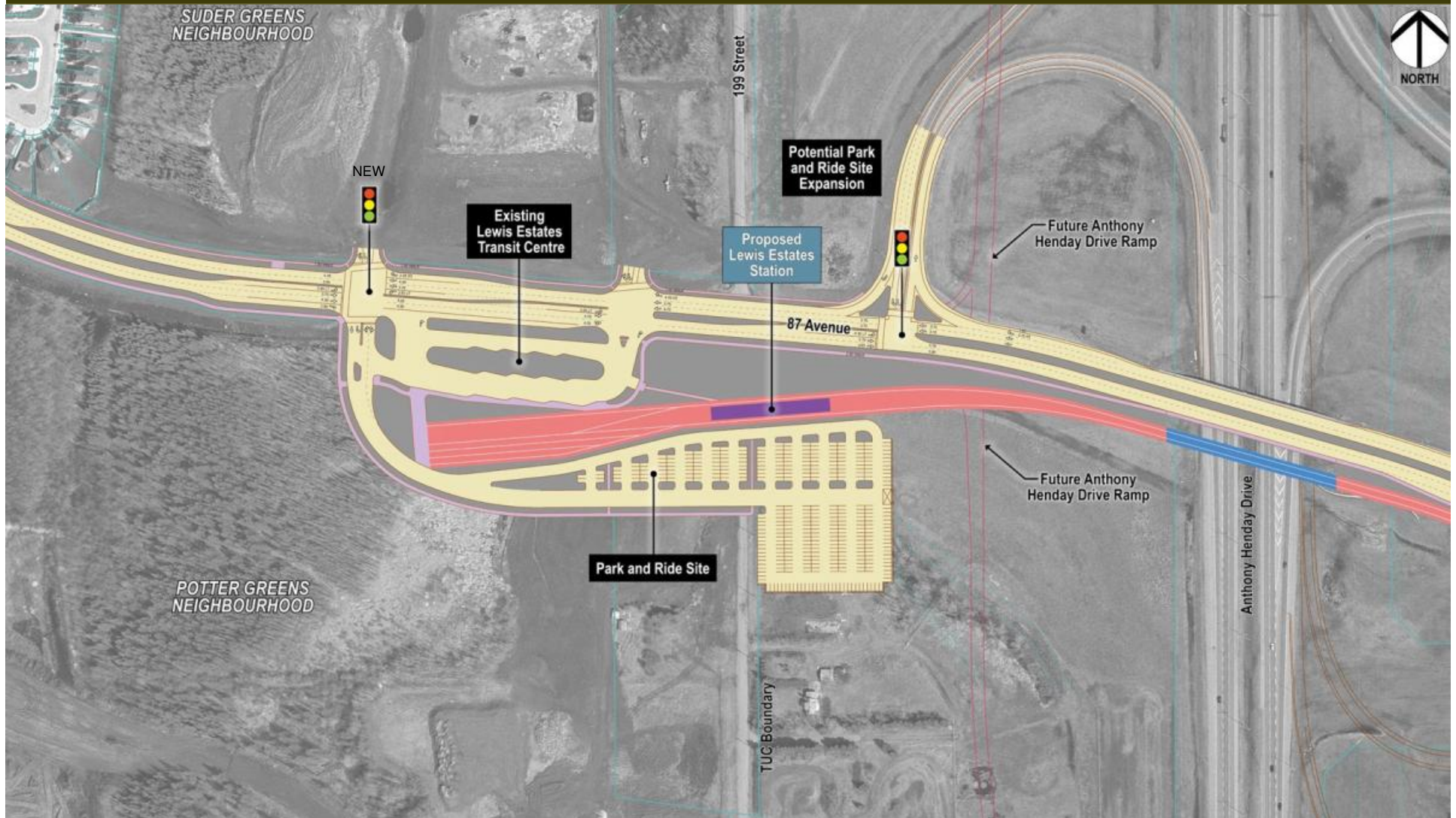
*Side Running LRT*



# Access – Lewis Estates

[www.edmonton.ca/LRTProjects](http://www.edmonton.ca/LRTProjects)

*subject to change*





# Alignment / Stations— Anthony Henday Drive

[www.edmonton.ca/LRTProjects](http://www.edmonton.ca/LRTProjects)

*subject to change*



*Side Running LRT*





# Access – Anthony Henday Drive

[www.edmonton.ca/LRTProjects](http://www.edmonton.ca/LRTProjects)

*subject to change*





# Alignment / Stations – Aldergrove / Belmead

[www.edmonton.ca/LRTProjects](http://www.edmonton.ca/LRTProjects)

*subject to change*



*Side Running LRT*

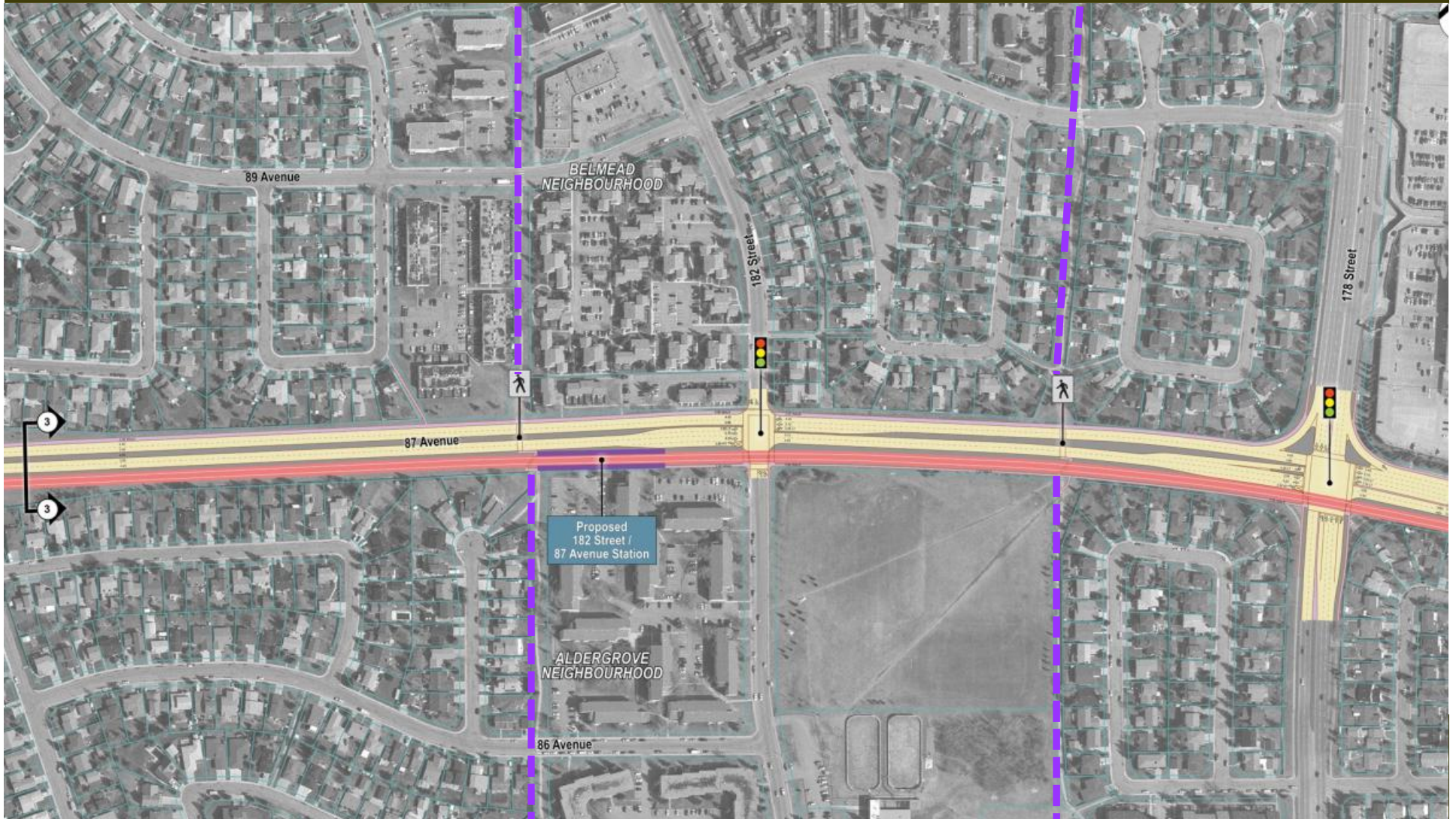




# Access – Aldergrove / Belmead

[www.edmonton.ca/LRTProjects](http://www.edmonton.ca/LRTProjects)

*subject to change*

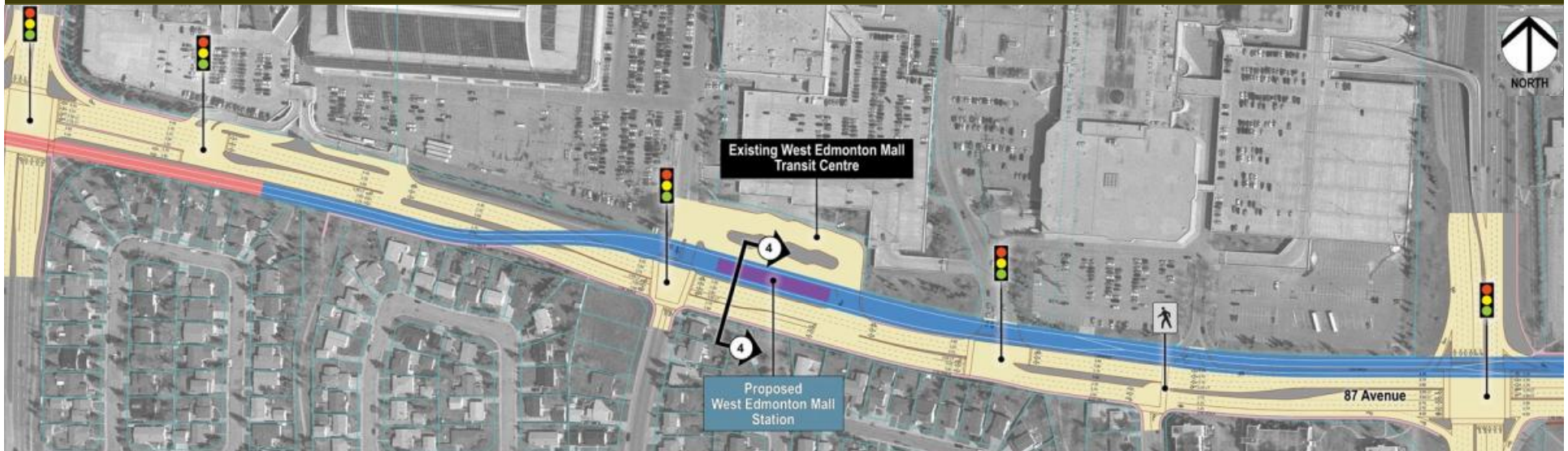




# Alignment / Stations – West Edmonton Mall

[www.edmonton.ca/LRTProjects](http://www.edmonton.ca/LRTProjects)

*subject to change*



*Elevated LRT*



# West Edmonton Mall

[www.edmonton.ca/LRTProjects](http://www.edmonton.ca/LRTProjects)







# Elevated LRT

[www.edmonton.ca/LRTProjects](http://www.edmonton.ca/LRTProjects)





# Access – West Edmonton Mall

[www.edmonton.ca/LRTProjects](http://www.edmonton.ca/LRTProjects)

*subject to change*





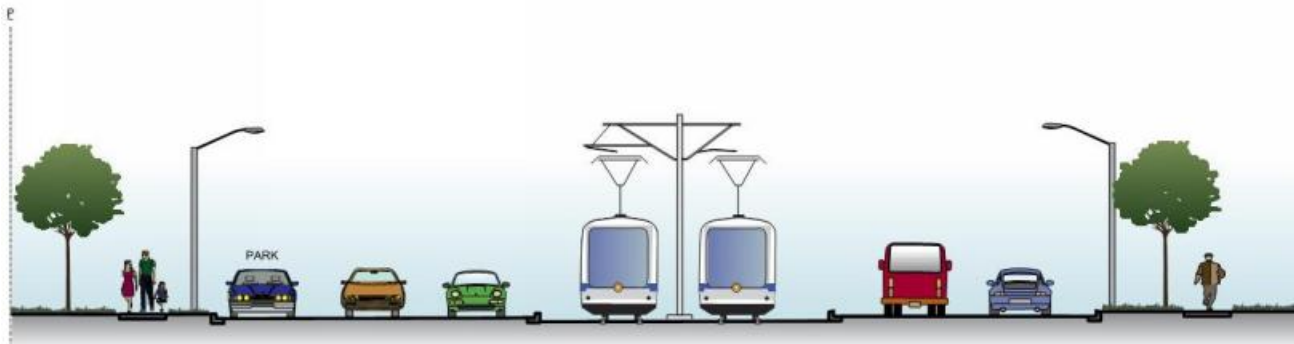
# Alignment / Stations – Misericordia

[www.edmonton.ca/LRTProjects](http://www.edmonton.ca/LRTProjects)

*subject to change*



*Elevated and Centre Running LRT*

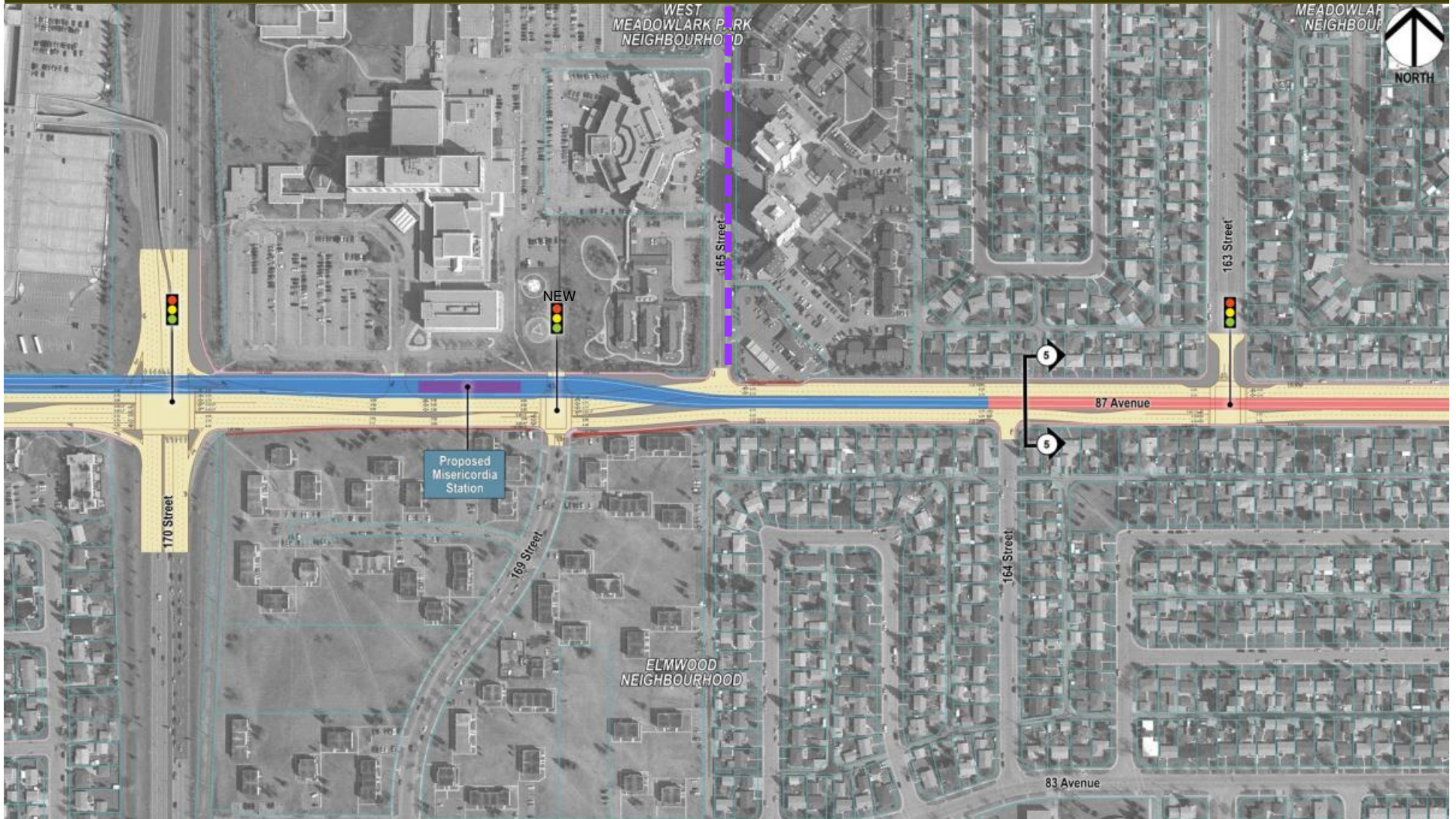




# Access – Misericordia

[www.edmonton.ca/LRTProjects](http://www.edmonton.ca/LRTProjects)

*subject to change*



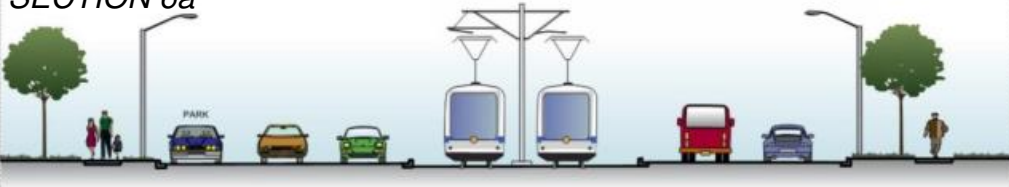


# Alignment / Stations – Meadowlark

[www.edmonton.ca/LRTProjects](http://www.edmonton.ca/LRTProjects)

*subject to change*

SECTION 6a



SECTION 6b



*Center Running LRT*



# Access – Meadowlark

[www.edmonton.ca/LRTProjects](http://www.edmonton.ca/LRTProjects)

*subject to change*





# Alignment / Stations – Meadowlark Park / Sherwood

[www.edmonton.ca/LRTProjects](http://www.edmonton.ca/LRTProjects)

*subject to change*



*Centre Running LRT*





# Meadowlark Park / Sherwood

[www.edmonton.ca/LRTProjects](http://www.edmonton.ca/LRTProjects)



**CH2MHILL**

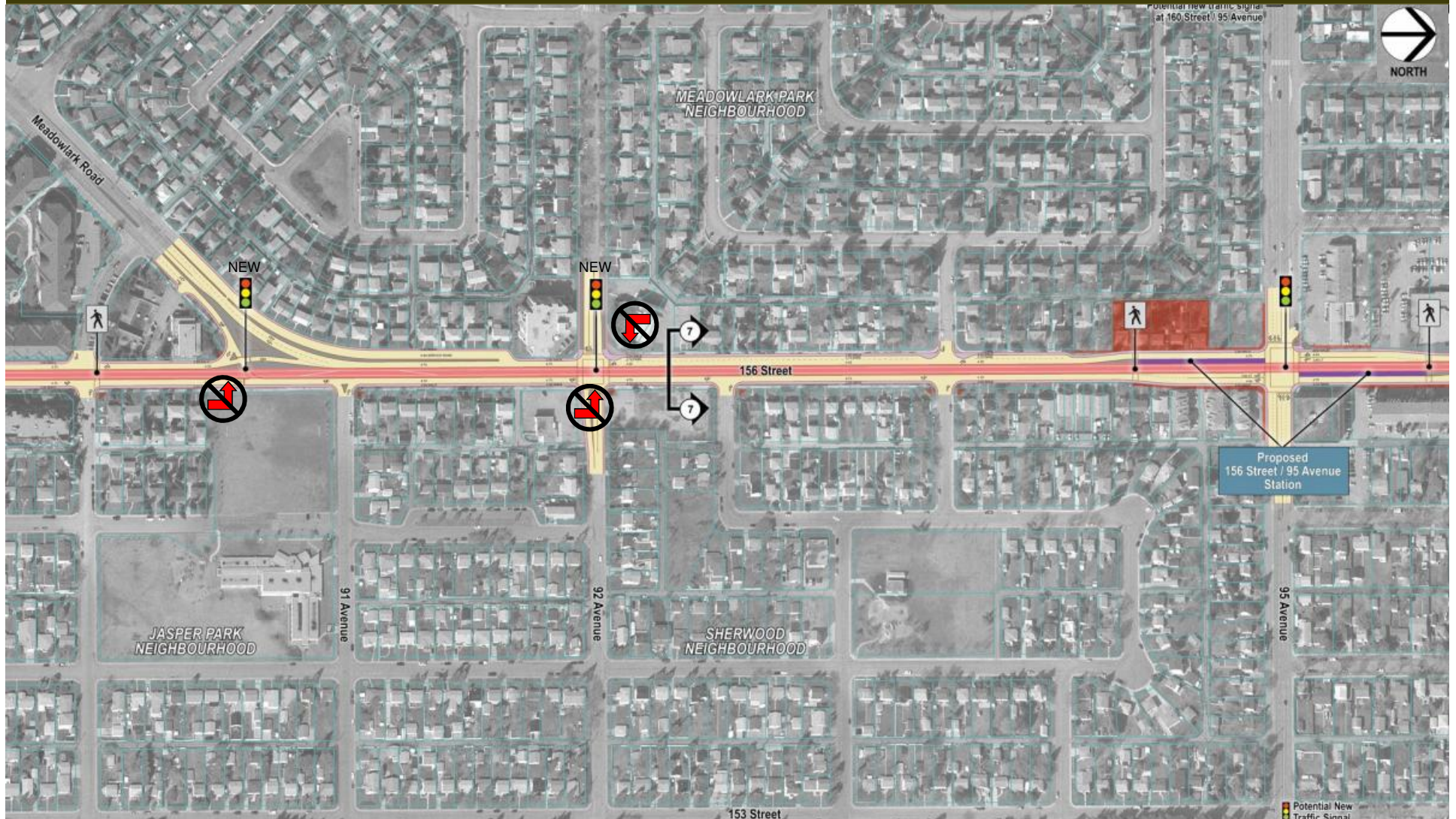
THE CITY OF  
**Edmonton**



# Access – Meadowlark Park / Sherwood

[www.edmonton.ca/LRTProjects](http://www.edmonton.ca/LRTProjects)

*subject to change*





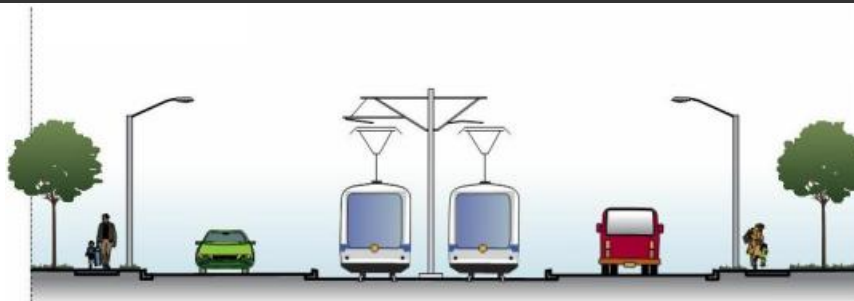
# Alignment / Stations – Glenwood / West Jasper Place

[www.edmonton.ca/LRTProjects](http://www.edmonton.ca/LRTProjects)

*subject to change*



*Centre Running LRT*





# Access – Glenwood / West Jasper Place

[www.edmonton.ca/LRTProjects](http://www.edmonton.ca/LRTProjects)

*subject to change*





# Alignment / Stations – Stony Plain Road Business District

[www.edmonton.ca/LRTProjects](http://www.edmonton.ca/LRTProjects)

*subject to change*



*Centre Running LRT*



Proposed Cross Section



Possible Cross Section

# Stony Plain Road Business District

[www.edmonton.ca/LRTProjects](http://www.edmonton.ca/LRTProjects)



THE CITY OF  
**Edmonton**



# Access – Stony Plain Road Business District

[www.edmonton.ca/LRTProjects](http://www.edmonton.ca/LRTProjects)

*subject to change*





# West LRT Information Session

*Lewis Estates to SPR Business District*

[www.edmonton.ca/LRTProjects](http://www.edmonton.ca/LRTProjects)

## Urban Traffic Noise Policy and Study Results

**CH2MHILL**

THE CITY OF  
**Edmonton**





# Urban Traffic Noise Policy (C506)

[www.edmonton.ca/LRTProjects](http://www.edmonton.ca/LRTProjects)

- City policy determines if noise attenuation is to be built with LRT
- A noise model is built to project future traffic noise with LRT and future traffic growth (20+ years)
- Future traffic noise levels must exceed 65 dBA <sub>Leq24</sub> to be considered for attenuation
- Noise attenuation needs through Capital or Retrofit projects

# Urban Traffic Noise Policy (C506)

[www.edmonton.ca/LRTProjects](http://www.edmonton.ca/LRTProjects)

- Applies to backyard of adjacent properties (centre of backyard)
- Minimum 60% support by adjacent property owners
- Stakeholders are involved in the determining the appearance of the proposed treatment
- Noise attenuation must be technically, administratively and economically practical



# How is Noise Modeling Done

[www.edmonton.ca/LRTProjects](http://www.edmonton.ca/LRTProjects)

- Measure existing noise levels along corridor and develop model
- Projected 2041 traffic volumes, proposed lane configuration and the addition of LRT
- Assess the projected noise levels against the UTNP





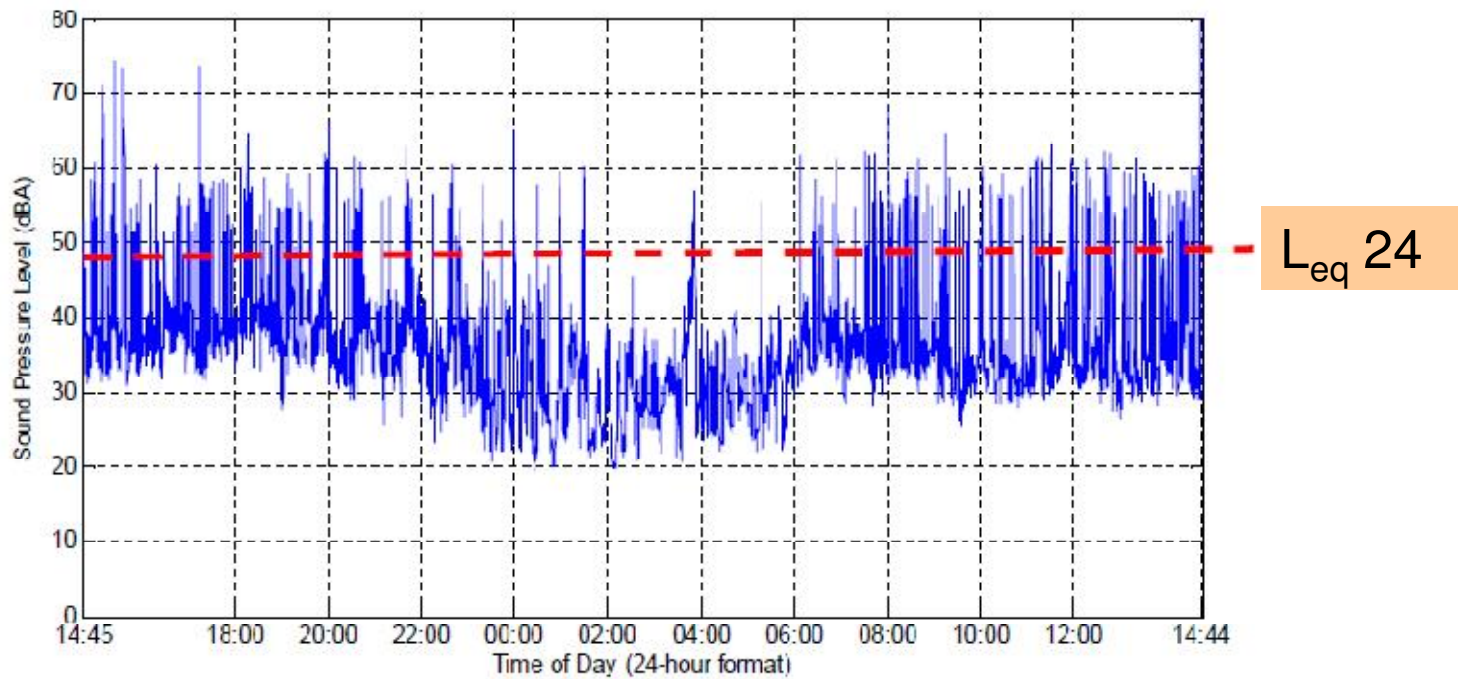
# Energy Equivalent Level ( $L_{eq}$ )

[www.edmonton.ca/LRTProjects](http://www.edmonton.ca/LRTProjects)

- Accounts for the fluctuating levels
- Is sensitive to the peak sounds
- Is NOT the average sound level
- Is used in the majority of sound regulations (City of Edmonton UTNP)

# Energy Equivalent Level ( $L_{eq}$ )

[www.edmonton.ca/LRTProjects](http://www.edmonton.ca/LRTProjects)







# Noise Study Results

[www.edmonton.ca/LRTProjects](http://www.edmonton.ca/LRTProjects)

- Sound levels ranging from 57.0 to 64.9 dBA  $_{Leq24}$  (as measured in the rear outdoor amenity area)
- Noise climate was dominated by either local traffic on the main or adjacent roads
- Noise climate was generally broadband in nature, with no tonal components and no dominant stationary sources



# West LRT Information Session

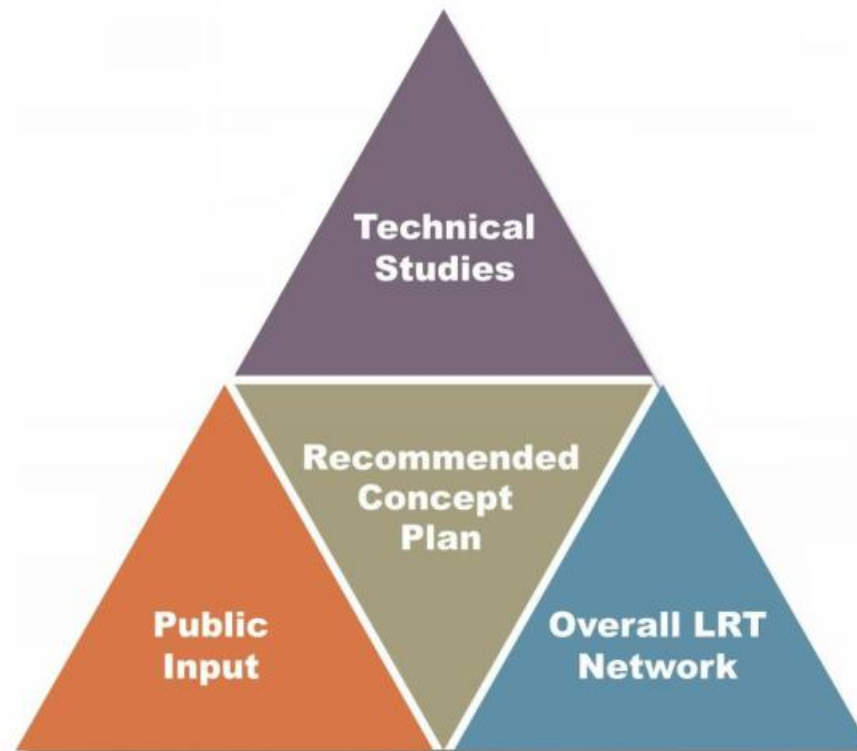
## *Lewis Estates to SPR Business District*

[www.edmonton.ca/LRTProjects](http://www.edmonton.ca/LRTProjects)

## Next Steps

# Overall Process

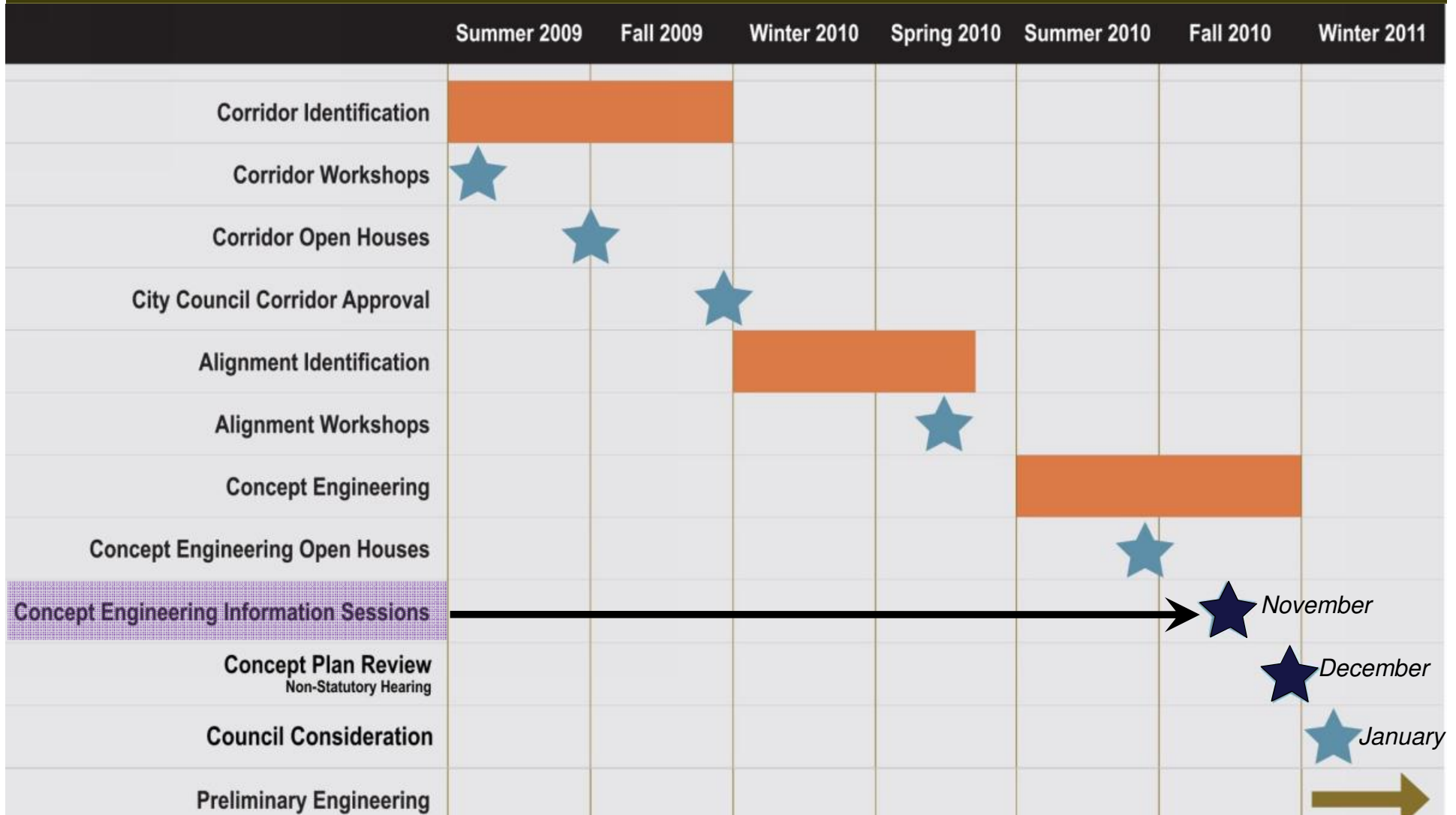
[www.edmonton.ca/LRTProjects](http://www.edmonton.ca/LRTProjects)





# Next Steps

[www.edmonton.ca/LRTProjects](http://www.edmonton.ca/LRTProjects)



# Ongoing Considerations

[www.edmonton.ca/LRTProjects](http://www.edmonton.ca/LRTProjects)



- Available parking programs
  - Commercial  
*(Bylaw 5590 signs, Private Parking Agency Enforcement)*
  - Residential  
*(Residential Parking Programs, localized parking restrictions)*
  - Additional engineering and study is required
- Safety/Security
- Traffic circulation within neighbourhoods
- Station Area Planning

# Ongoing Considerations

[www.edmonton.ca/LRTProjects](http://www.edmonton.ca/LRTProjects)

- Funding
- Traffic accommodation during construction
- Geotechnical / Environmental / Utilities
- Community / Business impacts







# West LRT Information Session

## *Lewis Estates to SPR Business District*

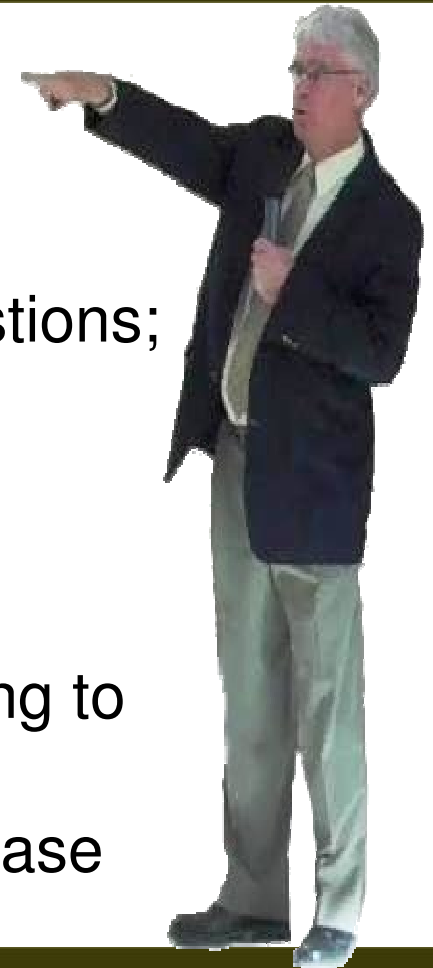
[www.edmonton.ca/LRTProjects](http://www.edmonton.ca/LRTProjects)

# Question and Answer

# Question and Answer Session “Ground Rules”

[www.edmonton.ca/LRTProjects](http://www.edmonton.ca/LRTProjects)

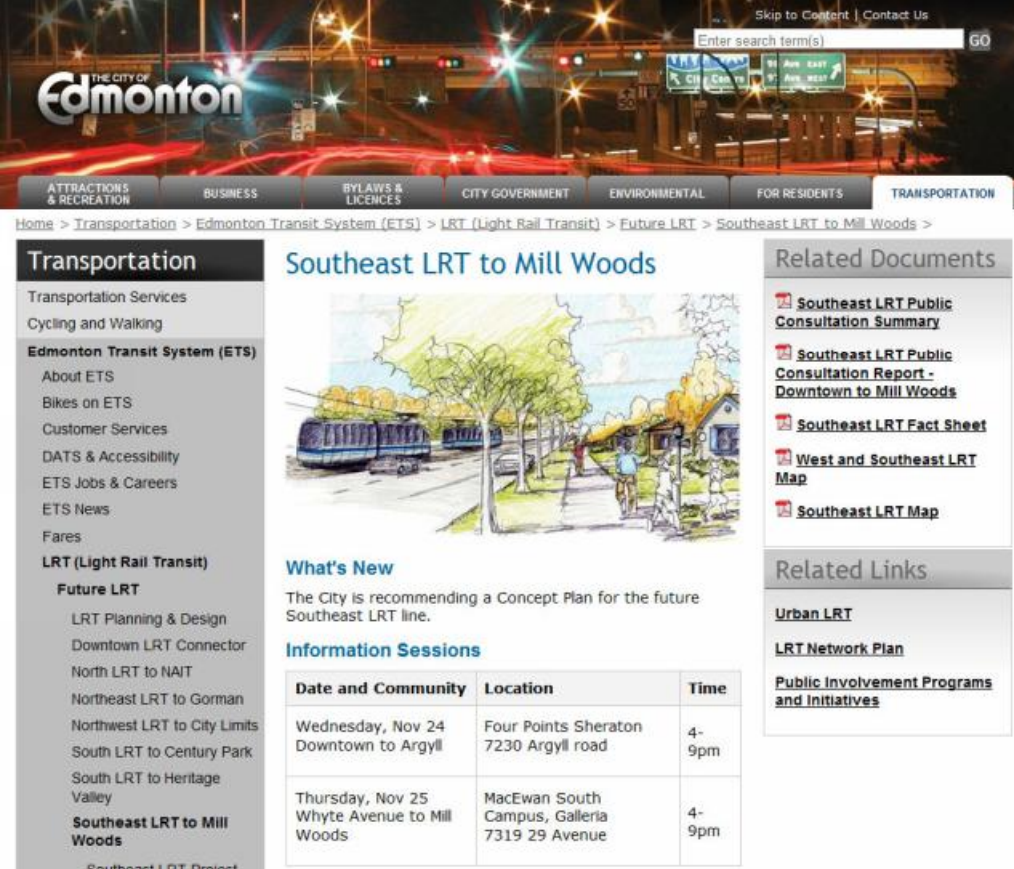
- 2 minutes for each participant to ask a question or make a comment
- One follow-up question (1 minute)
- Will recognize 3 people for each round of questions; persons with microphones will go to those participants to ask their questions
- 3 rounds of questions
- Additional questions from same person not recognized until no new participants are wanting to ask questions
- Questions and responses will be recorded; please use microphones



# Conclusion

[www.edmonton.ca/LRTProjects](http://www.edmonton.ca/LRTProjects)

Presentation  
available on  
website:



The screenshot shows the City of Edmonton website interface. At the top, there is a navigation bar with categories: ATTRACTIONS & RECREATION, BUSINESS, BYLAWS & LICENCES, CITY GOVERNMENT, ENVIRONMENTAL, FOR RESIDENTS, and TRANSPORTATION. The main content area is titled "Southeast LRT to Mill Woods" and features a large illustration of a light rail train on a track. Below the illustration, there is a "What's New" section stating: "The City is recommending a Concept Plan for the future Southeast LRT line." To the right of this text is a table of information sessions. On the left side of the page, there is a sidebar menu with categories: Transportation, Edmonton Transit System (ETS), and LRT (Light Rail Transit). The "LRT (Light Rail Transit)" section is expanded to show "Future LRT" projects, including "Southeast LRT to Mill Woods". On the right side, there are sections for "Related Documents" and "Related Links".

**Transportation**

- Transportation Services
- Cycling and Walking

**Edmonton Transit System (ETS)**

- About ETS
- Bikes on ETS
- Customer Services
- DATS & Accessibility
- ETS Jobs & Careers
- ETS News
- Fares

**LRT (Light Rail Transit)**

- Future LRT**
  - LRT Planning & Design
  - Downtown LRT Connector
  - North LRT to NAIT
  - Northeast LRT to Gorman
  - Northwest LRT to City Limits
  - South LRT to Century Park
  - South LRT to Heritage Valley
  - Southeast LRT to Mill Woods**

**Southeast LRT to Mill Woods**

**What's New**

The City is recommending a Concept Plan for the future Southeast LRT line.

**Information Sessions**

Date and Community	Location	Time
Wednesday, Nov 24 Downtown to Argyll	Four Points Sheraton 7230 Argyll road	4-9pm
Thursday, Nov 25 Whyte Avenue to Mill Woods	MacEwan South Campus, Galleria 7319 29 Avenue	4-9pm

**Related Documents**

- [Southeast LRT Public Consultation Summary](#)
- [Southeast LRT Public Consultation Report - Downtown to Mill Woods](#)
- [Southeast LRT Fact Sheet](#)
- [West and Southeast LRT Map](#)
- [Southeast LRT Map](#)

**Related Links**

- [Urban LRT](#)
- [LRT Network Plan](#)
- [Public Involvement Programs and Initiatives](#)

[www.edmonton.ca/LRTProjects](http://www.edmonton.ca/LRTProjects)





# Conclusion

[www.edmonton.ca/LRTProjects](http://www.edmonton.ca/LRTProjects)

- Register to speak at Public Hearing

**WEDNESDAY, DECEMBER 8, 2010**

**AT TRANSPORTATION AND PUBLIC WORKS COMMITTEE**

- Register to speak on [www.edmonton.ca/meetings](http://www.edmonton.ca/meetings) or call the City Clerk's office at **780-496-8178**.
- Following the non-statutory public hearing, the LRT Concept Plan recommendation will be forwarded to City Council for review and consideration in January 2011



# LRT Information Session Schedule

[www.edmonton.ca/LRTProjects](http://www.edmonton.ca/LRTProjects)

## Southeast LRT

November 24, 2010

Lewis Estates to Argyll Road

November 25, 2010

Whyte Avenue to Mill Woods Town Centre

## West LRT

November 29, 2010

Lewis Estates to Stony Plain Road/149 Street

November 30, 2010

Stony Plain Road/149 Street to Downtown

[www.edmonton.ca/LRTProjects](http://www.edmonton.ca/LRTProjects)



**West LRT Information Sessions**  
*Lewis Estates to SPR Business District*

[www.edmonton.ca/LRTProjects](http://www.edmonton.ca/LRTProjects)

**Thank you!**

**CH2MHILL**

THE CITY OF  
**Edmonton**