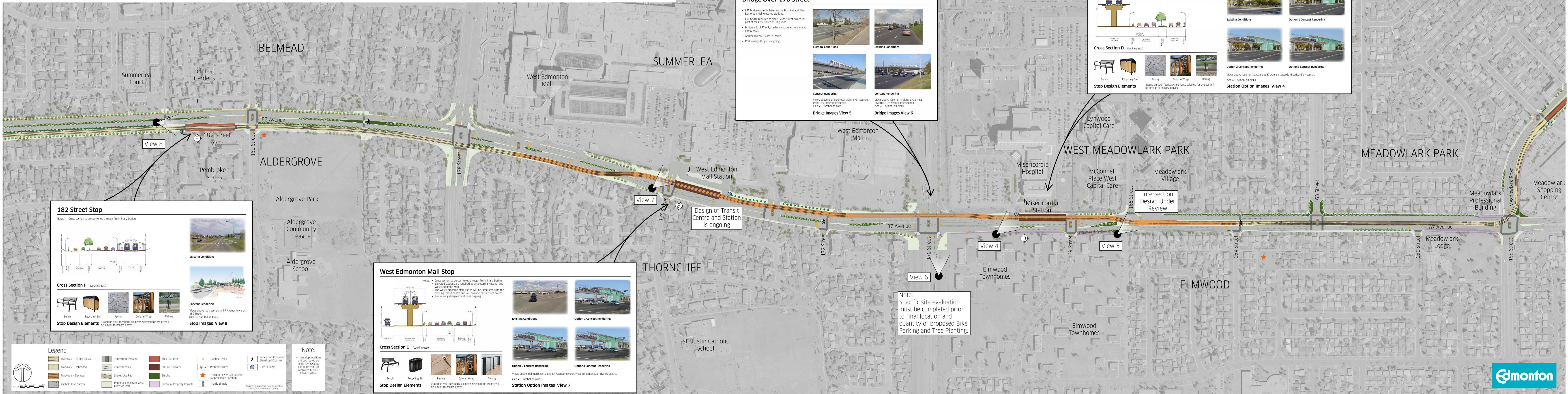


Corridor & Access Plan - Area 6B



Bridge Over 170 Street

- LRT bridge connects Misericordia Hospital and West Edmonton Mall elevated stations.
- LRT bridge required to clear 170th Street, which is part of the City's Interior Ring Road.
- Bridge is for LRT only; pedestrian connections are at street level.
- Approximately 1.9km in length.
- Preliminary design is ongoing.

Existing Conditions

Concept Rendering

Views above look northeast along 87 Avenue from 155 Street intersection (See ◀ symbol on plan)

Bridge Images View 5

Existing Conditions

Concept Rendering

Views above look north along 170 Street towards 87th Avenue intersection (See ▶ symbol on plan)

Bridge Images View 6

Misericordia Stop

Notes:

- Cross section to be confirmed through Preliminary Design.
- Elevated stations are required at Misericordia Hospital and West Edmonton Mall.
- The Misericordia Hospital station will provide barrier-free access to Misericordia Hospital and surrounding community.
- Preliminary design of station is ongoing.

Cross Section D (Looking east)

Existing Conditions

Option 1 Concept Rendering

Option 2 Concept Rendering

Option 3 Concept Rendering

Views above look northeast along 87 Avenue towards Misericordia Hospital. (See ◀ symbol on plan)

Station Option Images View 4

Bench

Recycling Bin

Paving

Column Wrap

Railing

Stop Design Elements (Based on your feedback, elements selected for project will be similar to images above)

182 Street Stop

Notes: Cross section to be confirmed through Preliminary Design.

Cross Section F (Looking East)

Existing Conditions

Concept Rendering

Views above look east along 87 Avenue towards 182 Street (See ◀ symbol on plan)

Stop Images View 8

Bench

Recycling Bin

Paving

Column Wrap

Railing

Stop Design Elements (Based on your feedback, elements selected for project will be similar to images above)

West Edmonton Mall Stop

Notes:

- Cross section to be confirmed through Preliminary Design.
- Elevated stations are required at Misericordia Hospital and West Edmonton Mall.
- The West Edmonton Mall station will be integrated with the existing transit centre and will provide barrier-free access.
- Preliminary design of station is ongoing.

Cross Section E (Looking east)

Existing Conditions

Option 1 Concept Rendering

Option 2 Concept Rendering

Option 3 Concept Rendering

Views above look northeast along 87 Avenue towards West Edmonton Mall Transit Centre. (See ◀ symbol on plan)

Station Option Images View 7

Bench

Recycling Bin

Paving

Column Wrap

Railing

Stop Design Elements (Based on your feedback, elements selected for project will be similar to images above)

Note: Specific site evaluation must be completed prior to final location and quantity of proposed Bike Parking and Tree Planting.

Design of Transit Centre and Station is ongoing

Intersection Design Under Review

Legend

Note: All bus stop locations and bus routes are being reviewed by ETS to provide an integrated bus/LRT transit system. Specific site evaluation must be completed prior to final location and quantity.