



Southeast LRT Workshop Session

www.edmonton.ca/LRTProjects

Welcome

Strathearn to Bonnie Doon

May 19, 2010

CH2MHILL

THE CITY OF
Edmonton



Tonight's Meeting Purpose

www.edmonton.ca/LRTProjects

- To provide more detailed information on Southeast LRT concept engineering
- To provide specific detail on alignment alternatives for Connors Road/95 Ave to 82 Street /83 Avenue segment
- To collect comments from participants



LRT Workshop Session Schedule

www.edmonton.ca/LRTProjects

West LRT	
May 4, 2010	Lewis Estates to Meadowlark
May 6, 2010	Meadowlark to SPR/142 St.
May 12, 2010	SPR/149 St. to SPR/124 St.
May 13, 2010	Groat Road to Downtown

Southeast LRT	
May 18, 2010	Downtown to Strathearn
May 19, 2010	Strathearn to Whyte Ave
May 26, 2010	Bonnie Doon to Wagner
May 27, 2010	Wagner to Mill Woods

www.edmonton.ca/LRTProjects



Proposed Agenda

www.edmonton.ca/LRTProjects

- Welcome and Introductions
- Project Background
- Session #1: Right-of-way Alignment
- Session #2: Station Location and Configuration
- Session #3: Neighbourhood and Business Access
- Conclusion



Southeast LRT

Strathearn to Bonnie Doon

www.edmonton.ca/LRTProjects

Project Background



Where we are in the process?

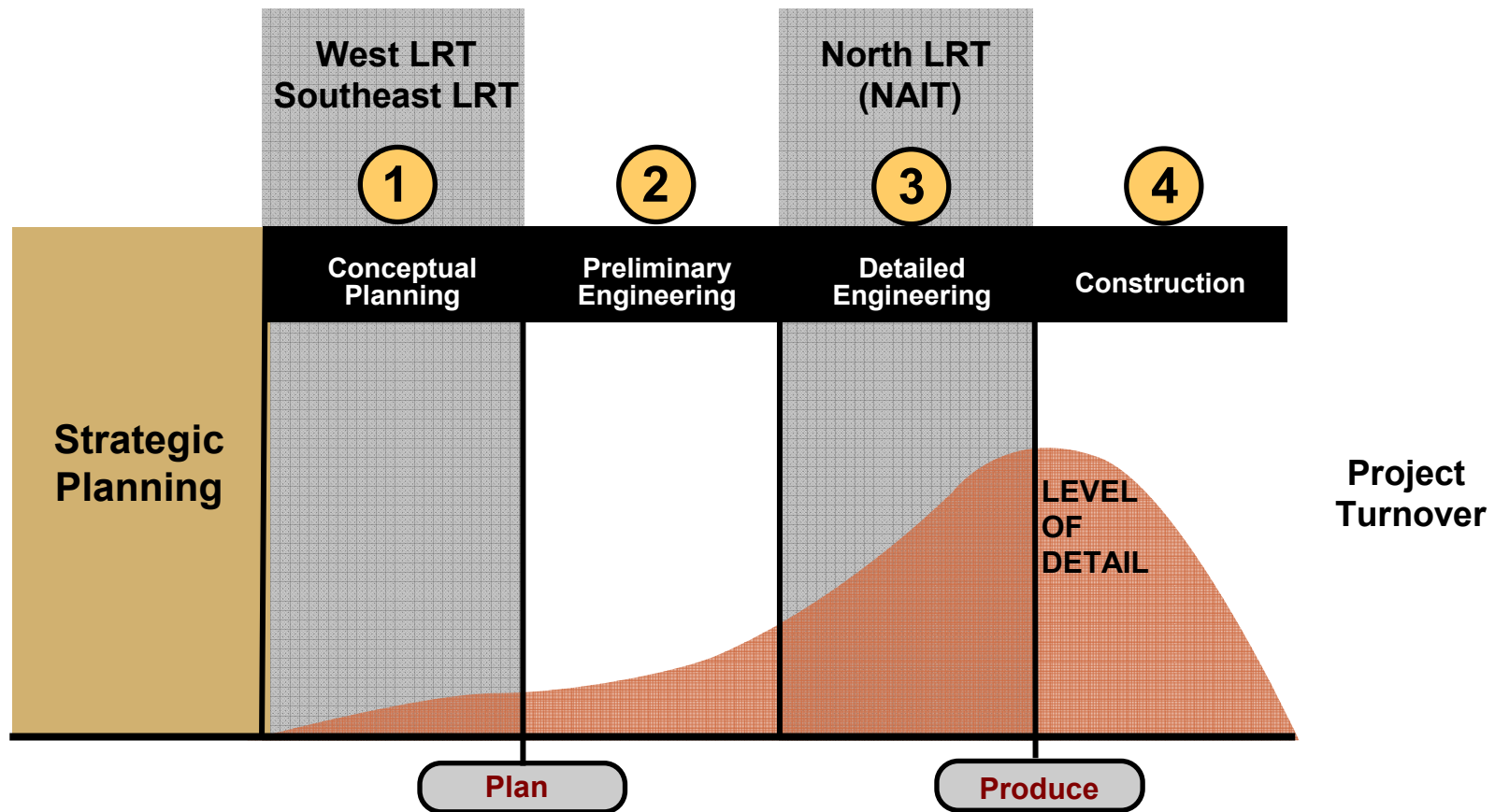
www.edmonton.ca/LRTProjects

Council approvals to date:

- LRT Network Plan (*June 2009*)
- Southeast LRT Corridor (*December 2009*)
- West LRT Corridor (*December 2009*)

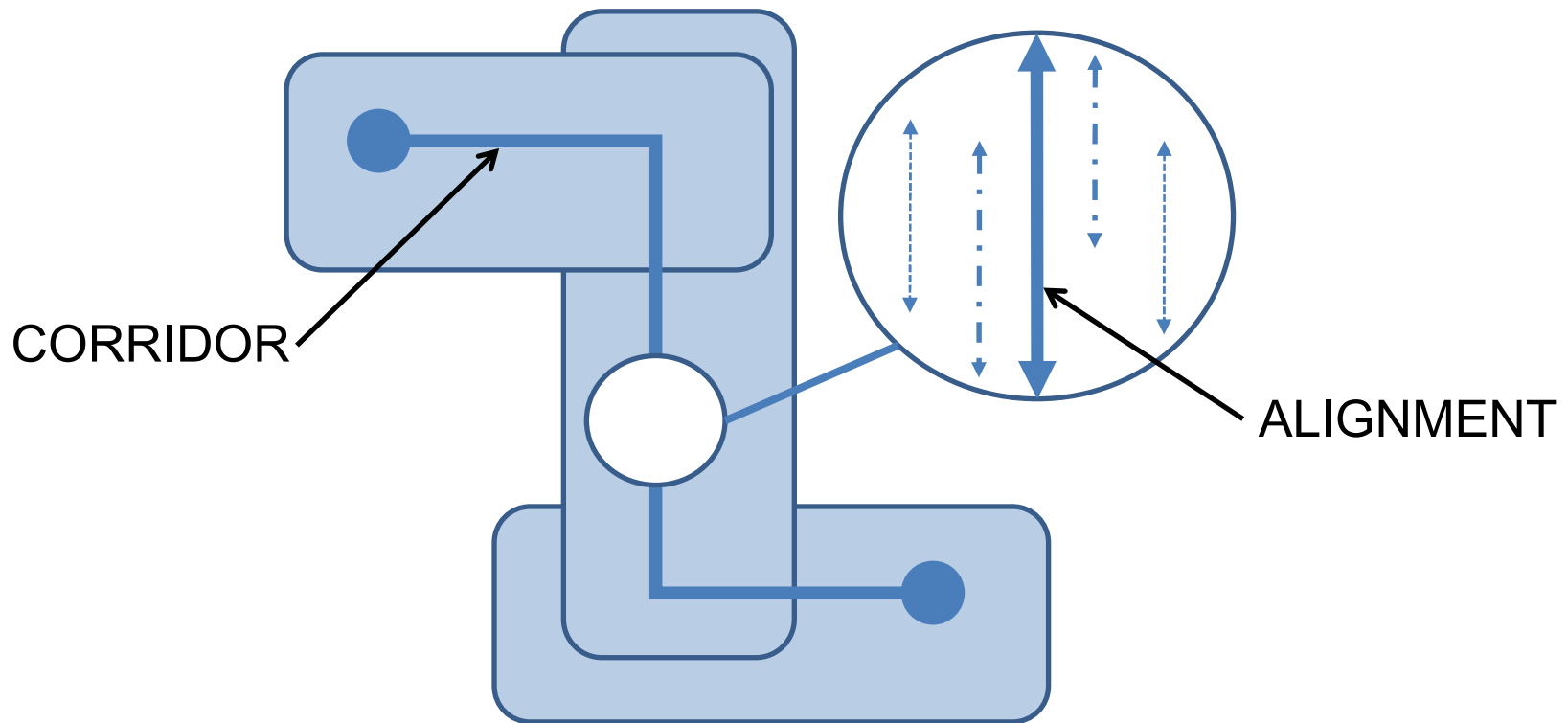
Where we are in the process?

www.edmonton.ca/LRTProjects



Corridor vs. Alignment

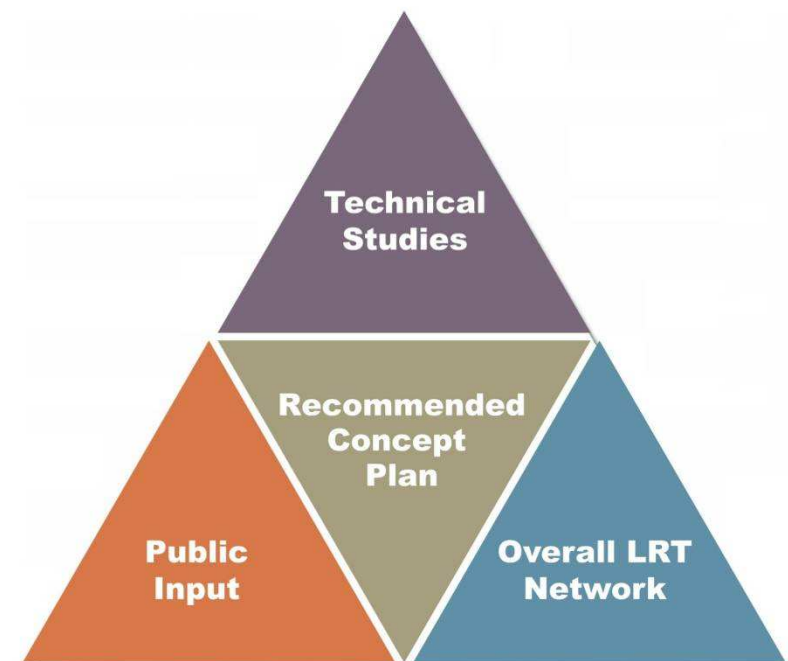
www.edmonton.ca/LRTProjects



Where we are in the process today?

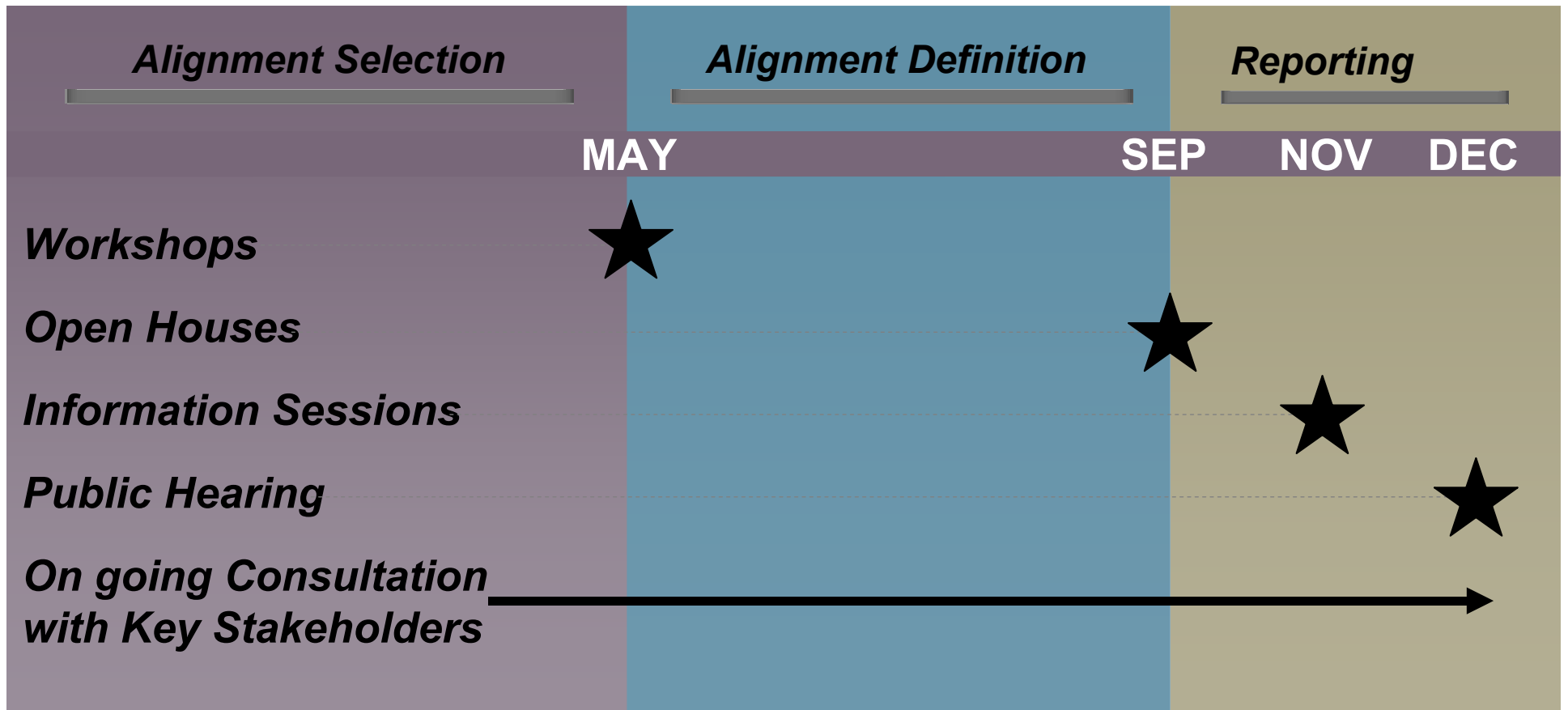
www.edmonton.ca/LRTProjects

- Presenting information (givens):
 - Grade Separations
 - Noise Study
 - Roadway Network
 - Safety
- Collecting participant comment/input (testing ideas):
 - Right-of-Way Alignment
 - Station Location
 - Neighbourhood and Business Access



Where are we going?

www.edmonton.ca/LRTProjects

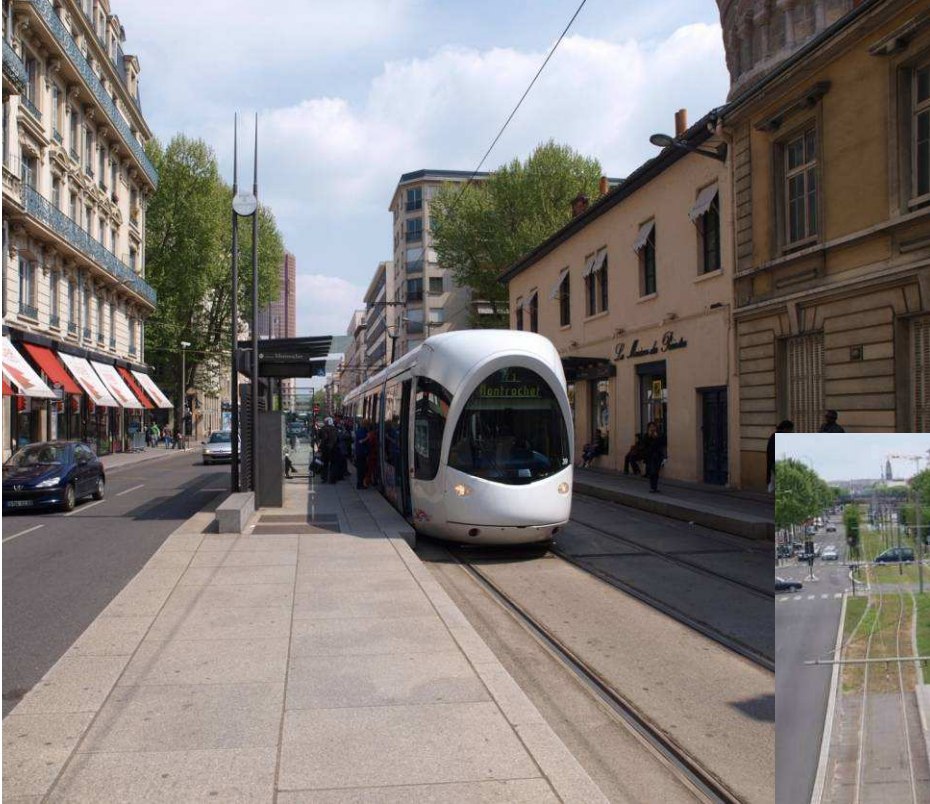


CH2MHILL

THE CITY OF
Edmonton

Urban Style LRT

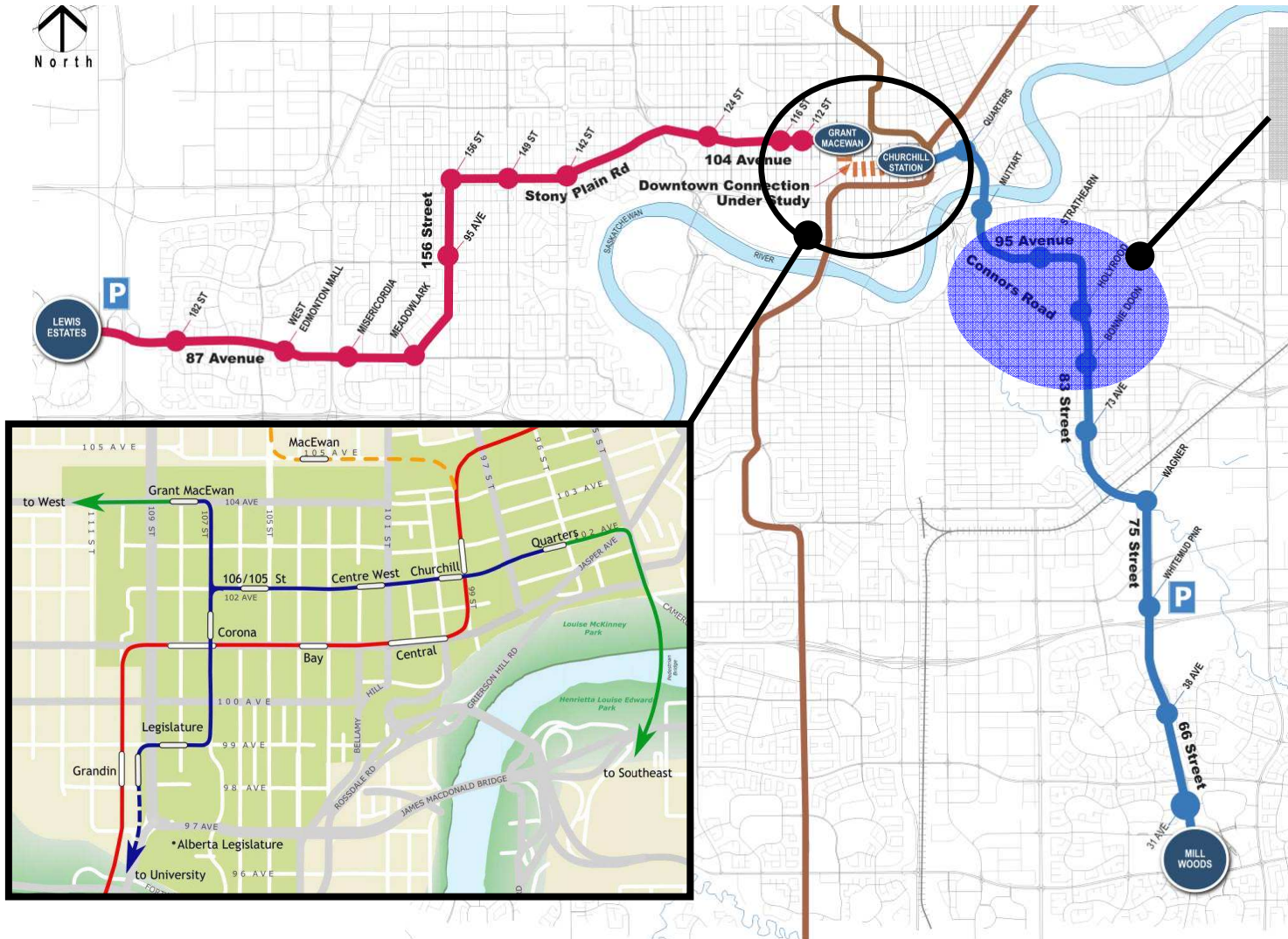
www.edmonton.ca/LRTProjects



CH2MHILL

Southeast and West LRT Corridors

www.edmonton.ca/LRTProjects

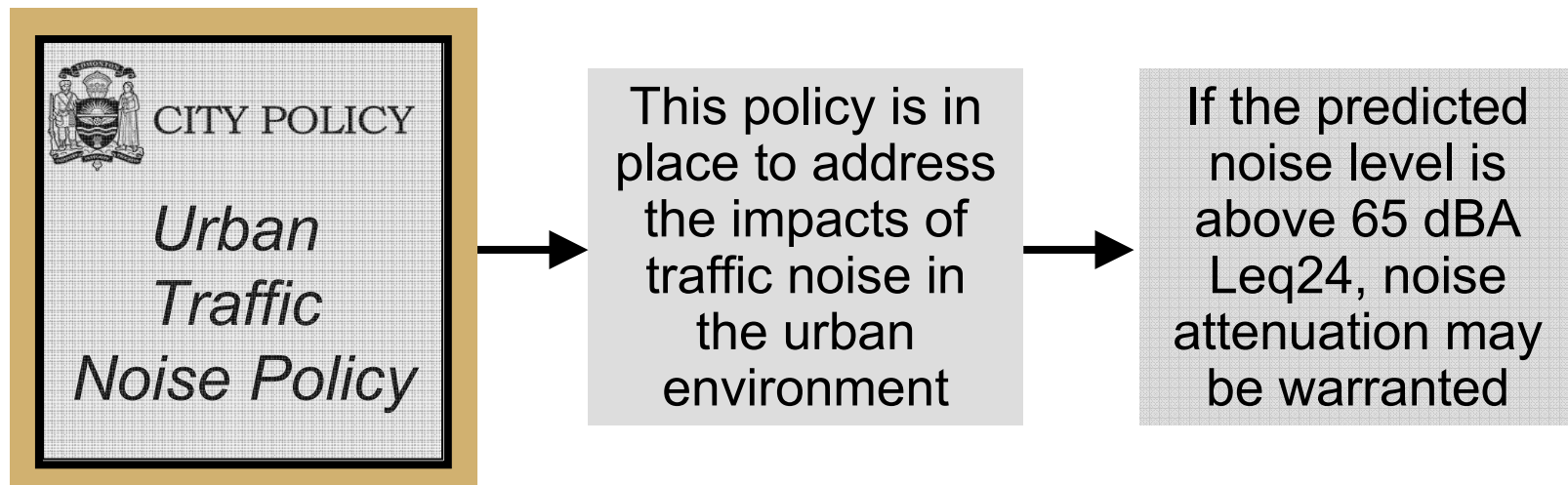


AREA WE ARE FOCUSING ON TONIGHT

LRT Noise Impact

www.edmonton.ca/LRTProjects

- LRT Noise Impact Study under way



Roadway Network

www.edmonton.ca/LRTProjects

- Connors Road
- Bonnie Doon Traffic Circle
- Reviewing key intersections



Connors Road / 95 Avenue



Bonnie Doon Traffic Circle



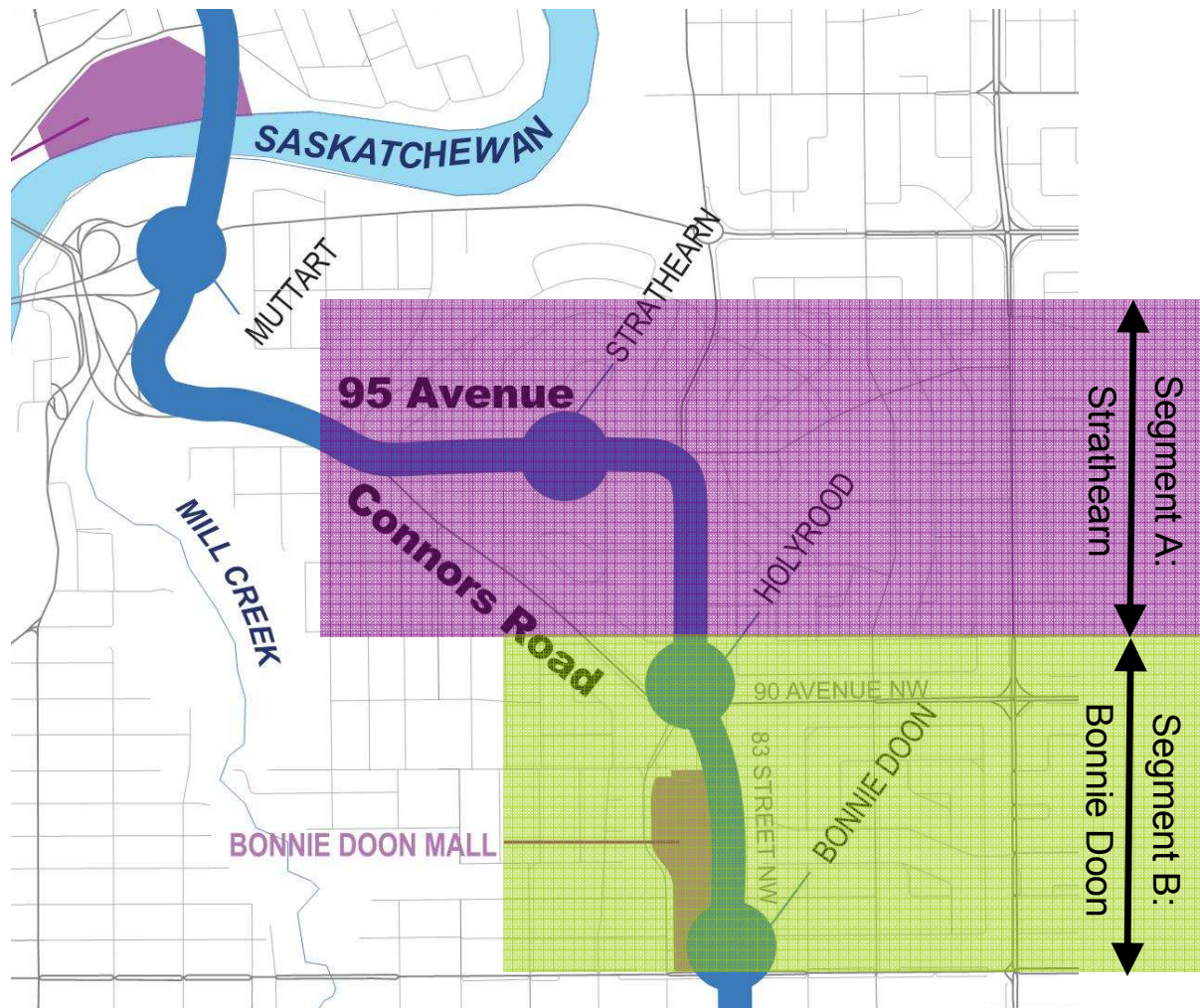
Workshop Session Overview

www.edmonton.ca/LRTProjects

- **Session #1:**
 - Right-of-way Alignment
- **Session #2:**
 - Station Location
- **Session #3:**
 - Neighbourhood and Business Access

Neighbourhood Groupings

www.edmonton.ca/LRTProjects





Southeast LRT
Strathearn to Bonnie Doon

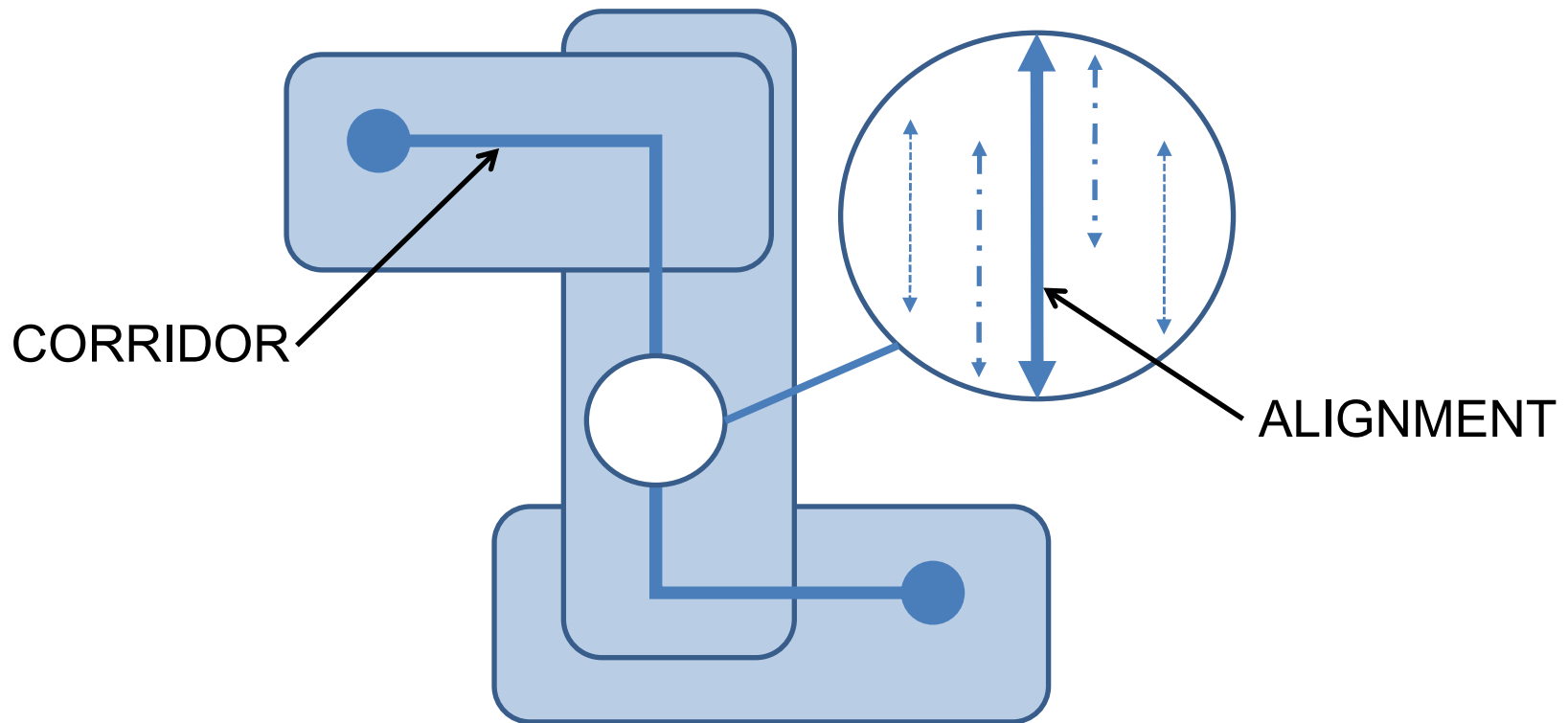
www.edmonton.ca/LRTProjects

Session #1

Right-of-Way (ROW) Alignment Alternatives

Corridor vs. Alignment

www.edmonton.ca/LRTProjects



Right-of-Way

www.edmonton.ca/LRTProjects

- There are impacts
- Constrained Right-of-Way
- Minimize property requirements by removing:
 - service roads
 - traffic lanes
 - on-street parking





ROW Alignment Options

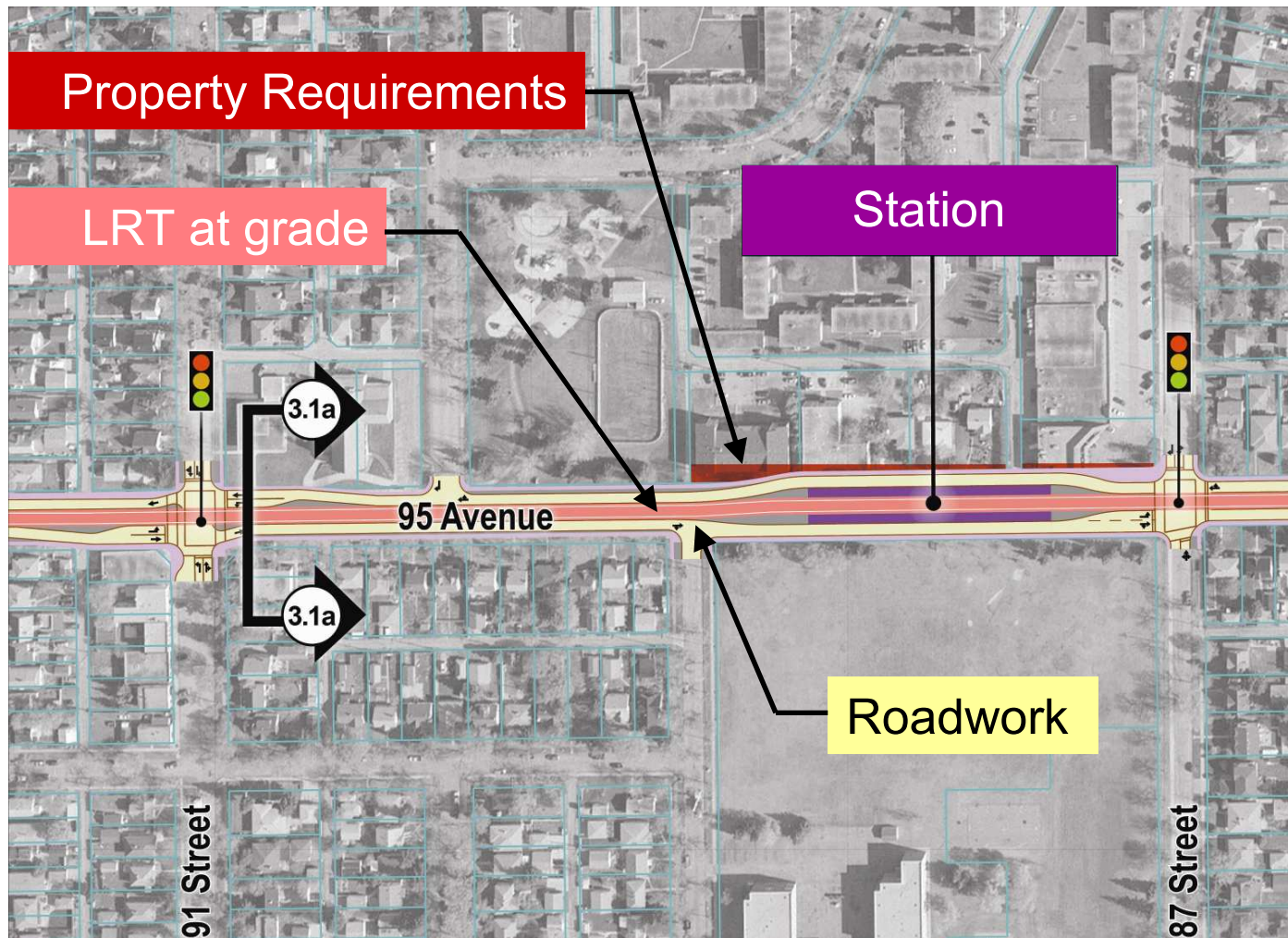
www.edmonton.ca/LRTProjects

Comment on your chosen section

– What needs to be considered for each alignment?

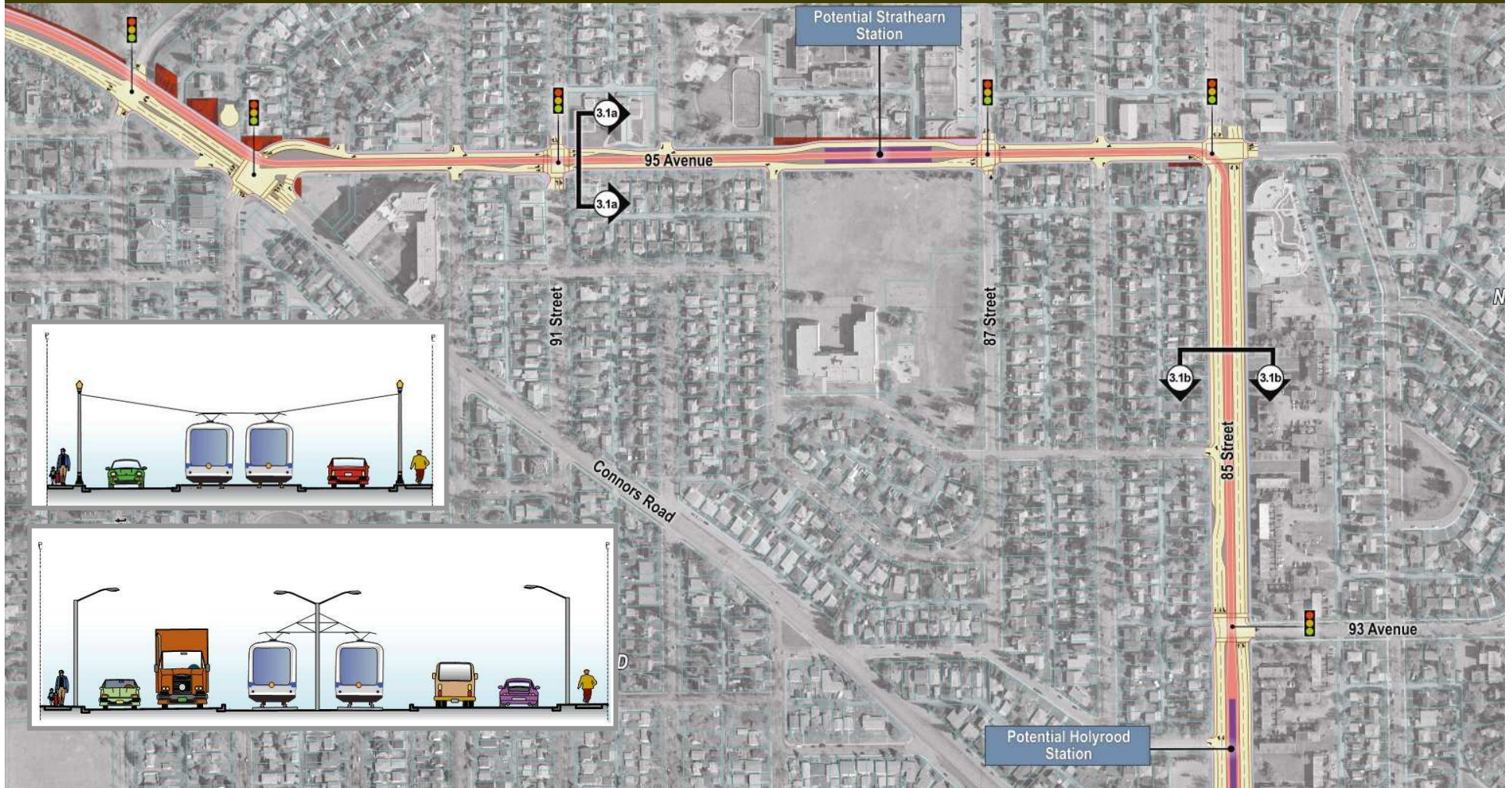
Legend / Key

www.edmonton.ca/LRTProjects



ROW Alignment - Segment A

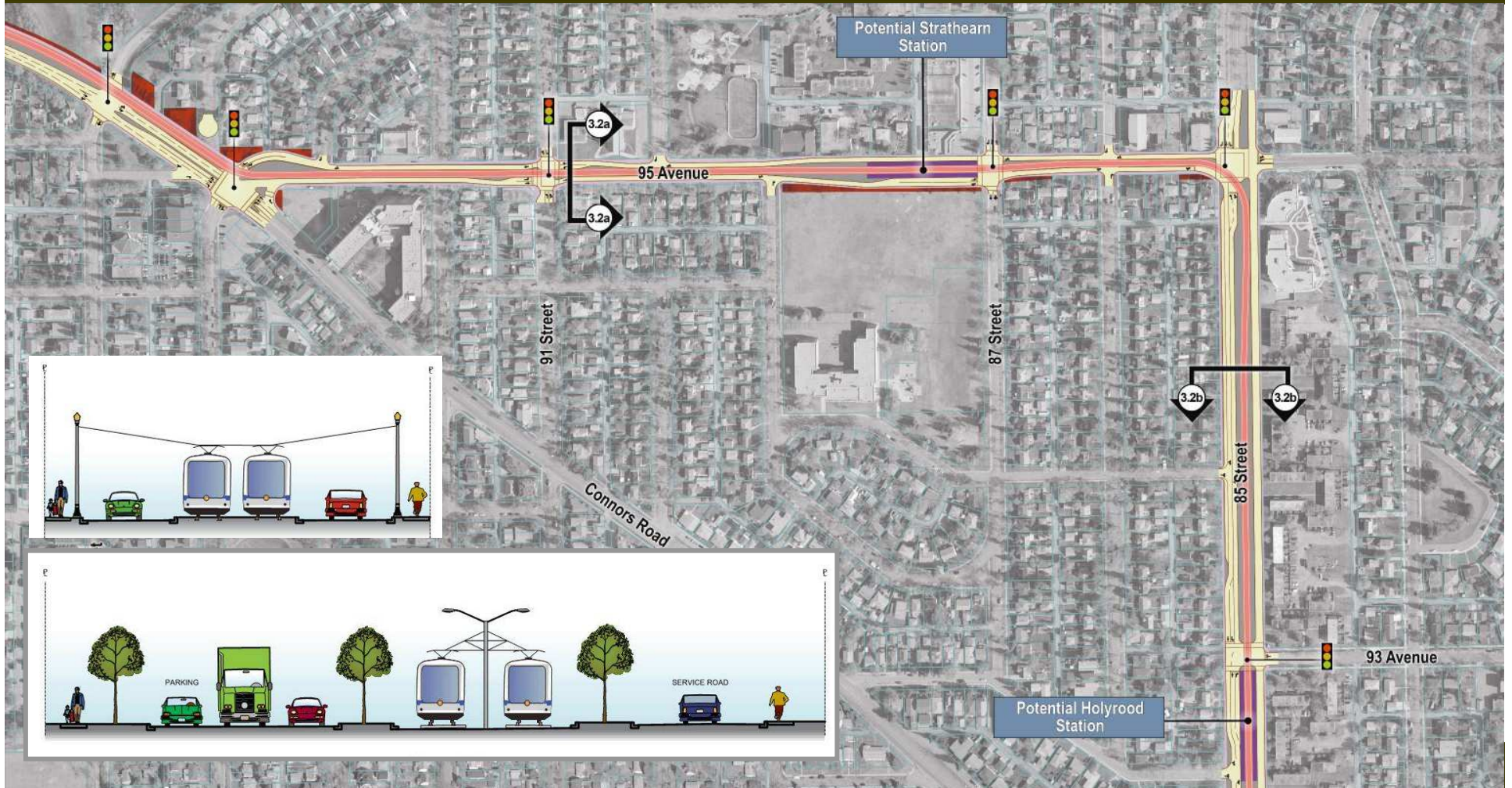
www.edmonton.ca/LRTProjects



ALTERNATIVE 1 - Centre Running LRT

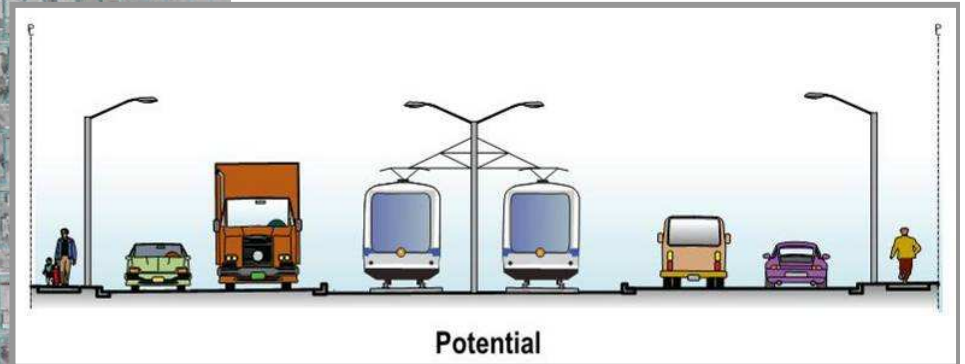
ROW Alignment - Segment A

www.edmonton.ca/LRTProjects



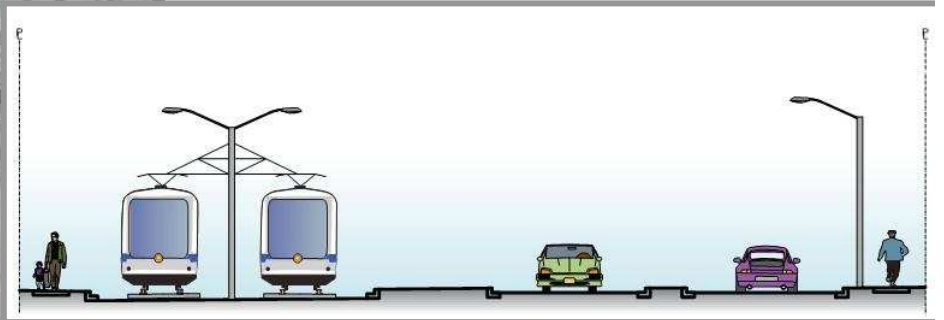
ALTERNATIVE 2 - Side Running LRT along 85 Street

ROW Alignment – Segment B



ALTERNATIVE 1 - Centre Running LRT – 4 lanes of traffic

ROW Alignment – Segment B



ALTERNATIVE 2 - Side Running LRT – 2 lanes of traffic

ROW Alignment - Segment B

www.edmonton.ca/LRTProjects



ALTERNATIVE 3 – Alternate Intersection Configuration



ROW Alignment – Workshop Question

www.edmonton.ca/LRTProjects

Comment on your chosen section

Given that the corridor has been defined and that we are only talking about the ROW alignment alternatives,

– What needs to be considered for each alignment?



Southeast LRT
Strathearn to Bonnie Doon

www.edmonton.ca/LRTProjects

Session #2

Station Location and Configuration



Station Location and Configuration Options

www.edmonton.ca/LRTProjects

Comment on your chosen section

– How does this station fit into your neighbourhood?

*How does it affect your travel patterns?
(pedestrian, cyclist, or driver)*

Simple Stop Design

www.edmonton.ca/LRTProjects

Low floor vehicles and platforms provide:

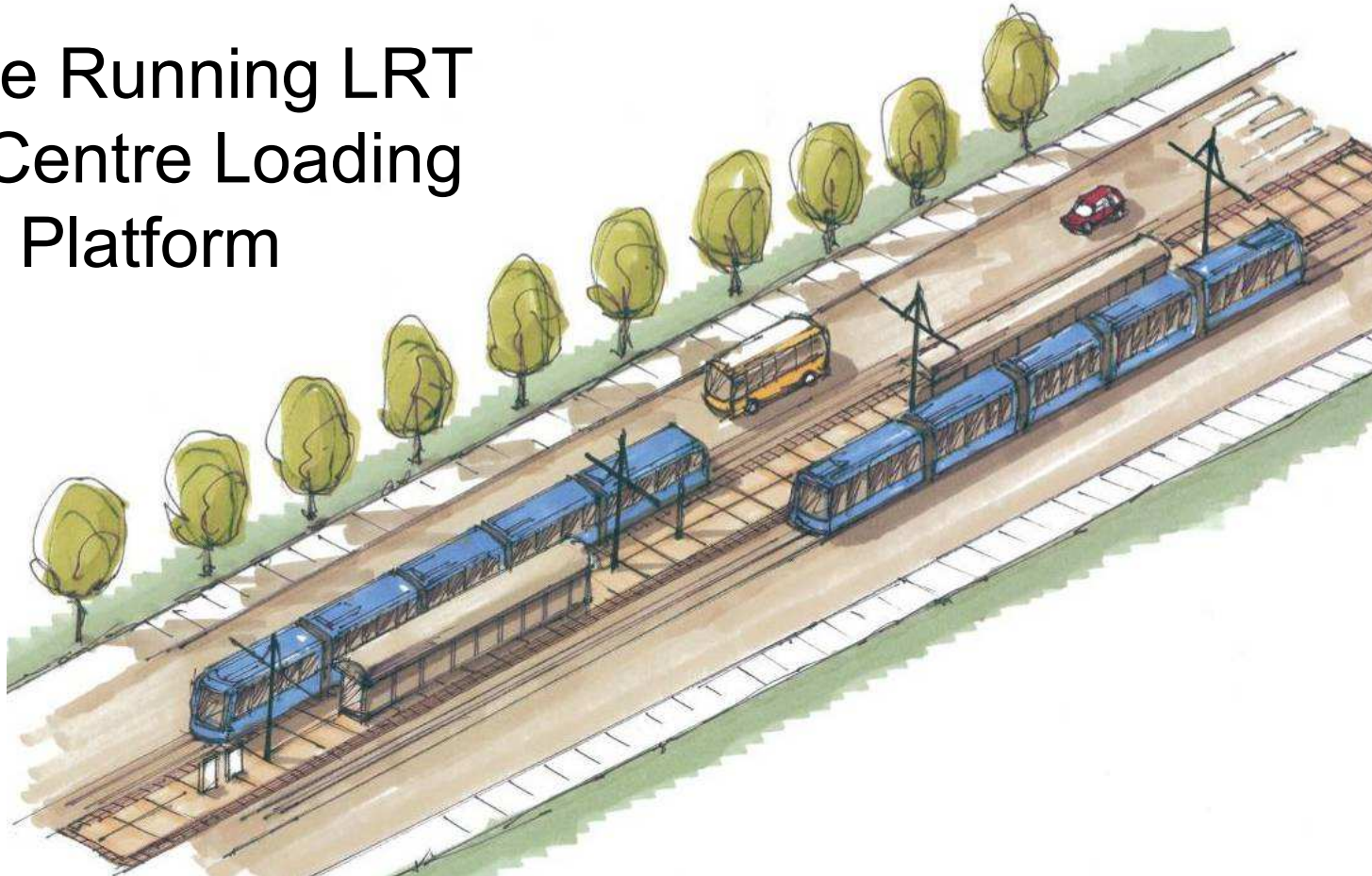
- Simple Infrastructure
- Fits into surrounding areas
- Improved neighbourhood connections



Station Configuration

www.edmonton.ca/LRTProjects

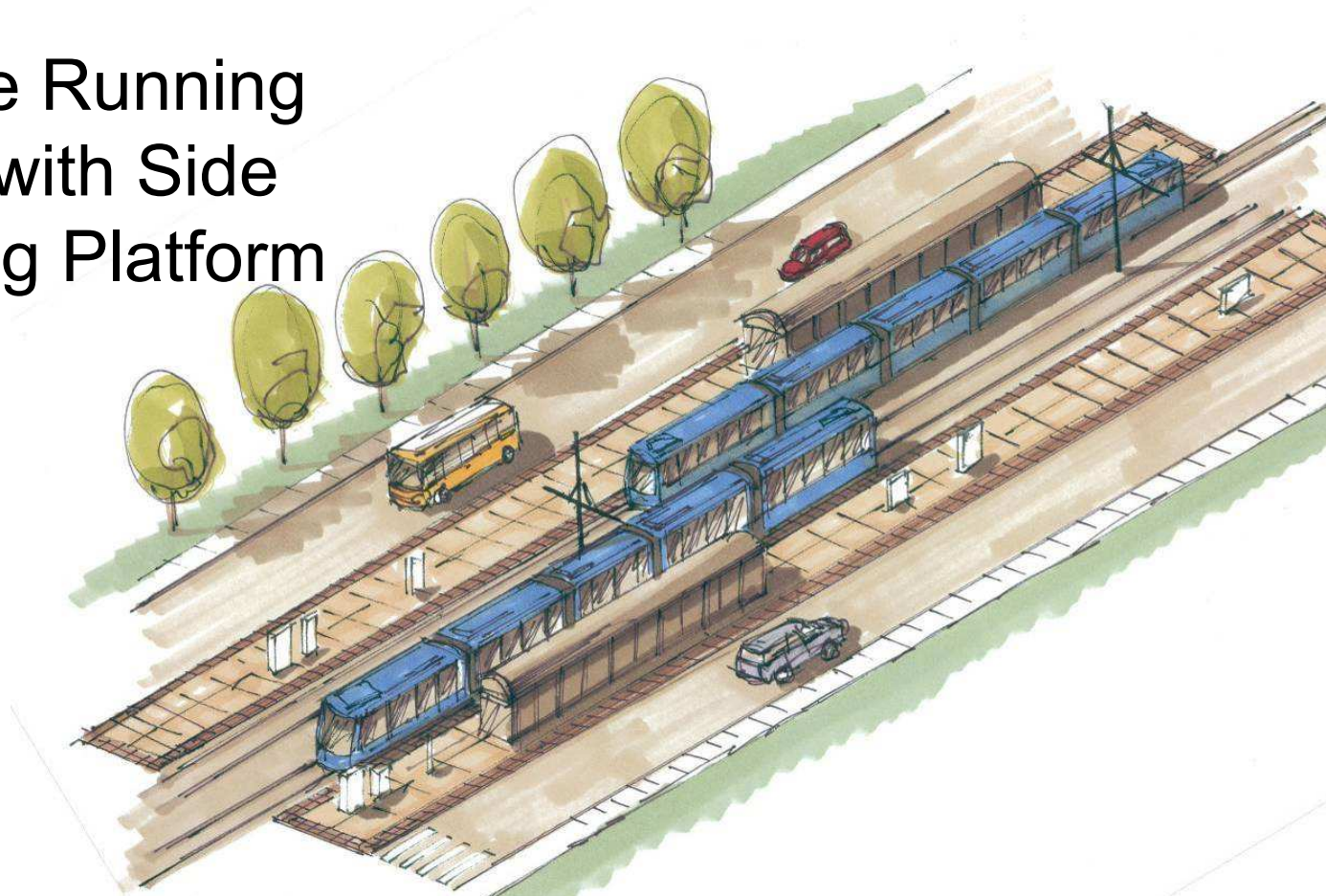
Centre Running LRT
with Centre Loading
Platform



Station Configuration

www.edmonton.ca/LRTProjects

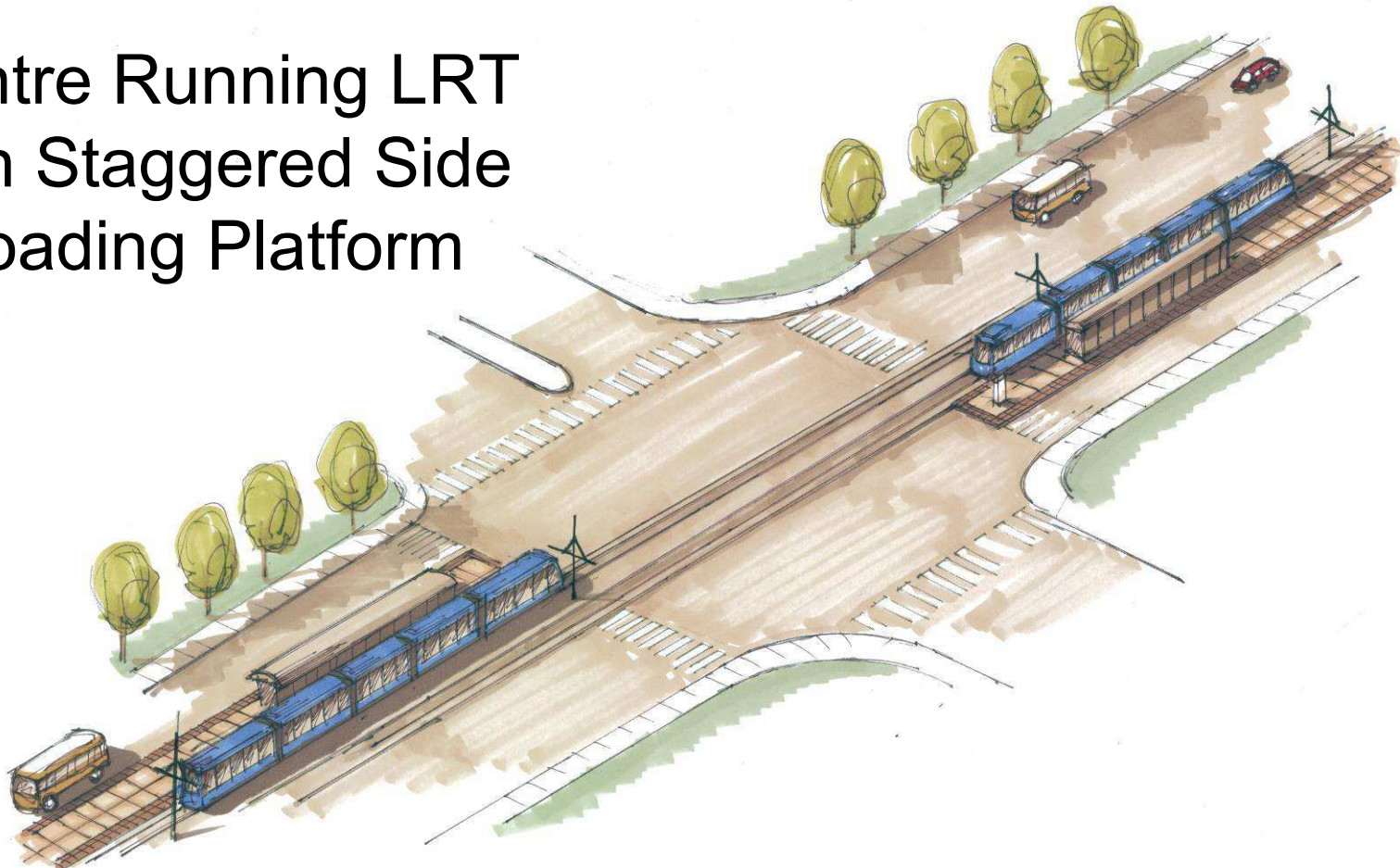
Centre Running
LRT with Side
Loading Platform



Station Configuration

www.edmonton.ca/LRTProjects

Centre Running LRT
with Staggered Side
Loading Platform



Overview Station Alternatives

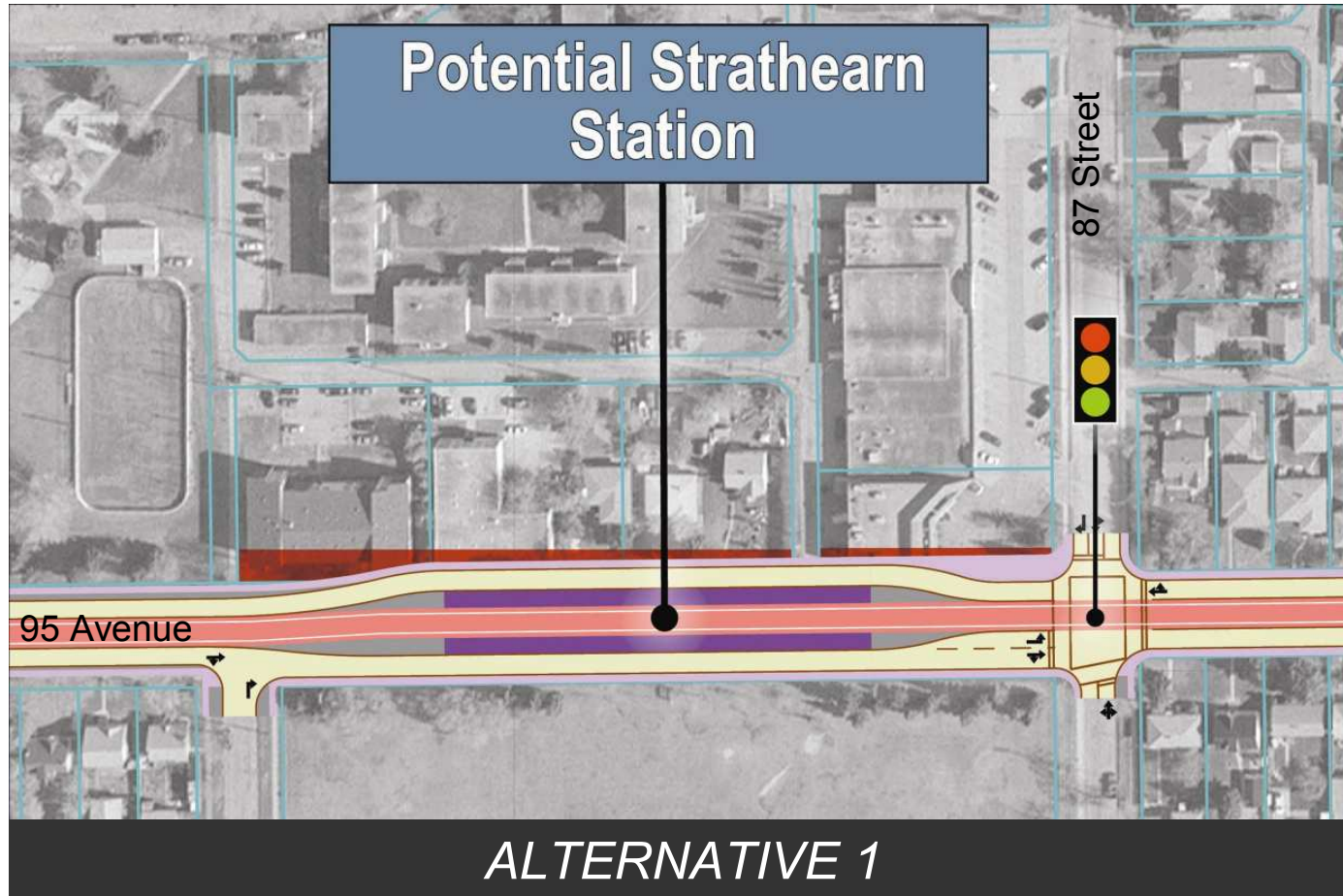
www.edmonton.ca/LRTProjects

- Overview of station alternatives at:
 - Strathearn Station
 - Holyrood Station
 - Bonnie Doon Station



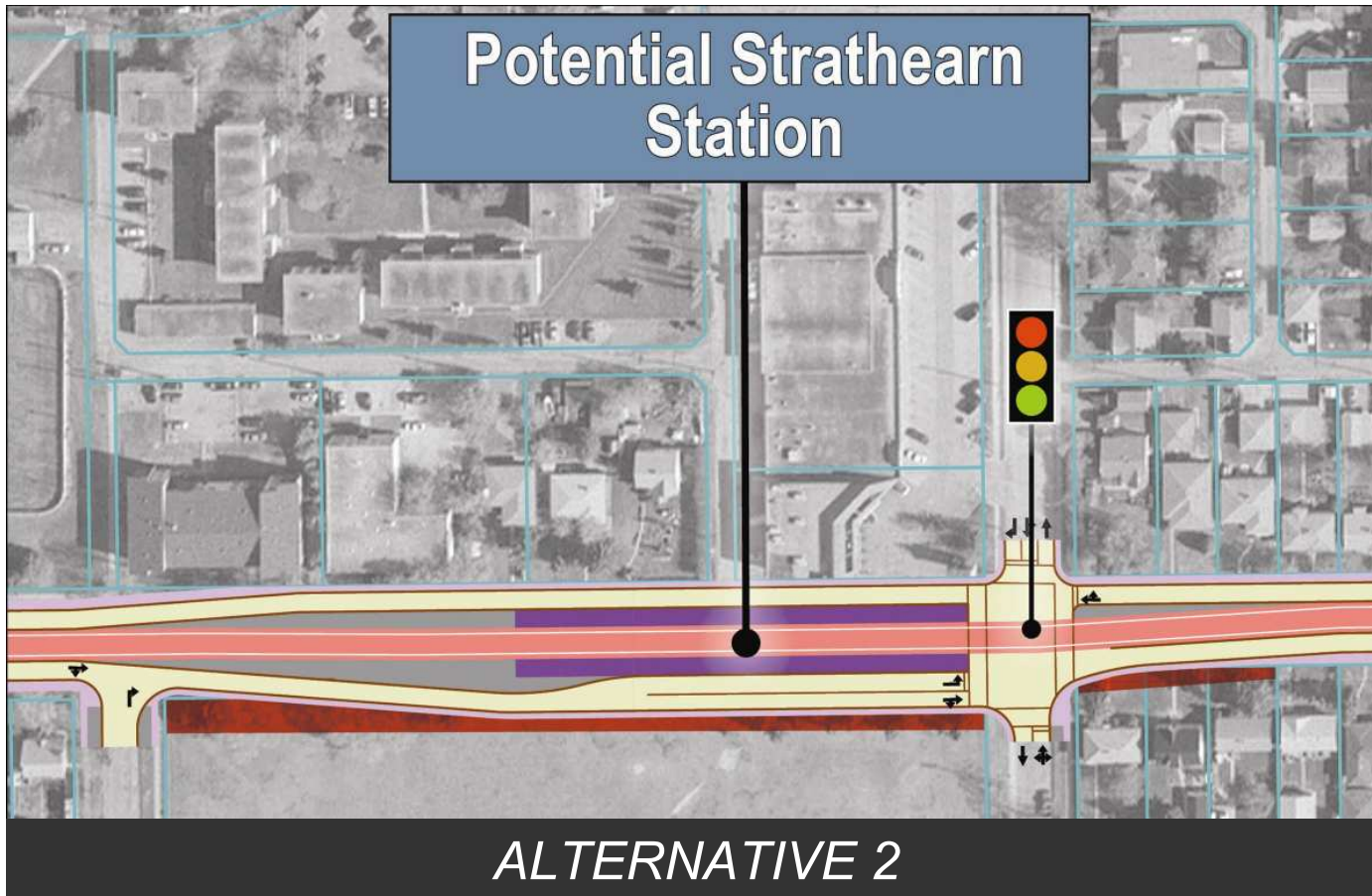
Strathearn Station

www.edmonton.ca/LRTProjects



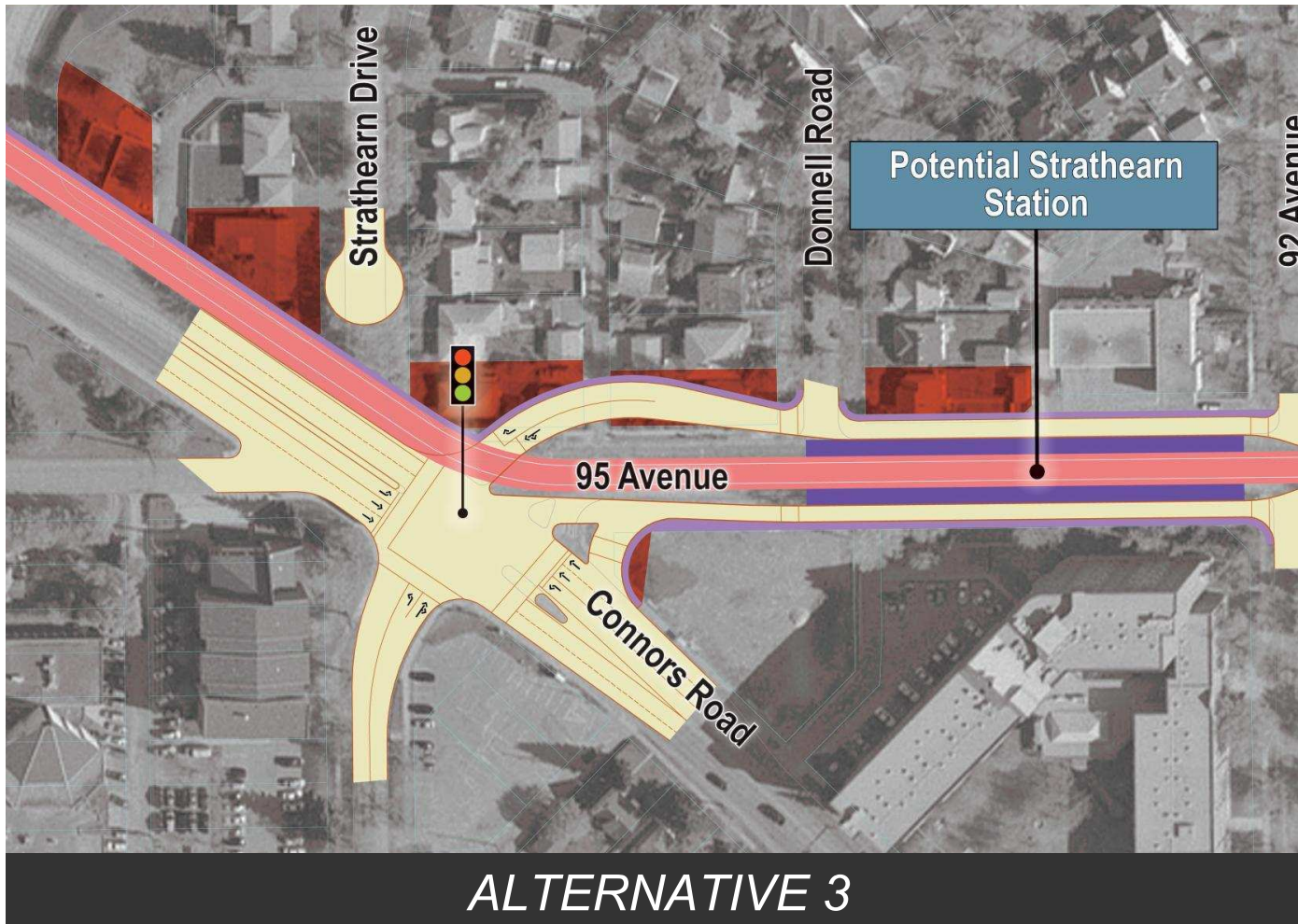
Strathearn Station

www.edmonton.ca/LRTProjects



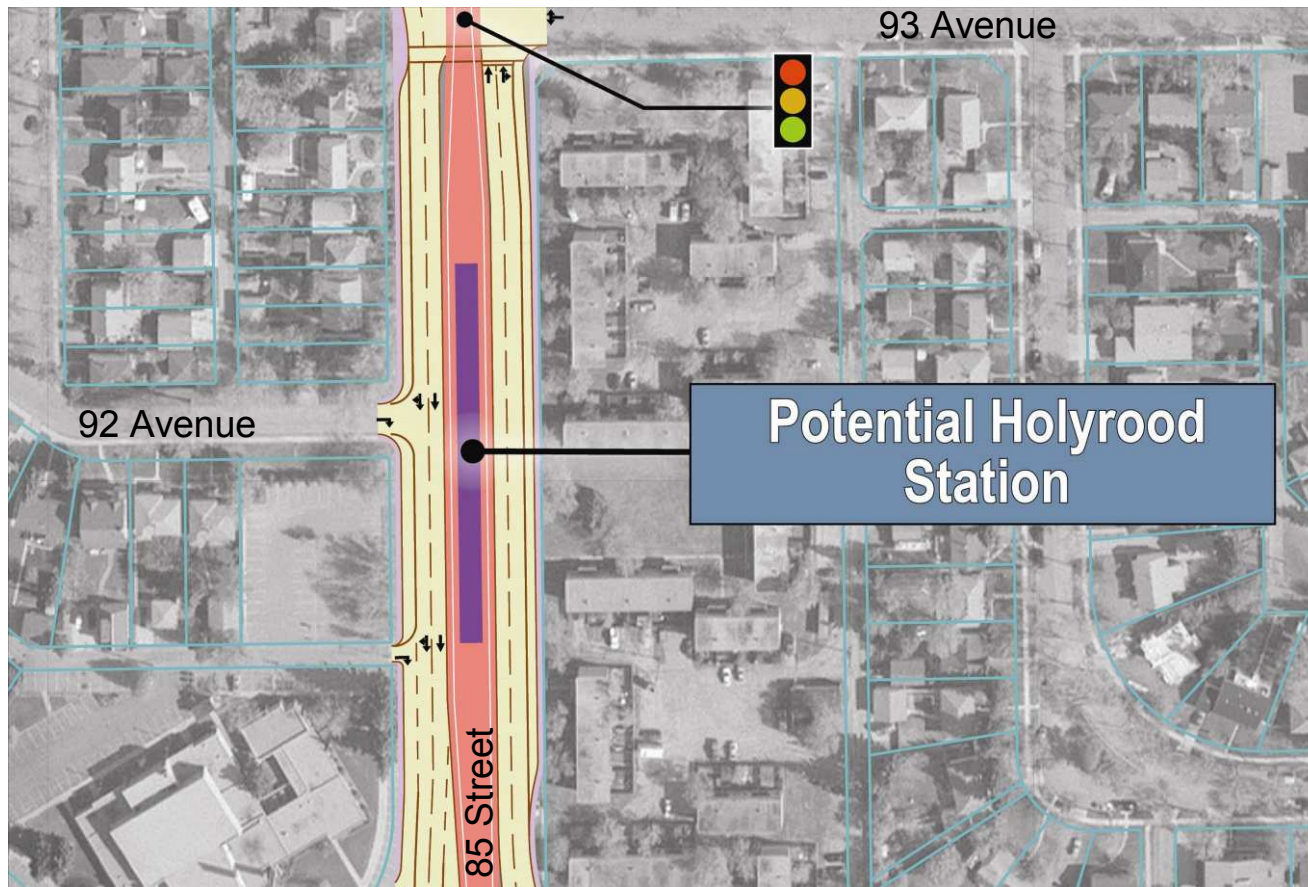
Strathearn Station

www.edmonton.ca/LRTProjects



Holyrood Station

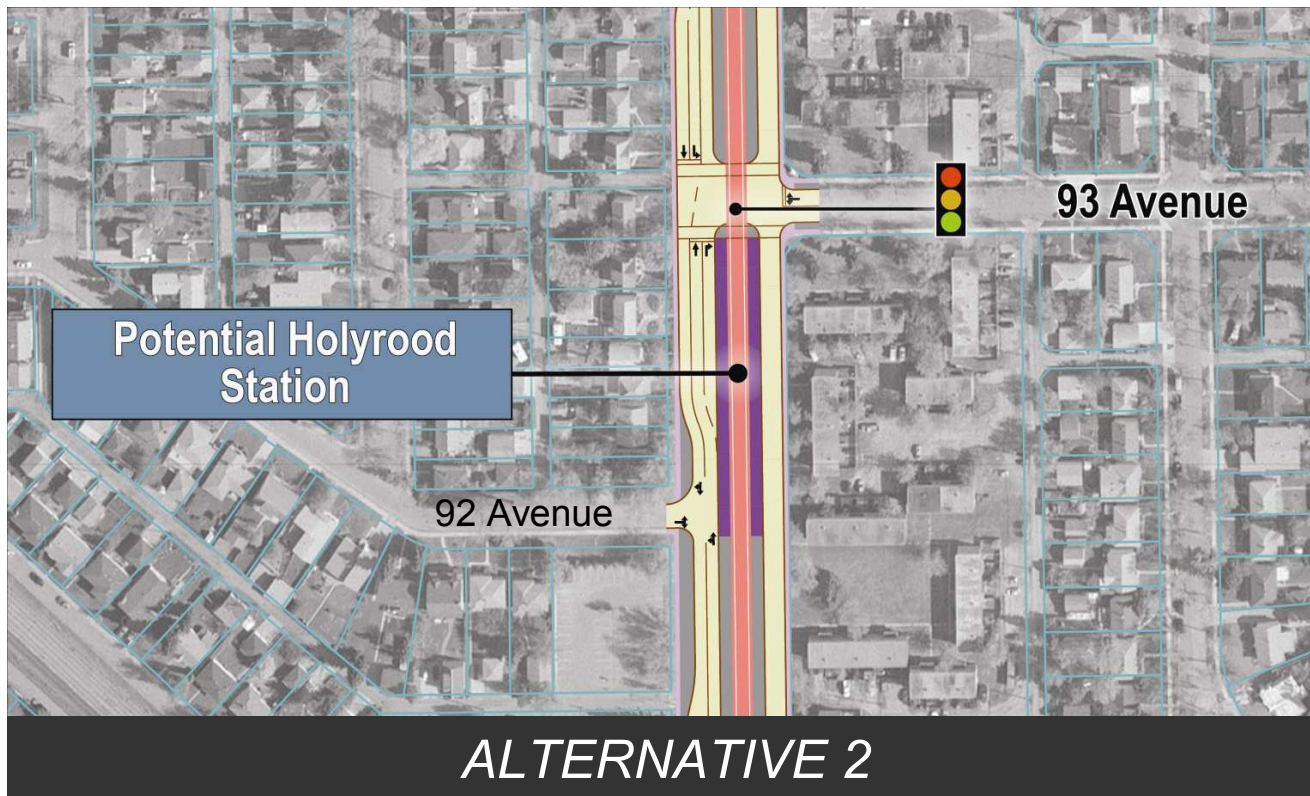
www.edmonton.ca/LRTProjects



ALTERNATIVE 1

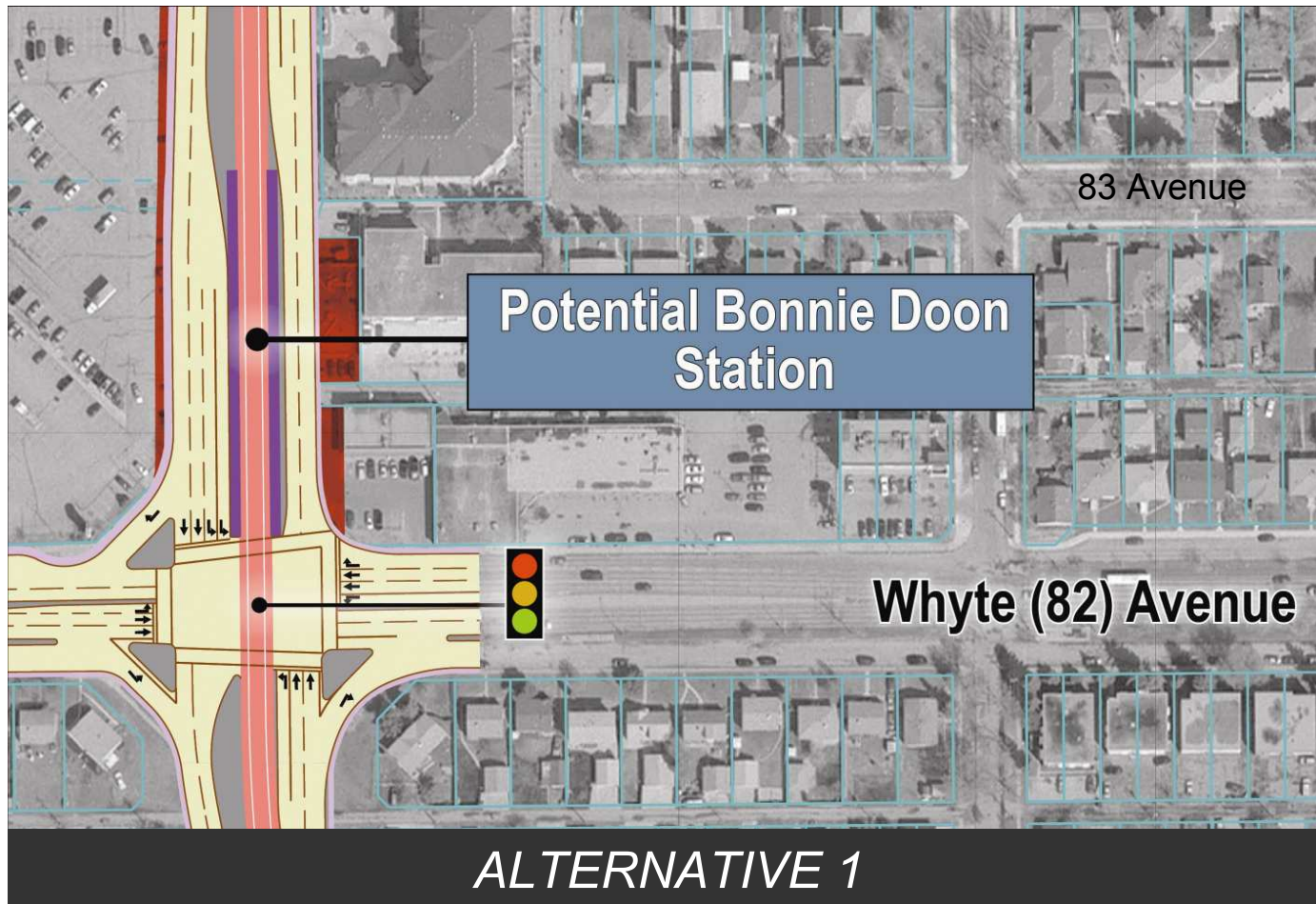
Holyrood Station

www.edmonton.ca/LRTProjects



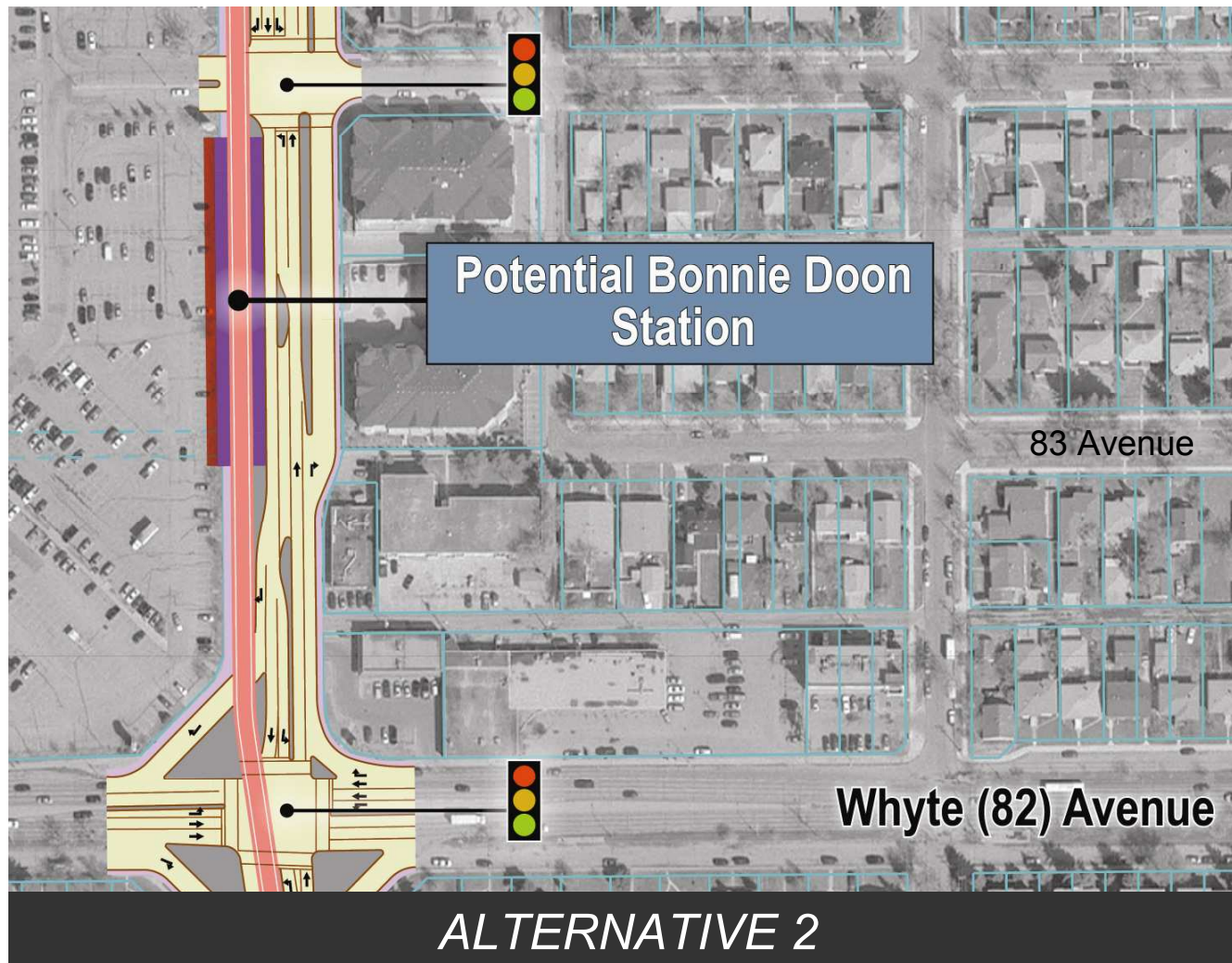
Bonnie Doon Station

www.edmonton.ca/LRTProjects



Bonnie Doon Station

www.edmonton.ca/LRTProjects





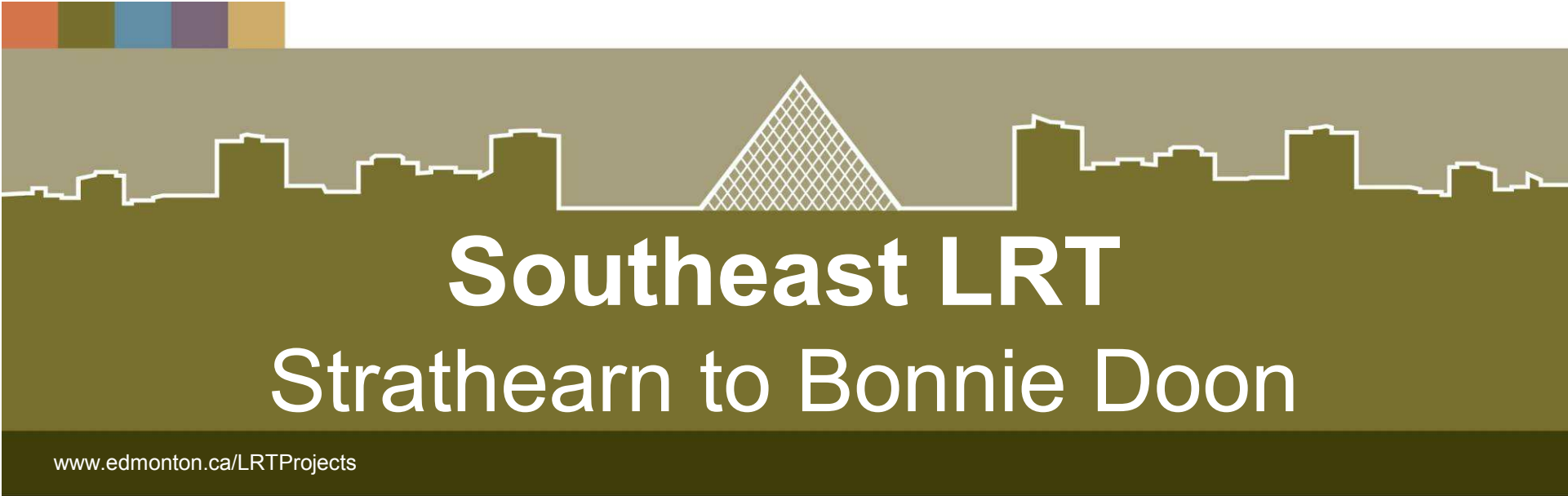
Stations - Workshop Questions

www.edmonton.ca/LRTProjects

Comment on the station in your neighbourhood

– How does this station fit into your neighbourhood?

*How does it affect your travel patterns?
(pedestrian, cyclist, or driver)*



Southeast LRT
Strathearn to Bonnie Doon

www.edmonton.ca/LRTProjects

Break



Southeast LRT
Strathearn to Bonnie Doon

www.edmonton.ca/LRTProjects

Session #3

Neighbourhood and Business Access



Neighbourhood and Business Access

www.edmonton.ca/LRTProjects

Comment on your chosen section

- *How do the alternatives affect the way you get around and in/out of your neighbourhood and access businesses?*

Neighbourhood and Business Access

www.edmonton.ca/LRTProjects

Basic Principles of Neighbourhood Access:

- Different roads serve different purposes
- LRT will change direct access to roads within its corridor
- Traffic signals will be located on major roads to facilitate LRT movement



Neighbourhood and Business Access

www.edmonton.ca/LRTProjects

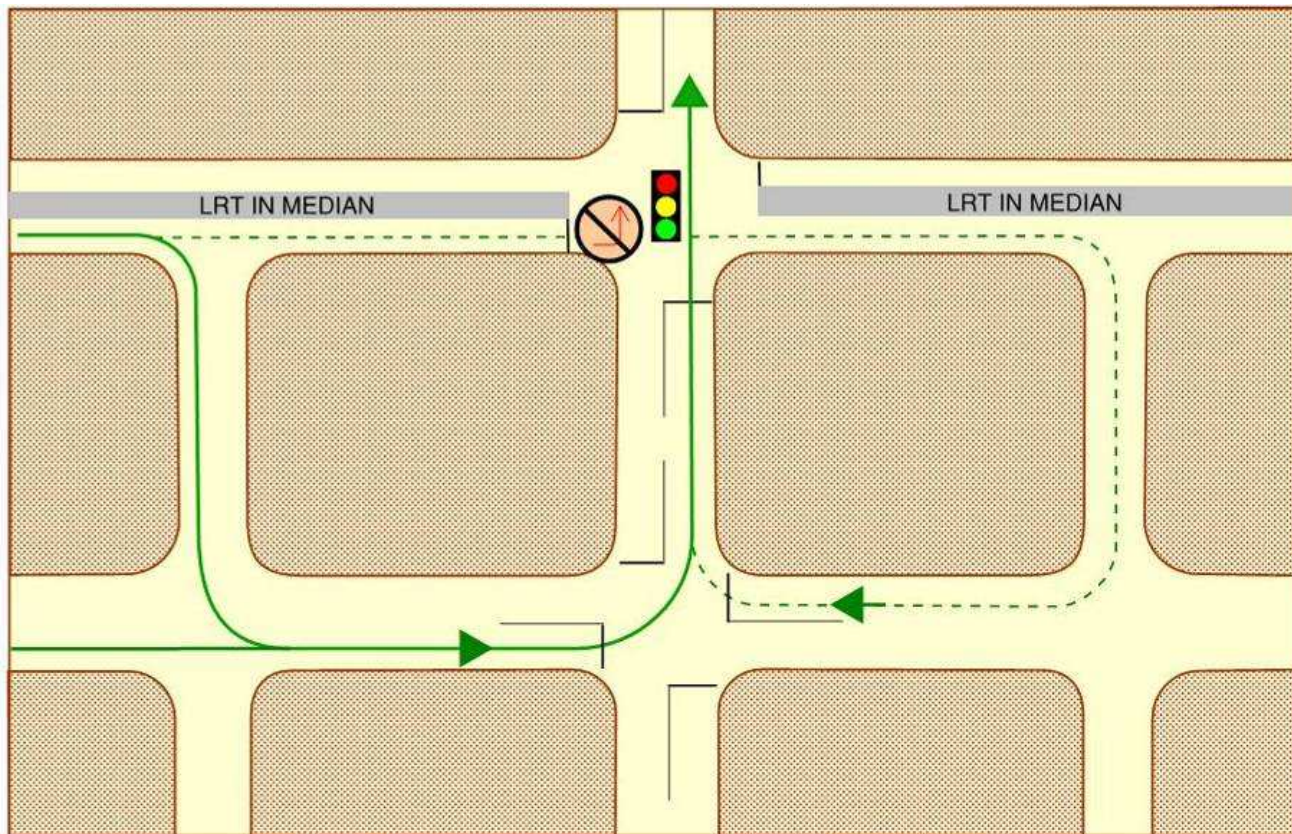
Basic Principles of Neighbourhood Access:

- Turns across LRT tracks will be at signalized intersections
- Not ALL signalized intersections will allow left hand turns
- A supporting street and circulation system will be provided



Neighbourhood and Business Access

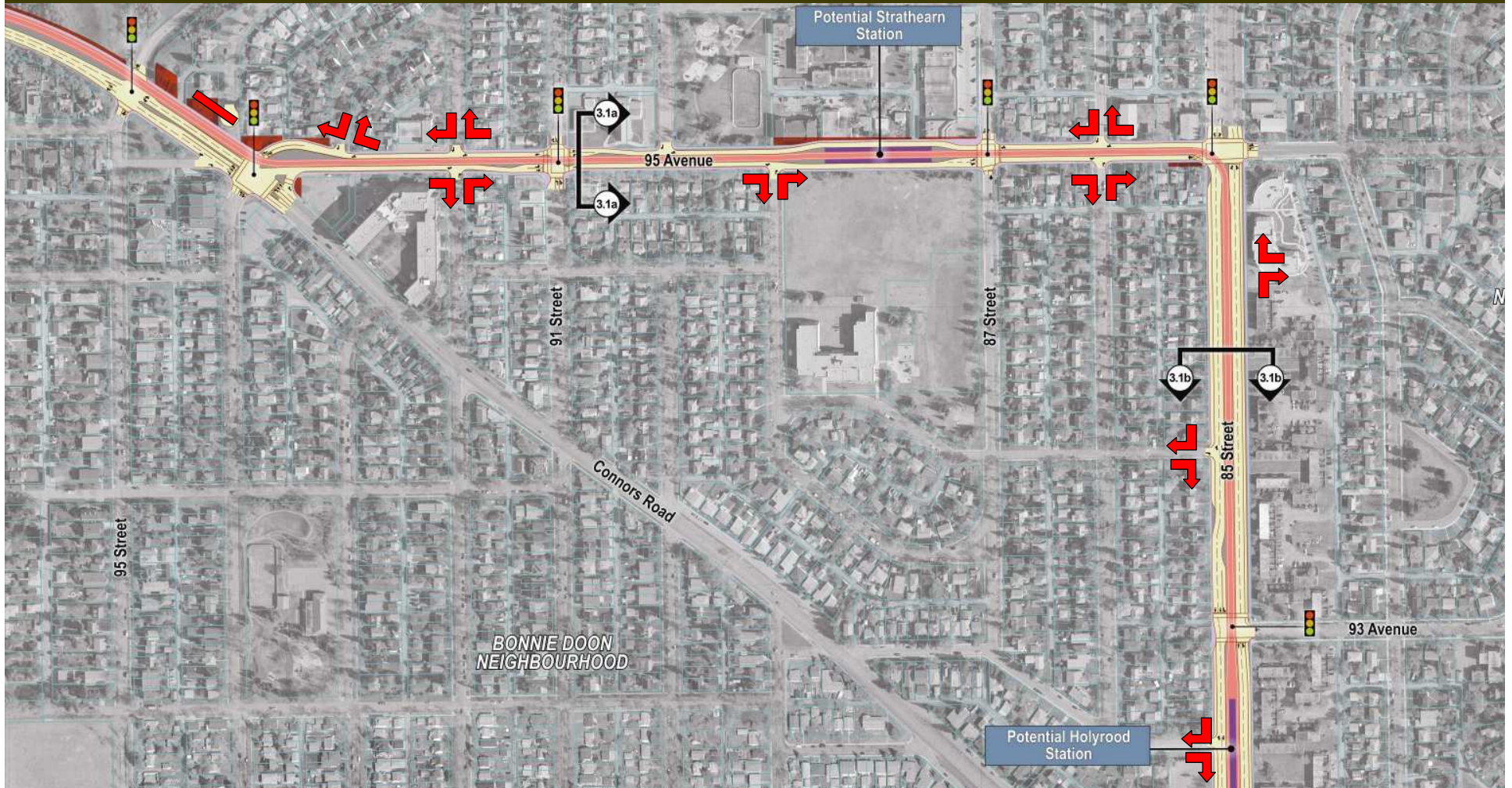
www.edmonton.ca/LRTProjects



- Existing left turn movement at intersection removed
- Future jug-handle movements provided

Neighbourhood and Business Access – Segment A

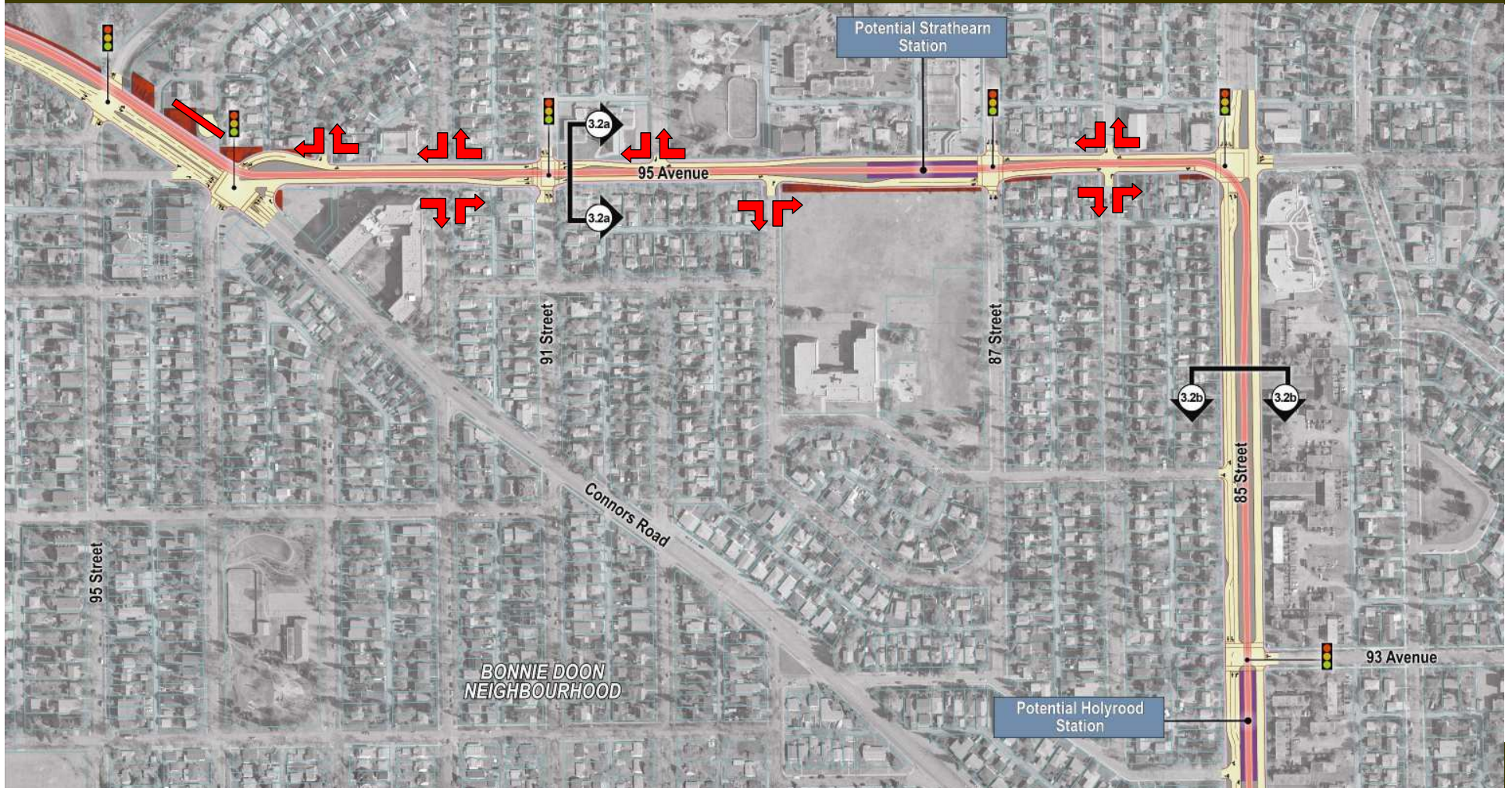
www.edmonton.ca/LRTProjects



ALTERNATIVE 1 - Centre Running LRT

Neighbourhood and Business Access – Segment A

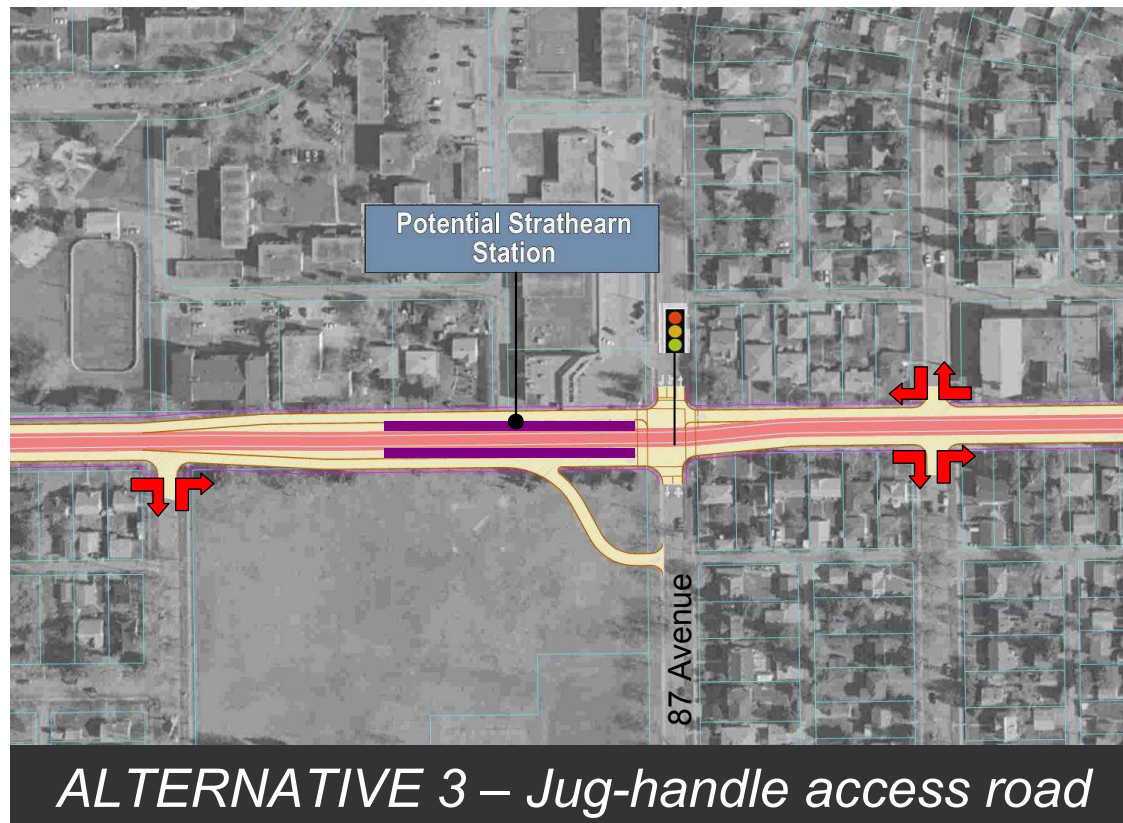
www.edmonton.ca/LRTProjects



ALTERNATIVE 2 - Side Running LRT along 85 Street

Neighbourhood and Business Access – Segment A

www.edmonton.ca/LRTProjects

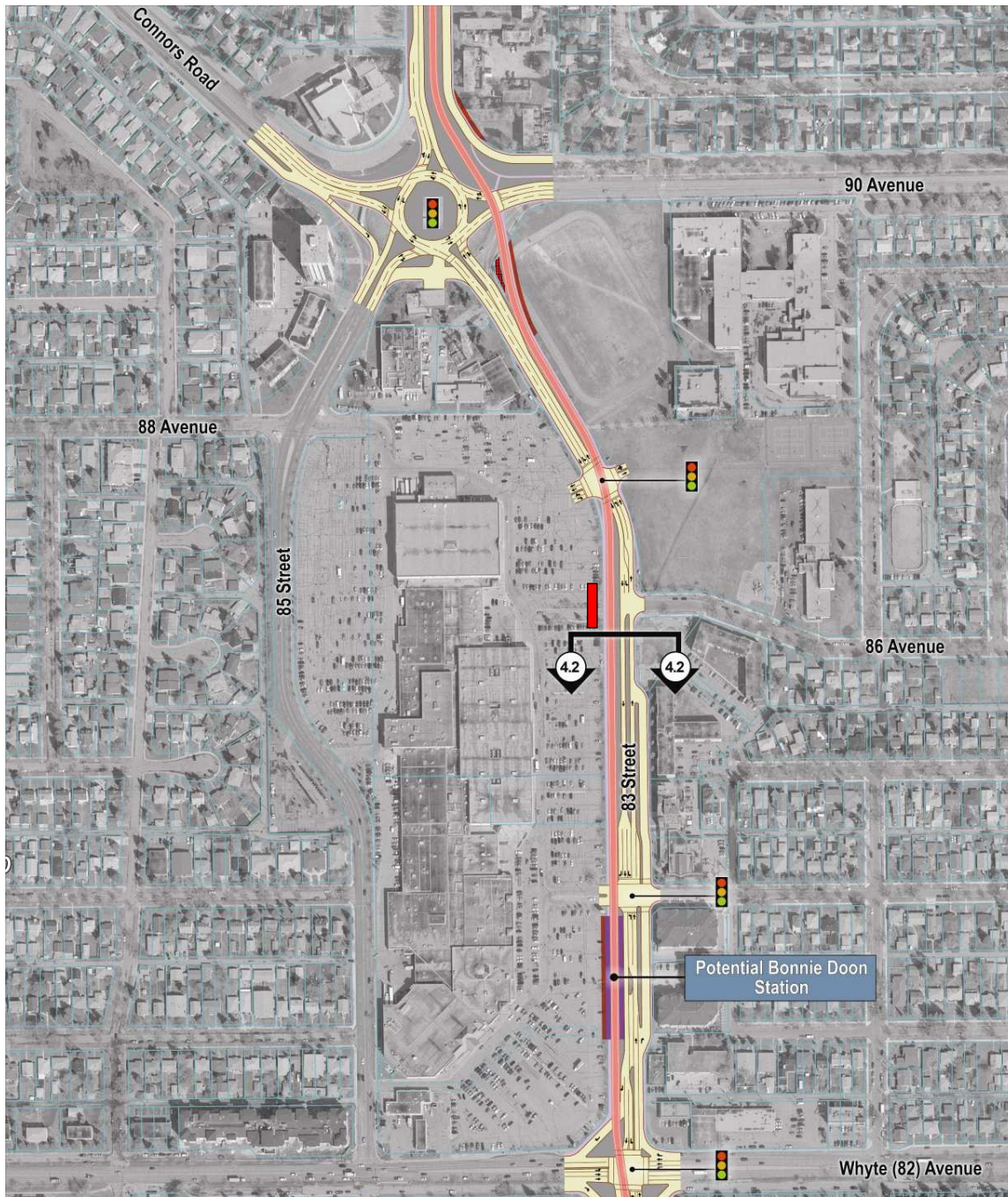


Neighbourhood and Business Access – Segment B



ALTERNATIVE 1 - Centre Running LRT – 4 lanes of traffic

Neighbourhood and Business Access – Segment B



ALTERNATIVE 2 - Side Running LRT – 2 lanes of traffic



Neighbourhood and Business Access – Workshop Questions

www.edmonton.ca/LRTProjects

Comment on your chosen section

– How do the alternatives affect the way you get around and in/out of your neighbourhood and access businesses?



Wrap Up

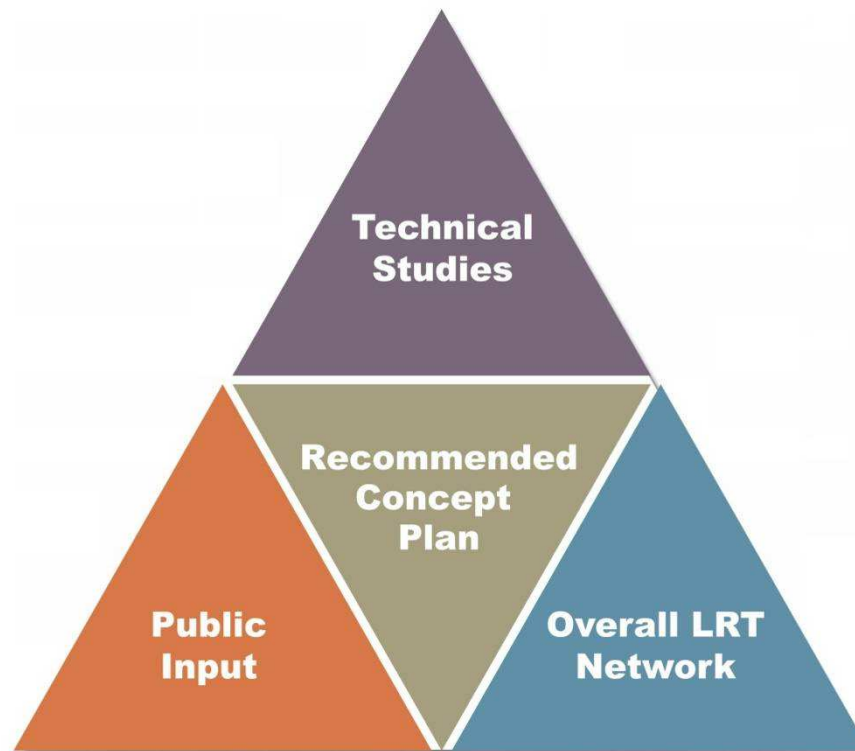
www.edmonton.ca/LRTProjects

- Fill out Questionnaires
- Attend other workshops
- Presentation available on website

www.edmonton.ca/LRTProjects

Wrap Up

www.edmonton.ca/LRTProjects





LRT Workshop Session Schedule

www.edmonton.ca/LRTProjects

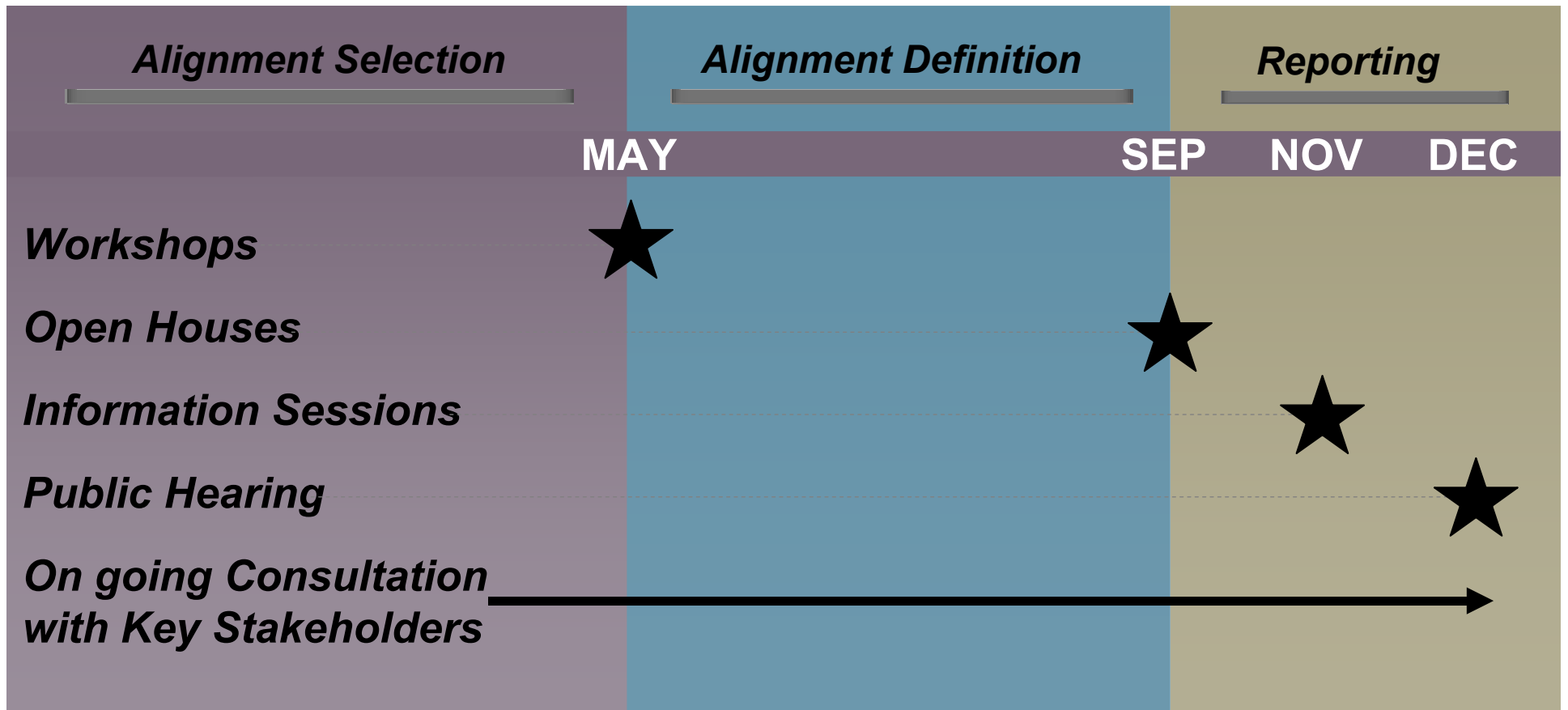
West LRT	
May 4, 2010	Lewis Estates to Meadowlark
May 6, 2010	Meadowlark to SPR/142 St.
May 12, 2010	SPR/149 St. to SPR/124 St.
May 13, 2010	Groat Road to Downtown

Southeast LRT	
May 18, 2010	Downtown to Strathearn
May 19, 2010	Strathearn to Whyte Ave
May 26, 2010	Bonnie Doon to Wagner
May 27, 2010	Wagner to Mill Woods

www.edmonton.ca/LRTProjects

Next Steps

www.edmonton.ca/LRTProjects





Southeast LRT

Strathearn to Bonnie Doon

www.edmonton.ca/LRTProjects

Thank you!

CH2MHILL

THE CITY OF
Edmonton