

edmonton.ca/ribbonofgreen #ribbonofgreen

RIBBON *of* GREEN

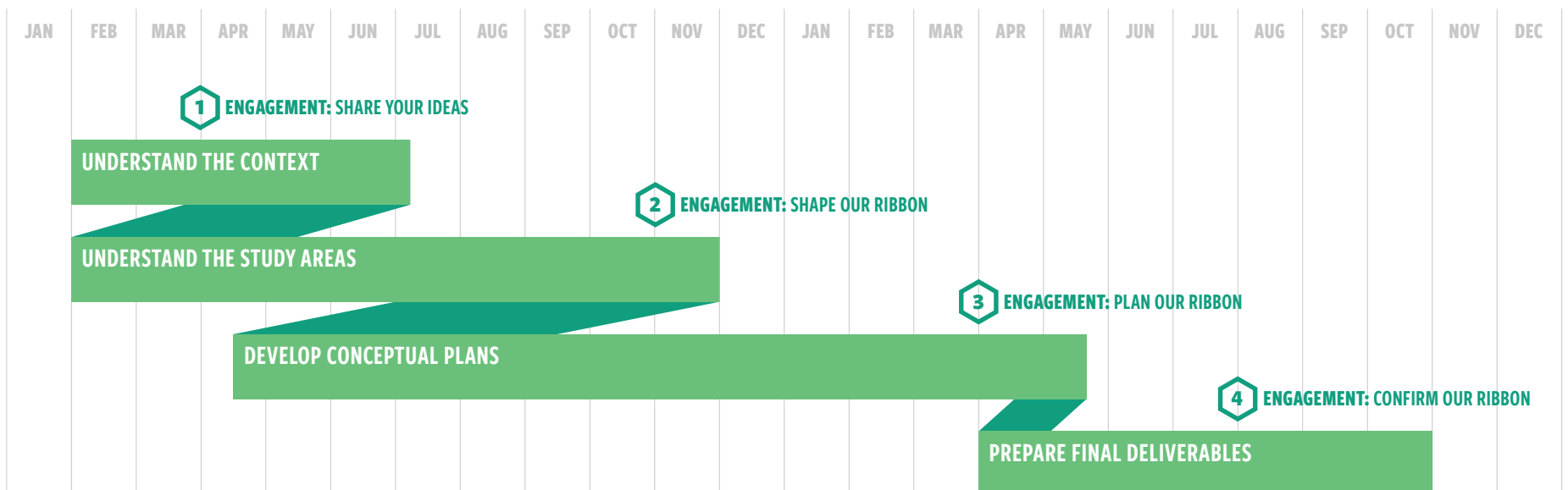
Welcome!

WHAT IS THE RIBBON OF GREEN?

The Ribbon of Green is Edmonton's whole river valley and ravine system.

The North Saskatchewan River Valley and Ravine System is the Edmonton region's greatest natural asset and a significant contributor to the quality of life of Edmontonians. Long established as a gathering place for Indigenous Nations and then fur traders, Edmontonians continue to value the conservation and celebration of the natural and cultural heritage of the River Valley and Ravine System.

The Ribbon of Green Plan (2018) will provide high-level strategic guidance for the conservation, preservation and use of the river valley and ravines. This is the first of four phases of the Ribbon of Green project that will be taking place over the next 18 months.



LONGEST CONNECTED URBAN PARKLAND IN NORTH AMERICA

80 KM IN LENGTH

edmonton.ca/ribbonofgreen #ribbonofgreen

WHAT IS THIS PROJECT?

The Ribbon of Green Project will provide strategic guidance for the southwest and northeast corners of Edmonton's River Valley and Ravine System.



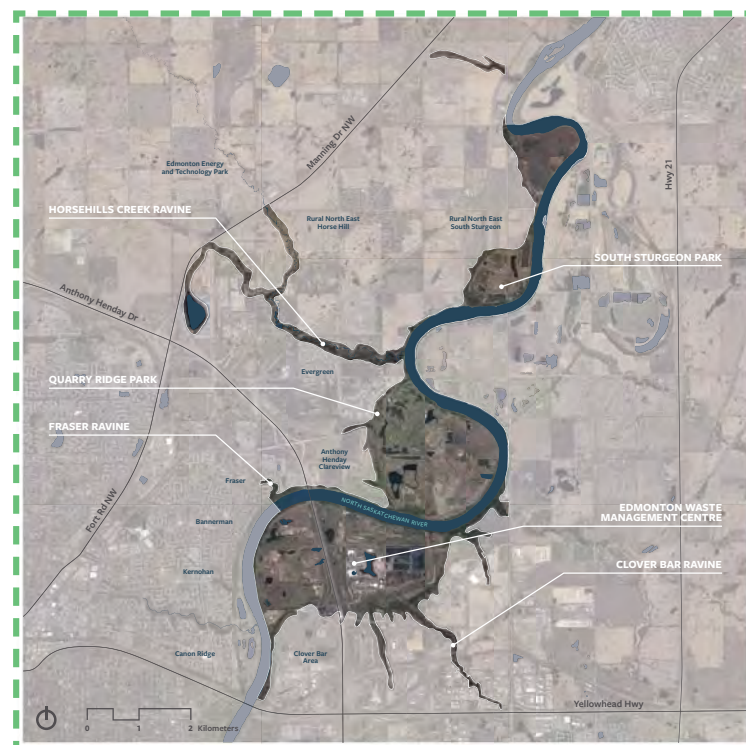
This project focuses on two study areas: Study Area 1 in the southwest, and Study Area 2 in the northeast.

STUDY AREA 1



2082 HECTARES

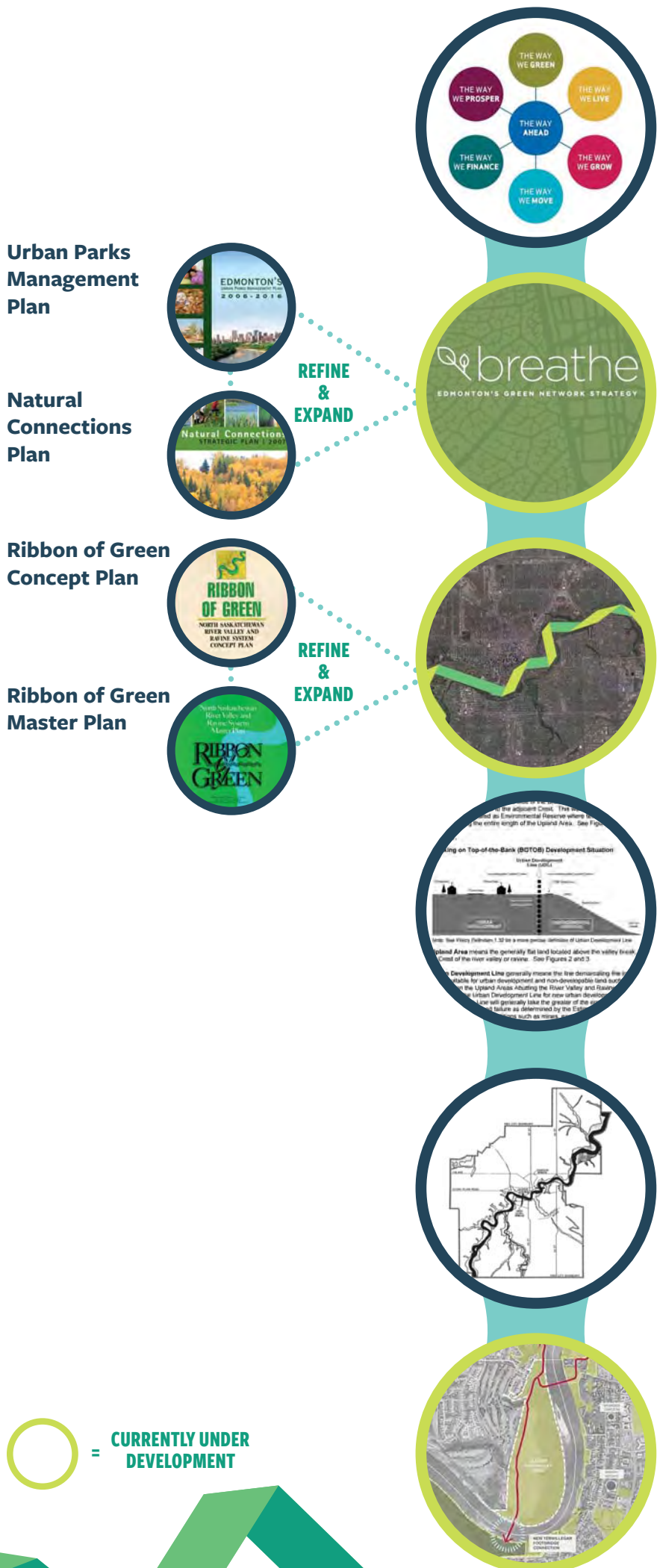
STUDY AREA 2



2044 HECTARES

WHAT GUIDES THIS PROJECT?

This diagram shows how strategic planning projects currently underway relate to one another and to plans that have been approved by City Council.



The Ways Strategic Plans

The Ways are high-level strategic plans that outline how the City will achieve its Vision.

BREATHE: Edmonton's Green Network Strategy

Breathe is a strategic plan to ensure that each neighbourhood will be supported by an accessible network of parks and open space as the city grows. The Plan will replace and expand on the Urban Parks Management Plan and Natural Connections Strategic Plan.

Ribbon of Green

The Ribbon of Green Plan (2018) will update and expand the Ribbon of Green Concept Plan (1990) and the Ribbon of Green Master Plan (1992).

Relevant City Policies

Policy documents that provide direction to Administration on the development and protection of Edmonton's North Saskatchewan River Valley and Ravine System, such as: Development Setbacks from River Valley/Ravine Crests (c542).

North Saskatchewan River Valley Area Redevelopment Plan

The North Saskatchewan River Valley Area Redevelopment Plan provides a comprehensive River Valley and Ravine management program to protect the North Saskatchewan River Valley and Ravine System.

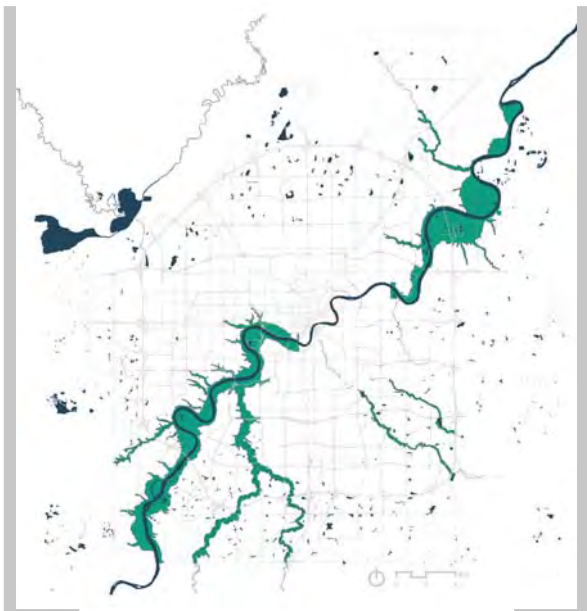
Oleskiw Park Master Plan

The Oleskiw Park Master Plan will help ensure Oleskiw Park remains a vital public space, by establishing a 25-year vision and management plan for the park.

PLANNING THE RIBBON OF GREEN

Past and ongoing studies will inform the Ribbon of Green Project. Three primary influencers are:

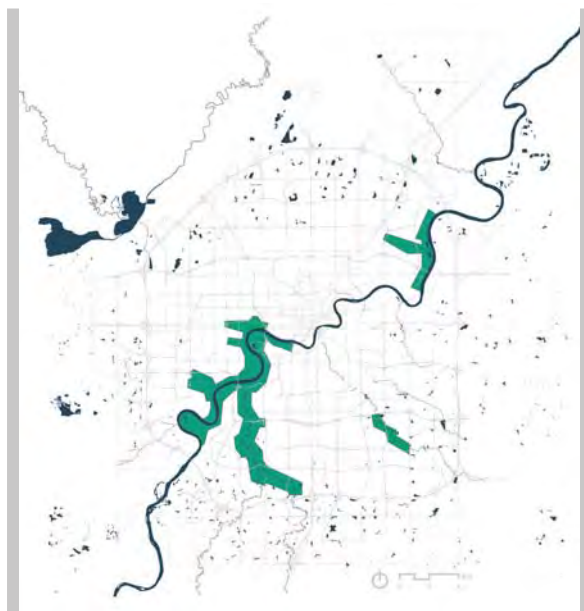
Ribbon of Green Concept Plan 1990



Ribbon of Green Concept Plan
Study Areas

In 1990, the Ribbon of Green Concept Plan provided a foundation for park development within the North Saskatchewan River Valley and Ravine System.

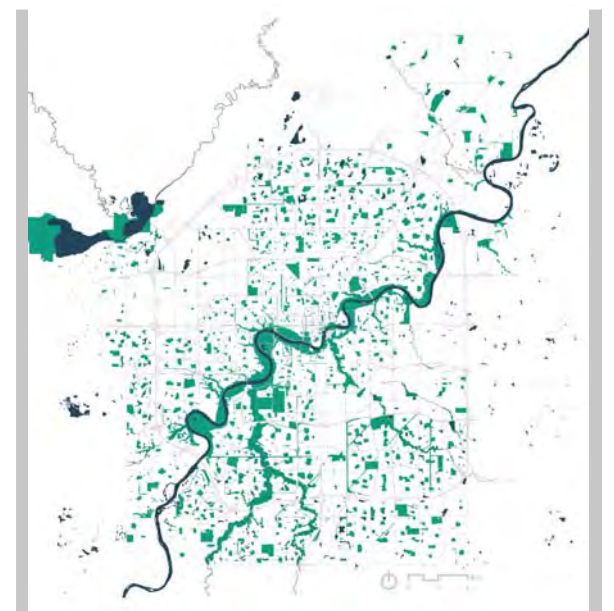
Ribbon of Green Master Plan 1992



Ribbon of Green Master Plan
Study Areas

In 1992, the Ribbon of Green Master Plan divided the areas into priority levels for planning and infrastructure. It laid out a decision-making framework based on technical, policy and financial data.

Breathe Green Network Strategy 2017



BREATHE Study Areas

BREATHE: Edmonton's Green Network Strategy is a high order strategic plan, informed by functional and connectivity analysis, that ensures that as the City grows each neighbourhood continues to be supported by a green network.

WHY A PLAN FOR THE RIBBON OF GREEN?

As new neighbourhoods are built, the river valley and ravine system faces growing pressures from increased use. The updated Ribbon of Green Plan will create a strategy for two study areas, align past plans with current policy, and include an integrated plan for the river valley and ravine system.

More than 25 years after the Ribbon of Green Concept Plan (1990) was written, Edmonton has undergone a significant transformation to become a city with over one million people.

To help meet the needs of a growing population, an updated and consolidated Ribbon of Green Plan will:

- 1. Develop a vision, and conceptual plan for each study area to facilitate public access while sustaining healthy and resilient ecosystems**
- 2. Help support and sustain an interconnected River Valley system that meets the needs of the environment, and those who work, play or live in Edmonton as part of the broader green network**

This Plan needs to account for a future population of **380,000** people in neighbourhoods adjacent to the study areas (the equivalent population of London Ontario, or Cleveland Ohio).



LAYERS OF ANALYSIS

Various layers of analysis will be used to inform the concept plans for each study area, including: public engagement; ecological, recreational, and cultural assessments; as well as geotechnical and transportation studies.

Public Engagement

Public Engagement will create opportunities for the public to provide meaningful, appropriate and actionable feedback.

Ecological Assessment

The **Ecological Assessment** will identify ecologically important areas and features that should be preserved or conserved within the study areas.

Recreational Assessment

The **Recreational Assessment** will identify types of passive and active recreation activities appropriate for each study area.

Cultural Assessment

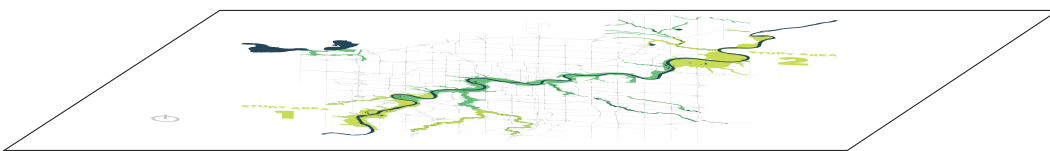
The **Cultural Assessment** will identify cultural resources within each study area.

Geotechnical Opportunities and Constraints

A **Geotechnical Assessment** will examine the feasibility of access points and routes into each study area for a variety of transportation modes.

Transportation Opportunities and Constraints

The **Transportation Study** will review the multi-modal neighbourhood transportation networks surrounding each area, and provide recommendations for appropriate links, parking, and access.



Study Areas

IMPLEMENTING THE RIBBON OF GREEN

The Ribbon of Green Plan will be considered by Council at the end of 2018.

Following approval by Council, the Ribbon of Green will:

- » Help Edmontonians connect through the river valley, and to the river valley and ravine system
- » Provide accessible year-round recreation space for people of all ages
- » Continue to protect ecologically sensitive areas

By providing a framework for:

- » Connecting and expanding Edmonton's green network through acquisition, easements, and other tools
- » Completing additional studies and planning through park master plans, followed by detailed design and construction

What is a Master Plan?

A master plan is a detailed plan and design for a sub-area/park within the Ribbon of Green that also includes a specific vision and comprehensive 25-year management plan. These plans implement the Ribbon of Green Plan by completing the additional studies required, and refining the conceptual plan for the area. Master plans will also provide direction for environmental management, as well as recommendations for civic, cultural and recreational uses that are appropriate to the park.



Example:
Oleskiw Park Master Plan
(In Progress)

Example:
Dawson Park and Kinnaird Ravine
(In Progress)

FOUR STAGES OF ENGAGEMENT

Over the next 18 months, there are four stages of engagement for the public to review materials and provide feedback.

1 SHARE IDEAS

Feedback gathered at this stage will inform the vision, program statement, priorities and policies for each study area. Public insight will also work with the ecological, cultural and recreational assessments to define areas for preservation, conservation and recreation.



POLICY



2 SHAPE OUR RIBBON FALL 2017

The public will have an opportunity to review the areas proposed for preservation, conservation, and use and provide feedback. The draft policies will also be presented for review and comments.



DESIGN

3 PLAN OUR RIBBON SPRING/SUMMER 2018

At this stage, the public can review the conceptual designs and associated direction for each study area. Feedback from the public will be used to help refine each concept plan and the consolidated Ribbon of Green Plan.



REFINE

4 CONFIRM OUR RIBBON SUMMER/FALL 2018

The final Ribbon of Green Plan will be presented to the public to confirm its direction before it is presented to council for approval.



FINAL PLAN

Activity A:

SHARE YOUR INSIGHTS.

Follow the photos through the river valley and ravines or watch the video to get a sense of each study area.

Where have you been?

Place dots on the map to indicate where you have been in each study area.

What is significant in each study area?

Use the Post-its to identify areas of significance.

FISH
SPAWNING
HABITAT

Great place
to throw a
frisbee!

This area is
known for its
history of
farming

Your input will inform the recreational, cultural and ecological analyses, and the program statement - what should occur in terms of the use, management, and conservation, for each study area.

Input will also help define areas for preservation, conservation and use.

GOOD SPOT
TO LAUNCH
A CANOE ↓

my class likes
to snowshoe
along here.

BEAVER
LODGE

GREAT BEACH
FOR SKIPPING
STONES

Site of my
first kiss
♡

ROCKIN'
ROBIN'S
NEST ↙

Squirrels
EVERYWHERE!

My favourite place
to walk my dog ↗



Activity B:

SHARE YOUR INTERESTS.

Thinking about how you currently use Edmonton's river valley and ravine system, and how you would like to use the system in the future...

What would you like to do/see in the two study areas?

Write your interest on a ribbon and pin it to the ribbon wall.

Your input will inform the policies and concept plan for each study.



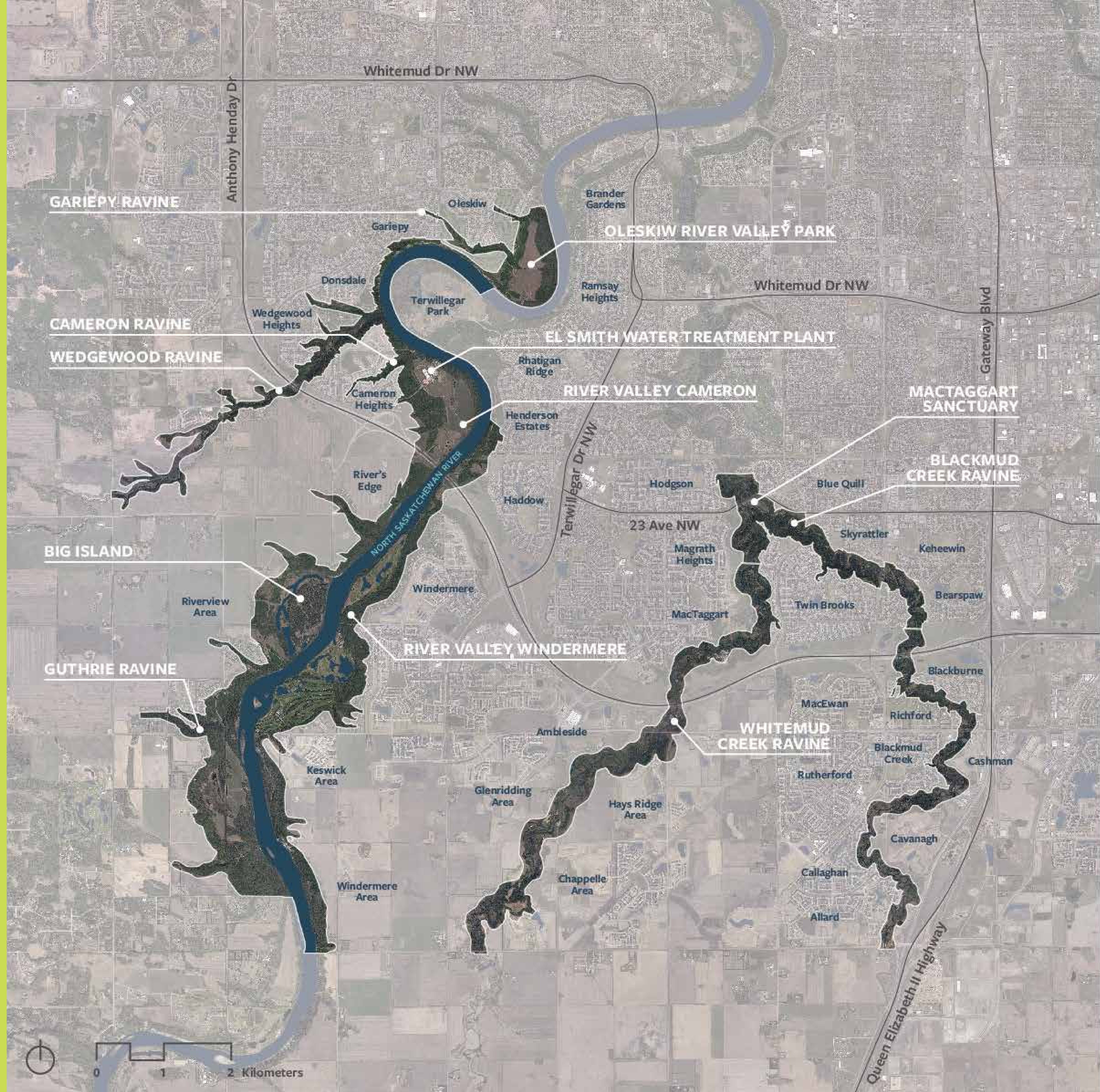
Study Area

1

SOUTH WEST

Where have you been?

Place dots on the map to indicate where you have been in each study area.



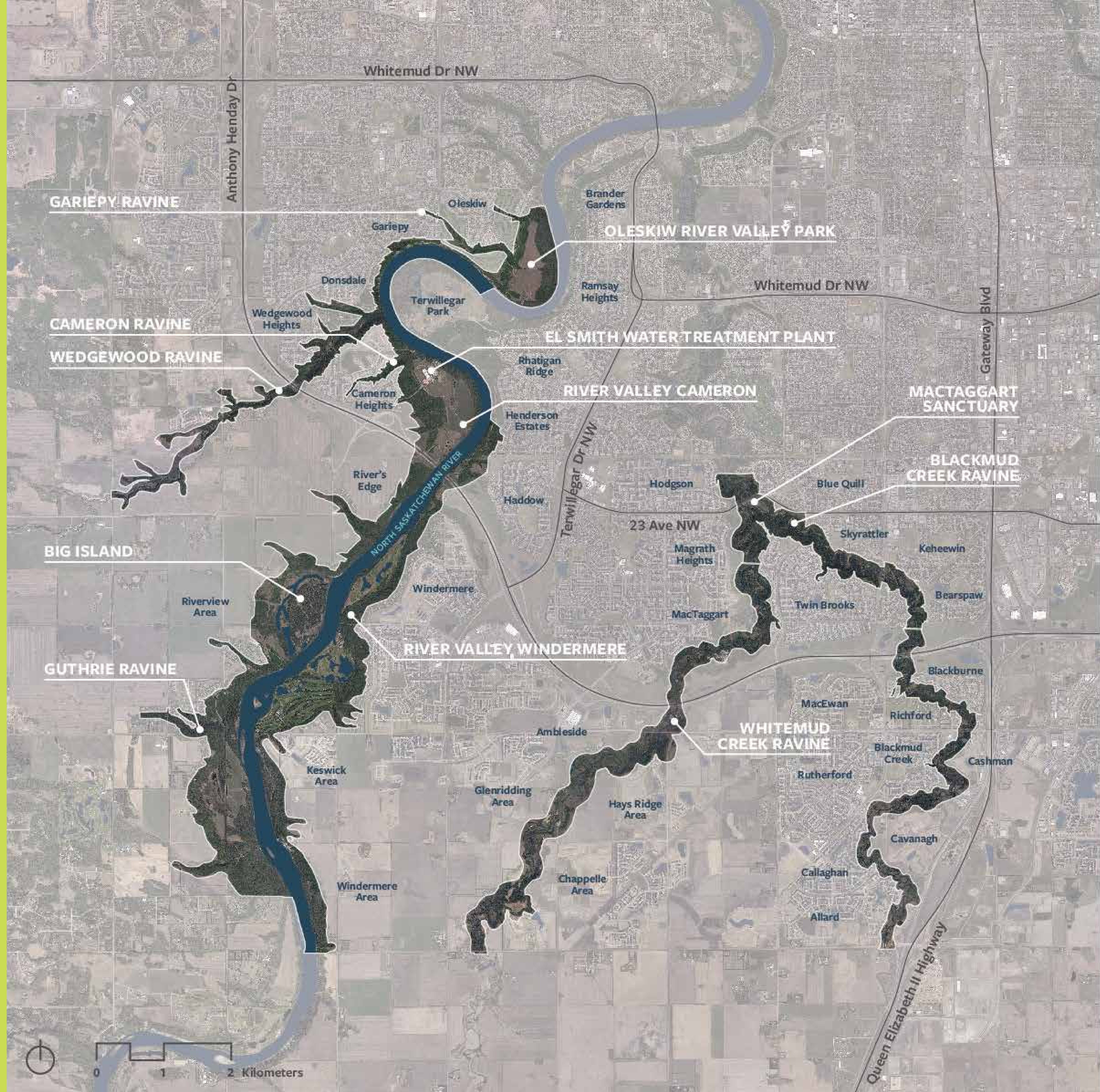
Study Area

1

SOUTH WEST

What is significant in each study area?

Use the Post-its to identify areas of significance.



BLACKMUD RAVINE



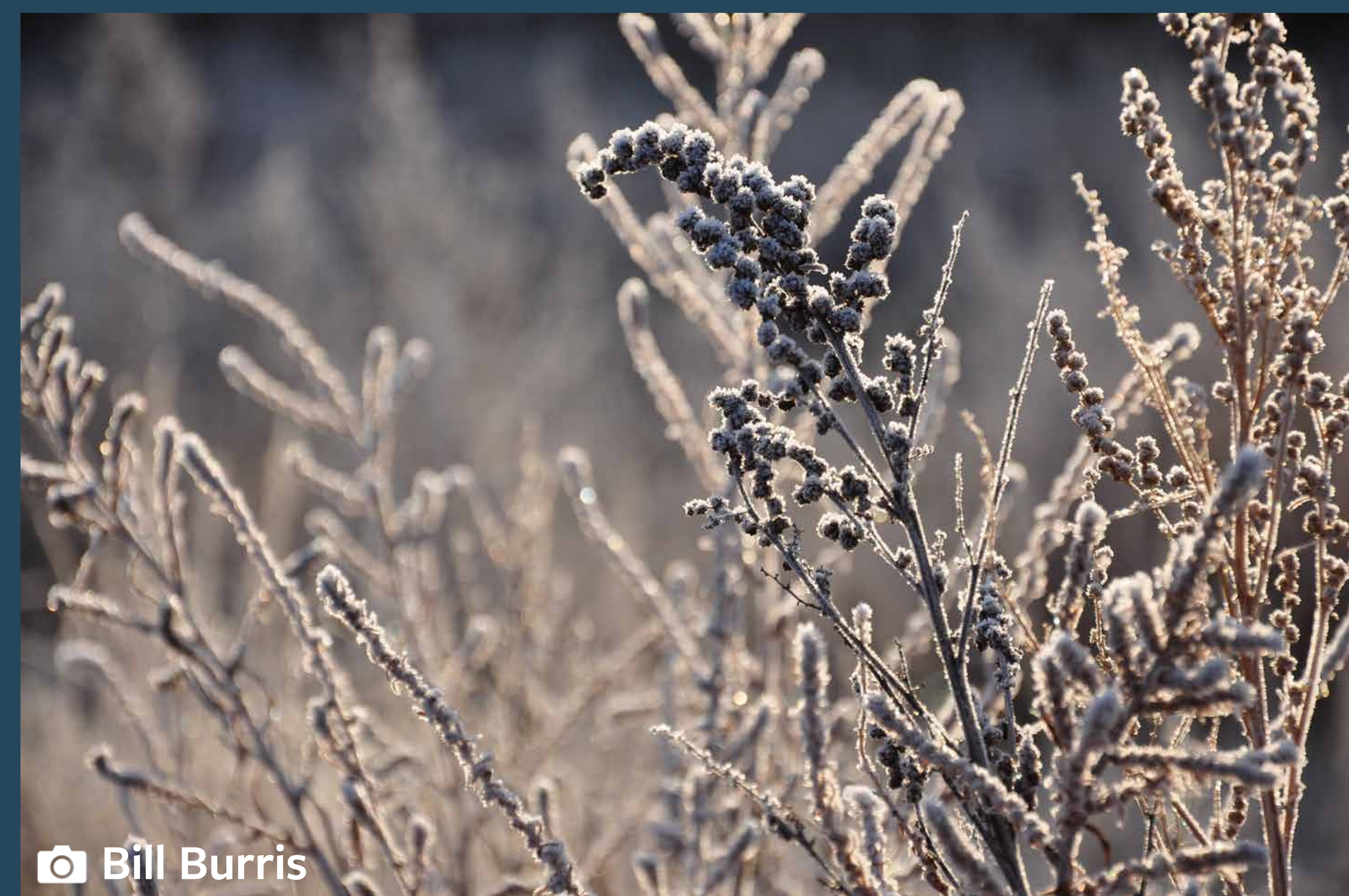
📷 Bill Burris



📷 Bill Burris



📷 Bill Burris

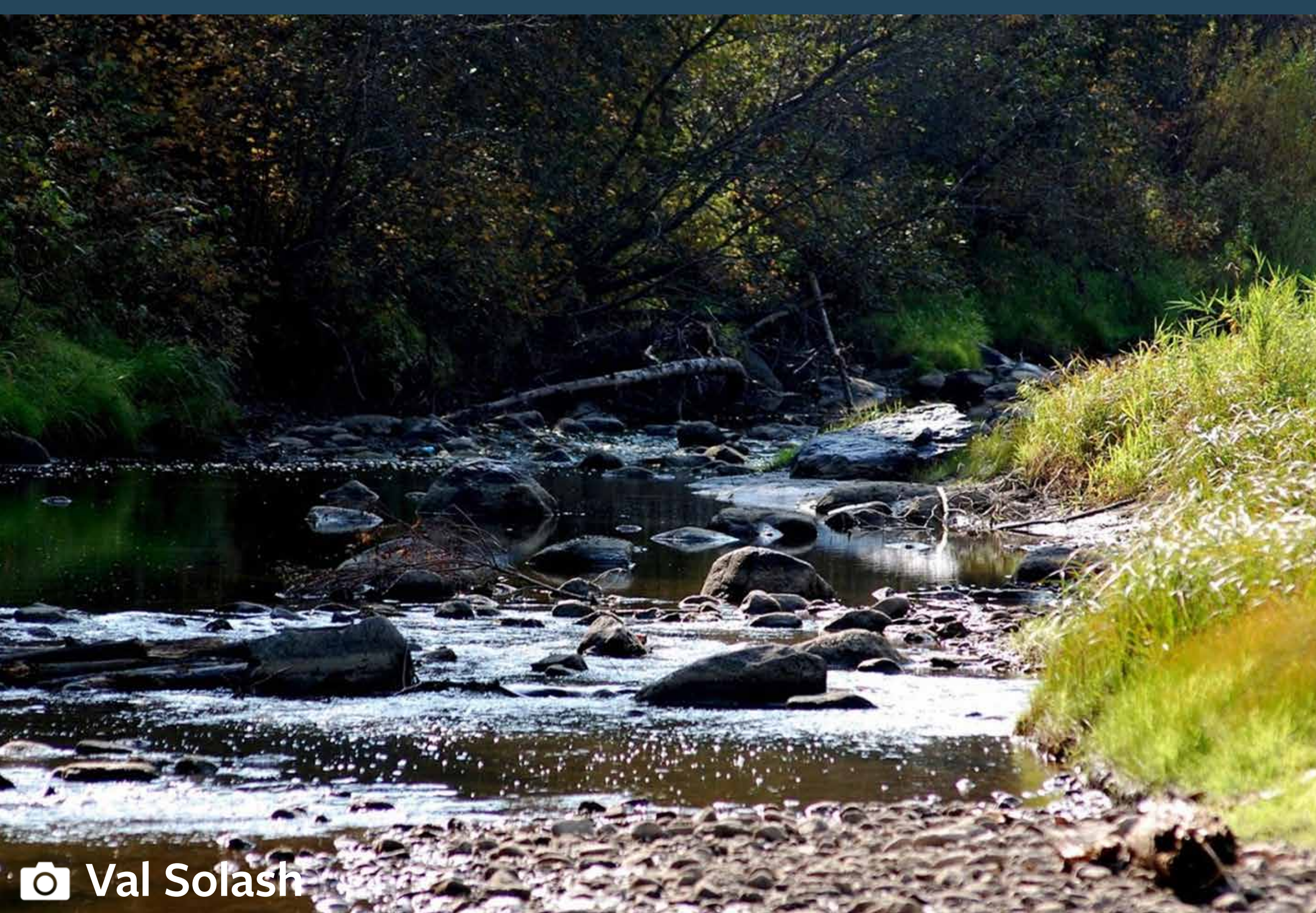


📷 Bill Burris

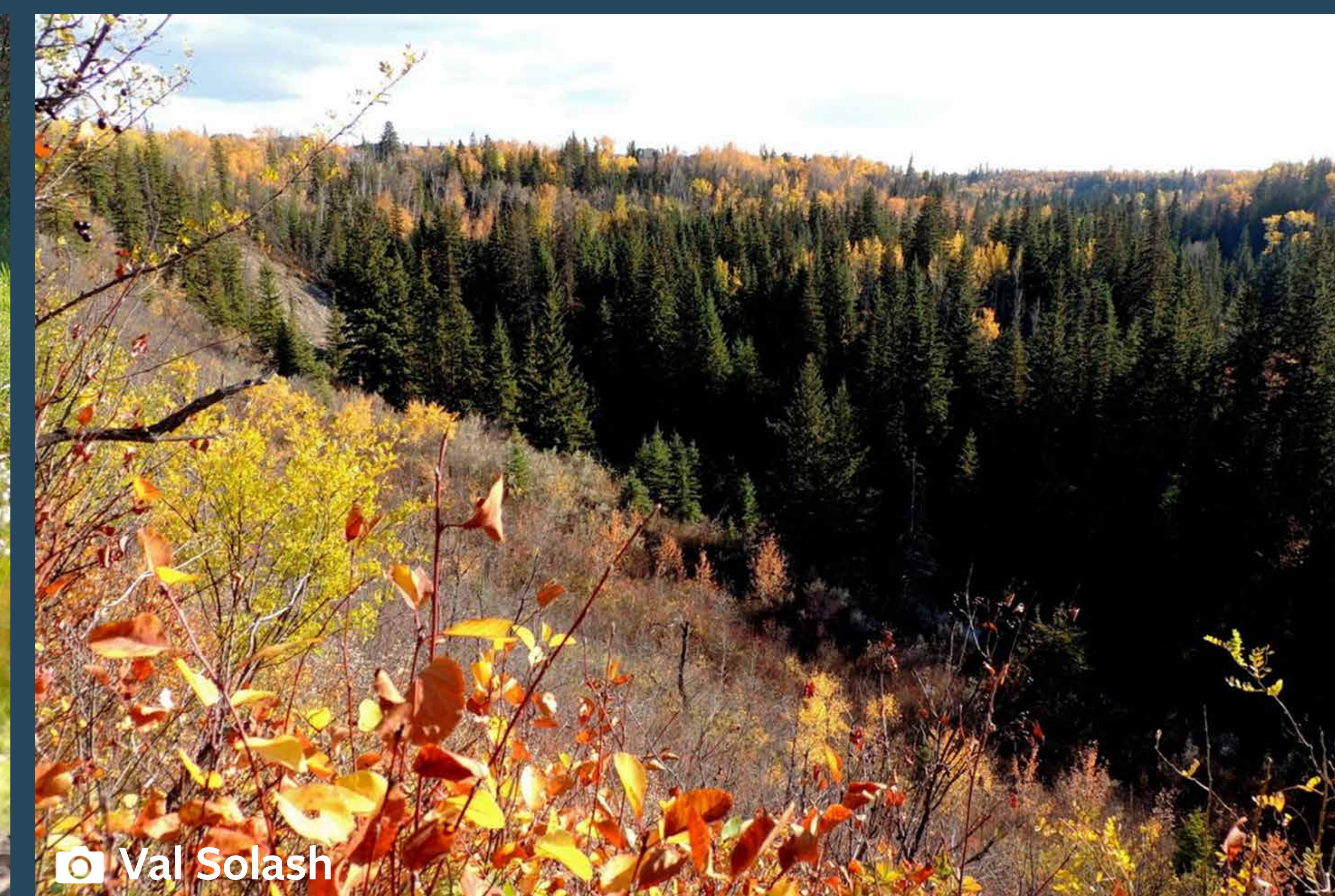
WHITEMUD RAVINE



📷 Val Solash



📷 Val Solash



📷 Val Solash



📷 Val Solash

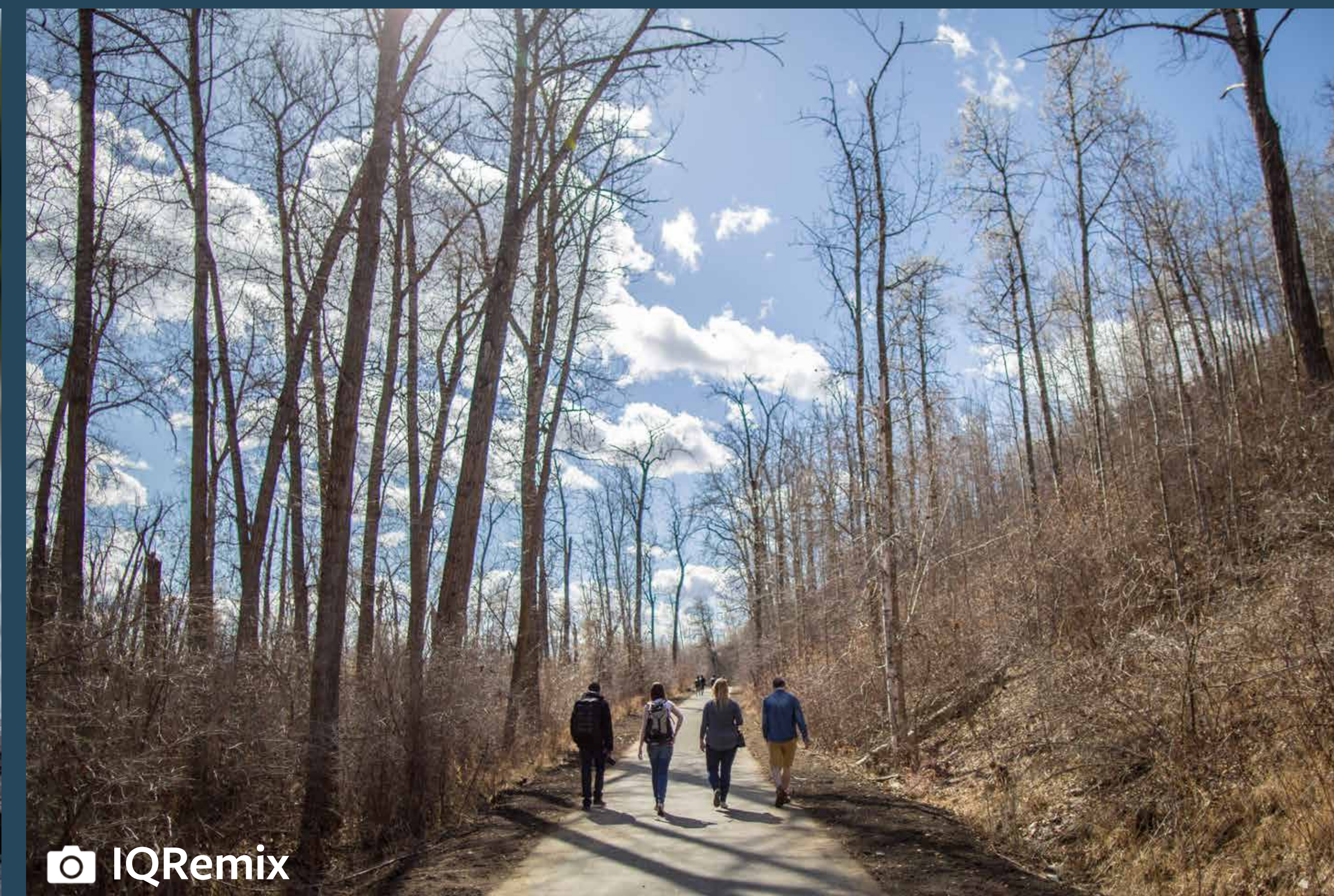
OLESKIW



📷 Jordan Schulz



📷 DR Scott



📷 IQRemix



📷 O2 Planning

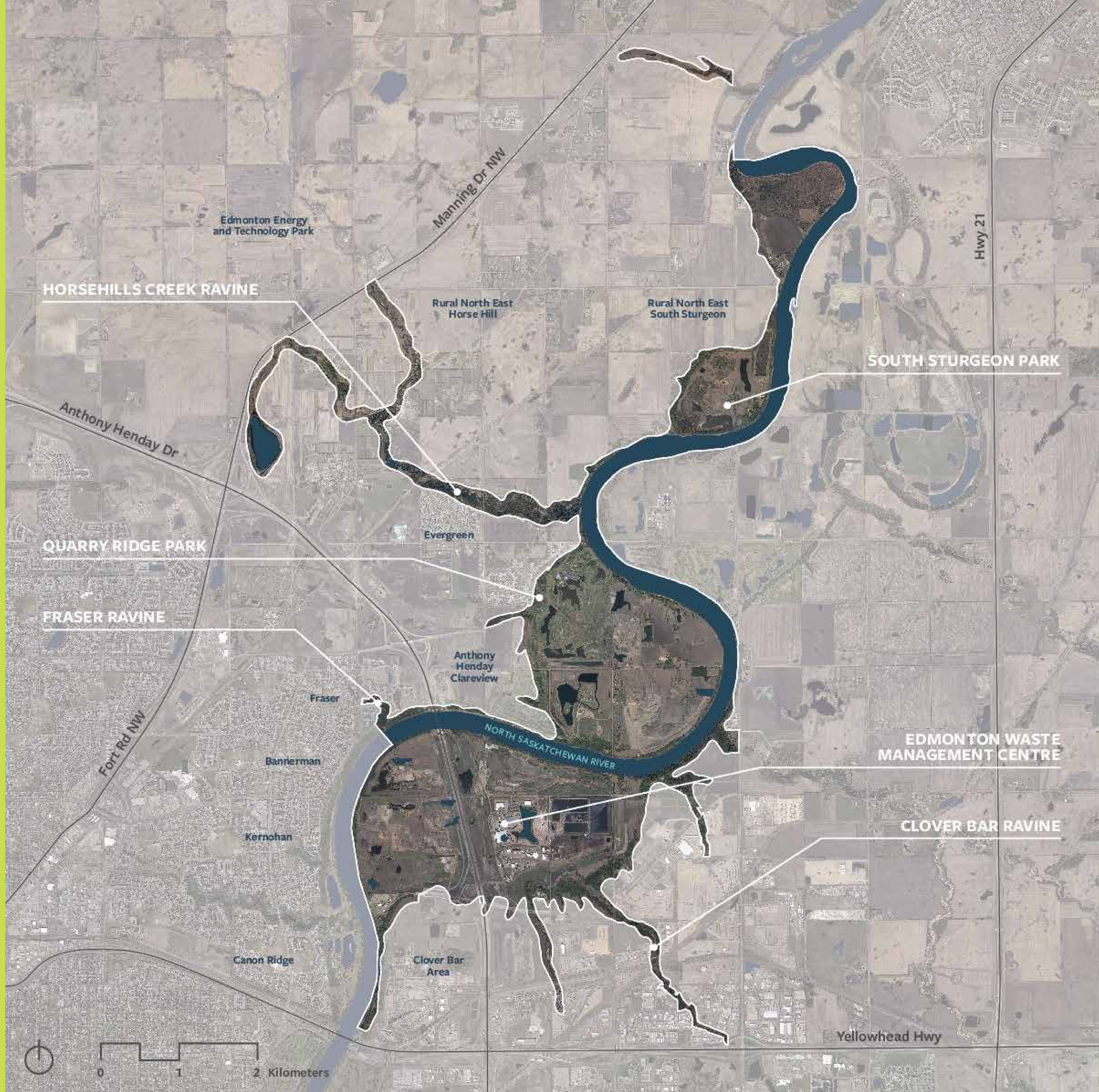
Study Area

2

NORTH EAST

Where have you been?

Place dots on the map to indicate where you have been in each study area.



Study Area

2

NORTH EAST

What is significant in each study area?

Use the Post-its to identify areas of significance.



RIVERBEND GARDENS



📷 Mack Male



📷 Mack Male



📷 Mack Male



📷 O2 Planning

Activity C:

SHARE YOUR VISION.

In one sentence, write your vision or priority for one or both of the study areas.

Pin your vision statement on the clothesline.

Your input will inform the vision statement and priorities for each study area. These two vision statements will guide the development of policy and conceptual designs for each study area, and act as a check for future planning and implementation.



NEXT STEPS




The Project Team will:

- » Compile the feedback received online and in-person into a What We Heard Report
- » Write the vision statement, program statement and priorities for the Southwest and Northeast study areas
- » Conduct an ecological, recreational and cultural assessment
- » Write draft policy to guide the use and management of the study areas
- » Delineate areas for preservation, conservation and recreation

At the next public engagement opportunity, **SHAPE OUR RIBBON (Fall 2017), you will be invited to:**

- » Provide feedback on all of the above
- » Inform the design and requirements for different uses within the study areas
- » Contribute ideas about how to protect and enhance the ecological network

Let's keep the conversation going...

-  edmonton.ca/ribbonofgreen
-  ribbonofgreen@edmonton.ca
-  [#ribbonofgreen](https://www.instagram.com/ribbonofgreen)

Stay in touch and sign up for our newsletter!

edmonton.ca/ribbonofgreen [#ribbonofgreen](https://www.instagram.com/ribbonofgreen)

