



RIBBON *of* GREEN

edmonton.ca/ribbonofgreen [#ribbonofgreen](https://twitter.com/ribbonofgreen)

Edmonton

WHAT IS THE RIBBON OF GREEN?

The Ribbon of Green is Edmonton's whole river valley and ravine system.

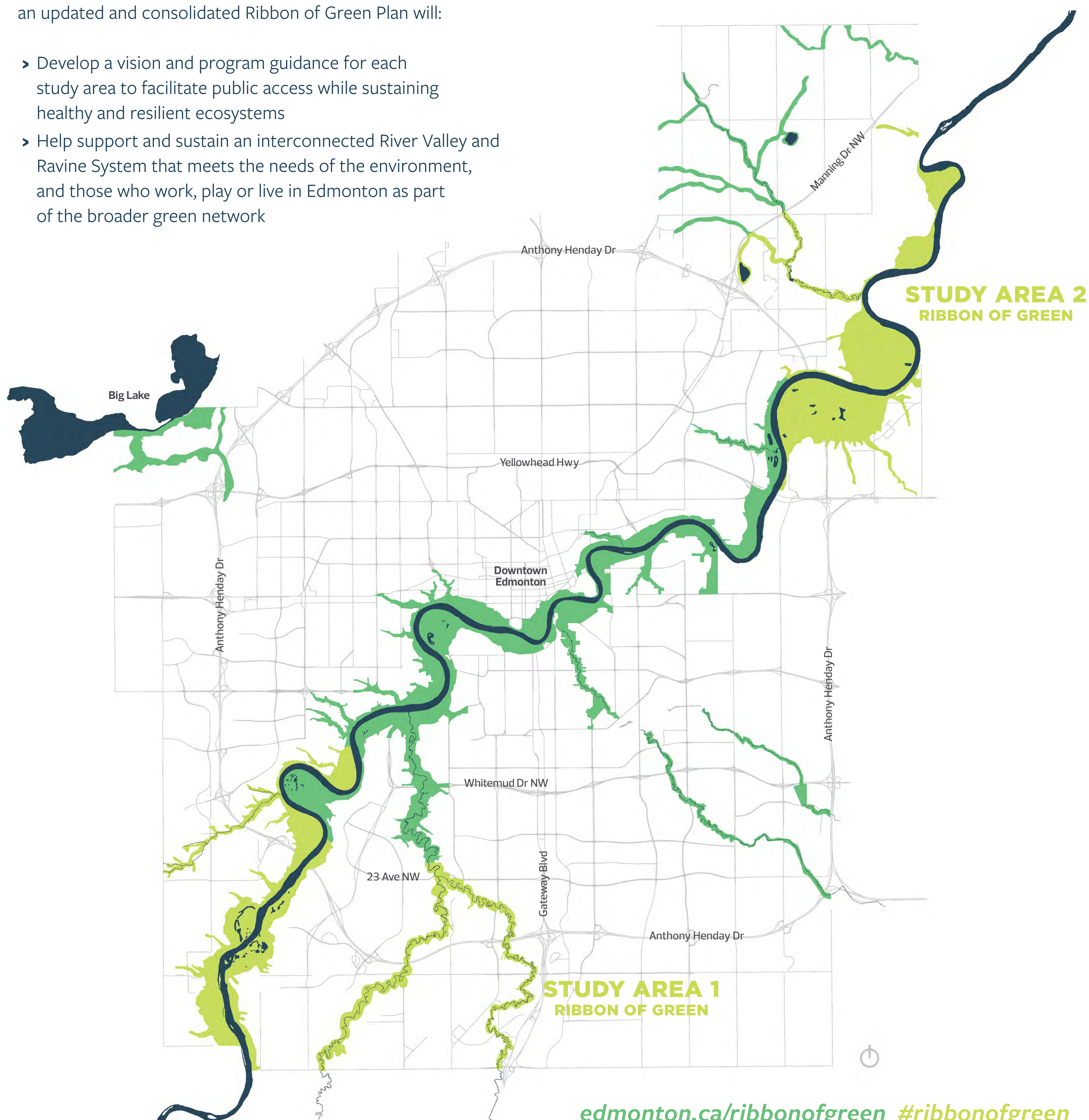
The Ribbon of Green (2018) Project will provide strategic guidance for the southwest and northeast corners of Edmonton's River Valley and Ravine System.

Why Plan for the Ribbon of Green?

As new neighbourhoods are built, the River Valley and Ravine System faces growing pressures from increased use. This Plan needs to account for a future population of 300,000 people in neighbourhoods adjacent to the southwest study areas and 150,000 people around the northeast study areas.

To help meet the needs of a growing population, an updated and consolidated Ribbon of Green Plan will:

- › Develop a vision and program guidance for each study area to facilitate public access while sustaining healthy and resilient ecosystems
- › Help support and sustain an interconnected River Valley and Ravine System that meets the needs of the environment, and those who work, play or live in Edmonton as part of the broader green network



TONIGHT

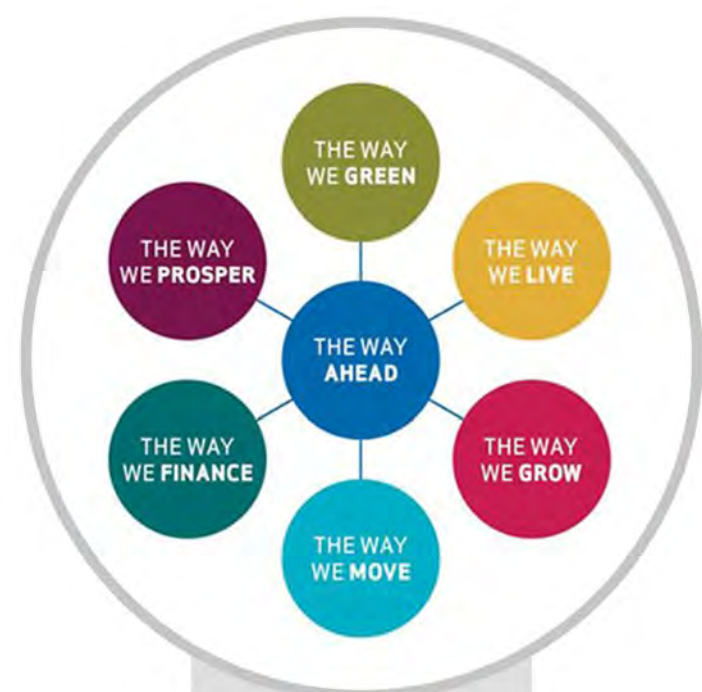
Tonight, the information presented will outline the key directions and components of the plan.

If you want to read through the document in full, you can flip through a copy here or download your own at edmonton.ca/ribbonofgreen

PLAN COMPONENT:	PURPOSE:	TONIGHT:
Vision + Principles	These foundational statements guide future decisions to ensure all actions are working towards the same ends.	You can review and comment on the Vision and Principles.
System-wide Policies	The system-wide policies guide decision making and direct the planning, design and management of the River Valley and Ravine System.	The panels summarize the key directions within each policy section. You can also read and comment on the draft policy.
Land Management Classifications	<p>The System is divided according to three main Classifications to respond to existing conditions, guide future use, protect sensitive areas and enhance disturbed areas.</p> <p>PRESERVATION</p> <p>CONSERVATION Trail-based Recreation Natural Recreation</p> <p>ACTIVE/WORKING LANDSCAPES Intensive Recreation Agriculture + Horticulture Urban Services + City-wide Attractions</p>	During the last engagement you provided insight into the appropriate uses, infrastructure and facilities as well as the location of these classifications. Tonight, you can review these, as well as specific policy direction.
Program Guidance	The program guidance provides initial spatial direction to function as a starting point for future site-specific planning.	You can review and provide feedback on the visions, program statements and spatial program guidance for each reach within both study areas.
Implementation	This section provides initial consideration to inform a detailed implementation plan that will be developed after the Ribbon of Green is approved.	You can review and comment on these implementation considerations.

River Valley Open Space Planning in Edmonton

The diagram below illustrates how the Ribbon of Green relates to other plans that have been approved by City Council.

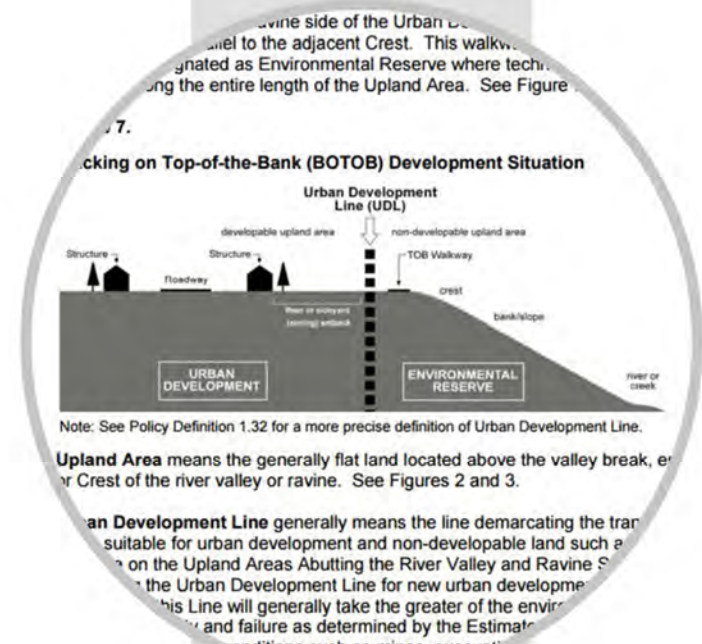


THE WAYS STRATEGIC PLANS

The Way Ahead, The Way We Finance, The Way We Green, The Way We Grow, The Way We Live, The Way We Move, The Way We Prosper*

The City's high-level strategic plans that outline how the City will achieve its Vision. They help to focus the City's efforts to deliver services and infrastructure that are most important to Edmontonians while managing the opportunities and challenges of our ever changing city.

(*Under development)



RELEVANT CITY POLICIES

Natural Area Systems Policy (C531), River Access Guiding Principles (C586), Development Setbacks from River Valley/Ravine Crests (C542), Open Space Policy (C594)

Provides direction to Administration on the development and protection of Edmonton's North Saskatchewan River Valley and Ravine System.



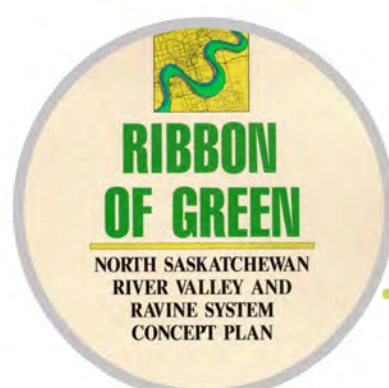
BREATHE: EDMONTON'S GREEN NETWORK STRATEGY & NATURAL CONNECTIONS PLAN

Breathe is a transformative strategic plan to make sure that each neighbourhood will be supported by an accessible network of parks and open space as the city grows. Natural Connections is Edmonton's plan for the protection, management and restoration of local natural areas and biodiversity, and community engagement in that effort.

Natural Connections Plan



Ribbon of Green Concept Plan



UPDATE & EXPAND

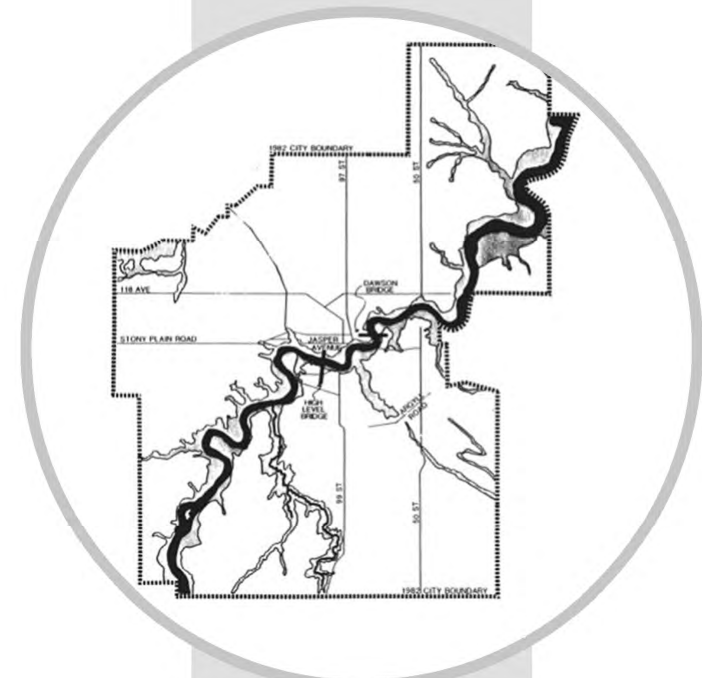


Ribbon of Green Master Plan



RIBBON OF GREEN

A strategic and conceptual plan for study areas within the North Saskatchewan River Valley and Ravine System. The strategic plan will focus on the southwest and northeast portion of the System.



NORTH SASKATCHEWAN RIVER VALLEY AREA REDEVELOPMENT PLAN (BYLAW 7188)

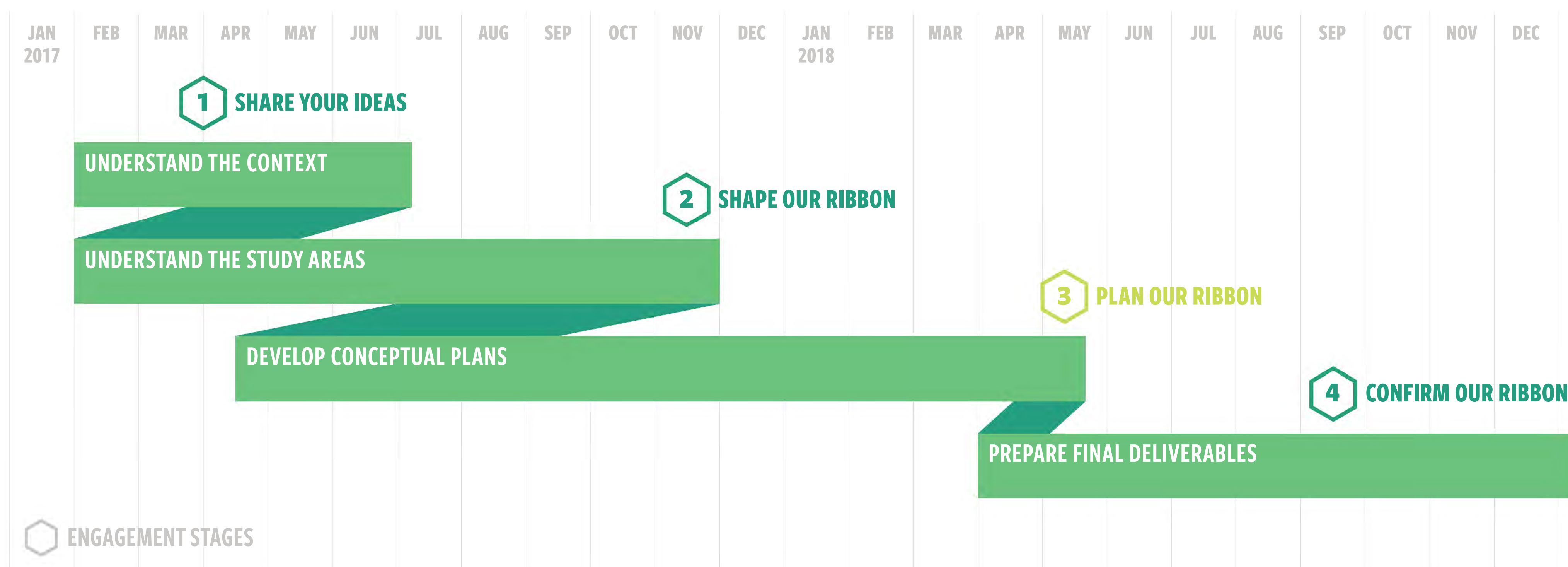
Provides the environmental review framework and policy direction for the planning and protection of the North Saskatchewan River Valley and Ravine System.



SITE-SPECIFIC PLANS

Further River Valley and Ravine System planning will involve field assessments to verify the direction contained here and inform the detailed planning and design for specific sites within the System. These plans can take many forms including the design and program for a single park, a management strategy for controlling erosion on a vulnerable slope, a trail alignment study and a natural area management program, among others.

STAGES OF ENGAGEMENT



Share Your Ideas SPRING 2017

Feedback informed:

- › Vision + Priorities
- › Land Management Classifications
- › Analysis

Both the Phase 1 and Phase 2 What We Heard Reports are available at the library.

Shape Our Ribbon FALL 2017

Public reviewed:

- › Vision + Priorities
- › Land Management Classifications location, uses, facilities and infrastructure
- › Program Statements for each amenity node + primary trail head

Feedback informed:

- › Policies
- › Program guidance for each amenity node + primary trail head

Plan Our Ribbon SPRING 2018

Public will review:

- › Draft plan
- › Vision + Principles
- › Policies
- › Program guidance for each amenity node + primary trail head

Feedback will inform:

- › Revisions to the draft plan

Confirm Our Ribbon FALL 2018

Public will review:

- › Draft plan

Feedback will inform:

- › Final Plan

Indigenous Engagement

The City of Edmonton is committed to keeping Indigenous communities informed and engaged throughout the Ribbon of Green (2018) project.

Over Summer 2017, the City met with several communities to gather information and insight through workshops with Traditional Knowledge Keepers. The following themes emerged from these engagements.

The City is continuing to engage communities through project bulletins and planned in-person meetings.

RECOGNITION OF INDIGENOUS PEOPLES:

First Nations and Metis history, culture and traditional knowledge contributes to the diversity of Edmonton and helps improve the quality of life for all Edmontonians.

SIGNIFICANT CULTURAL/HISTORICAL SITES:

Future park development and construction should plan for the possibility of finding burial sites, archaeological remains, and modified/marked trees.

GATHERING PLACES: Edmonton needs Indigenous gathering places to practice ceremonies, celebrate, teach and promote culture.

PROTECTION OF NATURAL AREAS: Rivers, streams, wetlands and natural areas are environmentally/culturally significant to Indigenous people.

ENVIRONMENTAL STEWARDSHIP: Care of the environment (e.g. monitoring, management, restoration, environmental awareness and education) is important and should involve Indigenous peoples.

TRADITIONAL PLANTS: There are many natural and undeveloped areas throughout Edmonton that contain traditional plants that are important and sacred to Indigenous peoples and should be protected.

ENGAGEMENT: Indigenous communities are interested in early, meaningful in-person and on-site engagement, to share traditional knowledge, identify issues and concerns and collaborate.

VISION + PRINCIPLES

VISION

The North Saskatchewan River Valley and Ravine System is a protected, connected landscape that supports ecological resilience and promotes healthy living through opportunities for recreation, active transportation and gathering in the tranquility of nature.

PRINCIPLES

- › The **ecological system** will be protected, connected, restored and managed to preserve its integrity and resilience and to minimize the impact of human use.
- › New and/or expanded **facilities, infrastructure and programming** will provide opportunities for users to gather and recreate in nature, or provide essential urban services, and will be located and designed to minimize the environmental impact.
- › A **continuous trail system** and access points will connect neighbourhoods, the city and the region to the River Valley and Ravine System and provide safe and accessible opportunities for recreation and active transportation.
- › Through **engagement and partnerships**, meaningful opportunities will be provided to contribute to the planning, design and management of the River Valley and Ravine System.
- › The **natural and cultural heritage** of the River Valley and Ravine System will shape the places, experiences, and connections within it. Natural and historical sites, features and landscapes will be protected and, where appropriate, interpreted.
- › **Traditional uses** will be recognized and supported throughout the River Valley and Ravine System, and Communities will be meaningfully engaged in the planning, management and use of the system.

HOW THE VISION + PRINCIPLES WERE DEVELOPED: Your feedback throughout this process on the vision and priorities for the northeast and southwest reaches of the River Valley and Ravine System has informed the development of the following overarching vision and principles. Specifically, that feedback has been consolidated with the original vision and principles from the Ribbon of Green Concept Plan (1990) and Master Plan (1992). This vision and principles above have guided the draft direction that you will review tonight.

What do you think?

Share your feedback on a sticky note here.

› Your input will confirm this direction for the two study areas.

SYSTEM-WIDE POLICIES

These system-wide policies respect and implement the Strategic Directions outlined in *Breathe: Edmonton's Green Network Strategy* for the southwest and northeast portion of the River Valley and Ravine System.

The key directions are listed on the panel whereas the detailed policies are in the hand-out. You can pick up a hand-out with the entire draft policy section here or review hand-outs for the sections that interest you most at each panel.

Ecological Integrity

BREATHE STRATEGIC DIRECTION:

Preserve and enhance the ecological quality and connectivity of the green network.

THIS SECTION OF THE PLAN PROVIDES DIRECTION ON THE FOLLOWING:

- › Respecting the ecological network
- › Protecting the Ribbon of Green
- › Buffering sensitive sites
- › Mitigating ecological impacts
- › Restoring and remediating
- › Site-specific planning
- › Conducting environmental reviews
- › Monitoring ecological health

Are there any categories missing?
Share your feedback on a sticky note here.

Interested in reading the draft direction?
Pick-up a handout and tell us what policies you like and what you have concerns about.

Safe + Inclusive

BREATHE STRATEGIC DIRECTION:

Ensure the green network is safe, accessible and inclusive for all.

THIS SECTION OF THE PLAN PROVIDES DIRECTION ON THE FOLLOWING:

- › Improving safety through education
- › Improving safety through design
- › Improving trail safety
- › Lighting
- › Improving accessibility for all

Vibrant Spaces

BREATHE STRATEGIC DIRECTION:

Make open spaces vibrant, sustainable and functional to support community identity and needs.

THIS SECTION OF THE PLAN PROVIDES DIRECTION ON THE FOLLOWING:

- › Experiencing the River Valley and Ravine System
 - › Celebrating in the System
 - › Allowing commercial uses
 - › Facilitating year-round use
 - › Incorporating public art
 - › Expanding recreational uses
-

Are there any categories missing?

Share your feedback on a sticky note here.

Interested in reading the draft direction?

Pick-up a handout and tell us what policies you like and what you have concerns about.

Education + Awareness

BREATHE STRATEGIC DIRECTION:

Improve awareness of open-space opportunities and appropriate use.

THIS SECTION OF THE PLAN PROVIDES DIRECTION ON THE FOLLOWING:

- › Recognizing Indigenous Traditional Use
- › Promoting River Valley and Ravine System history and culture
- › Wayfinding
- › Building awareness of appropriate behaviour in the System
- › Providing educational opportunities
- › Designing signs

Distribution + Supply

BREATHE STRATEGIC DIRECTION:

Ensure an adequate supply, quality, diversity and distribution of open spaces throughout Edmonton.

THIS SECTION OF THE PLAN PROVIDES DIRECTION ON THE FOLLOWING:

- › Expanding the Ribbon of Green
 - › Balancing protection with public use
 - › Providing recreational opportunities
 - › Managing heritage, cultural + traditional resources
 - › Developing buildings, urban services + facilities
-

Are there any categories missing?

Share your feedback on a sticky note here.

Interested in reading the draft direction?

Pick-up a handout and tell us what policies you like and what you have concerns about.

Public Access + Connectivity

BREATHE STRATEGIC DIRECTION:

Improve open space access for residents and visitors.

THIS SECTION OF THE PLAN PROVIDES DIRECTION ON THE FOLLOWING:

- › Accessing the System
- › Creating a trail network
- › Locating and relocating trails
- › Addressing user-created trails
- › Facilitating trail experiences
- › Planning trails
- › Designing trails
- › Providing trail amenities
- › Maintaining trails
- › Monitoring trail use
- › Implementing stairs + decking
- › Planning pedestrian bridges
- › Parking
- › Accessing the System with vehicles + transit

Adaptive Management + Flexible Spaces

BREATHE STRATEGIC DIRECTION:

Adaptively manage changing trends in growth, demographics and preferences.

THIS SECTION OF THE PLAN PROVIDES DIRECTION ON THE FOLLOWING:

- › Managing the System through monitoring, evaluation and adjustment
 - › Maintaining the System to protect assets, minimize damage and ensure ecological health
 - › Creating flexible spaces
-

Are there any categories missing?

Share your feedback on a sticky note here.

Interested in reading the draft direction?

Pick-up a handout and tell us what policies you like and what you have concerns about.

Community Engagement

BREATHE STRATEGIC DIRECTION:

Empower people to become active participants and stewards in planning, sustaining and using the green network.

THIS SECTION OF THE PLAN PROVIDES DIRECTION ON THE FOLLOWING:

- › Engaging the Public
- › Collaborating with Indigenous Communities

Collaborative Planning

BREATHE STRATEGIC DIRECTION:

Improve collaborative open space planning among City stakeholders, community partners and other jurisdictions.

THIS SECTION OF THE PLAN PROVIDES DIRECTION ON THE FOLLOWING:

- › Partnering
- › Coordinated Planning

Sustainable Funding

BREATHE STRATEGIC DIRECTION:

Develop a sustainable funding model that responds to operational requirements, community capacity and local needs.

THIS SECTION OF THE PLAN PROVIDES DIRECTION ON THE FOLLOWING:

- › Sustainable Funding
-

Are there any categories missing?

Share your feedback on a sticky note here.

Interested in reading the draft direction?

Pick-up a handout and tell us what policies you like and what you have concerns about.

Introduction to

LAND MANAGEMENT CLASSIFICATIONS

Land Management Classifications define the physical site conditions, operations, activities and amenities appropriate to locations within the River Valley and Ravine System.

The Land Management Classifications are based on the original Ribbon of Green Master Plan from 1992. The feedback received from the first two stages of public engagement, best practice research and site analysis helped inform the modernization and revisions to the original 1992 management units by suggesting additional uses and direction.

PRESERVATION

Protect the integrity of the natural environment and restore natural functioning with limited access and recreational opportunities.

CONSERVATION

Connect people to nature by allowing people to enjoy and appreciate the System while minimizing environmental impact and restoring ecological functioning wherever possible.

— Sub-classifications include —

Trail-Based Recreation

Facilitate a variety of trail experiences in harmony with the natural environment through a connected trail network.

Natural Recreation

Rest, linger and enjoy nature.

ACTIVE/WORKING LANDSCAPES

Facilitate gathering and recreation within the System, recognize existing uses and encourage restoration.

— Sub-classifications include —

Intensive Recreation

Provide a wide-range of recreational opportunities tailored to the river valley and ravine setting.

Agriculture + Horticulture

Recognize existing agricultural and horticultural uses.

Urban Services + City-wide Attractions

Support city-wide attractions while acknowledging the importance of urban services to accommodate a growing city.

LAND MANAGEMENT CLASSIFICATION POLICIES

During the last round of engagement, you provided feedback on the spatial arrangement of the Land Management Classifications and appropriate compatible uses, infrastructure and facilities. This feedback directed the program guidance you see here tonight.

Since the last round of engagement we have written policy to help with the planning and management of each classification and sub-classification for your review tonight.

THE POLICIES FALL UNDER THE FOLLOWING CATEGORIES:

- > **Compatible Uses**
- > **Compatible Infrastructure**
- > **Ecological Protection**
- > **Restoration and Rehabilitation**
- > **Heritage + Cultural Resources**
- > **Recreational Uses**
- > **Access + Trails**
- > **Other Uses**
- > **Education + Awareness**
- > **Maintenance + Operations**
- > **Monitor + Study**

Are there any categories missing?

Share your feedback on a sticky note here.

Interested in reading the draft direction?

Pick-up a handout and tell us if you support the policy direction, if there are policies missing or if a specific direction causes you concern.

> Your input will help revise and refine the policy direction for each Land Management Classification for the draft Ribbon of Green.

IMPLEMENTATION

The Ribbon of Green provides a framework and consistent approach to River Valley and Ravine System strategic level planning and ensures that all further planning advances the visions and priorities outlined in this Plan.

To do this effectively, a comprehensive implementation program is required. This implementation program should address the following areas.

Principles

to prioritize the expansion, development and protection of the system

- › **Acquisition:** Guidance for how to facilitate the expansion of the system.
- › **Trail Development:** Guidance to prioritize further trail development.
- › **Amenity Node Development:** Guidance to prioritize amenity node planning and the process to undertake when planning these nodes.

Actions

to implement the direction in the plan

- › Bylaw and Guidelines Amendments (e.g. natural trail standards)
- › Further Strategy and Design Work (e.g. boat launch design standards)
- › Data Sets (e.g. fish health and trail use)
- › Partnerships (e.g. universities)
- › Educational and Promotional Initiatives (e.g. appropriate trail use campaigns)
- › Resources (e.g. additional staff requirements)
- › Further Framework Development (e.g. a restoration framework)
- › Further Ribbon of Green Planning (e.g. central River Valley)

Monitoring and Evaluation

to set targets and measure progress

- › Establish indicators and targets related to ecological health, recreational use, culture and visitor satisfaction

Plan Review

to adjust the direction as needed to meet the targets

- › Review the policies every 10 years
- › Review the program guidance every 5 years

Do you have suggestions to consider?

Share your feedback on a sticky note here.

PROGRAM GUIDANCE

This section provides program guidance for the northeast and southwest reaches of the River Valley and Ravine System, specifically, the high-level trail network, amenity nodes and primary trailheads. This guidance is a starting point for future site-specific planning and is subject to change upon confirmation of on-the-ground conditions and public engagement.

Together this forms a high-level recreational and active transportation network that is a starting point for further site-specific planning. This network approach focuses human activity in appropriate locations while protecting more ecologically sensitive areas.

Amenity Nodes:

Amenity nodes are key destinations in the System that facilitate various activities, from picnicking in a natural setting to more intensive amenities, pavilions, community gathering spaces and road access.

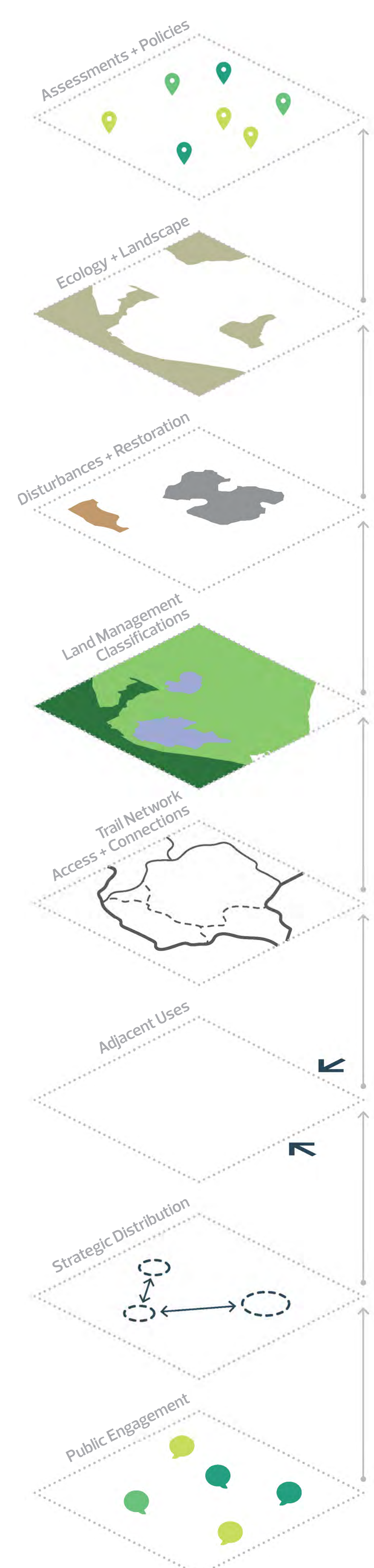
Primary Trail Heads:

Primary trailheads provide a city-wide starting and meeting point where amenities and facilities can be located, acting as staging areas for trail and river recreation and supporting entry points into the broader trail network. In contrast, local trailheads provide regular access from neighbouring communities.

High Level Trail Network:

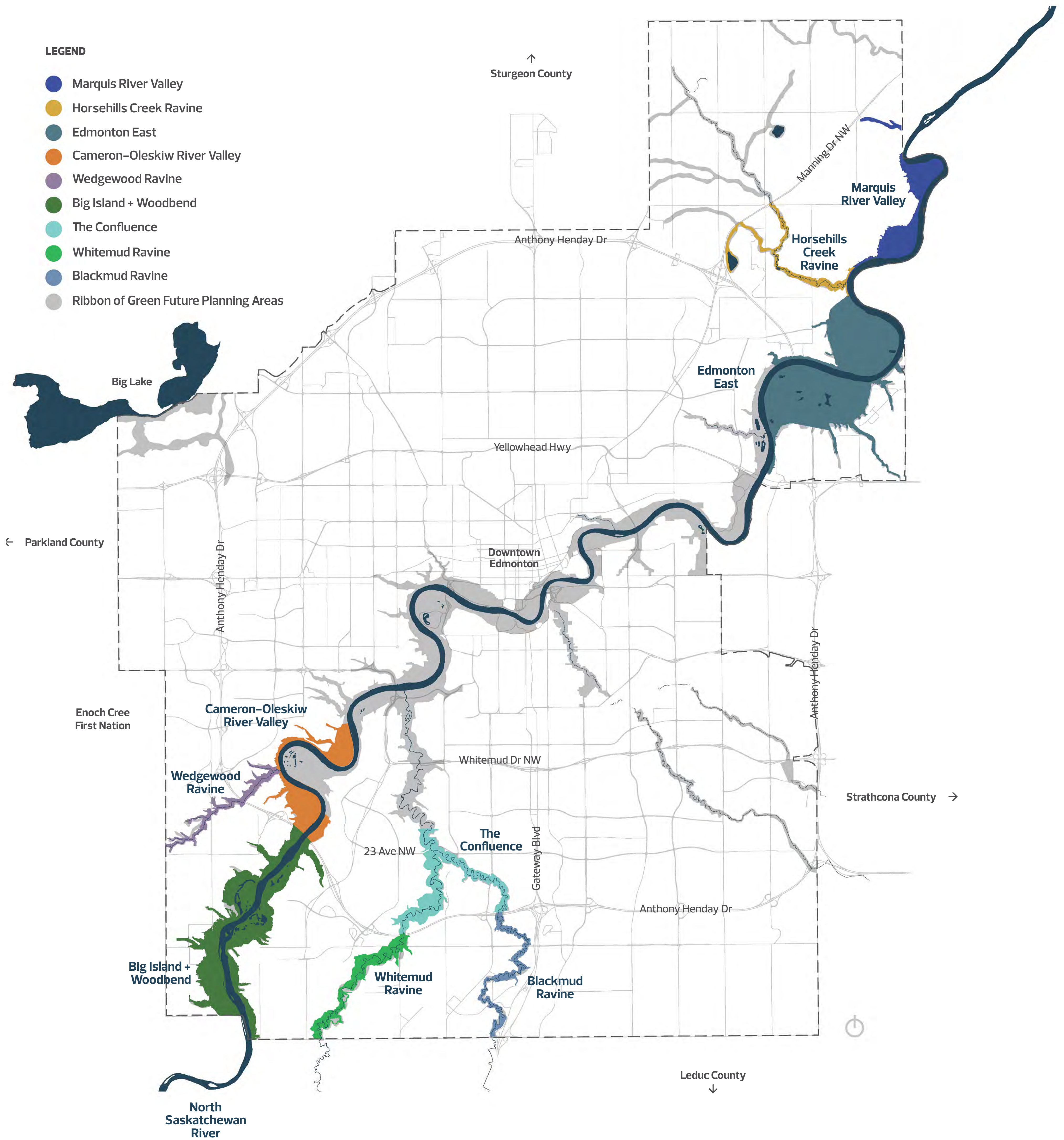
Includes access points and key regional connections. The detailed trail network, including recreational trails, will be developed through site-specific planning when on-the-ground conditions can be confirmed.

Program Guide Inputs



THE REACHES

The following panels are separated into reaches. Each reach is small enough to provide clear spatial direction while remaining at a high-level scale to show how this spatial direction relates to larger ecological and recreational networks.



CAMERON-OLESKIW RIVER VALLEY

Cameron-Oleskiw River Valley becomes an essential wildlife corridor through the restoration of native ecological communities along the river edge. Trailheads will connect residents to natural, trail-based recreation opportunities while interpretative elements, enhanced viewpoints and places to gather will offer opportunities to teach and learn about the history of the River Valley.

Oleskiw River Valley Park

PROGRAM STATEMENT:

Direction will be provided by the Oleskiw River Park Master Plan.

E.L. Smith Water Treatment Plant

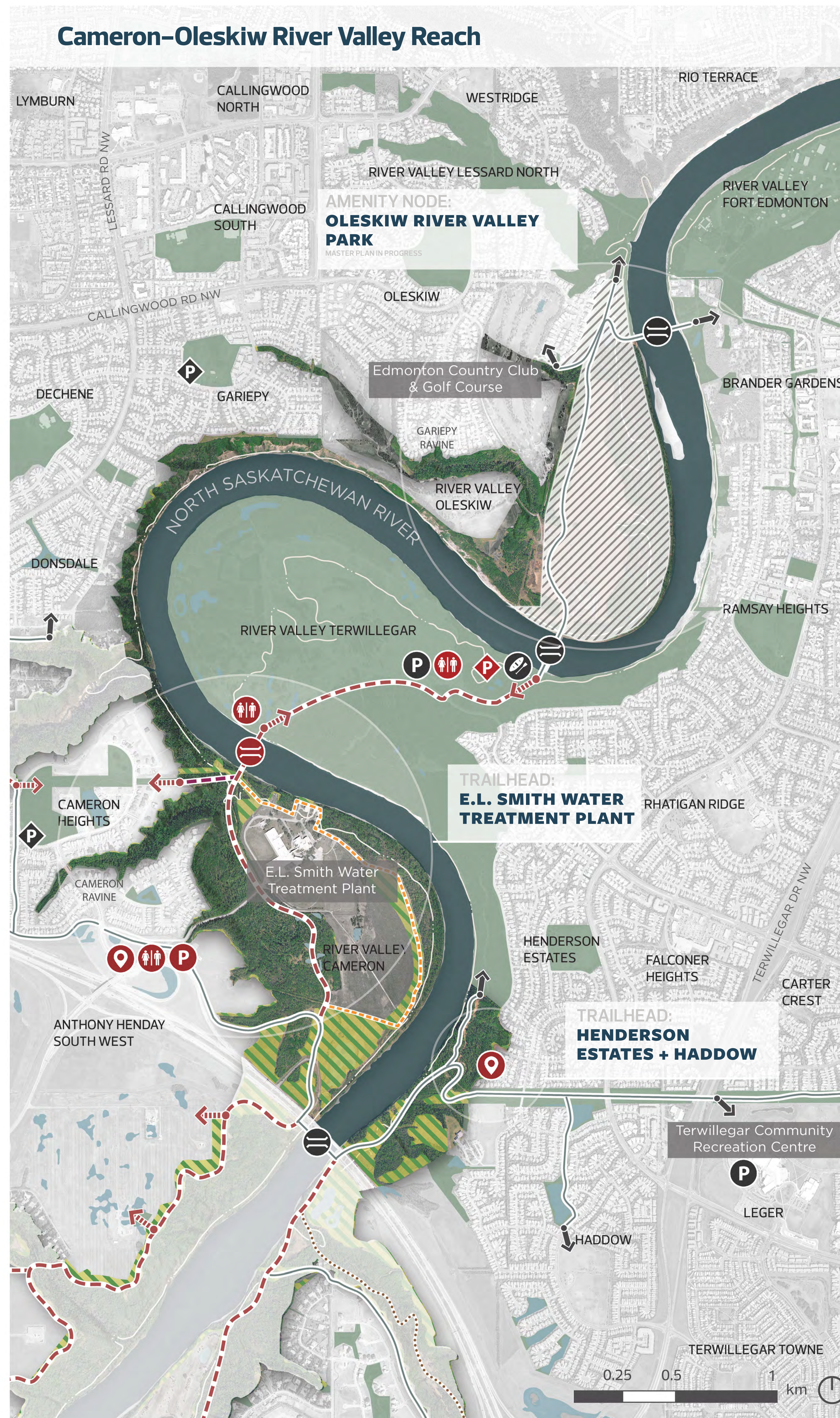
PROGRAM STATEMENT:

The trailhead takes advantage of the proposed connection to Terwillegar Park. Visitors learn about water treatment, using the proposed trail network to circle the land near the river. Partnership opportunities with EPCOR may be explored to strengthen educational components of the site. Vegetation is restored along the river's edge to enhance wildlife connectivity through the park.

Henderson Estates + Haddow

PROGRAM STATEMENT:

This trailhead is a regional multi-use trail connection that links to broader recreational and active transportation networks. It provides opportunities for historic interpretation, environmental education and ecological restoration where appropriate. This trailhead could be enhanced with interpretive elements and programming. The City may want to explore partnerships with community groups, Indigenous communities or organizations focused on healing and nature restoration.



For illustrative purposes only. To be confirmed in later plans.

What do you like about the high-level designs? Place a dot on the components you like.

What would you like to see changed? why? Share your feedback on a sticky note here.

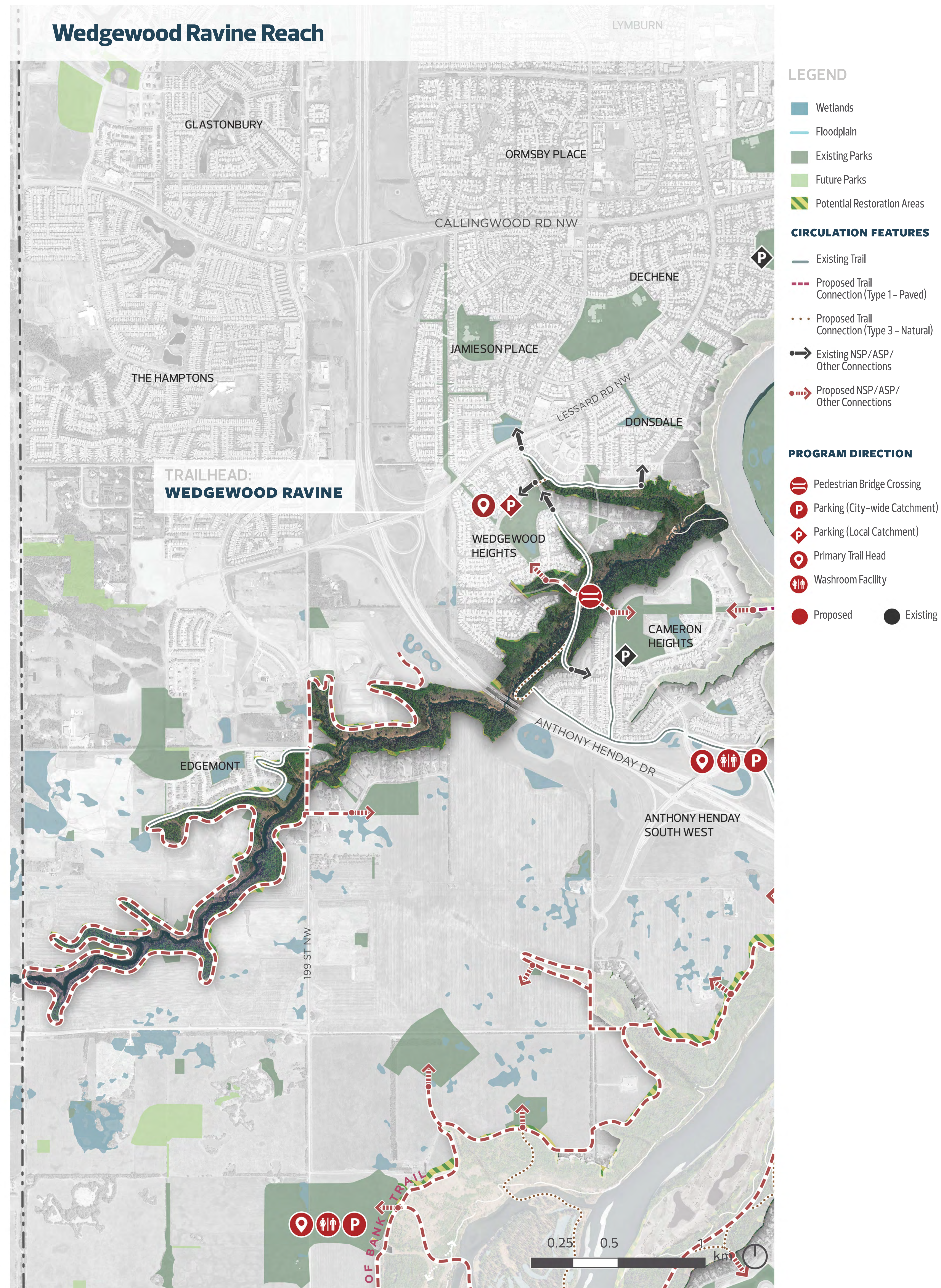
WEDGEWOOD RAVINE REACH

Wedgewood Ravine is a protected ravine system providing an active transportation link to adjacent communities and the River Valley. Existing ecosystems, wildlife corridors and geological features will be preserved, contributing to a unique nature experience in Edmonton.

Wedgewood Ravine

PROGRAM STATEMENT:

Wedgewood Ravine is an active transportation corridor in a protected ravine system. A Primary Trailhead in Wedgewood Heights provides a key connection to surrounding parkland and communities.



For illustrative purposes only. To be confirmed in later plans.

What do you like about the high-level designs? Place a dot on the components you like.

What would you like to see changed? why? Share your feedback on a sticky note here.

BIG ISLAND + WOODBEND REACH

As a connected and accessible green space network, Big Island + Woodbend will remain an essential link to regional ecological systems, including the Devon Dune Field. It will incorporate nature-focused recreation and river access for Edmonton's growing population. The integrity of this ecologically and culturally significant landscape will be protected and restored through design with nature, creating a sense of place and opportunities to celebrate the River Valley.

Rivers Edge + Windermere

PROGRAM STATEMENT:

Currently a private golf course, Rivers Edge + Windermere present opportunities to work with landowners to improve the short-term ecological functioning and connectivity of the sites. A new bridge connection to Big Island is proposed, along with a potential staging area for trail-based activities near the river crossing. Over the long-term, this amenity node may become a restored natural area with opportunities to explore trail connections, wetland restoration and low-impact recreational uses.

Big Island

PROGRAM STATEMENT:

The integration of trails and recreational amenities into one of the River Valley's most ecologically dynamic parks creates an experience unique within Edmonton. Critical trail connections and park use are balanced with the protection and restoration of sensitive natural areas for wildlife, including migratory birds and waterfowl.

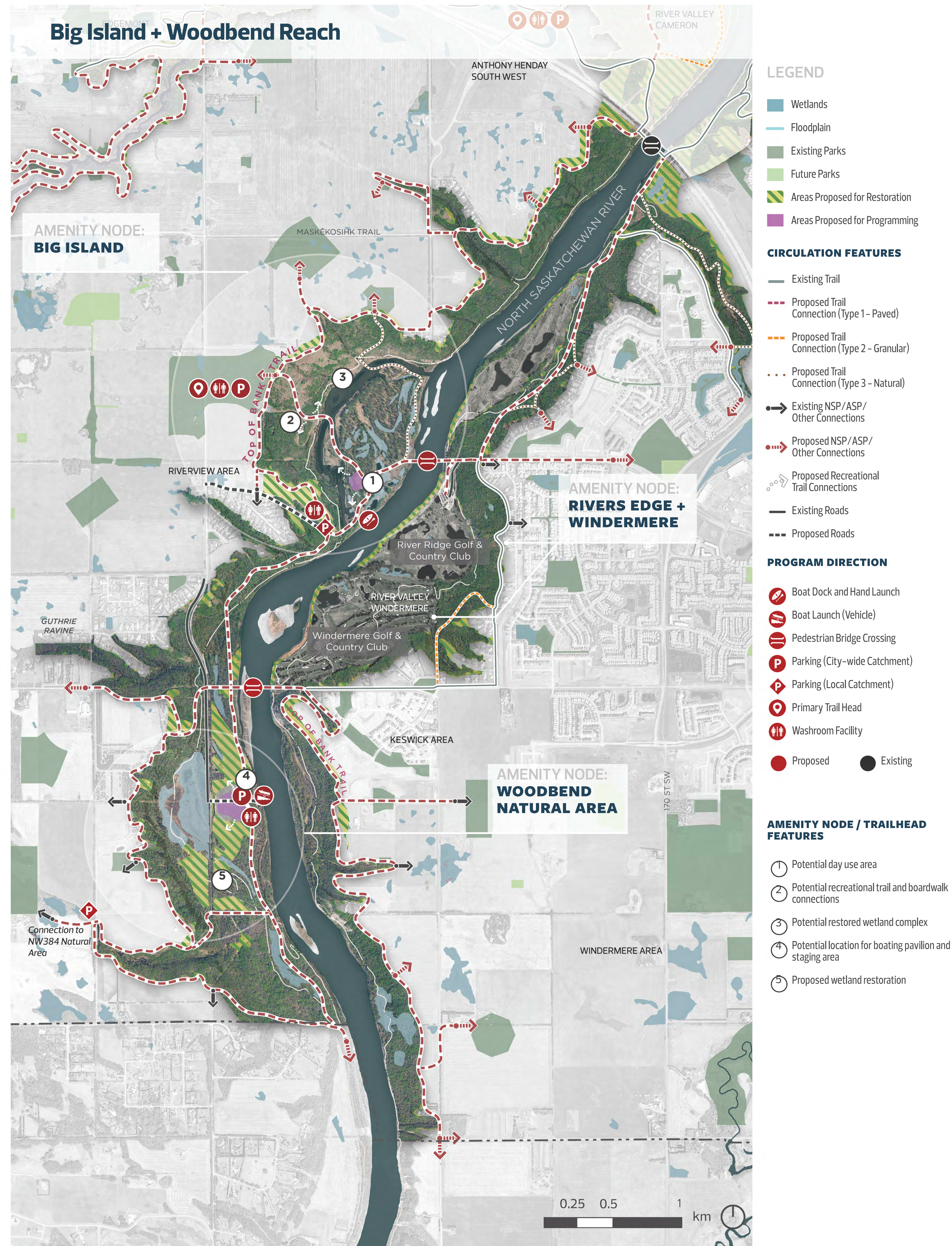
Amenities and trails around the perimeter of the park help to connect visitors to the natural setting, maintaining a separation between park users and sensitive areas while providing opportunities for wildlife viewing. The park supports small group gatherings and individual nature appreciation. As a natural area for all Edmontonians, the park includes barrier-free access, picnic amenities and an accessible hand launch. The adjacent District Park will complement the programming in Big Island and support the amenity node with access and parking.

Woodbend Natural Area

PROGRAM STATEMENT:

The western side remains a protected natural area with limited human access, focused environmental remediation and ongoing ecological monitoring of the sensitive wetland systems. This follows a strong tradition of ecological protection in this location of the River Valley. The continued protection of the wetlands provides healthy wildlife habitats and opportunities for nature education.

The eastern side becomes an ecologically dynamic park that celebrates natural processes and restoration opportunities while accommodating various cultural gatherings, recreational uses and small events that are sensitive to the natural surroundings. Low impact trails and boardwalks welcome visitors into restored natural areas. Small clearings become resting places for quiet contemplation or gathering spaces for small groups. Access to the river is formalized to accommodate a vehicle boat launch. A proposed park pavilion acts as a meeting location, educational facility, performance space and boating staging area.



What do you like about the high-level designs? Place a dot on the components you like.

What would you like to see changed? why? Share your feedback on a sticky note here.

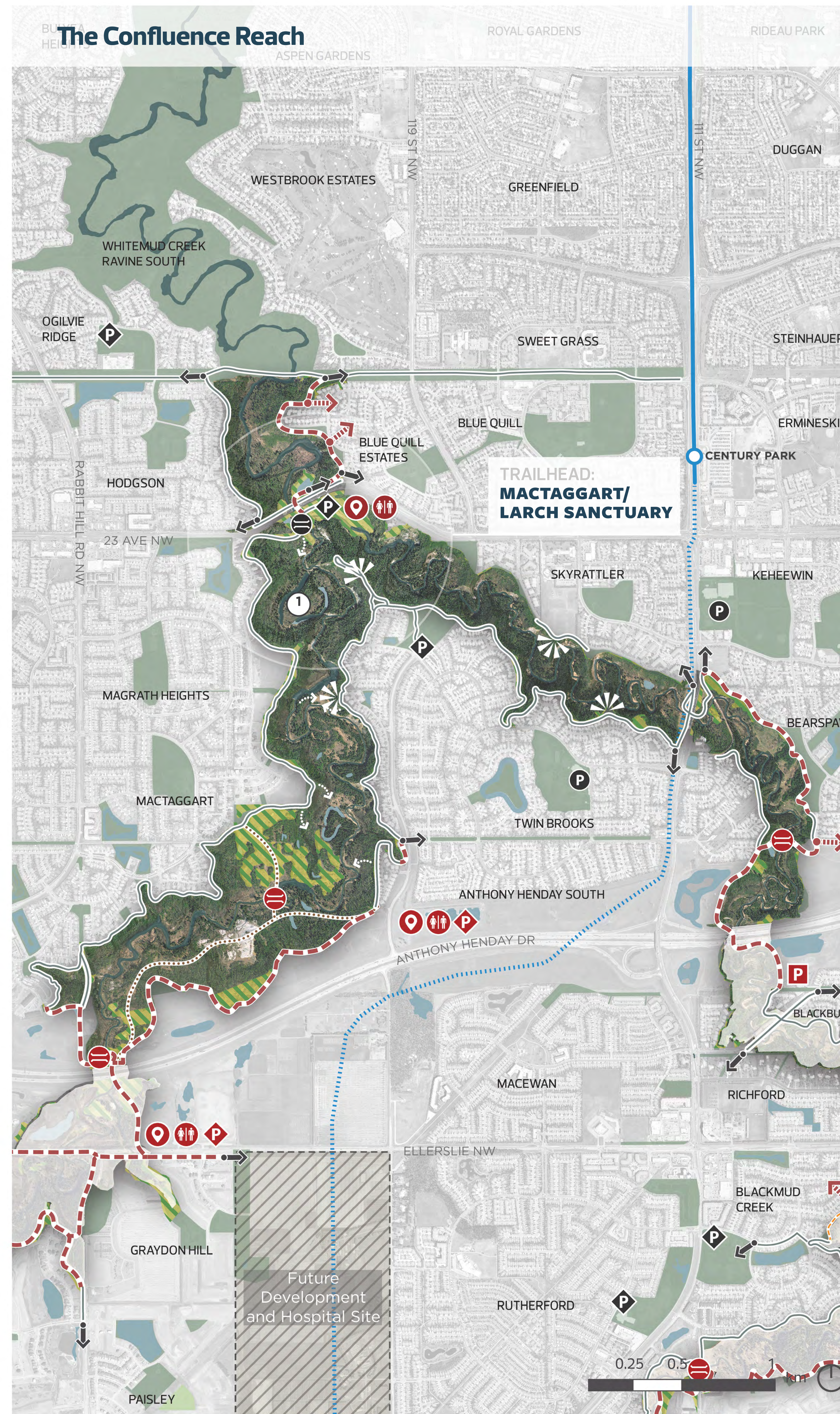
THE CONFLUENCE REACH

The Confluence will remain an essential area of protected wildlife habitat with improved trail connections from adjacent communities. As a culturally significant place, the confluence of Whitemud and Blackmud Creek will incorporate trail-based interpretive and recreational opportunities for visitors to enjoy the River Valley and learn about its layered history.

Mactaggart/Larch Sanctuary

PROGRAM STATEMENT:

This trailhead is an area for the protection of environmentally sensitive areas, supported by the existing MacTaggart / Larch Sanctuary. It provides an opportunity for people to embark on trail excursions through natural areas north of Anthony Henday Drive. Additional opportunities for the interpretation of past land uses and programming partnerships with the University of Alberta and Edmonton and Area Land Trust may be explored.



For illustrative purposes only. To be confirmed in later plans.

What do you like about the high-level designs? Place a dot on the components you like.

What would you like to see changed? why? Share your feedback on a sticky note here.

WHITEMUD RAVINE REACH

Whitemud Ravine will be protected from future environmental disturbance and will remain an important wildlife passage. The ravine will be restored wherever possible and ecological connections to the River Valley will be promoted in the surrounding landscape. Improved trail connections will immerse visitors in nature and provide access to trail-based interpretation of the surrounding land use history.

Whitemud - Anthony Henday Wildlife Crossing

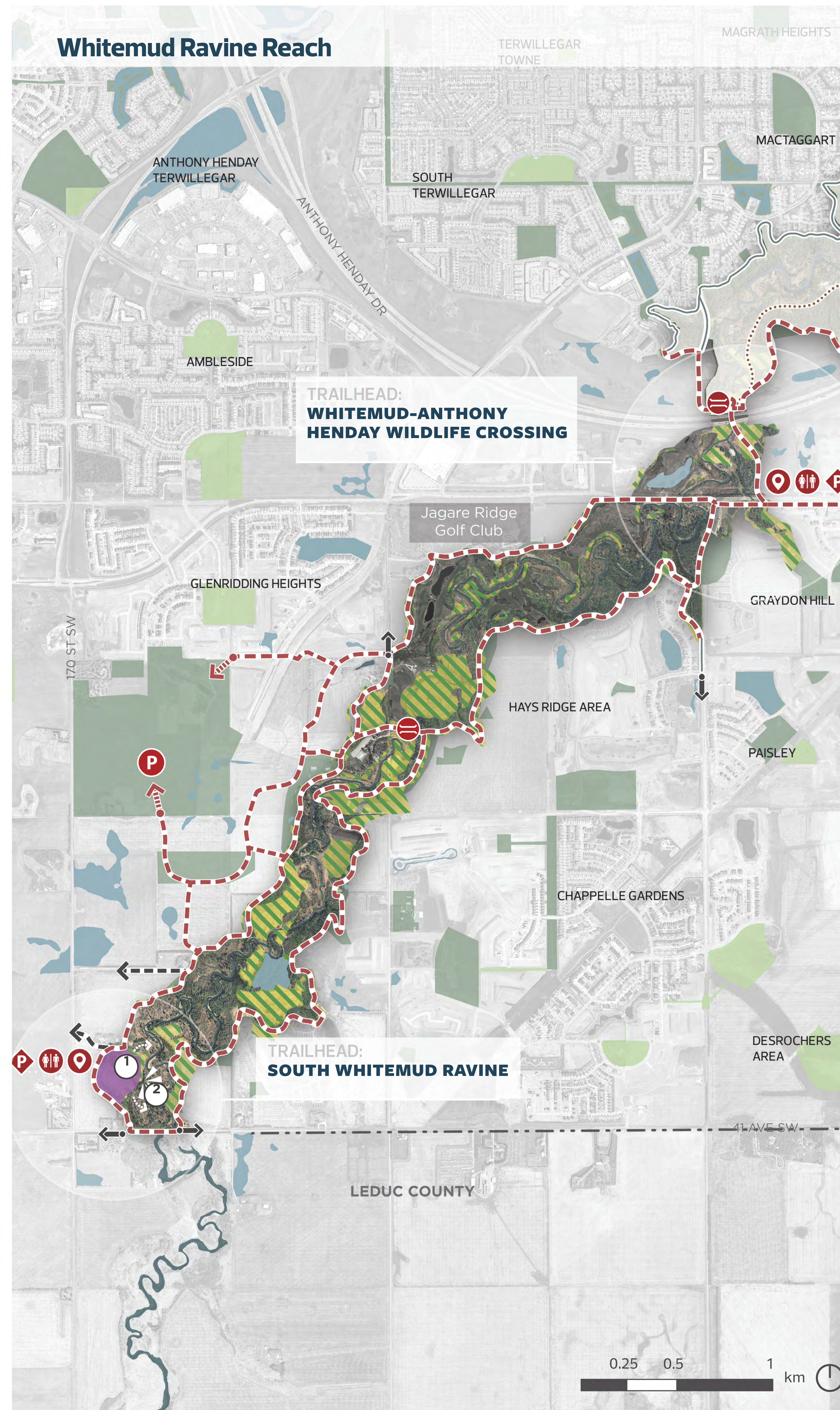
PROGRAM STATEMENT:

This trailhead presents an opportunity for ecological protection and reclamation with a focus on promoting wildlife connectivity. It also provides an opportunity for people to embark on trail excursions north or south of Anthony Henday Drive through the wildlife underpass and trail. This trailhead is supported by a washroom facility and a small parking lot.

South Whitemud Ravine

PROGRAM STATEMENT:

This trailhead is a connection to the Whitemud Ravine with opportunities to learn about aquatic habitats, the hydrological system, geology and past land uses and gather with friends and family for unstructured recreation. This amenity node offers the opportunity to appreciate the dramatic landscape.



For illustrative purposes only. To be confirmed in later plans.

What do you like about the high-level designs? Place a dot on the components you like.

What would you like to see changed? why? Share your feedback on a sticky note here.

BLACKMUD RAVINE REACH

Blackmud Ravine will become a restored ravine system, providing ecological services as well as opportunities for passive recreation and nature appreciation for the surrounding neighbourhoods. The previous histories of the site will be recognized through interpretive elements and community stewardship of the landscape.

Former Klondike Campground (Blackmud Creek)

PROGRAM STATEMENT:

All-season trails provide a local connection to this natural area. Riparian vegetation is maintained and restored where possible, and human activity is limited to reduce impacts to important bird habitat.

The heritage of the site is celebrated and physical remnants of the former campground are maintained as locations for picnicking, small cultural gatherings and other unstructured recreation. In the winter, select trails are transformed into a skating or skiing path. The park is supported with a washroom facility, lay by parking and regional trail connections.

South Blackmud Ravine

PROGRAM STATEMENT:

This trailhead is gateway and staging area for people to explore Blackmud Ravine and learn about aquatic habitats, the hydrological system and the geology of the area. The trailhead is supported by on-street parking and washroom facilities.



For illustrative purposes only. To be confirmed in later plans.

LEGEND

- Wetlands
- Existing Parks
- Future Parks
- Areas Proposed for Restoration
- Areas Proposed for Programming

CIRCULATION FEATURES

- Existing Trail
- Proposed Trail Connection (Type 1 - Paved)
- Proposed Trail Connection (Type 2 - Granular)
- Existing NSP/ASP/Other Connections
- Proposed NSP/ASP/Other Connections
- Future LRT Alignment

PROGRAM DIRECTION

- Pedestrian Bridge Crossing
- P Parking (City-wide Catchment)
- P Parking (Local Catchment)
- P On-Street Parking
- O Primary Trail Head
- ♿ Washroom Facility
- Proposed
- Existing

AMENITY NODE / TRAILHEAD FEATURES

- ⌚ Potential looped skating pathway and picnic area

What do you like about the high-level designs?

Place a dot on the components you like.

What would you like to see changed? why?

Share your feedback on a sticky note here.

MARQUIS RIVER VALLEY REACH

The Marquis River Valley will become a place for community-building, nature preservation and the re-establishment of ecological systems. The restoration of natural areas will improve wildlife connectivity in the northern reaches of Edmonton's River Valley, while the continued operations of agricultural land will support social enterprises and cultural programming. New trail connections to surrounding neighbourhoods will provide future residents with access to the River Valley and Ravine system for the passive enjoyment of nature.

The Farmstead

PROGRAM STATEMENT:

Existing social enterprises and community wellness programming at the Farmstead, including community gardens, food education programs and environmental education, are supported through public and private partnerships and programming supports. Non-invasive trail connections around the preserved old growth forest provide opportunities for nature education, historical interpretation and cultural programming.

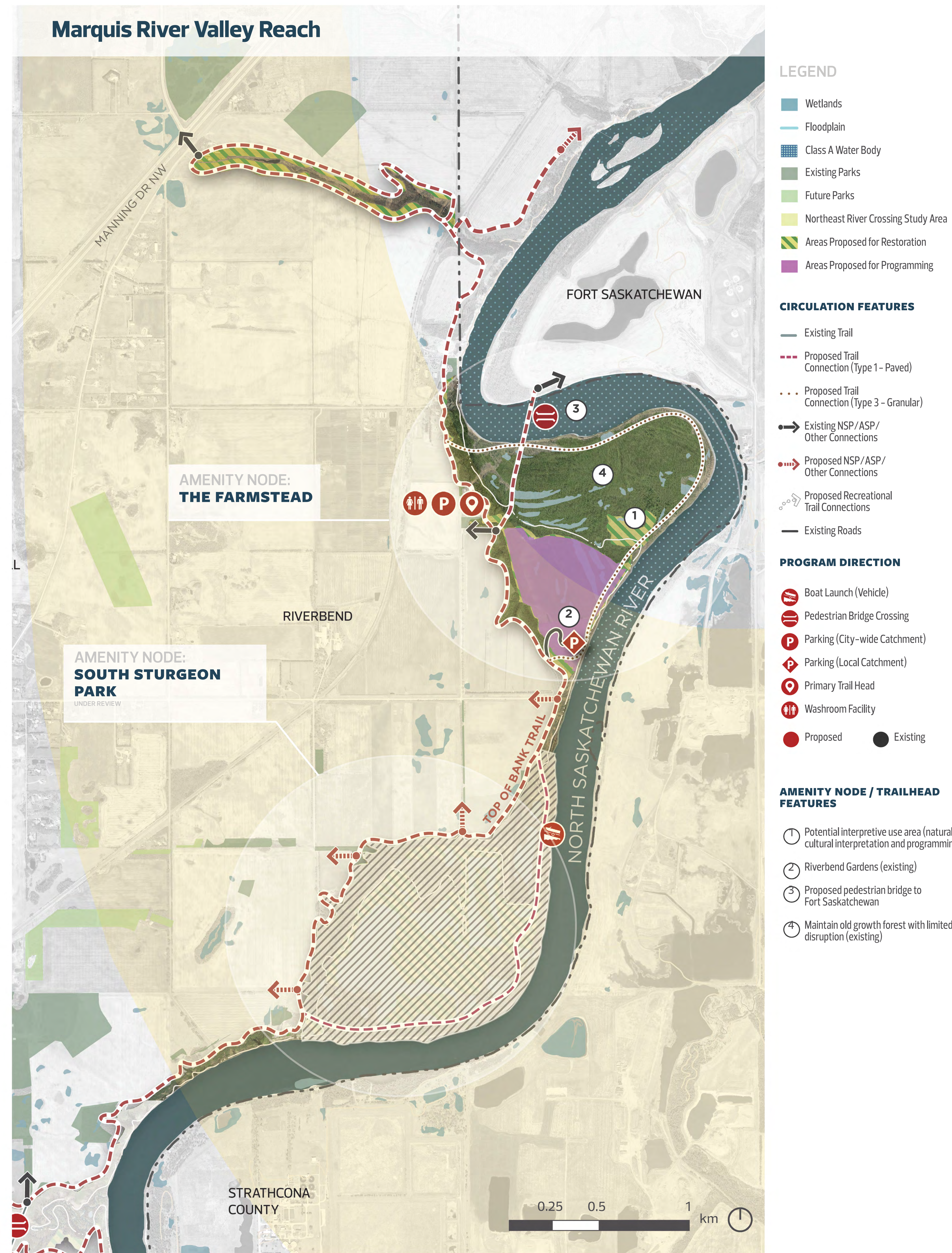
South Sturgeon Park

PROGRAM STATEMENT:

Design will be completed after the alignment of the Northeast River Crossing is complete. For more information on this project visit edmonton.ca/northeastrivercrossing

A potential program statement for the area is:

A bird sanctuary where people can enjoy, appreciate and learn about wildlife through a network of trails. Habitats are restored for various species of waterfowl. Nesting sites and habitat for migratory birds are restored on the formerly disturbed landscape. A natural trail network encircles the site, creating wildlife viewing opportunities around the site while the regional multi-use trail, accentuated by key viewpoints, runs along the top of the bank. Vehicle access and parking support an interpretive centre, vehicle boat launch, recreational trails and boardwalks for interpretive use.



For illustrative purposes only. To be confirmed in later plans.

What do you like about the high-level designs? Place a dot on the components you like.

What would you like to see changed? why? Share your feedback on a sticky note here.

HORSEHILLS CREEK RAVINE REACH

Horsehills Creek Ravine will be a restored wildlife passage connecting to the northern reaches of the North Saskatchewan River in Edmonton. The ravine's unique ecological features will be protected from disturbance and will be appreciated by visitors using the interconnected trail system for passive, trail-based recreation. Minor amenities will support greater access into the ravine system. Interpretive elements will educate trail users on the history of the river, including its role in transportation and trade.

North Horsehills Creek

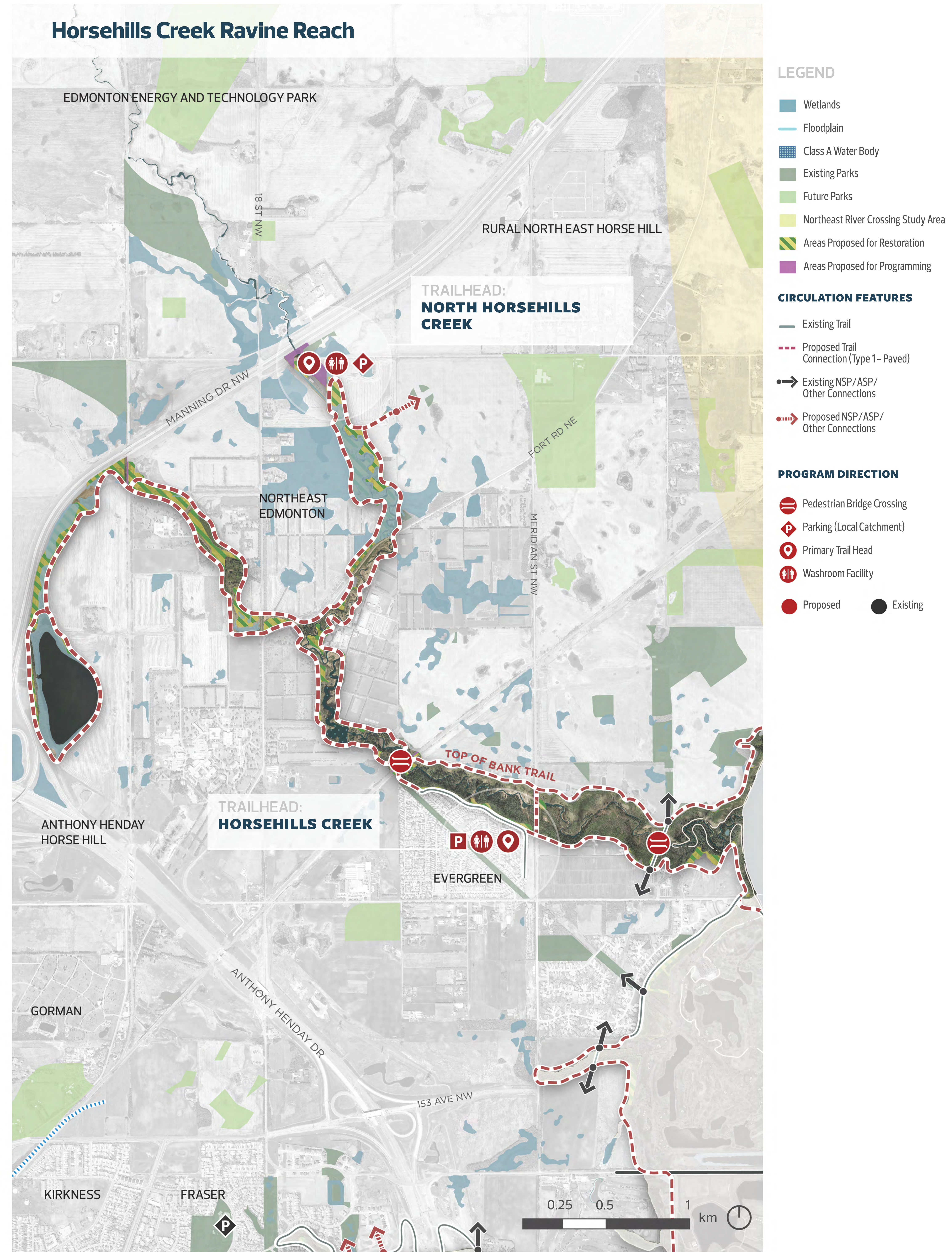
PROGRAM STATEMENT:

This trailhead is a gateway and staging area for people to explore Horsehills Creek, which includes restored areas and links to the future town centre. The trailhead is supported with a kiosk, washroom facility and a small parking lot.

Horsehills Creek

PROGRAM STATEMENT:

This trailhead and greenway provides opportunities to restore and learn about habitats and wildlife while enjoying an all-season trail system. There are also opportunities to improve wildlife connectivity under the rail corridor and interpret historical use of the ravine by the Hudson's Bay Company.



For illustrative purposes only. To be confirmed in later plans.

What do you like about the high-level designs? Place a dot on the components you like.

What would you like to see changed? why? Share your feedback on a sticky note here.

EDMONTON EAST REACH

The Edmonton East Reach will become an all-season regional destination, building upon the altered sites and conserving ecologically rich places to create opportunities for new activities and experiences in the River Valley. The area will be reclaimed as an ecological asset for the city, establishing wildlife habitat, productive landscapes and a variety of educational and recreational opportunities unique to Edmonton's River Valley.

Fraser Ravine

PROGRAM STATEMENT:

The ravine becomes a connection between Hermitage Park and the northeast lengths of the River Valley with opportunities for ecological, geological and wildlife interpretation and a pedestrian bridge.

The Quarry

PROGRAM STATEMENT:

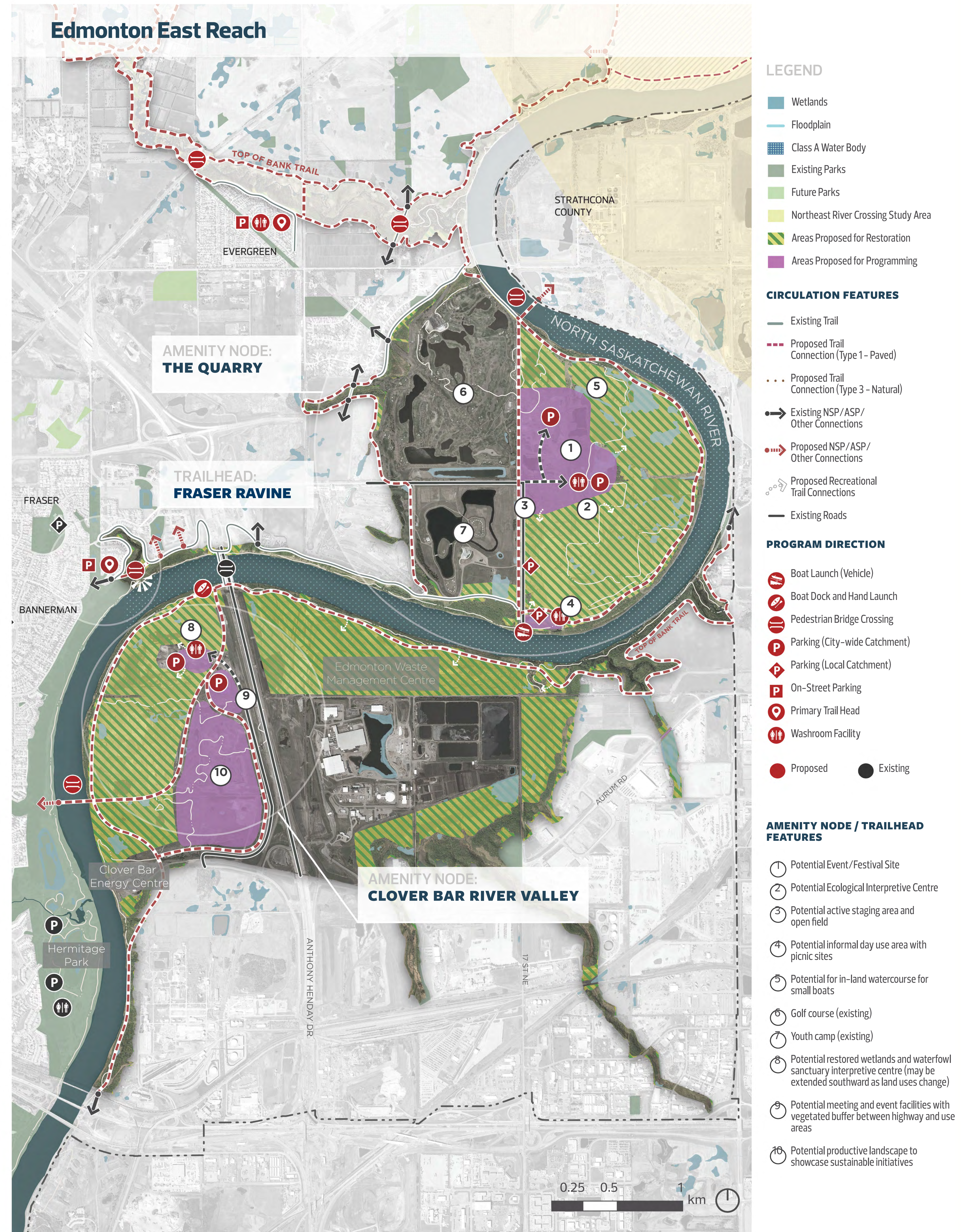
This future regional destination immerses visitors in the ecological systems of the North Saskatchewan River Valley through recreational and cultural experiences. The park can offer facilities such as a mountain bike skills course, an event space, an ecological park, a vehicle boat launch and an all-season trail network. Restoration, re-forestation and re-naturalization of the industrial landscape will improve this area's ecological health and functioning and complement the proposed development.

Clover Bar

PROGRAM STATEMENT:

Clover Bar River Valley is a destination and city-wide attraction in a reclaimed public open space. Wetlands, stormwater treatment ponds and restored forested areas are designed in cooperation with the closure plan for the gravel pit, providing an ideal setting for a river valley waterfowl sanctuary and interpretive centre. The capped landfill to the east is safely re-forested, creating opportunities for a low-impact recreational trail network, ecological interpretation and enhanced views.

Productive use of the landscape may be explored by working with landowners to showcase innovative sustainability initiatives (food systems, carbon sequestration, etc.) along side recreational opportunities, leveraging the site location, access to infrastructure and resources.



For illustrative purposes only. To be confirmed in later plans.

What do you like about the high-level designs? Place a dot on the components you like.

What would you like to see changed? why? Share your feedback on a sticky note here.

THANK YOU!

If you did not get to everything you wanted to see tonight, you can still share your ideas in a number of ways.



Online Survey

Survey open until May 23.
edmonton.ca/ribbonofgreen



Handouts + Feedback Form

Return through email or mail by
May 23
(address noted on the bottom
of the feedback form)

HOW THIS INFORMATION WILL BE USED:

The feedback that you provided tonight will inform revisions to the Draft Plan. Specifically, the policies and program guidance will be revised and updated to reflect what we heard during the engagement.

Next Steps:

Fall 2018 | Confirm Our Ribbon

After we have revised the plan, you will be able to view the final plan online or in-person during the next stage of engagement.

