

# P. ANDERSON BRICK CO.

Carried on by P. Anderson, the Largest Brick and Drain Pipe Manufacturers in Edmonton, With Capacity of 75,000 Bricks Per Day

A city's personal appearance is governed by the character and quantity of material and supply, and without facilities for turning out the things that the modern age has demanded shall enter into architectural endeavor, it would remain mediocre to say the least.

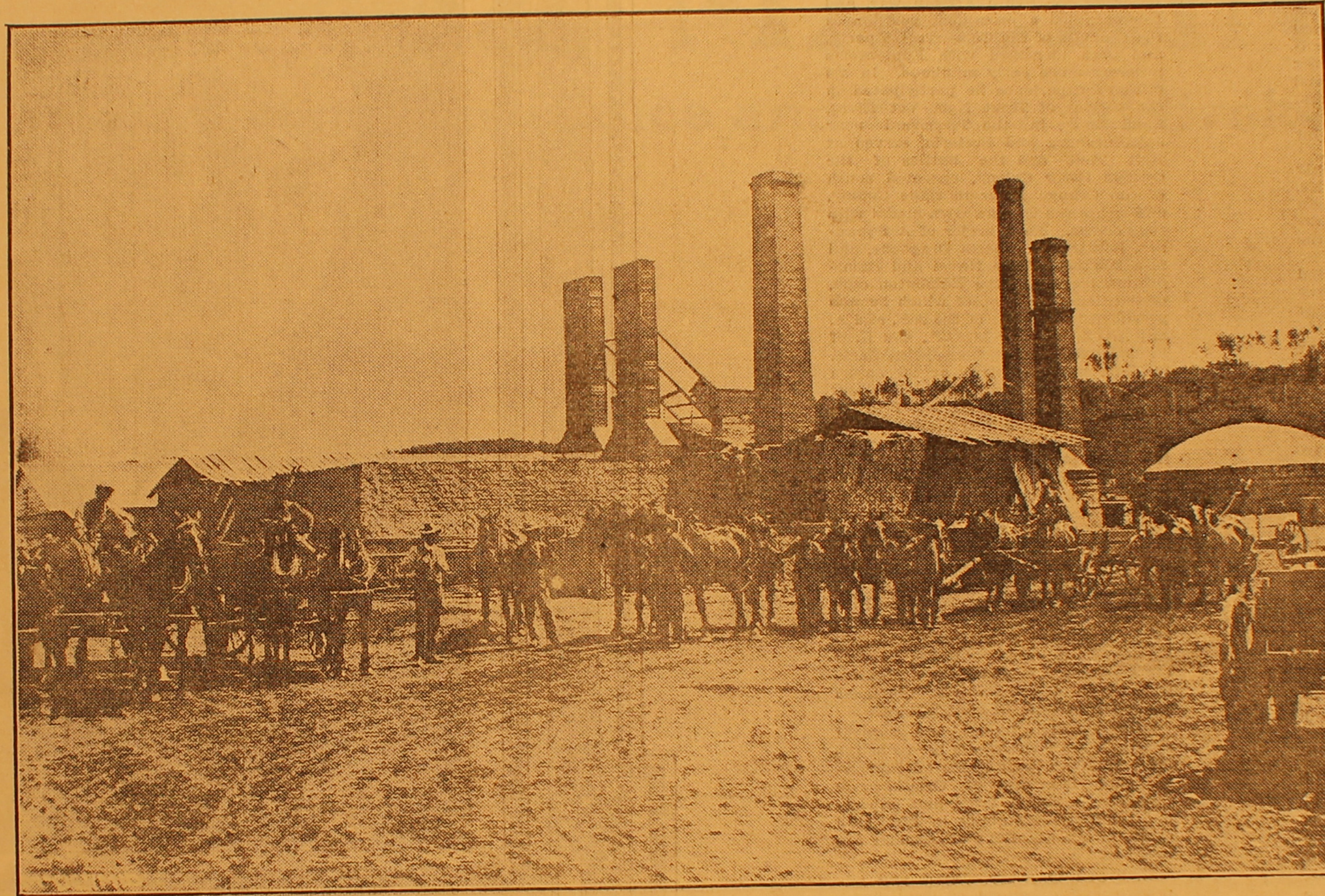
The time when four walls and a few shelves or tables sufficed to serve the needs of the public passed like Dickens's characters, and today in place of the makeshift age we find each structure carrying with it originality in design and embodying only such materials as give expression to the artistic conceptions of the architect.

The reason Edmonton has not been remiss in carrying out the modern idea of structural convenience and beautification is because far-seeing men early laid the foundation for bringing into being the facilities for providing materials. In this regard the latest ideas of design were immediately placed within reach of the building public.

The history of these institutions reflects the resourcefulness of the men who have built Edmonton the most handsome city in the West, and again emphasized the fact that when called into action in meeting public needs its earliest citizens were the first to respond. In this response payrolls were brought to Edmonton, and Nature was made to yield her treasures in raw materials. Her great clay beds were uncovered and modern machinery replaced the old hand-made methods.

One of the great institutions that is the outgrowth of this energy and foresight is the big P. Anderson brick and drain pipe works, on the south side of the river, near the low-level bridge, which is today turning out seventy-five thousand pressed brick, and where twenty-eight different designs of brick are placed upon the market from its immense kilns.

In addition to manufacturing brick the works turn out thousands of feet of drain pipe weekly, and its payroll amounts to from \$3000 to \$5000 monthly, employing between forty and forty-five men daily.



VIEW OF PLANT

The P. Anderson brick works is the outgrowth of a pioneer business, wherein a small beginning laid the foundation for the great work that was to follow. Mr. Anderson was one

of the first to realize the possibilities of building an immense city in this favored spot, and he began supplying materials with which to do it. He also made heavy investments in Ea-

monton real estate, and gave to the city the beautiful section known as Connaught Crescent, which he opened and sold to the public at a low price, thereby enriching many, while taking a fair profit for himself.

With the resources at hand he enlarged until his works are now the largest and most complete in Edmonton. In the products turned out are pressed brick in various styles for finishing, ordinary building brick, and the beautiful materials used in mantel erection and artistic home building. Possessing one of the best clay beds in Alberta, the products of these works are the embodiment of perfection in strength and quality.

In his fifteen years or more of residence in Edmonton Mr. Anderson has proved himself of the type which is thoroughly constructive in activity. Not only has he given to the city materials with which to build it, but payrolls for the merchant and means for the erection of pretty homes and establishing permanent residence by those who secure a livelihood from his works. In addition to this Mr. Anderson has given personal aid to many civic affairs, and is connected with some of the city's largest financial activities. As a recognition of his services in the Canadian militia, he was chosen captain in the One Hundred and First regiment, which honored position he now holds.

The P. Anderson brick works is the embodiment of system and economy. For a long time the management has been in the hands of Mr. W. H. Adams, captain and transport officer in the 101st Regiment. Mr. Adams is an expert in clay productions, and through his ability to introduce new ideas and serve the builders in the many departures of brick production he has made the works the source whence comes most of Edmonton's artistic building material.

The products of the P. Anderson works are shipped all over northern, eastern and western Alberta, and to all points where first-class material at minimum prices is in demand. The institution is an honor to the energy of Mr. Anderson and to those who are perpetuating its success.