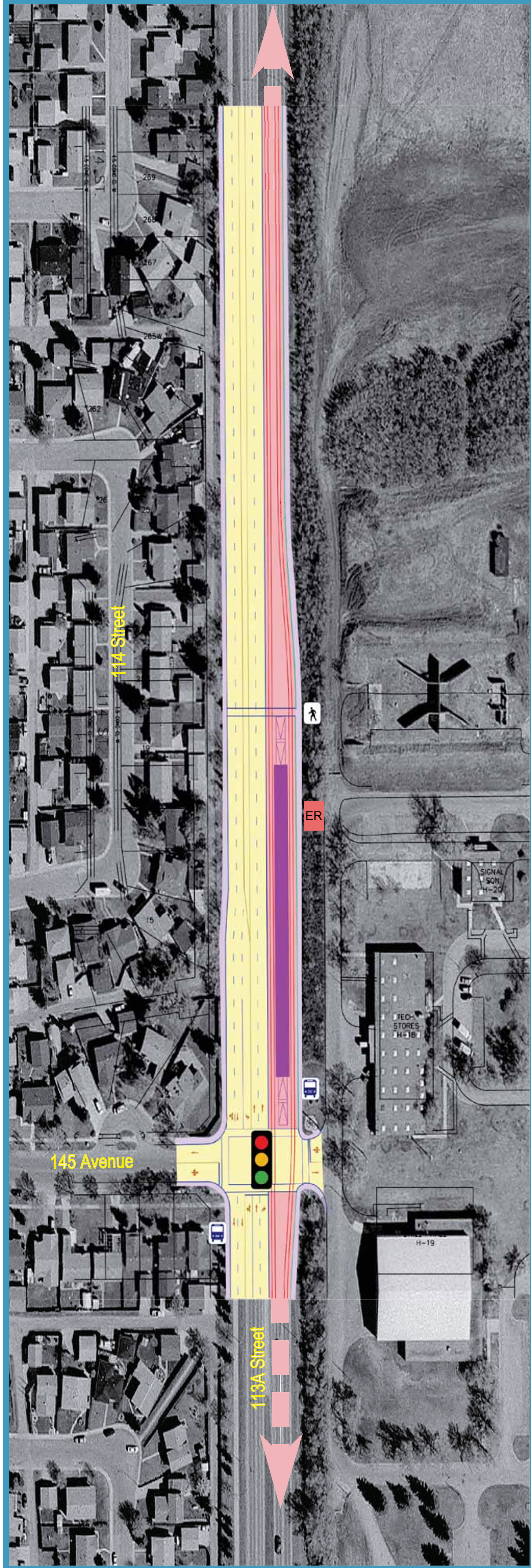
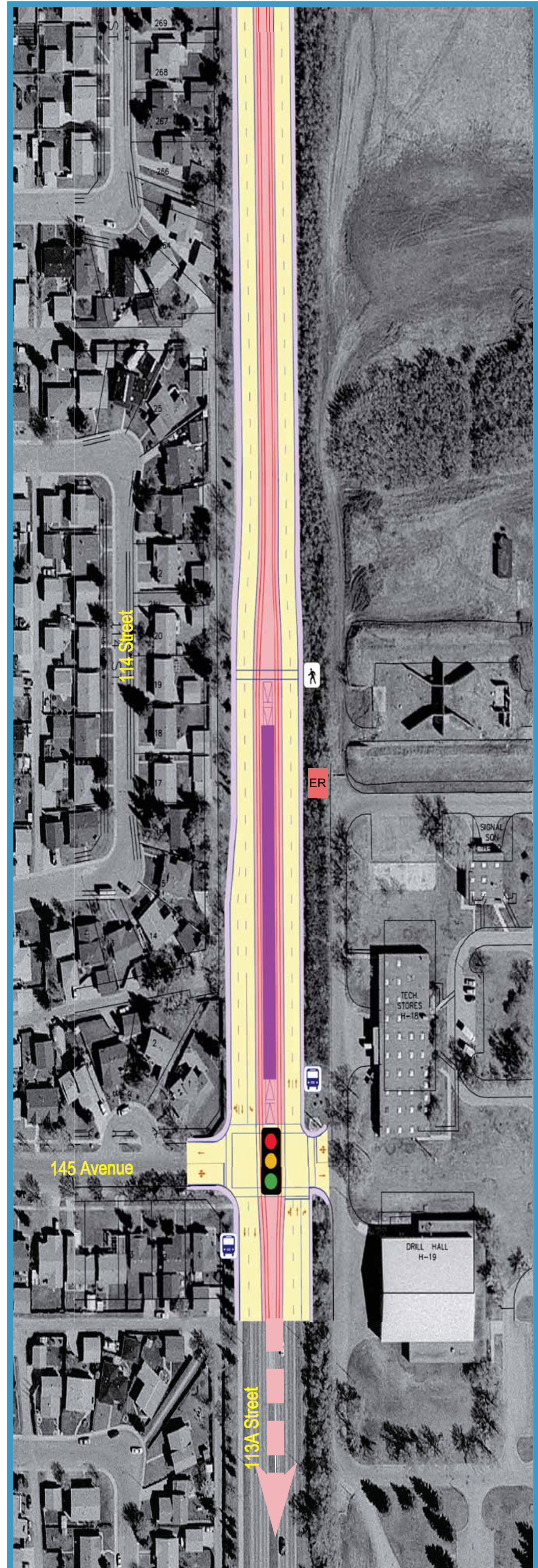


# NORTH WEST LRT - 145 AVENUE STATION

**Option 1**  
Station North of 145 Avenue - Side



**Option 2**  
Station North of 145 Avenue - Centre



**LEGEND**

- LRT at Grade
- Underground LRT
- Elevated LRT
- LRT Station
- Roadworks
- Cycle Facility
- Sidewalk
- On-Street Parking
- Property Required
- Bus Stop
- Signal Intersection
- Directional Arrows
- Pavement Markings
- Fence
- Access Closed
- Pedestrian Crossing
- LRT Equipment Room

