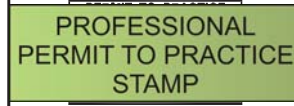


# MULTI-FAMILY AS-BUILT SAMPLE DRAWING

1510 Kensington Road N.W.  
 Calgary, Alberta, Canada T2N 4P2  
 Telephone (403) 283-1591  
 Fax (403) 270-8430  
 mail @ bcw-arch.com



ORIGINALLY SIGNED MAY 26, 2006



ORIGINALLY SIGNED MAY 26, 2006

This drawing is the property of the Architect and reproduction is prohibited without his written approval.  
 The Contractor is to check and verify all dimensions and report any discrepancies to the Architect prior to construction.  
 This drawing is not to be used for construction unless properly signed and sealed by the Architect.  
 This drawing is not to be scaled.

Consultants



Revisions	No.	Description	Date
A	1	REVISED ROAD/LOT GRADES	2007 02 28
B	1	REVISED ROAD/LOT GRADES	2007 05 10

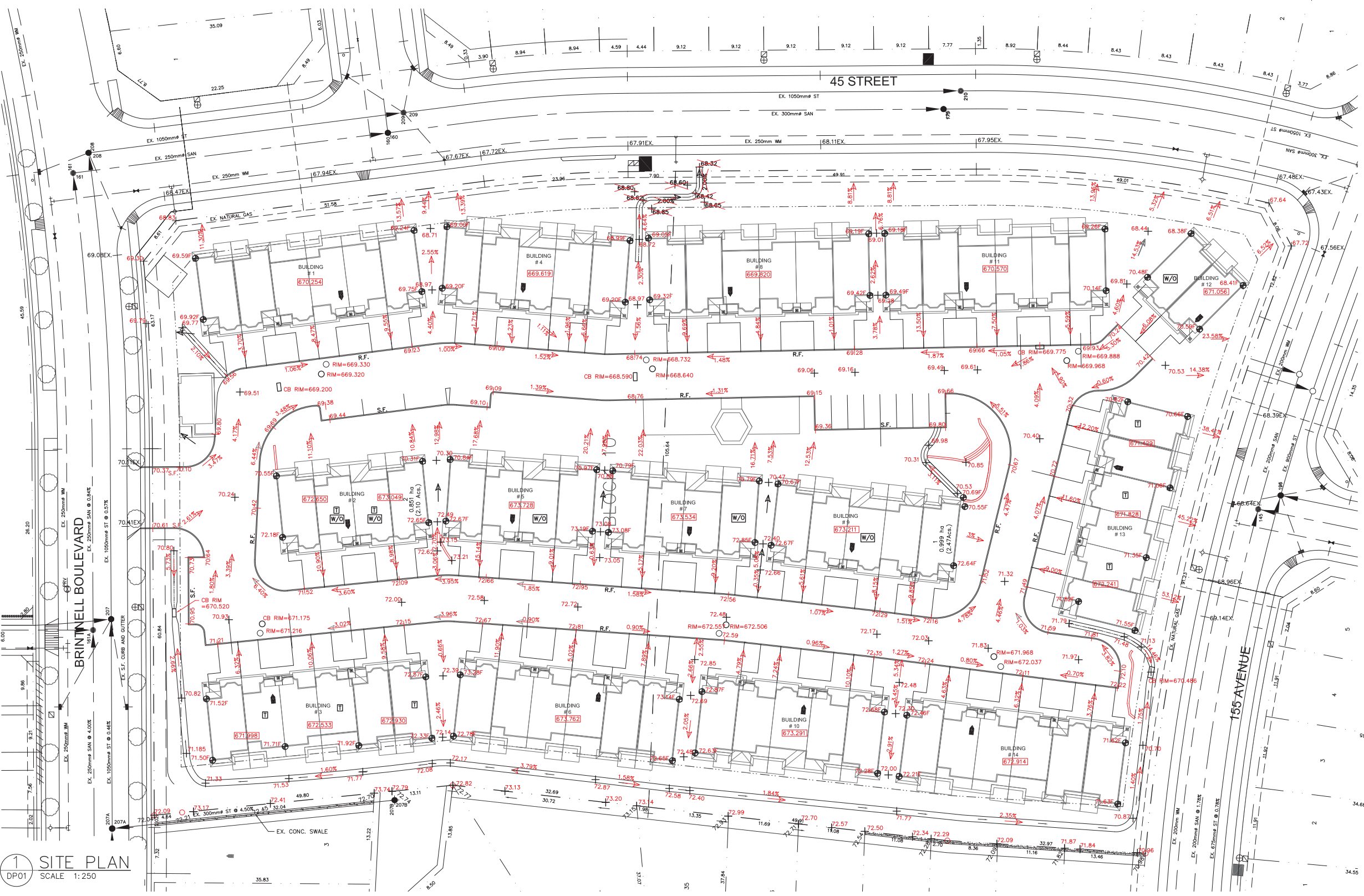
Client  
**ALDEBARAN ENTERPRISES INC.**

EDMONTON ALBERTA

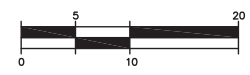
Project Title  
**BRINTNELL LANDING**  
 LOT 1&2 BLOCK 10  
 PLAN 0324198

171-BRINTNELL BOULEVARD NW

Drawing Title  
**SITE GRADING PLAN**



**1 SITE PLAN**  
 DP01 SCALE 1:250



**GENERAL NOTES:**  
 1. CONTACT ALBERTA ONE CALL PRIOR TO CONSTRUCTION START (1-800-242-3447). EXISTING UTILITY LOCATIONS AND DIMENSIONS ARE APPROXIMATE ONLY. CONTRACTOR IS RESPONSIBLE TO LOCATE, PROTECT AND RELOCATE (IF NECESSARY) ALL UTILITIES, WHETHER SHOWN ON THE DRAWING OR NOT.  
 2. ELEVATIONS SHOWN ARE GEODETIC REFERENCED TO ASCM 488692 ELEVATION 683.762. QUALITY ASSURANCE AND MATERIAL TESTING IS THE RESPONSIBILITY OF THE CONTRACTOR. THE CONTRACTOR MUST PROVIDE TEST RESULTS AS REQUESTED BY THE ENGINEER TO VERIFY DESIGN REQUIREMENTS. TESTING IS TO BE DONE TO THE CITY OF EDMONTON DESIGN AND CONSTRUCTION STANDARDS MANUAL.  
 3. THE ENGINEER'S APPROVAL IS REQUIRED PRIOR TO SUBSTITUTING CONSTRUCTION MATERIALS OR METHODS.  
 4. THE CONTRACTOR IS REQUIRED TO PROVIDE A "RED LINE" AS-BUILT DRAWING UPON CONSTRUCTION COMPLETION.  
 5. SITE SERVICING CONTRACTOR IS TO CO-ORDINATE TIE-INS TO BUILDINGS WITH MECHANICAL CONTRACTOR. SITE SERVICING CONTRACTOR IS RESPONSIBLE FOR SERVICE INSTALLATIONS UP TO THE FOUNDATION WALL.  
 6. CONTRACTOR IS TO ENSURE OFFSITE DRAINAGE DOES NOT FLOW INTO DEVELOPED AREAS.

**SITE GRADING AND SURFACE WORKS NOTES:**  
 1. ALL PROPOSED GROUND ELEVATIONS AND GRADES SHOWN ARE FINAL ELEVATIONS, INCLUDING ASPHALT, CONCRETE AND SOD.  
 2. CONTRACTOR SHALL CONFIRM ALL TIE-IN LOCATIONS AND ELEVATIONS PRIOR TO CONSTRUCTION.  
 3. TIE-IN ALL NEW SIDEWALKS AND ACCESS APRONS TO EXISTING CURBS, GUTTERS, ROADS, AND SIDEWALKS. ALL TIE-INS MUST BE DONE TO THE SATISFACTION OF THE ENGINEER.  
 4. ALL FILL MATERIALS PLACED ON SITE DURING ROUGH GRADING MUST BE COMPACTED TO 98% OF THE CORRESPONDING STANDARD PROCTOR DENSITY IN LIFTS NOT EXCEEDING 150mm IN COMPACTED THICKNESS AS DETERMINED AND VERIFIED BY APPROPRIATE LABORATORY AND FIELD TESTING.  
 5. ALL BASE COURSE MATERIALS UTILIZED FOR ASPHALT PAVEMENT STRUCTURES MUST BE COMPACTED TO 100% STANDARD PROCTOR DENSITY, USING VIBRATORY EQUIPMENT AND IN LIFTS NOT EXCEEDING 150mm IN COMPACTED THICKNESS.  
 6. SPLASH PADS ARE TO BE UTILIZED AT ALL DOWNSPOUT LOCATIONS.  
 7. POSITIVE DRAINAGE MUST BE PROVIDED AWAY FROM THE BUILDINGS AT A MINIMUM 10% SLOPE OVER THE FIRST 1.5m FROM THE OUTSIDE FACE OF THE BUILDING.  
 8. ALTERNATIVES TO PROVIDE CONSTRUCTION COST SAVINGS WILL BE ACCEPTED FOR REVIEW.

- LEGEND**
- 73.26 LIP OF GUTTER ELEVATION
  - ← 1.5% DRAINAGE DIRECTION & SLOPE
  - 71.34 F FINISHED TOP OF SOD ELEVATION AT FOUNDATION (F)
  - 72.63 SPOT ELEVATION
  - 673.720 MAIN FLOOR ELEVATION
  - W/O WALKOUT
  - T TIERED FOOTING
  - HV HEAVY DUTY ASPHALT
  - LD LIGHT DUTY ASPHALT
  - BL BOREHOLE LOCATION
  - R.F. ROLL FACE CURB
  - S.F. STRAIGHT FACE CURB
  - 1.0m GRASS SWALE
  - RETAINING WALL

PROFESSIONAL SEAL	AS-BUILT	
	CONTRACTOR	FROM TO
NOVEMBER 13, 2009	UNDERGROUND: WAINWARD CONSTRUCTION MANAGEMENT INC.	06/23/06 07/21/06
	SURFACE: DEFORD CONTRACTING INC.	08/08/06 08/18/06
	EARTHWORKS: NOVEN	06/05/06 06/26/06

**RECORD DRAWING**  
 THIS DRAWING HAS BEEN PLOTTED FOR RECORD DRAWING PURPOSES. FOR CONSTRUCTION DRAWING SEE ISSUED FOR CONSTRUCTION SET.

**AS-BUILT NOTE:**  
 AS-BUILT DIMENSIONS, MEASUREMENTS AND OTHER DETAILS CONTAINED IN THIS AS-BUILT DRAWING HAVE BEEN OBTAINED BY MM GROUP LIMITED (MM) FROM VARIOUS SOURCES. THIS INFORMATION REPRESENTS THE BEST INFORMATION AVAILABLE TO MM AT THE TIME OF PREPARATION OF THIS AS-BUILT DRAWING. MM DOES NOT IN ANYWAY REPRESENT OR WARRANT THAT THE INFORMATION IS ACCURATE AND ASSUMES NO RESPONSIBILITY OR LIABILITY FOR ANY ERRORS OR OMISSIONS CONTAINED THEREIN.

**ROAD STRUCTURE**

<b>LIGHT DUTY AREAS</b> ASPHALTIC CONCRETE STAGE 1 (ACR)-35mm ASPHALTIC CONCRETE STAGE 2 FAC(ACR)-65mm GRAVEL BASE-20mm CRUSH-200mm 150mm SUBGRADE PREPARATION	<b>HEAVY DUTY AREAS</b> ASPHALTIC CONCRETE STAGE 1 (ACO)-35mm ASPHALTIC CONCRETE STAGE 2 FAC (ACO)-100mm GRAVEL BASE-20mm CRUSH-250mm 150mm SUBGRADE PREPARATION
--	--

2009-11-13

S:\Projects\4133 Brintnell Multi Site\CAD Drawings\As-Built\4133 LOGR-AS REV 2009 11 13.dwg  
 XREF: \\VENUS\LAND PROJECTS\R2\4133\531\DWG\3531\REVISED SITE PLAN 2006 02 14.DWG

Drawn by CS/CP Checked by CH  
 Date 20060525  
 Scale AS SHOWN  
 Project No. 4133.2  
 Drawing No.

**41332-C-02**

ISSUED FOR CONSTRUCTION : JUNE 21, 2006