



60053

EA-500-339



60044

EA-500-343



60023

EA-500-338



60045

EA-500-344

157

60017



Dylon-May Co.  
60399  
JASPER ALBERTA

60399

EA-500-314



Dylon-May Co.  
60809

JASPER AVE.  
MAY 4, 1900

60809

EA-500-13



Dylon-May Co.

JASPER AVENUE, EDMONTON.

EA-500-3



60792

EA-500-113



60061

EA-500-114

58.33



110 mm

148mm 98

33

EA-500-155

135%



60007

EA-500-158



60013

EA-50D-172



60997

EA-50D-167



60726

EA-500-177



60003

EA-500-168



60712

EA-500-170



60713

EA-500-173



60686

EA-500-171



60024

EA-500-191

62% (B) PAGE 8



60344

EA-500-149



EA-500-169

5109



61016

EA-500-18

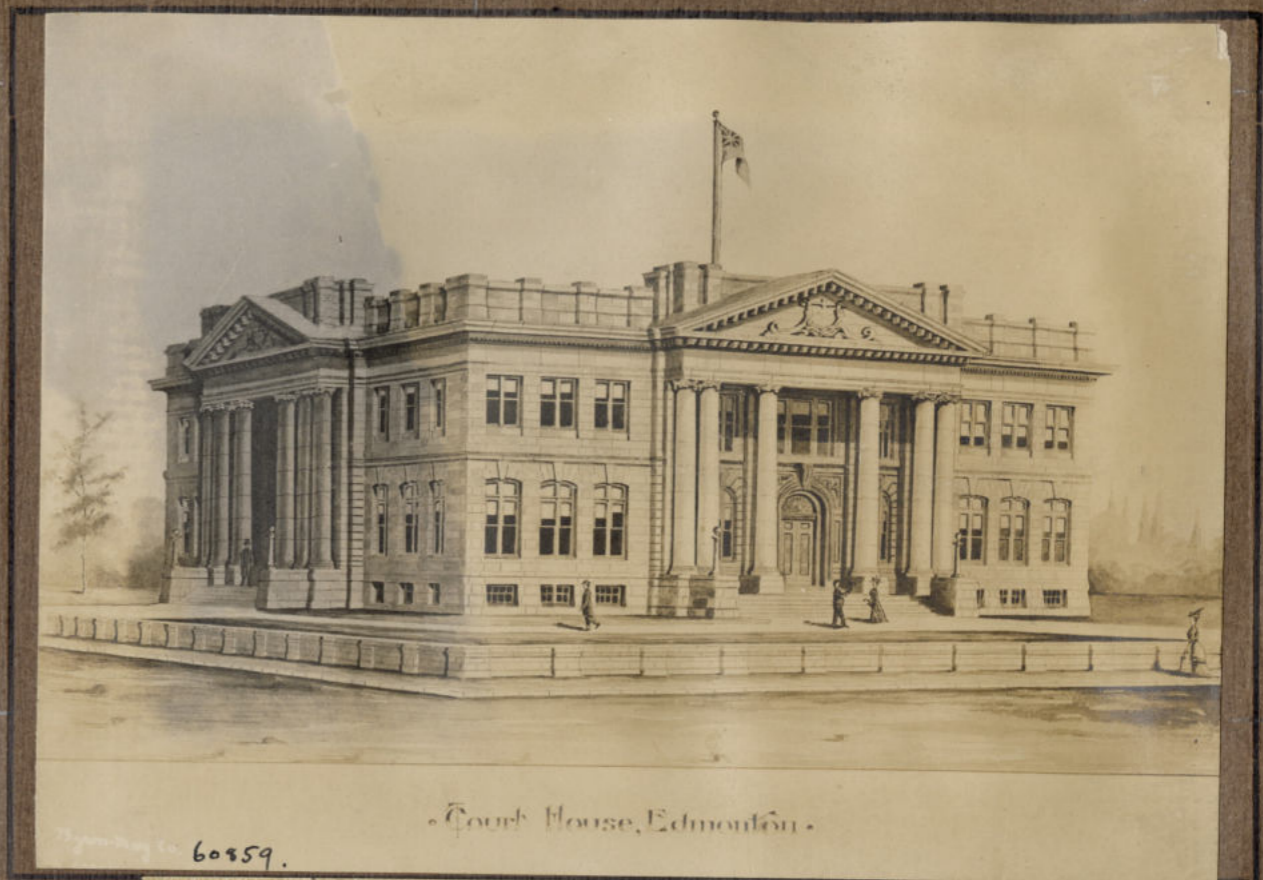
6



60750

PAGE  
A 8 52% X  
↓

EA-500-82



60859.

• Court House, Edmonton •

PAGE 10 ↑ 52% #5

EA-500-154



61717

EA-500-153



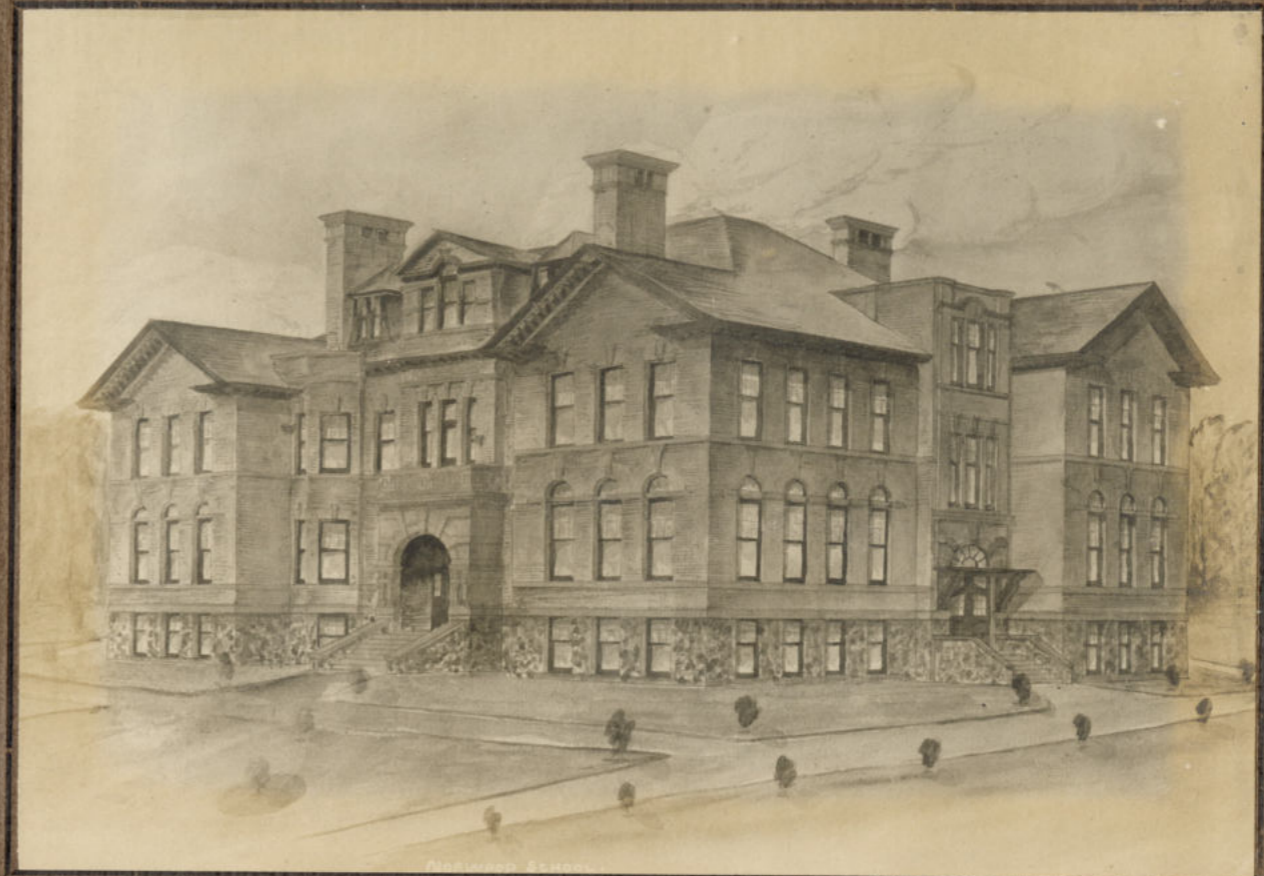
60998

EA-500-107



60082

EA-500-104



60870

EA-500-109



60066

EA-500-110



60062

60062

EA-500-106





60461

EA-500-74



60463

EA-500-80



60465

EA-500-209

Along the Sperrychewon River  
Dunham-Mary Co.  
1904



60462

EA-500-73

Dunham-Mary Co.  
60462

CITY OF EDMONDSON,



Photom. Tracy Co. 60581

GOLF LINKS, EDWARDSVILLE

60581

EA-500-76



Photom. Tracy Co. 60980

PHOTO MADE JULY 15, 00, EDWARDSVILLE, ALA.

60980

EA-500-226



Photom. 60011

60011

EA-500-227



Photom. 60709

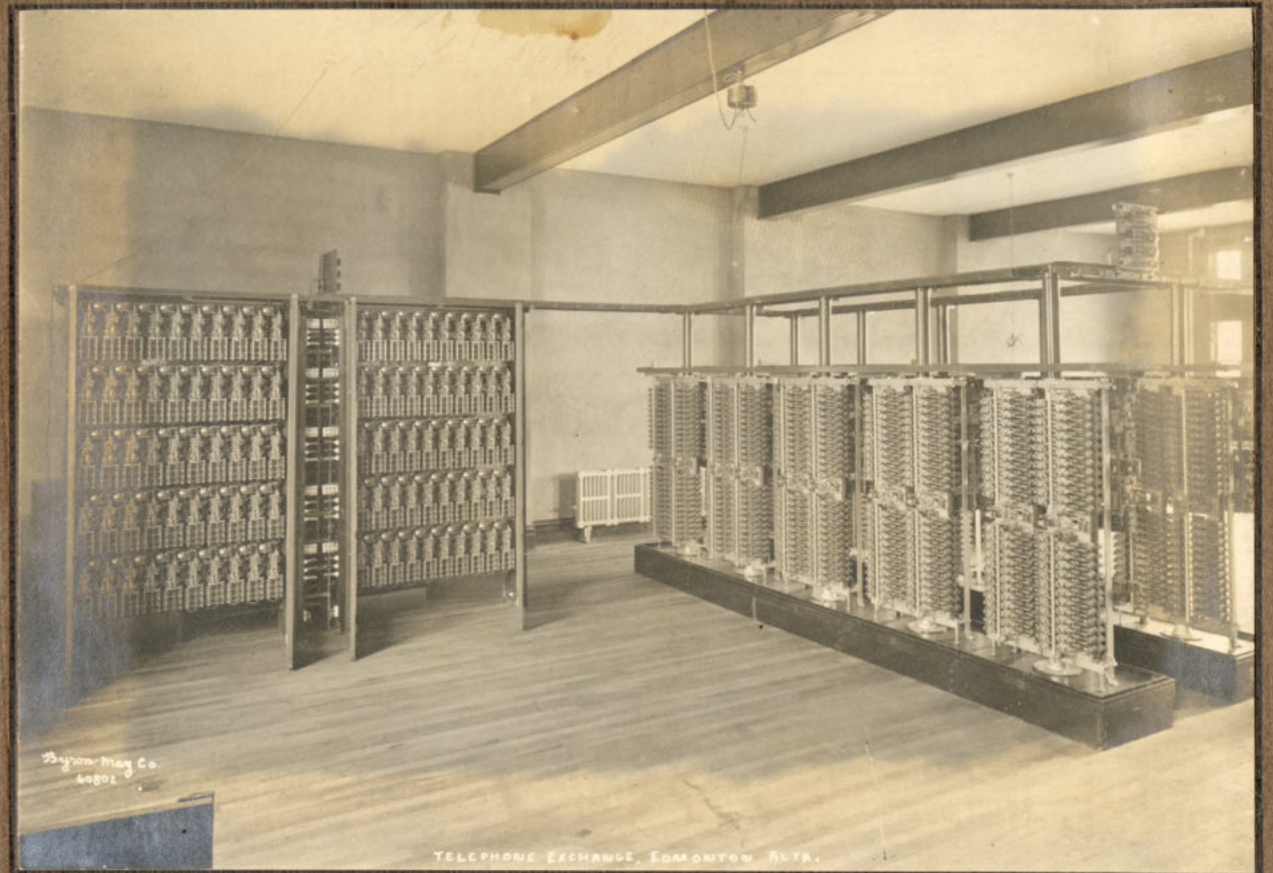
60709

EA-500-212



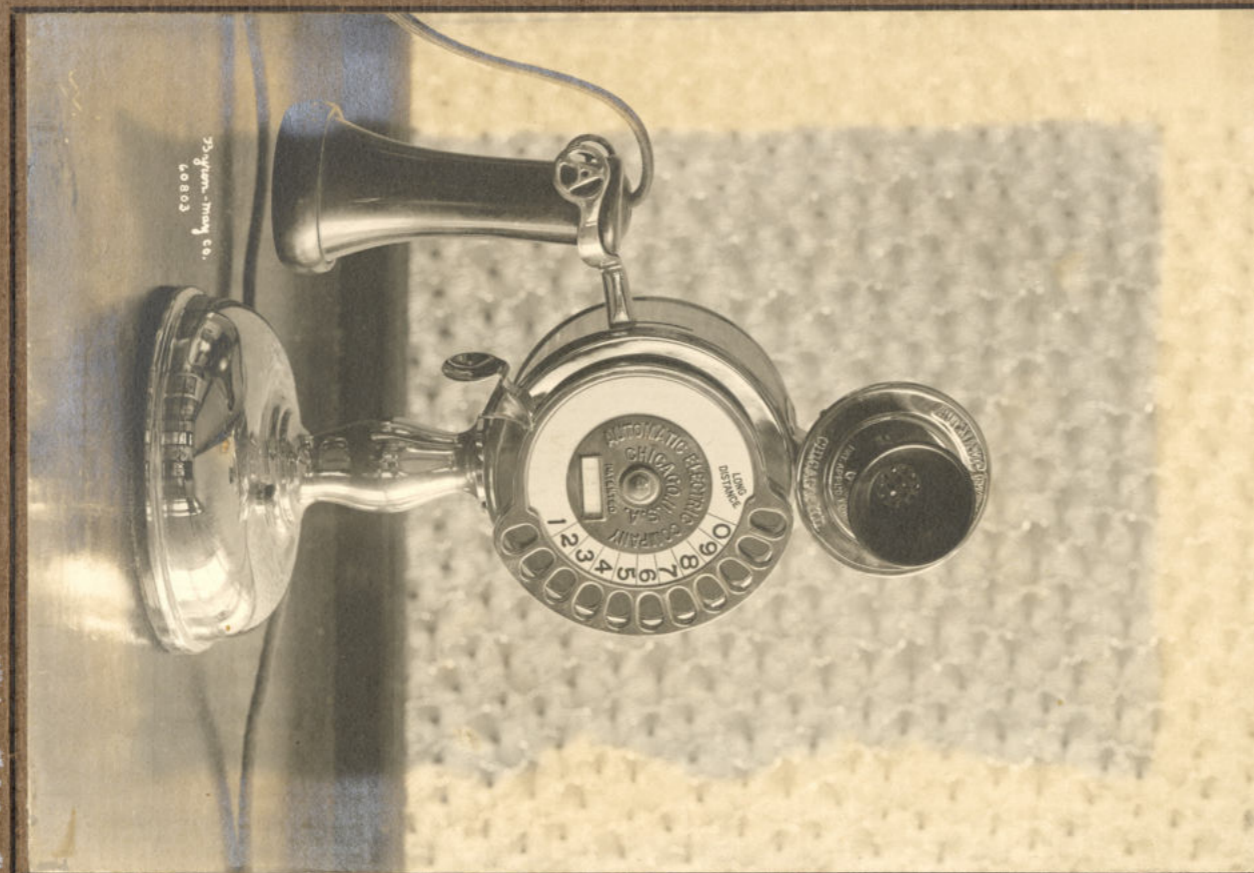
60801

EA-500-389



60802

EA-500-387



60803

EA-500-398



60363

EA-500-310



60471

EA-500-400



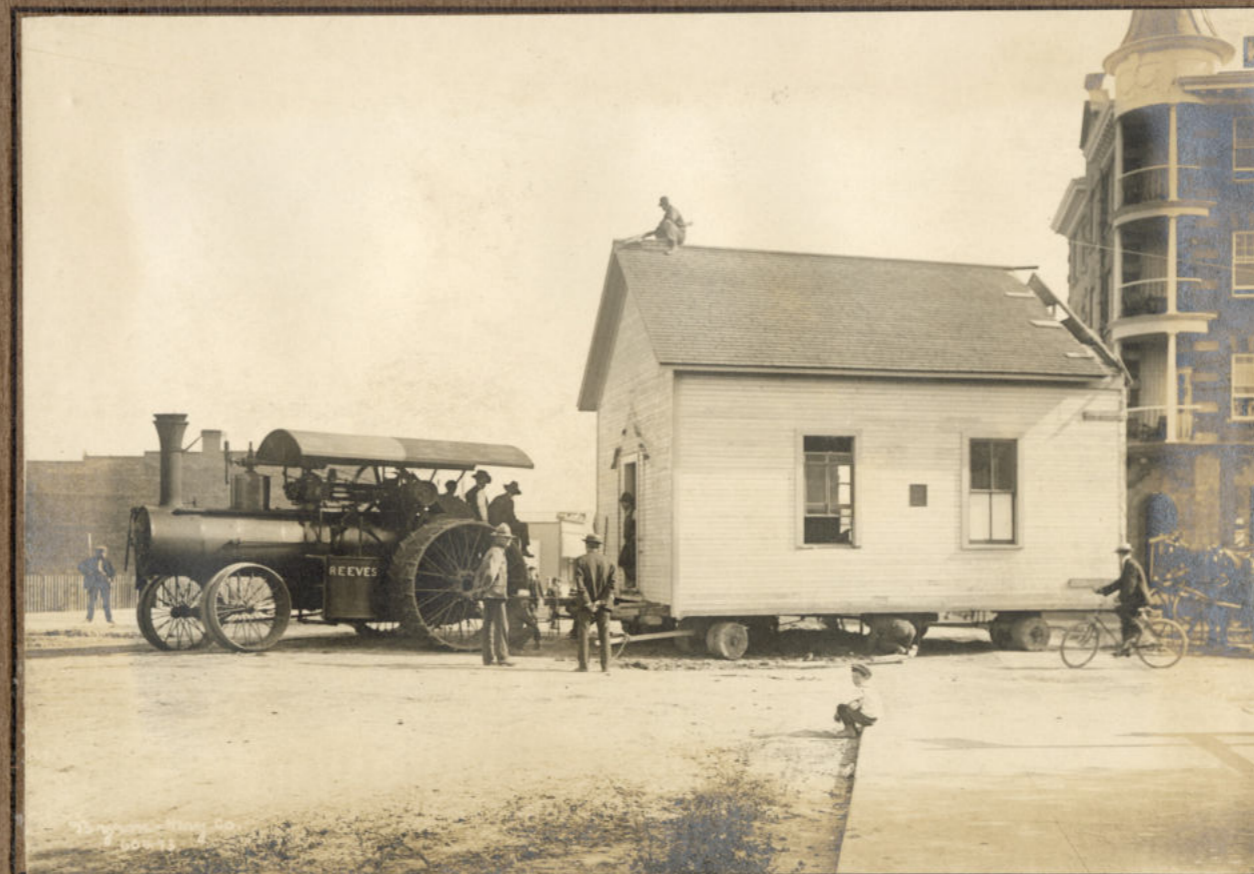
60056

EA-500-332



EA-500-360

60064



60473

EA-500-353



60576

EA-500-269



60580

EA-500-211



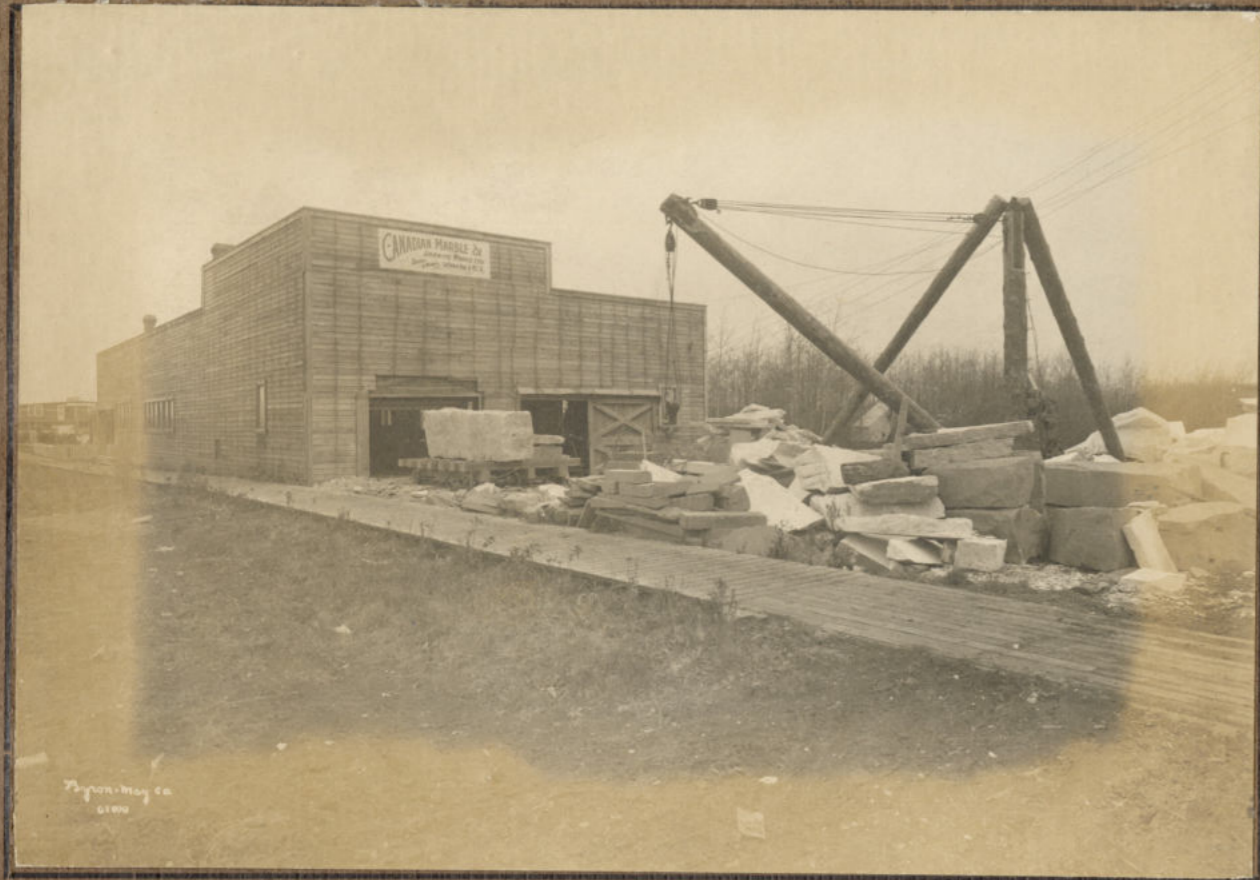
60452

EA-500-186



60454

EA-500-187



61000

EA-500-141



61010

EA-500-188



60490

EA-500-142



60489

EA-500-145



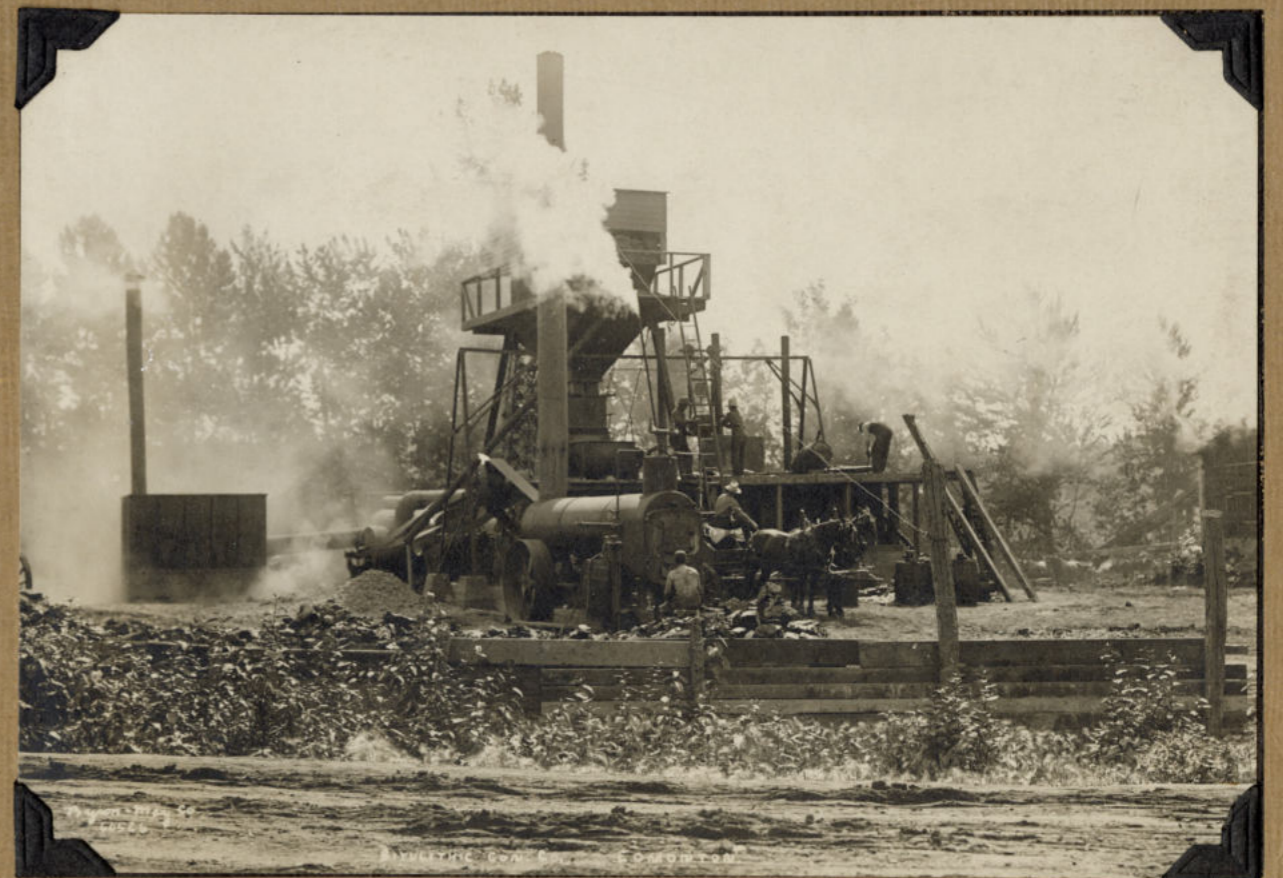
EA-500-243



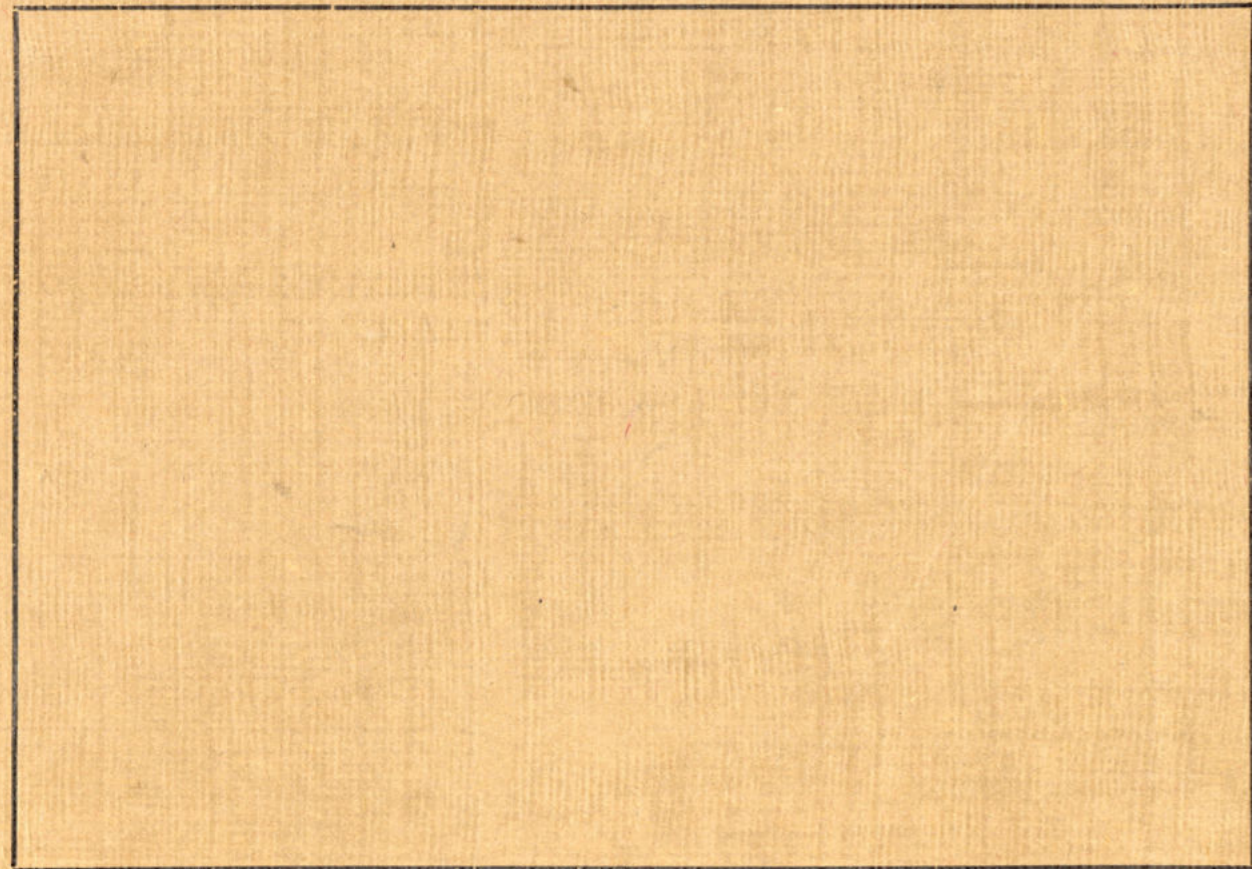
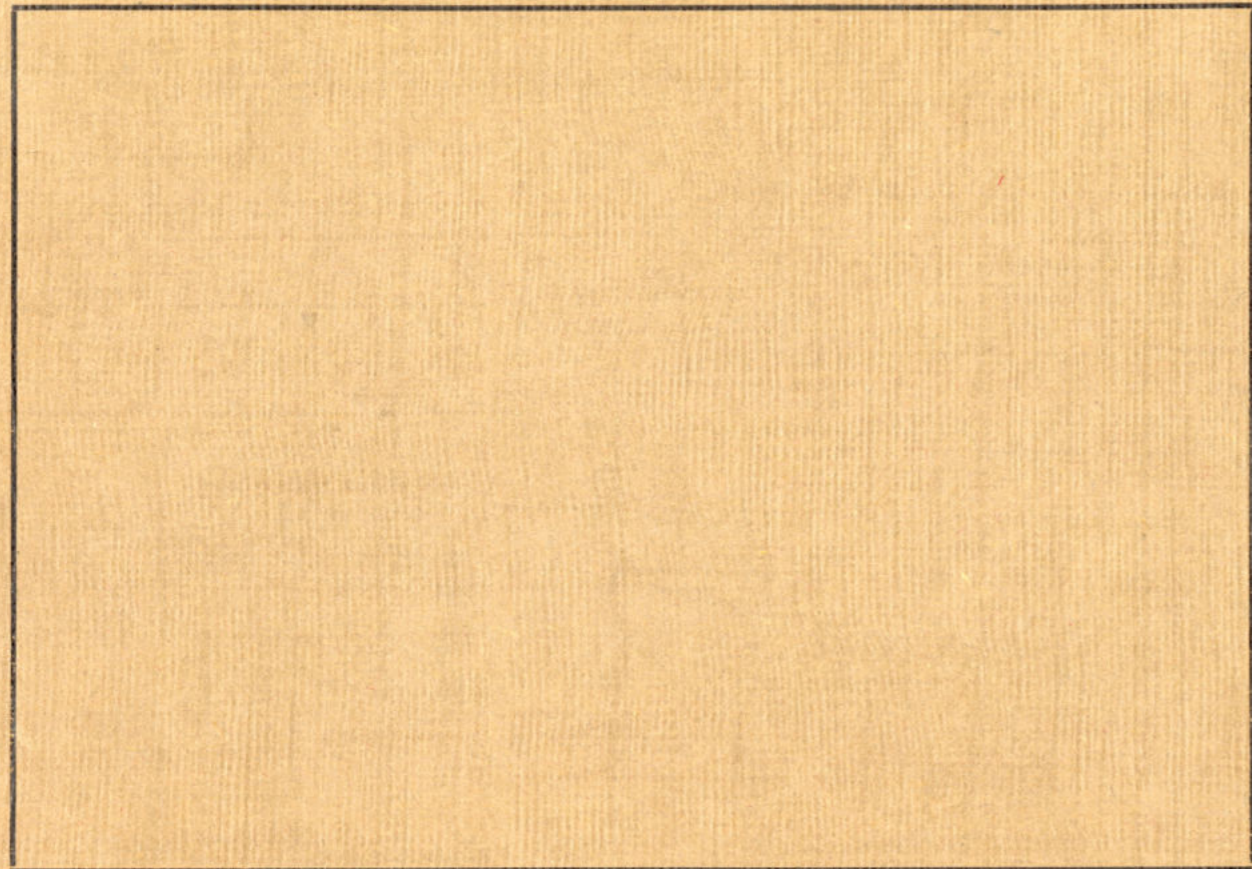
EA-500-147



EA-500-192



EA-500-146







61007



61004

EA-500-221



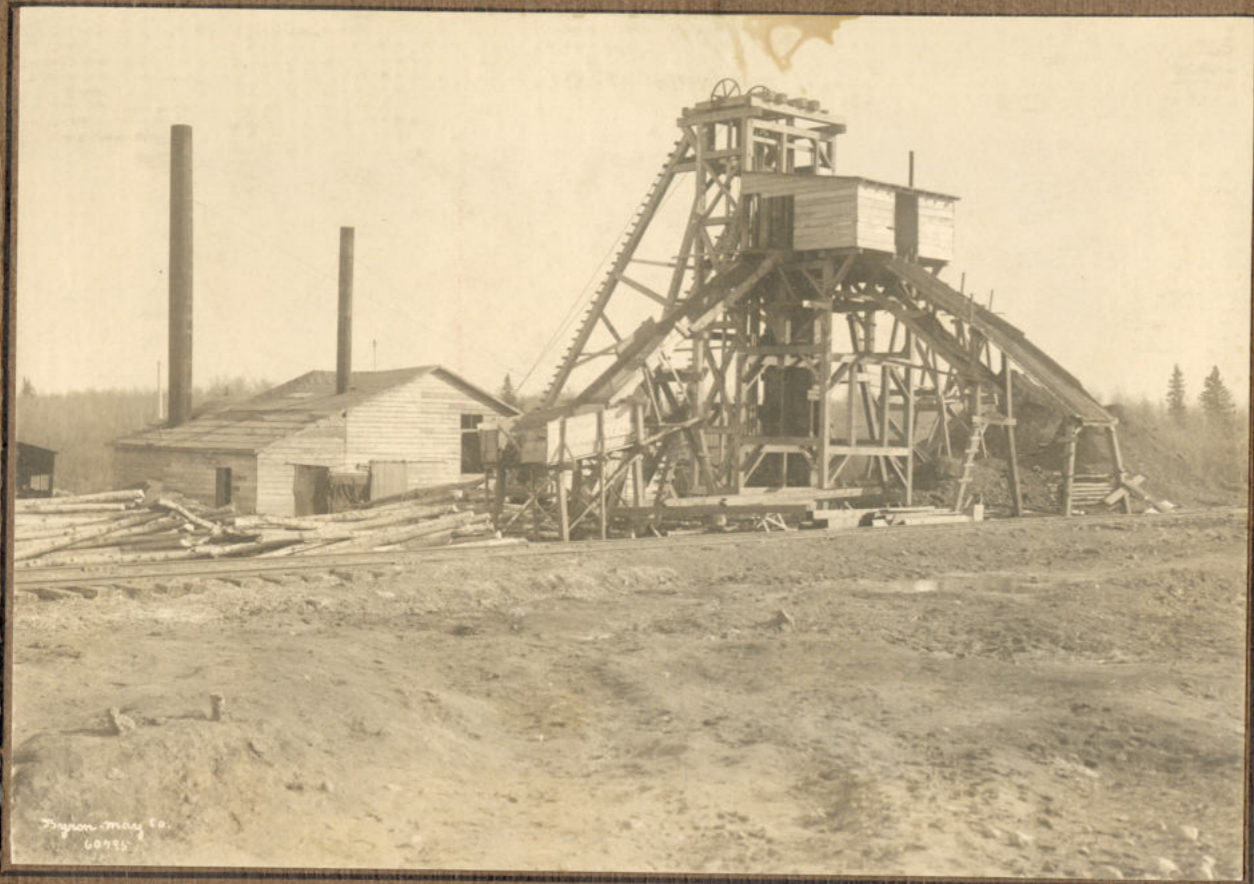
60806

EA-500-215



60983

EA-500-132



60795

EA-500-94



60255

EA-500-89



60857

35 ↑

1

60235



60256

EA-500-91

65m  
303%

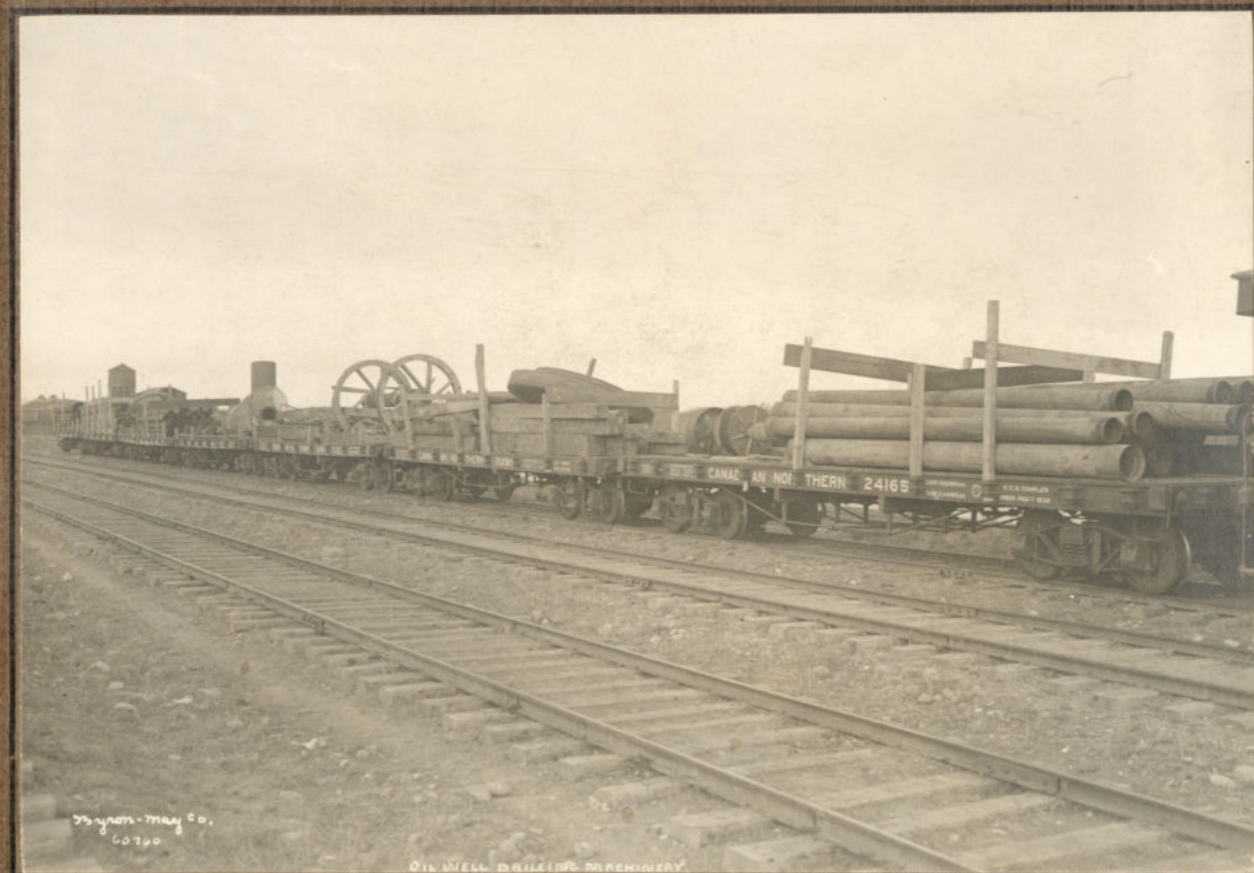


60384



60387

EA-500-357



Sydney-May Co.  
60760

OIL WELL DRILLING MACHINERY

EA-500-358



Sydney-May Co.  
60759

OIL WELL DRILLING MACHINERY

60759

EA-500-359



Wagon-Mag Co.  
60627

FRASER MILLS, BONGORA, B.C.

EA-500-287

60527



Wagon-Mag Co.  
60628

FRASER MILLS, BONGORA, B.C.

EA-500-288

60528



Wagon-Mag Co.  
60673

ALBERTA LUMBER CO.

EA-500-291

60673



Wagon-Mag Co.  
60674

ALBERTA LUMBER CO.'S FACTORY.

EA-500-290

60674



60494

EA-500-197



Anderson's Brickyard - Gallagher Flats.

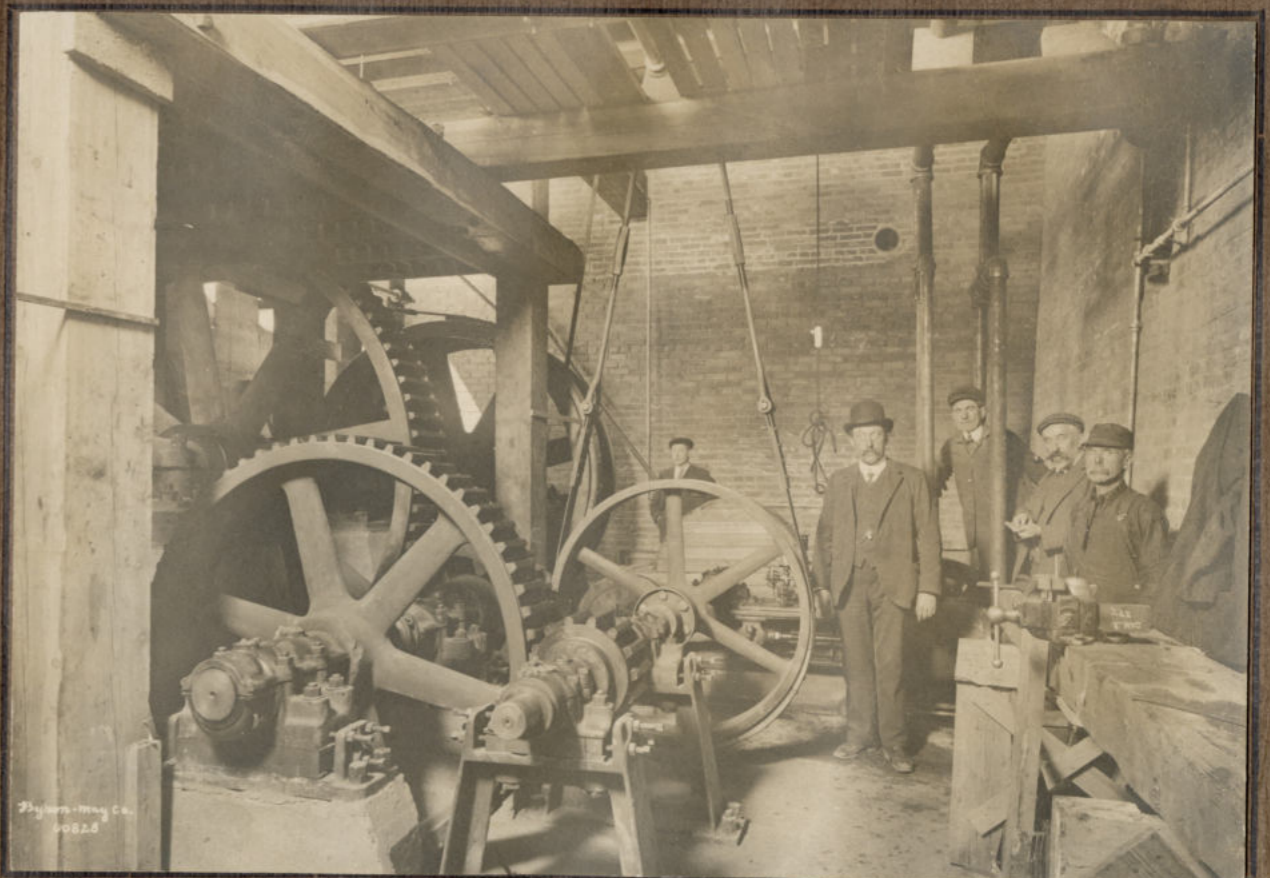
60495

EA-500-193



60828X

EA-500-10



60828

EA-500-11



60864



60866

EA-500-134



60865

EA-500-133



60867

EA-500-135



Wagon - May Co.  
60598

WALTER'S SAW MILL, EDMONTON.

60599

EA-500-189



Wagon - May Co.  
60598

WALTER'S SAW MILL, EDMONTON.

60598

EA-500-205



Wagon - May Co.  
60253

60253

EA-500-200



Wagon - May Co.  
60253

EA-500-89



60737

#7 52%  
↓  
PAGE  
⑪

EA-500-201



60529



60972

EA-500-199



60334

EA-500-137





Stuyvesant-May Co.  
61169

C.N.R. DEPOT, EDMONTON.

EA-500-159



Stuyvesant-May Co.  
61166

ALBERTA COAL MINE, MORINVILLE.

61166

EA-500-93



Stuyvesant-May Co.  
61165

ALBERTA COAL MINE, MORINVILLE.

61165

EA-500-95



Stuyvesant-May Co.  
60856

THE ALBERTA COAL MINE.

60856

EA-500-96



61138

61138

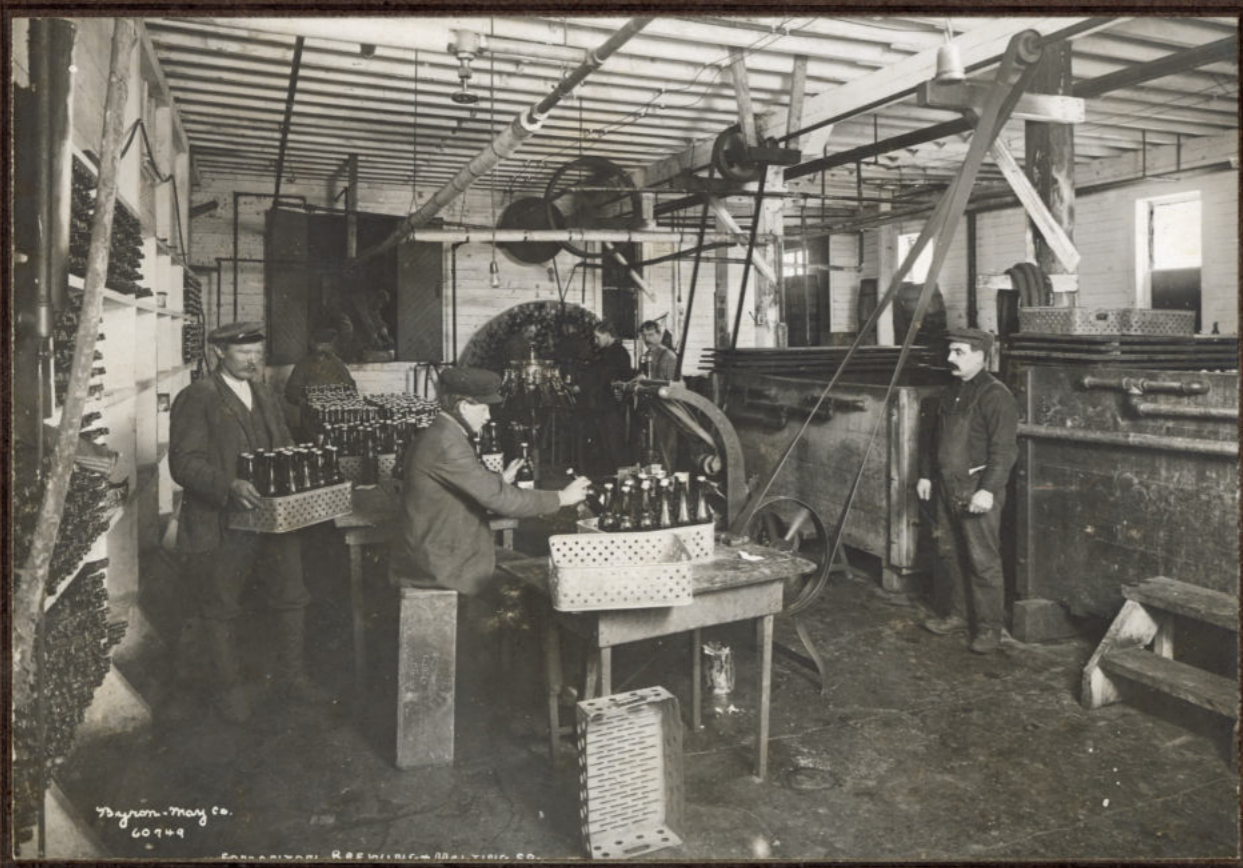
EA-500-215



61133

61133

EA-500-217



60749

60749

EA-500-391



60336

60336

EA-500-219



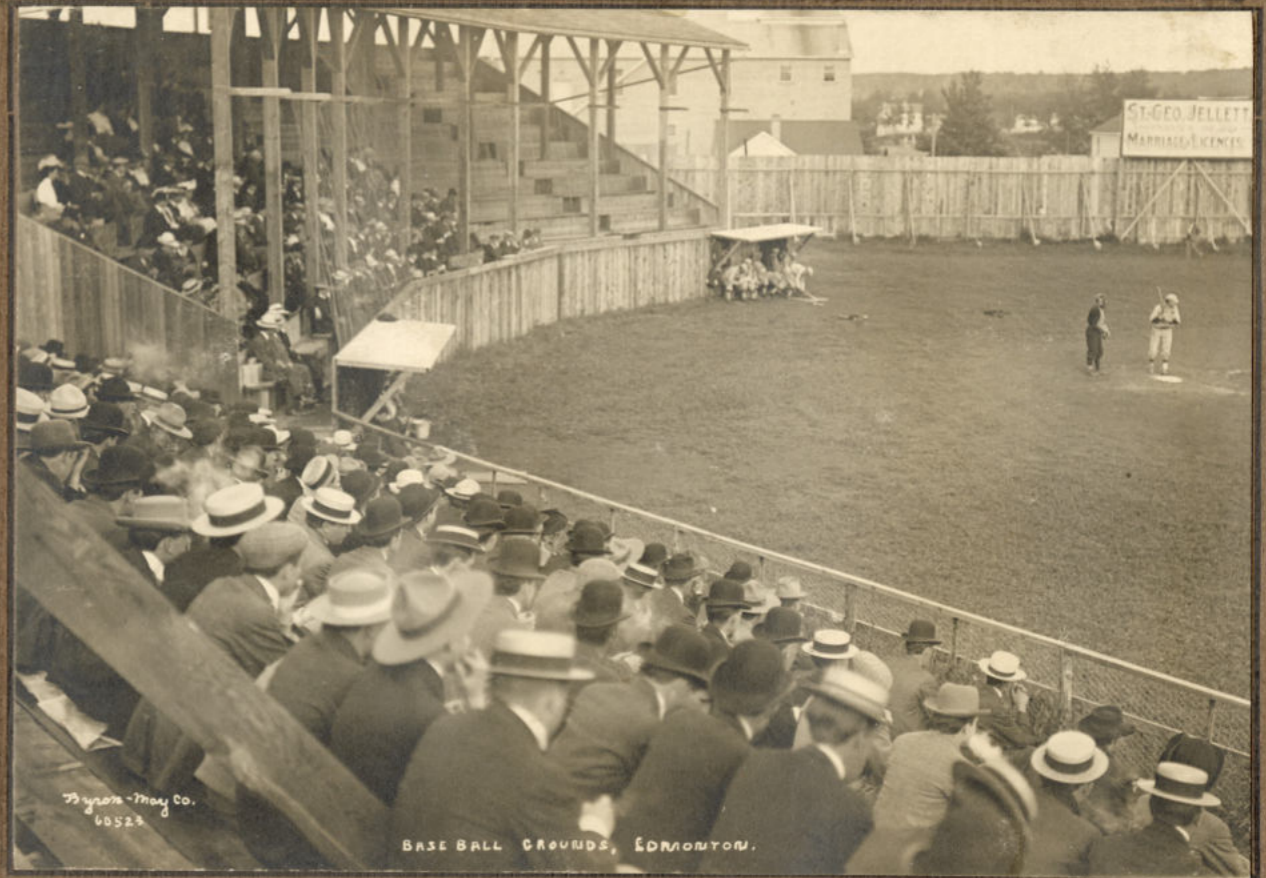
Wagon-May Co.  
60817

GRAND TRUNK PACIFIC R.R. GRAVING

PASADENA PLANT

60817

EA-500-63



Wagon-May Co.  
60523

BASE BALL GROUNDS, EDMONTON.

60523

EA-500-229

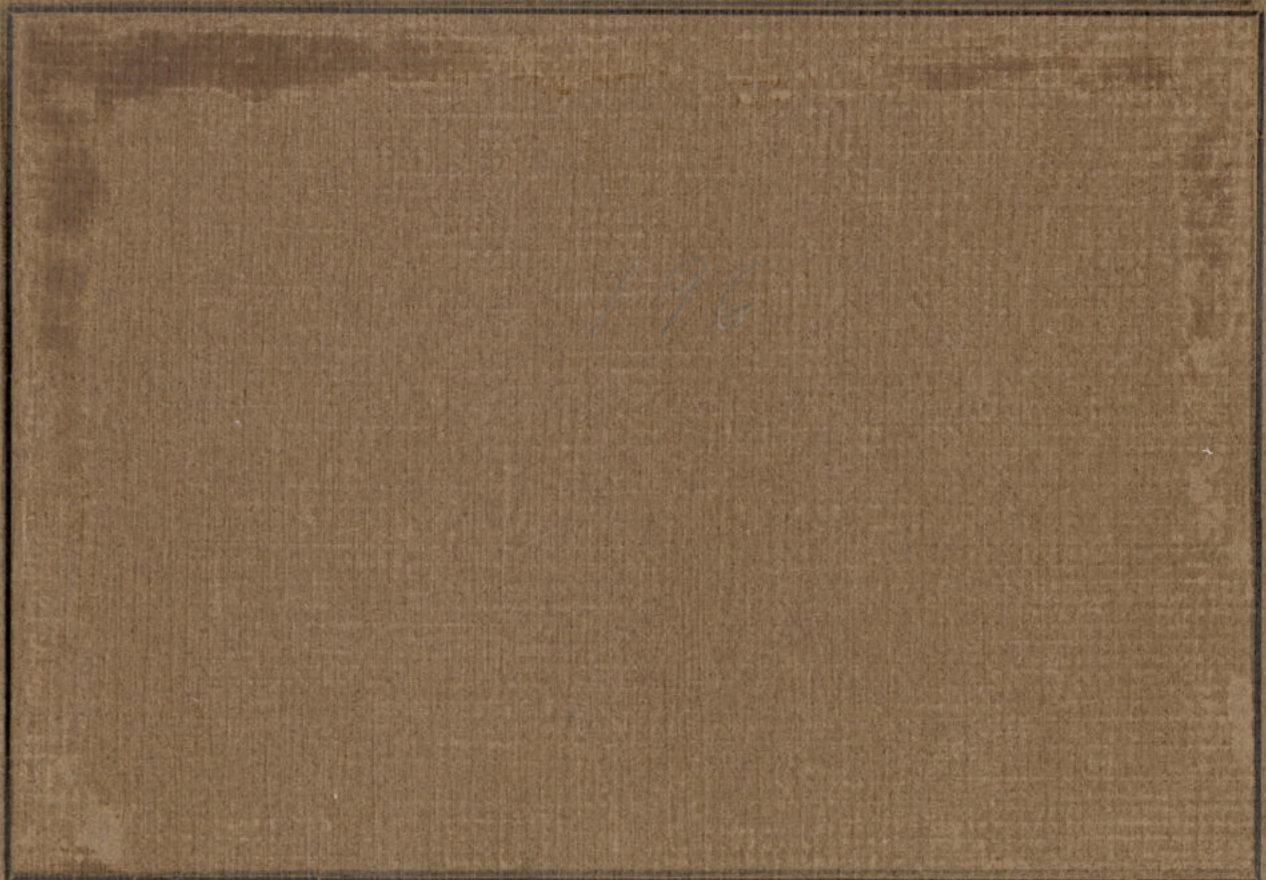


Wagon-May Co.  
60782

THE EDMONTON HOCKEY CLUB

60782

EA-500-214



60833



SEBR BEACH WABAMUN LAKE, ALTA.

61794

EA-500-459



62096



Edmonton East End 61834

EDMONTON EAST END

62034

EA-500-75

(37) ↓ 60:37

86  
W



Pyram-Mary Co.  
60759

60759

82%

EA-500-359



Pyram-Mary Co.  
61396

61396

EA-500-364



Pyram-Mary Co.  
61384

61384

DAD BROS' FARM, SPRUCE GROVE CENTRE, CUMBERLAND DISTRICT, ALTA.

EA-500-366

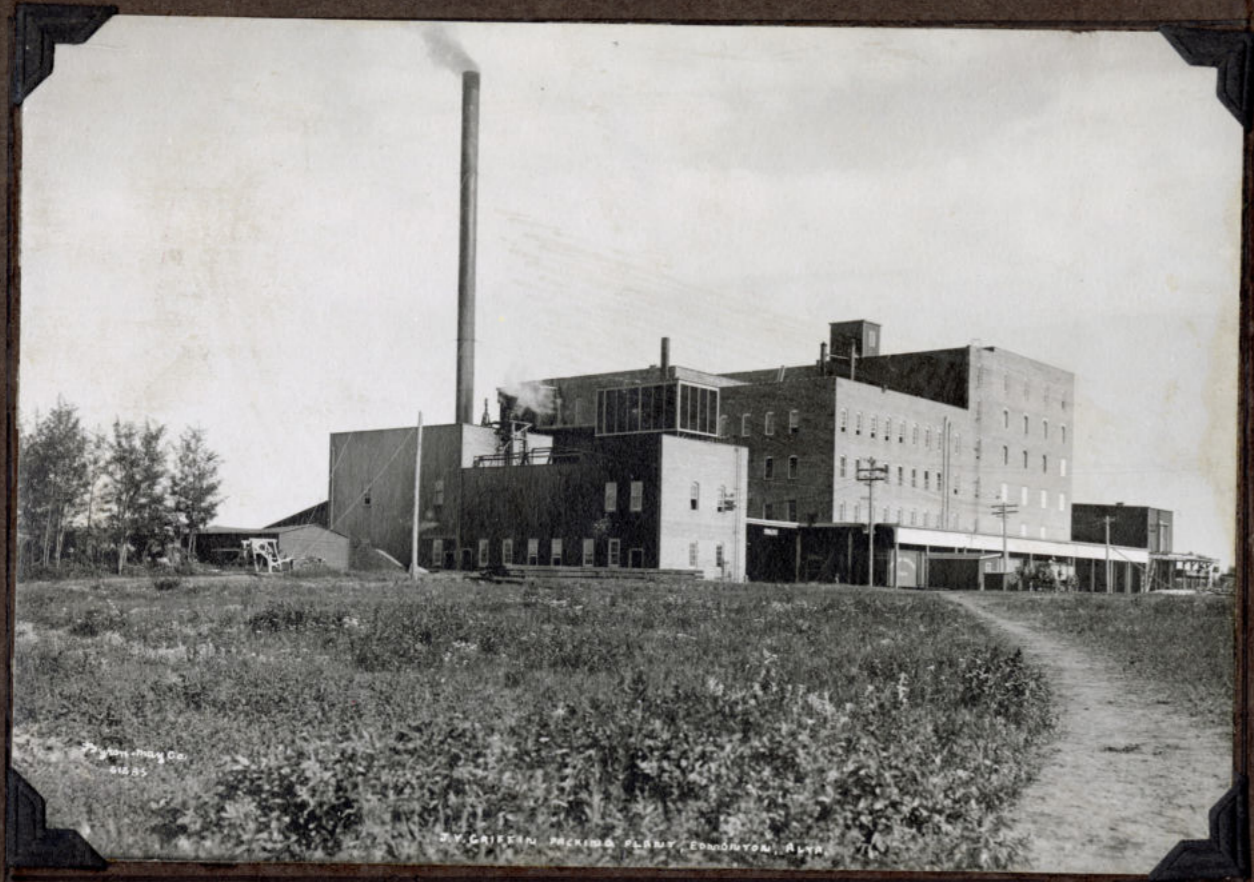


Pyram-Mary Co.  
61290

61290

NEELY, EDMOND, ALTA.

EA-500-265



61170

EA-500-60



60324

EA-500-399



61048

EA-500-307



60394

EA-500-334

---

# MS-1037

## Edmonton Chamber of Commerce fonds

This digitized item is from the City of Edmonton Archives' MS-1037 Edmonton Chamber of Commerce fonds, EA-500 photo album.

Some archival material may be protected by legal restrictions on access. Where possible, restrictions such as FOIP have been noted on the finding aids.

The copyright law of Canada governs the making of reproductions of copyright material. Certain copying may be an infringement of the copyright law. The City of Edmonton Archives is not responsible for infringing copies made by its researchers.

To request material, please contact the Reference Archivist at 780-496-8711 or [cms.archives@edmonton.ca](mailto:cms.archives@edmonton.ca) and provide us with the following information:

- Fonds number
- Accession number (e.g. A97-123) if applicable
- Series or class number
- Sub-series or sub-class number if applicable
- File number
- File name

As an example, you would request MS-123 series 1 sub-series 1.2 file 23 Correspondence

Unless otherwise specified, this finding aid is © 2021 City of Edmonton.