



ENVISION 109

LET'S TALK about how to create a safe, visually appealing streetscape.

LET'S RETHINK sidewalks, landscaping and parking.

LET'S REVITALIZE for all users to enjoy.

We want to hear
your vision for a
future 109 Street.

Kick-off Open House
4:30 – 8:00pm

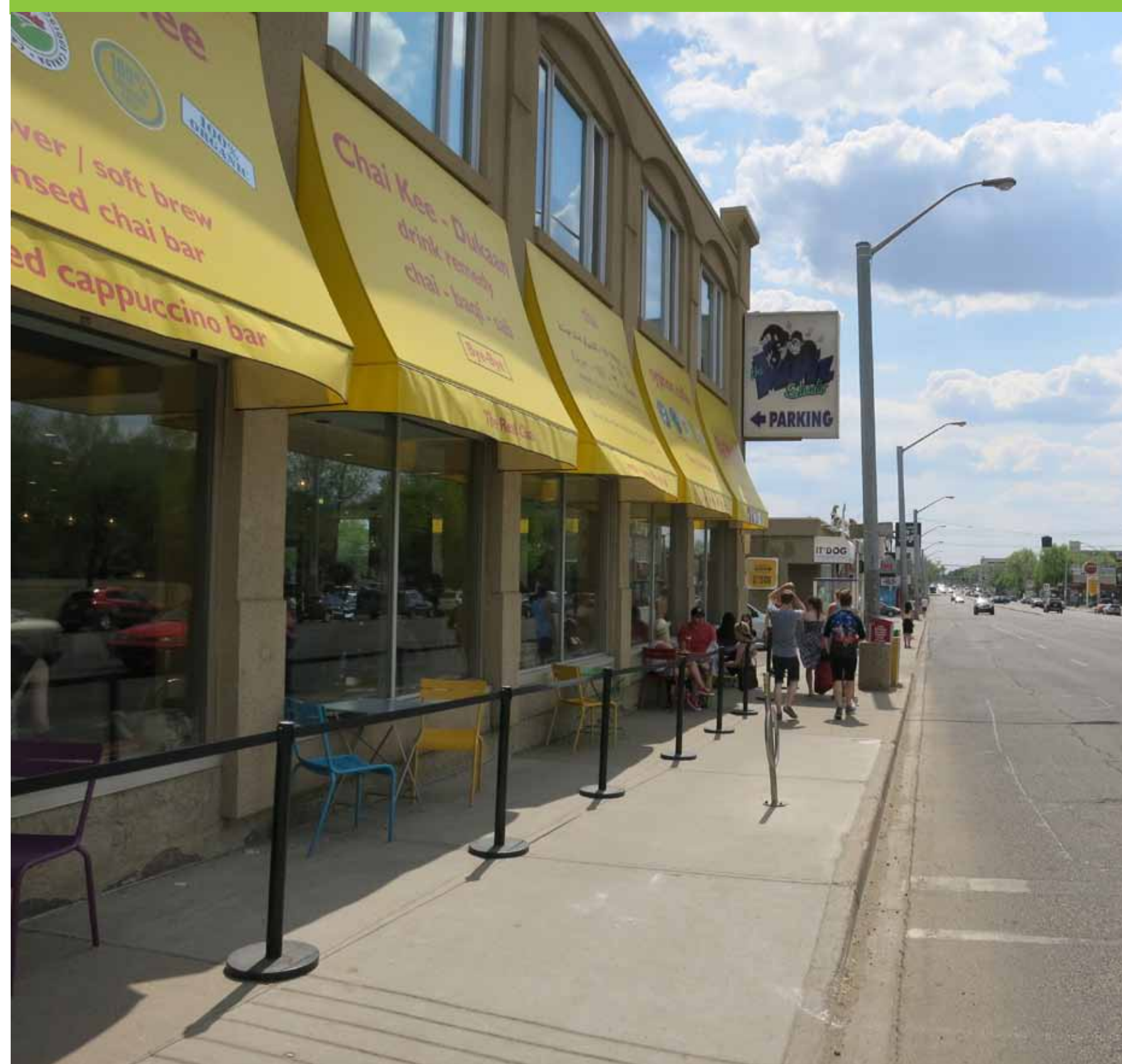
Presentations:
5:00 and 6:30pm

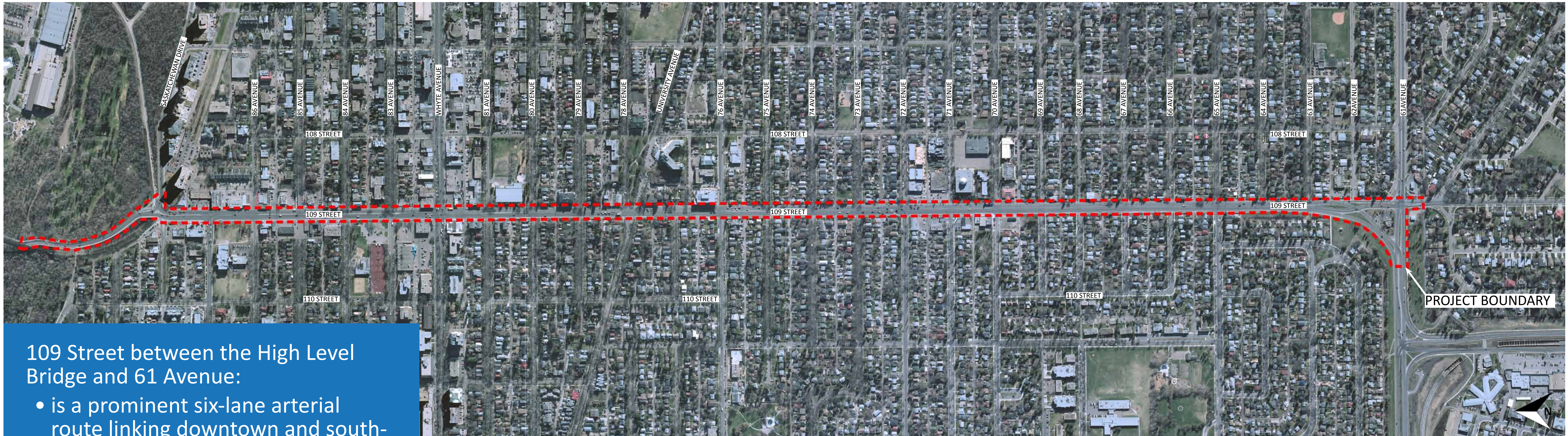
Workshop and
informal discussion
between and after
presentations

Let's Envision a Future for 109 Street...

Tonight you can:

- Learn about the 109 Street Streetscape Concept Design project and process
- Ask questions of the City and design team
- Provide your views and comments to help ensure the streetscape design reflects the community vision





109 Street between the High Level Bridge and 61 Avenue:

- is a prominent six-lane arterial route linking downtown and south-central Edmonton.
- bisects the Garneau neighbourhood and borders five other established communities - Queen Alexandra, McKernan, Parkallen, Allendale, and Pleasantview.
- is primarily a north-south connector for vehicles, pedestrians and cyclists and also acts as an east-west connector between neighbourhoods, schools and commercial establishments.
- has two distinct character areas, with north of Whyte Avenue predominantly commercial and a developing urbanized area, and south of Whyte Avenue mainly residential interspersed with pockets of commercial activity.

PROJECT AREA



SURROUNDING COMMUNITIES

PROJECT OBJECTIVE

To involve the public and stakeholders in the development of short and long-term streetscape concept designs that will improve the look, function and feel of 109 Street between the High Level Bridge and 61 Avenue.

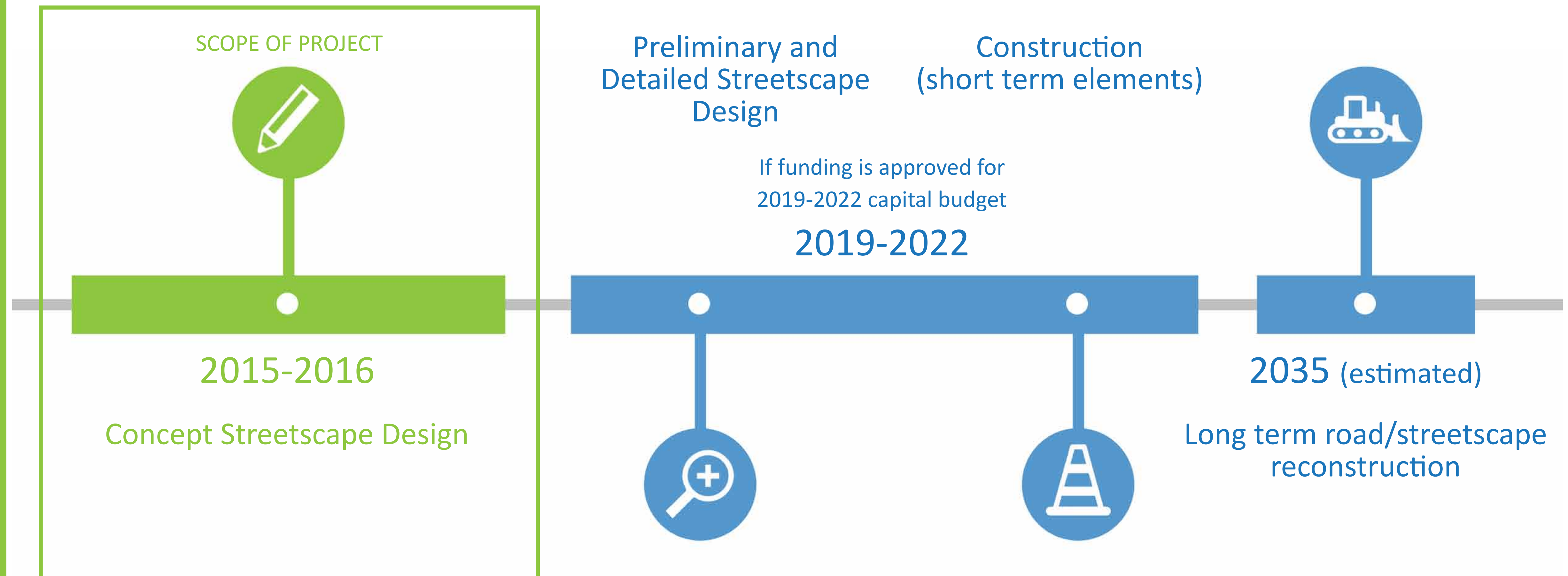
The 109 Street Corridor Area Redevelopment Plan (2013) will be used as the foundation for this project.

The designs will address the needs of drivers, cyclists, pedestrians and transit riders who use the 109 Street area and will consider opportunities to enhance accessibility, safety, furnishings, signage, surface treatments, public art, lighting, public spaces and more.

PROJECT OUTCOMES

Two streetscape concept design options will be developed:

- Short term off-street improvements - improvements to the public realm that do not involve reconstruction of the roadway.
- Long term road/streetscape improvements - reconstruction of roadway that envisions a more pedestrian oriented street.



* Construction funding is not approved at this time

PROJECT TIMELINE

WHAT IS A STREETScape?

- Refers to how the street looks, feels and functions.
- Determines how the street impacts all users including drivers, cyclists, transit riders and pedestrians as well as nearby residents.
- Addresses sidewalk conditions, building facades, landscaping, architecture, lighting, street furniture, signage, connectivity, crosswalks, road design, traffic management, parking, safety, maintenance and more.
- Recognizes streets as places where people engage in various commercial and recreational activities such as shopping, dining, socializing, exercising or working.
- Can ultimately define the character of a community, stimulate economic activity and contribute to the sustainability of the street.

COMMON STREETScape COMPONENTS



SIDEWALKS



SURROUNDING CHARACTER



LIGHTING / BANNERS



PLANTING



CROSSWALKS



STREET TREES



HERITAGE



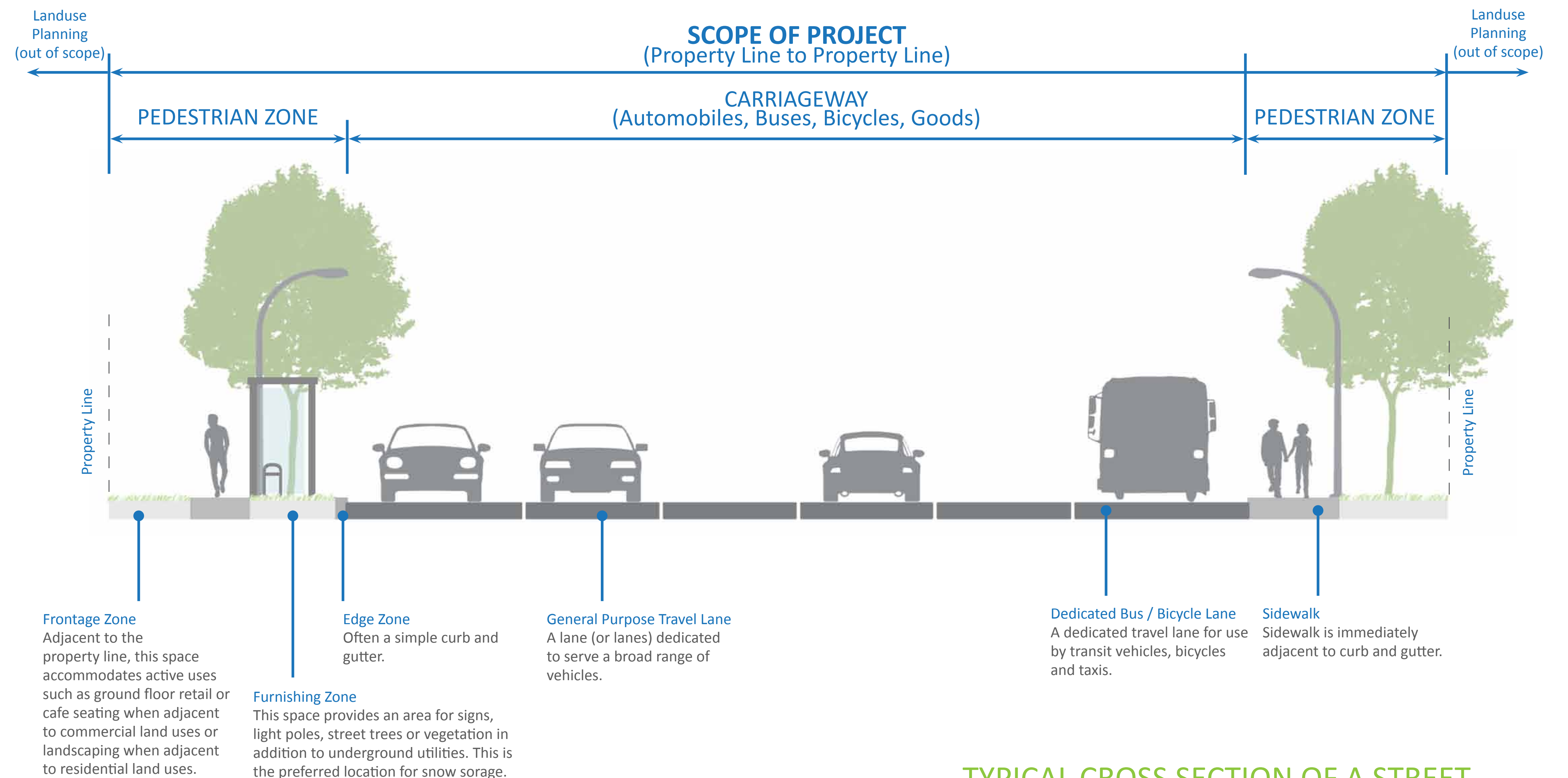
STREET FURNITURE



SIGNAGE



ROADWAY / LANES / PARKING



TYPICAL CROSS SECTION OF A STREET



109 STREET CORRIDOR ARP

In 2013, City Council approved the **109 Street Corridor Area Redevelopment Plan (ARP)**. Created in consultation with community members, the plan sets out a clear direction for the future redevelopment of the area, and specifically about the 109 streetscape. This ARP sets the foundation for the streetscape planning.

PLAN PURPOSE AND OBJECTIVE

“To improve the quality and appearance of development and the streetscape on 109 Street to achieve a better environment for pedestrians and a better balance between all users of this important transportation corridor.”

WHAT IS AN AREA REDEVELOPMENT PLAN (ARP)?

Area Redevelopment Plans are used to guide how an existing built-up area or neighbourhood should develop in the future.



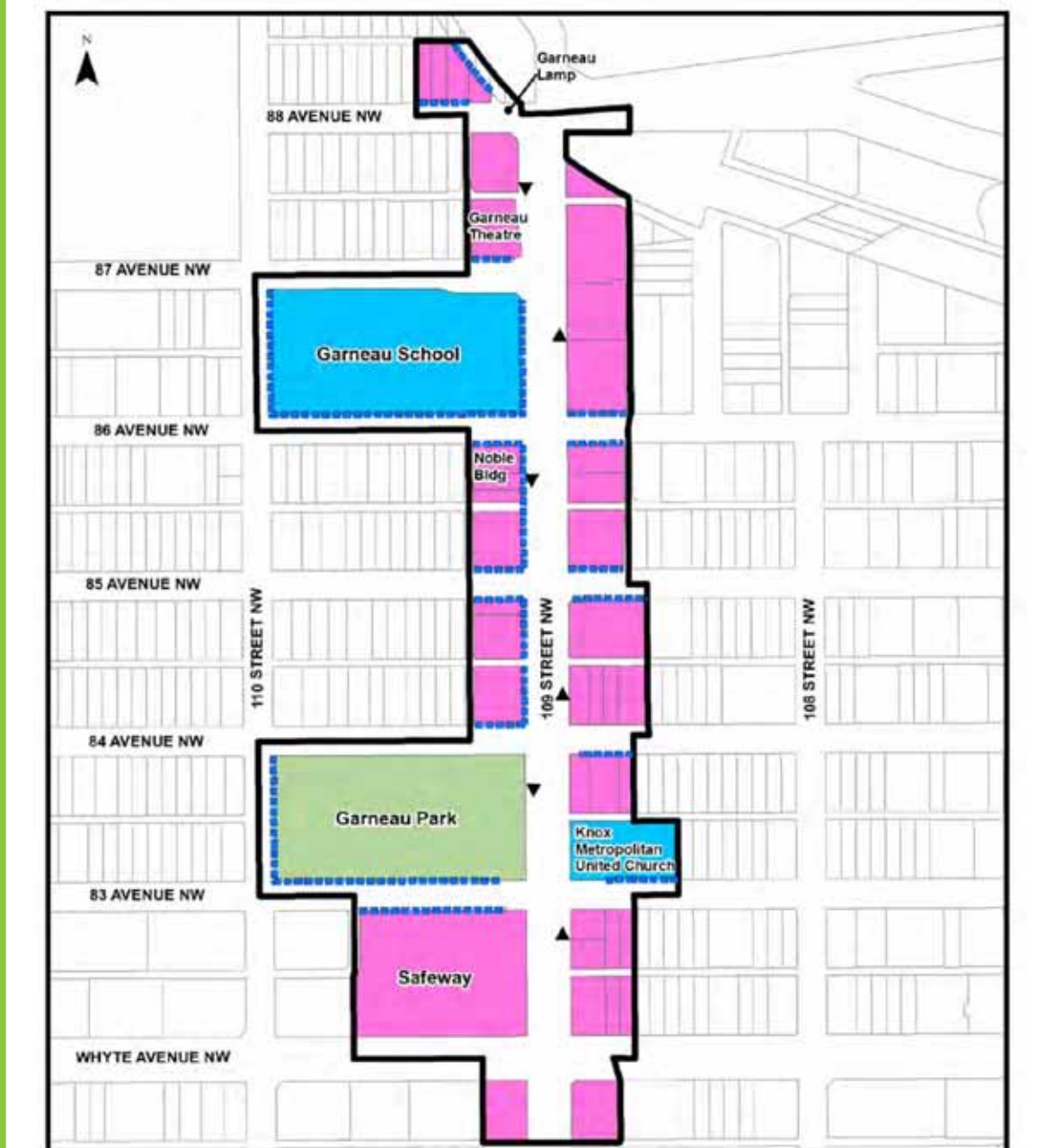
109 Street Corridor Study Process

GUIDING PRINCIPLES OF THE 109 STREET CORRIDOR ARP

- 1 Enhance the public and private realm to provide safe, visually appealing streetscape for all users.
- 2 A safe, attractive, comfortable and welcoming roadway for all users.
- 3 Create a vibrant residential and commercial mixed-use street.
- 4 Encourage appropriate high quality medium-scale development to increase the vitality of the Corridor.
- 5 Encourage future development in the Corridor to demonstrate a high quality of landscaping, building materials and design quality to minimize adverse impacts.
- 6 Encourage environmentally sustainable development practices.
- 7 Establish a high standard of design for an important high profile entranceway.

ARP DEVELOPMENT CONCEPT

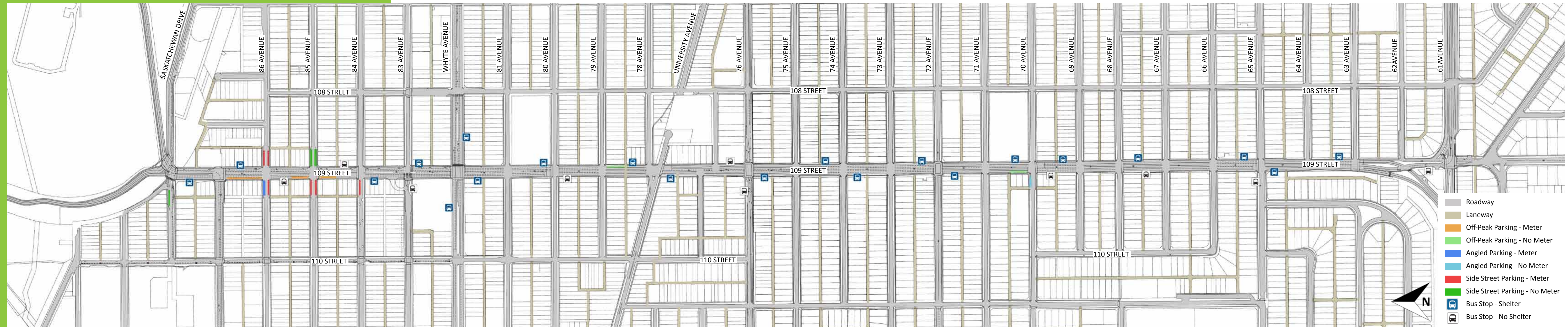
The development concept consists of two distinct districts, each with an emphasis on the principal mixed use / commercial and medium-scale residential uses that define those portions of the 109 Street Corridor.



Mixed Use Commercial Zone - North of Whyte Avenue



Medium Scale Residential Zone - South of Whyte Avenue



EXISTING ROAD & SIDEWALK CONDITIONS

Based on current condition ratings of the road and sidewalk surfaces, previous renewal history and life cycle analysis, major reconstruction of 109 Street (between 61 Avenue and Saskatchewan Drive) is not expected to be required until 2035.

Mill and overlay of the road is scheduled for the next budget cycle (2019-2022), subject to budget approval in 2018.

ROAD CLASSIFICATION

LOCAL

Provide direct access to adjacent lands and serve neighbourhood travel.

COLLECTOR

Provide neighbourhood travel between local and arterial roads and direct access to adjacent lands. Buses generally operate on collector roads within neighbourhoods.

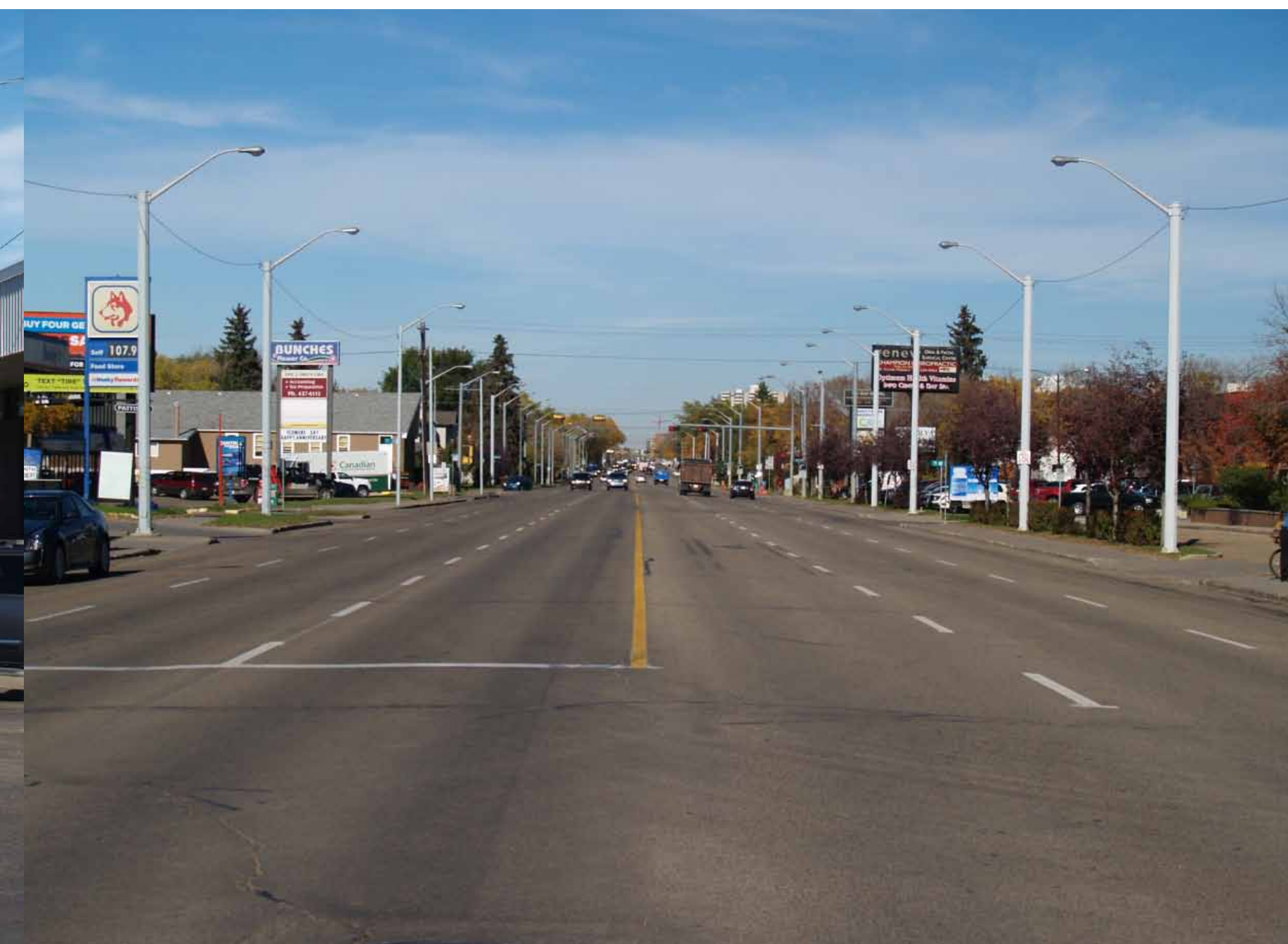
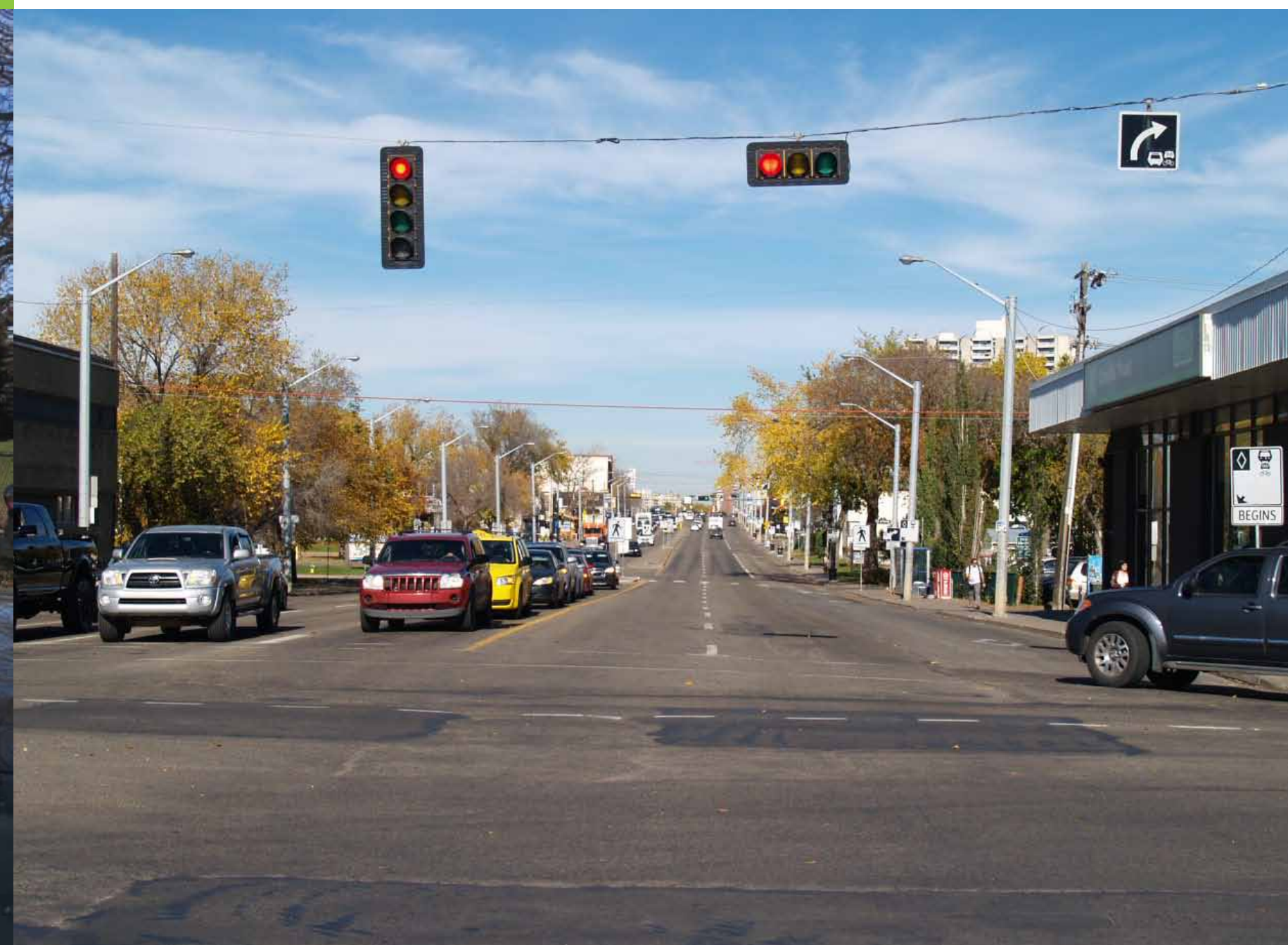
109 Street is an...

ARTERIAL

Intended to carry large volumes of traffic between areas ("through" traffic) with fewer access opportunities to adjacent developments and are defined by the Transportation System Bylaw.

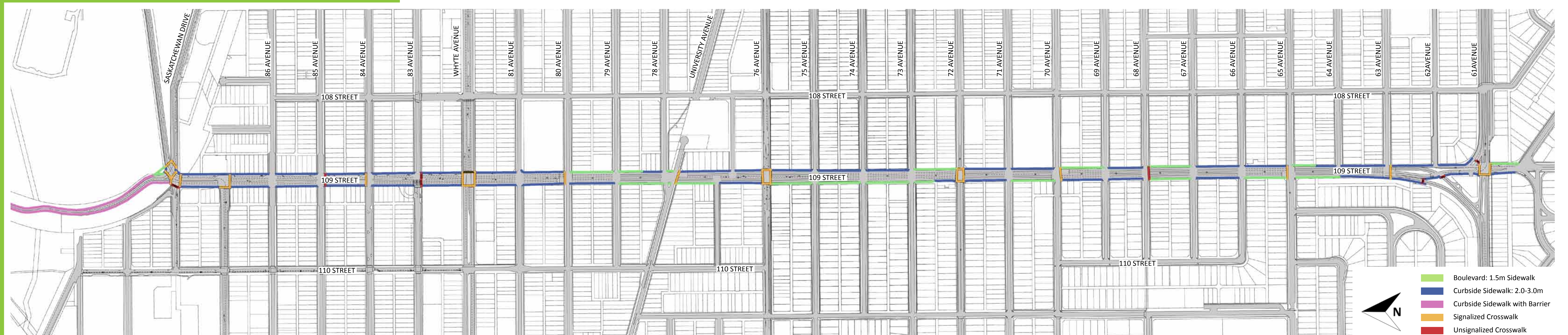
TRANSIT CONSIDERATIONS ALONG 109 STREET

- 109 Street is identified as a Transit Avenue – it is served by one or more bus routes that provide all day service and connect major trip generators, LRT stations and transit centres.
- North-south bus routes connecting to University and Downtown.
- East-west bus routes intersecting with 109 St.
- Future LRT: An east-west LRT route is proposed as a corridor for future study that would intersect 109 Street and connect with the existing line at the University.
- 109 is an Arterial Road and therefore is intended to carry large volumes of traffic.



The Envision 109 Streetscape Concept Design will consider the following with respect to Pedestrian Infrastructure:

- Safety
- Accessibility
- Crosswalks
- Signalization
- Public space
- Street furnishings
- Aesthetics



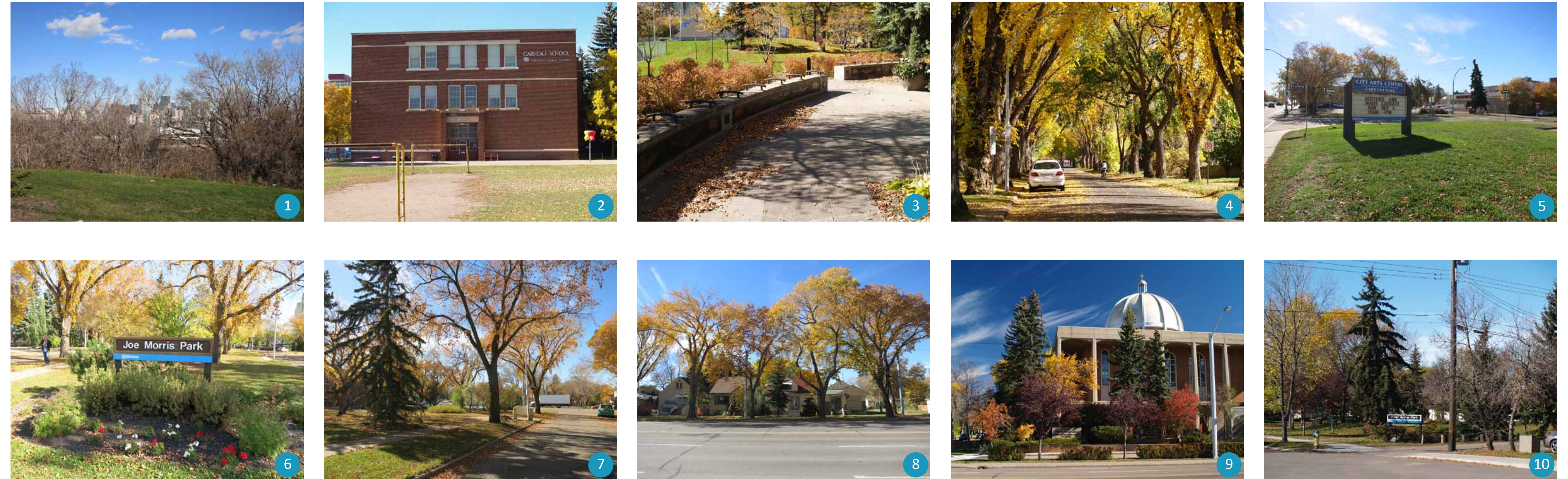
The Envision 109 Streetscape Concept Design will consider the following with respect to Bicycle Infrastructure:

- Safety
- Accessibility
- Crossings
- Signalization
- Dedicated bike lanes, cycle tracks, etc.
- 106th Street bike lane
- 83rd Avenue cycle track



The Envision 109 Streetscape Concept Design will consider the following with respect to Open Space:

- Enhance connectivity of open space within the surrounding communities
- Sustainability
- Street trees and landscaping along the corridor
- Public art
- New opportunities for open space and social interaction along the corridor



YOU are a valuable part of the Streetscape Concept Design. We want to hear your views and receive your comments to ensure we design a 109 Street reflective of the values and vision of Edmontonians.

HOW TO LEAVE US YOUR THOUGHTS

1. Complete a Comment Form (tonight or online at edmonton.ca/envision109)
2. Leave comments on 'sticky notes' on the roll map
3. Participate in our workshop session following each presentation

Open House #1

January 27, 2016

Kick Off Open House

Tell us what's working, what's not and how you envision 109 Street in the future.

Open House #2

Spring, 2016

Design Options Open House

Review design options and let us know what you think. Did we get it right? What could be improved?

Open House #3

Summer/Fall, 2016

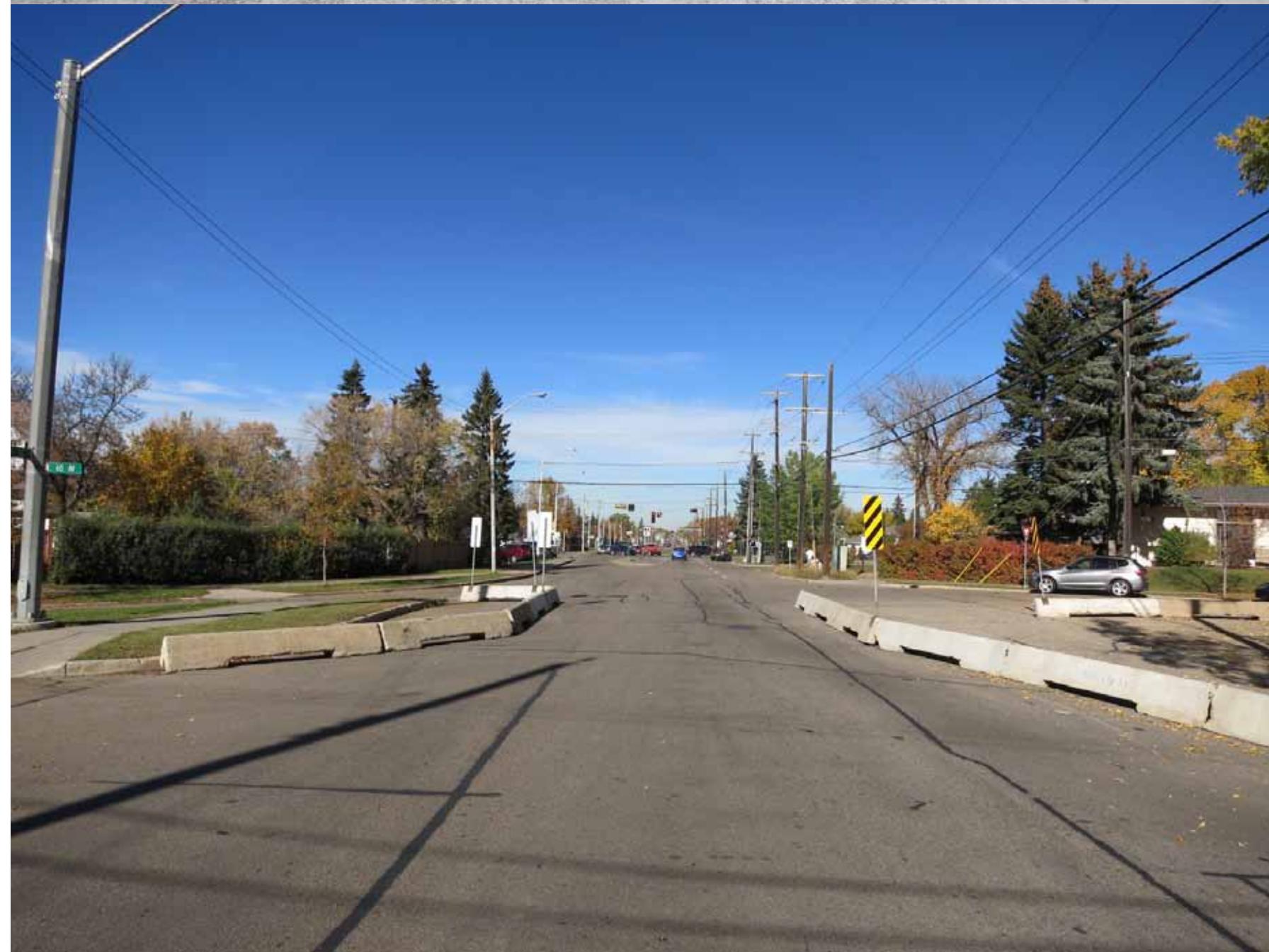
Recommended Concept Design Open House

Provide feedback on the recommended streetscape design concept.

HOW YOUR INPUT IS USED

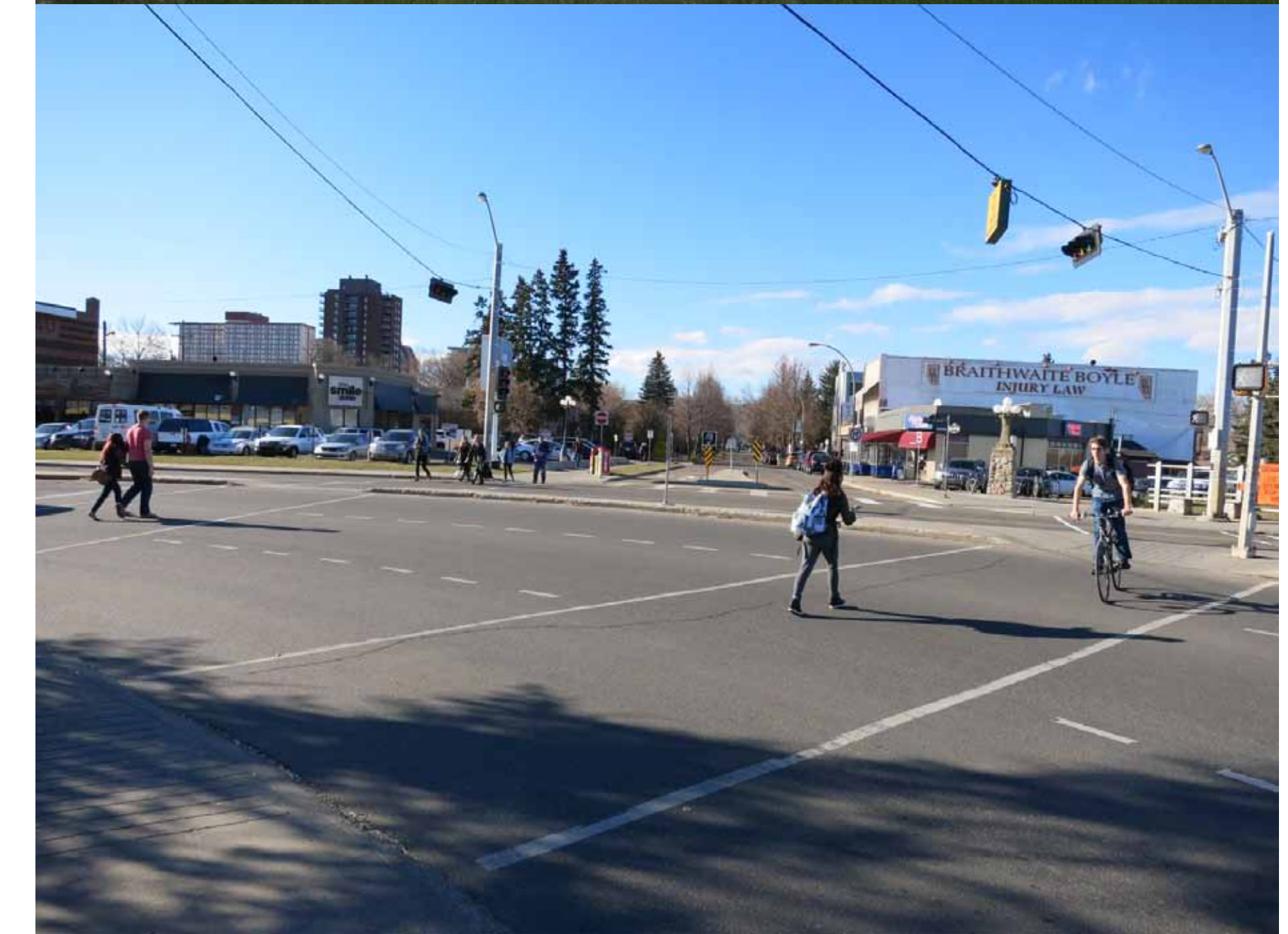
Your input is used together with other considerations to determine the final recommended streetscape concept design.





This project will build on the vision and principles established for the streetscape in the 109 Street Corridor Area Redevelopment Plan (2013). It must also consider other constraints, policies and guidelines, including but not limited to:

- 109 Street is identified as a ‘Transit Avenue’ (bus corridor) and a 24hr truck route
- Engage 106/76 – collector renewal planning for 106 Street and 76 Avenue
- 83 Avenue bike lanes - road redesign
- Neighbourhood renewal
- Pleasantview traffic calming
- Snow removal policies
- Current 109 street conditions
- Envision 109 funding and implementation timing
- Future LRT extensions
- Edmonton Complete Street Guidelines
- Edmonton Main Street Guidelines (under development)
- Edmonton Winter City’s Guidelines





Share your vision for 109 Street!

Please leave us your thoughts on our Comment Form available at the welcome desk tonight or online until February 10, 2016.

Website: edmonton.ca/envision109

Post photos of your favourite street as we envision 109 Street in the future!



Twitter: @cityofedmonton #envision109



Instagram: @#envision109

Thank You!



Please show us areas of
concern and opportunity here!



ENVISION 109

Tell us your visions for a
future 109 Street here!





Brainstorm 109 Street ideas with
the project team here!

