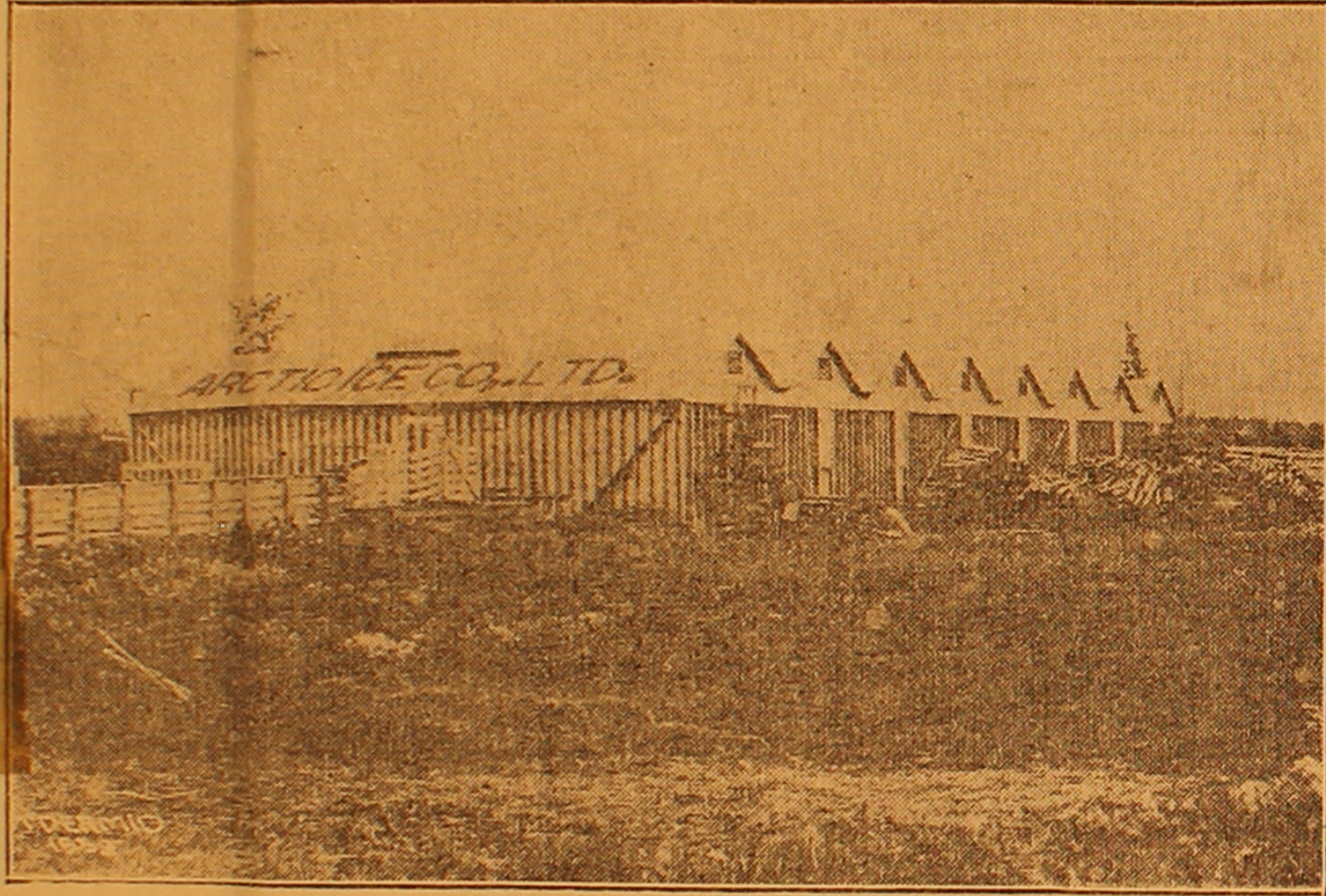


# ARCTIC ICE COMPANY, LIMITED

Company Which Gives Edmonton Its Purest Ice Supply, Brought  
 From Lake Wabamun



STORAGE WAREHOUSES AT LAKE WABAMUN.



MAIN SUPPLY DEPOT, EDMONTON

H  
H  
H

Until this year the question of an ample supply of ice for Edmonton presented many problems and difficulties, and it remained for the Arctic Ice Company, Limited, to step into the field and solve the problem by not only securing a sufficient supply to meet the needs of the city, but to bring forward the best quality of ice that could be offered the public.

The Arctic Company, Limited, recently acquired the Edmonton company's warehouses and plant on the Saskatchewan river, and immediately set about to secure a sufficient supply of ice to meet the rapidly increasing demands of Edmonton and vicinity. For years the Edmonton Ice company has been gathering ice from the river.

When the Edmonton Ice Company, Limited, came into existence it immediately sought the best place in Alberta to gather its ice harvest—Lake Wabamun.

This beautiful clear water lake nestles like an emerald in the rolling country some forty miles from Edmonton, and has sufficient area to supply a nation with ice. The pure snow waters of winter flow into the lake over pebbly reaches from the highlands, and produce a body of water unexcelled for clearness and purity.

During the winter large forces of men were put to work with the result that this year more than eight thousand tons of crystal ice without a flaw

or blemish have been housed at the lake to meet the summer trade.

The big ice house on the banks of the Saskatchewan holds a store of seven thousand tons.

The company's equipment and storage facilities consist of eight ice houses at Lake Wabamun, three ice houses, barn and office and blacksmith shop on Curry street, Edmonton.

The Saskatchewan river ice is as pure as nature can make it. Coming as it does from the snow-fed streams of the surrounding country, filtered through the immense gravel beds along the river, and fed from thousands of pure springs, the water is as limpid and as translucent as a diamond, its rapid flow causing a natural subsid-

ence of all vegetable and other matter to the gravel bed below, leaving the surface absolutely free from impurities.

The company cuts its supply some three miles above the city, where possibility of pollution is totally negligible. It is then stored safely away for summer, and supplied from the big depot on the flats.

To take care of the additional demands that have sprung up this year, the Arctic Ice Company, Limited, has built a large storage house on Twenty-first street for the lake ice, and will have large stores there which may be drawn upon not only in Edmonton, but for the surrounding country reached by railroad.

The plant of the company represents an investment of approximately \$100,000, and additional facilities have been added with a view to being able to keep the supply up to the demand. The delivery force has been augmented until there will be available for this purpose about thirty-five horses. This is practically double the number of teams used a year ago, and shows the company's alertness to give the public quick and sufficient service.

The management of the Arctic Ice Company, Limited, is in the hands of Mr. J. H. Johnson. The other officers are: T. W. Lyons, president; William Harvey, vice-president; J. J. Blackett, secretary-treasurer. Directors: W. H. Sappard, James Powell, J. B. Little.

All these gentlemen are business men of affairs in Edmonton, and through their connection with many of its industries have been powers in its upbuilding. They are men who have recognized and met the demands of the public in many business departments and the Arctic Ice Company, Limited, is another illustration of how they meet an emergency when presented. In both civic and business capacities they have done a great deal for the city, and their selection for the position of directors of the Arctic Ice Company is a recognition of their ability to meet the demands of the public for pure ice.

ARE CO