

# **BOYLE STREET AND MCCAULEY NEIGHBOURHOOD RENEWAL**

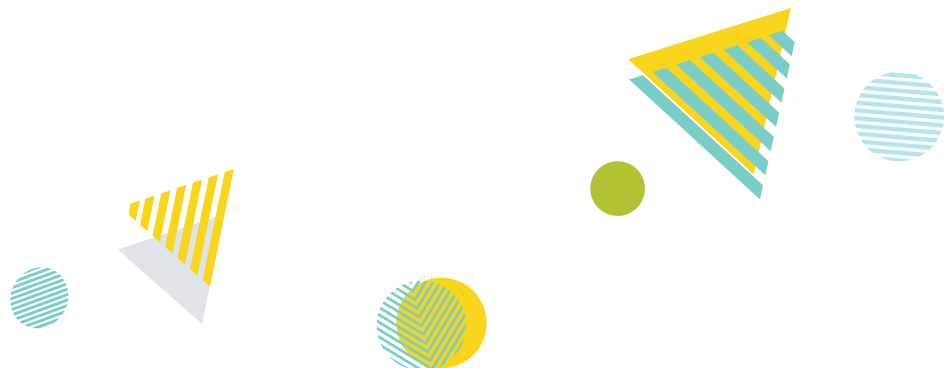
## **Driving and Intersections**



### **What We Heard**

We heard some streets are very narrow and difficult for two-way traffic to maneuver and some intersections are causing driver confusion. Our Project Team has also observed that there are some one-way streets only a block apart going in the same direction which may inhibit traffic flow.

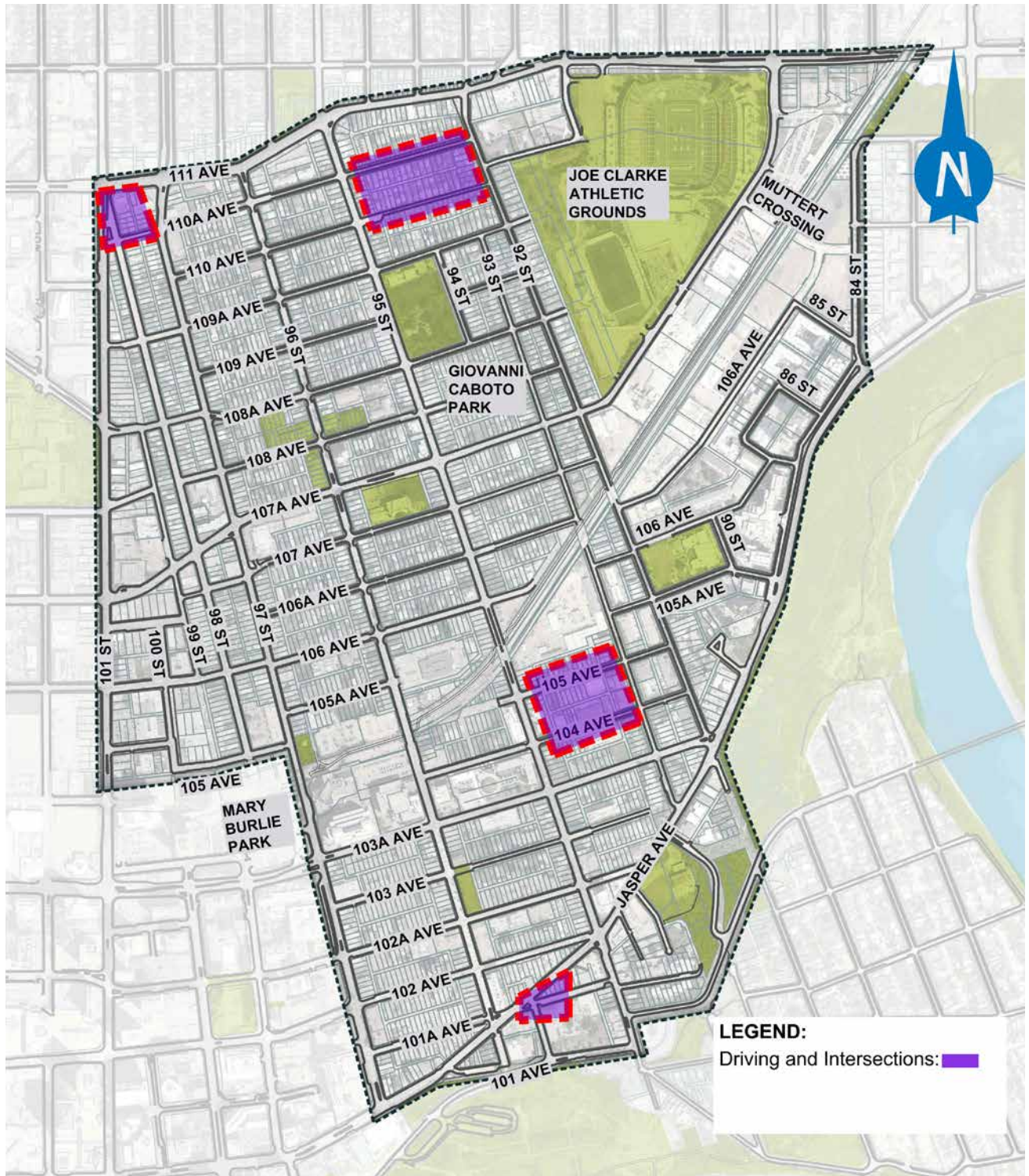
Please review the proposed improvements for some of the streets and intersections in Boyle Street and McCauley and tell us what we should consider in our plans.



TOPIC	PROPOSED CHANGE / DESIGN
<p><b>110 and 110A Avenue – 95 to 92 Street</b></p>	<ul style="list-style-type: none"> <li>+ 110A Avenue                             <ul style="list-style-type: none"> <li>– Change to one-way eastbound</li> </ul> </li> <li>+ 110 Avenue                             <ul style="list-style-type: none"> <li>– Change to one-way westbound</li> </ul> </li> </ul>
<p><b>101 Street / 110A Avenue / 98 Street Intersection</b></p>	<ul style="list-style-type: none"> <li>+ Intersection partial closure (3 options):                             <ol style="list-style-type: none"> <li>a. Close the north access at 98 Street/ 111 Avenue and the access to 98 Street from 101 Street</li> <li>b. Close the north access at 98 Street/ 111 Avenue. Leave the access to 98 Street from 101 Street open</li> <li>c. Close the access at 98 Street/111 Avenue. Keep a parking area and add a turn around. Leave the access from 98 Street at 101 Street open</li> </ol> </li> </ul>
<p><b>101A Avenue / 95A Street – Intersection</b></p>	<ul style="list-style-type: none"> <li>+ Narrowed access to 101A Avenue off of 95A Street</li> </ul>
<p><b>104 and 105 Avenue between 95 and 93 Street</b></p>	<ul style="list-style-type: none"> <li>+ Traffic direction change                             <ul style="list-style-type: none"> <li>– Change 104 Avenue to one-way eastbound</li> <li>– Keep 105 Avenue one-way westbound from 93 Street to the alley and two-way from the alley to 95 Street intersection</li> </ul> </li> </ul>



## Driving and intersections with proposed changes



# 110 and 110A Avenue (95 to 92 Street)

110A Avenue between 95 and 92 Street is very narrow and difficult for two-way traffic to maneuver. We heard that when two cars meet on this stretch one will often have to reverse to the nearest intersection to make way.

## AREA MAP



To help reduce traffic concerns along 110A Avenue, the proposed design includes:

- + 110A Avenue
  - Change to one-way eastbound
- + 110 Avenue
  - Change to one-way westbound



**Input Opportunity:**

What should we consider when planning for these proposed traffic direction changes?

# 101 Street / 110A Avenue / 98 Street – Intersection

We heard that the intersection of 101 Street / 110A Avenue / 98 Street can cause driver confusion.

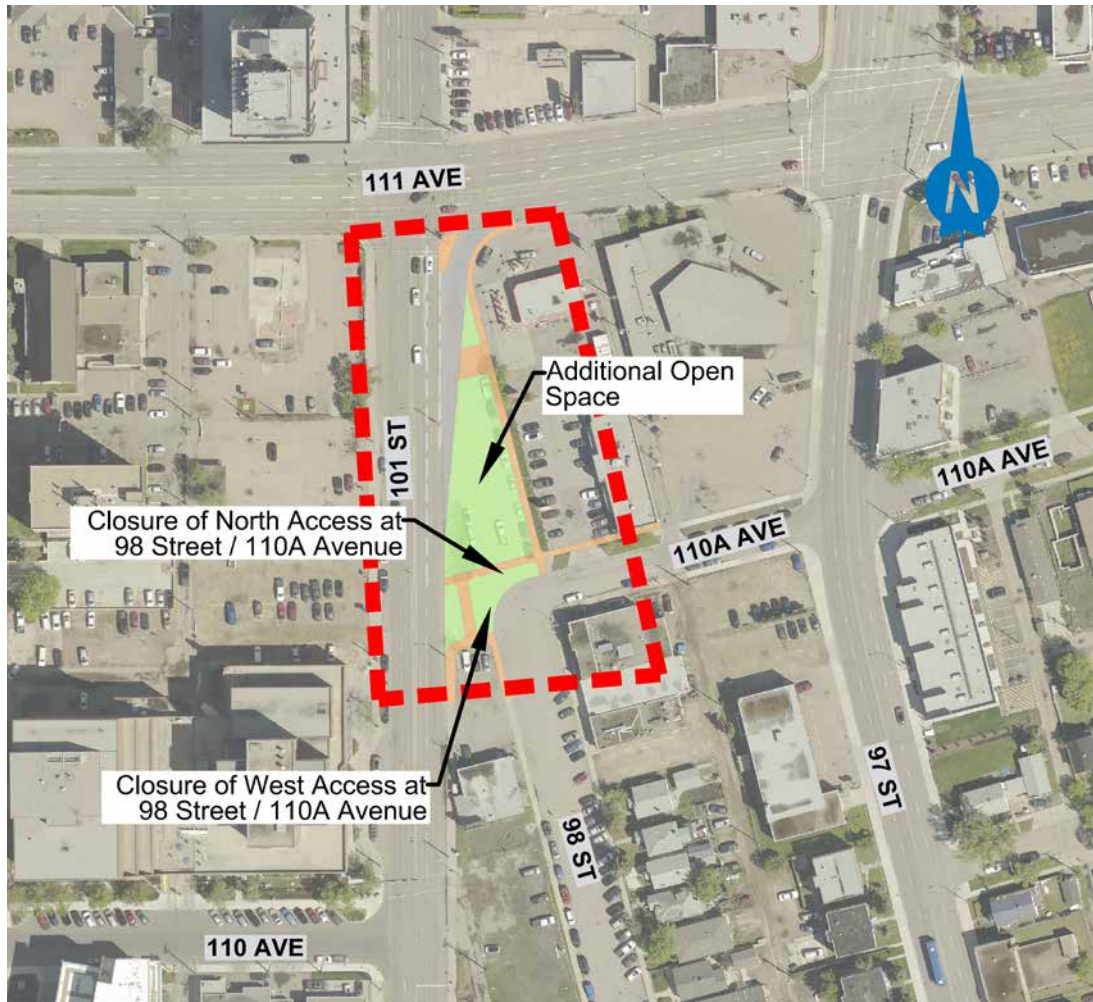
## AREA MAP



To simplify this intersection, the proposed design considers three different options that would partially close this intersection and provide space to add landscaping and beautify the area.

**Option 1:**

- + Close the north access on 98 Street/111 Avenue
- + Close the access to 98 Street from 101 Street



**Option 2:**

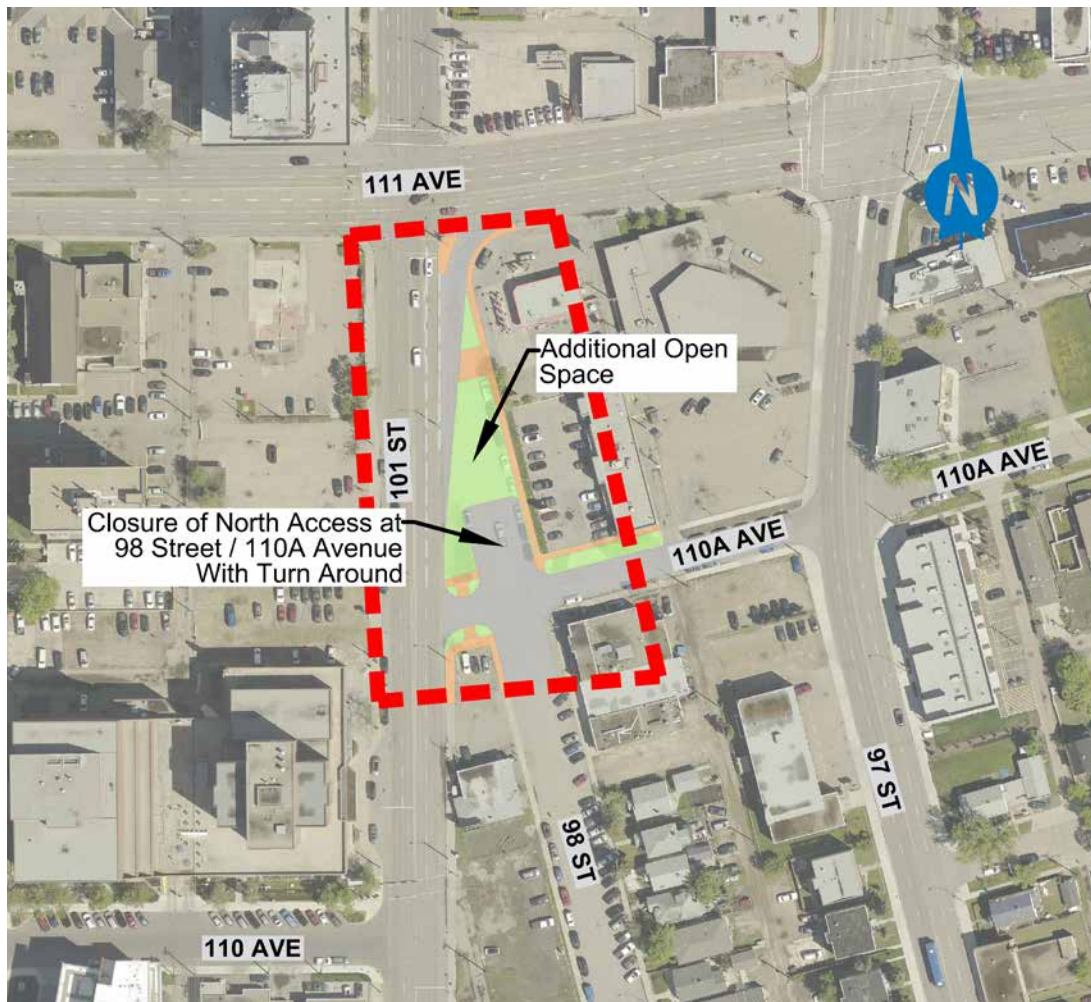
- + Close the north access to 98 Street/111 Avenue
- + Leave the access to 98 Street from 101 Street open





**Option 3:**

- + Close the north access on 98 Street/111 Avenue
- + Keep a parking area and add a turn around
- + Leave the access from 98 Street from 101 Street open



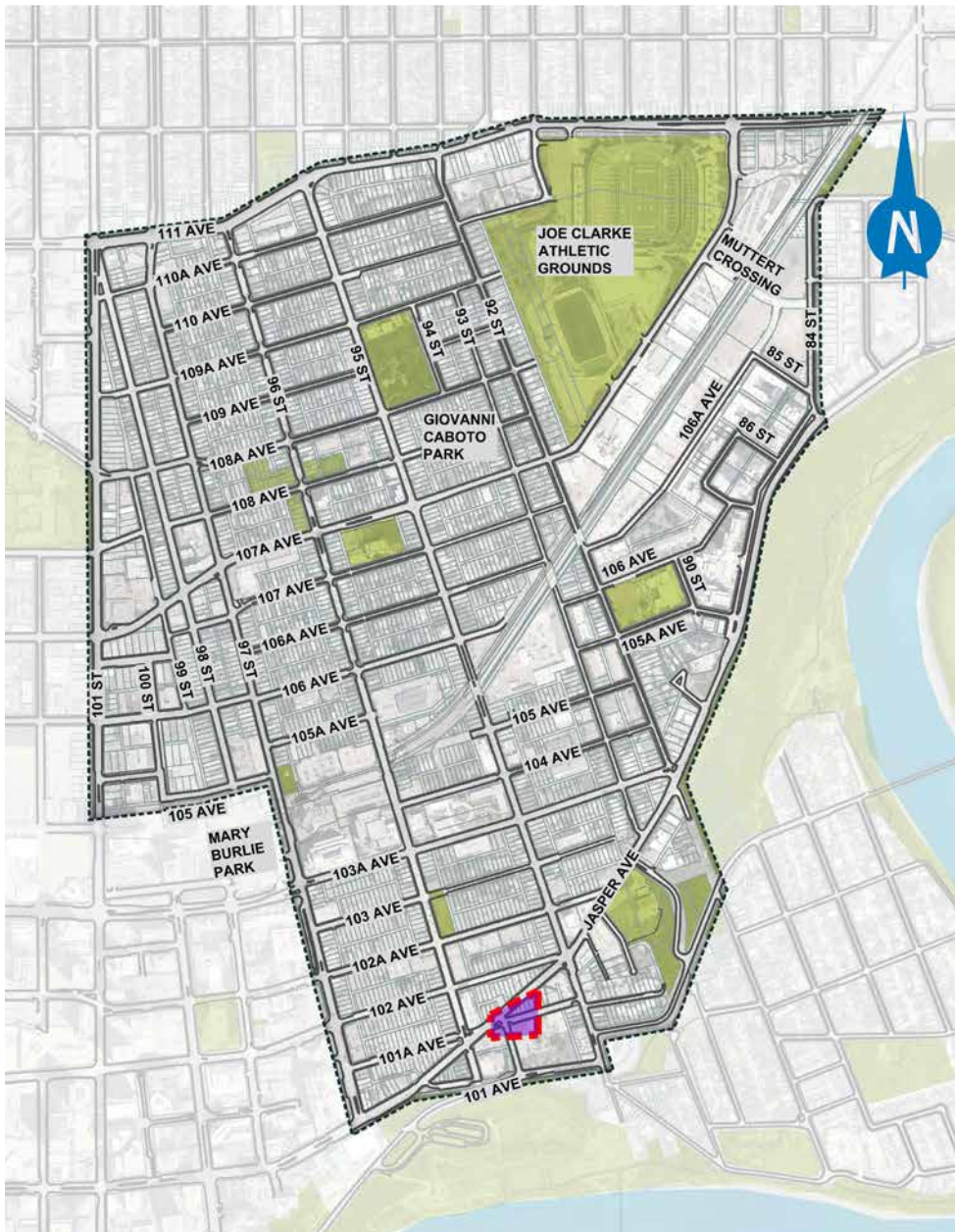
**Input Opportunity:**

Do any of these options resolve the confusion issues at this intersection?

# 101A Avenue / 95A Street – Intersection

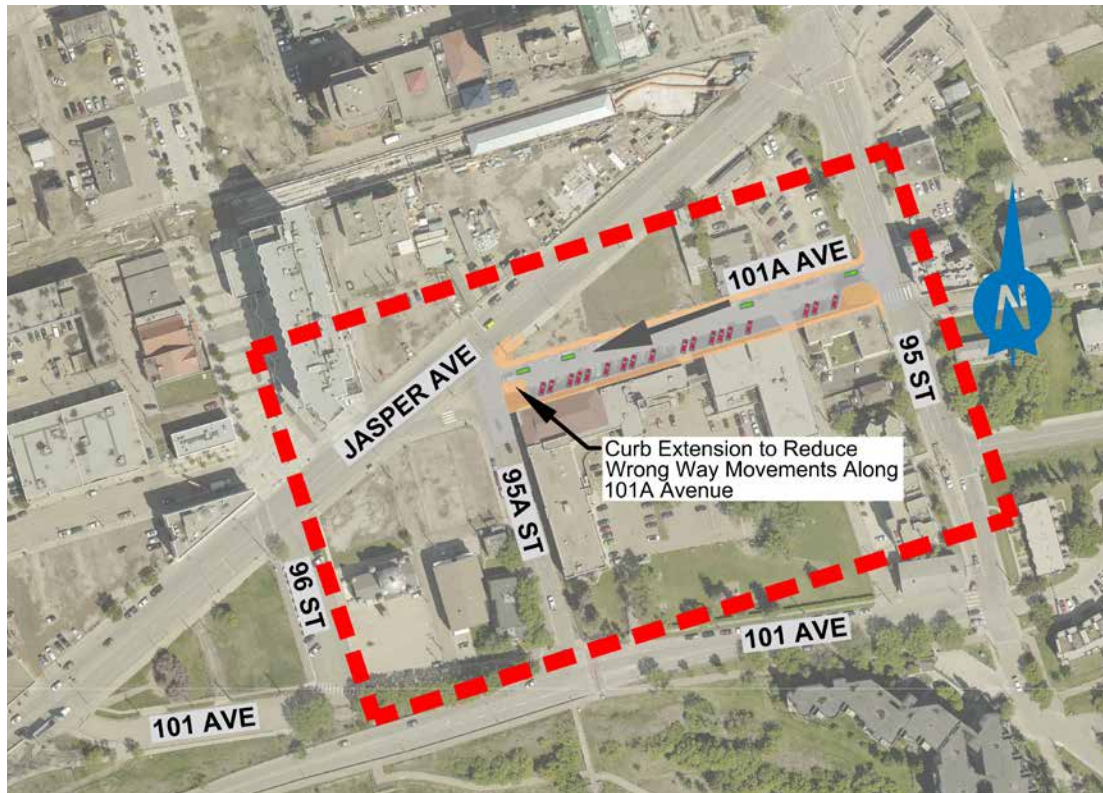
The intersection of 101A Avenue / 95A Street can be confusing and results in frequent wrong-way vehicle infractions along 101A Avenue.

## AREA MAP



To deter wrong way movements onto 101A Avenue one-way westbound the proposed design considers:

- + Narrowing the access to 101A Avenue off of 95A Street



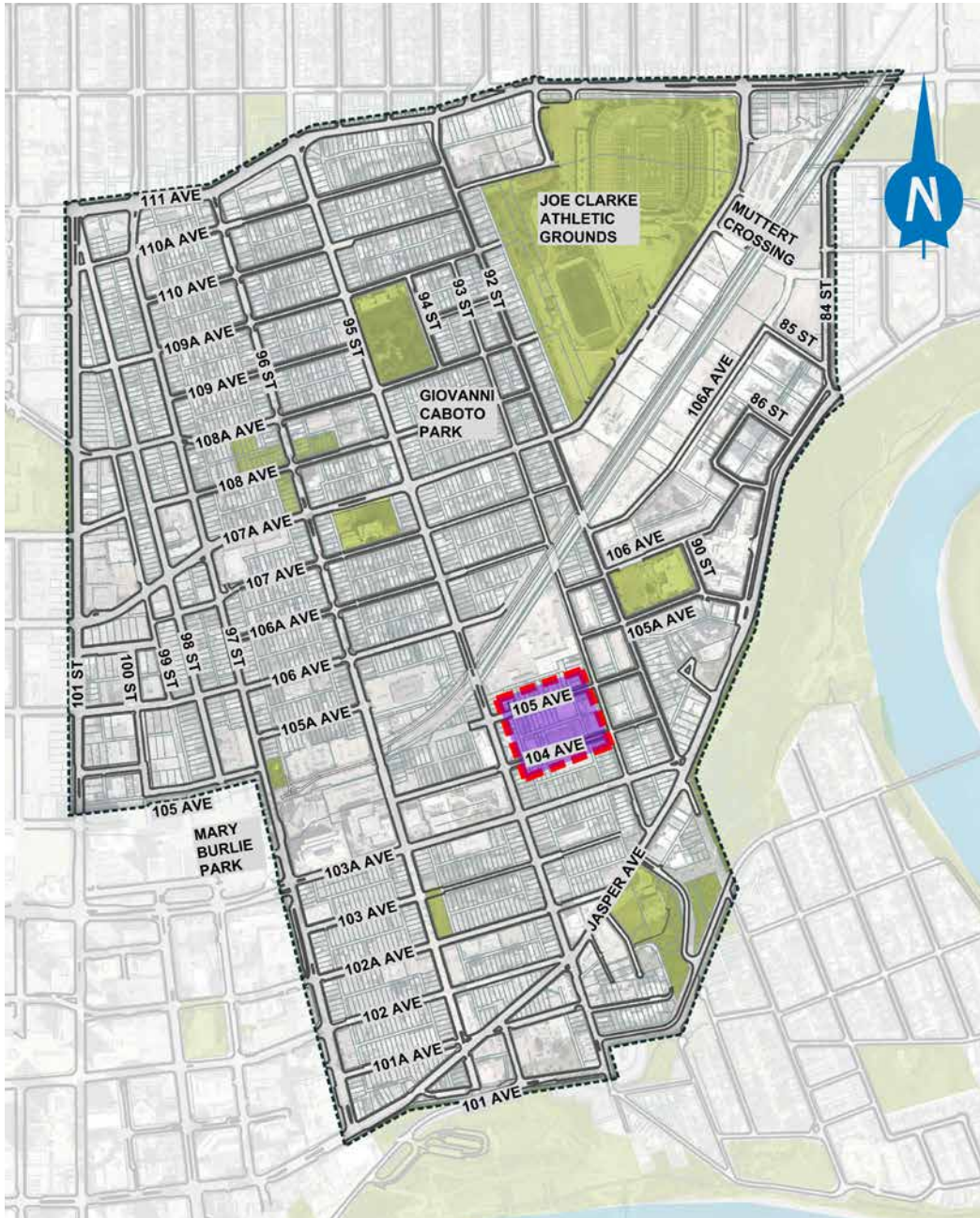
**Input Opportunity:**

What should we consider when planning for this proposed change to narrow the 101A Avenue access off of 95A Street?

# 104 and 105 Avenue Traffic Direction Changes

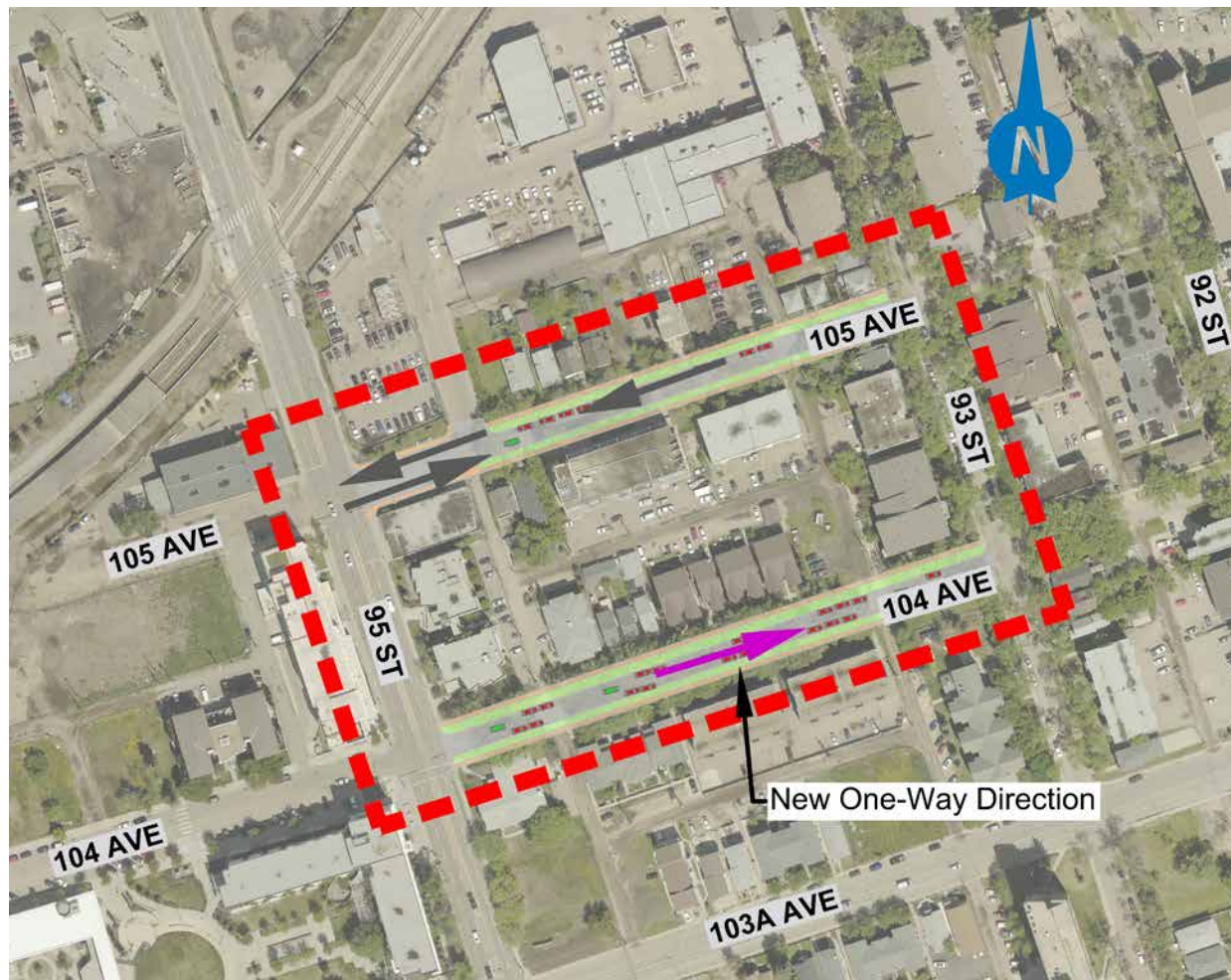
104 and 105 Avenues are both one-way westbound between 95 and 93 Street.

## AREA MAP



To reduce confusion and improve traffic flow into the neighbourhood, the design plan is considering:

- + Changing 104 Avenue to one-way eastbound
- + Keeping 105 Avenue one-way westbound from 93 Street to the alley and two-way from the alley to 95 Street intersection



### **Input Opportunity:**

What should we consider when planning for the proposed design to change 104 Avenue to one-way eastbound and keep 105 Avenue as a one-way westbound?