

# Valley Line West LRT QUARTERLY PROGRESS REPORT - Q3 2025

## PERFORMANCE

This dashboard provides an overview of progress and performance of the Valley Line West (VLW) LRT Project and a summary of work completed by Marigold Infrastructure Partners (MIP) and the City of Edmonton (City).

CUMULATIVE PERFORMANCE	NOTES
<b>COST PERFORMANCE</b> <i>Measures the cost efficiency of the project</i>	Current cost performance is good. The project remains on budget.
<b>SCHEDULE PERFORMANCE</b> <i>Measures the schedule status of the project</i>	As of the end of Q3, construction progress as measured by the independent certifier is 52.2%.
<b>SCOPE PERFORMANCE</b> <i>Measures the current status of scope changes compared to the baseline scope</i>	There have been no significant changes to either MIP's scope of work or other City-contracted scopes of work.
<b>PUBLIC COMMUNICATIONS</b> <i>Most common public inquiries for the period</i>	The most common public inquiries for the period are related to construction, traffic, and other impacts.

## RECENT PROGRESS - SUMMARY

### MIP WORK IN Q3:

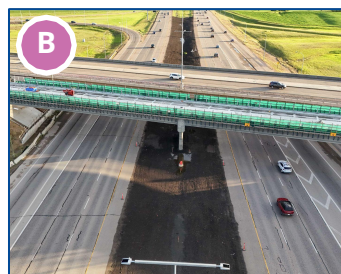
During Q3 2025, design and construction activities progressed across the VLW LRT alignment. Roadworks, drainage, and trackwork in various stages were ongoing in **Areas 1-7**. In **Area 8**, construction continued at the Lewis Farms Storage Facility (*photo A*) along with drainage and utilities work, Overhead Catenary System (OCS), and trackwork. In **Area 7**, work on the Anthony Henday Drive (AHD) LRT bridge (*photo B*) included various concrete work on both the west and east approaches, including special trackwork on the west. In **Area 6**, MIP continued work on the elevated guideway (EG), Misericordia Station, and West Edmonton Mall (WEM) Station (*Photo C*). Utility work continued in **Area 5** (*Photo D*). In **Area 4**, the Stony Plain Road (SPR)/142 St intersection (*Photo E*) was reopened to northbound and southbound traffic in August. In **Area 3**, concrete work continued along SPR (*Photo F*). There was ongoing road and trackwork along 104 Ave in **Area 2** (*Photo G*). In **Area 1**, MIP continued work on sidewalks and streetscaping along 107 St (*photo H*). Gerry Wright Operations & Maintenance Facility B (OMF-B) trackwork, rail installation & alignment, and interior and exterior building construction also continued during this period.

### HYUNDAI ROTEM COMPANY (HRC) WORK IN Q3:

The first LRV arrived in Edmonton in July, was successfully powered, and underwent a water tightness and functional test in August. The second and third LRVs were shipped on Sept 22; the second is expected to arrive in October. Thirteen LRVs have completed their assembly, with 12<sup>th</sup>-13<sup>th</sup> undergoing complete car testing as of September.



Area 8: Lewis Farms Storage Facility construction



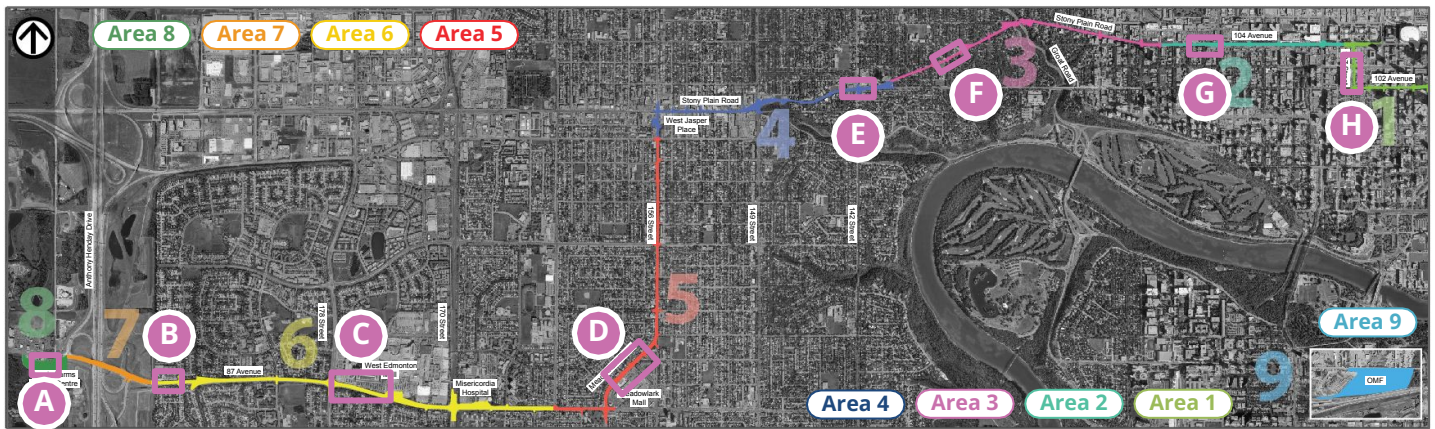
Area 7: AHD LRT bridge construction



Area 6: WEM Station construction



Area 5: Meadowlark Stop underground drainage



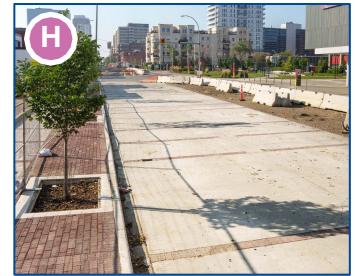
Area 4: SPR/142 St intersection open



Area 3: Glenora Stop concrete work



Area 2: 104 Ave track & road work



Area 1: 107 St sidewalks & streetscaping

## MILESTONES

### AREA COMPLETED MILESTONES

AREA	COMPLETED MILESTONES	COMPLETION DATE
6	Last Elevated Guideway span was lifted into place.	September 2025
4	SPR/142 Street intersection reopened to traffic.	August 2025
5	Utility Complex (UC) 51 auxiliary building delivered.	August 2025
LRV	First LRV has arrived, been assembled, and successfully powered & tested.	July-August 2025

### AREA UPCOMING MILESTONES

AREA	UPCOMING MILESTONES	FORECASTED DATE
2	Complete roads and sidewalks along 104 Ave between 107 & 121 St.	Q4 2025
4 & 5	Complete accelerated roadwork at SPR/149 St & 95 Ave/156 St intersections.	Q4 2025
5	Last remaining UC (52) to be delivered.	October 2025
LRV	LRV #2-8 delivery to Edmonton.	Q4 2025

## KEY ACTIVITY 3-MONTH LOOK-AHEAD

The highlights correspond to the areas of the alignment on the map above.

**Areas 1-6:** Ongoing roadworks, drainage, excavation, duct banks, trackwork, various stops, UC & TPSS construction.

**Areas 2-6:** Track slab construction.

**Area 1:** Relocate the 102 Ave bike lane to 103 Ave. Start full closure for drainage work along 102 Ave.

**Area 2:** Finish removals in early Oct, finish DC cable install, continue embedded track & rail install.

**Area 3:** Continue SPR bridge construction. Start SPR/127 St intersection trackwork.

**Area 4:** Start SPR/151 St & SPR/153 St intersection track work. Finish SPR/149 St accelerated roadwork.

**Area 5:** Continue landscaping at 156 St/92-95 Ave.

**Area 6:** Continue work on WEM & Misericordia Stations (stairs, fireproofing, structural steel works). Dismantle

gantry. EG: finish LRV barrier installs, plinth construction.

**Area 7:** Continue AHD Bridge construction (plinth, railing, LRV barrier, overhangs). Finish east approach deck & walkway.

**Area 8:** Ongoing Lewis Farms Storage Facility construction, including apron slab construction, mechanical & electrical installs, interior walls, elevator installation. Ongoing sidewalk installs, trackwork. *LRV area:* complete slabs, complete mechanical works

**Area 9:** Continue to install ballast for yard tracks, direct fixation track install. Start maintenance & wash track. Continue interior construction work, including wall, painting, mechanical & electrical work.

**LRVs:** Continue LRV manufacturing in Korea. LRV delivery continues within this period.