

PERFORMANCE

This dashboard provides an overview of progress and performance of the Valley Line West LRT Project and a summary of work completed by Marigold Infrastructure Partners (MIP) and the City.

CUMULATIVE PERFORMANCE

NOTES

COST PERFORMANCE

Measures the cost efficiency of the project

Current cost performance is good. The project remains on budget.

SCHEDULE PROGRESS

Measures the schedule status of the project

As of the end of Q1 2022, the project's schedule performance is good.

SCOPE PERFORMANCE

Measures the current status of scope changes compared to the baseline scope

There have been no significant changes to either MIP's scope of work or City-contracted scope of work.

PUBLIC COMMUNICATIONS

Most common public inquiries for the period

The most common public inquiries for the period are related to **vendor opportunities, construction impacts, traffic and access closures.**

RECENT PROGRESS

A summary of construction progress along the alignment. Several examples are shown in the pictures below.

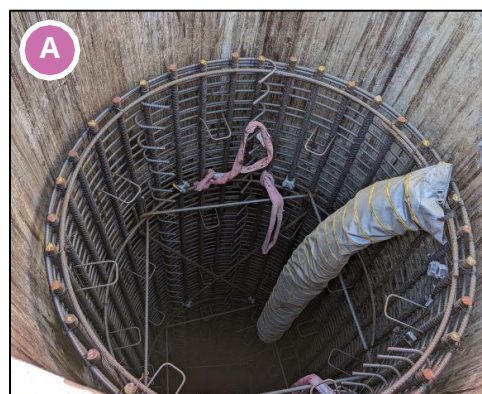
Marigold Infrastructure Partners (MIP) work in Q1: MIP

continued to progress their designs this quarter. Construction work (performed by MIP and its subcontractors) focused largely on utility relocations, grading, drainage and other preparatory activities. Throughout Q1, the majority of MIP's construction work consisted of piling and other foundation work for the elevated guideway along 87 Avenue in Area 6 (Figures A). Eleven piles were completed over the quarter, including piles at the 170 Street intersection (Figure B) and east along 87 Avenue past the future Misericordia Station. Utility work included sewer installation, relocations of overhead lines to underground and other cabling and cutover work. Other preparatory work included tree removals, grading and the construction of laydown areas (Figure C).

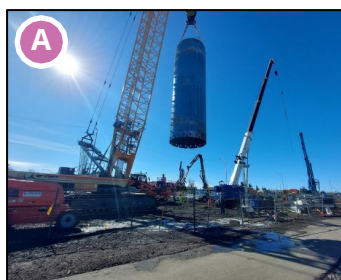
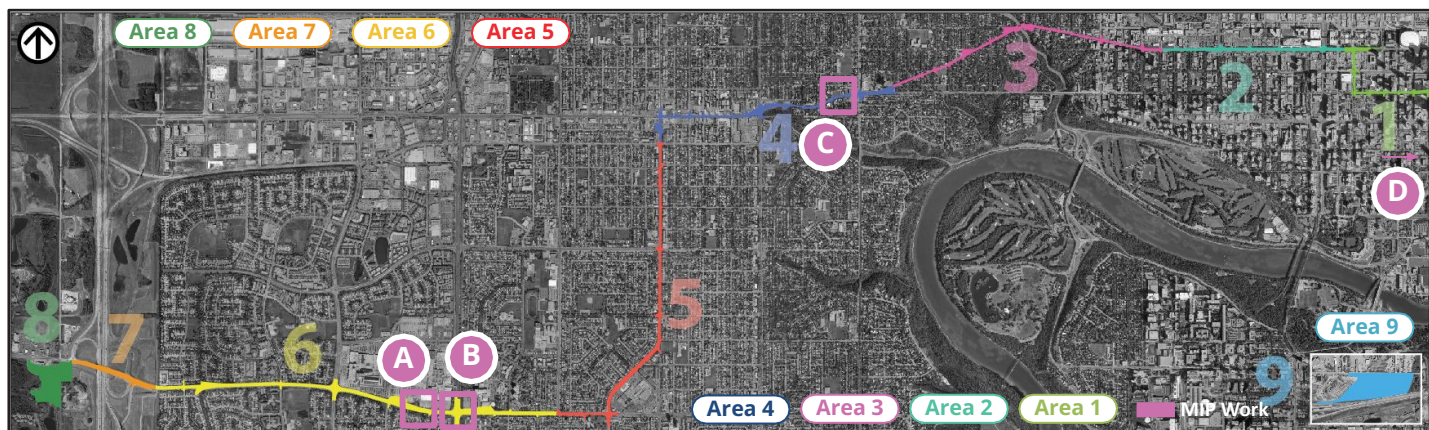
Hyundai-Rotem Company (HRC) work in Q1: HRC continued LRV (Light Rail Vehicle) design work throughout Q1. In March, HRC visited Edmonton to meet the team and tour existing facilities (Figure D).



Area 6 - Elevated Guideway piling on 87 Avenue



Area 6 - Elevated Guideway piling on 87 Avenue



Area 6 - 87 Avenue piling



Area 6 - Elevated Guideway piling on 170 Street



Area 4 - Site Office / Laydown Yard on 143 Street and Stony Plain Rd.



Hyundai-Rotem's site visit to existing low-floor LRT facilities in Edmonton

MILESTONES

AREA	COMPLETED MILESTONES	COMPLETION DATE
Design	First final design civil-scope submissions received for Areas 4 & 5	Q1 2022
6	11 piles completed on the elevated guideway along 87 Avenue	Q1 2022
LRV	City and Hyundai-Rotem held concept design review kick-off meeting	Q1 2022
AREA	UPCOMING MILESTONES	FORECASTED DATE
4 & 5	Start of construction in Areas 4 and 5	Q2 2022
6	Start of construction on elevated guideway columns along 87 Avenue	Q2 2022

KEY ACTIVITY 3-MONTH LOOK-AHEAD

The highlights correspond to the areas of the alignment on the map above.

Area 1: Detailed coordination efforts for ATCO Gas work on 102 Avenue between 102 and 103 Street will resume in April.

Area 4: Bus stop relocation, sidewalk removals, tree removals and other work set to commence in April following final civil and drainage design.

Area 5: 156 Street and 94 Avenue utility corridor excavation and grading to commence in May. Bus stop relocation, sidewalk removals, tree removals and other work set to commence in May following completion of early sewer work on 156 Street.

Area 6: Misericordia Station foundation construction to commence in May. Drilled shaft construction for the elevated guideway planned to continue through Q2.

Area 8: Early sewer work in Lewis Farms resumed in March and will continue through May. Preparations for the Lewis Farms Park & Ride to commence in May. Construction of EPCOR's distribution and transmission system on 199 Street and the foundations for the Lewis Farms storage facility are planned to start in April.

Area 9: Site preparations and Trans Mountain pipeline mitigation work for the Gerry Wright Operations and Maintenance Facility (Phase 2) to commence in April.

Project-wide: Bus stop relocations, sidewalk closures or relocations and tree removals are planned to commence in May. Wet utilities drainage installation scheduled to occur in May.

Light Rail Vehicles (LRVs): LRV design to continue in Q2.