





FOR CONTINUATION  
REFER TO PAGE 2

FOR CONTINUATION  
REFER TO PAGE 4

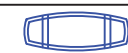
#### ADAPTABLE CURB EXTENSION

An adaptable curb extension extends into the roadway, either at crossings or midblock and helps to define the use of the road. They are typically placed to provide shorter crossing distances near pedestrian crossings or to help define where parking is permitted.

Photo of an adaptable curb extension on Allard Boulevard & Anthony Crescent, as part of the Allard Street Lab.



#### LEGEND



TRAFFIC CALMING CURB



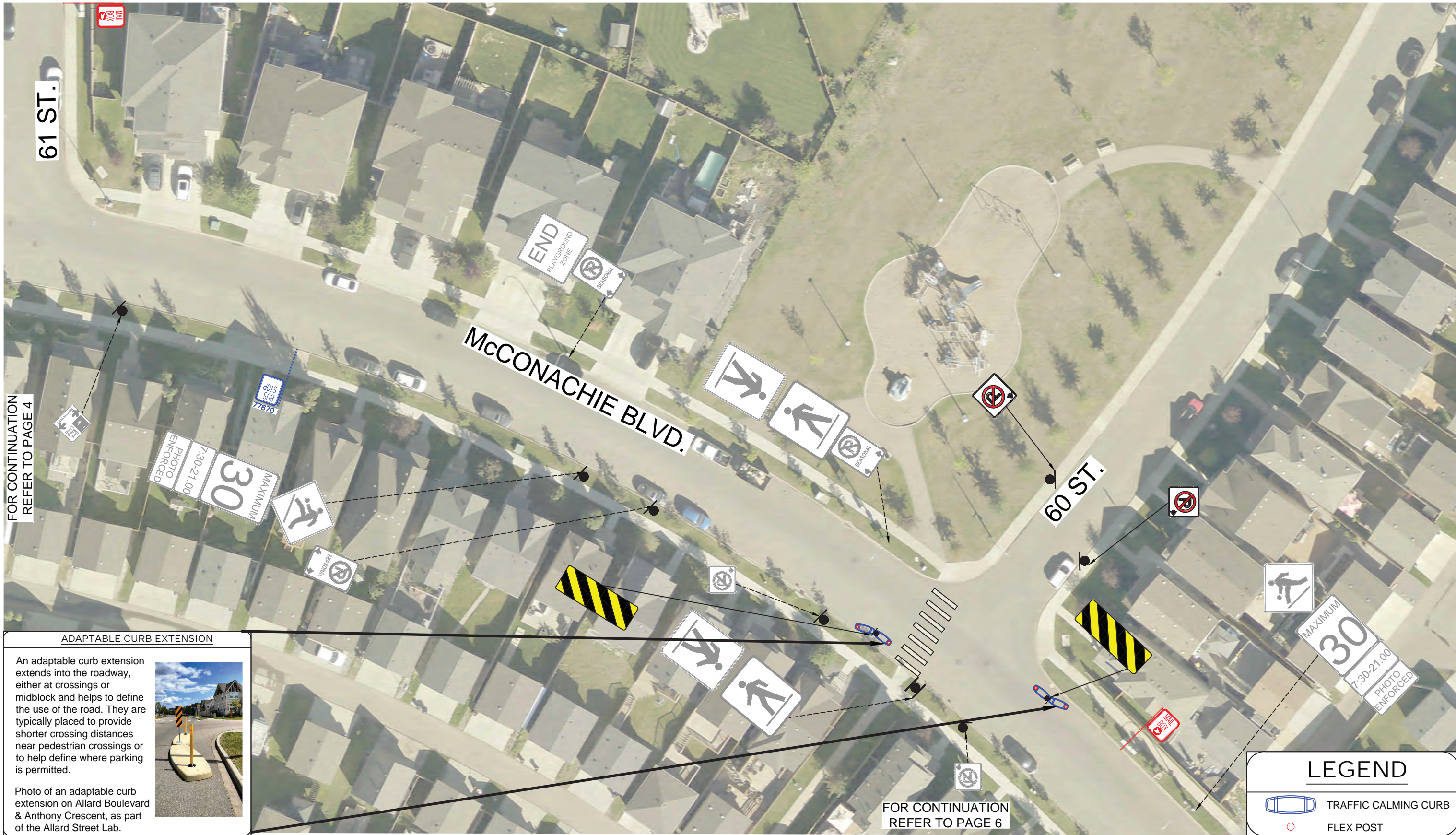
FLEX POST



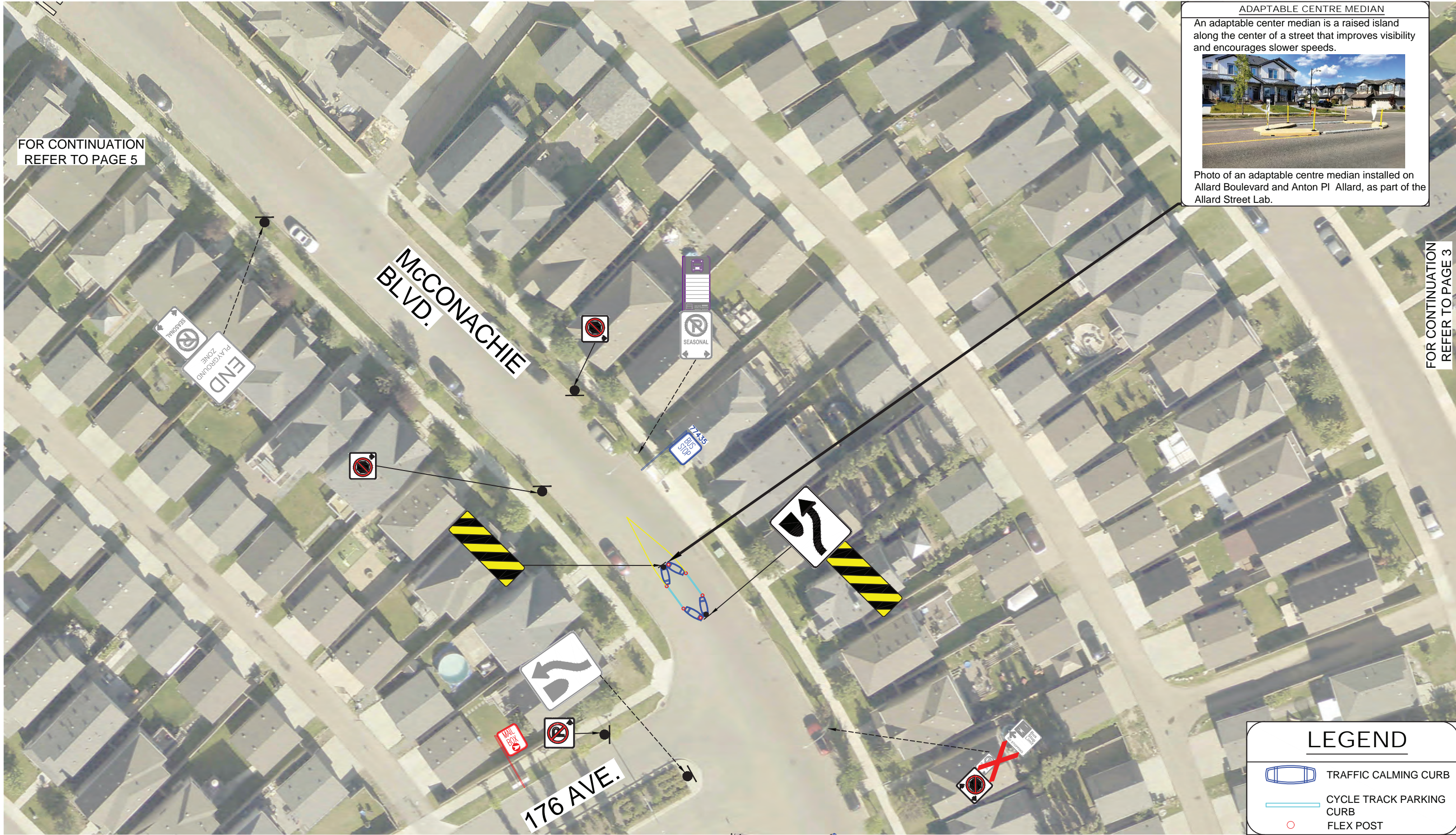
















FOR CONTINUATION  
REFER TO PAGE 6

#### ADAPTABLE CENTRE MEDIAN

An adaptable center median is a raised island along the center of a street that improves visibility and encourages slower speeds.



Photo of an adaptable centre median installed on Allard Boulevard and Anton PI Allard, as part of the Allard Street Lab.

FOR CONTINUATION  
REFER TO PAGE 8

#### SPEED TABLE

A speed table is installed on the roadway. It helps to reduce speeds and increase safer driving behaviors.



Photo of a Speed Table on Gault Blvd. and East of Colonel Stone, as part of the Speed Hump and Speed Table Program.

#### LEGEND

- TRAFFIC CALMING CURB
- CYCLE TRACK PARKING CURB
- FLEX POST

