

What We Decided Report Terwillegar Drive: Stage Three Preliminary Design 2024

edmonton.ca/TerwillegarDrive

| SHARE YOUR VOICE
SHAPE OUR CITY

Edmonton

ABOUT THE PROJECT

Terwillegar Drive is a key north–south route connecting Edmontonians across the city. The road has exceeded its transportation capacity. To accommodate the area's growth, a three–stage plan has been approved to alleviate congestion and provide all users with a safe and efficient route.

Stage One of the Terwillegar Drive Expansion Program includes all road upgrades to Terwillegar Drive from Anthony Henday Drive to Whitemud Drive. Terwillegar Drive Stage Two builds on Stage One, including additional upgrades to increase the capacity of Terwillegar Drive, improve safety, accommodate current and planned transit services, and enhance existing active transportation connections. Stage Three includes road widening, Terwillegar Drive and Anthony Henday Drive interchange upgrades, dedicated transit lanes and a shared pathway.

This report highlights what we heard during the Stage Three concept design engagement phase (April/May 2022) and what was incorporated into the preliminary design.

What we presented in 2022

In spring 2022, a draft interchange concept design for Stage Three was shared with the public and stakeholders for feedback. It considered feedback from previous engagement activities conducted in support of Stage One, along with technical requirements and City/Provincial plans and policies. Stage Three includes:

- + Upgrades to the Terwillegar Drive / Anthony Henday Drive interchange
- + Terwillegar Drive / 170 Street widening
- + Transit lanes connecting to Stage One
- + A new shared pathway connecting South Terwillegar to Ambleside

Concept Design (2022)

The draft interchange concept design was a separated partial cloverleaf (parclo). It included a shared pathway for those who walk, bike and roll across Anthony Henday Drive, connecting Haddow, Terwillegar South and Terwillegar Towne on the north side with Windermere and Ambleside on the south side, and tying into the existing sidewalk and shared pathway on Windermere Boulevard.

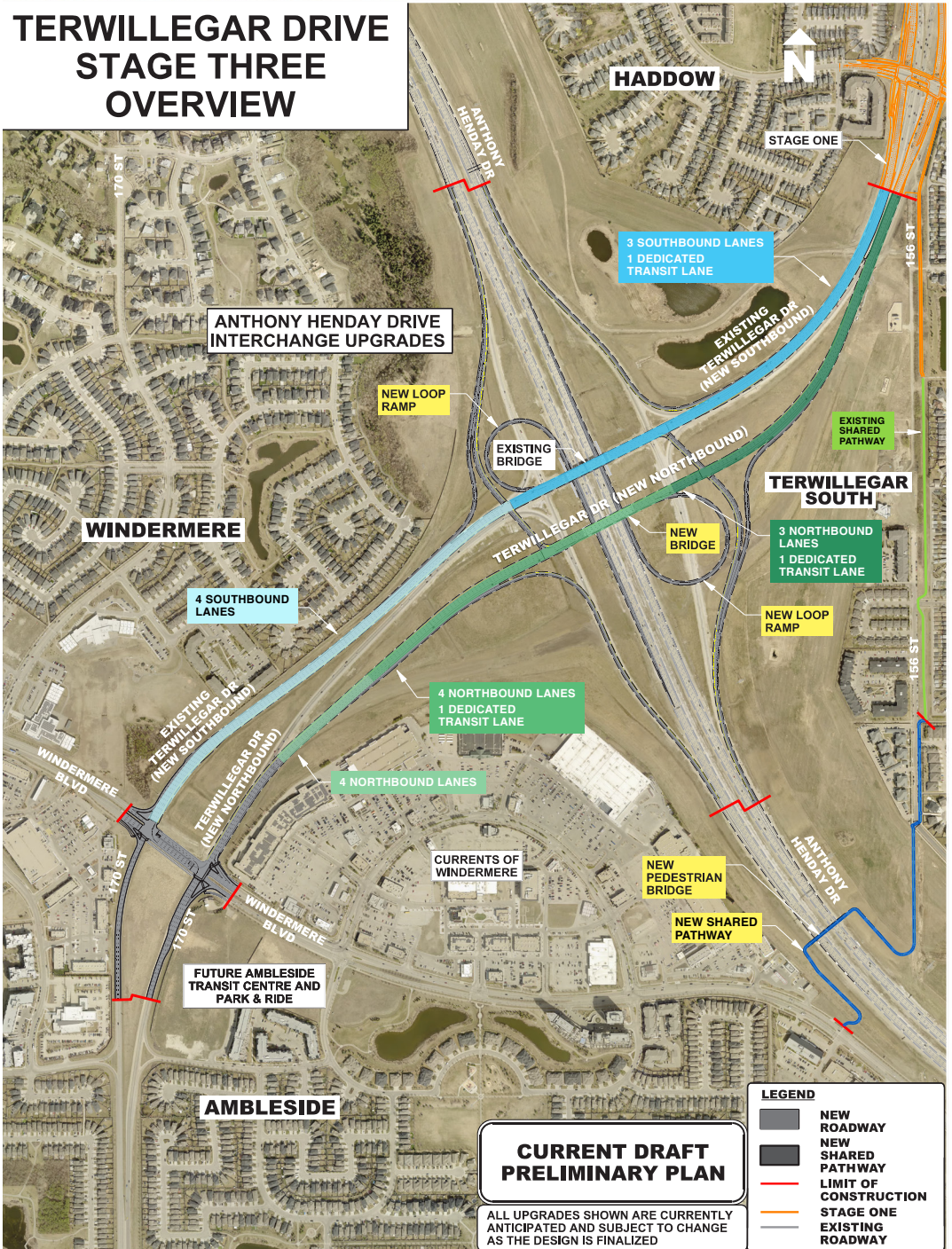
The concept design also included dedicated transit lanes from Windermere Boulevard across the interchange to match the dedicated transit lanes being constructed as part of Terwillegar Drive Stage One.

Preliminary Design (2024)

The preliminary design of Stage Three has progressed, retaining most of the features outlined in the concept plan. The preliminary design includes new northbound lanes, three lanes in each direction and loop ramps. The design also includes **the following changes** from the concept design (2022):

- + The shared pathway has been separated from the roadway and will connect the recently completed Stage One shared pathway in South Terwillegar to Ambleside with a new pedestrian bridge over Anthony Henday Drive, located between Terwillegar Drive and Rabbit Hill Road just east of the Currents of Windermere. This crossing is safer for active transportation users and improves connectivity from South Terwillegar to Windermere. The shared pathway is planned to be lit to provide added safety for users.
- + In the northbound direction, the starting point of the dedicated transit lane has been moved north of Windermere Boulevard, about 300 metres south of the interchange. The lane is still expected to provide reliable and fast accommodation of planned transit services. No changes were made to the southbound dedicated transit lane, which will end just south of the interchange.

The preliminary design for the Terwillegar Drive/Anthony Henday Drive interchange is shown below:



Included in the table below is a summary of what we heard during spring 2022 engagement and what is included in the Stage Three preliminary design which will be constructed.

What we heard	What we decided
Ensure the shared pathway is appropriately connected to existing active transportation network, as well as key destinations.	The preliminary design includes a shared pathway which connects the recently completed Stage One shared pathway in South Terwillegar to the existing shared pathway on Windermere Boulevard, east of the Currents of Windermere.
Additional and direct connections into the Currents of Windermere shopping area are desired, including a connection to the 'back' of the property	The preliminary design includes a shared pathway which connects directly to the existing shared pathway east side of the Currents of Windermere.
Connections to other destinations are desired including the Terwillegar Recreation Centre and the shared pathway which runs under the Anthony Henday Drive bridge.	The preliminary design includes a shared pathway which connects to the recently completed Stage One shared pathway in South Terwillegar. The Stage One shared pathway provides direct connectivity to the Terwillegar Recreation Centre.
The shared pathway should be a safe distance away from vehicle traffic with a separation between bikes and pedestrians.	The preliminary design includes a shared pathway and bridge across Anthony Henday Drive that is separate from the roadway, providing a comfortable and safe connection. Bikes and pedestrians will share the space.
Ensure that signal timings are long enough for safe crossings across the many lanes of traffic to be crossed at the interchange.	The preliminary design does not require pedestrians and cyclists to cross the interchange.
A desire to grade-separate the shared pathway from the roadway or safety.	The preliminary design includes a shared pathway and bridge across Anthony Henday Drive that is separate from the roadway and safer for all users.
A concern that the signalized crossings for shared pathway users will negatively impact traffic flow.	The preliminary design does not require pedestrians and cyclists to cross the interchange.
Appropriate lighting is desired along the shared pathway for safety and security.	Lighting will be provided along the shared pathway consistent with what has been constructed on the new shared pathway in Stage One.
Benches and trees are desired along the shared pathway for comfort and experience.	Benches and trees will be provided along the shared pathway.

What we heard	What we decided
Suggestions that the transit lanes could better serve commuters if available to all vehicles.	The dedicated transit lanes remain in the preliminary design to ensure the rapid and reliable accommodation of planned transit services. The proposed design will reduce congestion and improve traffic safety.
Suggestions that the dedicated lanes be extended further south into Windermere or to Ellerslie Road.	The dedicated transit lanes are not currently planned to extend further south into Windermere or Ellerslie Road as a part of this project.
A desire for the dedicated transit lanes to become high occupancy vehicle lanes for carpool, rideshare, taxi, Uber, etc. which would encourage shared driving.	The inclusion of dedicated transit lanes along Terwillegar Drive reflects public feedback, direction from City Council, funding requirements and alignment with City plans and policies. The implementation of high occupancy vehicle lanes on Terwillegar Drive was considered during the planning process, but not recommended given the City's Mass Transit Plans identify Terwillegar Drive as critical Bus Rapid Transit corridor requiring a high level of priority to ensure the continued growth of fast and reliable transit services.

For more project updates and information on the Terwillegar Drive expansion, please visit edmonton.ca/TerwillegarDrive