



Traffic Safety Upgrades Coming to Highlands

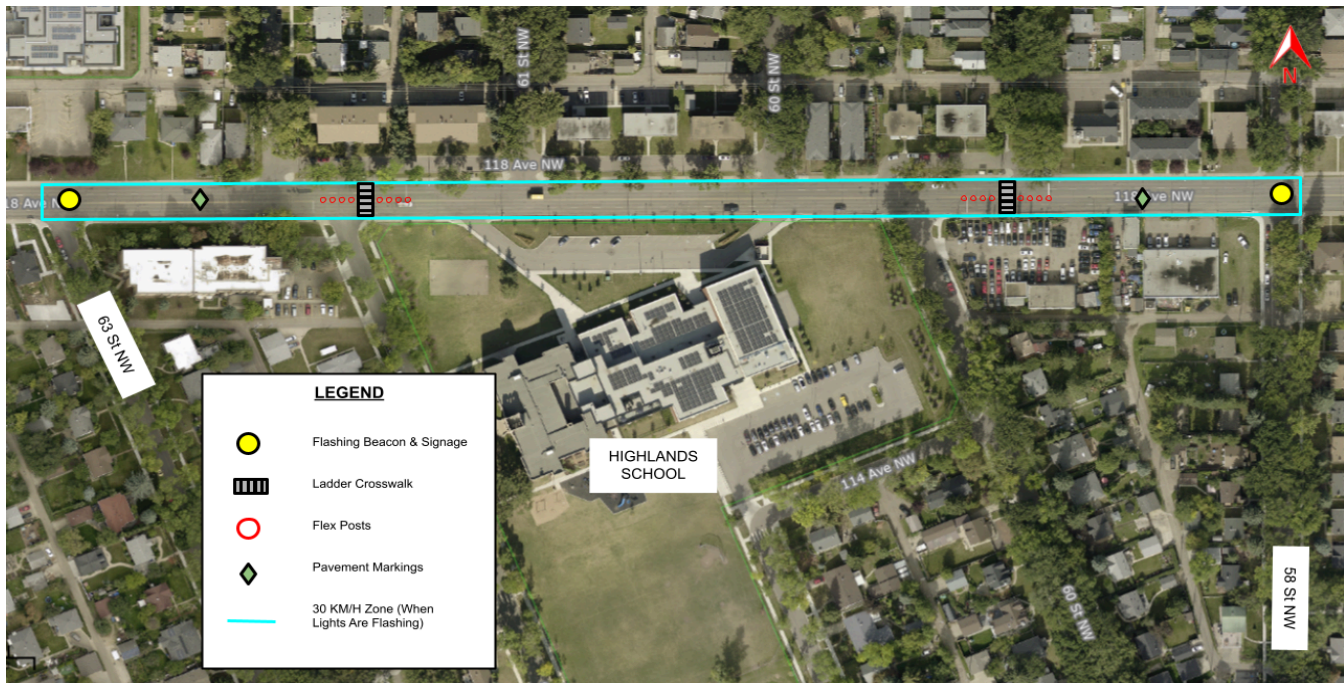
The City of Edmonton is installing new traffic safety measures on 118 Avenue in **the Highlands School area!**

Project Background

Since the opening of the new Highlands School site on 118 Avenue, the City has received feedback from residents and the school community regarding high speeds and pedestrian safety. 118 Avenue is a 50 km/h arterial roadway designed to carry higher volumes of traffic. Arterial roads adjacent to schools are not designated as playground zones and, as a result, do not have reduced speed limits when school is in session.

Traffic Safety Upgrades




The City of Edmonton is trialling innovative approaches to evaluate how to improve safety at schools along 50 km/h roadways by introducing lower speed limits at key times of the day. Safety upgrades are planned to be installed by September 2, weather and resource permitting. Please note that the measures may be installed at different times.



Map of project area. See table on back for more information on each upgrade.

Next Steps

After the measures are installed, the City will continue to monitor traffic data in the area to determine if any adjustments are needed. Community members can inform the City about any operational challenges or maintenance needs related to the installed measures by calling 311.

Installation and Location	Benefit	Example
<p>Safety concern identified: High driver speeds along 118 Avenue</p> <p>What We're Installing: A 30 km/h speed limit (in effect when flashing beacons are active) along 118 Avenue between 58 Street and 63 Street. The beacons will be active during key times of day when there is an increase in student activity along 118 Avenue. Hours include:</p> <ul style="list-style-type: none"> • 8:00 - 8:45 a.m. • 11:45 a.m. - 12:45 p.m. • 3:00 - 3:45 p.m. (Monday, Tuesday, Wednesday, Friday) • 2:00 - 2:45 p.m. (Thursday, to accommodate early dismissal at Highlands School) 	<p>The speed limit reduction will:</p> <ul style="list-style-type: none"> ✓ Reduce the risk of crashes and pedestrian injuries ✓ Improve the safety of children walking, biking and rolling to and from school 	 <p><i>Example of flashing beacons, Municipality of Clarington</i></p>
<p>Safety concern identified: High driver speeds along 118 Avenue</p> <p>What We're Installing: Pavement markings to support the speed limit reduction</p>	<p>The pavement markings will:</p> <ul style="list-style-type: none"> ✓ Visually narrow the road to encourage slower driver speeds ✓ Notify drivers that they are entering a school area 	 <p><i>Example of 'Dragon's Teeth' pavement markings, City of Kingston</i></p>
<p>Safety concern identified: Pedestrian safety concerns along 118 Avenue</p> <p>What We're Installing: Refreshed crosswalk markings and flexposts around two pedestrian signals on 118 Avenue</p> <p>Flexposts will be removed prior to the first snowfall to accommodate snow and ice clearing</p>	<p>The flexposts will:</p> <ul style="list-style-type: none"> ✓ Encourage slower driver speeds on approach to the pedestrian crossing ✓ Improve the visibility of the crosswalk and improve the safety of students crossing the street 	 <p><i>Example of flexposts on approach to a crosswalk, City of Edmonton</i></p>