



Planning & Environmental
Services

Edmonton

**Sanitary Servicing
Strategy Fund
2023 Annual Report**

June 2024

Message from the Chair

This is the 24th annual report of the Sanitary Servicing Strategy Fund (SSSF) program. Since the program's inception, it has successfully supported growth and development in Edmonton by financing major remote offsite sanitary trunk infrastructure.

Implementation of The City Plan and EPCOR's Sanitary Integrated Resources Plan (SanIRP) require new approaches to city building in consideration of shifting growth patterns and new approaches to planning sanitary infrastructure in ways that account for updated standards, flow trends and modern technologies. The SanIRP means changes in projects, priorities, and spending, and requires the SSSF program to evolve to reflect this new planning approach.

In 2023, with the approval of the SSSF Oversight Committee, the SSSF Transformation project was initiated. The project will explore options for a new rate structure that meets the needs of the new planning and infrastructure approach and aligns with The City Plan's objectives related to growth. The project will also be important in evaluating how the funds accumulated to date can be used in alignment with the intent for which they were collected. The project will involve significant engagement with the development industry and EPCOR and is expected to be completed by the end of Q1 2025.

The SSSF fund had a closing balance of \$103.42 million at the end of 2023, compared to \$70.61 million at the end of 2022. The SSSF program continues to meet Edmonton's mid term development needs, with capacity to be flexible if necessary. Due to lower than projected spending, the cash flow model predicts an upward trend in the cash reserve in the short-to-mid term.

The City looks forward to jointly exploring ways to evolve the SSSF program with EPCOR and the development community; a cooperative relationship that has been the hallmark of success for the SSSF program in supporting growth in Edmonton for a quarter of a century.

Howaida Hassan, P.Eng.

Director

Urban Growth & Open Space



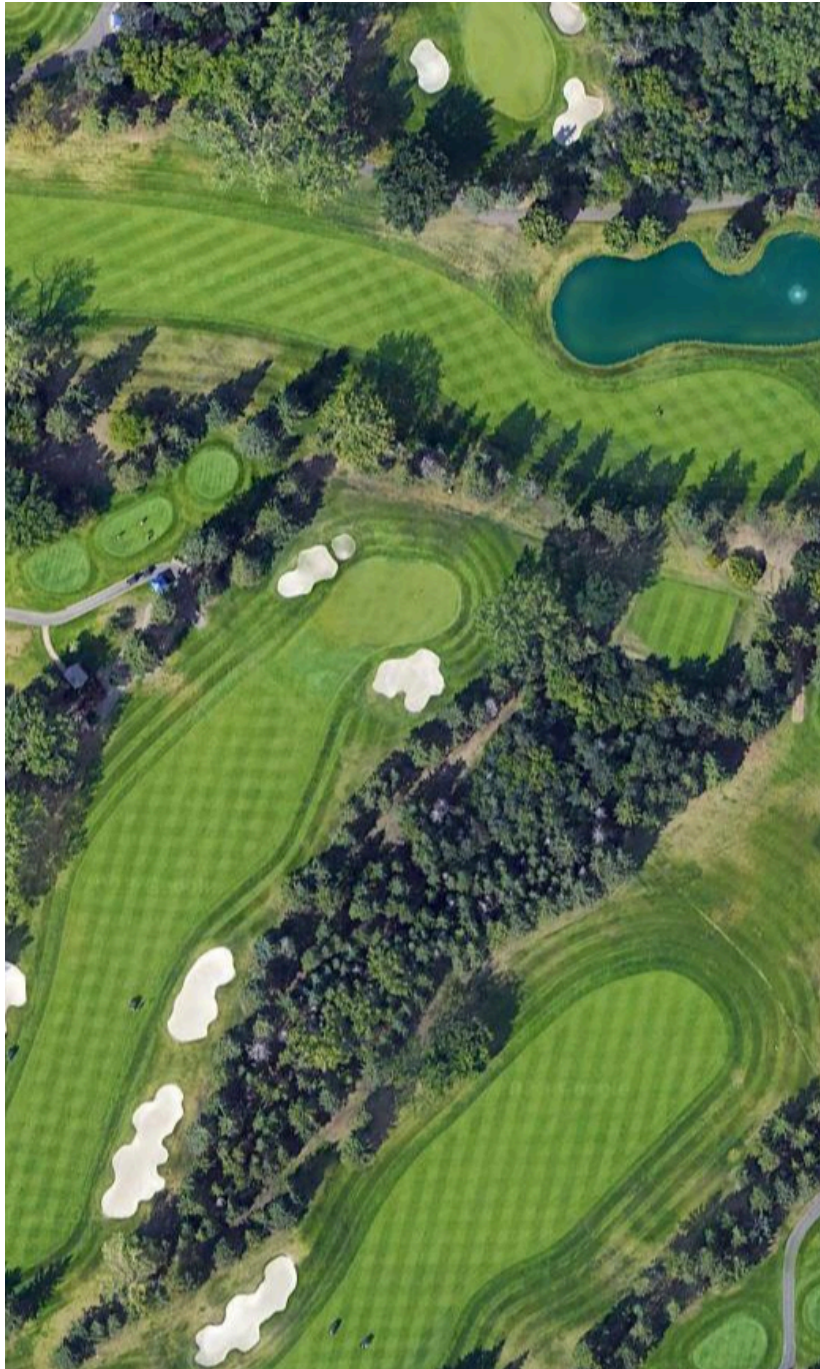


TABLE OF CONTENTS

Message from the Chair	1
Executive Summary	3
1.0 Planning and Construction Activities in 2023	5
1.1 Planning Projects	5
1.2 Construction Projects	7
2.0 SSSF Oversight and Sub-Committees	10
3.0 Three-Year Construction Plan	11
4.0 Fund Balance	12
4.1 Statement of Fund Activities & Balance	13
4.2 Three-Year Cash Flow Projection	18

List of Tables

Table 1 – Three-year Construction Plan	11
Table 2 – Statement of Fund Activities and Balance	13
Table 3 - SSTC Rates	19
Table 4 - EA Rates	19
Table 5 – Three-year Revenue and Expenditures Projection	20

List of Figures

Figure 1 – Approved Changes to SSSF System Plan Map	5
Figure 2a – NEST NC2/NC3, Undercut Excavation	7
Figure 2b – SESS SW4 Completed Tunnel with Liner	7
Figure 2c – SESS SA10a, Retrieval Shaft	8
Figure 3 – SSSF Major Sanitary Trunks Map	9
Figure 4 – SSSF Governance Structure	10
Figure 5 – SSSF 2023 Revenue Breakdown	15
Figure 6 – SSSF Historical Revenue Breakdown	16
Figure 7 – SSSF Historical Revenue and Expenditures	17

Executive Summary

The Sanitary Servicing Strategy Fund (SSSF) is a program managed by the City of Edmonton that pays for the deepest and largest sanitary sewer infrastructure in Edmonton. For 24 years, the fund has played a crucial role in supporting growth by enabling the construction of major sanitary trunks in Edmonton. It is primarily funded through fees from developers and builders with some contributions from the sanitary utility (initially from the City, then EPCOR after the transfer of drainage services in 2017). It is overseen by the Oversight Committee consisting of representatives from the City, the development industry and EPCOR. This representation ensures the committee is well-equipped to make informed recommendations to City Council. As the utility regulator, City Council has ultimate decision-making authority.

Since the inception of the program in 1998, the fund has been remarkably successful in its mandate to support growth and facilitate new development in Edmonton. To date, the SSSF has funded the construction of over 43 km of sanitary trunks at a cost of \$357 million. This report provides details about the planning and construction activities completed in the past year. In 2023, the SSSF provided funding to continue the construction of the following projects:

- A tunnel segment in the south (SW4) to support growth in southwest Edmonton
- The NC2/NC3 tunnel in north Edmonton
- The SA10a tunnel to support industrial development in southeast Edmonton

Upcoming projects reflect EPCOR's commitment to right-sizing infrastructure and reviews that indicated that water consumption (and subsequently sanitary flows) are lower than anticipated. Coupled with the expected impact of future measures to minimize inflow and infiltration (I&I), EPCOR has determined that reduced infrastructure will suffice to service growth. A review of servicing concepts for the Riverview area led to a recommendation to service this area through the West Edmonton Sanitary System (WESS), rather than through the South Edmonton Sanitary System (SESS). This has eliminated the need for the previously planned SW6 and SW7 segments, including a complex river-crossing. However, a pump station and forcemain are required to connect the area to the WESS system instead. In addition, EPCOR reviewed the servicing plan of the Windermere area and concluded that the previously planned SW5 segment is also no longer required. The review and elimination of these segments from the original capital plan has resulted in significant environmental and financial optimizations. Using a similar approach, EPCOR is developing a Sanitary Integrated Resource Plan (SanIRP) including trunk master plans (TMPs) that will provide an opportunity to revisit the long-term system plan while considering the new drainage standards, flow trends and modern technologies.

In response to the changing context of development patterns and the sanitary planning paradigm, City Administration initiated the SSSF Transformation Project, a comprehensive review of the SSSF program including the rate structure. The goal is to



2023 SSSF Annual Report

determine the optimal rate structure that will align with the City’s growth objectives and EPCOR’s planning approach. This work could result in changes to the development fees for future developments.

In light of the anticipated upcoming changes to the SSSF rate structure resulting from the Transformation Project, Administration recommended that the rates be held steady for 2024, and Expansion Assessment rates be equalized across the three basins. Rates were also maintained in 2023, meaning that the rates are the same as in 2022. Given high inflation rates, this represents an effective decrease in rates. Furthermore, Administration recommended the equalization of the Expansion Assessment rates, resulting in the WESS rate being lowered to equal the SESS and North Edmonton Sanitary Trunk (NEST) rates, effective January 1, 2024. The Oversight Committee approved these changes. The fund's closing balance at the end of 2023 was \$103.42 million, an increase from the 2022 year-end balance of \$70.61 million. The SSSF Committees will continue to monitor the fund to ensure that the program is able to achieve its intended objectives.

1.0 Planning & Construction Activities in 2023

The following section outlines the planning and construction activities that were completed or underway in 2023.

1.1 Planning Projects

Riverview Area Servicing Plan Review

EPCOR Water Services Inc. (EWSI) re-evaluated the sanitary servicing plan for the Riverview area and concluded that the WESS system is sufficient to meet the needs of this area. This change avoids a complex river crossing previously planned to connect the area to the SESS system, and eliminates the need for two planned trunk segments (SW6 and SW7), resulting in major cost savings and mitigated environmental impacts. In lieu of these segments, a pump station and a force main need to be added to the system plan as seen in Figure 1. The system would also use the existing Edgemont pump station to discharge flow to the downstream sanitary trunk.

The SSSF Oversight Committee reviewed and concurred with the new servicing plan. A report was prepared for presentation to Utility Committee in January 2023. The recommended changes will not only result in reduced environmental risks associated with the construction and operation of a river crossing, but also lead to significant cost savings to the fund.

Sanitary Integrated Resource Plan (SanIRP)

EPCOR continued to develop the Sanitary Integrated Resource Plan (SanIRP) project to review the servicing needs for the entire city, taking into account updated standards, new flow trends and expected decrease in inflow/ infiltration resulting from implementation of the Stormwater Integrated Resource Plan (SIRP). Although the cost of preparing the SanIRP is not funded by the SSSF, its results may impact the SSSF servicing plan.

The review recommended that the Riverview Area be serviced through the WESS system, which eliminates the environmental risks associated with a complex river crossing and impacts the fund positively.

EPCOR is undertaking the SanIRP project to review servicing needs in consideration of the updated standards and recent flow trends.

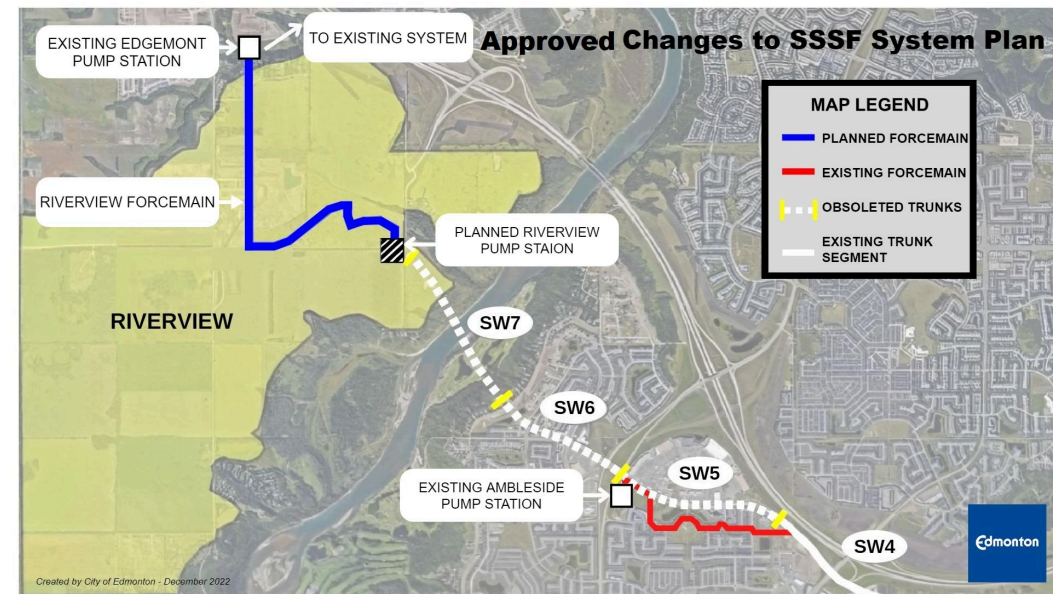


Figure 1: Approved Changes to SSSF System Plan Map.

The project's aim is to review servicing needs by considering the updated standards and new flow trends.

The new approach has seen EWSI shift away from a 50+ year defined capital plan to an adaptive planning approach that is focused on monitoring flows, and adding storage capacity as needed to slow flows before they reach the treatment facilities. EWSI's new planning approach responds to analysis which shows significant reductions in observed and predicted sanitary flow generation.

SSSF Transformation Project

The SSSF Transformation Project was initiated by the SSSF Oversight Committee and is being administered by the City. The project will explore opportunities to align the SSSF financing structure with City Plan development growth patterns and EPCOR's new SanIRP planning approach. The project will ultimately identify a rate structure that meets updated funding and infrastructure planning approaches. To achieve these goals, the project will involve significant engagement with the development industry, including the Urban Development Institute - Edmonton Region and the Canadian Home Builders Association, the groups that are most impacted by these changes. EPCOR will also play a critical role in the project. To help administer this project, the City has hired an external consultant using SSSF funds, as agreed upon by the SSSF Oversight Committee. The project is expected to be completed by the end of Q1 2025.



1.2 Construction Projects

NEST - Stage NC2/NC3

NEST NC2/NC3 will connect the existing NC1 and NL1 trunk sections and will facilitate growth in north Edmonton.

The NEST NC2/NC3 tunnel was designed to facilitate growth in north Edmonton and improve the existing NEST system. The construction of NC2 & NC3 is a two-phase project. Phase 1 was completed in 2017. Phase 2 includes construction of a 2.6 km long, 2.34 m diameter tunnel parallel to 153rd Avenue, extending from Castle Downs Road to 88th Street. The purpose of these segments is to provide additional storage, improve conveyance and regulate flows in the existing system. Phase 2 was fully completed and put into service as of 2023. Auxiliary works remaining, including completion of an existing pump station’s decommissioning and carrying out surface restorations, are expected to be completed in 2024.

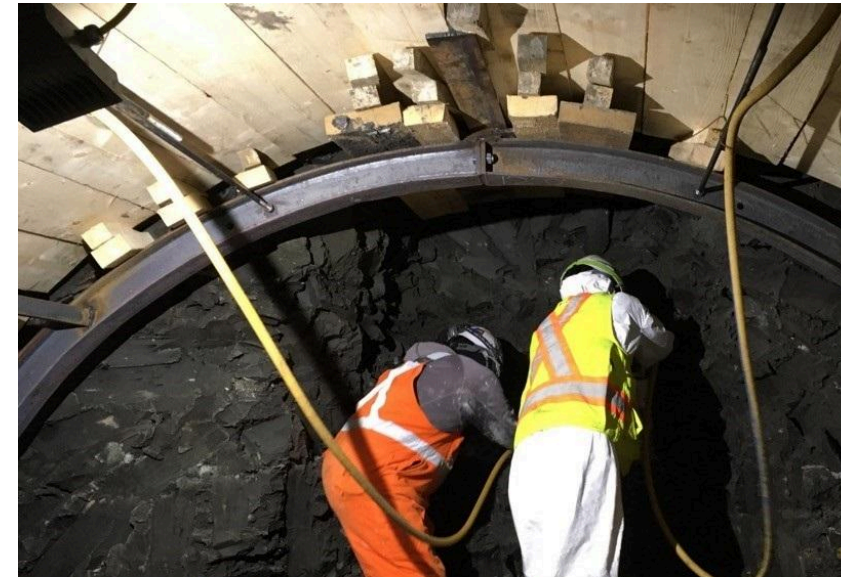


Figure 2a: NEST NC2/NC3, Undercut Excavation

SESS - Stage SW4

SESS SW4 will convey flows and provide wet weather storage for new development areas in south Edmonton.

SESS Stage SW4 involves construction of a 1550m long, 2.94 m diameter tunnel. The tunnel starts upstream of the existing SW3 segment at Ellerslie Road (southwest at Whitemud Creek) and extends west toward Windermere Boulevard (west of the Rabbit Hill Road interchange on Anthony Henday Drive). The primary objective of the trunk is to enhance conveyance and increase wet weather storage to accommodate the growth in south Edmonton. The original scope of the project was completed in 2021. However, a change request of \$1.42 million was approved in 2022 to connect the Ambleside pump station directly to the SW4 segment. This additional force main with drop structure (a vertical pipe that conveys flows down from the higher force main elevation to the lower elevation SW4 pipe in the connecting manhole) was completed in 2023.



Figure 2b: SESS SW4 Completed Tunnel with Liner

SESS SA10a provides sanitary storage and conveyance for south eastern industrial areas.

SESS - Stage SA10a with Pump Station and Force Main

SESS SA10a is located in southeast Edmonton along 34 Street between 68 Avenue to 76 Avenue. The project includes a 745m long, 3.05 m diameter sanitary trunk, a pump station and a sanitary force main. The project will provide sanitary storage and conveyance to facilitate new growth in Maple Ridge, Pylypow and Southeast Industrial areas. The tunnel boring work was completed in 2021; however, the completion of the tunnel was postponed due to a delay in the fiberglass liner caused by global supply chain issues. The tunnel was finished and put into service in 2022. Some outstanding landscaping and surface restoration work remains, which is expected to be completed by mid-2023.

The location of all the projects under construction are depicted in Figure 3. SSSF Major Sanitary Trunk Map.



Figure 2c: SESS SA10a, Retrieval Shaft

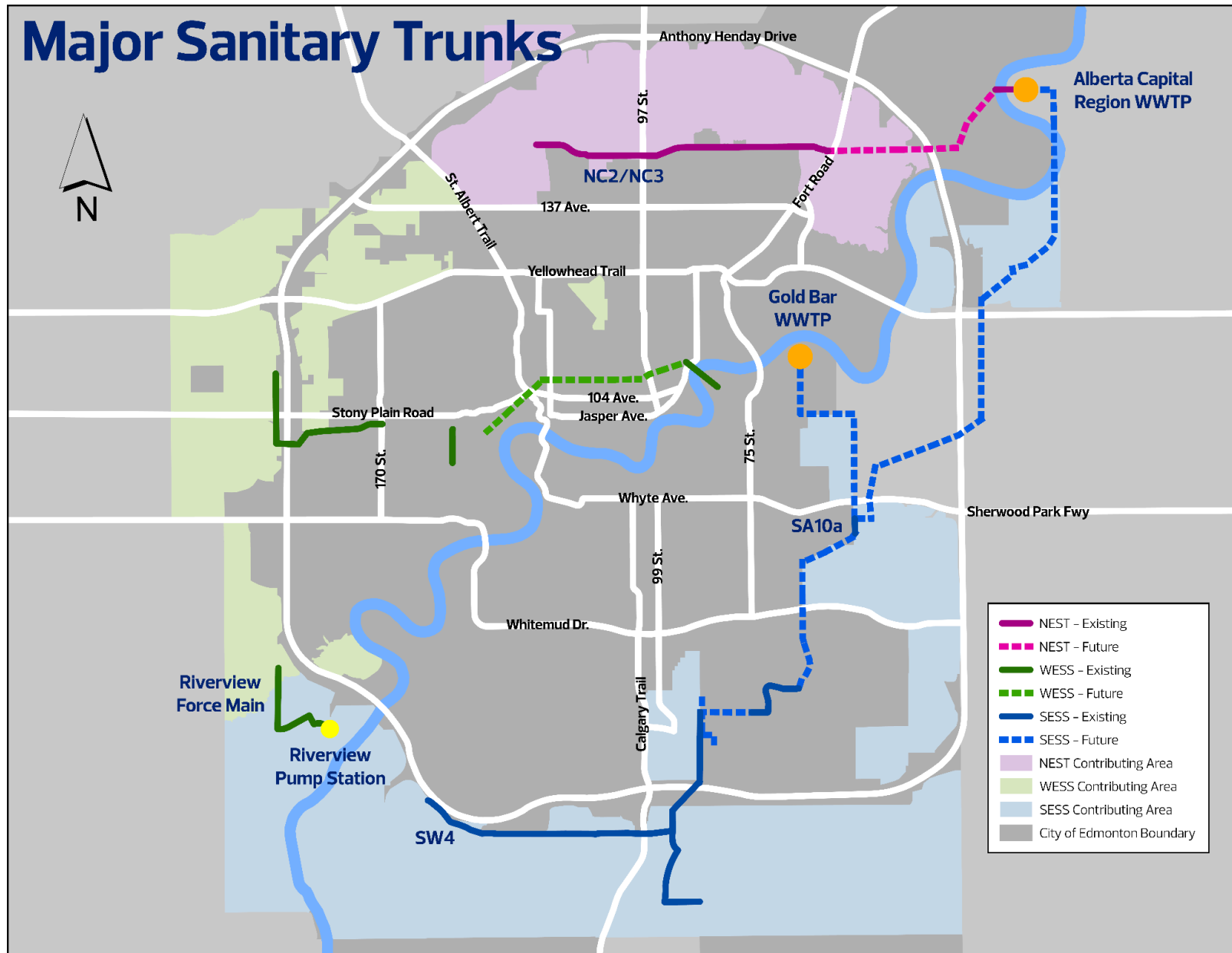


Figure 3: SSSF Major Sanitary Trunk Map (updated February 2023)

Notes:

1. Two potential alignments for the SESS system and associated waste water treatment plant destinations are indicated as directed by City Council in May 2021.
2. Some trunk segments are under review and may be removed pending technical analysis and Council approval.

2.0 SSSF Oversight and Sub-Committees

City Administration is authorized to manage and steward the SSSF program as delegated by City Council. The SSSF program is governed through a structure that consists of the SSSF Oversight Committee (OC) and two sub-committees as shown in Figure 4.

SSSF Oversight Committee

The Oversight Committee acts as a strategic decision-making body and ensures the appropriate management of the fund. In 2023 the Oversight Committee consisted of the following members:

Members	Role	Organization
Howaida Hassan (Chair)	Director, Urban Growth & Open Space	City of Edmonton
Sarah Wilmot	General Supervisor, Urban Growth	City of Edmonton
Bonnie Bryks	Finance Director, Financial & Corporate Services	City of Edmonton
Susan Ancel	Director, One Water Planning	EPCOR
Don Hawkes	Director, Project Management and Engineering	EPCOR
Mike Kohl	Representative Urban Development Institute (UDI)	UDI - Edmonton Region (ER)
David Kinders	Representative UDI	UDI - ER
Susan Keating	Representative UDI	UDI - ER
Mustapha Makhdoom*	SSSF Program Manager	City of Edmonton

*Joined December 2023

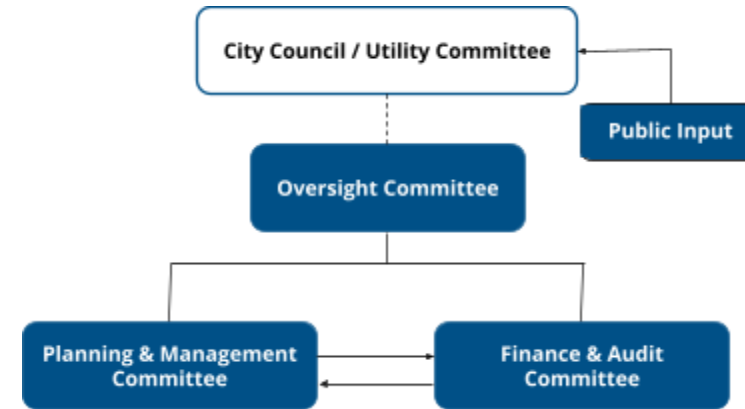


Figure 4: SSSF Governance Structure

The SSSF Oversight Committee had four virtual meetings in 2023. The following major decisions were made by the Oversight Committee:

- Approved the SSSF 2022 Annual Report.
- Approved the addition of the Edgemont Sanitary Pump Station to the SSSF program, and removed the requirement to construct SESS segments SW6 and SW7 in the Windermere neighbourhood.
- Approved the reimbursement of a portion of the PAC used for the Edgemont Pump Station.
- Approved the scope of work related to the SSSF Transformation project.
- Approved adjusting 2024 SSSF annual rates to equalize all EA rates by reducing WESS to be the same as NEST and SESS, which remain the same as they were in 2022 and 2023.
- The Sanitary Sewer Trunk Charge (SSTC) was deferred for the Crash Hotel and Coliseum Inn affordable housing conversion project, until the sites redevelop.

Planning & Management Committee

The purpose of this committee is to review technical and planning matters and provide recommendations to the Oversight Committee for decision. In 2023 the Planning & Management Committee was composed of following members:

Members	Role	Organization
Sarah Wilmot (Chair)	General Supervisor, Urban Growth	City of Edmonton
Jim Wood	General Supervisor, Development Coordination	City of Edmonton
Abhishek Bhargava	Senior Manager, Pipe Strategies	EPCOR
Don Hawkes	Director, Project Management and Engineering	EPCOR
Otto Hedges	Representative UDI	UDI - Edmonton Region (ER)
Ryan Thomas	Representative UDI	UDI - ER
Mustapha Makhdoom*	SSSF Program Manager	City of Edmonton

*Joined December 2023

Finance & Audit Committee

This committee acts in an advisory capacity and provides supervision and transparency to the financial management of the SSSF program. The Finance & Audit Committee is composed of the following members:

Members	Role	Organization
Mike Kohl (Chair)	Representative UDI	UDI - Edmonton Region (ER)
Bonnie Bryks	Finance Director, Financial & Corporate Services	City of Edmonton
Yisun Hong	Finance Manager, Financial & Corporate Services	City of Edmonton
Paul Gauthier	Senior Manager, Capital Drainage Services	EPCOR
Don Hawkes	Director, Project Management and Engineering	EPCOR
Mustapha Makhdoom*	SSSF Program Manager	City of Edmonton

*Joined December 2023

3.0 Three-Year Construction Plan

Table 1 summarizes the proposed SSSF construction projects for the next three years (2024-2026). It is important to note that, other than the Riverview pump station and force main, no major SSSF construction is expected for the duration of the 3 year outlook.

The proposed projects support development throughout Edmonton in a cost effective manner based on the city's population and employment projections, as well as input from the development industry. The locations of the construction projects are shown in Figure 3.

Table 1 - SSSF 3 Year Construction Plan

Project	Start Date	Anticipated Completion Date	Budget (Million)
SESS Stage SW4	2015	2023	\$35.83
SESS Stage SA10a	2017	2022	\$42.60
NEST Stage NC2 & NC3 - Phase 2	2017	2022	\$50.04
Riverview Pump Station & Force Main System	2024	2027	\$26.00

4.0 Fund Balance

The SSSF is currently in good financial health and anticipated to fulfill its long-term objectives.

At the end of 2023, the SSSF balance was \$103.42 million, which is a significant increase compared to the balance at the end of 2022. The majority of the increase is due to reduced expenditures, realization of revenue from fees that were levied in previous years, and a significantly higher than budgeted interest rate. Program expenses were \$0.3 million higher than the budget of \$2.46 million, primarily due to the additional scope of the SESS SW4 segment as explained in Section 1.2. The revenues were \$5.89 million higher than the original forecast of \$29.67 million, primarily due to \$7.5M of Expansion Assessment fees that were deposited in 2023 carried over from the previous year. The fund had a net positive cash flow of \$32.80 million, which was deposited into the reserve account. The original forecast was for a net positive cash flow of \$27.21 million.

EPCOR's ongoing planning project, SanIRP, is anticipated to reduce infrastructure needs, which would result in an increasing fund balance..

The SSSF program is based on a reserve model with a mandate to maintain a positive balance (i.e. funds are collected in advance of construction). EPCOR is currently reviewing the infrastructure requirements, timelines, and cost estimates through the SanIRP project as discussed in Section 1.1. The results are expected to lead to the elimination or delay of some segments. Therefore, if no changes are made, the fund balance is expected to grow significantly in the short term. The SSSF Transformation project is also looking at the SSSF Program holistically, which may impact the funding model and reserve fund. Discussions regarding the future funding model are ongoing.



4.1 Statement of Fund Activities & Balance

The Statement of Fund Activities and Balance for 2023 is shown in Table 2. In addition, Figure 5 shows each revenue component as a percentage of the total 2023 revenue. Figure 6 depicts the historical SSSF revenue breakdown, and Figure 7 shows the historical SSSF revenue and expenditures. Note that Figure 6 includes Interest, Internal Recovery, and Utility Contribution under “Other.”

Table 2 – Statement of Fund Activities and Balance (ending December 2023)

Description	2022 Actual	2023 Actual	2023 Forecast	2023 Variance
Revenue (\$)				
Sanitary Sewer Trunk Charges (SSTC)				
• Single/Duplex Revenue	10,065,517	8,153,263	11,513,458	(3,360,195)
• Multi Family Revenue	3,928,179	6,850,586	4,938,218	1,912,368
• Commercial/Industrial/Institutional Revenue	1,707,628	1,162,436	1,656,466	(494,030)
Expansion Assessment	4,306,014	12,792,182	6,217,433	6,574,749
Sanitary Utility Contribution	1,300,000	1,300,000	1,300,000	0
Interest	1,405,661	4,459,431	4,046,284	413,147
Internal Recovery	0	94,029	0	94,029
Other Revenue	0	750,000	0	750,000
Total Revenue (\$)	22,712,999	35,561,927	29,671,858	5,890,069
EXPENDITURES (\$)				
NEST NC2 & NC3	3,035,246	333,417	573,919	(240,502)
SESS SA10A	3,867,829	45,840	324,623	(278,783)
SESS SW4	977,060	2,373,953	1,560,492	813,461
SW1 PS Upgrade	227,728	2,433	0	2,433
Others	0	3,750	3,750	0
Total Expenditures (\$)	8,107,863	2,759,393	2,459,034	300,359
Opening Balance	56,009,243	70,614,380	70,614,380	0
Excess/(Deficit) of Revenues over Expenditures	14,605,136	32,802,533	27,212,824	5,589,709
Ending Balance (\$)	70,614,379	103,416,913	97,827,204	5,589,709

REVENUE

Total revenue for 2023 was \$35,561,927 compared to \$22,712,999 collected in 2022.

*Total Revenue-
\$35.56M*

- *SSTC Revenue-
\$16.17M*
- *EA Revenue-
\$12.79M*
- *Utility Revenue-
\$1.30M*
- *Interest -
\$4.46M*
- *Other Total -
\$0.84M*

- **Sanitary Sewer Trunk Charge (SSTC)** – In 2023, SSTC revenues amounted to \$16.17 million, with approximately 73% of that amount assessed from the developing area, and 27% from the redeveloping area of the city. The 2023 SSTC revenue was \$0.46 million higher than the \$15.70 million SSTC revenue collected in 2022.

 Single-family/duplex developments contributed \$8.15 million in 2023 which is \$1.91 million lower than 2022. Multi-family residential developments contributed \$6.85 million, which is \$2.92 million more than in 2022. Approximately 62% of multi-family development revenue was collected from developing area developments, with about 38% collected from redeveloping area developments. The remaining SSTC revenue, \$1.16 million, was collected from commercial, industrial, and institutional development, which is \$0.55 million lower than in 2022.
- **Expansion Assessment (EA)** - For 2023, the total EA collected was \$12.79 million, which is \$8.49 million higher than the amount collected in 2022.
- **Utility Contribution** – The Utility Contribution in 2023 was \$1.30 million, consistent with previous years, with 2023 being the final year that a utility contribution will be made.
- **Interest Earned** – Total interest earned during 2023 was \$4.46 million, which is \$3.05 million higher than the amount collected in 2022. This large increase in the rate of return is due to the

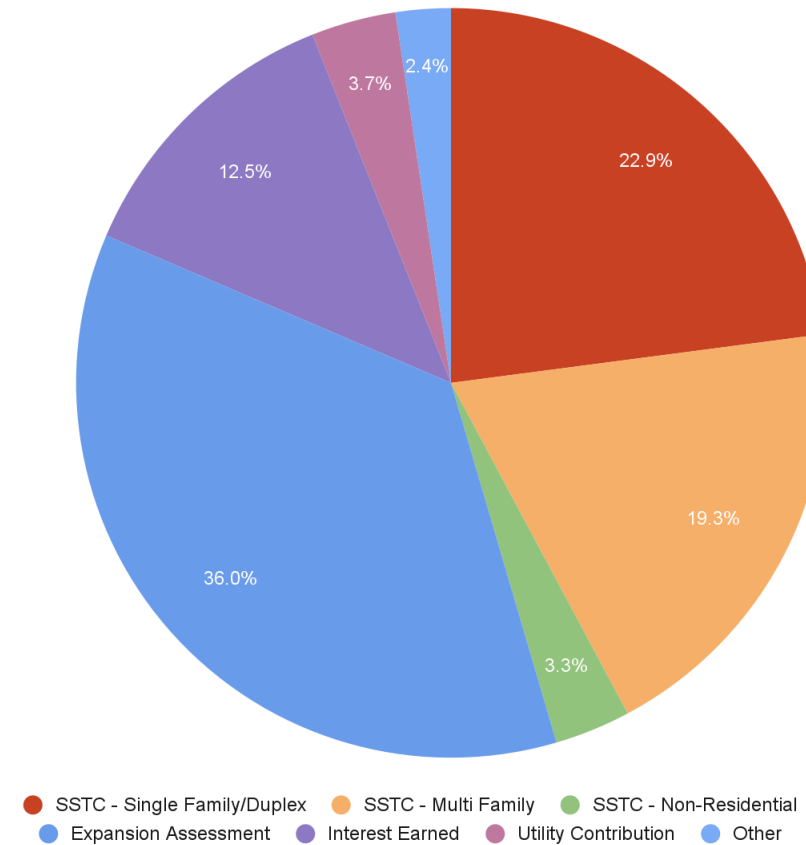


Figure 5: SSSF 2023 Revenue Breakdown

significantly higher interest rate over the last year, changing from 2.038% in 2022 to 3.80% in 2023.

- **Other Revenue** - Includes miscellaneous revenue including 1) a settlement of \$0.75 million for repair costs for WESS1, incurred by damage from a sinkhole that developed under part of the line in 2010, and; 2) \$0.09 million SSTC collected from City of Edmonton projects (classified as “Internal Recovery” by the City’s Finance department). In 2023, this SSTC came from the Holyrood Supportive Housing (\$69K) and Lewis Farm Community Recreation Centre library (\$16K) capital projects.

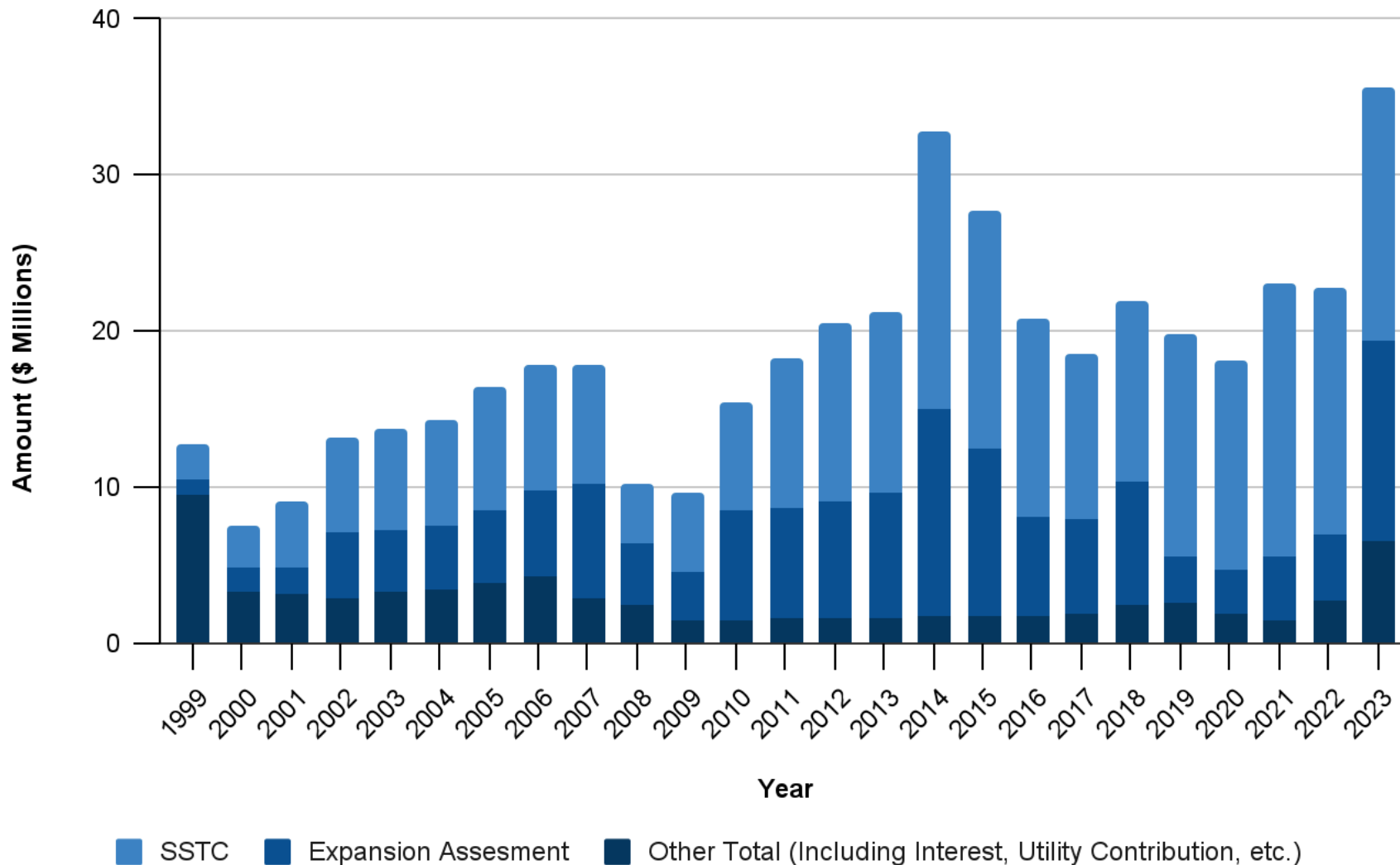


Figure 6: SSSF Historical Revenue Breakdown

EXPENDITURES

In 2023, the largest expenditure was incurred for the construction of SESS SW4 (\$2.37 million), followed by \$0.33 million for the construction of NEST NC2 & NC3. The remaining expenses were mainly related to SESS SA10A. As of December 2023, the major projects that have been ongoing for the past several years, including SESS SW4, NEST NC2 & NC3, and SESS SA10A, have been completed. Furthermore, a new project, Riverview pump station and forcemain, is scheduled to commence design in 2024. Construction costs are not yet known, but construction is expected to be finished in 2025. The projected annual revenue is expected to cover the cost, and as a result, the balance will remain positive for the next three years. The complete expenditure projection can be found in Table 5.

Figure 7 displays the yearly revenue and expenditures of the fund since its inception. Notably, 2022 marks the first year since 2017 in which expenditures were below the revenue level. This is largely attributed to the removal of SW5, SW6, and SW7, and EPCOR's ongoing review of sanitary servicing needs as described in Section 1.1.

2023 shows a continuation of this difference in a significant manner. As capital projects wrap up with no additional major projects planned, outside of the Riverview servicing work, further review of the funds will occur under the SSSF Transformation project.

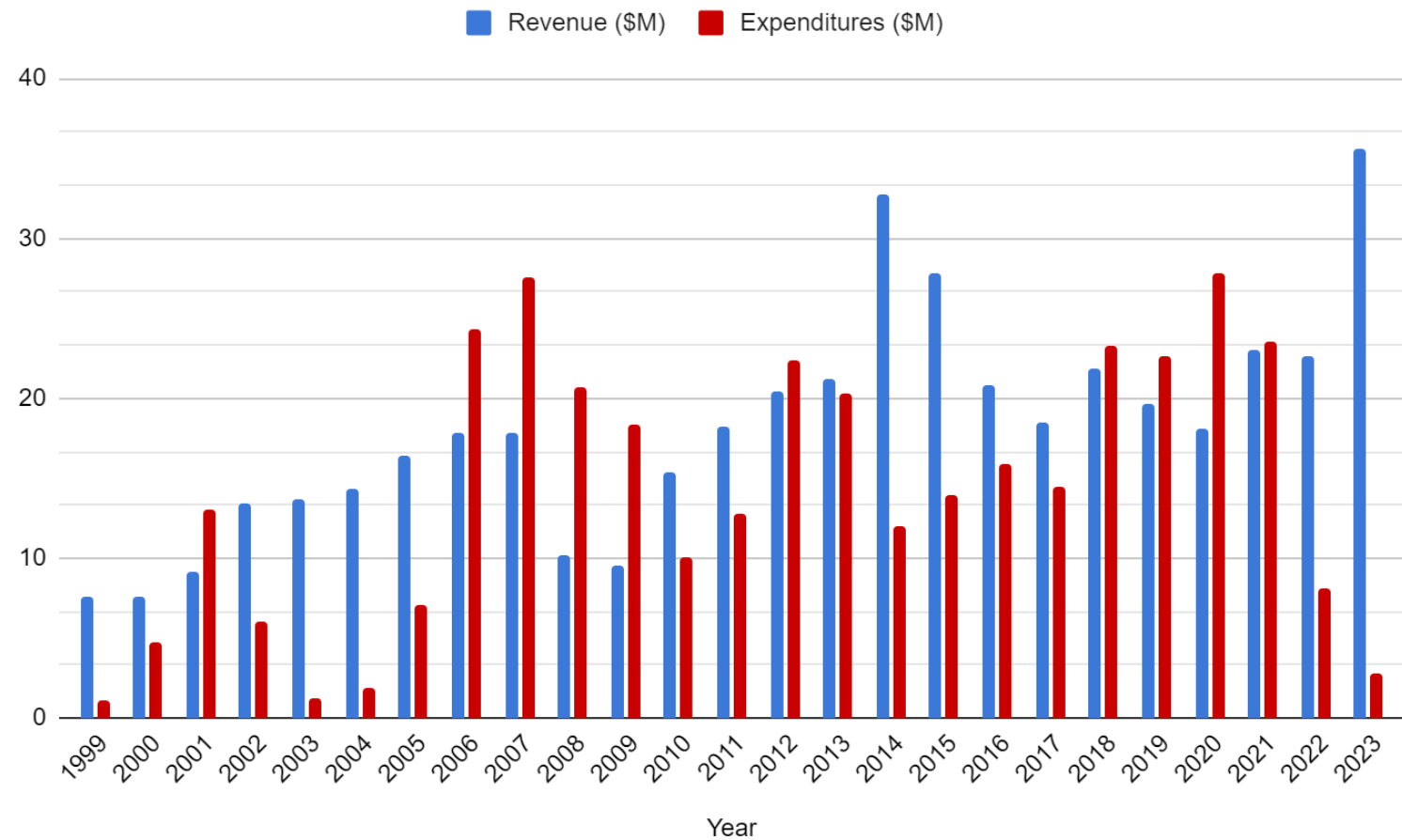
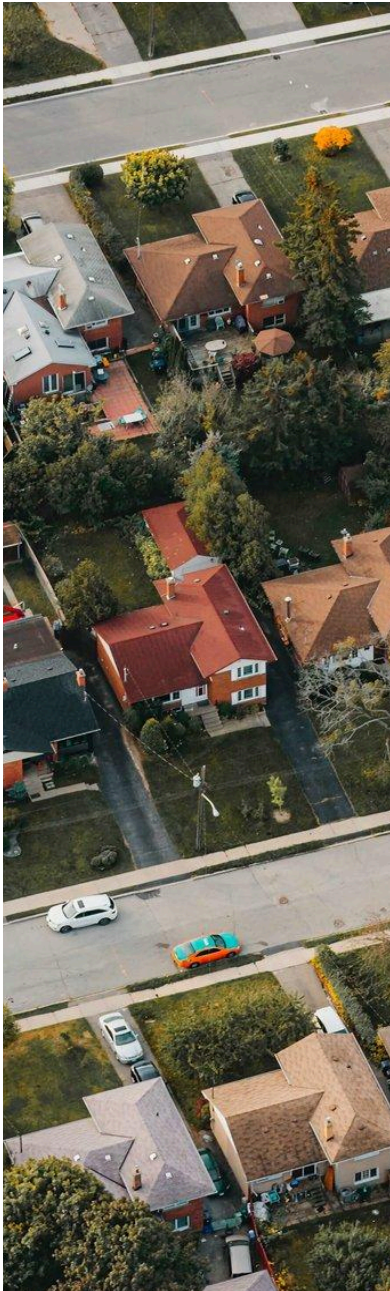


Figure 7: SSSF Historical Revenue and Expenditures



4.2 Three-Year Cash Flow Projection

Table 5 shows the three-year revenue and expenditure (2024-2026) projections for the SSSF fund based on the current cash flow model.

Revenues

Balance for 2023 - The SSSF closing reserve balance as of December 31, 2023 was \$103.42 million.

Revenues and Expenditures for 2023 - These are based on actual values recorded.

Interest (2024 - 2026) - The interest rate was projected at 4.34%, 3.45%, and 3.06% in 2024, 2025, and 2026 respectively.

Utility Contribution - This amount represents contributions from EPCOR for diversion of sanitary flows from the existing areas to the new trunk system constructed under the SSSF. Based on lot count results conducted in 2000 for these areas, the City would make annual contributions of \$2.60 million to the SSSF until 2014. In March 2006, City Council approved to change the Utility Contribution amount to \$1.30 million commencing on January 1, 2007 with the last payment to be made in 2023. EPCOR made these contributions after the transfer of Drainage Services from the City in 2017. These contributions concluded at the end of 2023 per the current assessment, with no further contributions intended.

Sanitary Sewer Trunk Charge (SSTC) - These charges are collected when an application is made for a development permit or sanitary service connection. This charge applies to all new development and redevelopment in the city, and is payable by builders and is assessed at time of development or building permit. It is recommended that there be no increase in SSTC rates from 2023 to 2024. The SSTC rates for 2023 and 2024 are shown in Table 3.

Expansion Assessment (EA) - This charge is an area-based assessment, assessed at the time of subdivision from developers. The EA applies to areas of the city that did not have an approved Neighborhood Structure Plan (NSP) before January 1, 1999. The 2023 actual and 2024 recommended rates are shown in Table 4.

Table 3 - SSTC Rates

Type of Development	2023 Rates	Recommended 2024 Rates ¹
Single-family/Duplex Residential	\$1,764/dwelling	\$1,764/dwelling
Secondary, garage & garden suite	\$781/dwelling	\$781/dwelling
Multi-family residential	\$1,259/dwelling	\$1,259/dwelling
Commercial, Industrial & Institutional	\$8,818/ha	\$8,818/ha

Table 4 - EA Rates

Contributing Areas	2023 Rates	2024 Rates ¹
North Edmonton Sanitary Trunk (NEST)	\$25,186/ha	\$25,186/ha
South Edmonton Sanitary Trunk (SESS)	\$25,186/ha	\$25,186/ha
West Edmonton Sanitary Sewer (WESS)	\$31,486/ha	\$25,186/ha

1. These rates were agreed upon for 2024 in 2023. However, in May 2024, the SSSF Oversight Committee agreed to pause charges starting June 2024. The information shown here reflects the SSSF program in 2023. The 2024 SSSF Annual Report will further describe the decision to pause charges.

Expenditures

Estimated Construction Costs – Estimates for 2024 to 2026 were based on the updated segment costs provided as a result of recent planning studies and 2% inflation rate.

Table 5 - Three-Year Revenue and Expenditure Projection

	2023 (Actual)	2024 ^{1,2,3}	2025	2026
Opening Balance	70.61	103.42	127.52	142.29
Total Revenues	35.56	28.97	29.81	30.73
Total Expenditures	2.76	4.79	15.10	4.10
Closing Reserve Balance	\$103.42	\$127.58	\$142.29	\$168.92

	Total 2024 - 2026	2024	2025	2026
Planning Studies	0.32	0.12	0.10	0.10
Edgemont Over Expenditure ⁴	4.67	4.67	-	-
Riverview Pump Station & Force Main System	19.00	0.00	15.00	4.00
Total	\$24.35	\$4.79	\$15.10	\$4.10

All values are in millions of dollars

- 1. The estimated costs shown in Table 5 are based on preliminary information provided by EPCOR (2024). The cost and the schedule are subject to change based upon an updated plan.*
- 2. The revenue and expenditure forecasts are limited to a three year period due to uncertainties related to the ongoing SSSF Transformation project. The results of the project may significantly impact the rate structure and projected expenditures, as discussed in Section 1.1.*
- 3. The 2024 forecasted revenues are based on 2023 projections and assumptions. As of June 2024, rate collection has been paused. The 2024 annual report will reflect this pause.*
- 4. A one-time partial reimbursement to developers who paid for the Edgemont Pump Station using a Permanent Area Contribution structure. The pump station is now part of the SSSF system.*

For more information, visit our website:

www.edmonton.ca/sssf

Inquiries may also be directed via email at:

sssf@edmonton.ca

Or by mail to:

The City of Edmonton
Edmonton Tower
700, 10111-104 Avenue NW
Edmonton, AB
T5J 0J4