



## Safe Access

Alberta's [Occupational Health and Safety \(OH&S\)](#) Act, Regulation and Code set minimum health, safety and wellness standards in Alberta's workplaces. This includes requirements for entrances, walkways, stairs and ladders. To avoid injury and near misses, our inspectors will only access sites with safe access. Below are examples of acceptable and unacceptable access.

### Acceptable



### Unacceptable





**Acceptable**



**Unacceptable**





Acceptable



Unacceptable



3 point contact is provided





**Acceptable**

**Unacceptable**

Intentionally left blank



No guard, no 3 point contact

Intentionally left blank



No Guard

**Acceptable**

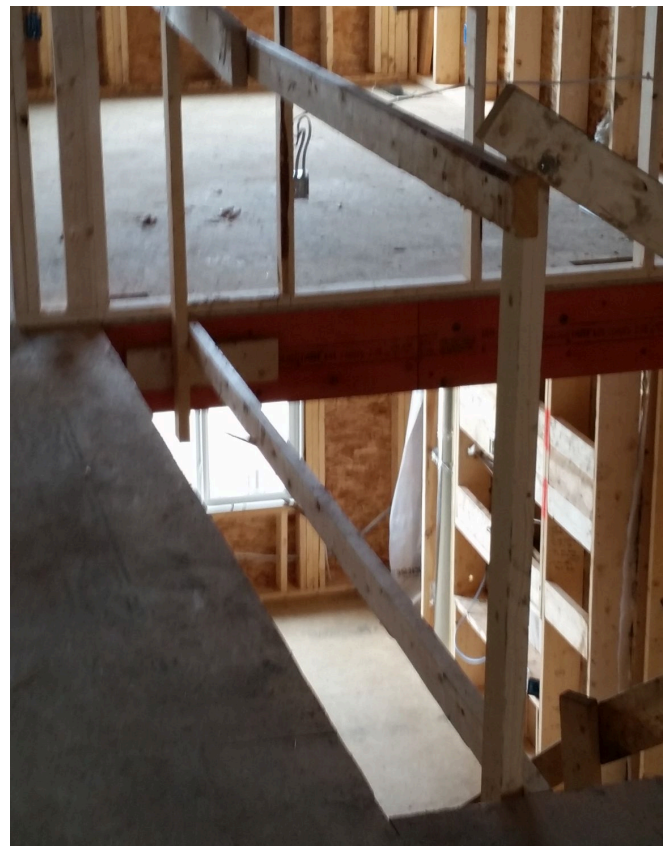
**Unacceptable**

Intentionally left blank



Not a solid guard

Intentionally left blank

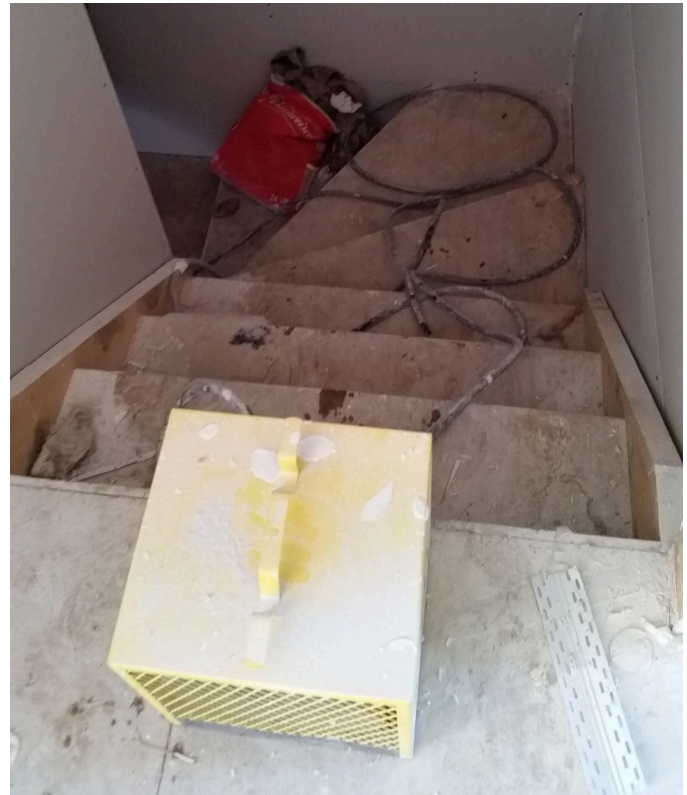




**Acceptable**

Intentionally left blank

**Unacceptable**



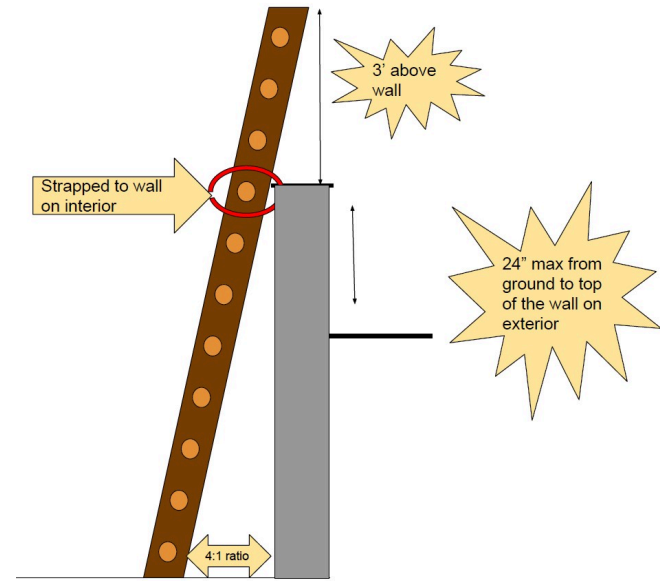
Debris and equipment obstructing access



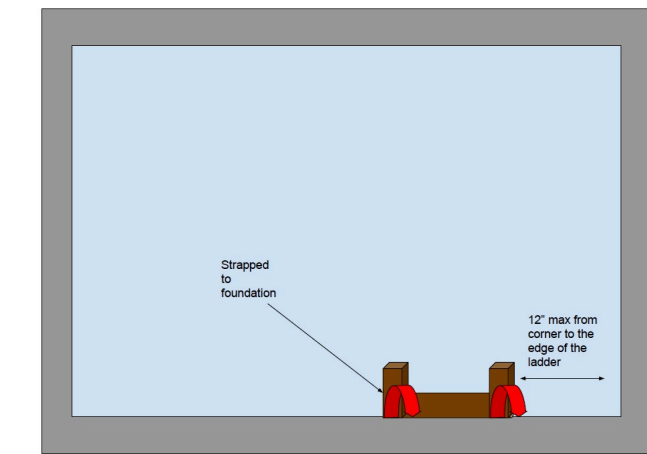
Intentionally left blank

**Acceptable**

**Unacceptable**



Intentionally left blank



Intentionally left blank