

# Building Great Neighbourhoods

## Rossdale Neighbourhood Renewal

Edmonton

February 2025

### Help shape the future of Rossdale!

What opportunities should the City explore? Walking, rolling and biking connections? Traffic calming? Let us know!

Through the Neighbourhood Renewal Program, roads and sidewalks in mature neighbourhoods are renewed and rebuilt. These changes allow the Project Team to explore other improvements, including bike connections and measures to slow traffic. Planning for renewal in Rossdale, including public engagement with community members and other interested parties, is about to get underway.

#### To learn more and share your feedback:

##### Complete the online survey

Available from Tuesday, March 4 to Sunday, March 23

##### Meet the Project Team

Visiting door to door

Evenings from March 10 to 14

*If we did not see you at your door, we will leave a door hanger with contact information.*



Scan to reach survey

Please visit our website at [edmonton.ca/BuildingRossdale](https://edmonton.ca/BuildingRossdale) for more information and to sign up for project updates.

#### No online access?

No problem! If you do not have internet access to complete the survey or if you prefer to engage in a different manner, the Rossdale Project Team is available to schedule one-on-one phone calls with interested participants to share information, answer questions and gather input. A paper copy of the survey can also be provided. Email [amanda.kros@edmonton.ca](mailto:amanda.kros@edmonton.ca) or call 780-818-8314. Please request paper surveys by March 7 so we can deliver them while going door to door.

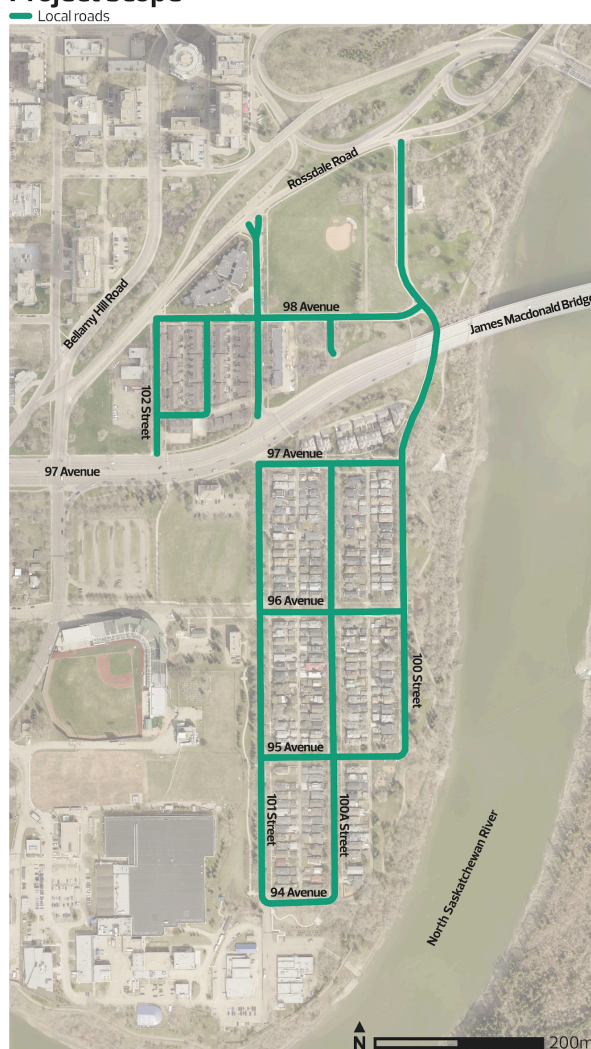
### Working together to make the most of your neighbourhood

## What you might notice in Rossdale

Activities to prepare for the planning and design phase of Neighbourhood Renewal include:

- Lidar 3D imaging - In fall 2023, you may have seen a Nektar 3D truck in the neighbourhood picking up information about road widths, curb locations, boulevard tree locations and sidewalk details. You may have also noticed markings on the roads at intersections - some look like a large V - which are used to support the imaging
- Preliminary survey - In 2024, City of Edmonton survey crews collected existing elevation and location data to support design
- Utility location - Paint markings will start appearing on the roads and flags of different colours will be placed showing the location of underground utilities. During this time, you will see the following vehicles: EPCOR, Telus, Rogers, Promark and WSP
- Pavement testing - Tetra Tech will be onsite this spring to collect pavement and subgrade strength properties. The truck/equipment stops every 25 metres, applies a weight to the pavement and records the deflection of the pavement. Each test takes about five minutes
- Pavement drilling - You may see “no parking” signs installed at select locations the day before drilling/coring. The closure will be for a single lane only and about 20 metres long to accommodate a mobile auger drill rig and a WSP truck. The closure may take about 45 minutes for each location. Please stay away from the drill rig for your safety

## Project scope



This is your city and your neighbourhood. We want to understand how you experience your neighbourhood and ask for your input on what we might do to make it better. We will engage and work with you on the renewal of roads and sidewalks and promote other community opportunities to enhance how people live and interact in Rossdale.

We commit to being open and transparent about how your input is used.

### For more information, please contact:

Amanda Kros

[amanda.kros@edmonton.ca](mailto:amanda.kros@edmonton.ca)

780-818-8314