

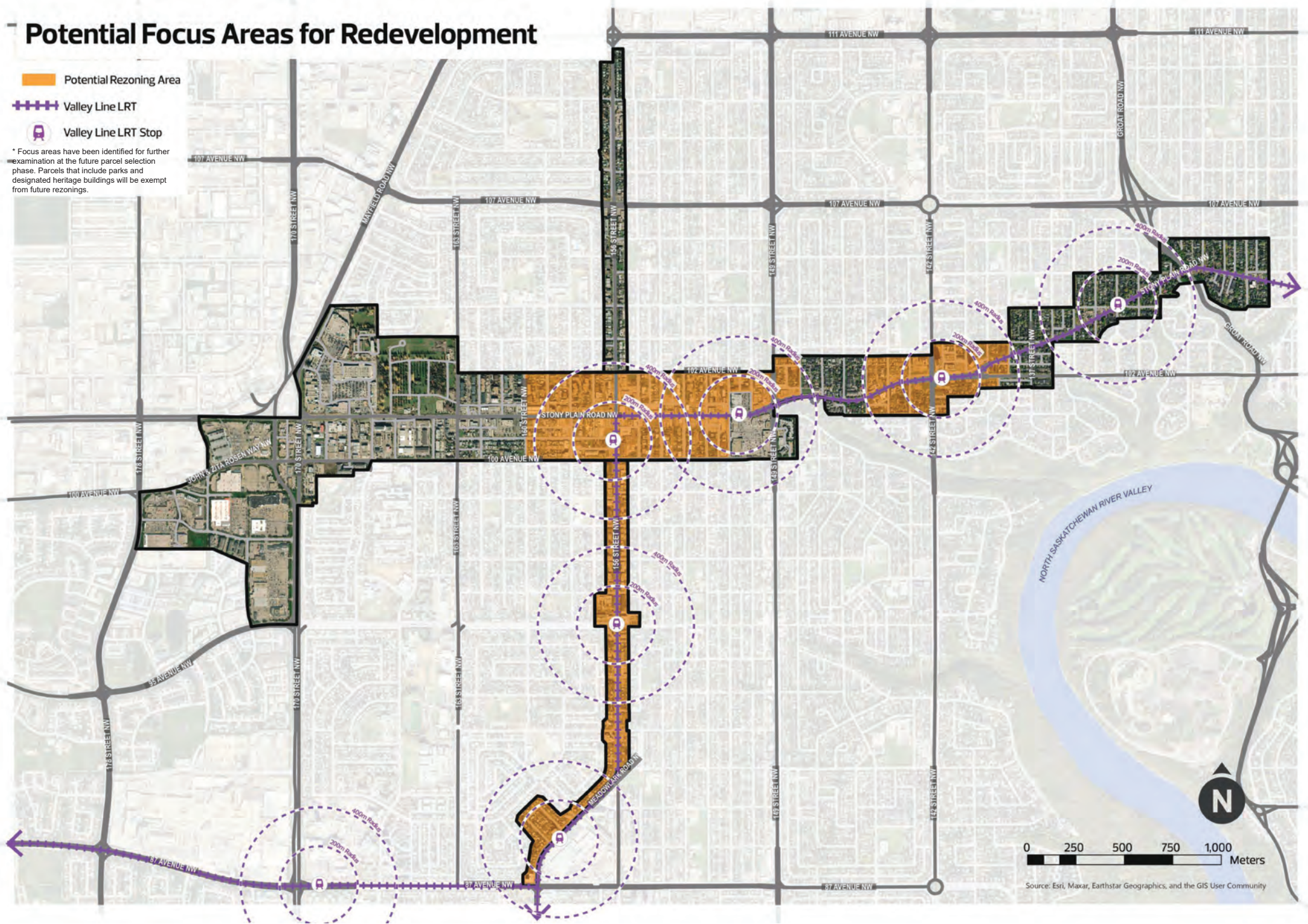
# Potential Focus Areas for Redevelopment

Orange shaded area: Potential Rezoning Area

Purple dashed line: Valley Line LRT

Purple circle with 'R': Valley Line LRT Stop

\* Focus areas have been identified for further examination at the future parcel selection phase. Parcels that include parks and designated heritage buildings will be exempt from future rezonings.



# Potential Height in the District Plan Policy

Valley Line LRT

Valley Line LRT Stop

**Potential Height**

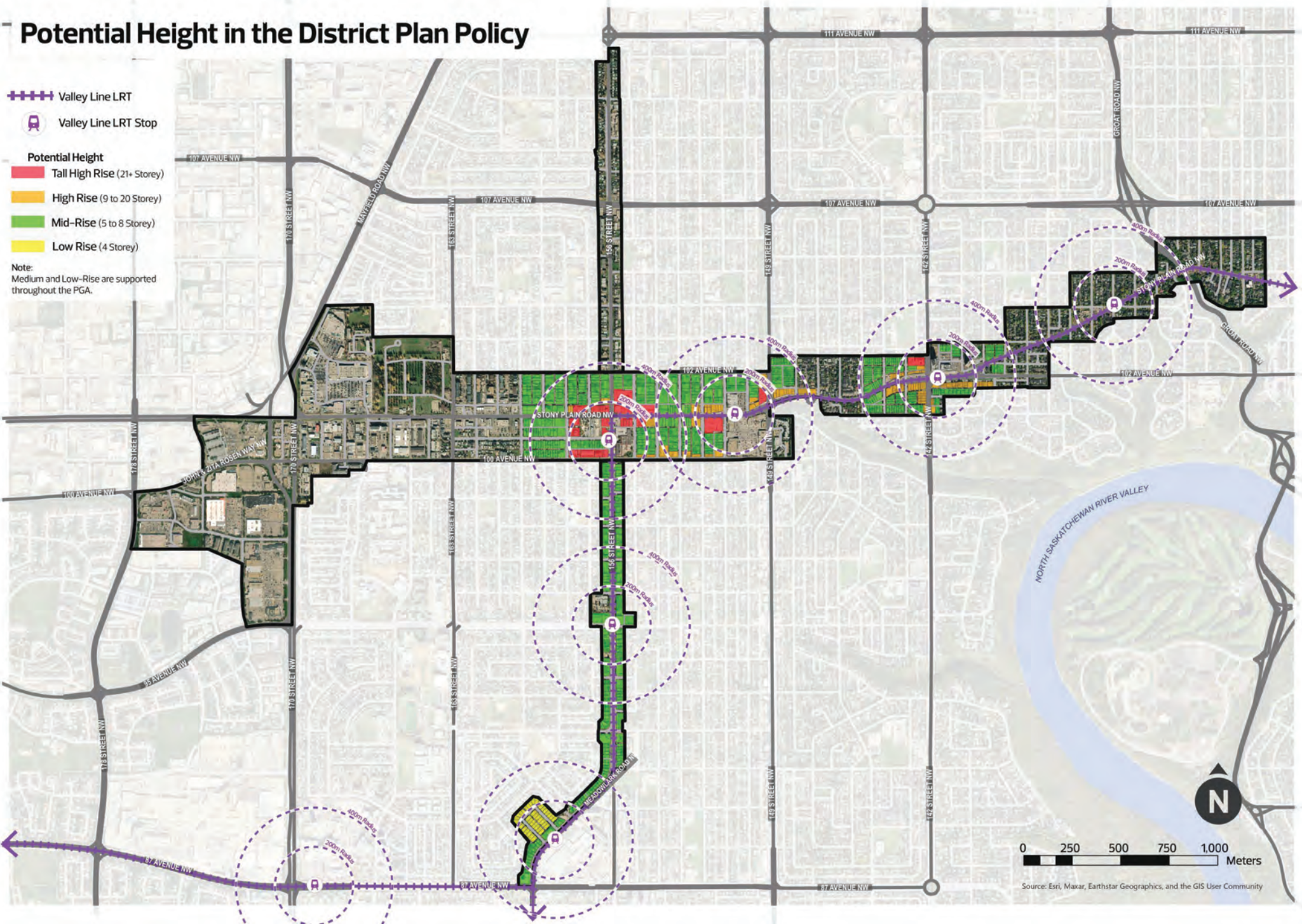
Tall High Rise (21+ Storey)

High Rise (9 to 20 Storey)

Mid-Rise (5 to 8 Storey)

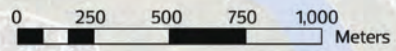
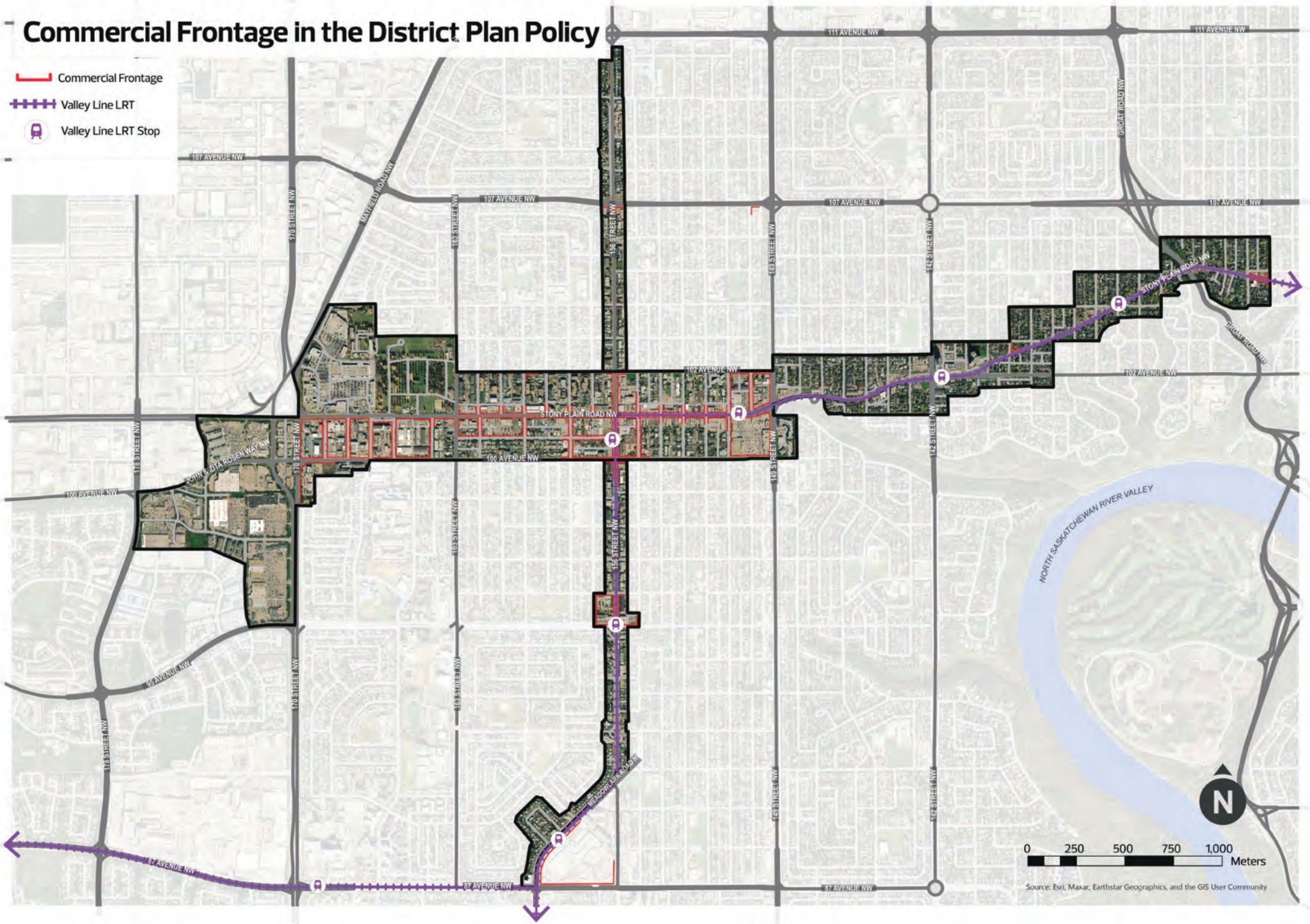
Low Rise (4 Storey)

**Note:**  
Medium and Low-Rise are supported throughout the PGA.



# Commercial Frontage in the District Plan Policy

-  Commercial Frontage
-  Valley Line LRT
-  Valley Line LRT Stop



Source: Esri, Maxar, Earthstar Geographics, and the GIS User Community