

What We Heard Report: Overlanders and Homesteader Neighbourhood Renewal

Community Feedback on Draft Design
November – December 2023

| **SHARE** YOUR VOICE
SHAPE OUR CITY

Edmonton

REFINE

Table of Contents

| | |
|---|----|
| Project overview | 3 |
| Where we are in the decision making process | 4 |
| Public Engagement Spectrum | 5 |
| How decisions are made | 5 |
| What we did and how we did it | 6 |
| Overlanders and Homesteader Vision and Guiding Principles | 7 |
| What we heard | 8 |
| Walking, rolling and biking | 8 |
| Traffic movement and safety improvements | 11 |
| Places and placemaking | 20 |
| Next steps | 24 |

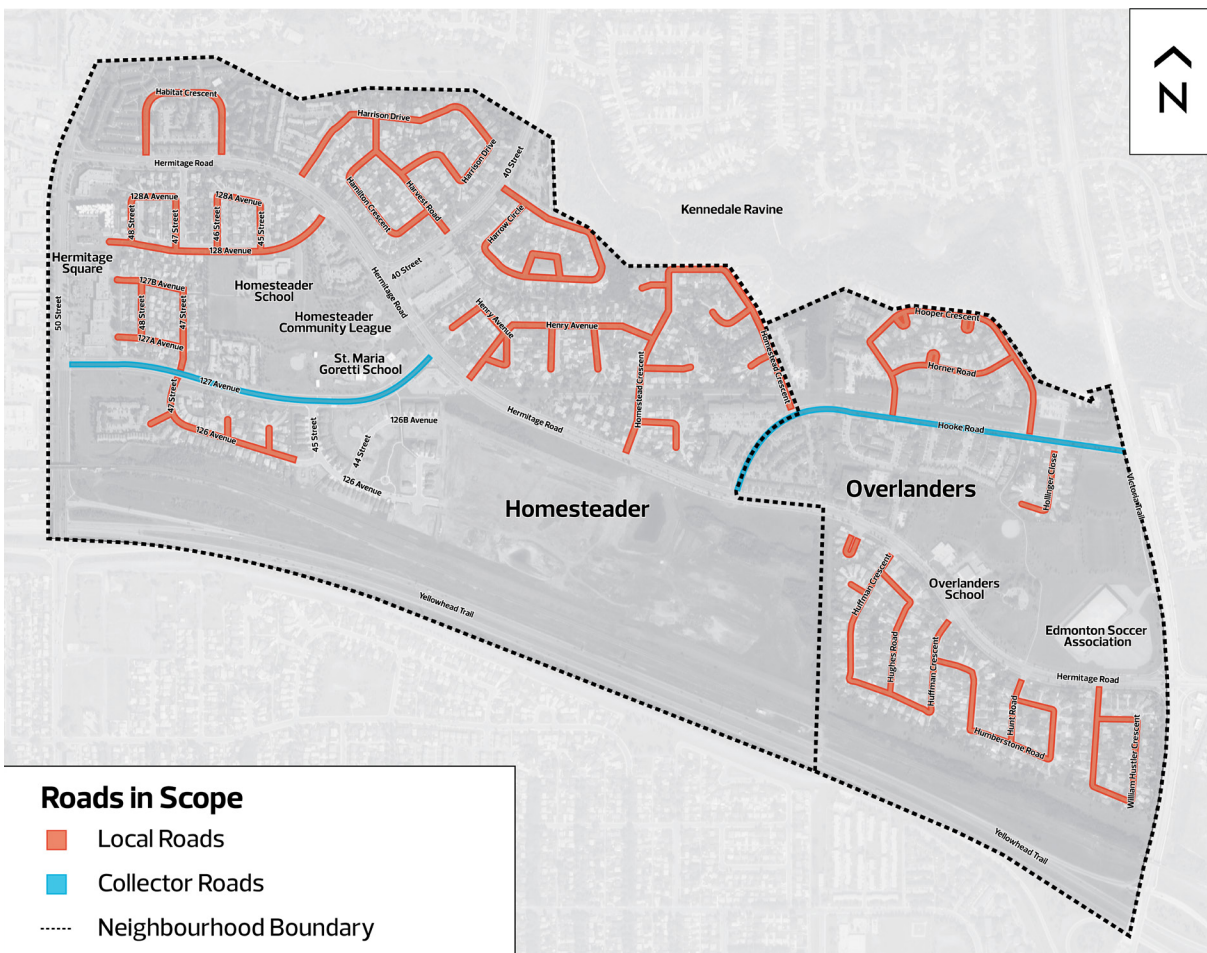


Project overview

Neighbourhood Renewal in Overlanders and Homesteader is anticipated to begin in spring 2025. Through the City of Edmonton's Neighbourhood Renewal program, we will rehabilitate roads, replace street lights, curbs and gutters, repair sidewalks and connect missing sidewalk links where possible.

Cost-sharing opportunities will be made available through the Local Improvement process for sidewalk reconstruction and decorative street light upgrades in the neighbourhoods. Other opportunities to improve City-owned parks and public spaces will also be explored.

Overlanders and Homesteader project scope map



Where we are in the decision making process

The Neighbourhood Renewal program follows the road map shown below. Following each stage of engagement, the Project Team will share with you how your input will help inform the decisions being made.

This report highlights what we heard during the **Community Feedback on Draft Design** stage between November and December 2023.

Neighbourhood Renewal Road Map



LEGEND



Public Engagement Spectrum

The City of Edmonton seeks input from residents to help guide the project. The City's Public Engagement Spectrum, shown below, shows the four levels of influence that the public can have on decisions made by the City throughout the project.

In this stage of engagement, the public was invited to provide input that would help:

- + **REFINE** the Project Team's draft design for Overlanders and Homesteader Neighbourhood Renewal

We commit to telling you how public input influences decisions according to the Public Engagement Spectrum.

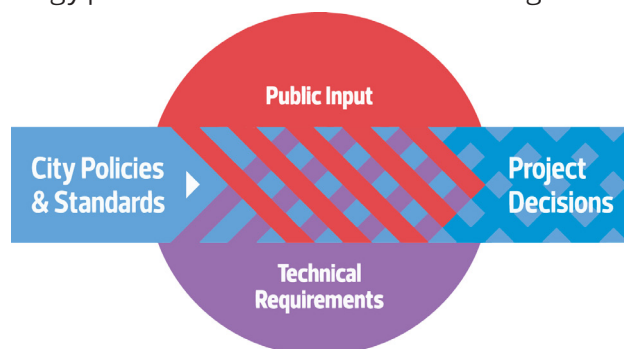
Public Engagement Spectrum



How decisions are made

The Project Team makes decisions using a combination of policy and program information, public engagement input and technical requirements. This process helps to ensure that the decisions we make are fiscally responsible, follow best practices, consider the existing infrastructure, land uses and activities in the neighbourhoods and result in the best outcomes for our city.

City policies and programs such as the Complete Streets Design and Construction Standards, Safe Mobility Strategy and Winter City Strategy provide the overall direction for Neighbourhood Renewal designs. As each neighbourhood is unique, the Project Team asks for input from residents who live, work and play in the neighbourhood and considers technical aspects, such as roadway widths and conflicts with utilities and trees, to determine what will fit in the neighbourhood.



What we did and how we did it

From November 22 to December 13, 2023, the Project Team engaged with Overlanders and Homesteader residents in the following ways:

Drop-in community event



- + Residents were invited to attend a drop-in community event hosted on November 29, 2023, at St. Maria Goretti School
- + Participants had the opportunity to see the draft designs proposed for the Overlanders and Homesteader neighbourhoods, ask questions and provide feedback

Over 70 participants

Community feedback on draft design survey



- + An online survey was available to the public from November 22 to December 13, 2023, asking participants who live, work and play in Overlanders and Homesteader to **REFINE** our draft design for Neighbourhood Renewal

90 survey responses

How we communicated



- + Three road signs
- + 20 yard signs
- + 4,064 newsletters delivered
- + 4,064 postcards delivered
- + One email to 131 list subscribers
- + 1,589 unique views on the project web page
- + 96,267 social media ad views



Overlanders and Homesteader Vision and Guiding Principles

In previous stages of engagement, we worked with the community to **CREATE** a neighbourhood Vision Statement and a set of Guiding Principles. This Vision is used to guide decision making for Neighbourhood Renewal. The Guiding Principles are ideas that inform how the Vision is applied to the neighbourhood design.

During the **Community Feedback on Draft Design** stage, we asked participants to reflect on how well the draft designs reflect the Vision and Guiding Principles.

Vision

We are the welcoming, family-friendly and active communities of Overlanders and Homesteader.

Our neighbourhoods value diverse, inclusive and intergenerational connections. Our residents are well connected to parks, the Kennedale Ravine, schools, commercial services and beyond.

Guiding Principles

Community Identity



Embrace our connection to Kennedale Ravine and the social and cultural character of the neighbourhood through design elements that embrace its identity and history.

Active and Engaged Lifestyles



Encourage healthy, living and wellbeing by building outdoor spaces that encourage physical activity, social interaction and community spirit for people of all ages and abilities.

Connections Between Neighbours



Encourage diverse and inclusive community interactions and social connections through designed outdoor spaces that invite informal gatherings, cultural events, and shared neighbourhood activities.

Design with Nature



Enhance the health and wellbeing of the community by incorporating nature and trees into the design.

Streets for People



Design streets, sidewalks, and trails to prioritize safety and comfort for people of all ages and abilities. Connect parks, schools, and commercial areas with enjoyable and efficient routes in all seasons.

Engaging Commercial Areas



Design elements that engage people who walk, roll and bike, and create a sense of place between commercial properties and the public realm through landscaping, street furniture and public art.

Safe and Welcoming Atmosphere

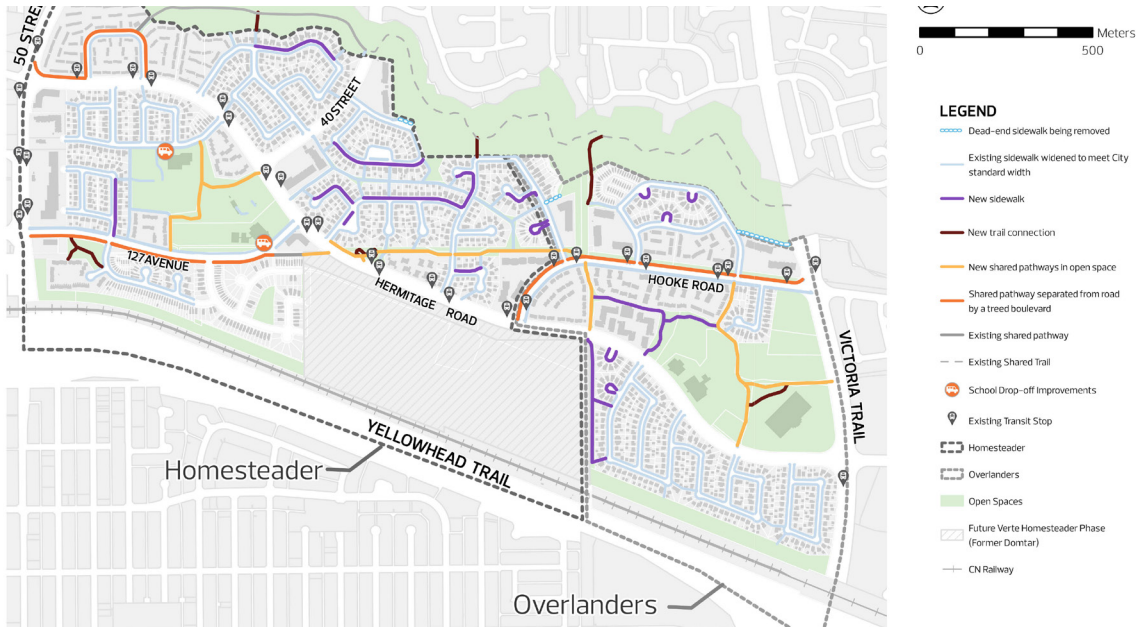


Create safe and secure streets, public spaces, and buildings to foster a sense of quality of life and confidence in our communities. Build resilient, safe communities by using effective urban design.

What we heard

The following sections include a summary of what we heard through the online survey and at the in-person event. The summary has been developed to reflect the relevancy, frequency and diversity of responses we received based on the feedback provided by participants on the draft design.

Walking, rolling and biking



Proposed design

- + Add shared pathways in key areas to better connect people who bike to the City's greater bike network and destinations within the neighbourhoods
- + Add missing sidewalks along local roads to improve accessibility
- + Replace existing sidewalks with ones that meet the City's current standards
- + Remove dead-end sidewalks
- + Replace existing sidewalk lighting and add lighting, where possible, for all new sidewalks and shared pathway connections

What we heard

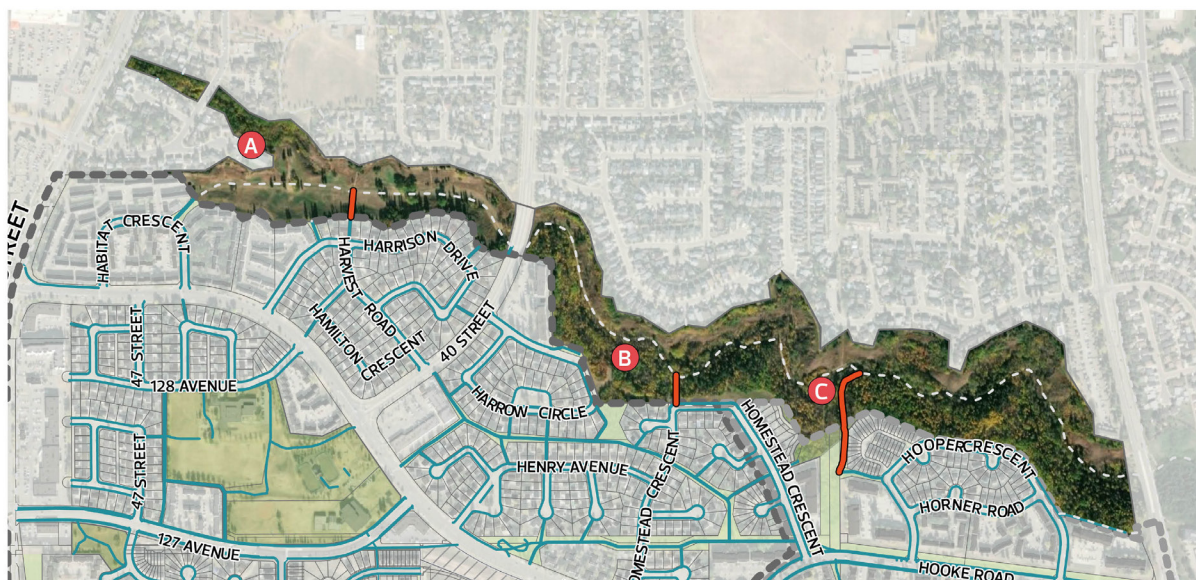
- + A majority of participants believe that the proposed designs for improving walking, rolling and biking facilities at least somewhat meet the community's needs
- + Comments that participants provided indicated that:
 - + Safety is important for people who bike
 - + Some participants support adding shared pathways for people who walk and bike
 - + Some participants are concerned about the narrowing of roads to accommodate adding shared pathways
 - + Some participants are concerned parking may be reduced to accommodate shared pathways

Improved Kennedale Ravine connections

Proposed design

- + Three new trail connections into Kennedale Ravine:
 - Proposed site A – connection from existing breezeway* sidewalk near Harrison Drive and Harvest Road to Kennedale Ravine Trail
 - Proposed site B – connection from Homestead Crescent to Kennedale Ravine Trail
 - Proposed site C – connection from existing breezeway* sidewalk near Hooper Crescent to Kennedale Ravine Trail

**A breezeway is a public pathway between two private properties. Wider breezeways and pathways make it easier for people who walk and bike to move around the neighbourhood.*



What we heard

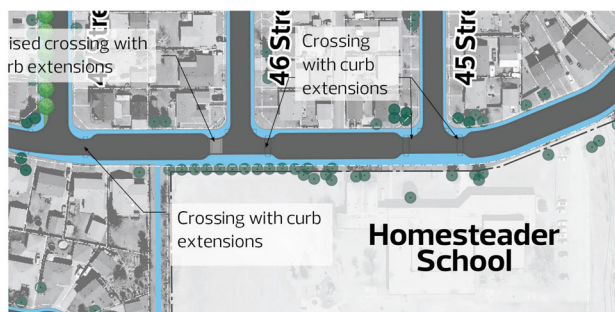
- + The majority of participants felt the proposed design for Kennedale Ravine connections reflects the needs of the community
- + Participants support improving access to Kennedale Ravine
- + Some participants are concerned about the safety of new trails into Kennedale Ravine
- + Some participants are concerned about increased access to the neighbourhoods from Kennedale Ravine



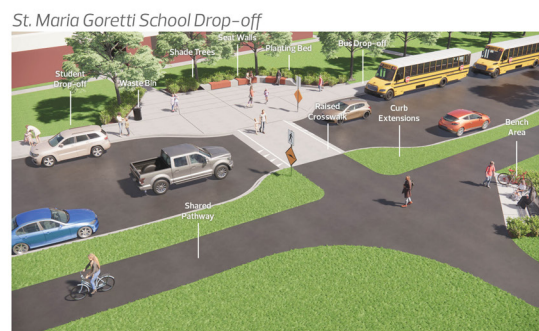
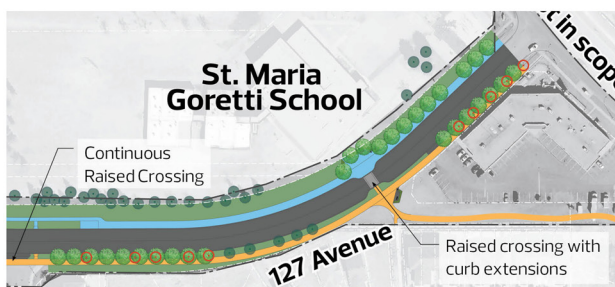
Improved school drop off

Proposed design

- + Add widened sidewalks in front of Homesteader School and St. Maria Goretti School for student drop off and pick up by buses and parents
- + Add raised crosswalks and curb extensions near schools to improve the visibility of people crossing roadways
- + Add seat walls, waste bins and landscape planting in front of school front yards
- + Add trees where possible



Homesteader School Drop-off



St. Maria Goretti School Drop-off

What we heard

- + A majority of participants felt the proposed design for the school drop-off areas at least somewhat reflects the needs of the community
- + Some participants support the potential for the proposed changes to reduce speed
- + Some participants are concerned that widening the sidewalk will make the road narrower and could make it more dangerous for people who drive and for people who walk during pick-up and drop-off times



Traffic movement and safety improvements

127 Avenue redesign

Proposed design

- + Add a shared pathway with a treed boulevard on the south side of the road
- + Add a landscaped median between 47 Street and 50 Street to create left-turn bays onto 50 Street and into the commercial parking lot
- + Maintain a sidewalk with a treed boulevard on the north side of the road from 50 Street up to St. Maria Goretti School
- + Add curb extensions on 127 Avenue at 47 Street and 45 Street
- + Add raised crosswalks with curb extensions across 127 Avenue at the school crosswalk and the shared pathway connection on the west side of Homesteader Park
- + Add continuous raised crossings on 47 Street and 45 Street to give priority to people who walk, roll and bike along 127 Avenue



What we heard

- + A majority of participants felt the proposed design for 127 Avenue at least somewhat reflects the needs of the community
- + Participants have mixed comments on widening sidewalks and adding a shared pathway
- + Some participants feel wider sidewalks will be safer for people who walk
- + Some participants are concerned there will be increased congestion due to narrower lanes
- + Some participants are concerned parking may be reduced if the treed boulevard is added

Hooke Road redesign

Proposed design

- + Add a shared pathway with a treed boulevard on the north side of the road
- + Maintain a sidewalk with a treed boulevard on the south side of the road
- + Add curb extensions on Hooke Road at the two Hooper Crescent intersections and the Homestead Crescent intersection
- + Add continuous raised crossings on Homestead Crescent, Hooper Crescent and Hollinger Close to give priority to people who walk, roll and bike along Hooke Road



What we heard

- + The participants felt the proposed design for Hooke Road reflects the needs of the community
- + Participants showed support for the shared pathway and added greenery
- + Some participants support the shared pathway as a safe place for people who bike
- + Some participants are concerned that narrow driving lanes on Hooke Road will create congestion and will be too narrow to accommodate both buses and on-street parking, especially in winter with snow clearing and windrows
- + Participants raised concerns about snow clearing and treed boulevards being added
- + Some participants support adding trees and landscaping but are concerned about the maintenance

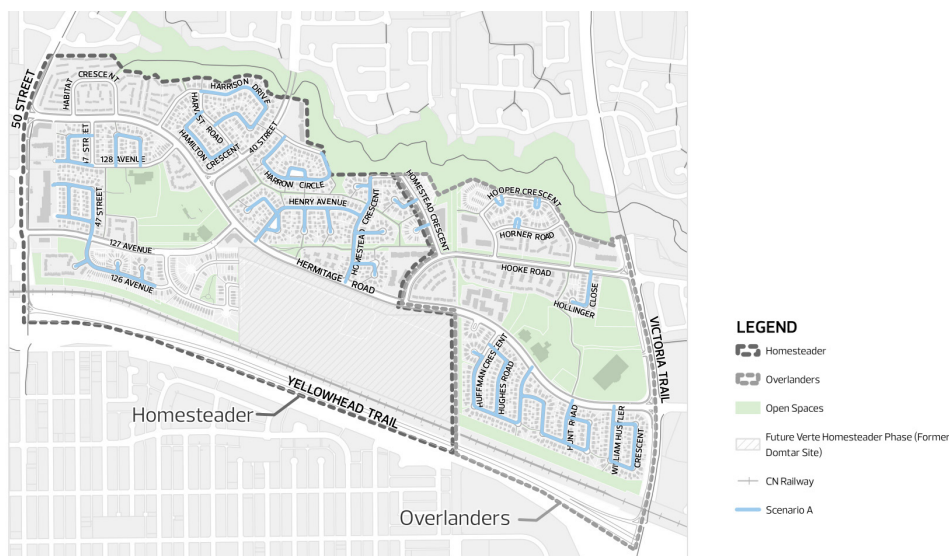


Local roads redesign

Scenario A

The draft design for some local roads in Overlanders and Homesteader (Scenario A) includes the following changes:

- + Widen sidewalks on both sides of the road
- + Add sidewalks where they are currently missing on one side of the road
- + Replace curbs with new City standard, lower-profile curbs



Scenario A: Sidewalks on both sides of the road with no boulevards. Parking unchanged.

What we heard

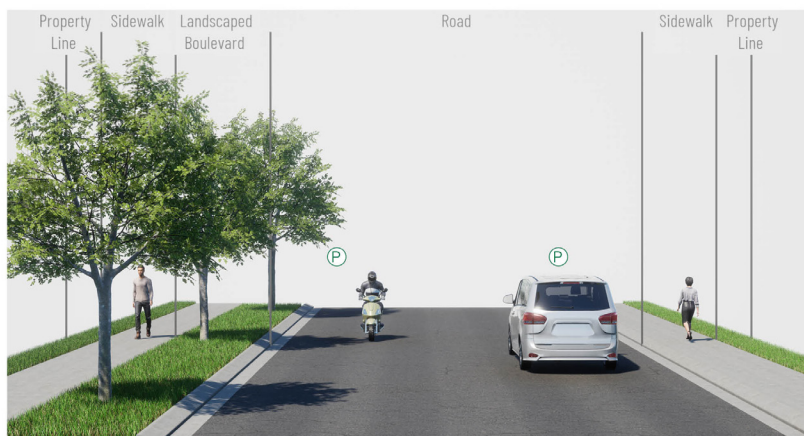
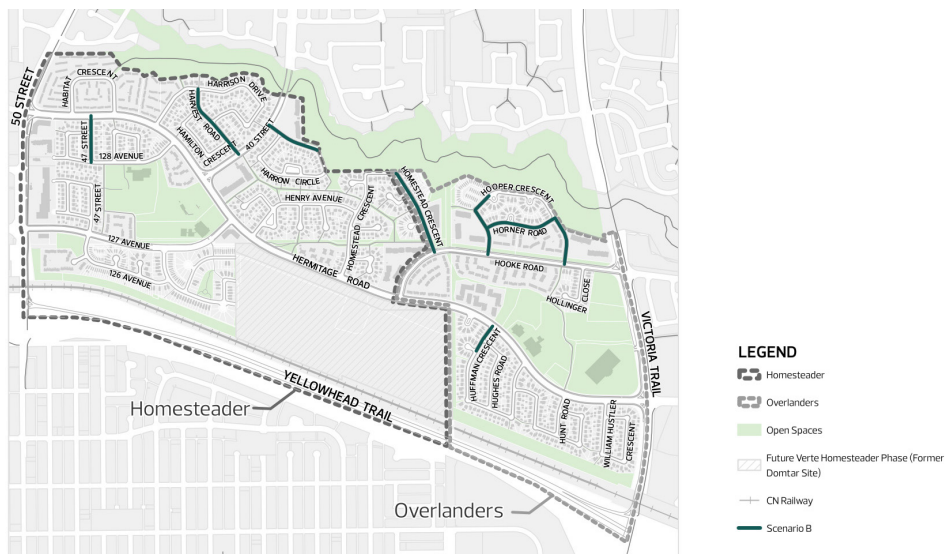
- + Participants support wider sidewalks and low-profile curbs
- + Participants are concerned congestion will increase due to narrow lanes



Scenario B

The draft design for some local roads in Overlanders and Homesteader (Scenario B) includes the following changes:

- + Widen sidewalks on both sides of the road
- + Add a landscape boulevard on one side of the road
- + Replace curbs with new City standard, lower-profile curbs where the sidewalk is next to the road



Scenario B: Sidewalk with a landscape boulevard on one side of the road and a sidewalk without a boulevard on the other side. Parking unchanged.

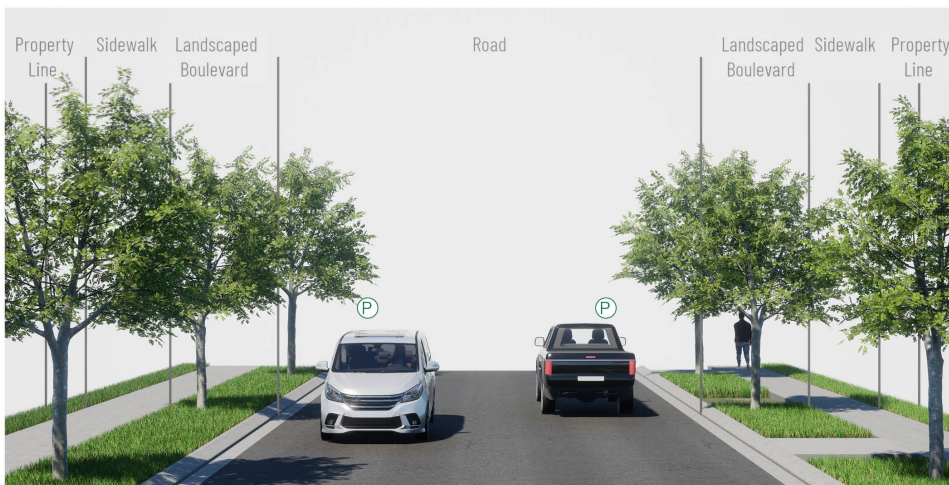
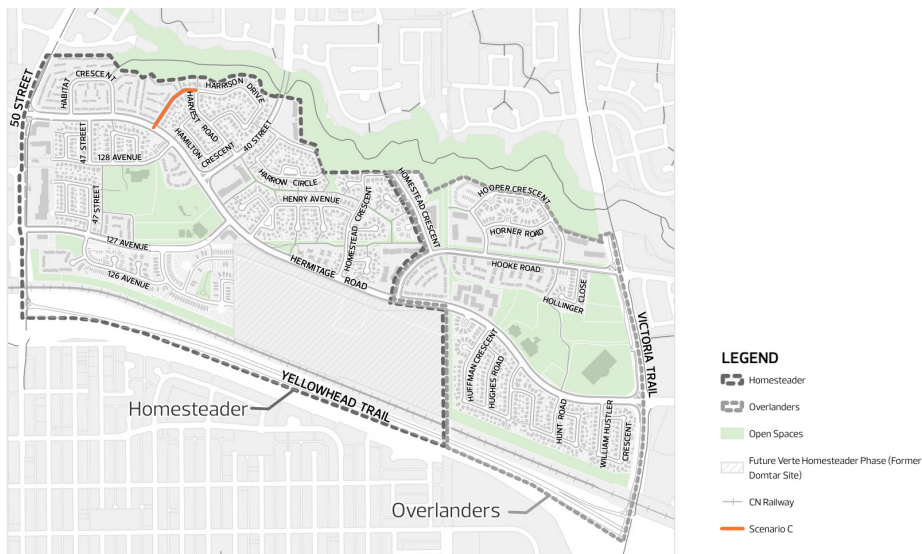
What we heard

- + Participants support having the sidewalk along the road
- + Participants have less support for a landscaped boulevard
- + Participants are concerned about roads being narrowed and impacts on on-street parking, specifically on Hooper Crescent and Horner Road where townhouses and apartments use street parking

Scenario C

The draft design for Harrison Drive (from Hermitage Road to Harvest Road) (Scenario C) includes the following changes:

- + Widen sidewalks on both sides of the road
- + Add a landscape boulevard with trees on both sides of the road



Scenario C: Sidewalks with landscape boulevards on both sides of the road. Parking unchanged.

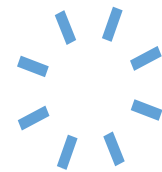
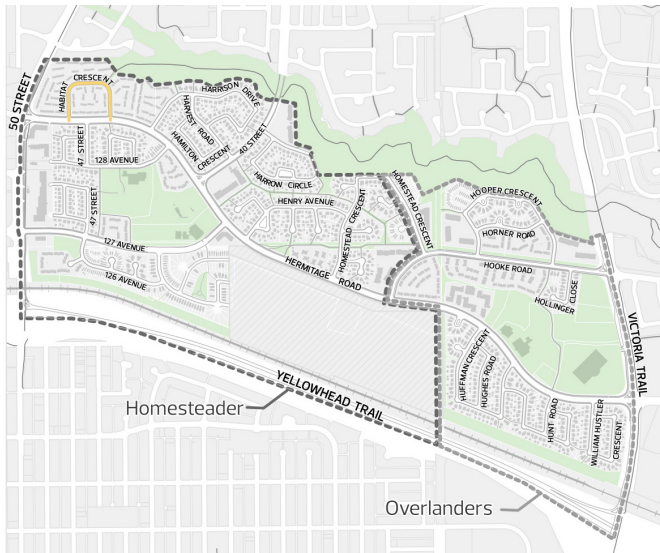
What we heard

- + Participants support adding sidewalks with landscape boulevards on both sides of the road
- + Participants are concerned about roads being narrowed

Scenario D

The draft design for Habitat Crescent (Scenario D) includes the following changes:

- + Add a shared pathway with landscape boulevard and trees on one side of the road to connect to the Kennedale Ravine
- + Widen the sidewalk on the other side of the road



Scenario D: Shared pathway with landscape boulevard on one side of the road and a sidewalk without a boulevard on the other side. Parking unchanged.

What we heard

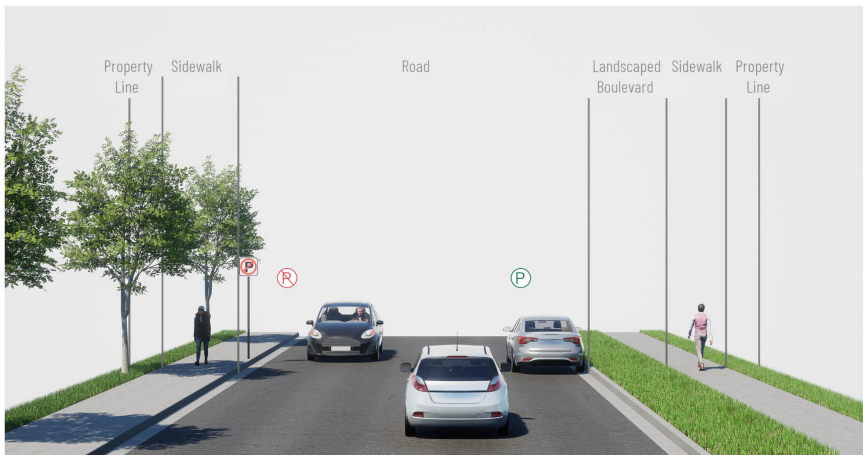
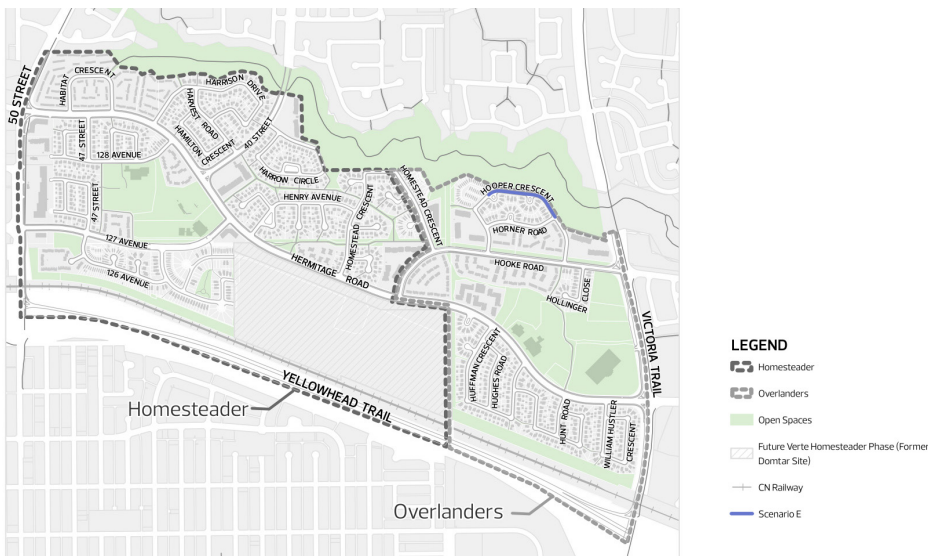
- + Some participants support the shared pathway as a safer place for people who walk and bike
- + Some participants are concerned about narrow driving lanes creating congestion and being too narrow to accommodate on-street parking, especially in winter with snow clearing and windrows



Scenario E

The draft design for Hooper Crescent (Scenario E) along the ravine includes the following changes:

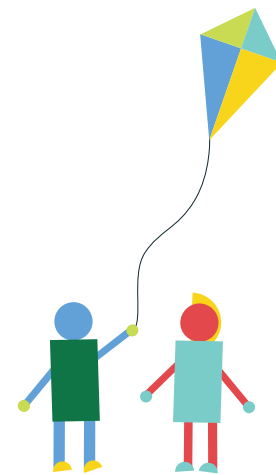
- + Widen the sidewalks on both sides of the road
- + Add a landscape boulevard on one side of the road
- + Remove street parking on the ravine side of the road



Scenario E: Sidewalk with a landscape boulevard on one side of the road and a sidewalk without a boulevard on the other side. Parking removed from one side of road.

What we heard

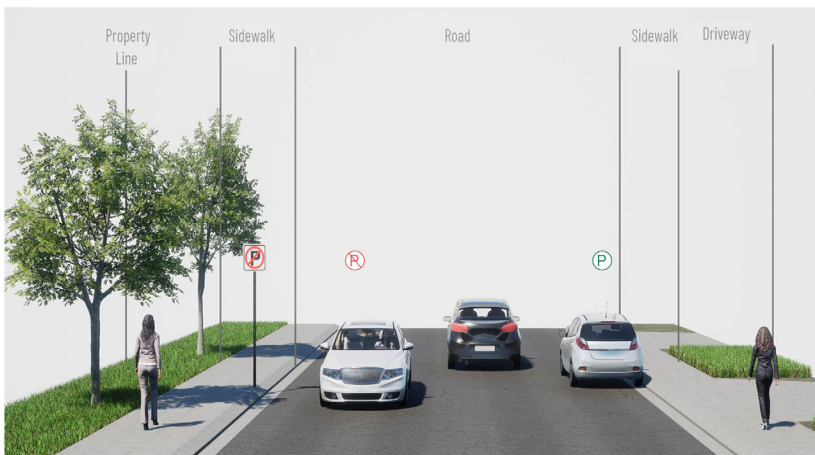
- + Participants do not support removing on-street parking along Kennedale Ravine



Scenario F

The draft design for Homesteader Crescent (Scenario F) along the ravine includes the following changes:

- + Sidewalks on both sides of the road
- + Trees planted on the ravine side of the road
- + Parking is removed from one side of the road along the ravine



Scenario F: Sidewalks on both sides of the road. Trees planted on the ravine side of the road. Parking removed from one side of road.

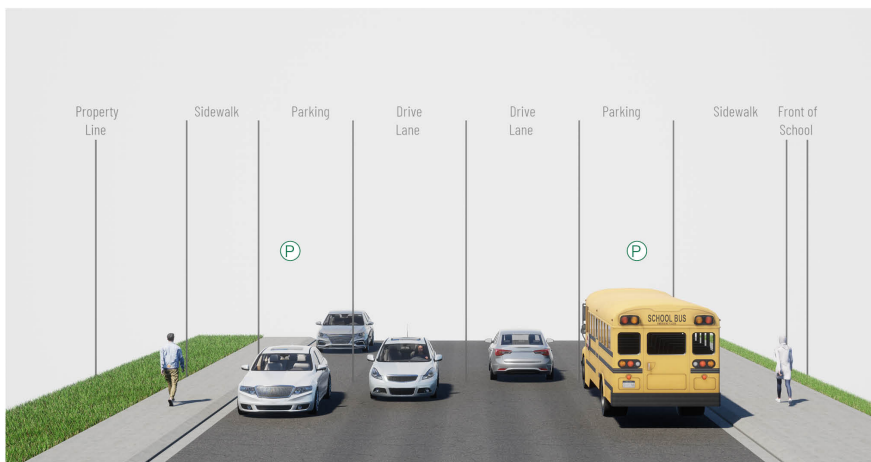
What we heard

- + Participants show support for improving green space along the Kennedale Ravine
- + Participants support sidewalks on both sides of the road
- + Participants are concerned about removing on-street parking

Scenario G

The draft design for 128 Avenue (from Hermitage Road to 47 Street) (Scenario G) includes the following changes:

- + Widen the sidewalk on both sides of the road, including an extra wide sidewalk in front of Homesteader School
- + Maintain a wide roadway to provide space for school bus and parent drop off and pick up
- + Add raised crosswalks and curb extensions near the school to improve visibility of people crossing roadways



Scenario G: Standard width sidewalk on one side of the road and an extra-wide sidewalk on the school side of the road.

What we heard

- + Participants supported the proposed design
- + Participants emphasized previously mentioned concerns about student safety when crossing the road and people walking in the area

Other comments related to traffic movement and safety

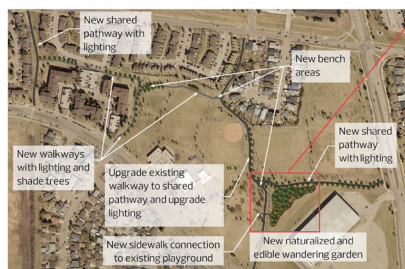
- + Participants are concerned that proposed improvements will narrow roads and may cause congestion and reduce on-street parking options
- + Project cost and increased taxes are a concern
- + Speeding on Hermitage Road is a concern

Place and placemaking

Overlanders Park improvement

Proposed design

- + Upgrade the existing north-south pathway into a shared pathway
- + Add looping pathways around the park site and sports fields
- + Replace existing sidewalk lighting and add lighting to all new pathways
- + Add shade trees along sidewalks and near seating areas
- + Add a wandering garden with edible and naturalized trees and plants and gravel walkways
- + Add a shade structure with seating



Plan View of Park



Plan View of Wandering Garden



Wandering Garden Shade Structure and Boulder Seating



Birdseye View of Wandering Garden



Seating Area in Wandering Garden

What we heard

- + Participants felt the proposed design for Overlanders Park reflects the needs of the community
- + Some participants support adding lights to make the park feel safe
- + Participants support the improvements but are concerned about the maintenance

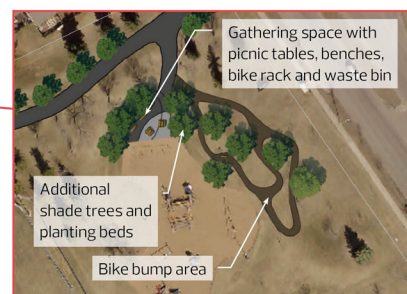
Homesteader Park improvement

Proposed design

- + Add shared pathways that connect the schools, sports fields and playgrounds
- + Provide lighting along shared pathways and in gathering spaces
- + Add benches and waste bins along shared pathways
- + Add naturalized plantings and shade trees along pathways and near seating areas
- + Add bike bumps to provide a family-friendly recreation activity
- + Add a small gathering space north of the existing central playground with benches, picnic tables, bike racks and waste bins



Plan View of Park



Plan View of Gathering Space



Perspective View of Gathering Space and Bike Bump Area



Perspective View of Gathering Space and Bike Bump Area

What we heard

- + Participants felt the proposed design for Homesteader Park reflects the needs of the community
- + Participants support adding paths to make the park more accessible
- + Participants support adding elements to the park for kids and families to use, such as benches and bike bumps
- + Some participants are concerned about improvements being vandalized

Pocket park improvement

Proposed design

- + Add pathways through pocket parks
- + Add seating areas, benches and waste bins
- + Add landscaping features such as plantings, shade trees and naturalization



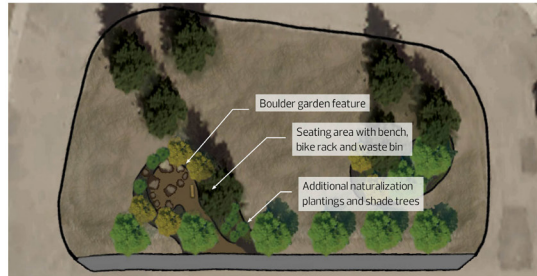
Perspective View of Henry Avenue Seating Area



Henry Avenue Pocket Park



Perspective View of Harrow Circle Boulder Garden



Harrow Circle Pocket Park



Perspective View of 127 Avenue Pocket Park



127 Avenue Pocket Park



Perspective View of Hermitage Road Pocket Park



Hermitage Road Pocket Park

What we heard

- + Participants felt the proposed design for pocket park improvements reflects the needs of the community
- + Participants support the improvements but are concerned about the maintenance
- + Participants would prefer garbage cans and kid-friendly activities to be added



Other comments relating to place and placemaking

- + Some participants asked about making sure the parks are visible from the street and adding lighting to increase sight lines and safety
- + There was one request for better lighting at crosswalks
- + Participants are concerned about vandalism
- + Participants support the improvements but are concerned about the maintenance

Other feedback that was shared with the Project Team includes:

- + Concerns about how the project is funded and if there will be an increase to property taxes as a result of Neighbourhood Renewal
- + Concerns about encampments in the area and increased vandalism in the neighbourhoods and to the new improvements



Next steps

Thank you to all who shared their input during the **Community Feedback on Draft Design** stage of engagement.

In fall 2024, the public will be invited to the **Community Feedback on Final Design** stage of engagement for Overlanders and Homesteader Neighbourhood Renewal. During this stage, we will invite you to **ADVISE** on the final design for Overlanders and Homesteader.

Information will also be provided about cost-sharing opportunities for decorative street lights and sidewalk reconstruction through the Local Improvement process.

For information about Overlanders and Homesteader Neighbourhood Renewal, upcoming engagement events and to subscribe to project updates, visit edmonton.ca/BuildingOverlandersHomesteader.

Working together to make the most out of your neighbourhood.

This is your city and your neighbourhood. We want to understand how you experience your neighbourhood and ask for your input on how we might improve it. We will engage and work with you on the renewal of roads, sidewalks, street lights and park spaces. We will also explore other opportunities to enhance how people live and interact in your neighbourhood. We commit to being open and transparent about how your input is used. Let's make the most out of your neighbourhood.

| **SHARE** YOUR VOICE
SHAPE OUR CITY

Edmonton