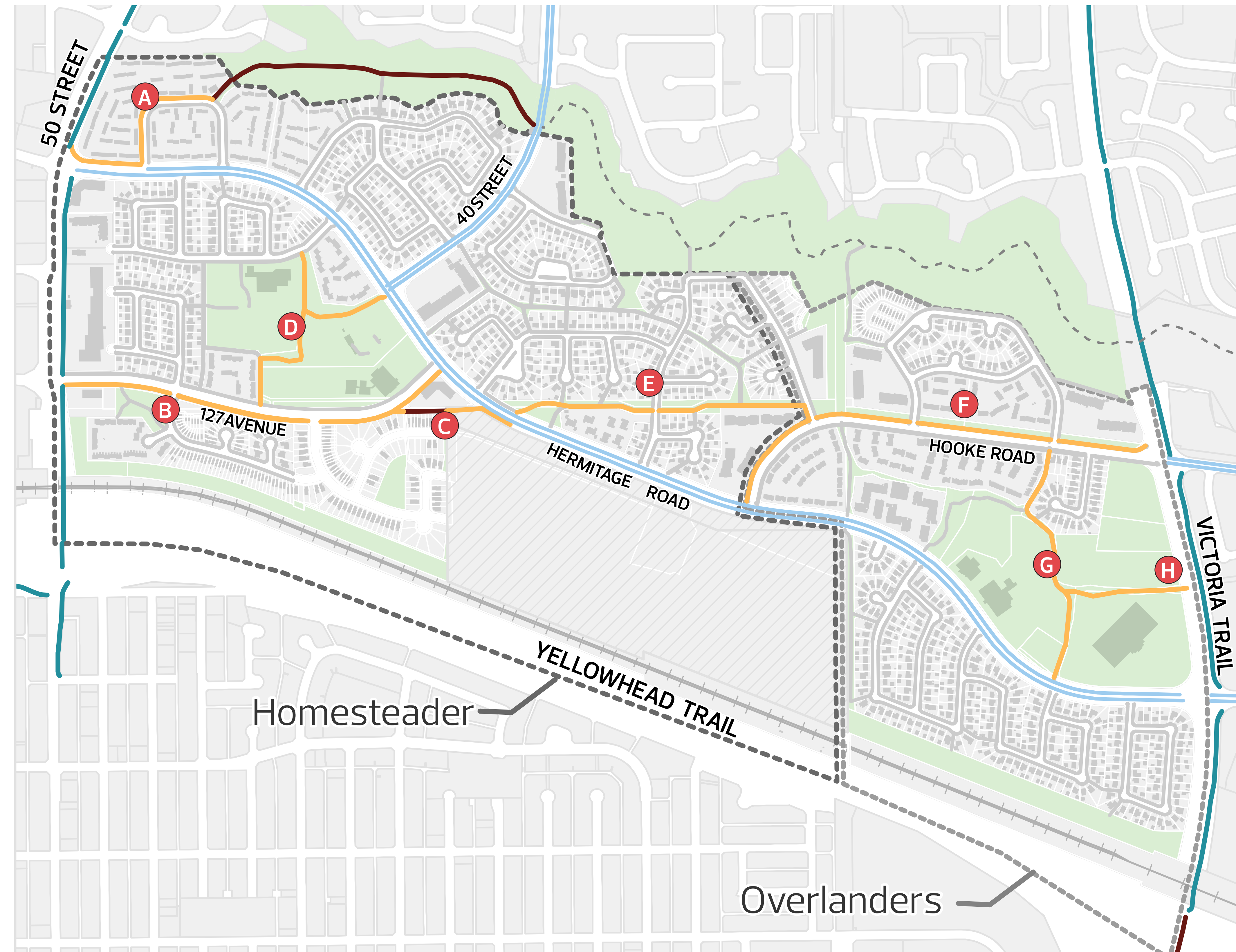


Walking rolling and biking | Improved biking

What the plan includes:

- A** Shared pathway separated from roadway by treed boulevard along Habitat Crescent to improve connection from Kennedale Ravine trail to Hermitage Road and 50 Street
- B** Existing sidewalk widened into shared pathway separated from roadway by treed boulevard along one side of 127 Avenue
- C** New shared pathway connection from existing shared pathway near 127 Avenue to Hermitage Road
- D** New shared pathway connections through Homesteader Park
- E** Existing breezeway connection widened into a shared pathway
- F** Existing sidewalk widened into a shared pathway separated from roadway by treed boulevard along the north side of Hooke Road
- G** Upgrade of existing sidewalk through Overlanders Park into a shared pathway
- H** New shared pathway connecting to Victoria Trail



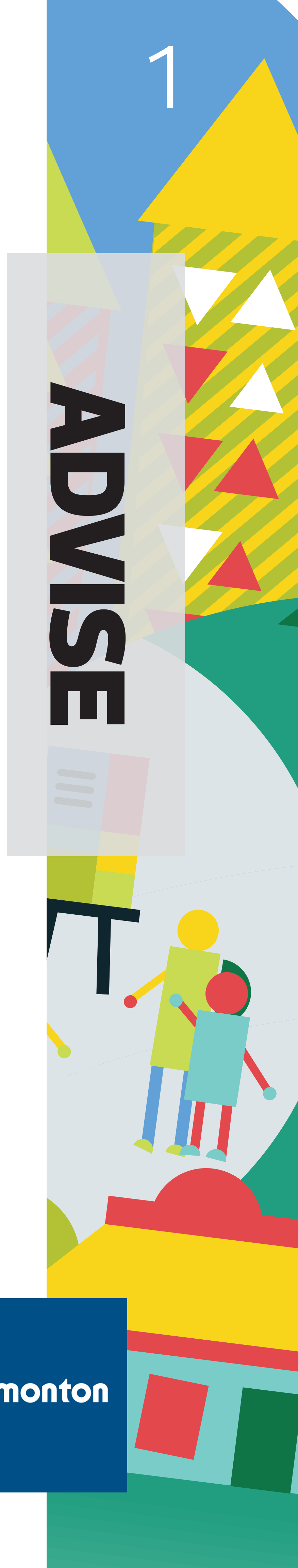
0 250 Meters

LEGEND

- Existing district connector bike route
- Existing on-street bike route
- Existing shared trail
- New shared pathway
- Existing shared pathway
- Sidewalks and trails
- Homesteader
- Overlanders
- Future Verte Homesteader Phase (Former Domtar)
- Open Spaces
- CN Railway

Learn more by going to: edmonton.ca/BuildingOverlandersHomesteader
 Designs are subject to approvals and funding.

SHARE YOUR VOICE
SHAPE OUR CITY



Walking rolling and biking | Improved Kennedale Ravine connections

What the plan includes:

- + Three trail connections into Kennedale Ravine. These new routes are located in open areas with few potential tree conflicts. All ravine connections are subject to environmental approvals and funding
- A** Trail connection from existing breezeway sidewalk near Harrison Drive and Harvest Road to the Kennedale Ravine Trail
- B** Trail connection from Homestead Crescent to the Kennedale Ravine Trail
- C** Trail connection from existing breezeway sidewalk near Hooper Crescent to the Kennedale Ravine Trail



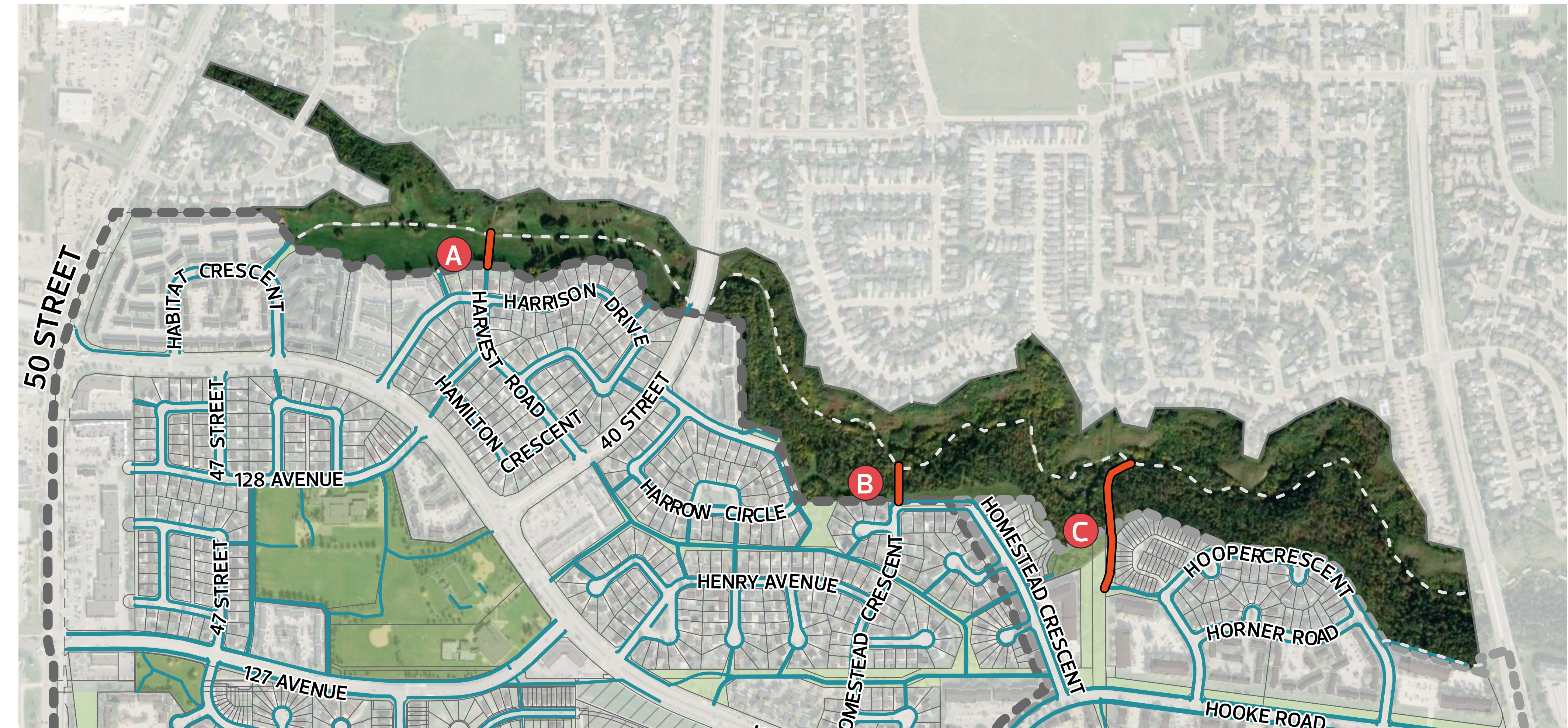
Location A Photo



Location B Photo

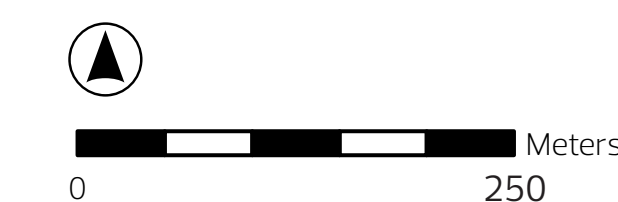


Location C Photo



LEGEND

- New connections into Kennedale Ravine
- Existing Kennedale Ravine pathway
- Sidewalks and pathways
- Homesteader
- Overlanders
- Future Verte Homesteader Phase (Former Domtar)
- Open Spaces
- CN Railway



What the next steps will include:

- + Proposed trails are subject to formal environmental review conducted by ecologists and City environmental planning staff as per the River Valley Bylaw

Learn more by going to: edmonton.ca/BuildingOverlandersHomesteader

Designs are subject to approvals and funding.

SHARE YOUR VOICE
SHAPE OUR CITY



ADVISE



Placemaking | Corner Store Program project

What is the Corner Store Program?

- + Corner Store Program projects work in collaboration with Neighbourhood Renewal in upgrading City-owned land surrounding commercial sites and in some cases, extend onto private land to achieve the goals of the program
- + The Corner Store Program aims to deliver streetscape improvements and building renovations that improve community connection and economic viability

The program focuses on the following goals:

- + Increase the perception and experience of safety
- + Build more attractive and functional streetscapes
- + Create barrier-free spaces for all modes of transportation
- + Connect commercial properties to bike networks
- + Add placemaking elements that make the area more interesting
- + Install features that facilitate community connection



Key Plan



Illustration of proposed improvements



Photograph of existing conditions from intersection of 127 Avenue and Hermitage Road

Learn more by going to: edmonton.ca/BuildingOverlandersHomesteader
 Designs are subject to approvals and funding.

SHARE YOUR VOICE
SHAPE OUR CITY



Overlanders and Homesteader Neighbourhood Renewal | Community Feedback on Final Design

Low-Impact Development (LID) | Absorbent landscaping

What the plan includes:

- + The City of Edmonton, in collaboration with EPCOR, will be installing absorbent landscaping for flood mitigation. Absorbent landscaping looks similar to other boulevards, but is designed with a shallow depression to collect road runoff and allow it to absorb into the ground
- + Absorbent landscaping areas will be grass and may have trees
- + Locations for absorbent landscaping are noted on the final design maps on Boards 5 through 10

Why absorbent landscaping?

- + Currently, when it rains, the water on your street flows into a catch basin connected to underground pipes which lead to the wastewater treatment plant or into the North Saskatchewan River. Absorbent landscaping will slow water from entering the stormwater system and reduce local flooding. Absorbent landscaping has no pipes and is not connected to the storm system

What are the benefits?

- + Helps reduce local flooding by absorbing small amounts of rain
- + Helps to combat climate change impacts by creating healthy vegetation

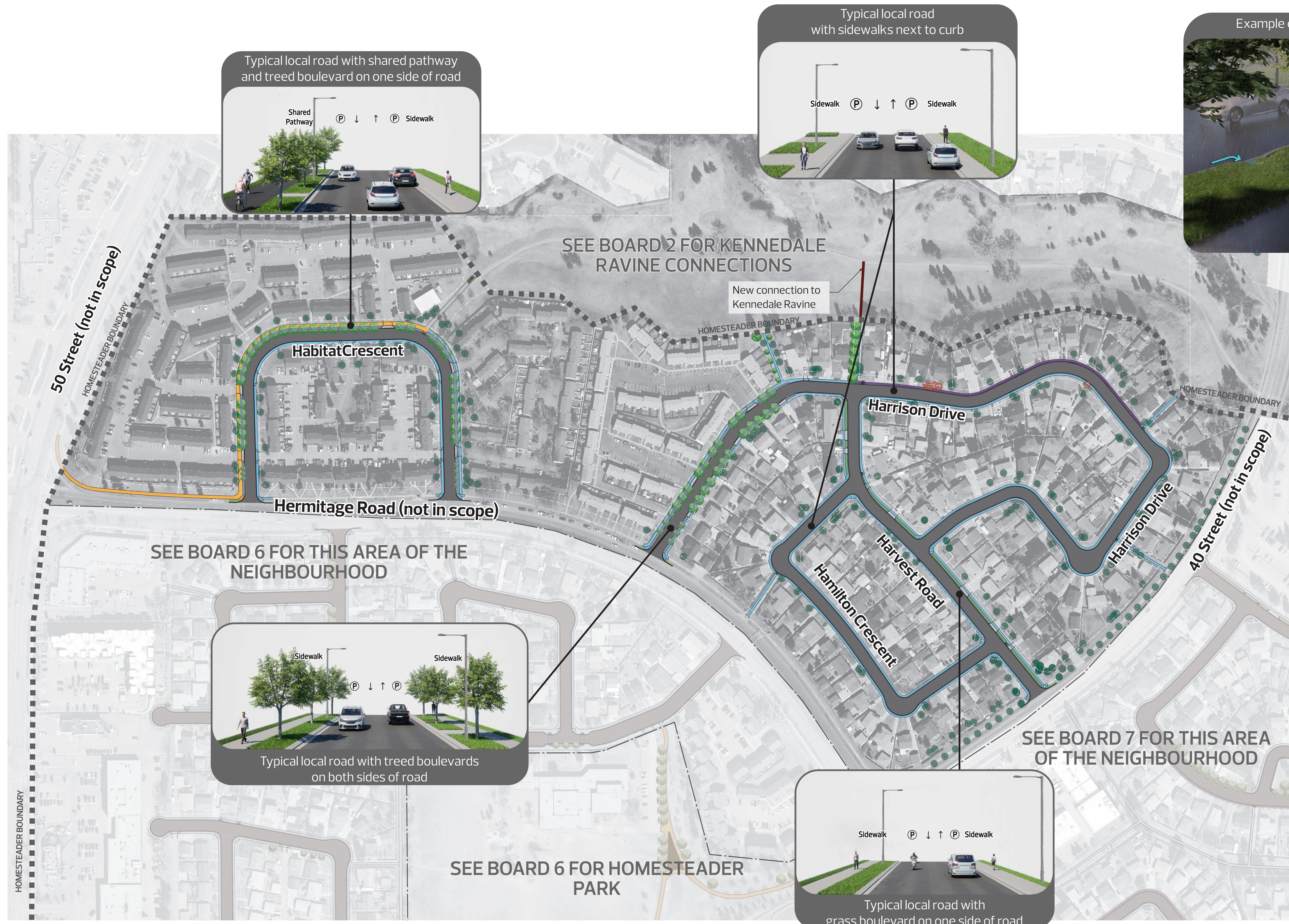


Illustrations of absorbent landscaping boulevards

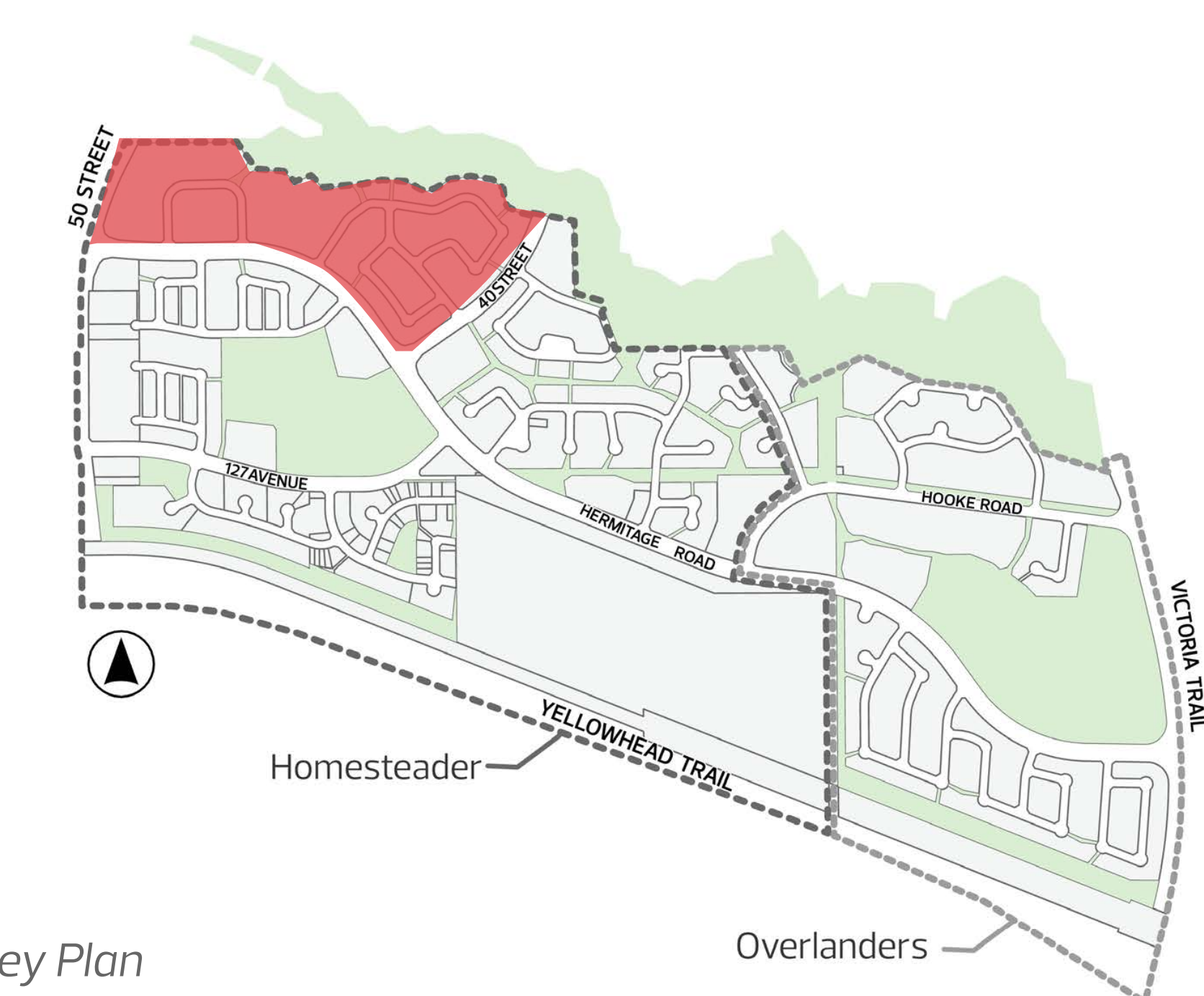
ADVISE

Final design plans | Area A

ADVISE

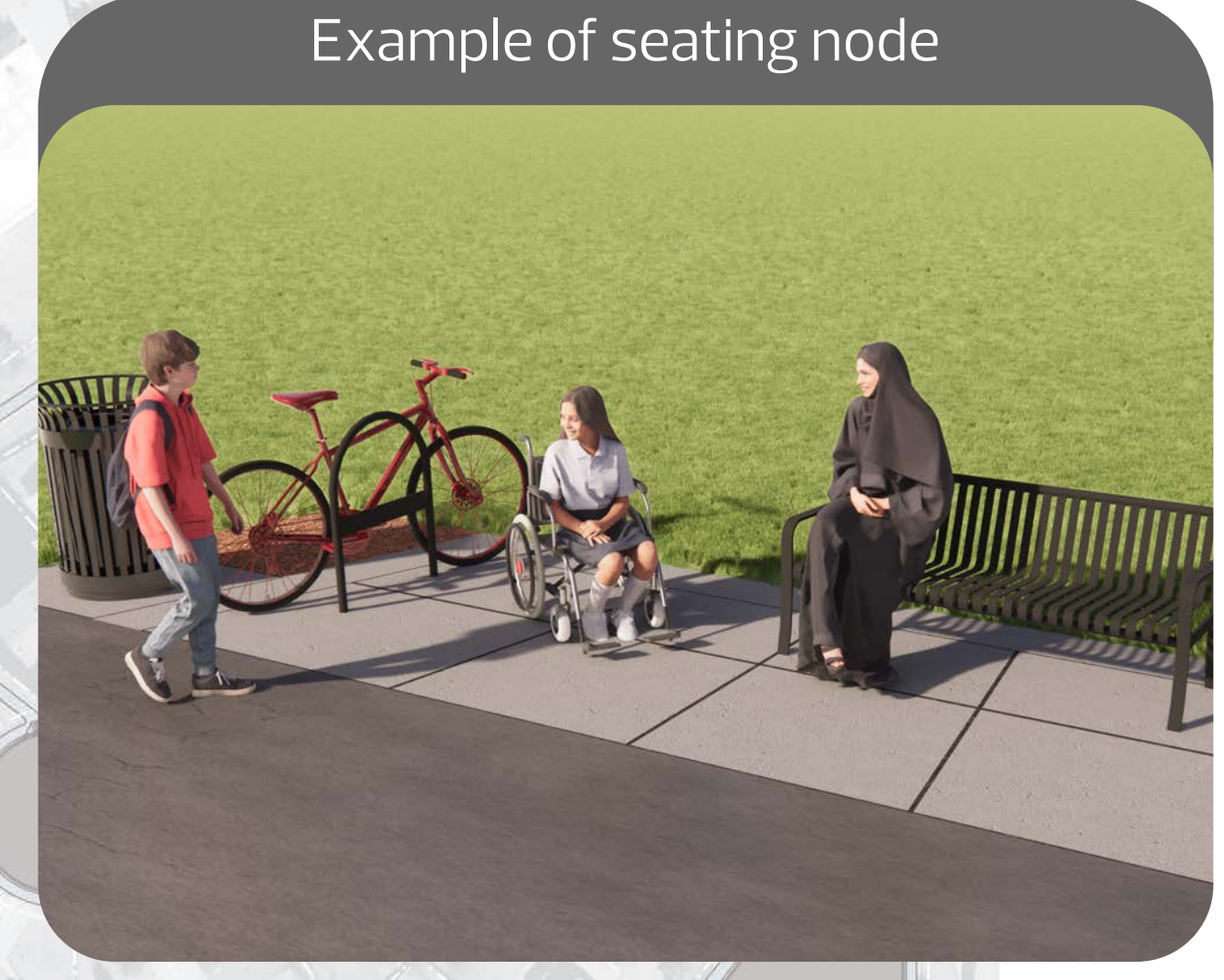
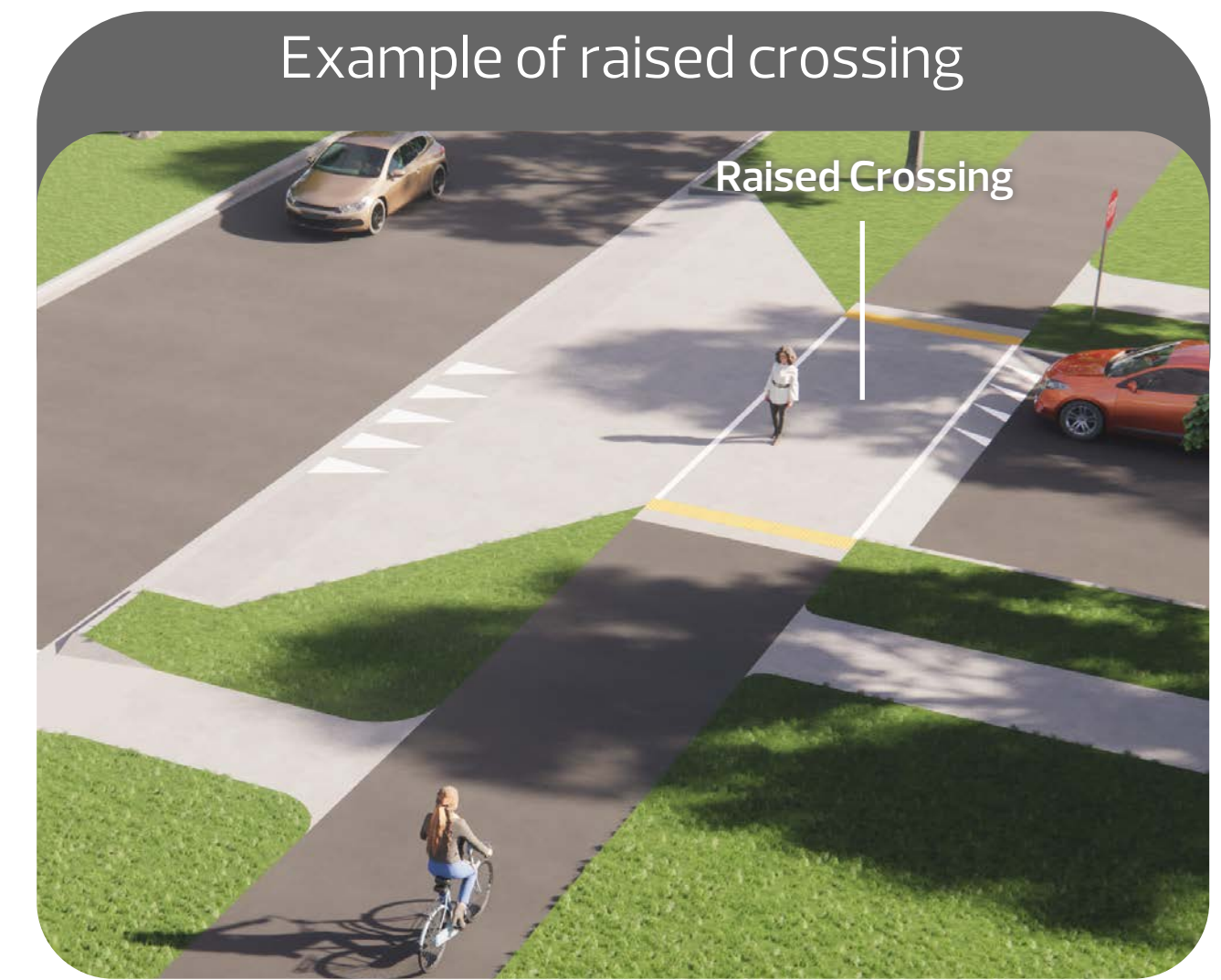
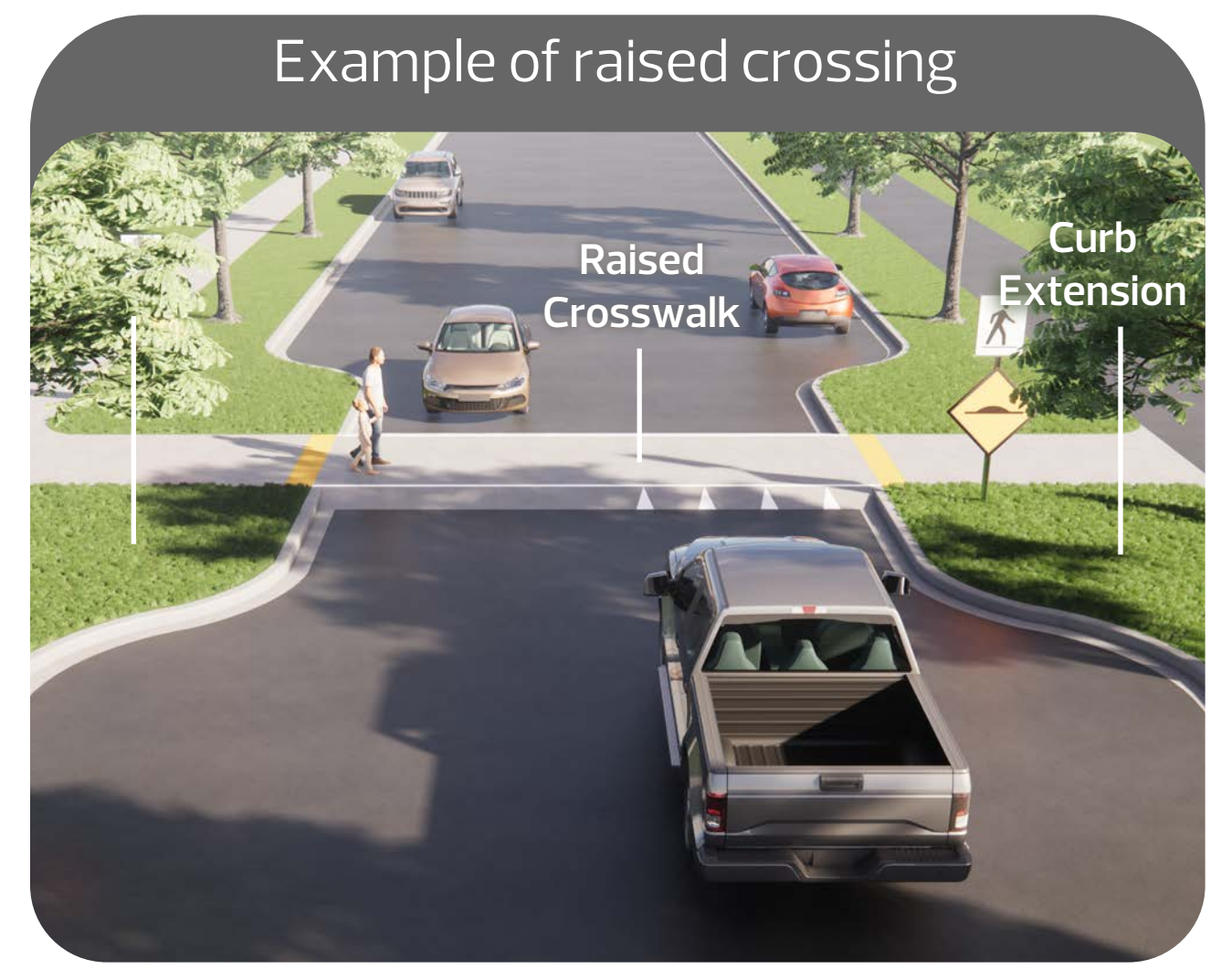
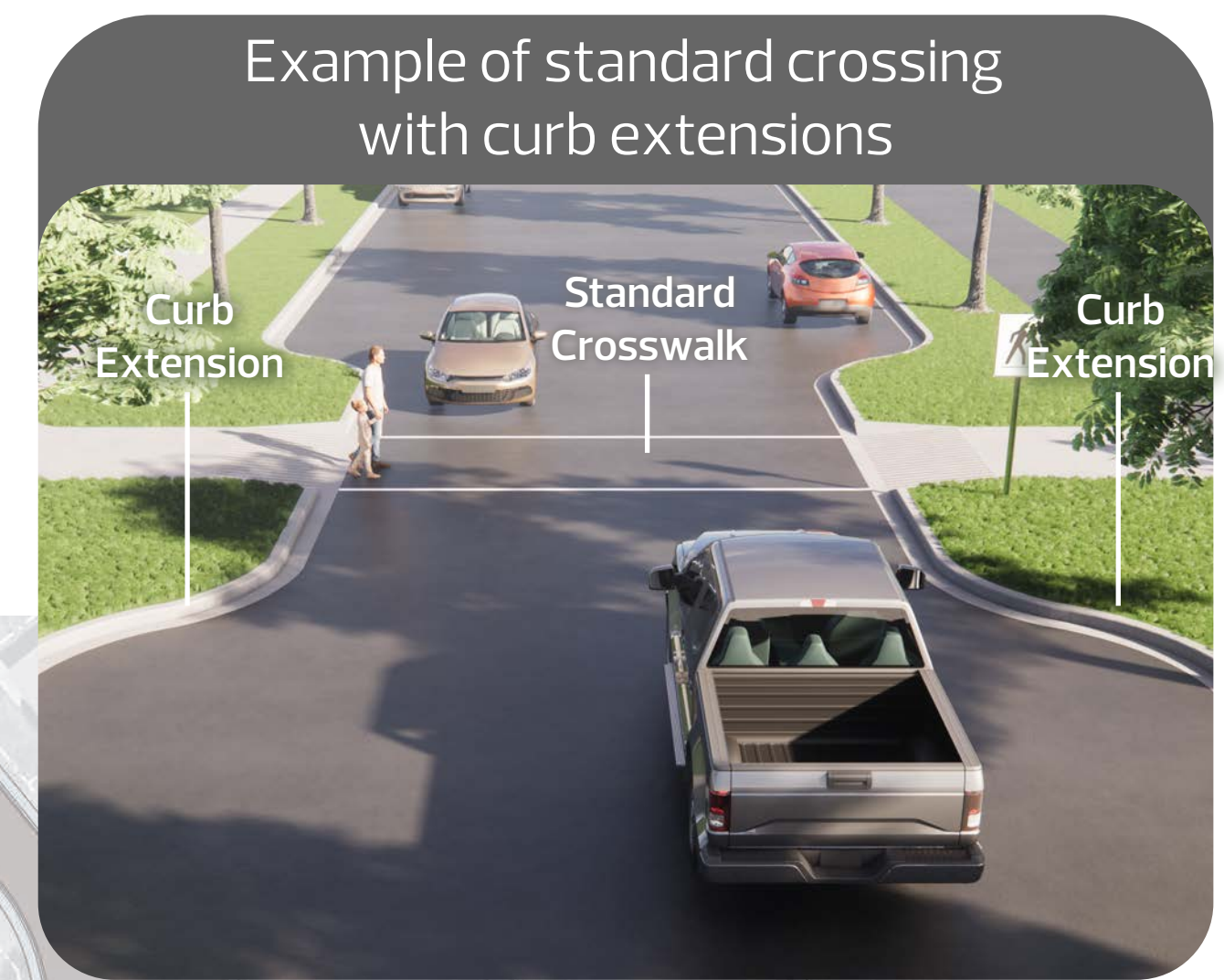
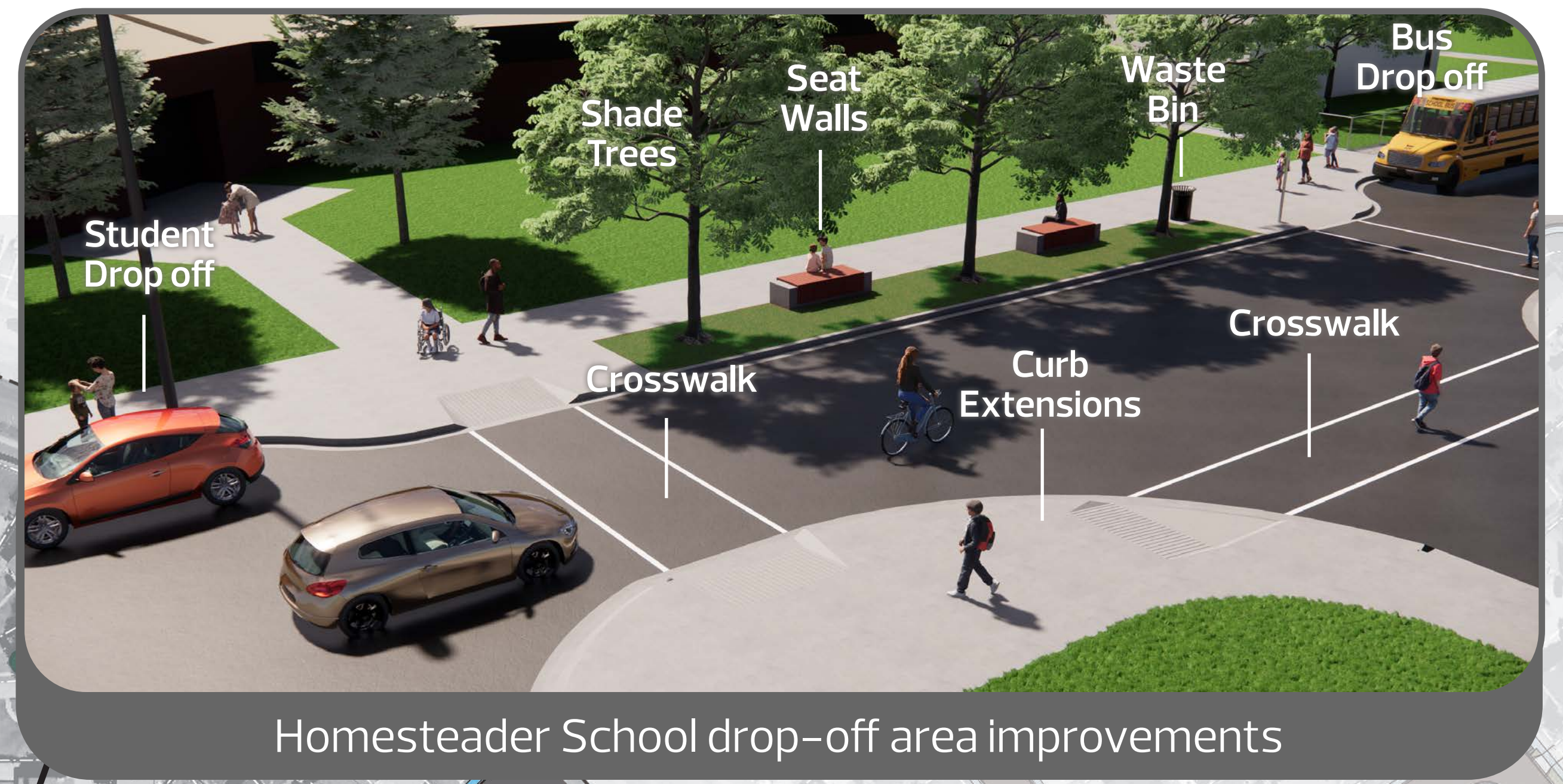


- LEGEND**
- Upgraded roadway
 - Grass boulevard
 - Existing sidewalk widened
 - New sidewalk
 - Shared pathway
 - New trail connection
 - New City-owned tree
 - Existing trees to remain
 - Proposed removal of City-owned tree
 - Absorbant landscaping

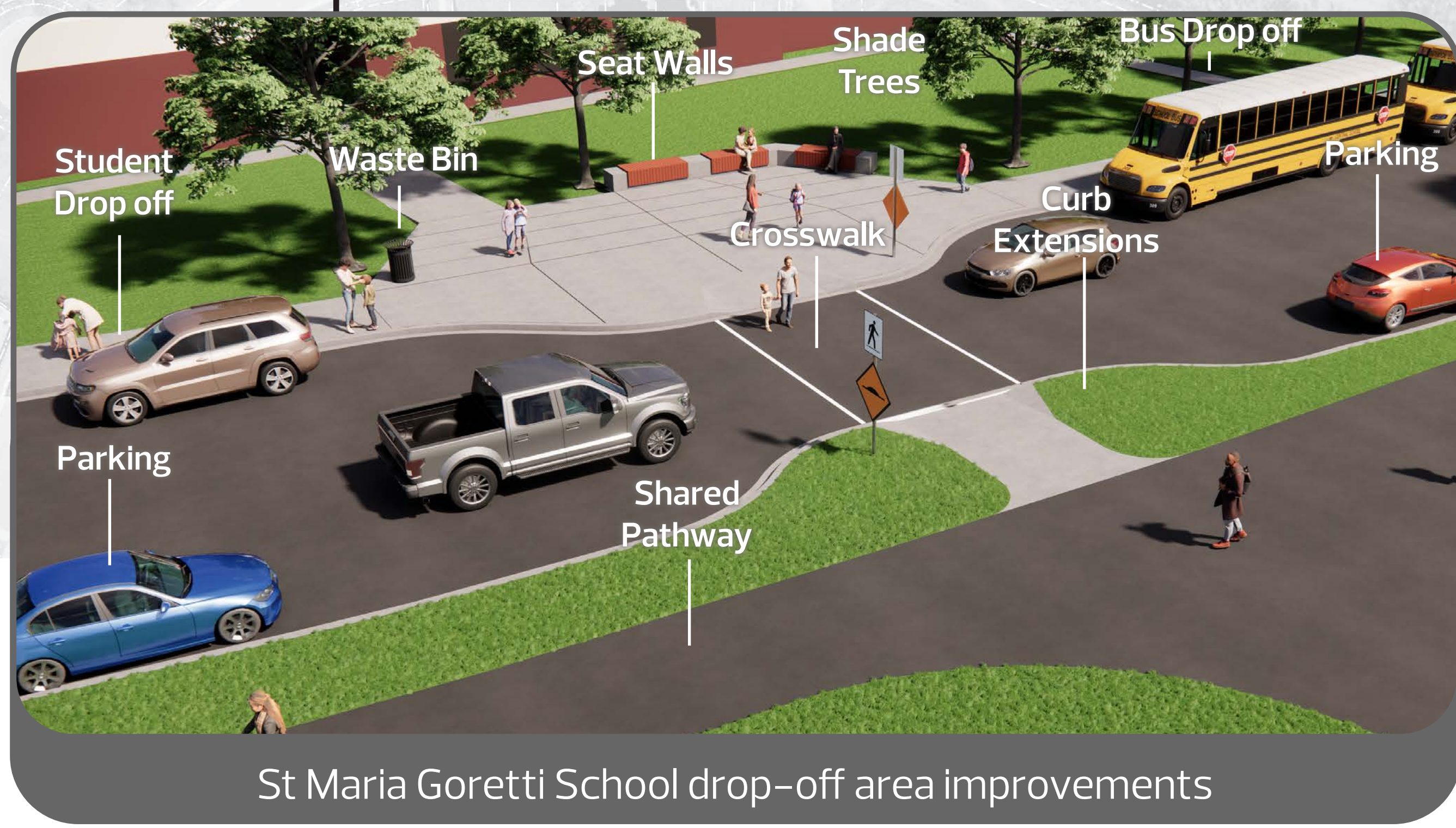
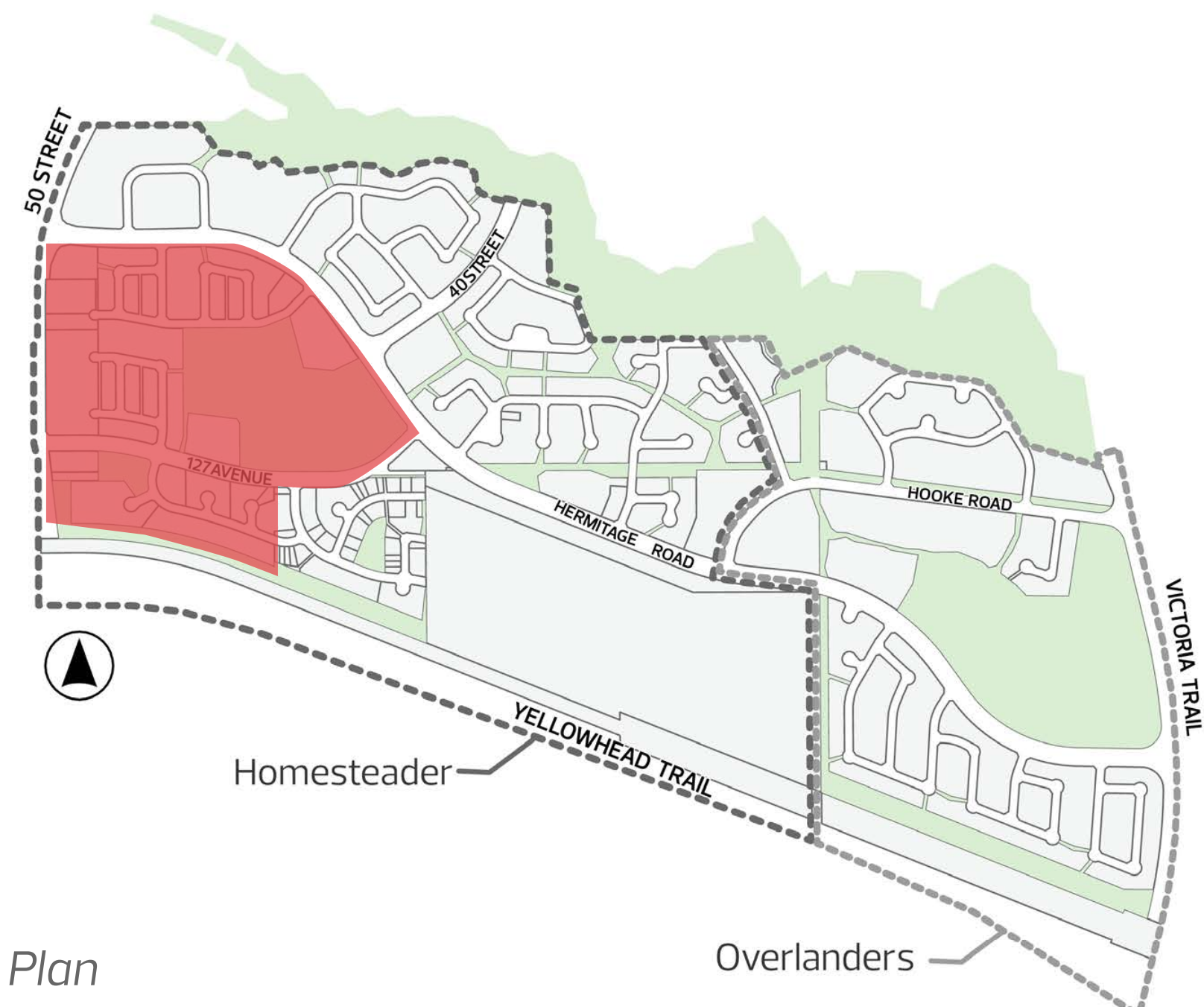
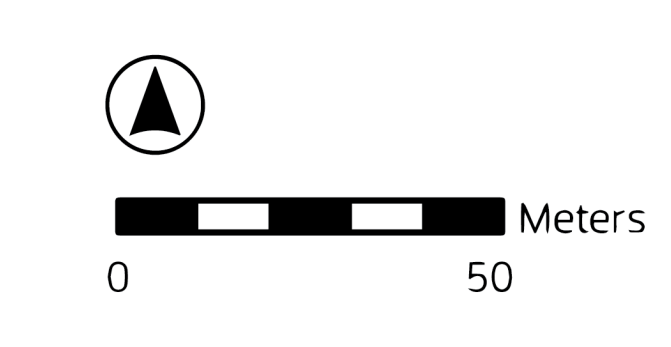


Final design plans | Area B

ADVISE



- LEGEND**
- Upgraded roadway
 - Grass boulevard
 - Existing sidewalk widened
 - Shared pathway
 - New trail connection
 - New City-owned tree
 - Existing trees to remain
 - Proposed removal of City-owned tree
 - Absorbant landscaping



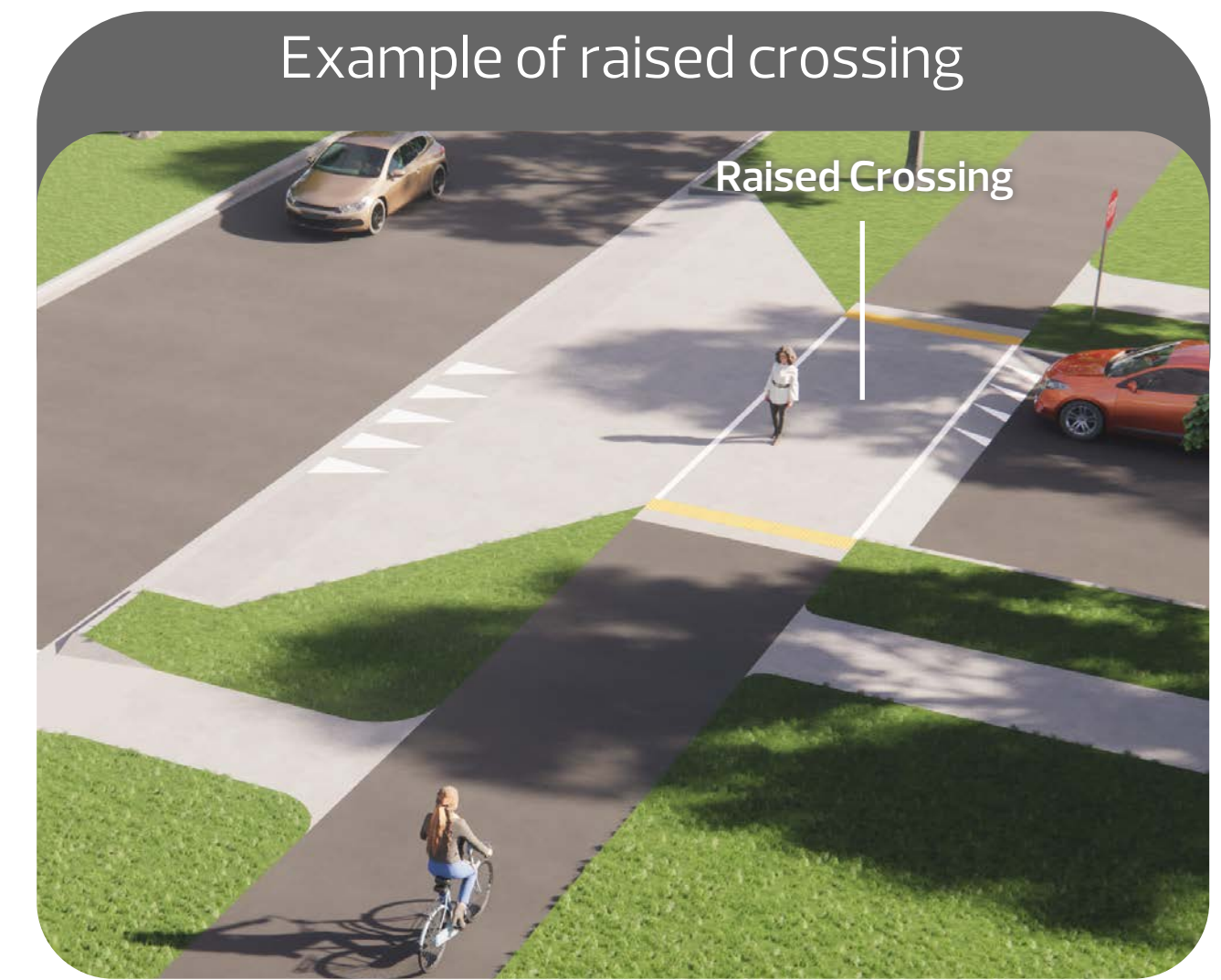
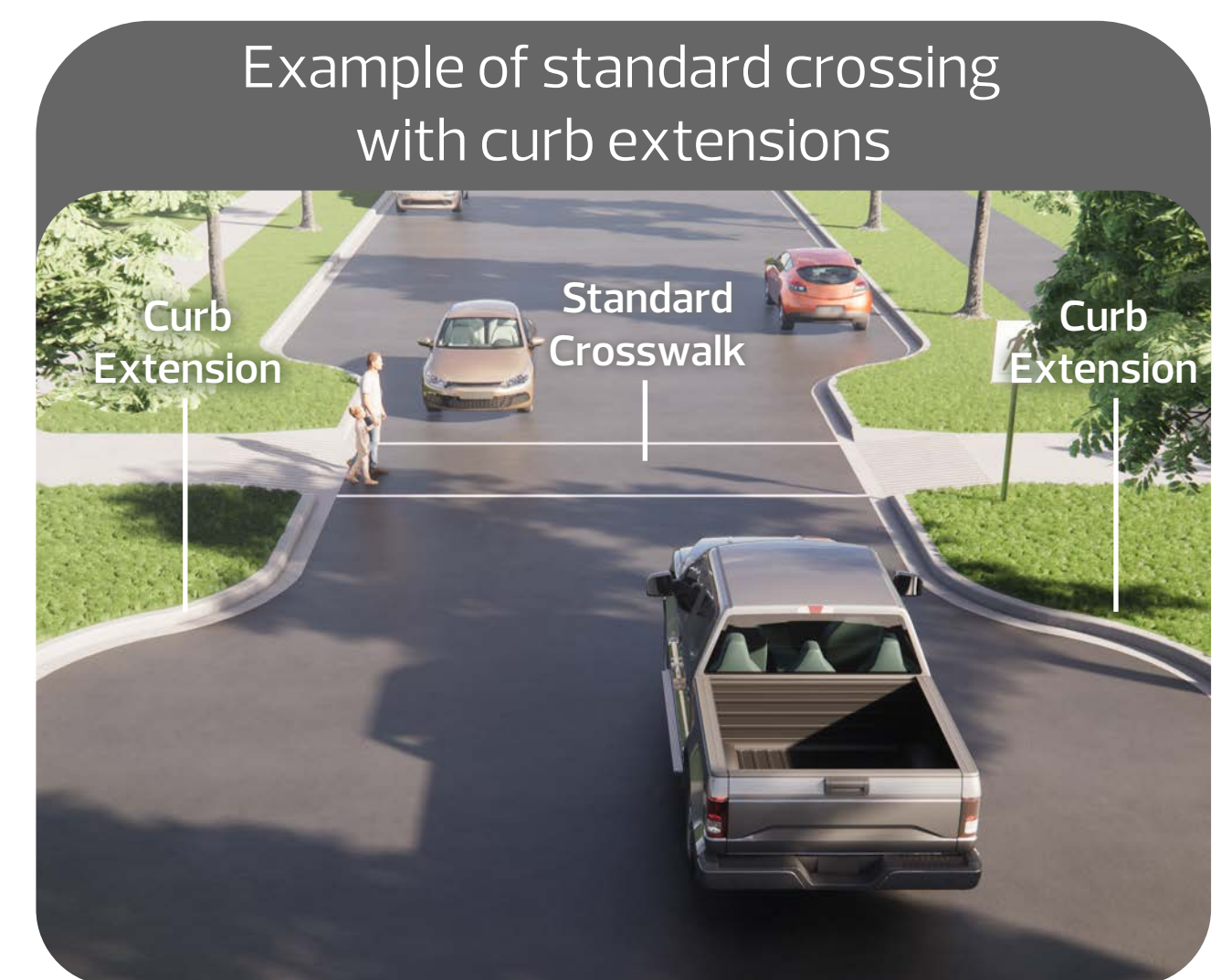
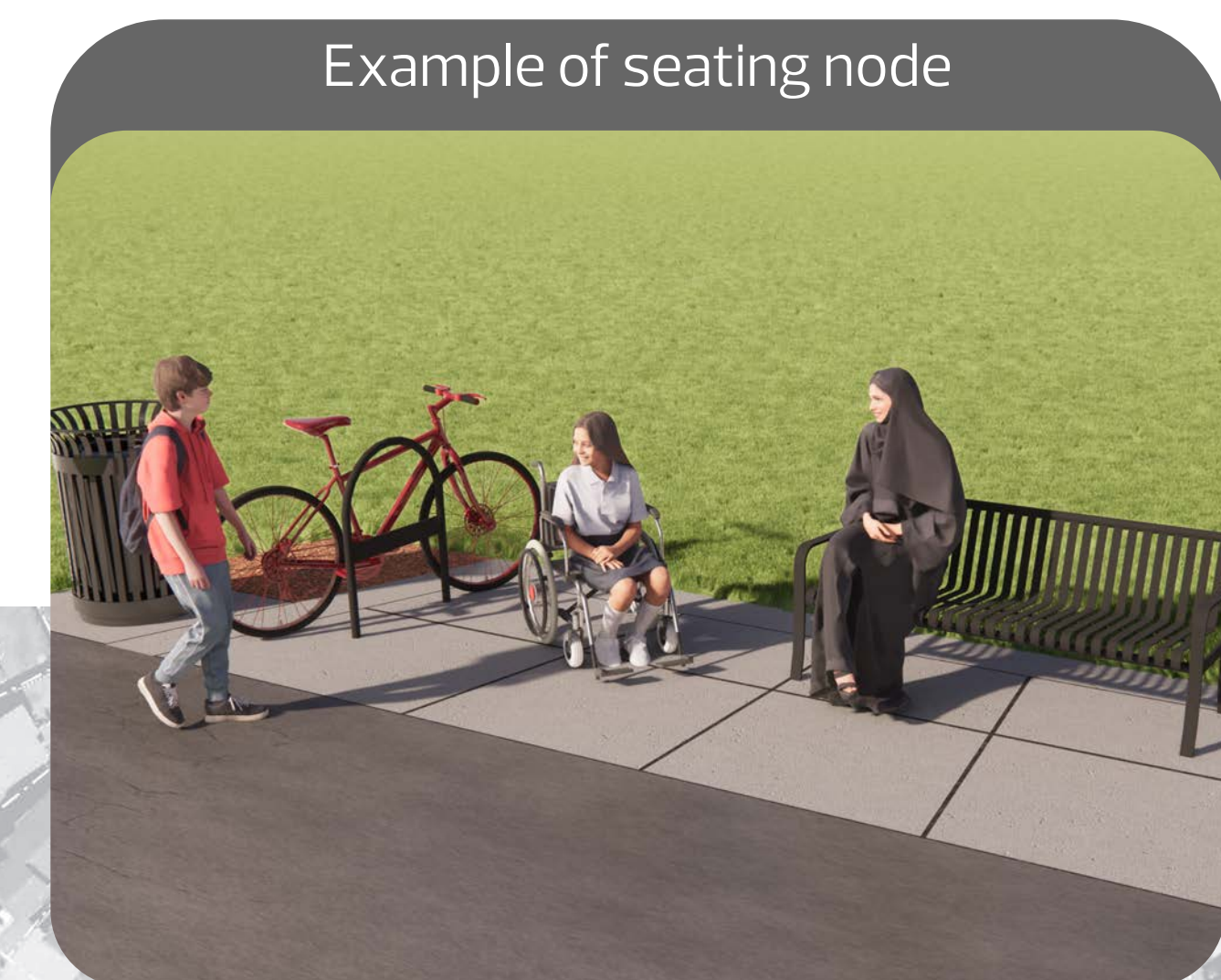
Learn more by going to: edmonton.ca/BuildingOverlandersHomesteader
 Designs are subject to approvals and funding.



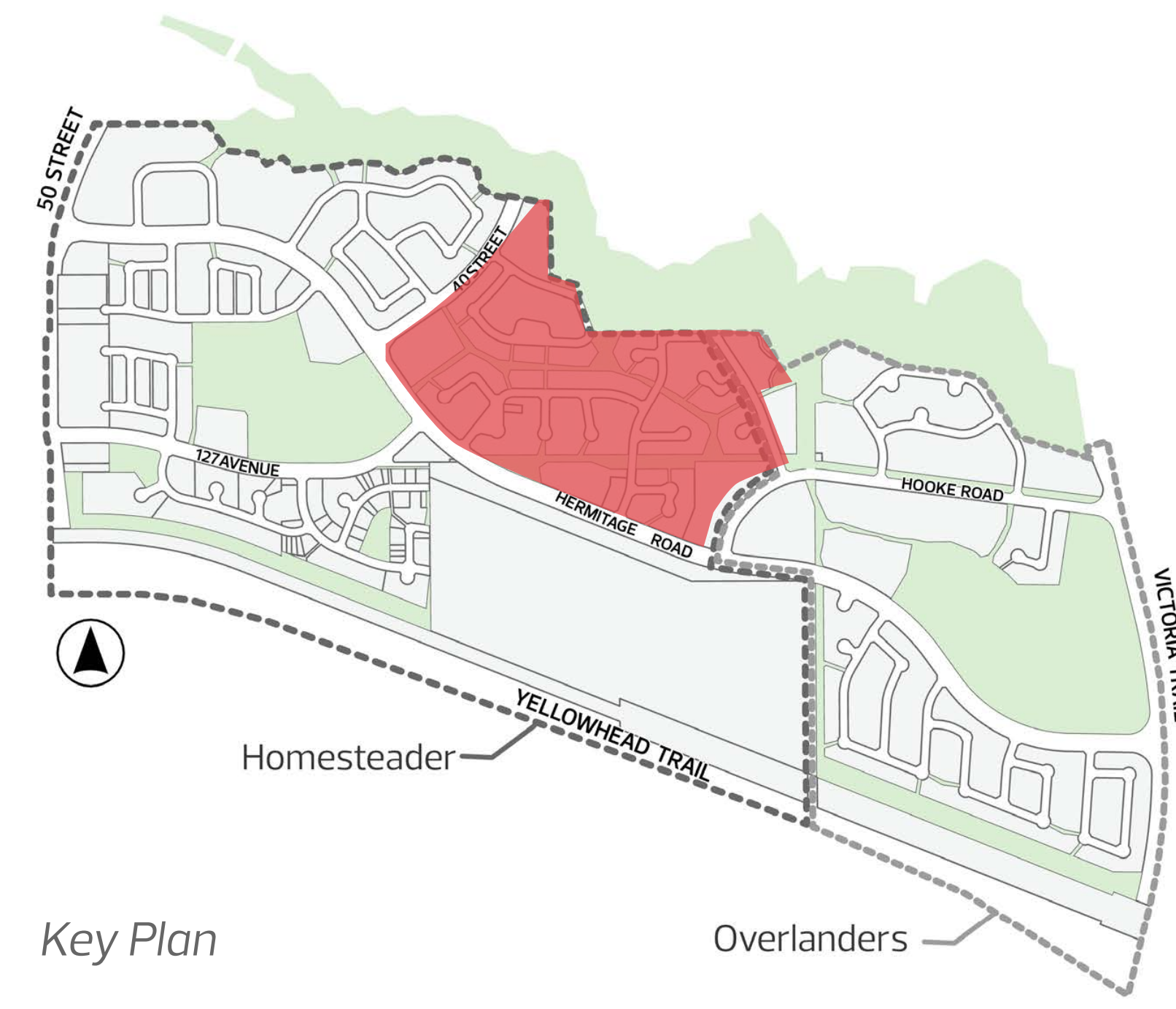
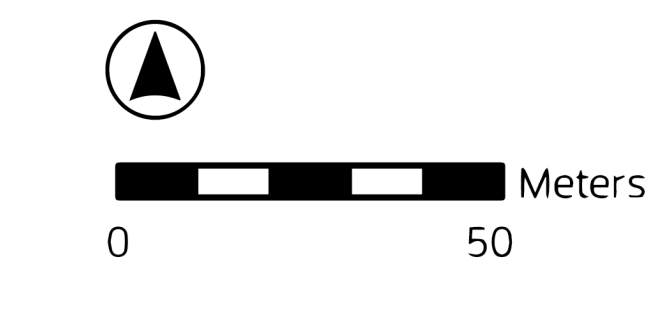
SHARE YOUR VOICE
 SHAPE OUR CITY

Final design plans | Area C

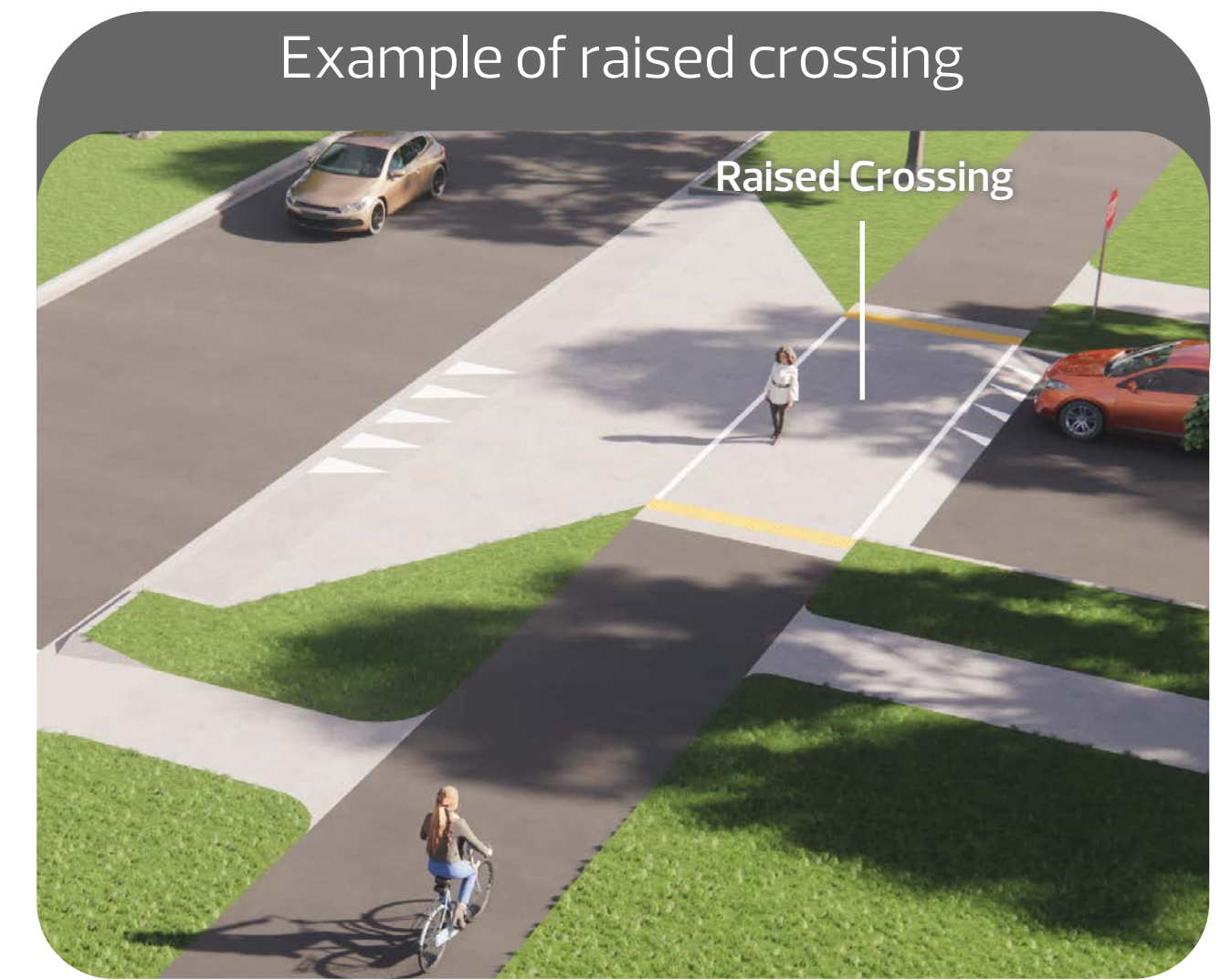
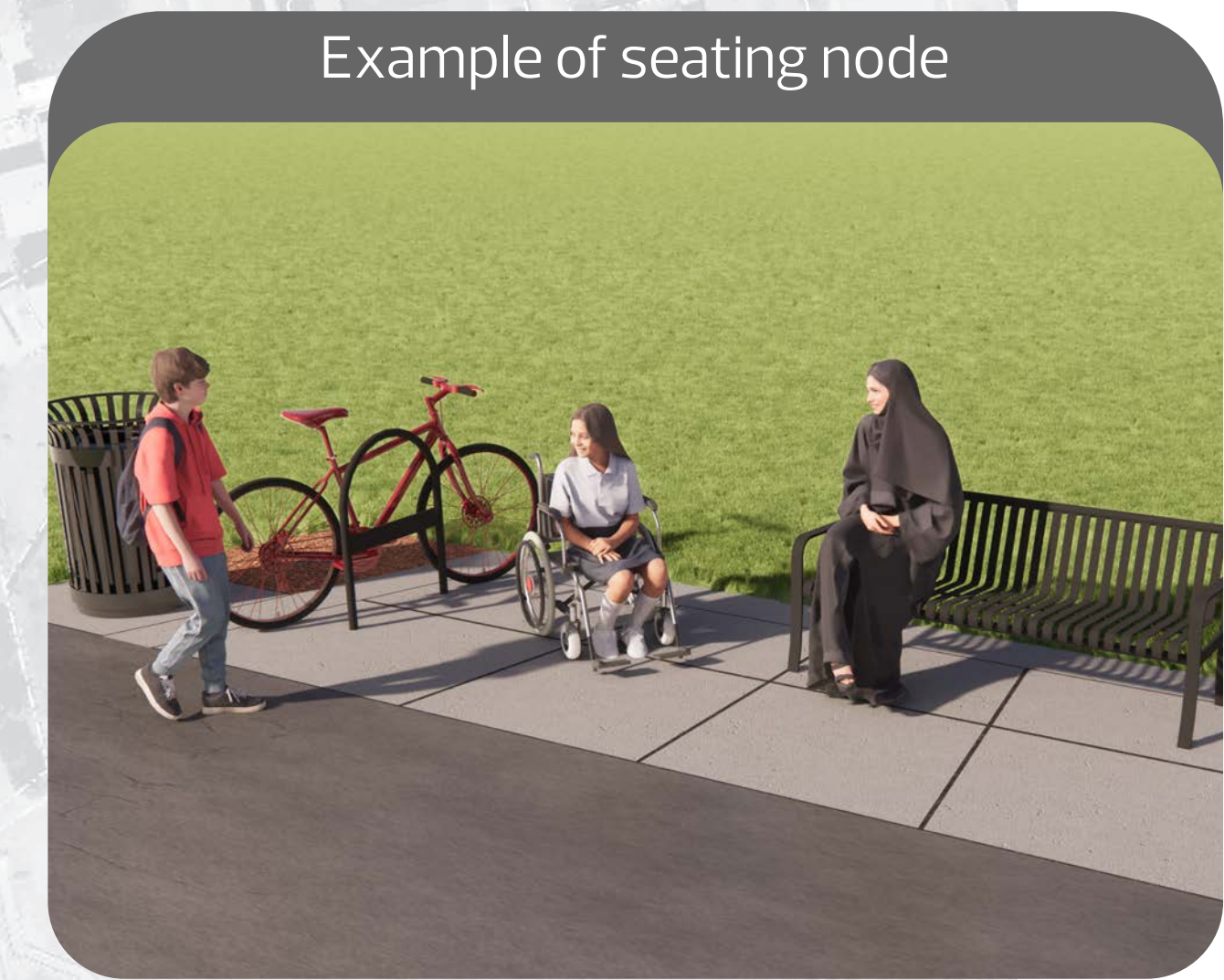
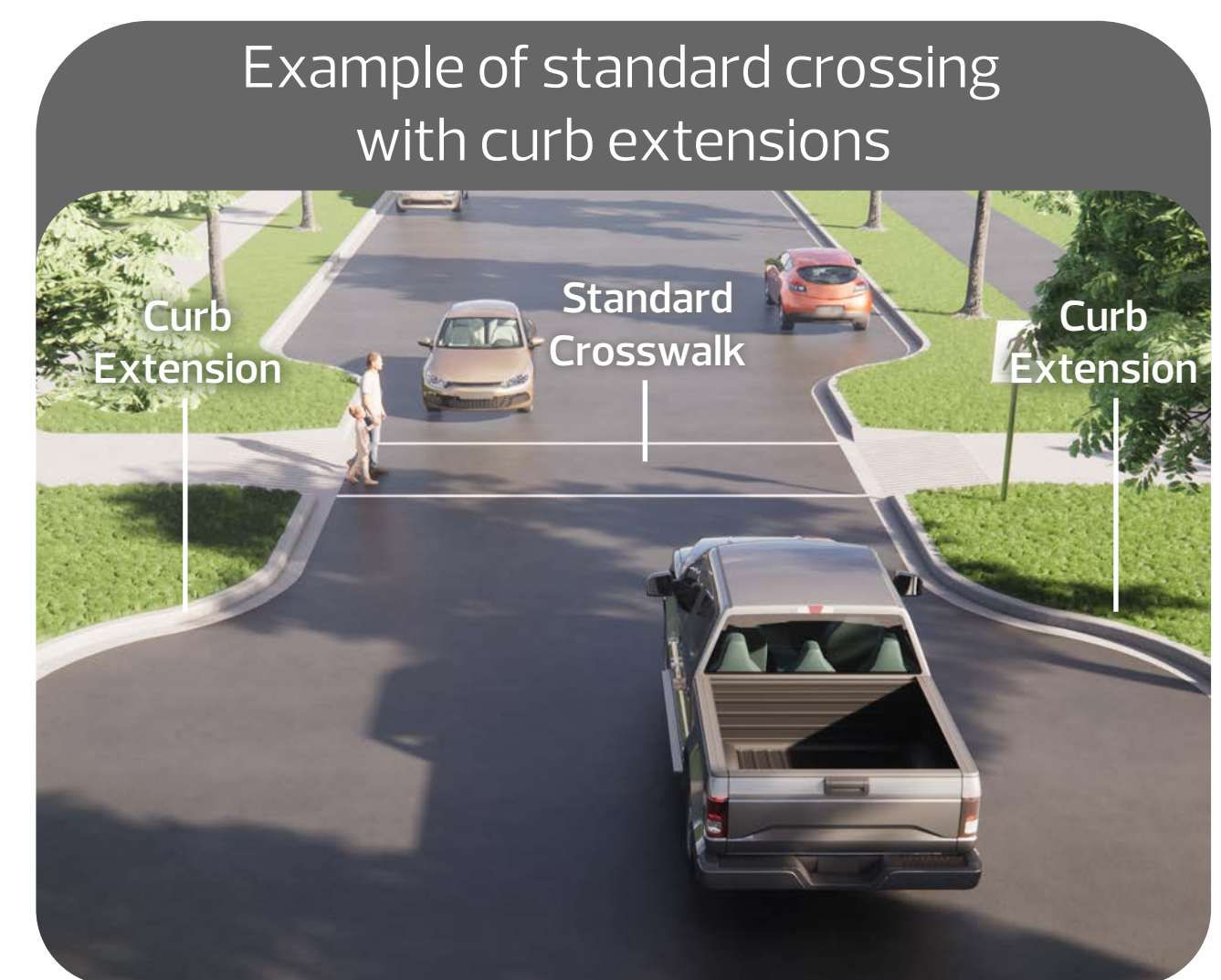
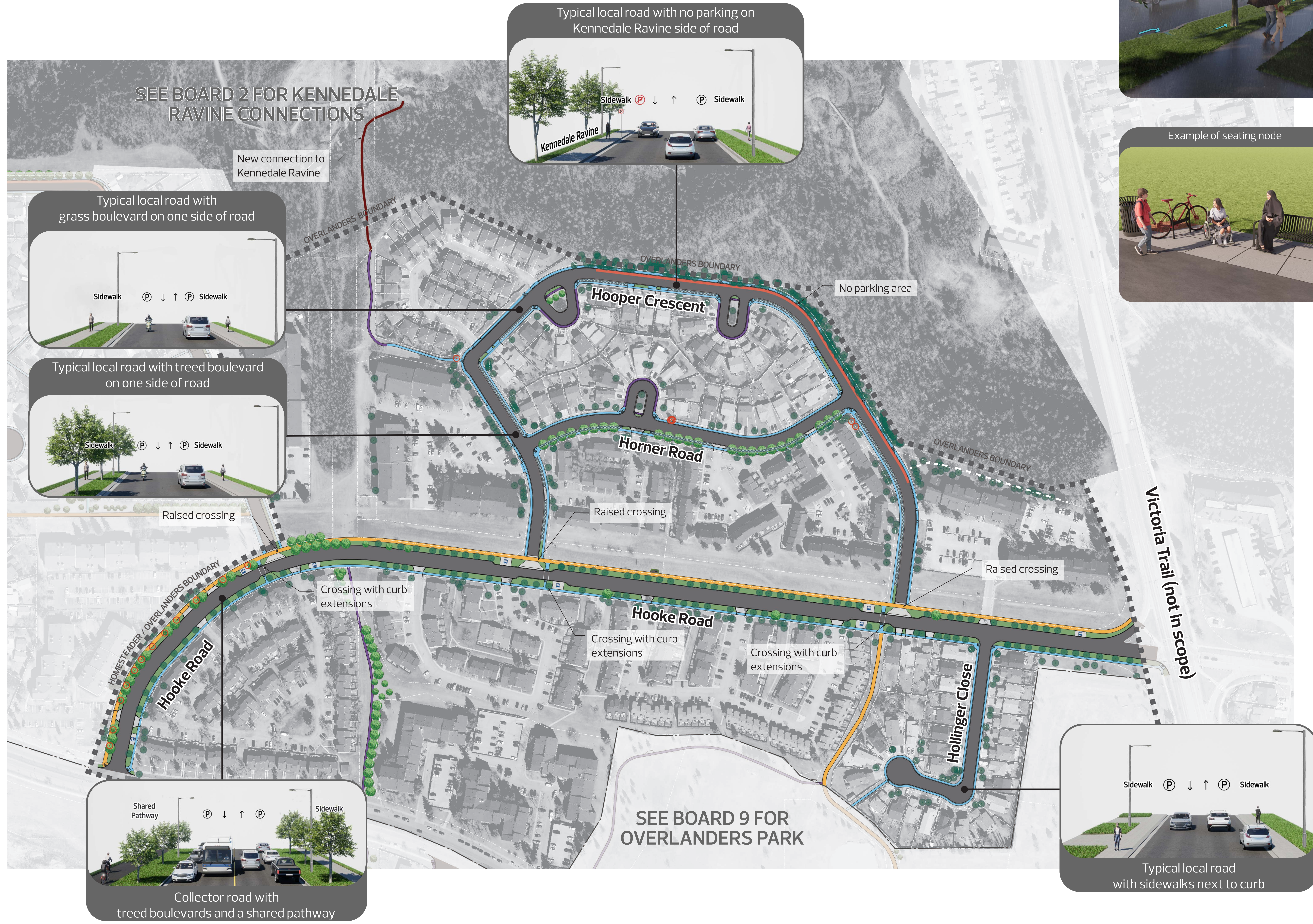
ADVISE



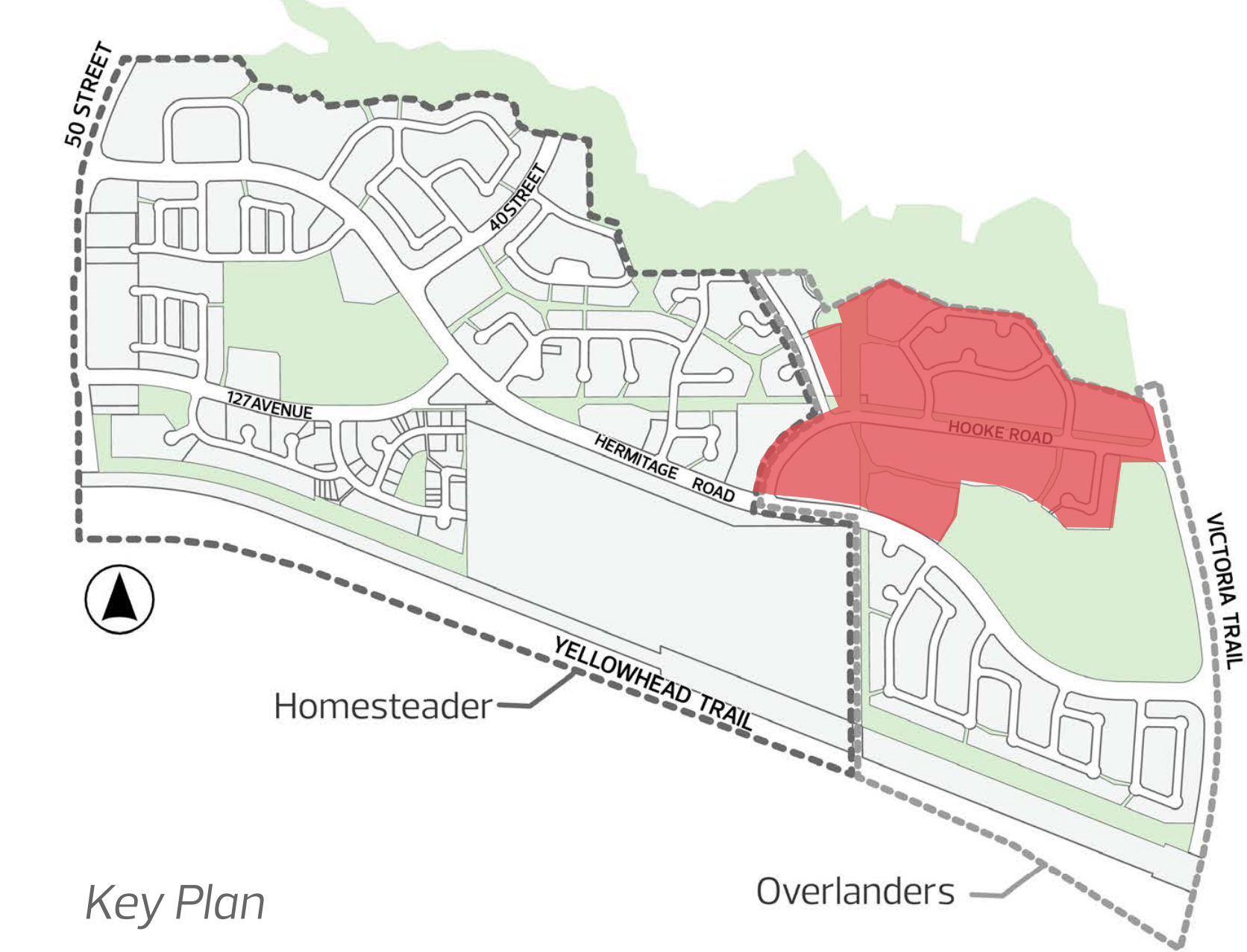
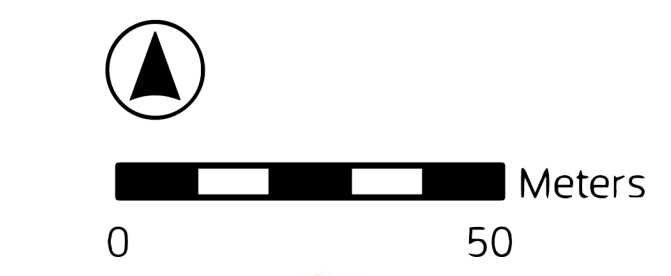
- LEGEND**
- Upgraded roadway
 - Grass boulevard
 - Existing sidewalk widened
 - New sidewalk
 - Shared pathway
 - New trail connection
 - No parking area
 - New City-owned tree
 - Existing trees to remain
 - Proposed removal of City-owned tree
 - Absorbant landscaping



Final design plans | Area D



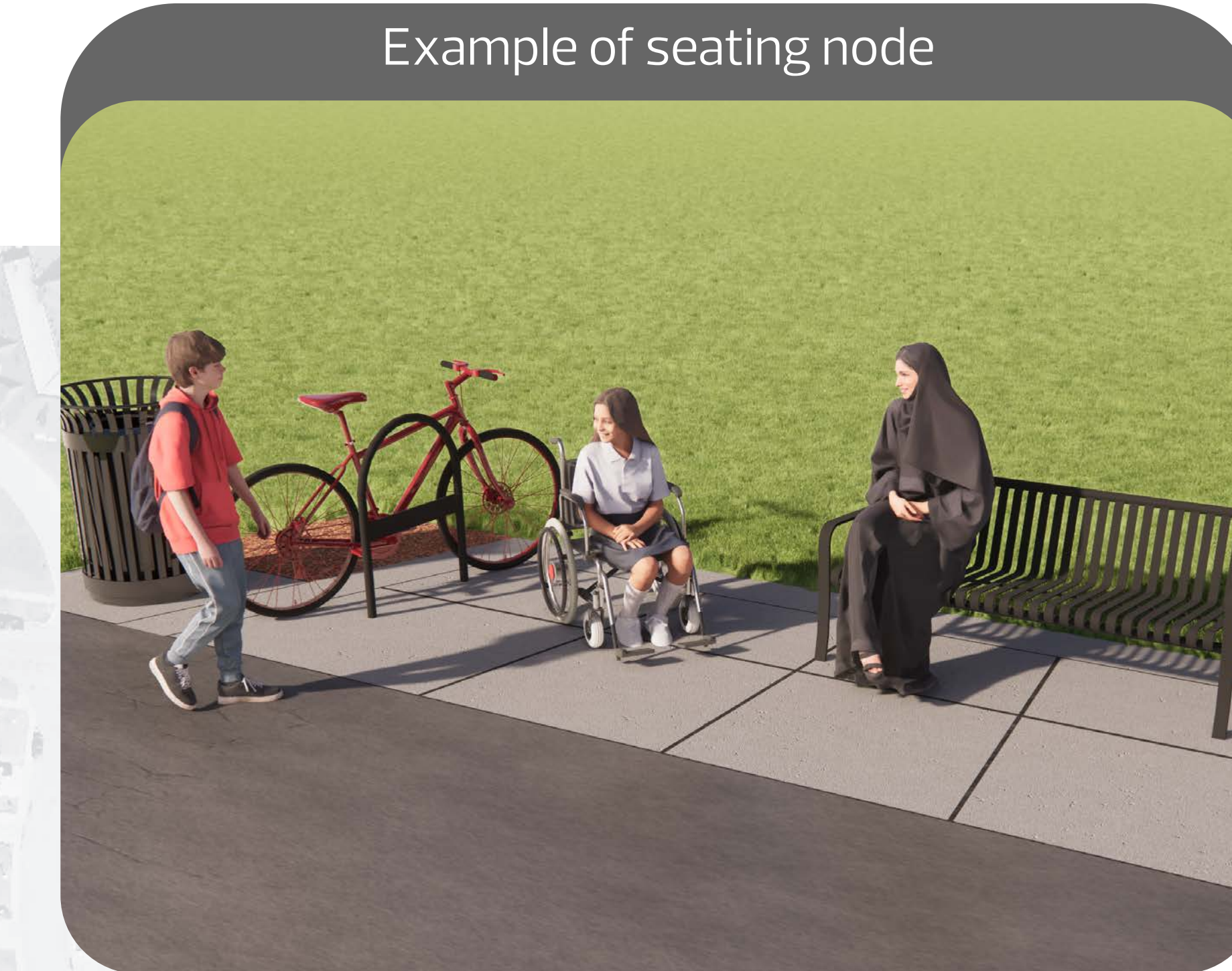
- LEGEND**
- Upgraded roadway
 - Grass boulevard
 - Existing sidewalk widened
 - New sidewalk
 - Shared pathway
 - New trail connection
 - No parking area
 - New City-owned tree
 - Existing trees to remain
 - Proposed removal of City-owned tree
 - Absorbant landscaping



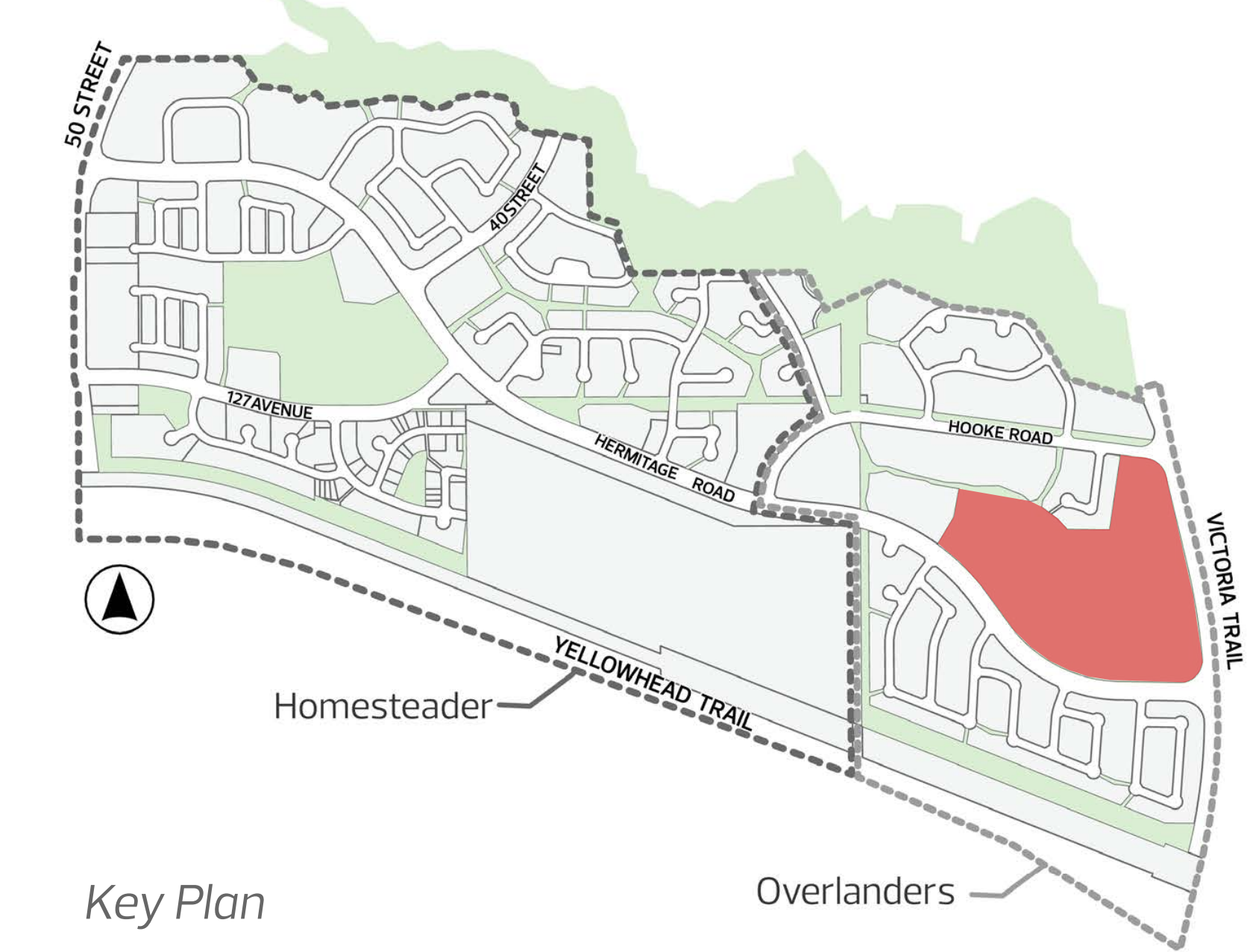
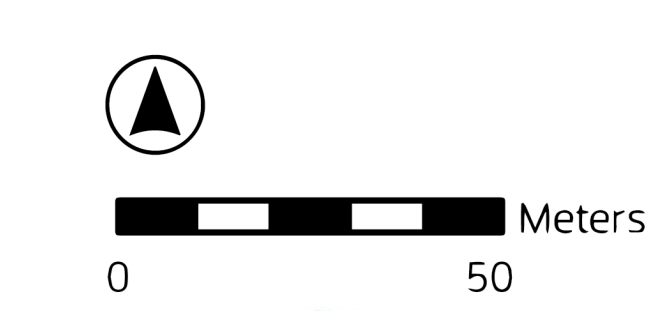
ADVISE

Final design plans | Area E

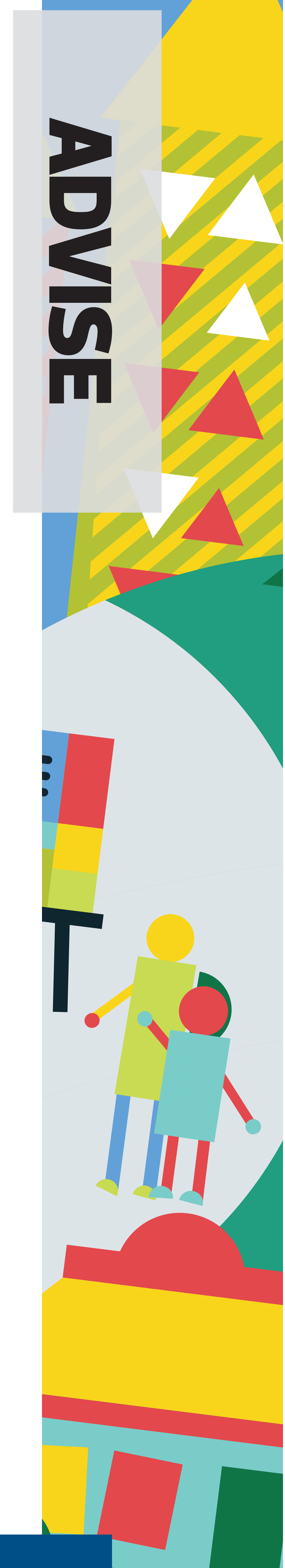
ADVISE



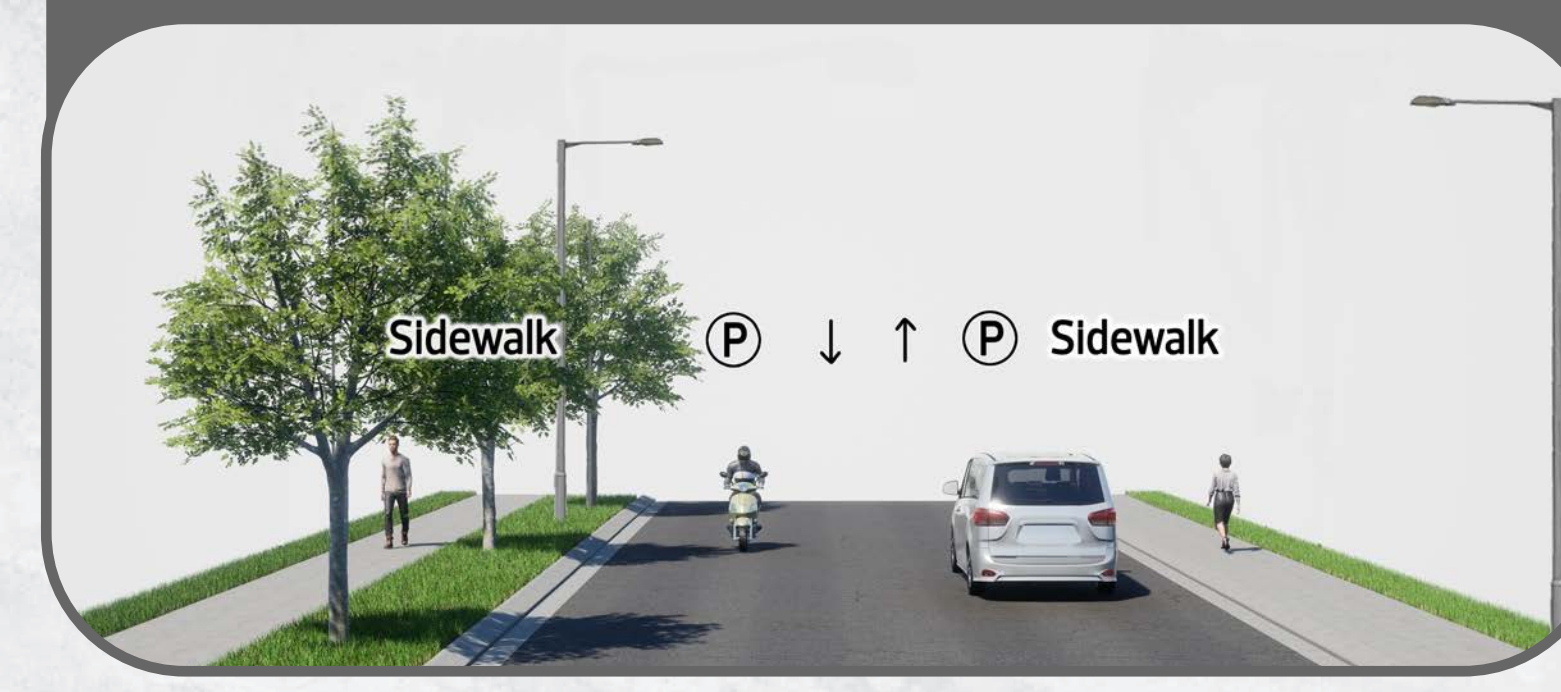
- LEGEND**
- Existing sidewalk widened
 - New sidewalk
 - Shared pathway
 - New City-owned tree
 - Existing trees to remain



Final design plans | Area F



Typical local road with treed boulevard on one side of road



VERTE SITE (NOT IN SCOPE)

Typical local road with sidewalks next to curb



Example of absorbant landscaping



- LEGEND**
- Upgraded roadway
 - Grass boulevard
 - Existing sidewalk widened
 - New sidewalk
 - New City-owned tree
 - Existing trees to remain
 - Proposed removal of City-owned tree
 - Absorbant landscaping

