



ADAPTABLE CURB EXTENSION

An adaptable curb extension extends into the roadway, either at crossings or midblock and helps to define the use of the road. They are typically placed to provide shorter crossing distances near pedestrian crossings or to help define where parking is permitted.

Photo of an adaptable curb extension on Allard Boulevard & Anthony Crescent, as part of the Allard Street Lab.

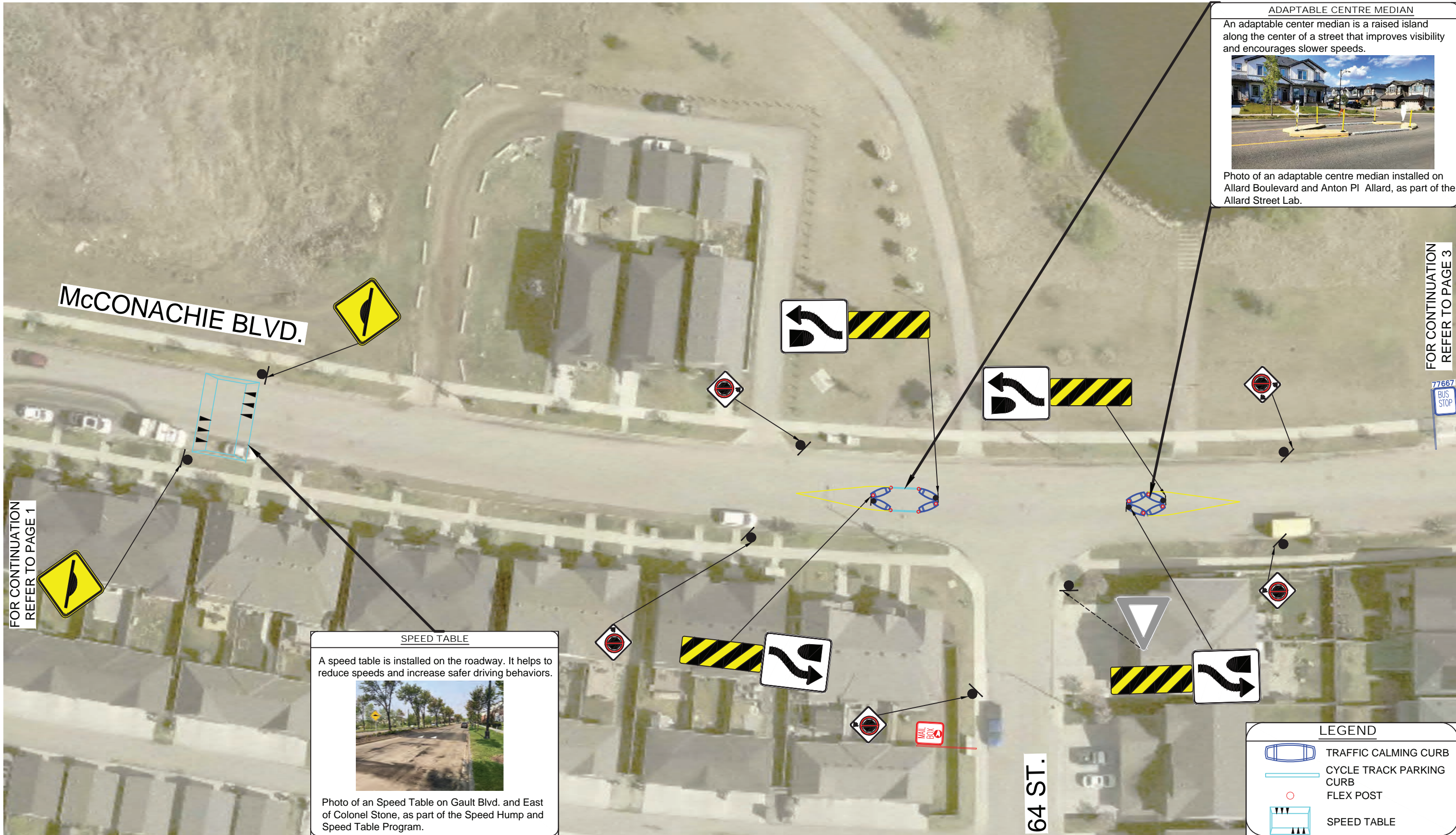


FOR CONTINUATION
REFER TO PAGE 2

LEGEND

- TRAFFIC CALMING CURB
- FLEX POST





ADAPTABLE CENTRE MEDIAN
 An adaptable center median is a raised island along the center of a street that improves visibility and encourages slower speeds.



Photo of an adaptable centre median installed on Allard Boulevard and Anton Pl Allard, as part of the Allard Street Lab.

SPEED TABLE
 A speed table is installed on the roadway. It helps to reduce speeds and increase safer driving behaviors.



Photo of a Speed Table on Gault Blvd. and East of Colonel Stone, as part of the Speed Hump and Speed Table Program.

LEGEND	
	TRAFFIC CALMING CURB
	CYCLE TRACK PARKING CURB
	FLEX POST
	SPEED TABLE

FOR CONTINUATION REFER TO PAGE 1

FOR CONTINUATION REFER TO PAGE 3

77667 BUS STOP





FOR CONTINUATION
REFER TO PAGE 2

FOR CONTINUATION
REFER TO PAGE 4

ADAPTABLE CURB EXTENSION

An adaptable curb extension extends into the roadway, either at crossings or midblock and helps to define the use of the road. They are typically placed to provide shorter crossing distances near pedestrian crossings or to help define where parking is permitted.



Photo of an adaptable curb extension on Allard Boulevard & Anthony Crescent, as part of the Allard Street Lab.

LEGEND

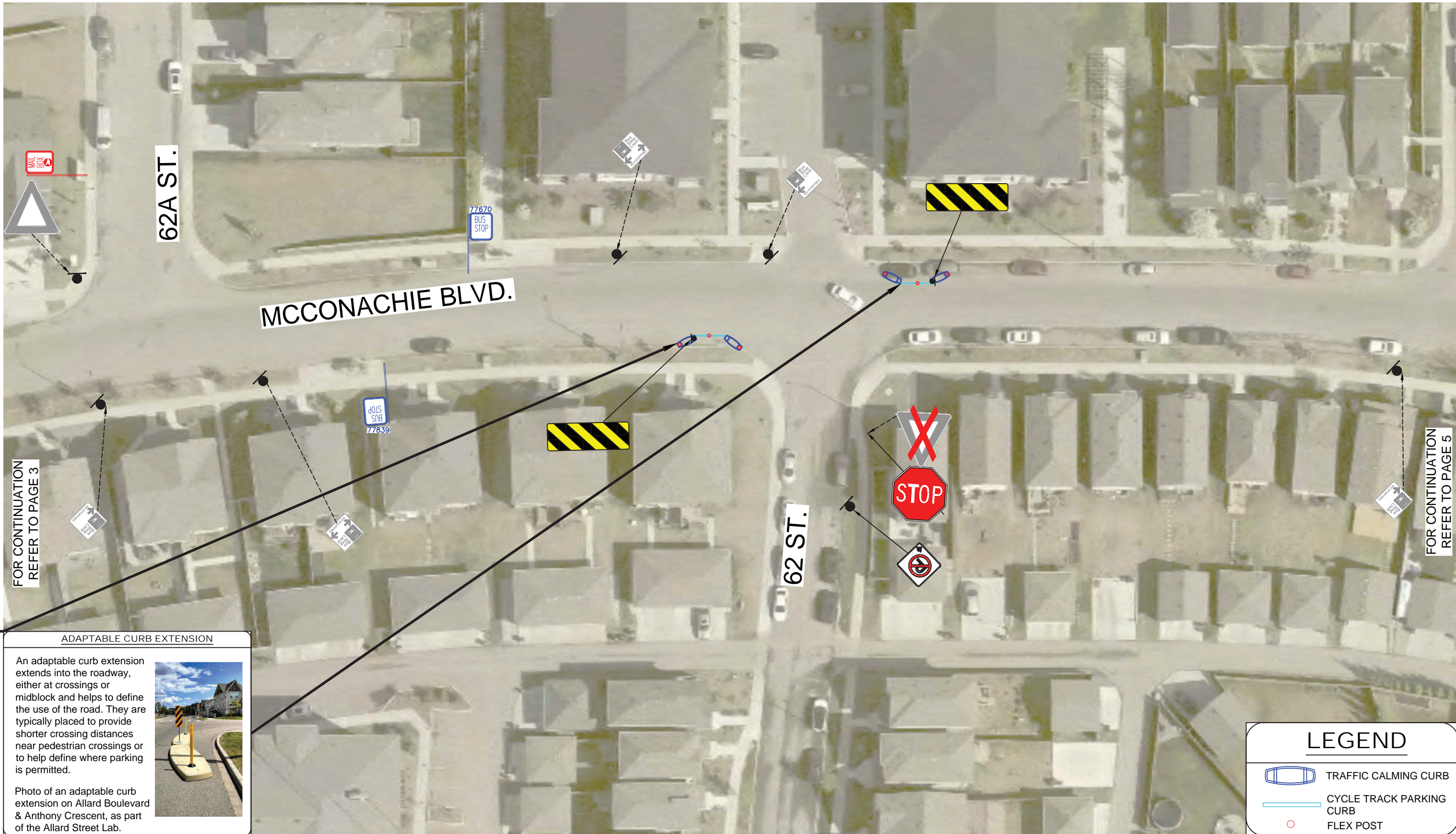


TRAFFIC CALMING CURB



FLEX POST





FOR CONTINUATION
REFER TO PAGE 3

FOR CONTINUATION
REFER TO PAGE 5

ADAPTABLE CURB EXTENSION

An adaptable curb extension extends into the roadway, either at crossings or midblock and helps to define the use of the road. They are typically placed to provide shorter crossing distances near pedestrian crossings or to help define where parking is permitted.







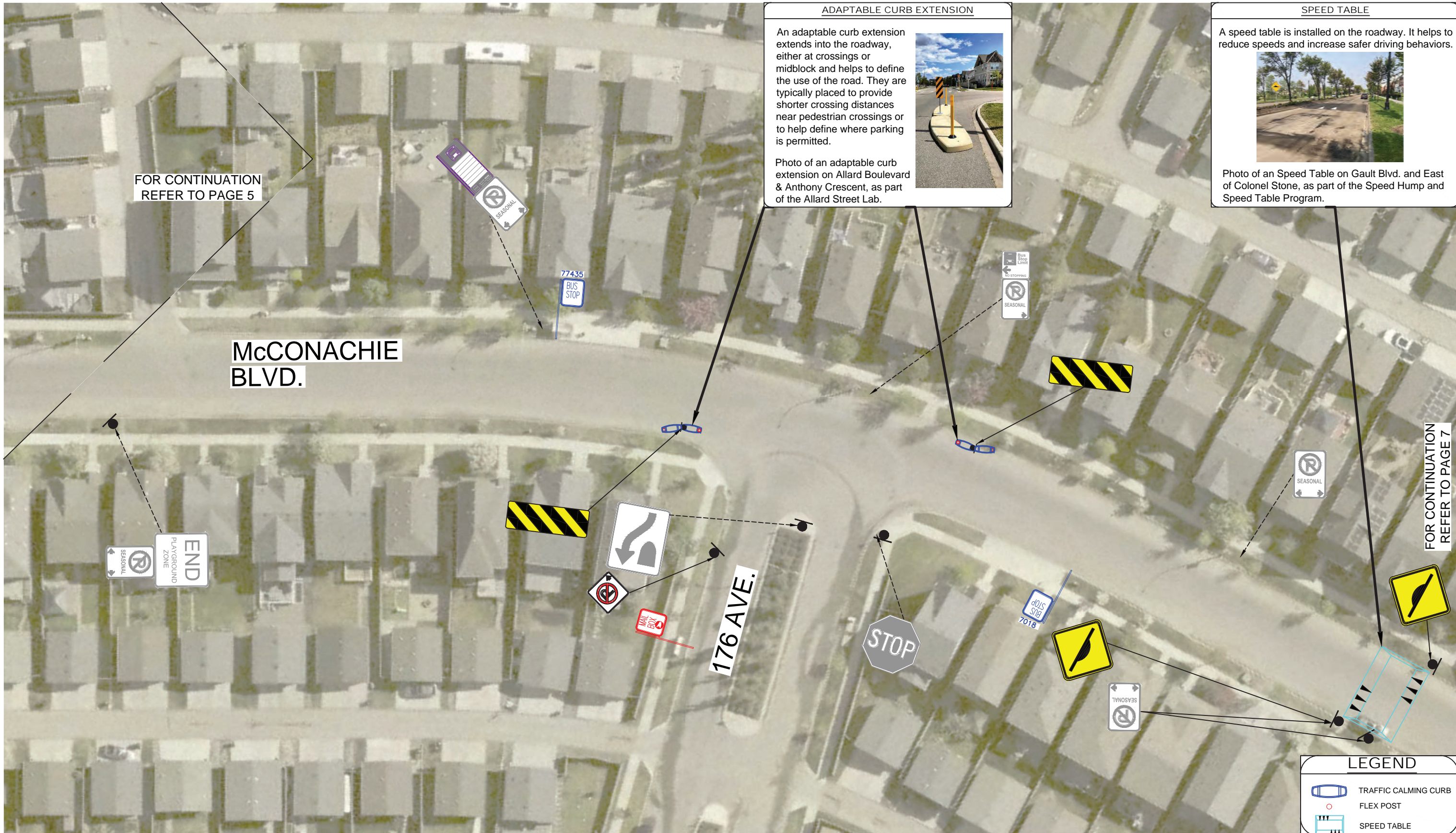
Photo of an adaptable curb extension on Allard Boulevard & Anthony Crescent, as part of the Allard Street Lab.

LEGEND

-  TRAFFIC CALMING CURB
-  CYCLE TRACK PARKING CURB
-  FLEX POST









FOR CONTINUATION
REFER TO PAGE 8

FOR CONTINUATION
REFER TO PAGE 6

