

What We Heard Report

La Perle and Belmead Neighbourhood Renewal

Building a Project Vision Together
Exploring Opportunities
January – February 2024

CREATE & REFINED

SHARE YOUR VOICE
SHAPE OUR CITY

Edmonton

Project overview

Neighbourhood Renewal construction in La Perle and Belmead is anticipated to begin in 2026. The City of Edmonton's Neighbourhood Renewal program will reconstruct roads, curbs, replace street lights, repair sidewalks, and where possible, complete active transportation links.

The new infrastructure will provide enhancements to the neighbourhood for the next 30 to 50 years.

Cost-sharing opportunities will be made available through the Local Improvement process for sidewalk reconstruction and decorative streetlight upgrades in the neighbourhood. Other opportunities to improve City-owned parks and public spaces will also be explored.

Neighbourhood Renewal Project Scope Map

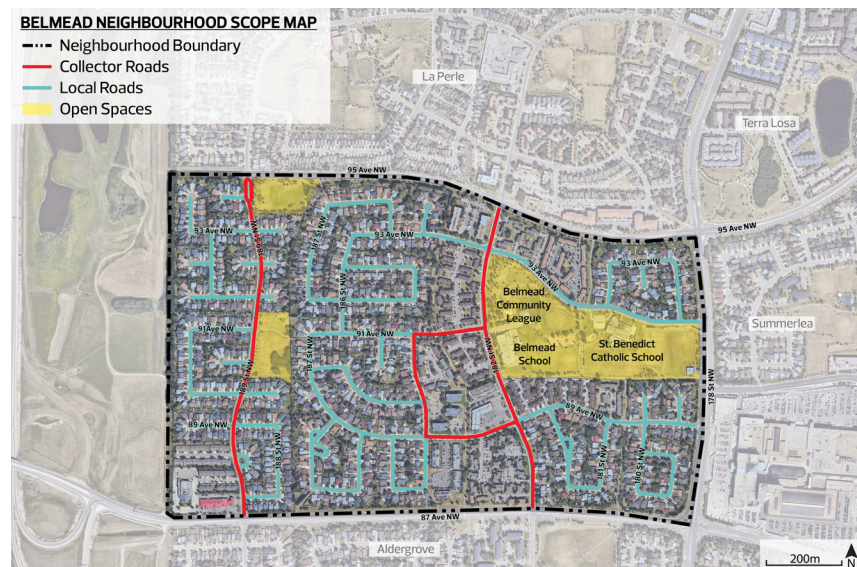
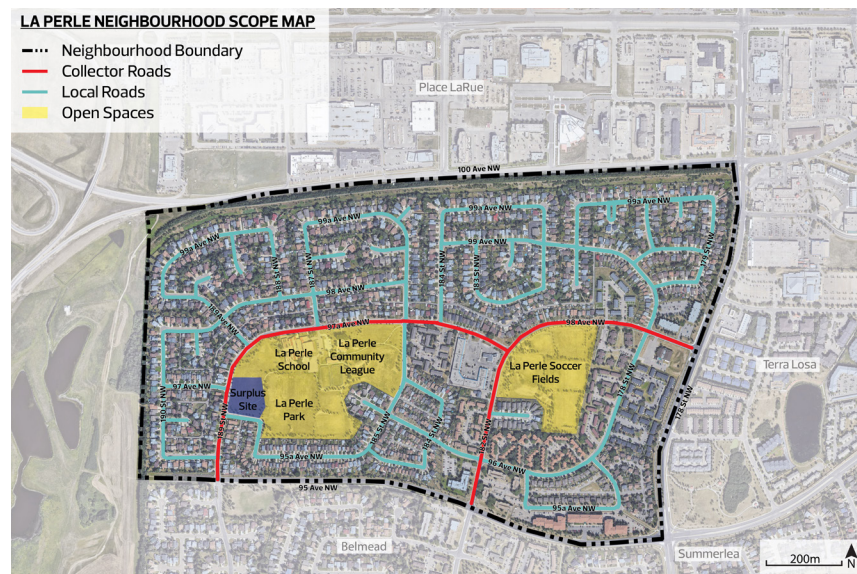
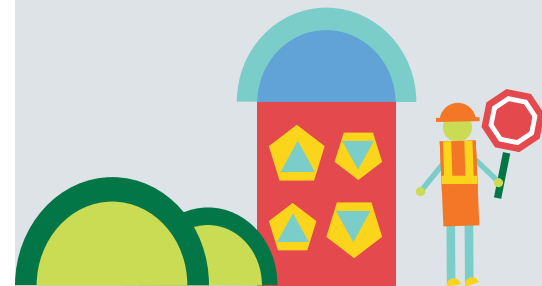


Table of Contents

Project overview	2
Neighbourhood Renewal Road Map	3
Public Engagement Spectrum	4
What we asked and how we asked	5
What we heard	6
Next steps	10



Neighbourhood Renewal Road Map

The Neighbourhood Renewal program follows the road map below. At each step, the Project Team shares with you how your input will inform the decisions being made.

This report highlights the input received during the **Building a Project Vision Together** and **Exploring Opportunities** stages between January and February 2024.



LEGEND



Public Engagement Spectrum

The City of Edmonton seeks input from citizens to help guide the project. The City's Public Engagement Spectrum below shows the four levels of influence that the public can have on decisions made by the City throughout the project.

In this phase of engagement, the public was invited to provide input that would help:

- + **CREATE** a Vision and set of Guiding Principles
- + **REFINE** the Project Team's knowledge of neighbourhood assets, opportunities and priorities

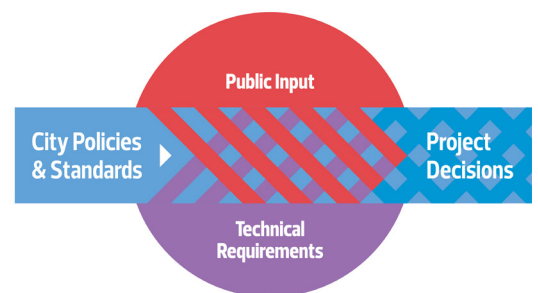
We commit to telling you how public input influences decisions according to the Public Engagement Spectrum.



Decision making process

City policies and programs such as the Complete Streets Design and Construction Standards, Safe Mobility Strategy and Winter City Strategy provide the overall direction for Neighbourhood Renewal designs. As each neighbourhood is unique, the Project Team asks for input from residents who live, work and play in the neighbourhood and considers technical aspects such as roadway widths and conflicts with utilities and trees to determine what will fit in the neighbourhood.

This process helps to ensure that the decisions we make are fiscally responsible, align with best practices, consider the existing public and private infrastructure, land uses and activities in the neighbourhood and result in the best outcomes for our city.



What we asked and how we asked

The La Perle and Belmead Neighbourhood Renewal Project Team organized the following opportunities for community members to **CREATE** a Vision and Guiding Principles, gather local knowledge to explore opportunities for Neighbourhood Renewal and share how the Project Team should best communicate with the neighbourhoods.



Survey

- + An online survey was available to the public from January 15 to February 5, 2024, asking participants to help **CREATE** a Vision and Guiding Principles and **REFINE** opportunities for La Perle and Belmead Neighbourhood Renewal

375 survey participants



Project web page

- + We asked residents to visit the project web page to access information about the project and learn more about La Perle and Belmead Neighbourhood Renewal

2,899 visits to edmonton.ca/BuildingLaPerleandBelmead



Events

Events shared information with residents and gathered feedback from the community to help us **CREATE** a Vision and Guiding Principles and **REFINE** opportunities for La Perle and Belmead Neighbourhood Renewal

Stakeholder events

- + A virtual workshop took place on January 23
- + An in-person drop-in open house was held at the Belmead Community League on January 25, and at the La Perle Community League on January 27
- + The Project Team met with the La Perle Community League, the Belmead Community League and the three schools in the neighbourhoods

Pop-ups

- + The Project Team was in La Perle and Belmead on Halloween in 2023 handing out candy and postcards to residents
- + 11 residents and/or partner groups contacted the Project Team through the online form or directly by phone or email to learn more about the project

129 in-person participants

24 online participants

Over 150 community conversations



How we communicated

- + 2,940 Starting the Conversation letters delivered
- + 70 Starting the Conversation postcards handed out
- + 5,349 Visioning and Exploring Opportunities postcards delivered
- + 5,349 newsletters delivered
- + 20 posters
- + 15 yard signs
- + 2 road signs
- + 158,350 social media ad views

What we heard

The following sections summarize what we heard from the in-person and online engagement events, online survey and through community conversations. The summary has been developed to reflect the relevancy, frequency and diversity of responses received based on the questions we asked residents.

Building a Project Vision Together

Ideas and insights were collected from participants to help us understand how people experience the neighbourhood today and what can be improved or added to **CREATE** a neighbourhood for the future.

A **Vision** is a short description that sets the direction for the community's future liveability.

Guiding Principles are ideas which inform how the Vision is applied to the neighbourhood design.

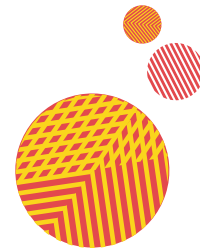
La Perle and Belmead participants shared the same values. Here is a summary of what we heard:

What are your three favourite things about living, working, playing and moving in and around the neighbourhood(s)?

- + A mature feel
- + Enjoyable green space and parks
- + Easy access to schools, stores and nearby amenities
- + Quiet neighbourhood with friendly residents

What are three challenges you face living, working, playing and moving in and around the neighbourhood(s) today?

- + Accessibility challenges with sidewalks and curbs
- + Lack of lighting along sidewalks and pathways
- + Traffic congestion due to nearby construction
- + Road condition challenges
- + Traffic flow concerns
- + Maintaining a safe neighbourhood feel



Thinking about a renewed La Perle and Belmead, what would you like to see changed? Upgrades will be required to support the community for the next 30 to 50 years.

- + Improve neighbourhood amenities, such as benches, pathways, water stations, and additional greenery
- + Enhance sidewalks and curbs to be accessible and safe for all ages and abilities
- + Repair and enhance roadways for easier traffic flow
- + Create better connections for people who walk and roll to destinations within and surrounding the community
- + Consider more recreational opportunities and usable park spaces for all ages, such as community gardens, a dog park, another playground
- + Improve lighting in parks and along walking paths

The Project Team will use this input to **CREATE** a proposed Vision and Guiding Principles for the La Perle and Belmead Neighbourhood Renewal project. This will be shared with the community to gather feedback during the next engagement stage.



Exploring Opportunities

The following section includes a summary of what we heard throughout all of the engagement opportunities. Residents shared ideas and thoughts on various issues and opportunities which could be considered for the La Perle and Belmead Neighbourhood Renewal project.

The following key themes were identified by residents:

Driving

- + Residents in both La Perle and Belmead currently experience poor and outdated road conditions including potholes, drainage issues and curb grades
- + Residents are currently experiencing traffic congestion around 189 Street due to the LRT construction influencing people driving to cut through both neighbourhoods
- + Residents experience parking issues, particularly around the schools
- + People would like safer driving conditions and suggested adding more signage, lighting, and traffic signals to better control traffic flow
- + People would like additional crosswalks and pedestrian crossings to address safety concerns from increased traffic congestion

Biking

- + People prefer to ride a bike separated from traffic and are generally in favour of adding bike paths
- + Residents would like to see more shared pathways for those who bike, walk and roll
- + Residents requested better connections to other areas of the city for people who bike
- + Residents would like better curb grades and maintained infrastructure throughout the neighbourhoods
- + Some residents expressed that no additional infrastructure is needed for people who bike

Walking and rolling

- + Residents experience poor walking and rolling conditions (cracks, missing sidewalks, poor maintenance, narrow sidewalks and lack of curb extensions)
- + People shared that more lighting would help people feel safer walking and rolling on sidewalks and paths
- + Residents would like better curb grades and maintained infrastructure throughout the neighbourhoods to support accessibility for all ages and abilities
- + People would like more and improved pathway connections

Parks and open spaces

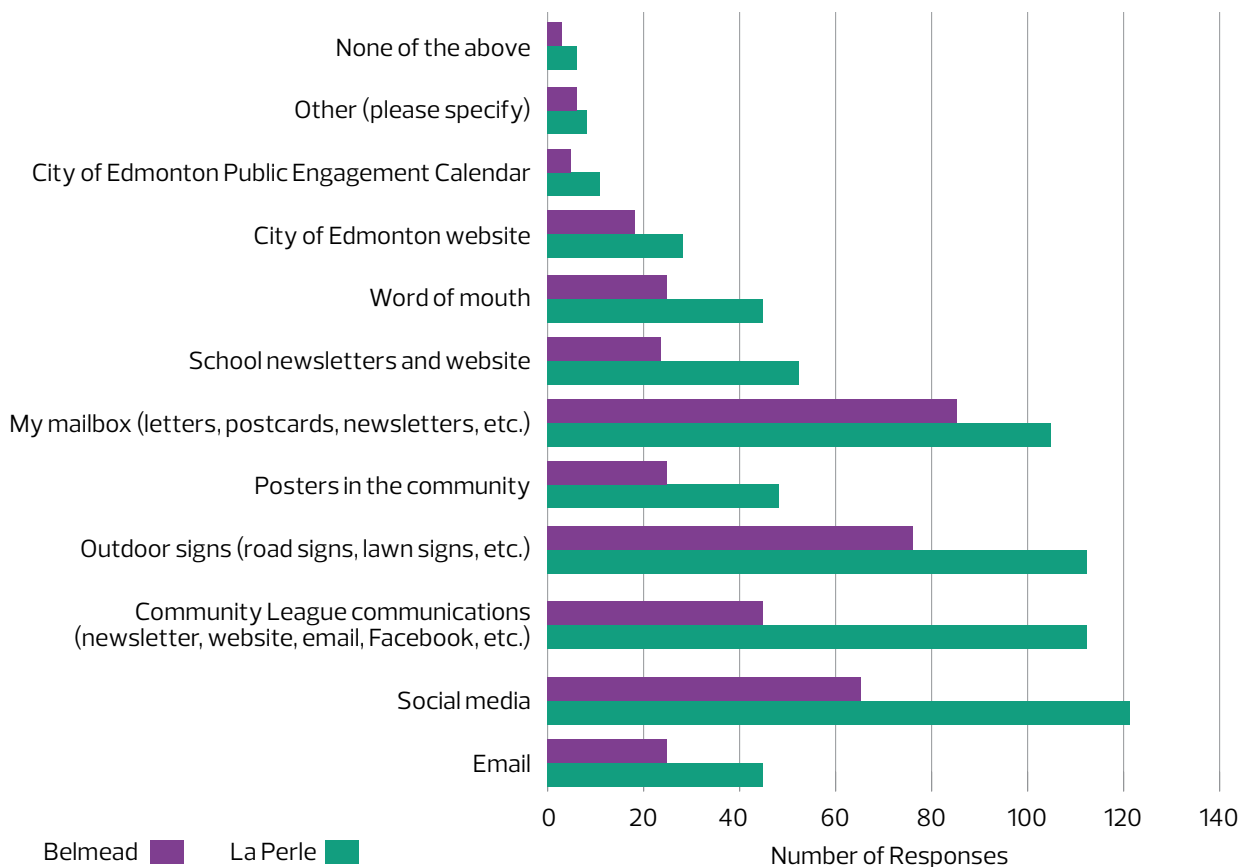
- + Residents would like improved amenities (benches, lights, shelters and a fenced dog park area)
- + Respondents would like to see more recreational amenities and activities such as play structures and age-friendly design
- + People would like more trees, greenery, etc. and greater use of unused spaces
- + Respondents would like to see more safety features in parks
- + Respondents would like to see increased maintenance of green spaces
- + Residents would like to see more areas to gather publicly and recreational areas that are accessible and inclusive

Communication preferences

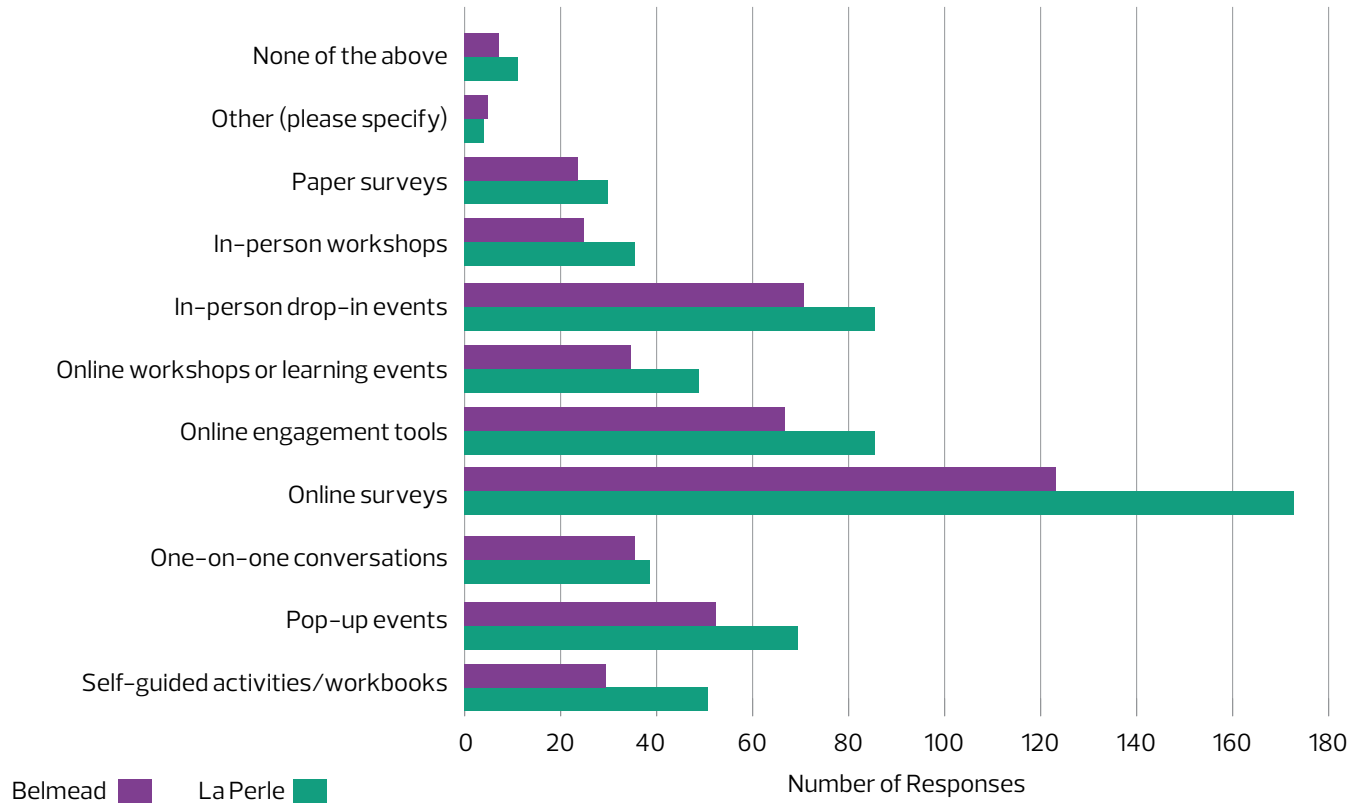
Key insights

- + Physical mail is an important communication channel for community members in La Perle and Belmead
- + Other ways that people in La Perle and Belmead share and learn about information include the Community League websites and social media channels, outdoor signs and the City of Edmonton's social media channels
- + Many community members prefer online surveys and online tools for engagement, as well as in-person drop-in events and pop-ups
- + Certain community members require engagement and communication opportunities outside of standard business hours

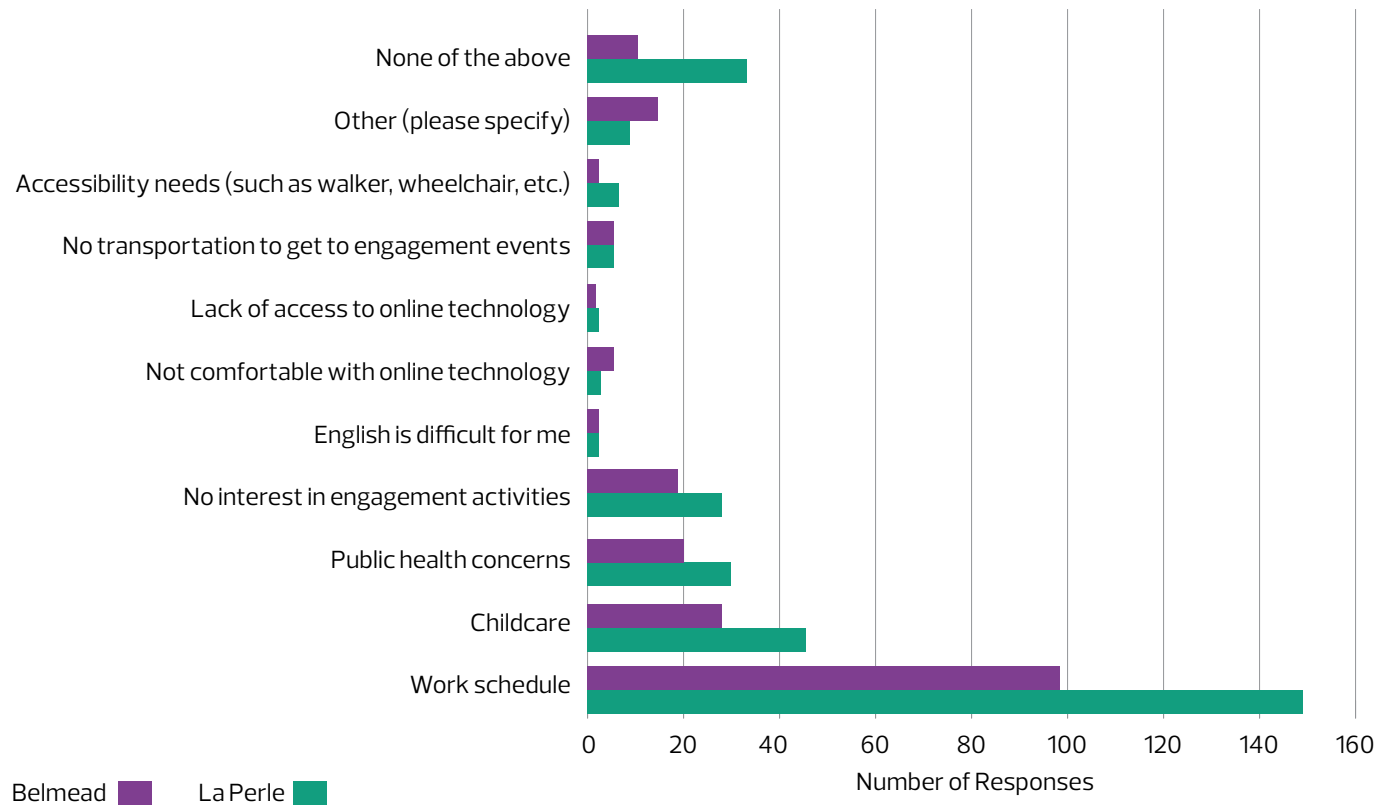
How do you learn about events and activities happening in the neighbourhood(s)?
Choose all that apply.



How do you prefer to participate in engagement activities?
Choose all that apply.



Is there anything that would impact your decision to participate in engagement activities?
Choose all that apply.



Next steps

Thank you to all who shared their input during the **Building a Project Vision Together** and **Exploring Opportunities** stages of engagement.

In spring 2024, the public will be invited to the **Exploring Options and Tradeoffs** stage of engagement for La Perle and Belmead Neighbourhood Renewal. The Project Team will return to the community to confirm the Vision and Guiding Principles and explore options and tradeoffs to understand the community's preferences. During this stage, we will invite you to provide feedback on the design options and to share insights to help **REFINE** the options.

Information will also be provided about cost-sharing opportunities for decorative street lights and sidewalk reconstruction through the Local Improvement process.

For more information regarding the La Perle and Belmead Neighbourhood Renewal, upcoming public engagement activities and to subscribe for project updates, please visit edmonton.ca/BuildingLaPerleandBelmead.





Working together to make the most out of your neighbourhood.

This is your city and your neighbourhood. We want to understand how you experience your neighbourhood and ask for your input on what we might do to make it better. We will engage and work with you on the renewal of roads, sidewalks, street lights and park spaces. We will also promote other community opportunities to enhance how people live and interact in your neighbourhood. We commit to being open and transparent about how your input is used. Let's make the most out of your neighbourhood.

SHARE YOUR VOICE
SHAPE OUR CITY

Edmonton