

La Perle and Belmead Neighbourhood Renewal

Newsletter Issue #3 – November 2024

Edmonton

The City's Neighbourhood Renewal program will reconstruct roads and curbs, replace street lights, repair sidewalks and where possible, complete active transportation links in La Perle and Belmead. Other opportunities to improve City-owned parks and public spaces will also be explored.

Cost-sharing opportunities will be made available through the Local Improvement process for sidewalk reconstruction and decorative street light upgrades in the neighbourhood. The new infrastructure will provide enhancements to the neighbourhoods for the next 30 to 50 years.

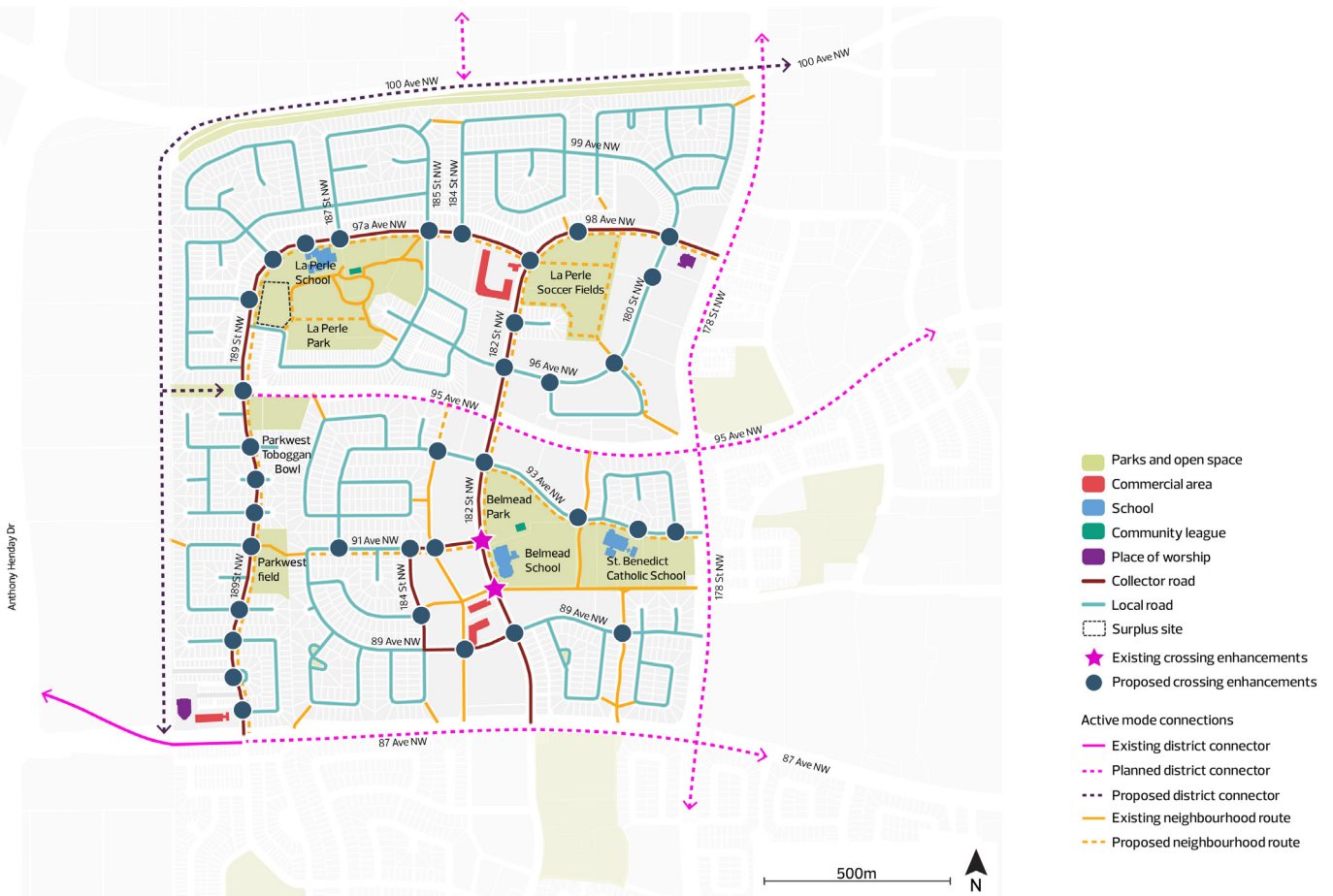
This newsletter is meant to inform you about the status of Neighbourhood Renewal in La Perle and Belmead including when and how you can join the conversation. The Project Team has finalized a design that meets current City standards, policies and technical considerations and considers public input. The design will show you how each proposed improvement for walking, biking, driving, rolling, playing and gathering, works together as a system to provide the best neighbourhood experience for all users. Planning for the Neighbourhood Renewal of La Perle and Belmead has been under way since October 2023 and we look forward to continuing working with you to understand your neighbourhood needs and refining the Neighbourhood Renewal design.

What's inside

Draft design overview	2
Get involved!	2
Neighbourhood Renewal Road Map	3
How decisions are made.....	4
Draft design highlights.....	5
Neighbourhood Renewal public engagement.....	6
What we heard	7
La Perle and Belmead Vision and Guiding Principles.....	8
What you need to know about Local Improvements.....	9
Decorative street lights	10
Nearby projects	11



Draft design overview



Get involved!

Community Feedback on Draft Design

Tuesday, November 5 to Friday, November 29

From November 5 to November 29, you are invited to join us for the **Community Feedback on Draft Design** stage of engagement for the La Perle and Belmead Neighbourhood Renewal. During this stage, the Project Team will engage with the community by sharing the draft design of neighbourhood renewal and invite your feedback and insights to help **REFINE** the draft design and ensure it reflects the Vision and Guiding Principles for Neighbourhood Renewal in La Perle and Belmead.



Learn about and share your feedback on the draft design:

The draft design will be available for review on the project website at edmonton.ca/BuildingLaPerleandBelmead. Watch the website or sign up for our electronic mail-out to be notified when it becomes available.

+ Review the draft design online

+ Complete the online survey

- Available from November 5 to November 29

+ Meet the Project Team at a drop-in event

- Thursday, November 14, 6 p.m. to 8 p.m.
Belmead Community League, 9109 182 Street NW
- Saturday, November 23, 1 p.m. to 3 p.m.
La Perle Community League, 18611 97a Ave NW

Scan me!



To learn more and share your feedback, scan the QR code or visit edmonton.ca/BuildingLaPerleandBelmead

No online access?

No problem! If you do not have internet access or if you prefer to engage in a different manner, the Project Team is available to schedule one-on-one phone calls with interested participants to share information, answer questions and gather input. A paper copy of the Draft Design and survey can also be provided. Email chase.gingles@edmonton.ca OR call **311** and ask to be connected with a Project Team member by phone.

Neighbourhood Renewal Road Map



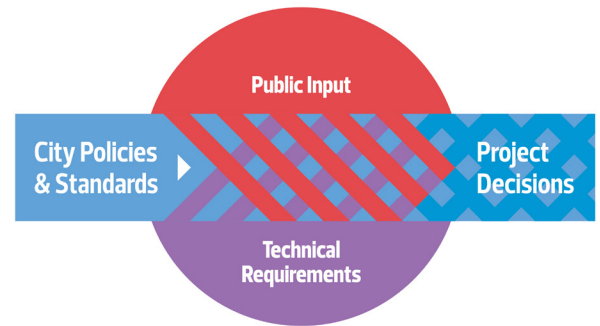
LEGEND

Public Engagement and Communications Opportunities	Concept Phase	Design Phase	Build Phase	Operate Phase
--	---------------	--------------	-------------	---------------



How decisions are made

Decisions are directed by City Policies and Standards, technical constraints and opportunities. Public input gathered throughout the project has provided local knowledge, helped create a project Vision and Guiding Principles to guide decision making and identified resident concerns and ideas to be considered to ensure the best neighbourhood experience for all users.



City policies and programs such as the **Complete Streets Design and Construction Standards, Safe Mobility Strategy and Winter City Strategy** provide the overall direction for Neighbourhood Renewal designs. As each neighbourhood is unique, the Project Team asks for input from residents who live, work and play in the neighbourhood, while considering technical aspects such as roadway widths and conflicts with utilities and trees to determine what will fit in the neighbourhood.

The City of Edmonton seeks input from residents to help guide the project. The City's Public Engagement Spectrum, below, shows the four levels of influence that the public can have on decisions made by the City throughout the project.

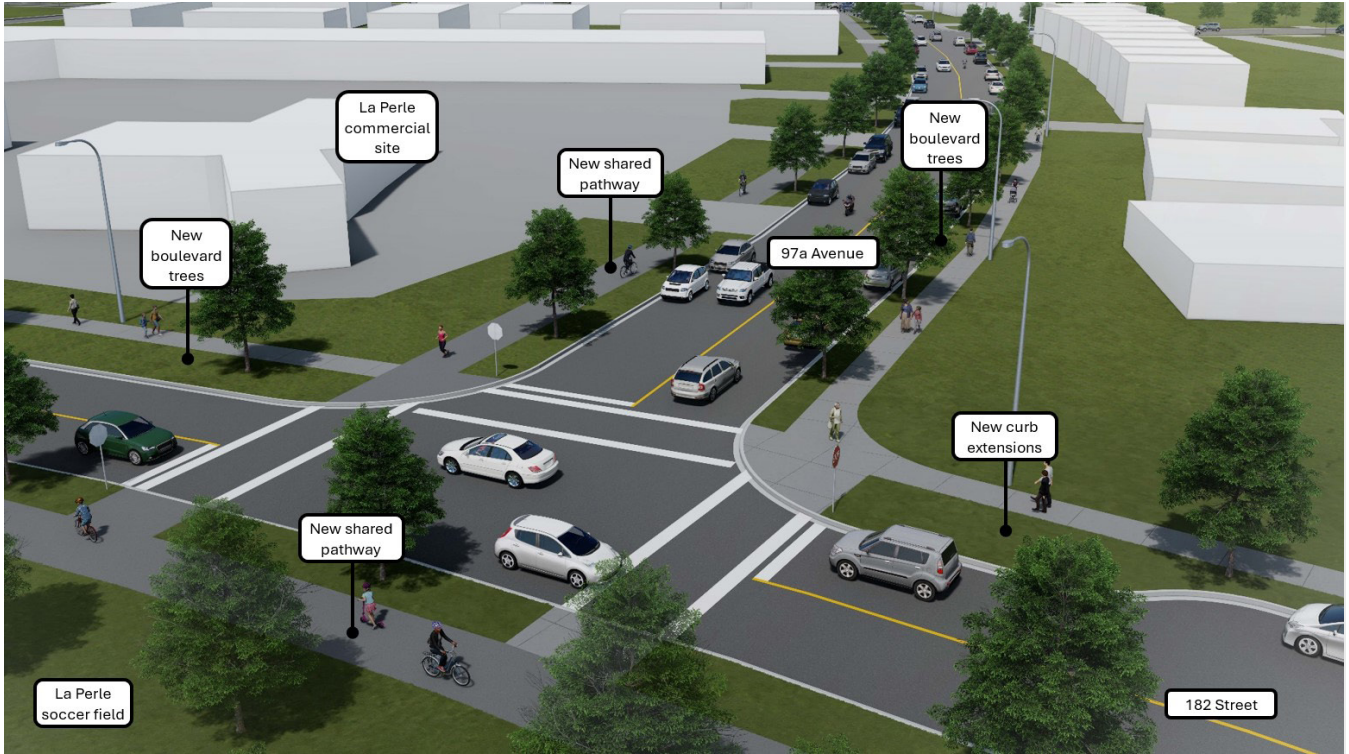
During the **Community Feedback on Draft Design** stage the public will:

- + **REFINE** the draft design and approaches of the Neighbourhood Renewal

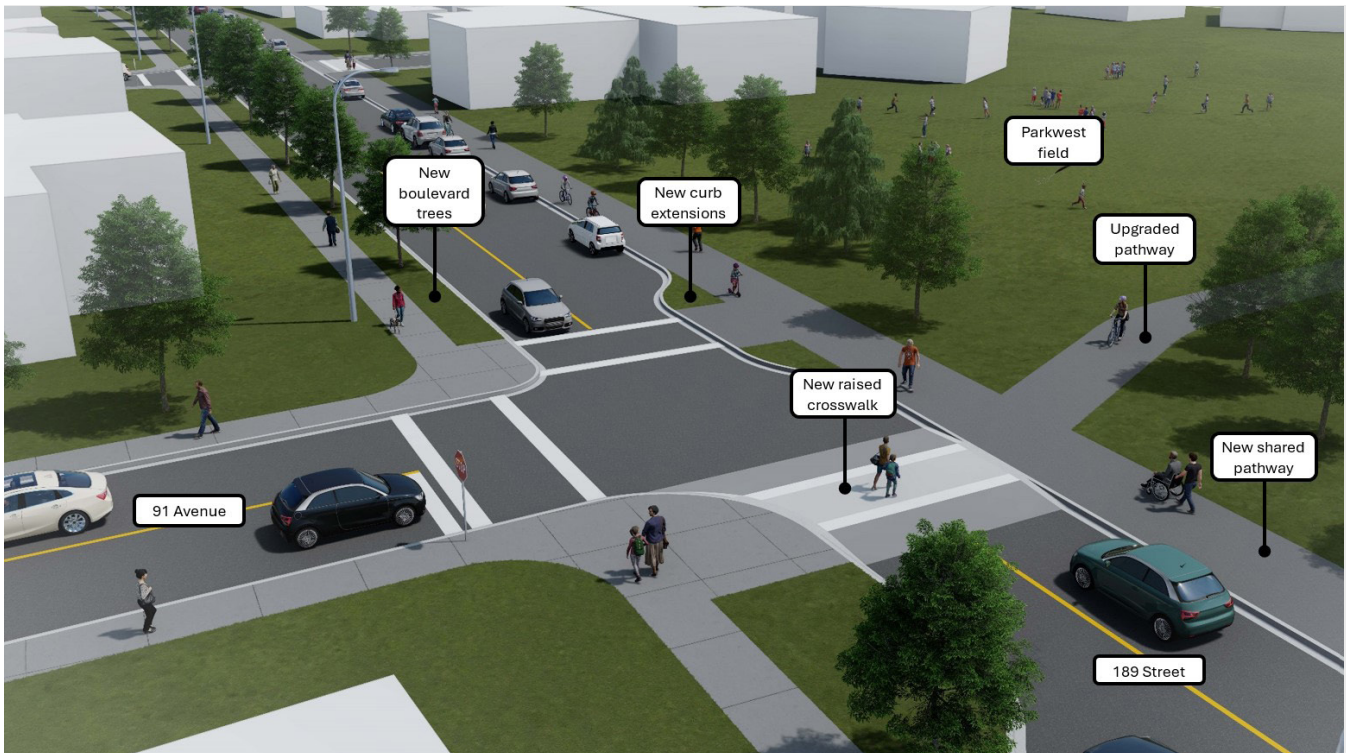


Draft design highlights

182 Street and 97a Avenue looking west



189 Street at 91 Avenue looking north towards Parkwest field





Neighbourhood Renewal public engagement

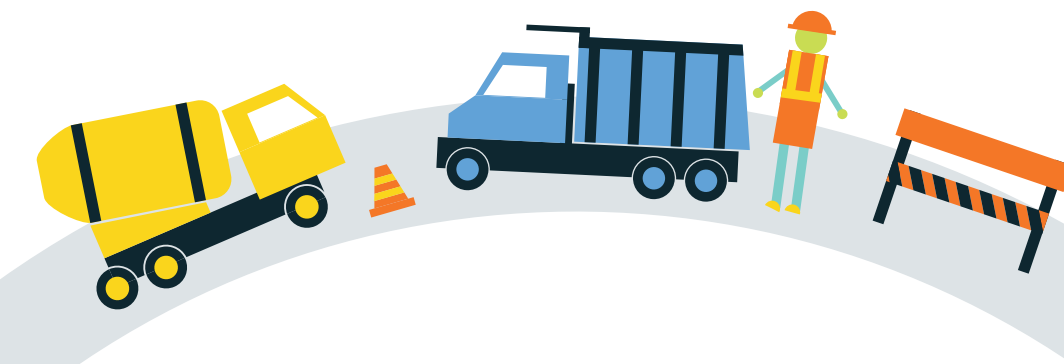
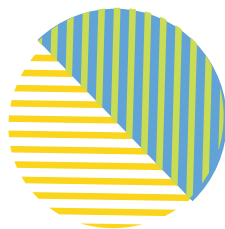
Exploring Options and Tradeoffs

April 21 to May 21, 2024

The La Perle and Belmead Neighbourhood Renewal Project Team organized the following opportunities for community members to Explore Options and Tradeoffs to **REFINE** our understanding of the opportunities that exist to improve your neighbourhood and provide opportunities for feedback:

- + Online survey was available from April 29 to May 21
- + An Options Tour took place on May 4
- + In-person (drop-in) open houses took place on May 9 and May 14

To review how we engaged and what we heard during the **Exploring Options and Tradeoffs** stage, review the What We Heard report at edmonton.ca/BuildingLaPerleandBelmead



La Perle and Belmead Neighbourhood Renewal Schedule

OCTOBER 2023

Starting the Conversation

JANUARY 2024 – FEBRUARY 2024

Building a Project Vision Together and Exploring Opportunities

APRIL – MAY 2024

Exploring Options and Tradeoffs

WE ARE HERE

NOVEMBER 2024

Community Feedback on Draft Design

MAY 1, 2025

Community-led decorative street light design deadline

2025

Community Feedback on Final Design



What we heard

In April and May 2024, La Perle and Belmead community members were invited to review the design options during the **Exploring Options and Tradeoffs** stage of engagement. In this stage, community members helped us identify the priorities for neighbourhood renewal by discussing the trade offs and benefits of design options.

The following is a summary of what we heard during this stage of engagement:

Walking, rolling and biking connections

In the previous stage of engagement, participants expressed the desire to see improved and additional pathway connections for walking, rolling and biking throughout La Perle and Belmead, as well as better connections between both neighbourhoods and to other areas of the city for people who walk, roll or bike.

Collector roads

Collector roads are streets that provide travel between local neighbourhood roads and busy arterial roads. Several options were explored and included adding shared pathways, converting to separated sidewalks or adding raised bike lanes. Some participants were supportive of having a shared pathway or separated sidewalks and liked that the boulevards separated people who walk, roll or bike from vehicle traffic. Participants shared that they would like to see parking areas maintained and expressed the importance of access to parked vehicles, bus routes, community mailboxes and areas for snow storage.

Local roads

Local roads are streets that are primarily used to gain access to the property bordering them. Several options were explored and included widening existing sidewalks or converting to separated sidewalks. Participants expressed that wider sidewalks on local roads would improve the experience for people who walk and roll.

Mobility considerations

Participants shared the importance of ease of access to transportation and that accessibility needs to be considered in the proposed design to ensure people of all abilities are able to enjoy the neighbourhood. Participants shared that reducing the slope of curbs would enhance accessibility to parked vehicles, taxis, DATS and other forms of transportation.

Crossing enhancements and safety

Crossing safety is a top priority for people who travel in and through La Perle and Belmead and participants expressed a desire to see traffic calming measures. Participants would like to see raised crosswalks to improve crossing accessibility and enhance sightlines and visibility for people who walk and roll.





La Perle and Belmead Vision and Guiding Principles

The Vision and Guiding Principles for La Perle and Belmead Neighbourhood Renewal was developed from input received from residents and stakeholders from October 2023 to February 2024 and confirmed by stakeholders during public engagement held between April to May 2024. The draft was posted online for feedback during the **Exploring Options and Tradeoffs** stage and revised based on this input prior to being finalized. The Vision and Guiding Principles will be used by the project team to align the neighbourhood design with the needs of the community and the implementation of policies and technical standards.

Vision

We are the well-established, safe, quiet and family-friendly communities of La Perle and Belmead. Our residents enjoy abundant green spaces within the communities which provide many opportunities to play and gather with neighbours. We are well connected to schools, parks and commercial destinations with access to key corridors beyond the communities.

Guiding Principles



Welcoming

La Perle and Belmead are vibrant and welcoming communities. There are diverse parks, open spaces, recreational opportunities and local amenities which provide opportunities for neighbours to be well-connected to one another and experience all that the communities have to offer.



Inclusive

People of all ages and abilities can safely and comfortably move through the communities using various modes of transportation to enjoy the diverse gathering spaces, parks, open spaces and recreational opportunities in La Perle and Belmead.



Safe

Residents feel comfortable walking, rolling, biking and driving in their communities at any time. Sidewalks, roads and crossings are enhanced to improve visibility, traffic, flow and movement for drivers, cyclists and pedestrians to safely travel within communities.



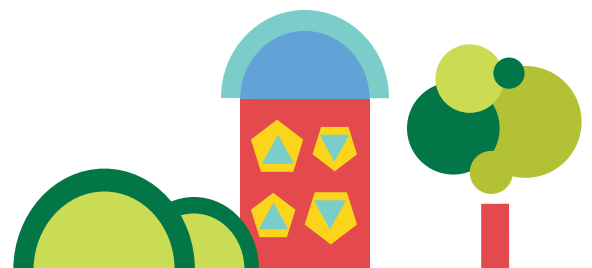
Local amenities

Amenities in the neighbourhoods provide opportunities for residents and visitors of all ages and abilities to enjoy. Local destinations are easy to access with many breezeways, paths, sidewalks and roads connecting different areas within communities.



Access to parks and open spaces

La Perle and Belmead have many beautiful parks and open spaces that are well-connected throughout the communities. Connectivity provides access to these spaces and creates opportunities for families, visitors and neighbours to gather with one another.



What you need to know about Local Improvements

As part of Neighbourhood Renewal, there are two Local Improvements that apply in the La Perle and Belmead neighbourhood: sidewalk reconstruction and upgrading to decorative street lights.

What is a Local Improvement?

A Local Improvement is a construction project undertaken near or next to residents' properties that is considered more beneficial to the property owner or local area than to the City as a whole. Therefore, the property owner is partially responsible for the cost of these improvements. Local Improvements are a part of the Neighbourhood Renewal discussions with you and your neighbours.

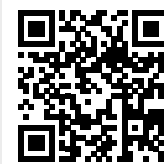
How is Neighbourhood Renewal paid for?

Neighbourhood Renewal is paid for through a City-wide property tax reserve fund dedicated to the program. However, two specific improvements – decorative street lights and sidewalk reconstruction – are cost-shared by the City and property owners in the neighbourhood, as they are considered Local Improvements. Property owners have two options for Local Improvement payments: either a one-time lump-sum charge or a recurring annual payment. The annual payment is divided over 15 years for decorative street lights and 20 years for sidewalk reconstruction. The payment and its interest are added to your property taxes.

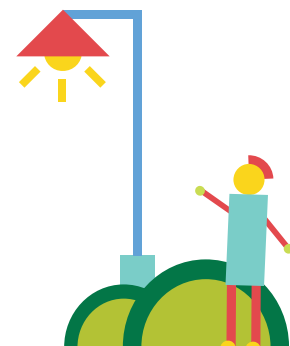
Sidewalk reconstruction

A sidewalk reconstruction Local Improvement is initiated by the City as part of Neighbourhood Renewal. As a property owner, you will be able to decide whether you would like to proceed with sidewalk reconstruction or not. More information about the Local Improvement assessment and next steps will be mailed out to property owners in the fall prior to the first year of construction.

Scan me!



Learn more about Local Improvements, scan the QR code or visit edmonton.ca/LocallImprovements.



Decorative street lights

Community volunteers lead the campaign to select a decorative option for street lights.

Please let us know if you or any of your neighbours are interested in leading the campaign to decide on decorative street light options in La Perle or Belmead. A decorative street light committee can be created to collect input on the design options. The community must **submit the preferred decorative street light option by May 1, 2025**.

Once an option is submitted, the City will provide an Expression of Interest package to all registered property owners in the neighbourhood. Property owners will then return their completed notice selecting whether they support or do not support the decorative street lights. If the City receives sufficient support from the community, the Local Improvement process will begin.

The City can provide support by sharing the options available for decorative street lights and help gather feedback at upcoming public engagement opportunities. Please contact chase.gingles@edmonton.ca if you are interested in leading this campaign.

What are the options for decorative street lighting?

Decorative street light options include pole colour and type, arm style and style of light fixture.

Pole



Octagonal

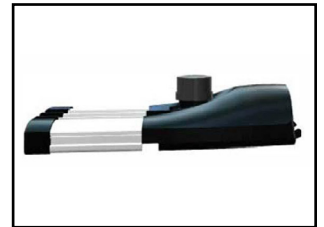


Fluted

Luminaire



Renaissance



Regular

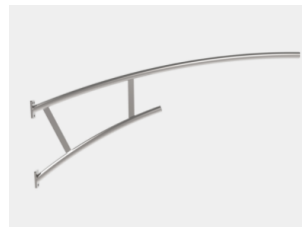
Light fixture



Scroll



Heritage



Newport

Colour



Blue



Green



Black





Nearby projects

The La Perle and Belmead Neighbourhood Renewal Project Team is working closely with other projects in your communities including:

Valley Line West – Fall update

The Valley Line West LRT is a \$2.6 billion infrastructure project supported by federal, provincial and municipal funding. This transformational public transit project provides residents with a sustainable alternative to driving and will help move residents along key corridors throughout Edmonton in the coming decades.

In 2024, the first track slab and rail installation at 139 Street and Stony Plain Road intersection was completed by Marigold Infrastructure Partners. Work along Anthony Henday Drive has progressed significantly and the project is working with the province to ensure minimal traffic disruptions.

Valley Line West in the Community

The Valley Line West Stakeholder Relations team will be partnering with the Community Leagues along the route to provide information sessions aimed at providing construction updates to residents.

Presentations are led by the Valley Line West Project Team and include collaboration with other City projects.

- + **For general project inquiries**
 - Please visit edmonton.ca/vlwlrtandme
 - Email: lrtprojects@edmonton.ca
 - Call: 780-496-4874 (LRT Projects Information Centre voicemail)
- + **For specific questions regarding day-to-day construction**
 - Please visit edmonton.ca/vlwlrtandme
 - Email: public@Marigoldinfra.ca
 - Call: 780-412-2183

To receive construction updates subscribe to emails at marigoldinfra.ca/email-signup

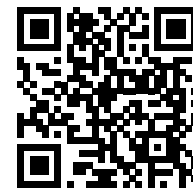
Working together to make the most out of your neighbourhood.

This is your city and your neighbourhood. We want to understand how you experience your neighbourhood and ask for your input on what we might do to make it better. We will engage and work with you on the renewal of roads, sidewalks, street lights and park spaces. We will also promote other community opportunities to enhance how people live and interact in your neighbourhood. We commit to being open and transparent about how your input is used. Let's make the most out of your neighbourhood.

Stay informed and engaged

For more information regarding the La Perle and Belmead Neighbourhood Renewal, upcoming public engagement activities and to subscribe for project updates, scan the QR code or visit edmonton.ca/BuildingLaPerleandBelmead

Scan me!



SHARE YOUR VOICE
SHAPE OUR CITY

Edmonton