

What We Heard Report

La Perle and Belmead Neighbourhood Renewal

Community Feedback on Draft Design
November to December 2024

REFINE

SHARE YOUR VOICE
SHAPE OUR CITY

Edmonton

Project overview

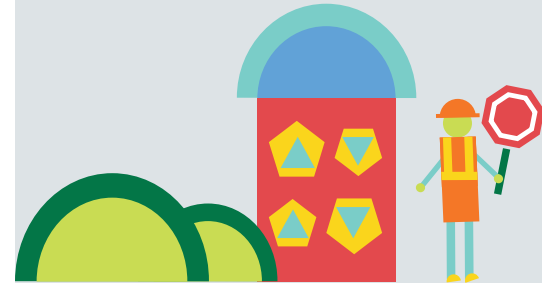
The City's Neighbourhood Renewal program will reconstruct roads and curbs, install new street lights, repair sidewalks and where possible, complete active transportation links in La Perle and Belmead. Other opportunities to improve City-owned parks and public spaces will also be explored.

Cost-sharing opportunities will be made available through the Local Improvement process for sidewalk reconstruction and decorative street light upgrades in the neighbourhood. The new infrastructure will provide enhancements to the neighbourhoods for the next 30 to 50 years.

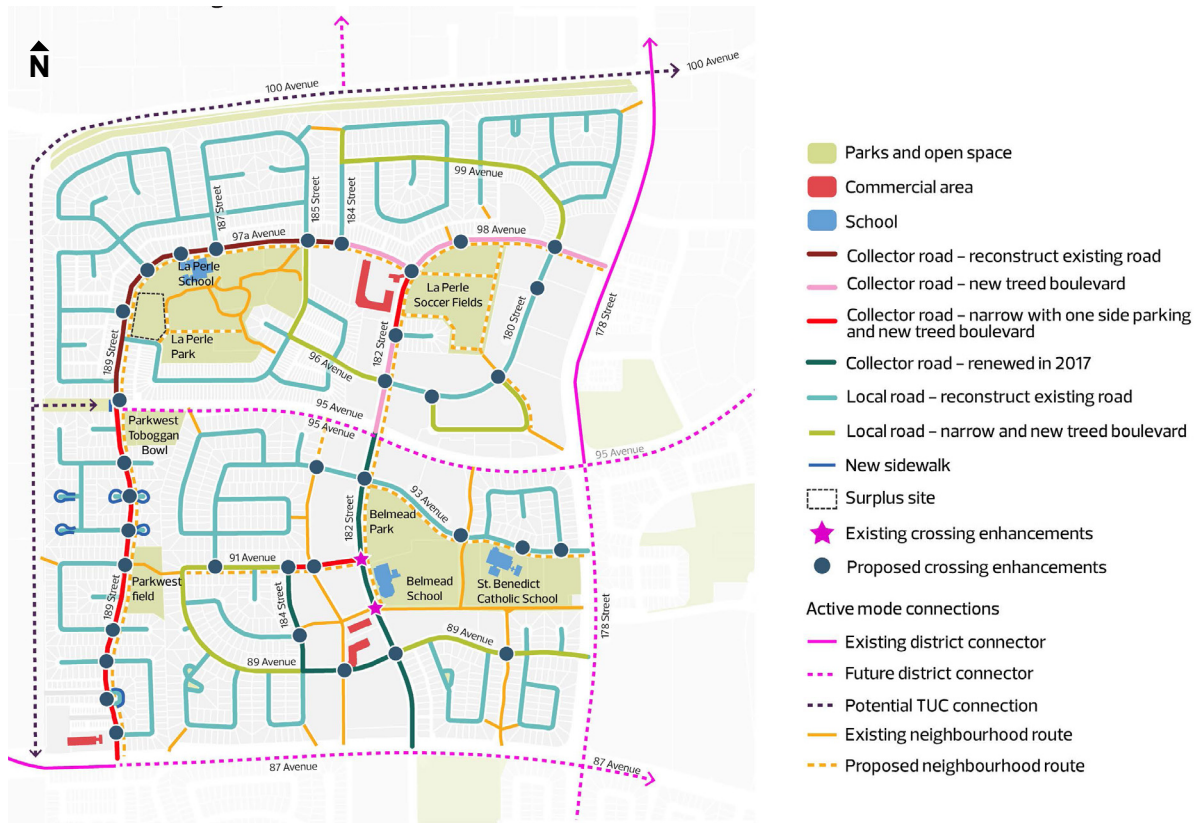


Table of Contents

Project overview	2
Neighbourhood Renewal Road Map	3
Public Engagement Spectrum	4
What we asked and how we asked	6
What we heard	7
Next steps	11



La Perle and Belmead Neighbourhood Renewal project scope map



Neighbourhood Renewal Road Map

The Neighbourhood Renewal program follows the road map below. At each stage, the Project Team shares with you how your input will inform the decisions being made.

This report highlights the input received during the **Community Feedback on Draft Design** stage between November 5 and December 15, 2024. To learn more about previous stages, visit edmonton.ca/BuildingLaPerleandBelmead.



LEGEND

Public Engagement and Communications Opportunities

Concept Phase

Design Phase

Build Phase

Operate Phase

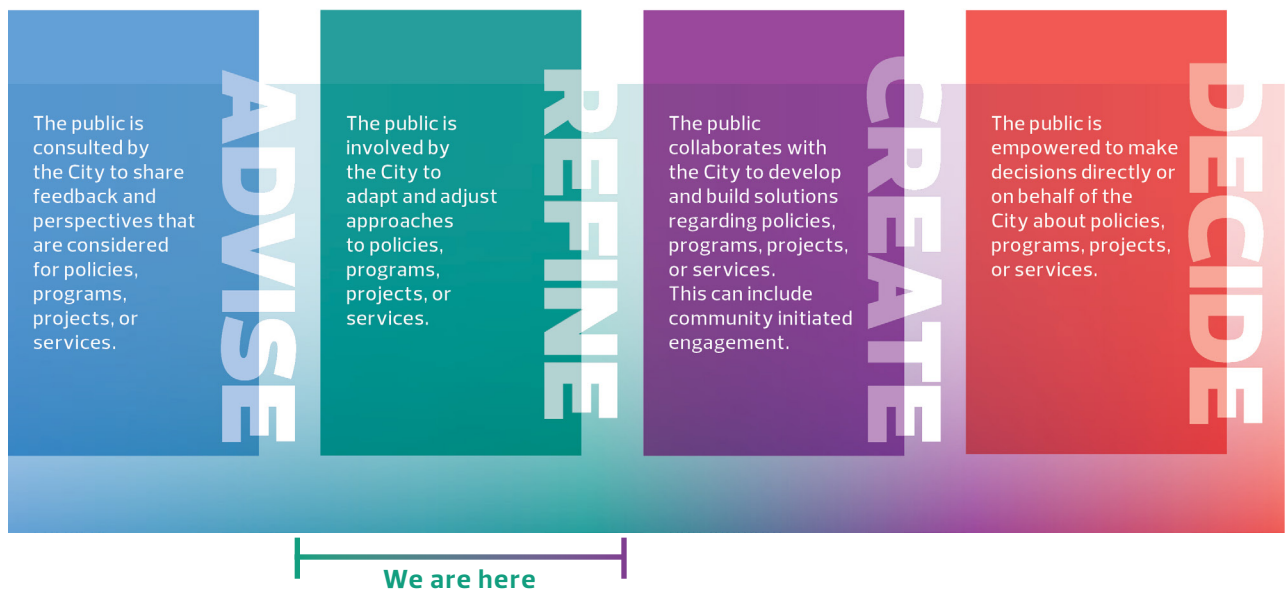
Public Engagement Spectrum

The City of Edmonton seeks input from residents to help guide the project. The City's Public Engagement Spectrum, below, shows the four levels of influence the public can have on decisions made by the City throughout the project.

In this stage of engagement, the public was invited to provide input that would help:

- + **REFINE** the draft design to ensure it aligns with the Vision and Guiding Principles that were co-created at the beginning of the project

We commit to telling you how public input influences decisions according to the Public Engagement Spectrum.



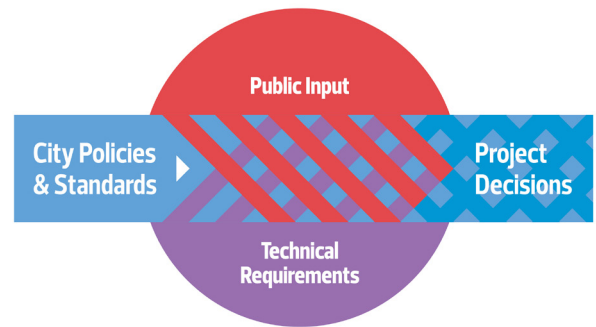
How decisions are made

For Neighbourhood Renewal projects, the City of Edmonton uses three components to make decisions: City policies and programs, technical requirements and public engagement input.

City policies and programs provide the overall direction for Neighbourhood Renewal designs. As each neighbourhood is unique, the Project Team asks for input from residents to understand the current and future needs of those who live, work and play in the neighbourhood. The Project Team also considers technical aspects such as standardized roadway widths or conflicts with utilities and trees to determine if and where new design opportunities can be included within the neighbourhood and where challenges may arise.

For every decision, the Project Team uses these elements to make some hard decisions that have to include compromises and tradeoffs, as well as consider available funding. This ensures the outcome is good for the neighbourhood as a whole – for today and the future.

It's important to note that public engagement feedback is not a vote, nor is it a statistical representation of all residents. It does, however, provide an indication of local concerns and desires. Input received through Neighbourhood Renewal public engagement cannot change policy direction and all designs are subject to final approvals and funding.



Did you know... Neighbourhood Renewal looks to understand how people move in and around the neighbourhood today and adapt to meet their needs over the next 30 to 50 years. A number of policies guide this including Complete Streets, Active Transportation and Winter Design.



What we asked and how we asked

The La Perle and Belmead Neighbourhood Renewal Project Team organized the following opportunities for the public to share feedback on the draft design for the neighbourhood. This input will help the Project Team **REFINE** the draft design into the final design.



Online survey

- + An online survey was available to the public from November 5 to December 15, 2024. We shared information about the draft design and asked you questions to help **REFINE** the design
- + Paper copies of the survey were made available to community members upon request

402 survey participants



Community conversations

- + In-person events provide an opportunity for the public to ask the Project Team questions and provide feedback about the neighbourhood renewal process, draft design and proposed changes
- + Residents had the opportunity to meet the Project Team on November 14 at the Belmead Community League and November 23 at the La Perle Community League
- + Pop-up events took place on November 7 at the West End Seniors Activity Centre and on November 16 at the La Perle Soccer Fields

138 neighbourhood conversations



Project web page

- + We asked the community to visit the project web page to access information about the project, view the design materials and learn more about La Perle and Belmead Neighbourhood Renewal

4,726 unique visits to edmonton.ca/BuildingLaPerleandBelmead



How we communicated

- + 189 mailing list subscribers
- + 5,396 newsletters
- + 5,396 postcards
- + 1,978 letters*
- + 20 posters
- + 15 yard signs
- + 3 road signs
- + 3,320 clicks on Facebook and Instagram ads

*Letters to residents were impacted by the Canada Post strike that occurred from November to December 2024.

What we heard

In November and December 2024, La Perle and Belmead community members were invited to review the draft design of neighbourhood renewal during the **Community Feedback on Draft Design** stage of engagement. In this stage, community members were asked to reflect upon the draft design and the extent to which it reflects the Vision and Guiding Principles for the neighbourhood.

While public engagement is not considered a statistical representation of all residents, it does provide the Project Team with an understanding of how people are interacting with the area and how neighbourhood design can be used to address the current and future needs of La Perle and Belmead residents.

The following sections include a summary of what we heard during public engagement and has been developed to reflect the relevancy, frequency and diversity of responses we received based on the questions asked.

Walking, rolling and biking connections

Participants were asked to comment on the draft design for walking, rolling and biking connections which included the following considerations:

- + New or missing sidewalk connections added
- + Existing sidewalks reconstructed to meet current standards
- + New shared pathways added
- + Upgrades to existing shared pathways
- + Existing breezeways rebuilt to shared pathways

What we heard – walking, rolling and biking connections

- + There was general support for the proposed changes, particularly additional pathway connections near parks and open spaces
- + A number of respondents were supportive of sidewalk renewal as current sidewalks are in a state requiring repair
- + A few respondents support the addition of new sidewalks in cul-de-sacs while several respondents indicated that these areas currently experience minimal walking and rolling traffic
- + A number of respondents support the addition of new shared pathways and emphasized on their importance for connecting the neighbourhood with surrounding amenities
- + A few respondents shared their support for on-street parking availability being maintained alongside new shared pathways

"... it's common to see lots of people in this area walking their dogs, going on runs or biking around. Improvements to the sidewalks and safe crosswalks are very appreciated."

"Shared pathways are essential for safe bike travelling as well as accommodating multiple users. I really like the additional "proposed neighbourhood routes" in the fields, but I hope they would have lighting to improve safety at night. This plan is exciting!"

Did you know... Widening existing sidewalks, constructing missing sidewalks and building biking connections in the neighbourhood will enhance overall connectivity and accessibility for all ages and abilities, promote opportunities for active living and community well-being which are in alignment with City policies and standards like the Active Transportation Policy and Complete Streets Design and Construction Standards.

Roadways and crossings

Participants were asked to comment on the draft design for roadways and crossings which included the following considerations:

- + Reconstructed to meet current standards
- + Traffic calming measures and crossing enhancements such as raised crosswalks and curb extensions
- + On-street parking maintained where possible
- + Existing sidewalks reconstructed
- + New or upgraded street lighting installed
- + New trees and Low Impact Development* (LID) added throughout the neighbourhood

** Low Impact Development (LID) is an approach to land development that works with nature to manage stormwater runoff where it falls*

Collector roads

Collector roads are streets that provide travel between local neighbourhood roads and busy arterial roads.

What we heard – roadways and crossings: collector roads

- + There was general support for the renewal of roadway surfaces and the addition of traffic calming measures along collector roads
- + A number of respondents believed that narrowing the roadway along collector roads may result in increased traffic congestion during school drop-off and pick-up times
- + Several respondents shared their preference to maintain on-street parking along 189 Street to access community amenities like the Parkwest Toboggan Bowl
- + Several respondents shared their desire to see additional traffic calming measures near key intersections such as 189 Street and 87 Avenue as well as 178 Street and 87 Avenue to improve community safety for people who walk, roll and bike
- + Some respondents shared that they would like to see more traffic calming measures to discourage commuters shortcutting through the neighbourhood to avoid nearby LRT construction during the afternoon rush hour
- + Several respondents supported the maintenance of on-street parking near schools

"There is a lot of shortcutting taking place through La Perle (and Belmead) via 189 St between 189 St and 87 Ave to 178 St and 98 Ave. Anything that reduces the volume of traffic will be welcome."

"182 Street ... has seen a significant amount of traffic increase in the last year. ...speed is also an issue. Although I don't like the raised extensions, it may be a deterrent for speeders in our crescent."

Did you know... The addition of raised crosswalks, curb extensions and other traffic calming measures enhance the safety and connectivity for people who walk, roll and bike. These changes are guided by the Safe Mobility Strategy, Complete Streets Policy and the Active Transportation Policy. Public feedback helps the Project Team determine where these measures may be needed by sharing their experiences.

Local roads

Local roads are streets that are primarily used to gain access to the property bordering it.

What we heard – roadways and crossings: local roads

- + There was general support for the renewal of local roadways
- + A number of respondents supported maintaining on-street parking throughout the neighbourhood and noted the importance of parking availability near community amenities
- + A number of respondents shared concerns that the proposed centre meridian at 184 Street and 97a Avenue would reduce visibility for drivers turning onto 97a Avenue from 184 Street
- + Some respondents shared that they would like to see additional traffic calming measures in the final design to discourage commuters shortcutting through the neighbourhood to avoid nearby LRT construction during the afternoon rush hour

"[The] ... roadways which access the school, park, transit routes and commercial areas ... [could] use improved crosswalks and pathways as they are the areas of highest volume pedestrian-traffic interaction."

Did you know... The draft design is utilizing existing road right-of-way in order to minimize impacts to private property. Space for the proposed boulevards and widened sidewalks will come from moving the sidewalks towards the property line in some locations and by shifting the curb into the existing road in other locations. More specific details will be available as the design is finalized. If there are impacts to private property or landscaping the Project Team will reach out to property owners and residents for discussion.



Parks and open spaces

Participants were asked to comment on the draft design for parks and open spaces which included the following considerations:

- + Upgrades to existing shared pathways and tie-in missing connections
- + Improved seating areas along key walking and biking routes
- + Additional amenities such as bike parking and waste bins
- + Lighting improvements where identified as missing or needing replacement
- + New trees added in parks and open spaces

What we heard – Parks and open space

- + A number of respondents believe the draft design reflects the community's current and future needs
- + Several respondents were pleased to see improved seating areas added along key walking and biking routes and additional amenities such as bike parking in parks
- + Several respondents support the addition of new pathways connecting parks and open spaces to the surrounding neighbourhood
- + A few respondents shared the importance of traffic calming measures and maintaining on-street parking availability near parks

"The flow of foot/bike traffic as proposed looks great. I feel happier knowing that my children will be able to ride their bikes on shared paths instead of roads, and that the community is connected in a way that makes sense. Please ensure paths are well lit."

"... [Many] people [who walk] cross Parkwest Field across from South (189 St) to North East (91 Ave) ... [it] will be nice to have a pathway following the line of trees already present and connecting to the actual pathway on 91 Ave."

"Very pleased with the increase [of] trees in the neighbourhood!"

Note: Some respondents shared the desire to see additional amenities within the community such as a new playground, the addition of a dog park and the development of additional tennis courts or soccer fields. These additional amenities are outside of the scope of La Perle and Belmead Neighbourhood Renewal. Some of these projects may be eligible for grant funding to support these community-led projects. Residents interested in pursuing the development of a community-led project should connect with their Neighbourhood Resource Coordinator by calling 311. Together, we can set up a meeting with interested La Perle and Belmead residents to discuss potential ideas.

Did you know... The Complete Streets and Accessibility policies inform a number of aspects of design in Neighbourhood Renewal. These policies support accessibility and guide the design to include new wider sidewalks and barrier-free connections to green spaces, streets and destinations.

Next steps

Thank you to all who shared their input during the **Community Feedback on Draft Design** stage of engagement. Your feedback will be considered along with City policies, programs and technical requirements in deciding the final design.

In 2025, the public will be invited to participate in the **Community Feedback on Final Design** stage of engagement for La Perle and Belmead Neighbourhood Renewal. During this stage, the Project Team will return to the community to share the final design of neighbourhood renewal and invite your feedback and insights.

Property owners interested in the decorative street lighting Local Improvement for their neighbourhood can contact the Project Manager to get more information and find out next steps. Local Improvement information packages for sidewalk reconstruction as well as decorative street lights will be mailed out prior to the first year of construction. These information packages will include property assessments as well as information about the petition process. To learn more about the Local Improvement process, visit edmonton.ca/LocalImprovements.

For more information regarding La Perle and Belmead Neighbourhood Renewal, upcoming public engagement activities and to subscribe for project updates, please visit edmonton.ca/BuildingLaPerleandBelmead.





Working together to make the most out of your neighbourhood.

This is your city and your neighbourhood. We want to understand how you experience your neighbourhood and ask for your input on what we might do to make it better. We will engage and work with you on the renewal of roads, sidewalks, street lights and park spaces. We will also promote other community opportunities to enhance how people live and interact in your neighbourhood. We commit to being open and transparent about how your input is used. Let's make the most out of your neighbourhood.

SHARE YOUR VOICE
SHAPE OUR CITY

Edmonton