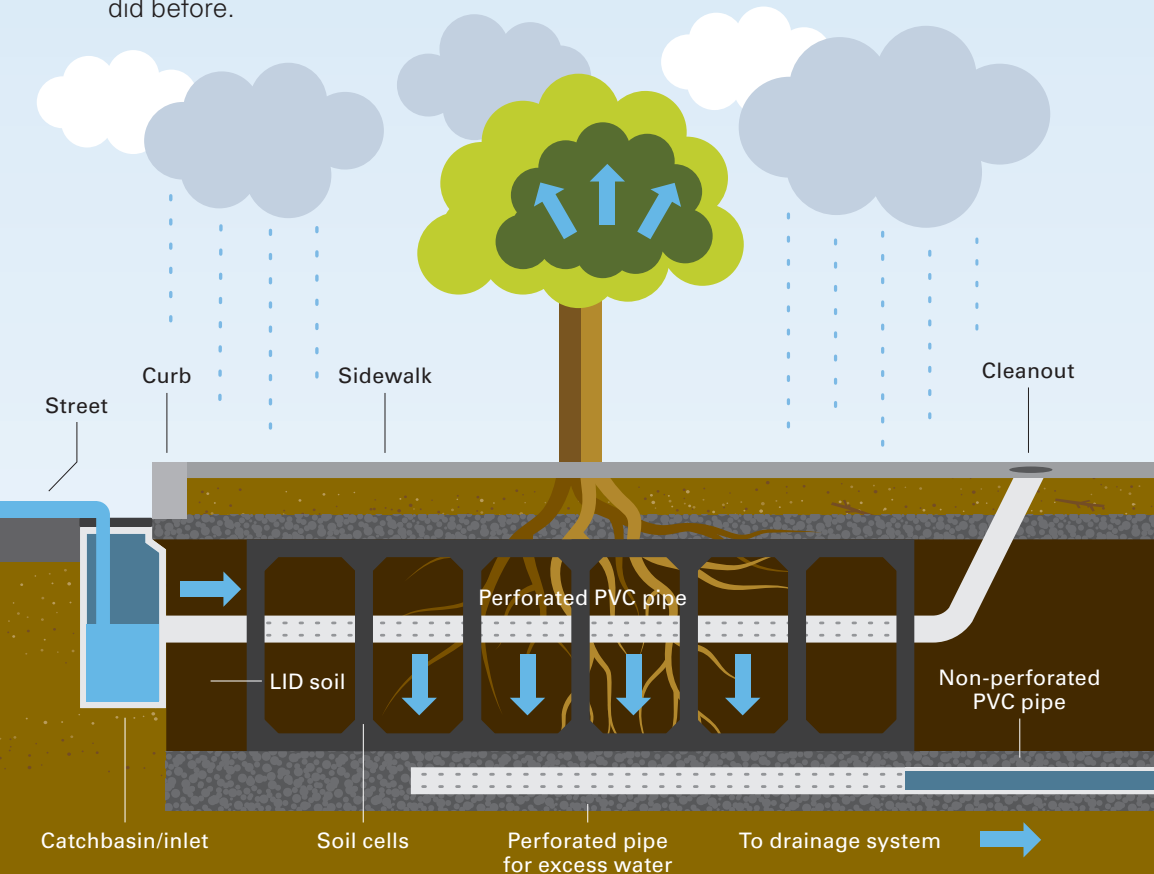


The City of Edmonton will be installing Low Impact Development infrastructure.

LOW IMPACT DEVELOPMENT APPROACH

Currently, when it rains, the water on your street flows into a catch basin connected to underground pipes which lead to the wastewater treatment plant or into the North Saskatchewan River. The planned utility work will construct a low impact development (LID) facility for rainwater and runoff to be directed into. LID uses plants and special soils to capture, store and manage the water from small rain events. Excess water drains into the underground pipes as it did before.



WHAT ARE THE BENEFITS?

- Helps reduce local flooding. Small amounts of rain can be absorbed entirely by the facility. During bigger storms, the facility slows the speed of water entering underground pipes, reducing the chance of backup and flooding.
- Cleaner stormwater leads to a cleaner river. LID facilities improve stormwater quality, preventing certain pollutants from entering creeks and rivers.
- Adds important green spaces and vegetation for citizens, bees, and wildlife.
- Helps to combat climate change impacts by adding greenery and reducing the impact of heat reflecting off paved surfaces.

TIMELINE

LID facilities will be added during neighbourhood renewal construction. Please refer to the City of Edmonton Construction Update for information on when construction will be happening on your street.

AFTER INSTALLATION

Catch basins may appear more full because of the way the underground piping of the facility is designed. Residents can expect that there may be standing water for short durations following rain events or during snow melt. Please note, it will take time for plants to establish and it's important to not walk or drive through the LID facility at any time, other than on designated areas.

FOR MORE INFORMATION

Please visit the renewal project website (https://www.edmonton.ca/transportation/on_your_streets/neighbourhood-renewal.aspx) or call 311 for more information about renewal of your neighbourhood.



If you have any questions about LID facilities or their construction please contact:

EPCOR
780-412-4200
epcorprojects@epcor.com