

---

## BROCHURE

# Ellerslie Road Southwest Expansion at Whitemud Creek – Eco Station Road to Graydon Hill Boulevard

### About the Project:

Due to continued growth in the Windermere and Heritage Valley areas, Ellerslie Road requires expansion from a two-lane to a four-lane configuration. This expansion includes the construction of an additional bridge over Whitemud Creek.

The project extends from the Ambleside Eco Station access road to west of 135 Street SW. Privately funded through Arterial Roadway Assessment funds, this initiative aims to support future development in the Windermere and Heritage Valley areas while addressing both current and future traffic congestion issues. Additionally, pedestrian and cyclist connectivity will be improved. While construction will begin in 2025, the majority of the work will be completed in 2026 due to long lead times for certain construction materials and the need for existing utility relocation.

The major components of the Project include the following:

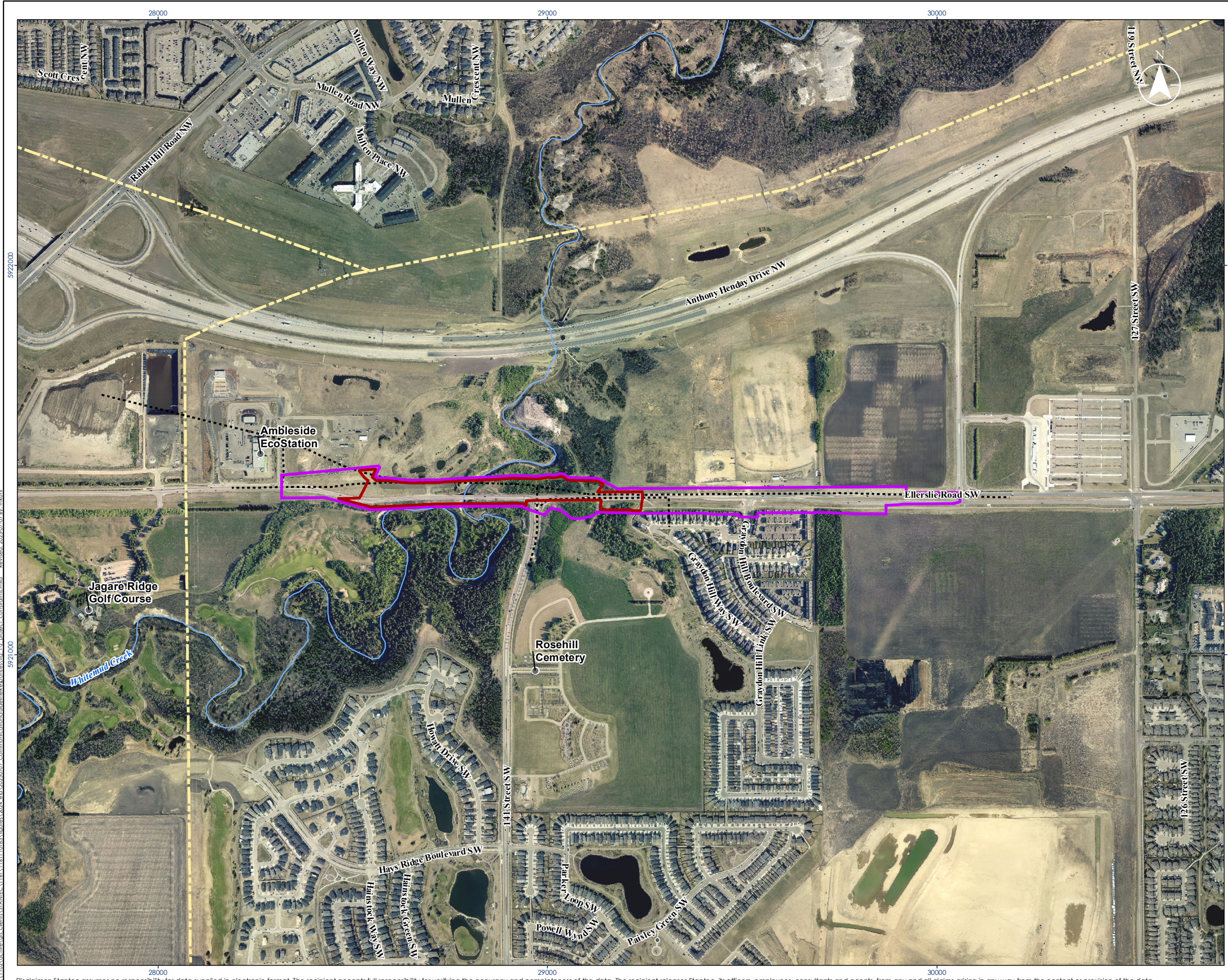
- Relocate utilities within the existing Right of Way
- Protect existing utilities
- Earthworks
- Slope stability piling and retaining walls
- Surface water drainage / storage system
- Additional bridge crossing of Whitemud Creek Ravine
- Armouring the banks of Whitemud Creek
- Additional two traffic lanes and shared use pathways
- Restoration landscaping

**Impact on Traffic:** Please be aware that there will be temporary changes in typical traffic patterns during the construction period. We encourage you to plan your routes accordingly and allow extra travel time. Note, we do not anticipate any full closures of Ellerslie Road in 2025. Access to and from Graydon Hill and local businesses will be maintained throughout the project. The project team is committed to minimizing the impact on traffic while also ensuring that the project is completed in as short a timeframe as is safely possible.

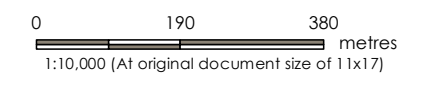
**Contact Information:** For any questions or concerns, please contact our project team at:

Stantec Consulting Ltd, [roy.mcdiarmid@stantec.com](mailto:roy.mcdiarmid@stantec.com), 780-969-2114.

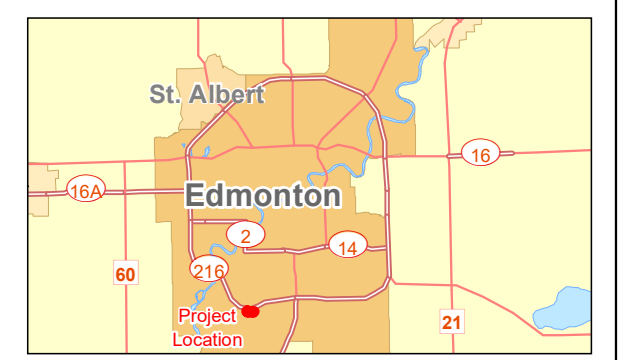
Thank you for your understanding and cooperation as we work to improve your community's infrastructure.



- Project Disturbance Area (PDA)
- Ellerslie Road SW Expansion Area
- Sanitary Line
- Powerline



- Notes**
1. Coordinate System: NAD 1983 3TM 114
  2. Base features: Geogratis, ©Department of Natural Resources Canada, All rights reserved. AltaLIS Ltd.
  3. Imagery: City of Edmonton, 2017.
  4. Coal Mines: Alberta Energy Regulator (AER), Coal Mine Map Viewer (Downloaded 2024-06-24).
  5. Pipelines: Alberta Energy Regulator (AER); Wells and Pipelines in Alberta (Downloaded 2021-11-04).
  6. Powerlines: AltaLIS (Downloaded 2021-11-03).
  7. Sanitary Lines: STANTEC, DWG 1161110195-C004-001-UTILITIES & DRAINAGE.dwg.



Project Location 1161110185  
 Portion of 19- and 30-051-24W4 and 23 to 26-051-25W4, Edmonton, Alberta  
 Prepared by MK on 2024-06-21  
 TR by KF on 2024-11-27  
 IR by EL on 2024-11-01

Client/Project  
 Brookfield Residential (Alberta) LP  
 Municipal Environmental Impact Assessment  
 Ellerslie Road SW, Eco Station Rd to Graydon Hill Blvd

Figure No.  
**1-2**  
 Title  
**Project Constraints**

V:\1102\active\_dtl\_client\STANTEC\1161110185\Report\2024\_06\_21\20250707\_CommunicationGuideLineResponse\Fig\_1-2\_project\_constraints.mxd  
 Revised: 2025-07-07 by: mkh  
 5921000  
 5922000