



What We Heard Report: Dunluce Neighbourhood and Alley Renewal

Community Feedback on Final Design

June 2025

SHARE YOUR VOICE
SHAPE OUR CITY

Edmonton

What We Heard Report: Dunluce Neighbourhood and Alley Renewal

Table of Contents

3Project overview
4Neighbourhood Renewal Road Map
5Public Engagement Spectrum
5Decision making process
6Public Engagement – how we engaged
7What we heard
8Final design for Dunluce
10Preparing for construction
11Decorative street blades
12Next steps

Click on the topic to jump to that section.



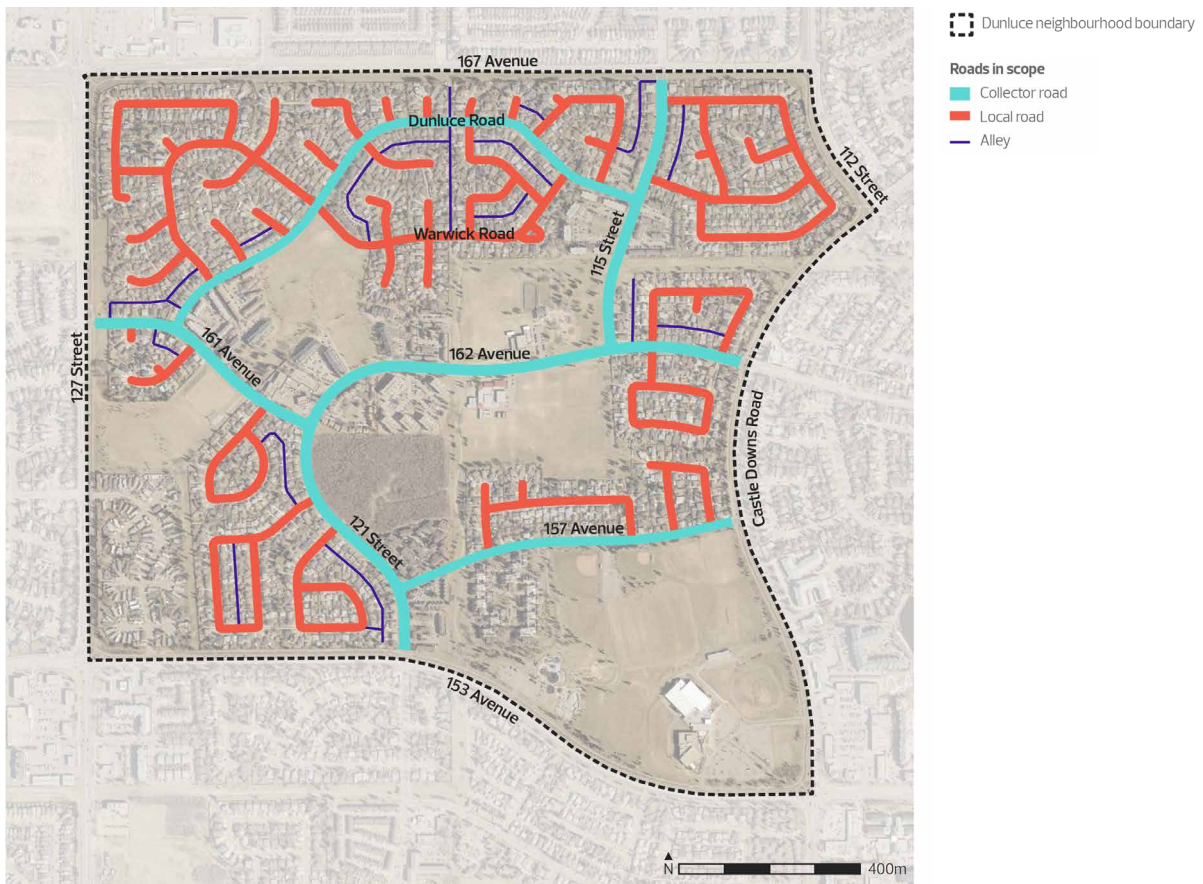
Project overview

Neighbourhood and Alley Renewal construction in Dunluce is anticipated to begin in summer 2025. Through the City of Edmonton's Neighbourhood Renewal program, we will rehabilitate roads, replace street lights, curbs and gutters, repair sidewalks and connect missing sidewalk links, where possible. Other opportunities to improve City-owned parks and public spaces were also explored.

Alley Renewal is also included as part of this project and involves alley reconstruction and repaving, improvements to surface drainage, where possible, and upgrading of existing lighting to LED fixtures.

Cost-sharing opportunities will be made available through the Local Improvement process for sidewalk reconstruction.

Dunluce Neighbourhood and Alley Scope Map



Neighbourhood and Alley Renewal Road Map

The Neighbourhood Renewal program follows the road map below. At each stage, the Project Team shares how your input informs project decisions.

This report highlights the input received during the Community Feedback on Final Design stage in November 2024. To learn more about previous stages, visit edmonton.ca/BuildingDunluce.

During this project stage, the Project Team reviewed and analyzed public feedback on the proposed options from the previous engagement stage — Community Feedback on Draft Design — and considered it as they developed the final neighbourhood design.



Public Engagement Spectrum

The City of Edmonton seeks input from citizens to help guide the project. The City's Public Engagement Spectrum, below, shows the four levels of influence the public can have on decisions made by the City throughout the project.

In this stage of engagement, the public was invited to provide input that would help **ADVISE** the Project Team's proposed final design.

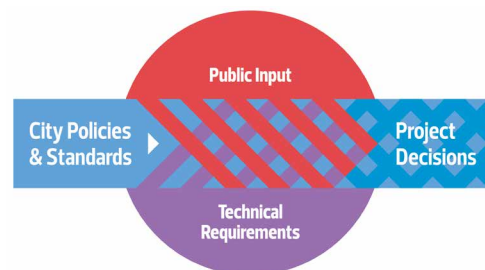
We commit to telling you how public input influences decisions according to the Public Engagement Spectrum.



Decision making process

City policies and programs such as the Complete Streets Design and Construction Standards, Safe Mobility Strategy and Winter City Strategy provide the overall direction for Neighbourhood Renewal designs. As each neighbourhood is unique, the Project Team asks for input from residents who live, work and play in the neighbourhood and considers technical aspects such as roadway widths and conflicts with utilities and trees to determine what will fit in the neighbourhood.

This process helps to ensure the decisions we make are fiscally responsible; align with best practices; consider the existing public and private infrastructure, land uses and activities in the neighbourhood; and result in the best outcomes for our city.



Public engagement

How we engaged

Dunluce residents were presented with the final neighbourhood design. They were asked to complete an online survey to consider the extent they thought the final design reflected the **Vision and Guiding Principles** for Dunluce, provide general feedback on the final design, inform the Project Team of anything it should consider while planning for construction and what shape/colour of decorative street blades they prefer.

The Dunluce Neighbourhood and Alley Renewal Project Team organized the following public engagement opportunities:

Survey (online)



An online survey was available for the public to complete from November 7 to 30, 2024. The survey asked participants to share their thoughts on the final neighbourhood design and how well it aligns with the Dunluce Vision and Guiding Principles.

Paper copies of the survey were available upon request.

171 responses

Public event (in person)



An in-person public engagement event was held on November 20, 2024 at Dunluce School. The event presented the final design options for walking, rolling, biking, driving and open spaces in Dunluce. Residents had the opportunity to ask questions and provide feedback.

157 attendees

How we communicated

We encouraged community members to visit the project web page to access information about the project and the engagement opportunities. Other tools to promote the engagement opportunities included:

- + 2,798 project web page views
- + 1,500 clicks on Facebook and Instagram ads
- + 2,100 letters and newsletters delivered to community members
- + 2,100 postcards delivered to community members
- + Four road signs, six pole signs, eight A-frame signs and 28 yard signs
- + Project update sent to list of 134 subscribers

The Dunluce Community League also distributed project information to community league members and the Project Team responded to email and phone inquiries from neighbourhood residents.

What we heard

The following sections include a summary of what we heard from the public who provided feedback during the **Community Feedback on the Final Design** stage.

Over 300 participants completed the online survey or attended the in-person event. This public feedback is not considered a vote, nor is it considered a statistical representation of the 6,000 neighbourhood residents. The purpose of **Community Feedback on Final Design** is to highlight any outstanding public concerns that the Project Team may be able to address through minor refinements to the final design.

Any refinements made at this stage first refer to City policy direction and technical requirements. City policies are responsible for prioritizing the addition of infrastructure like bike connections and wider sidewalks and technical studies reveal if and where the infrastructure is physically possible to install.

Any refinements that can be made will be shared in the **Preparing for Construction** stage. All designs are subject to final approvals and funding.

Acknowledgement

Over 6,000 residents live in Dunluce, each with needs and opinions on how they envision its future. We know some residents do not feel heard by the City and feel the final design does not reflect Dunluce's needs.

Since summer 2022, the Project Team has collected feedback through a variety of ways. Surveys, community conversations, emails and phone calls helped the Project Team understand what is important to community members in Dunluce, as well as the impact of design decisions. Early public input helped develop the project Vision and Guiding Principles. Those, along with ongoing public engagement, guided design and budget decisions.

Council-approved policies, technical requirements and available funding are factors that guide Neighbourhood Renewal design decisions. This results in the best fiscal and design outcomes for your neighbourhood and our city. Public input is important and valued. It is used in decision making where possible, but cannot override the other factors.

You may not see all your ideas reflected in the final design as it is not possible to meet every need. We want you to know we heard all the input shared by residents in Dunluce and we have incorporated feedback where possible.

Final design for Dunluce

The following summarizes comments that showed both the support and concerns that were heard.

Support

Participants appreciate measures that improve accessibility, walkability pedestrian safety and mobility including:

- + Widened sidewalk
- + Additional shared pathways
- + Curb extensions
- + Wheelchair curb ramps

Participants value traffic calming measures that improve safety by slowing traffic including:

- + Narrowed roads
- + Raised crosswalks

Participants are positive about the aesthetic and functional improvements including:

- + Renewed roads
- + New and renewed pathways
- + Better lighting in parks
- + Better school access
- + Minimal impact to green spaces

Participants like measures that improve connections for those who walk, bike and use strollers or mobility aids including:

- + New and renewed pathways
- + Shared-use paths

Concerns

Participants oppose measures that narrow the roadway due to anticipated issues with:

- + Snow removal
- + Emergency vehicle access
- + Increased traffic congestion

Participants indicate widespread concern with measures that reduce on-street parking suggesting it will result in:

- + Issues near schools, condominiums and high-density housing areas
- + Negative impacts to visitors, seniors and multi-family households

Participants don't support active transportation infrastructure, as they feel:

- + It will be underutilized in the neighbourhood
- + It is unsuitable for winter conditions

Participants are concerned with the potential financial impacts of Neighbourhood and Alley Renewal including:

- + Increased property taxes
- + Out-of-pocket costs for residents, particularly seniors and low-income households
- + Measures that prioritize 'unnecessary features' over essential repairs

Participants oppose green space impacts including:

- + Removal of mature trees

Participants are frustrated with the consultation process including the perception the City:

- + Ignored input received from residents
- + Prepared a design that doesn't reflect the community's needs

Vision and Guiding Principles

- + Many respondents feel the final design did not align with the Vision and Guiding Principles for the neighbourhood

Preparing for Construction

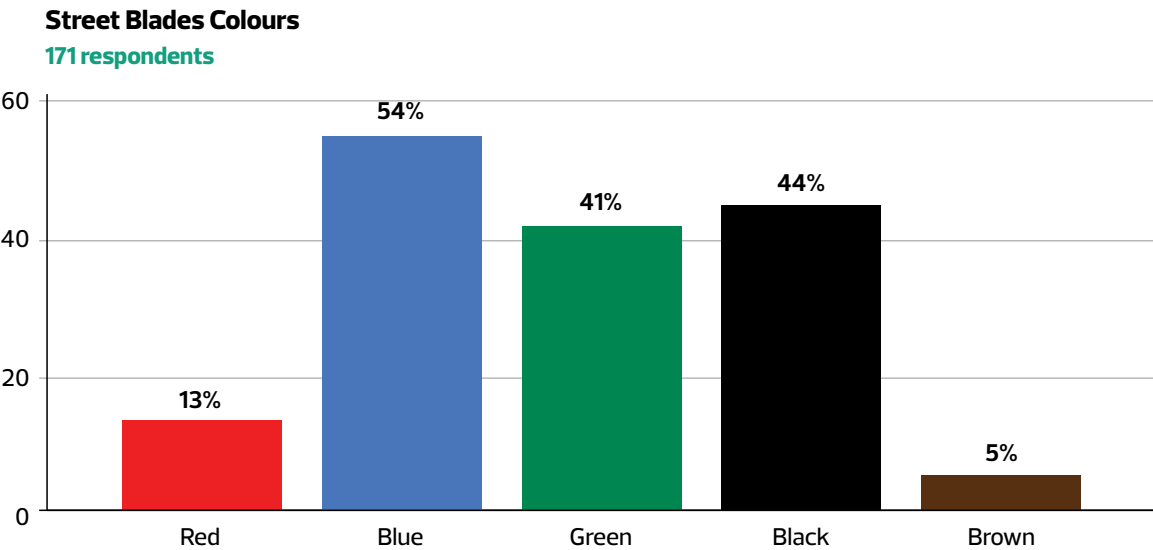
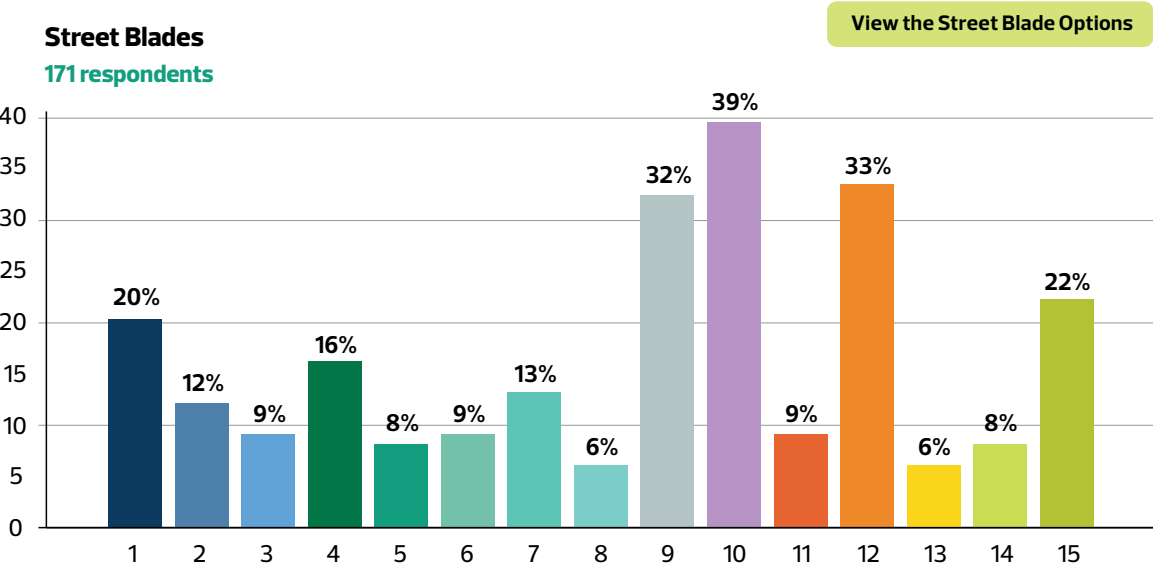
Respondents were asked to share anything they feel the Project Team should be aware of as they prepare for construction in Dunluce. What we heard is summarized below:

- + Respondents are worried about accessibility to their homes and parking during construction, particularly for those with mobility challenges, small businesses, or daycare operations and areas of high-density housing
- + Concerns about construction noise, dust and blocked roads are prevalent
- + There are requests for better communication about construction timelines and coordination (e.g., ensuring alley and front roadwork don't happen simultaneously)
- + Some would like information about garbage collection when alleys are under construction
- + Some respondents wonder how pedestrian and driver safety will be maintained
- + Some question how construction will impact parking around highly used sports fields for spring/summer activities



Decorative street blades

As part of Neighbourhood and Alley Renewal, the community has the option to choose decorative street blades throughout the neighbourhood at no additional cost to property owners. The charts below show respondents' preferences for street blade design and colour.



Next steps

The Preparing for Construction stage will start in June 2025. At that time, the Project Team will return to the community to share construction information.

For more information regarding the Dunluce Neighbourhood and Alley Renewal, upcoming public activities and to subscribe for project updates, please visit edmonton.ca/BuildingDunluce. Emailed project updates continue throughout construction.

Working together to make the most out of your neighbourhood.

This is your city and your neighbourhood. We want to understand how you experience your neighbourhood and ask for your input on what we might do to make it better. We will engage and work with you on the renewal of roads, sidewalks, street lights and park spaces. We will also promote other community opportunities to enhance how people live and interact in your neighbourhood. We commit to being open and transparent about how your input is used. Let's make the most out of your neighbourhood.

edmonton.ca/BuildingDunluce

SHARE YOUR VOICE
SHAPE OUR CITY

Edmonton