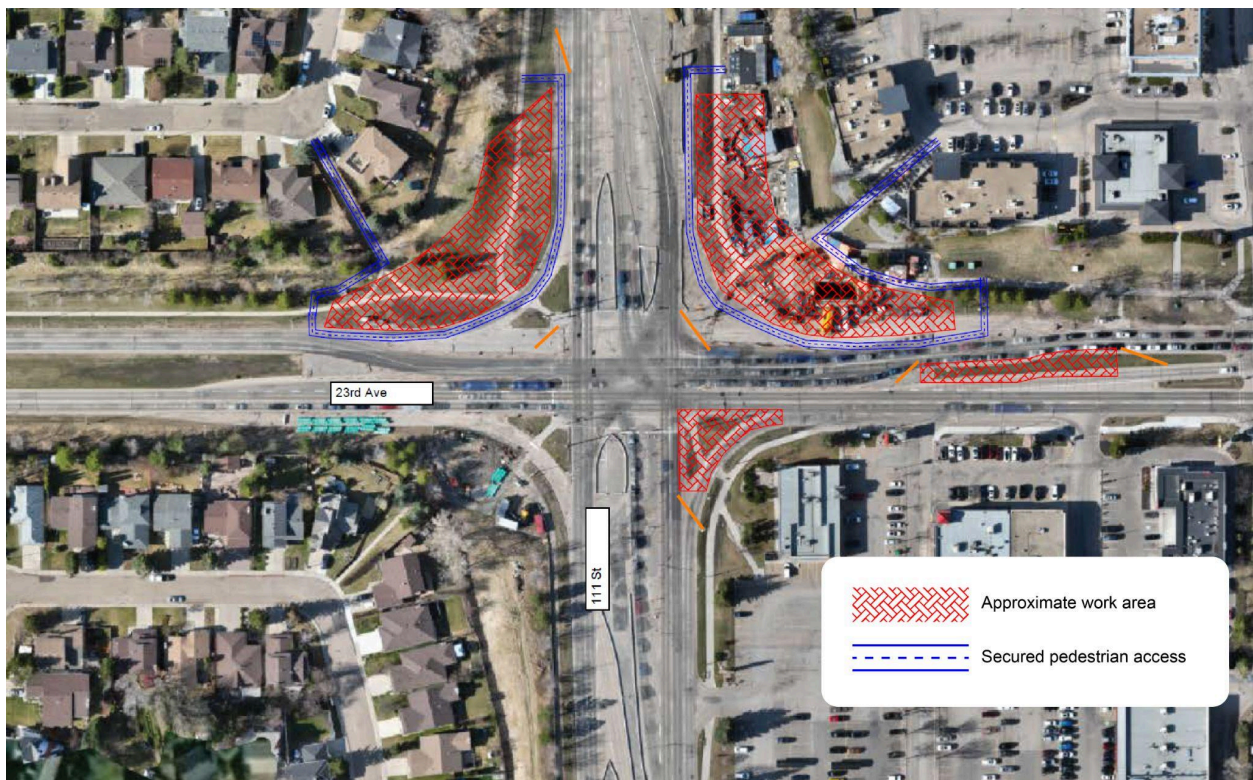


## Construction Notice - Ledcor set to begin preparatory work along the LRT alignment

### Updated Work Schedule at OMF

#### 23 Avenue and 111 Street Intersection

Starting in early October, Ledcor, the main Design-Build contractor for the project, will begin work at the 23 Avenue and 111 Street intersection in preparation for the future LRT underpass. This work will be completed in three phases and is expected to take roughly **eight weeks**. The first phase of work will begin in the northwest corner, where approximately 10-15 trees of various sizes will be removed in order to build a pedestrian detour. The last two phases of work will be in the northeast corner, and then the southeast corner. Please see the map below for further details about the work areas.



## Traffic Lane Restrictions and Changes

- In collaboration with EllisDon, the City's early works contractor on the project, the following traffic lane restrictions/changes will occur, as required, at the 23 Avenue and 111 Street intersection throughout the **eight weeks** of work:
  - All right turn lanes will be closed, except the eastbound to southbound turning lane from 23 Avenue to 111 Street.
  - Left turn movements for vehicles will be maintained in all directions.
  - Southbound and northbound lanes will be reduced to one lane in each direction as a result of EllisDon's work. Additional southbound and northbound lanes are anticipated to reopen in mid/late October.

## Pedestrian Detours

- Pedestrians will be redirected onto a temporary walkway at the northwest and northeast corners of the intersection.
- Hard-surfaced paths/ramps will be installed at curbs to provide barrier-free access.
- Pedestrian access to adjacent neighbourhoods is subject to change due to work zone requirements, but access will be maintained throughout construction.

## Other Impacts

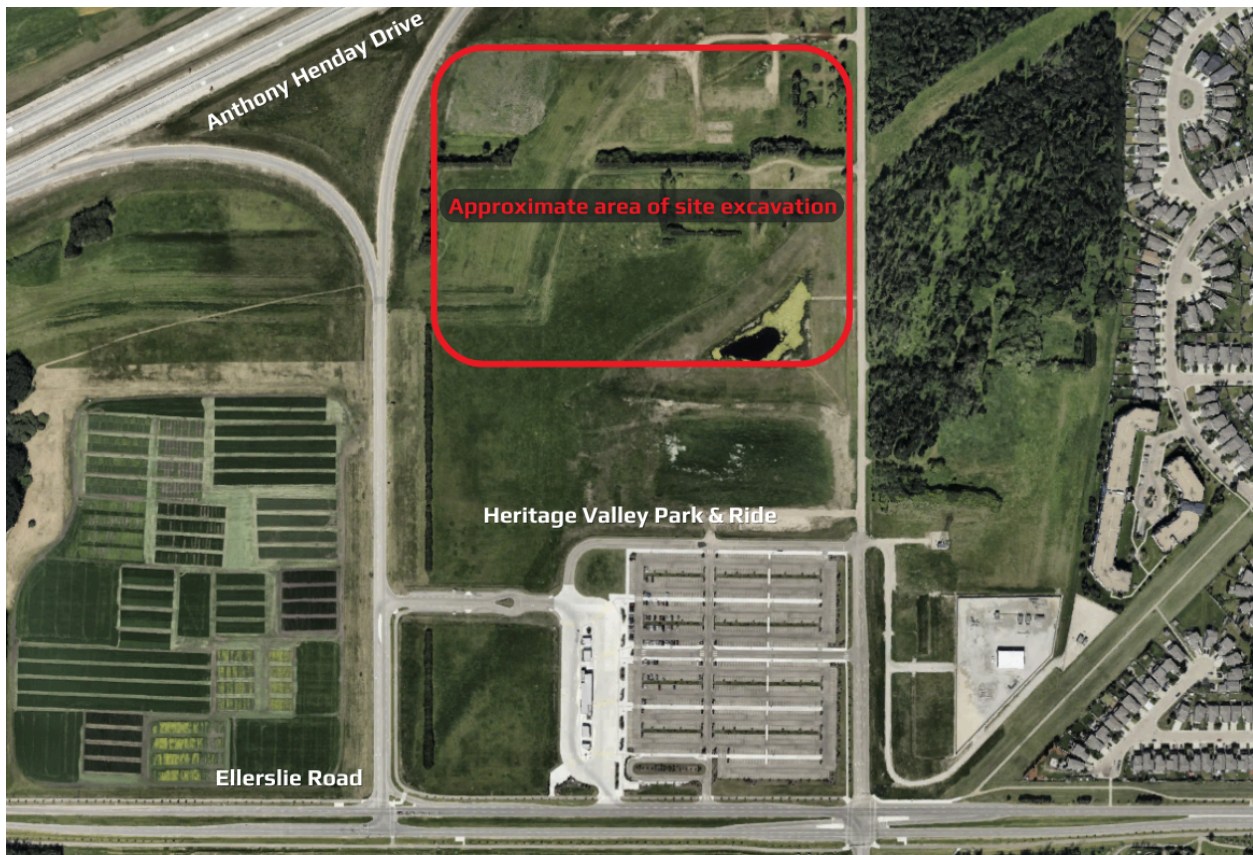
- Work will take place mainly on weekdays between 7:00 a.m. and 5:00 p.m.
- Some work may occur on Saturdays, depending on the weather.
- Mitigation measures will be in place to minimize noise, dust and vibration.
- The temporary bus stop on the northwest corner of the intersection will be maintained.

## **Excavation at Operations and Maintenance Facility (OMF)**

Beginning on/around **October 19**, Ledcor will start excavation seven days a week for the foundation of the Llew Lawrence Operations and Maintenance Facility (OMF) north of the Heritage Valley Park & Ride. This work will continue until the ground freezes. Please refer to the map below for the location of construction.

- Work will take place on weekdays, Saturdays and some Sundays between 7:00 a.m. and 5:00 p.m.

- No lane closures or traffic disruptions are expected.
- Heavy truck traffic will continue around the Heritage Valley Park & Ride.
- Noise will be associated with this work. Mitigation measures are incorporated into work plans and construction activities whenever possible. Engineers and safety professionals monitor noise conditions to ensure sound levels remain safe.
- Ledcor follows the City's [Community Standards Bylaw](#) for construction noise.



## For More Information

**City of Edmonton** (general project inquiries)

Visit: [edmonton.ca/capitalsw](https://edmonton.ca/capitalsw)

Email: [lrtprojects@edmonton.ca](mailto:lrtprojects@edmonton.ca)

Call: LRT Projects Information Centre at 780-496-4874 (voicemail)

**Ledcor Group of Companies** (construction-specific inquiries)

Email: [capitallinesouth@ledcor.com](mailto:capitallinesouth@ledcor.com)

Call: Capital Line South public inquiry line at 780-540-7013 (voicemail)