

2023 NEIGHBOURHOOD STUDY AREAS

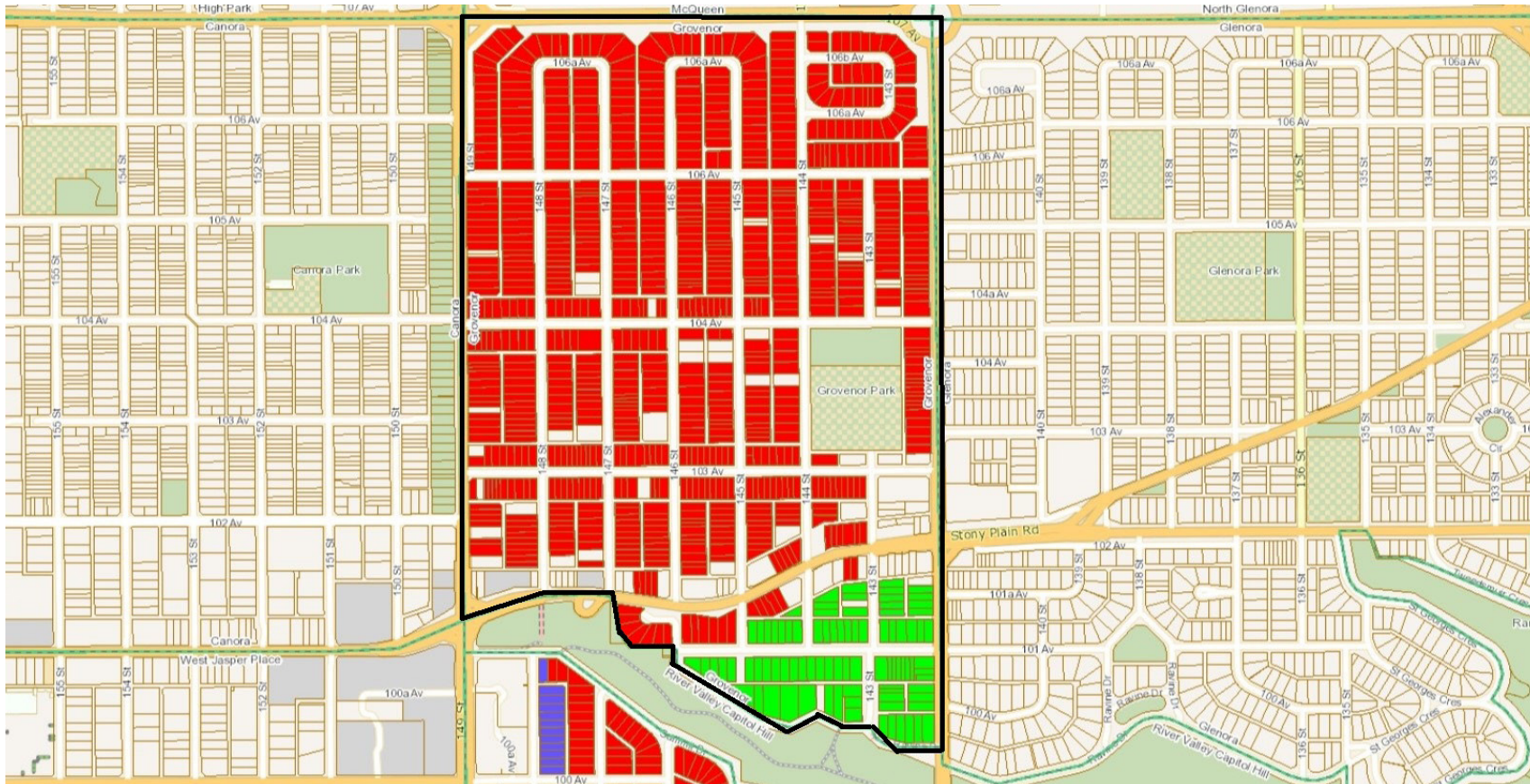
RESIDENTIAL

INDEX

Study Area No.	Neighbourhood	Page No.
2101	Grovenor, Crestwood, Parkview, Laurier Heights	3–6
2102	Grovenor, Crestwood, Parkview, Laurier Heights	3–6
2103	Athlone	7
2104	Terwillegar Towne	8
2107	Summerside	9
2108	Summerside	9
2109	Summerside	9
2110	Summerside	9
2112	Donsdale	10
2129	Aspen Gardens, Westbrook Estates	11
2130	Westbrook Estates	11
2210	Mactaggart	13
2500	Belgravia	14
3004	Glenora	15
3014	Glenora	15
3019	Terwillegar Towne, South Terwillegar	8
3023	Glenora	15
3040	Westmount	16
3090	Rundle Heights	17
3101	Strathcona	18
3200	Wedgewood Heights	10
3201	Wedgewood Heights, Cameron Heights	10
3203	Highlands, Capilano, Gold Bar	19
3204	Ambleside	20
3205	Windsor Park	21
3206	Ramsay Heights	22
3208	Bellevue, Highlands, Beverly Heights	23–25
3209	Windermere	26–28
3212	Rhatigan Ridge	29–30
3213	South Terwillegar	13

3217	Rio Terrace and Quesnell Heights	31
3220	Windermere	26–27
3221	Windermere	27
3222	Windermere	31
3223	Belgravia	14
3224	Brookside	32
3225	Rhatigan Ridge	29–30
3226	Henderson Estates	29–30
3227	Rio Terrace	33
3228	Oleskiw	34
3229	Oleskiw	34
3230	Cameron Heights	35
3231	Forest Heights	36
3232	Ottewell	37
3233	McKernan	38
3234	Suder Greens	39
3235	Eastwood	40
3236	Magrath Heights	41
3237	The Hamptons	42
3238	Belle Rive, Eaux Claires	43
3239	King Edward Park	44
3242	Kernohan	45
3243	Pleasantview	46
3244	Westridge	47
3246	Homesteader, Overlanders	48
3247	Laurel	49
3250	Crestwood, Parkview	4–5
3251	Prince Rupert	50
3252	Bearspaw	51
3253	Terwillegar Towne	52
3254	Summerside	9
3255	Mactaggart	13
4001	Magrath Heights	41

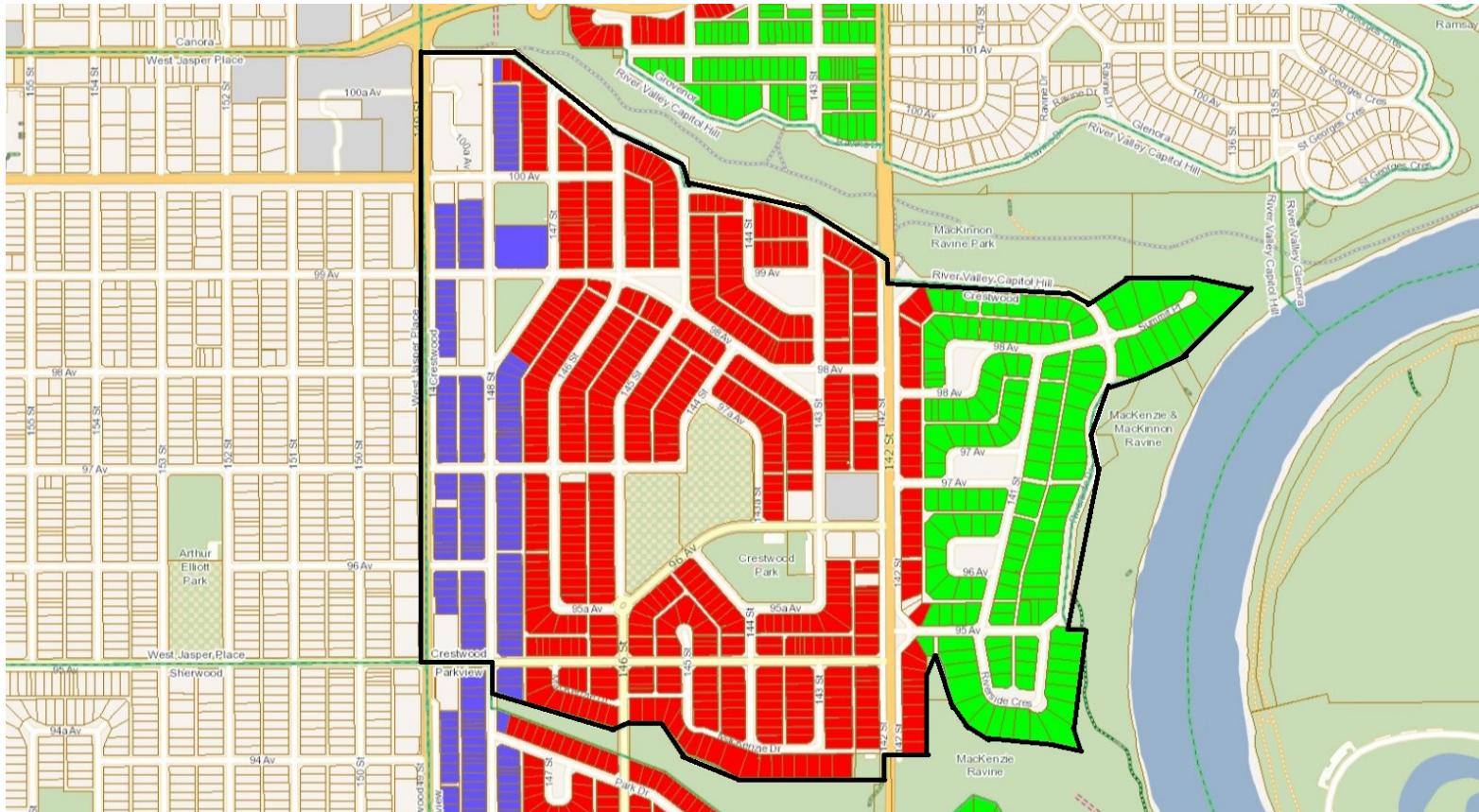
Study Area 2101/2102: Grovenor, Crestwood, Parkview and Laurier Heights






- Grovenor North (2101)
- Grovenor South (2102)
- 149 Street East (3250)

The information provided by this map is for reference purpose only. The City of Edmonton disclaims any liability for the use of this map. This map may not be published, broadcast, redrawn or redistributed in whole or in part without the express written permission of the City of Edmonton, Financial and Corporate Services Department. All rights reserved. Copyright © 2021 The City of Edmonton

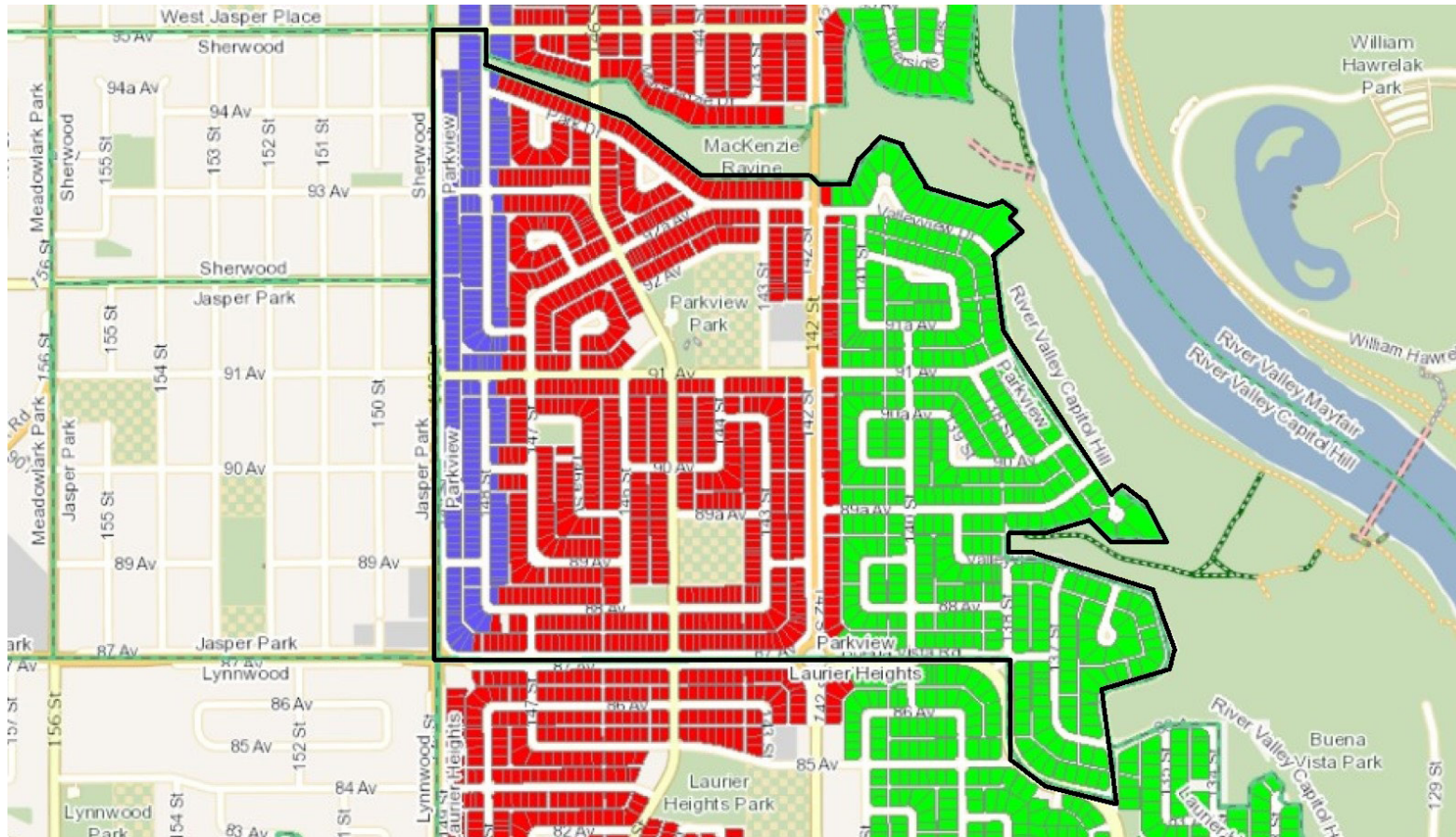
Study Area 2101/2102/3250: Grovenor, Crestwood, Parkview and Laurier Heights

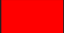




-  Crestwood North (2101)
-  Crestwood South (2102)
-  149 Street East (3250)

The information provided by this map is for reference purpose only. The City of Edmonton disclaims any liability for the use of this map. This map may not be published, broadcast, redrawn or redistributed in whole or in part without the express written permission of the City of Edmonton, Financial and Corporate Services Department. All rights reserved. Copyright © 2021 The City of Edmonton

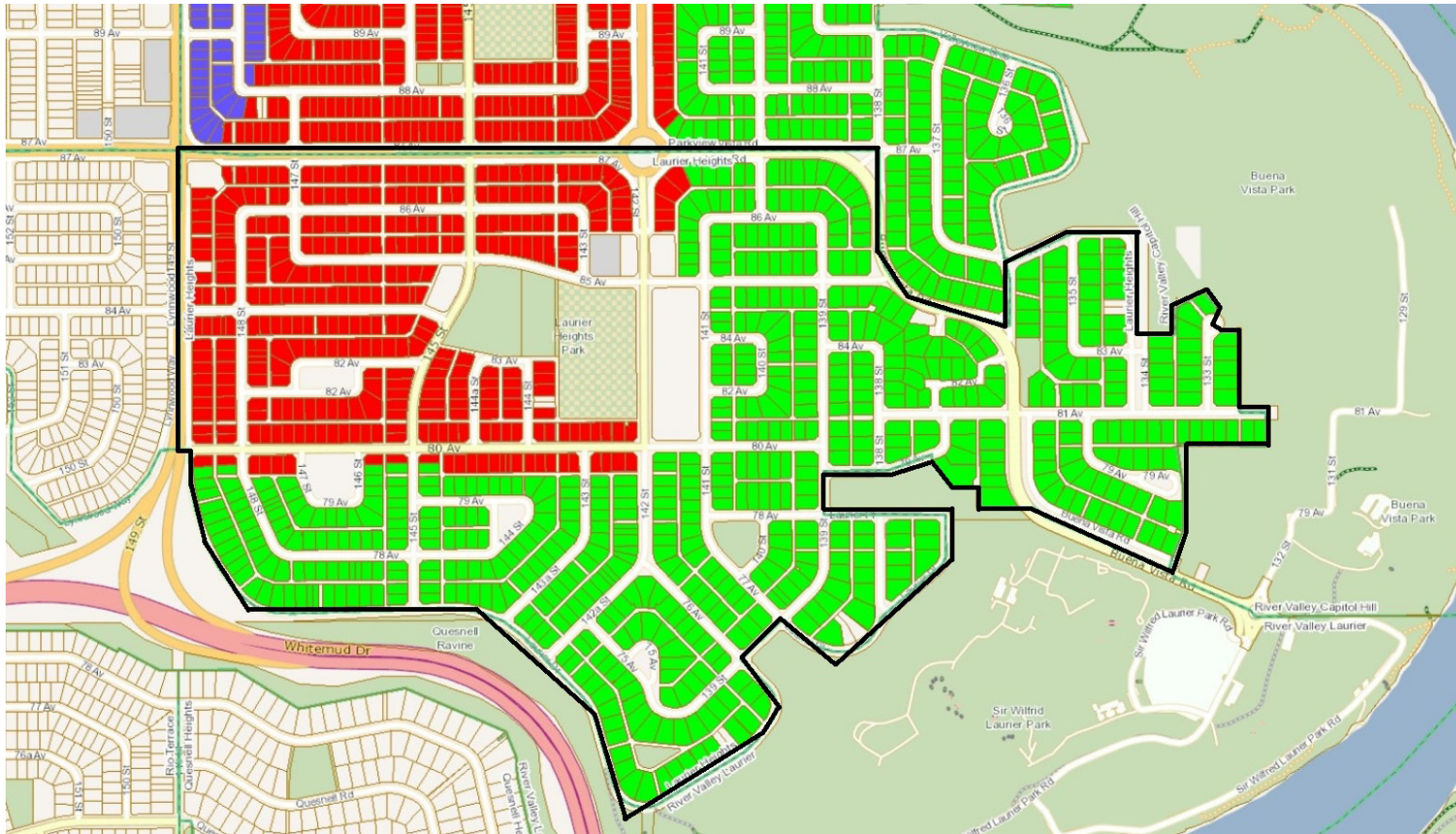
Study Area 2101/2102/3250: Grovenor, Crestwood, Parkview and Laurier Heights






-  Parkview West (2101)
-  Parkview East (2102)
-  149 Street East (3250)

The information provided by this map is for reference purpose only. The City of Edmonton disclaims any liability for the use of this map. This map may not be published, broadcast, redrawn or redistributed in whole or in part without the express written permission of the City of Edmonton, Financial and Corporate Services Department. All rights reserved. Copyright © 2021 The City of Edmonton

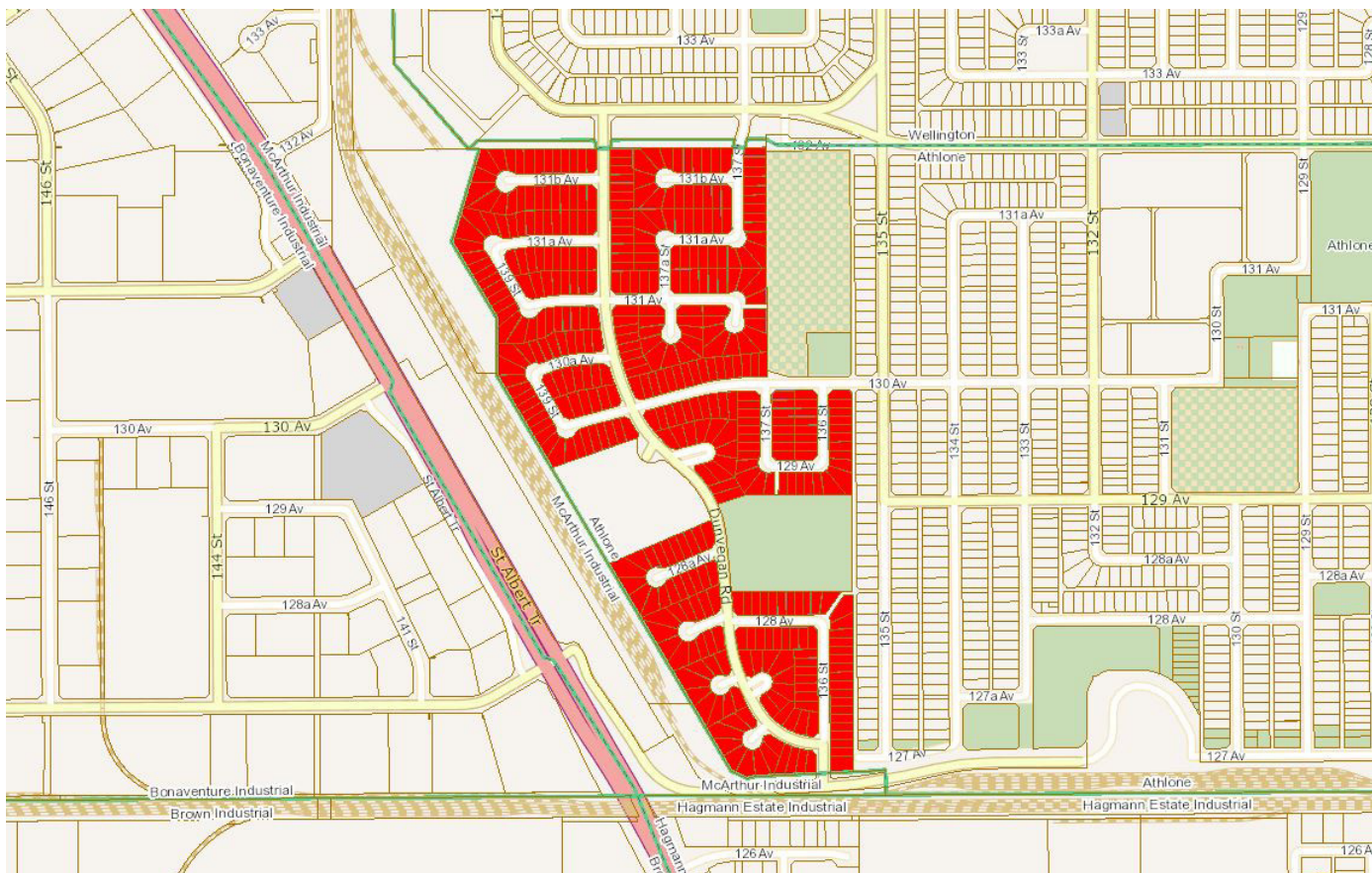
Study Area 2101/2102: Grovenor, Crestwood, Parkview and Laurier Heights




-  Laurier Heights North/West (2101)
-  Laurier Heights South/East (2102)
-  149 Street East (3250)

The information provided by this map is for reference purpose only. The City of Edmonton disclaims any liability for the use of this map. This map may not be published, broadcast, redrawn or redistributed in whole or in part without the express written permission of the City of Edmonton, Financial and Corporate Services Department. All rights reserved. Copyright © 2021 The City of Edmonton

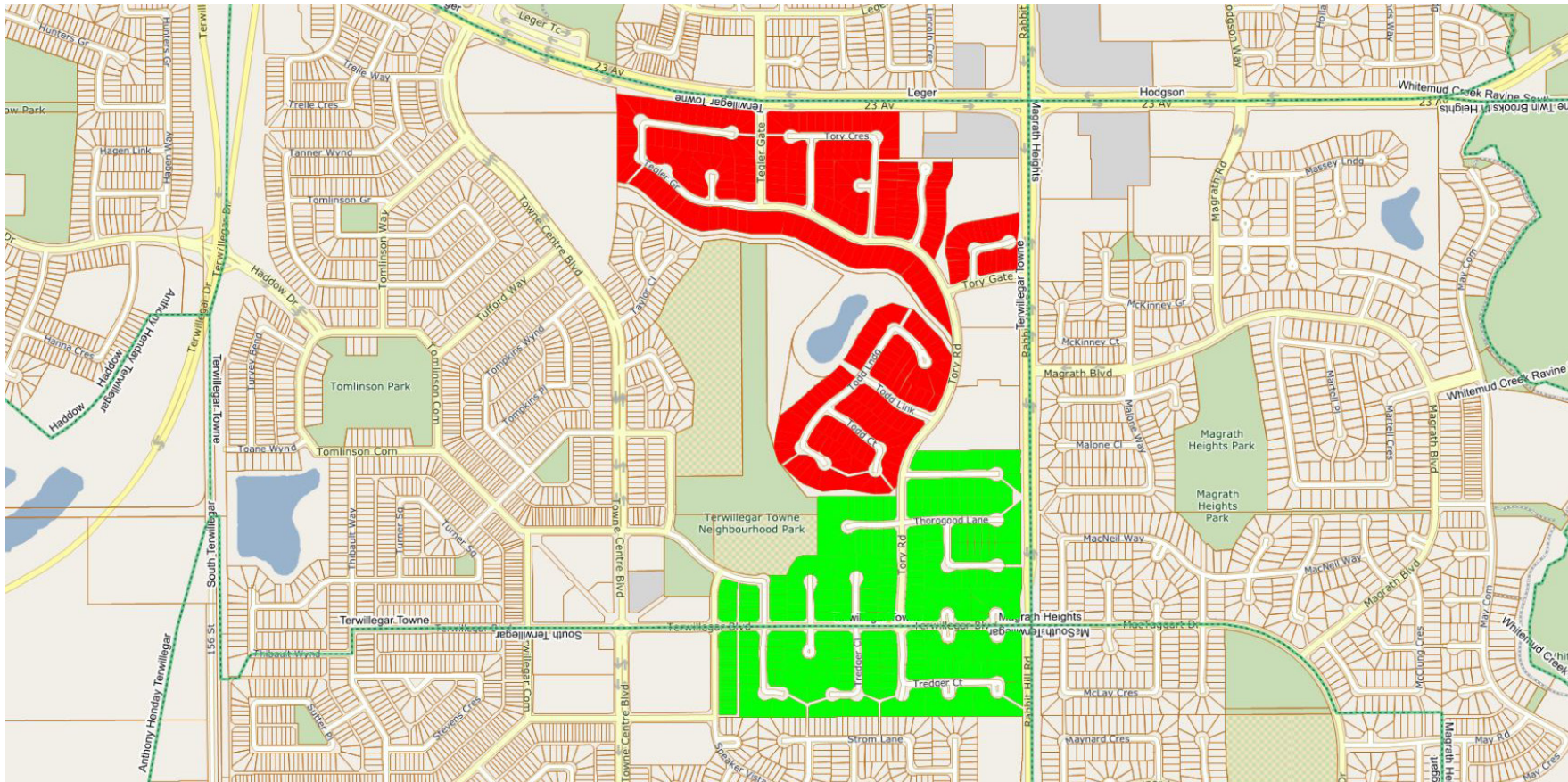
Study Area 2103: Athlone



 Athlone West (2103)

The information provided by this map is for reference purpose only. The City of Edmonton disclaims any liability for the use of this map. This map may not be published, broadcast, redrawn or redistributed in whole or in part without the express written permission of the City of Edmonton, Financial and Corporate Services Department. All rights reserved. Copyright © 2021 The City of Edmonton

Study Area 2104/3019: Terwillegar Towne, South Terwillegar

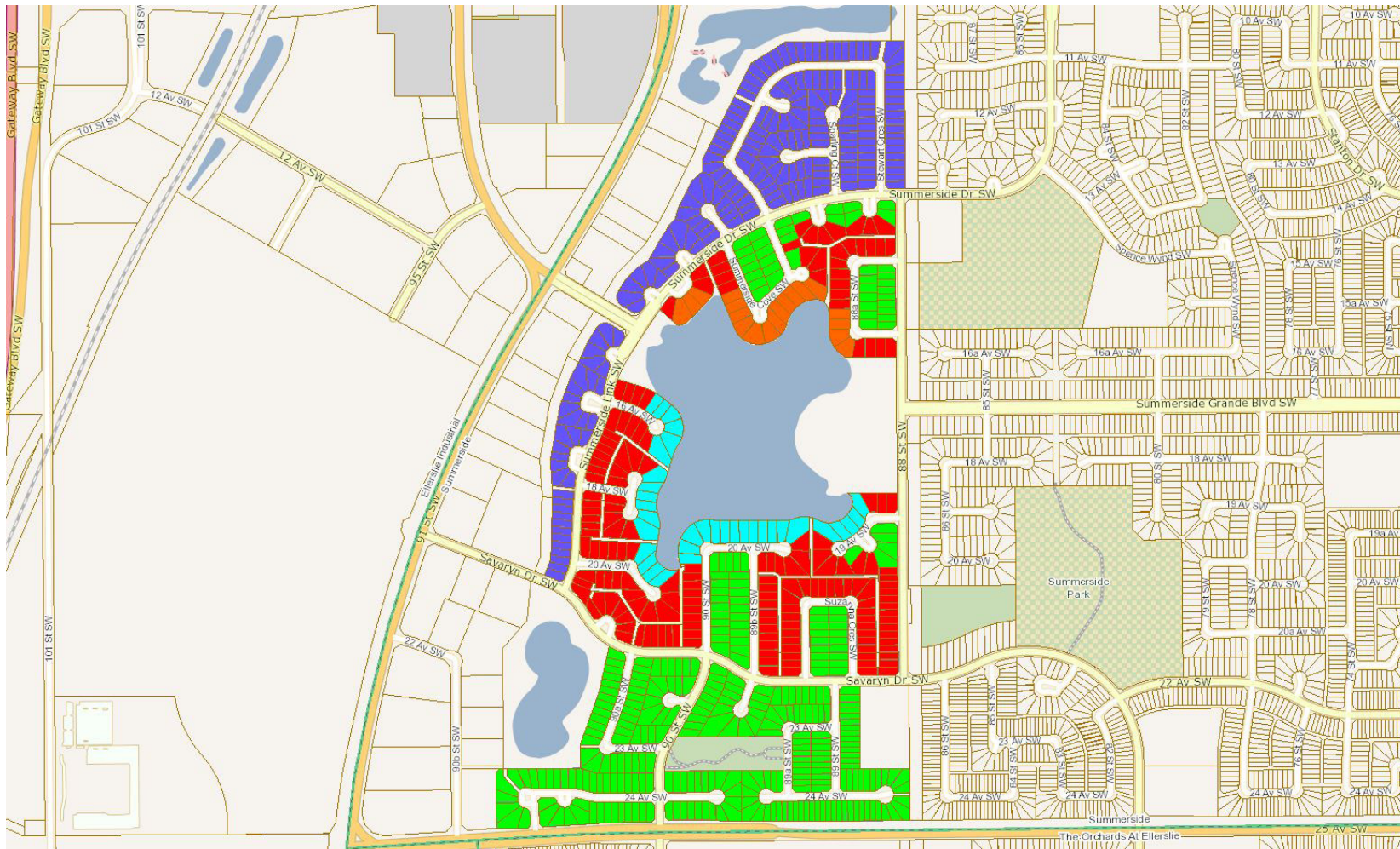


 Terwillegar Gardens North (2104)

 Terwillegar Gardens South (3019)

The information provided by this map is for reference purpose only. The City of Edmonton disclaims any liability for the use of this map. This map may not be published, broadcast, redrawn or redistributed in whole or in part without the express written permission of the City of Edmonton, Financial and Corporate Services Department. All rights reserved. Copyright © 2021 The City of Edmonton

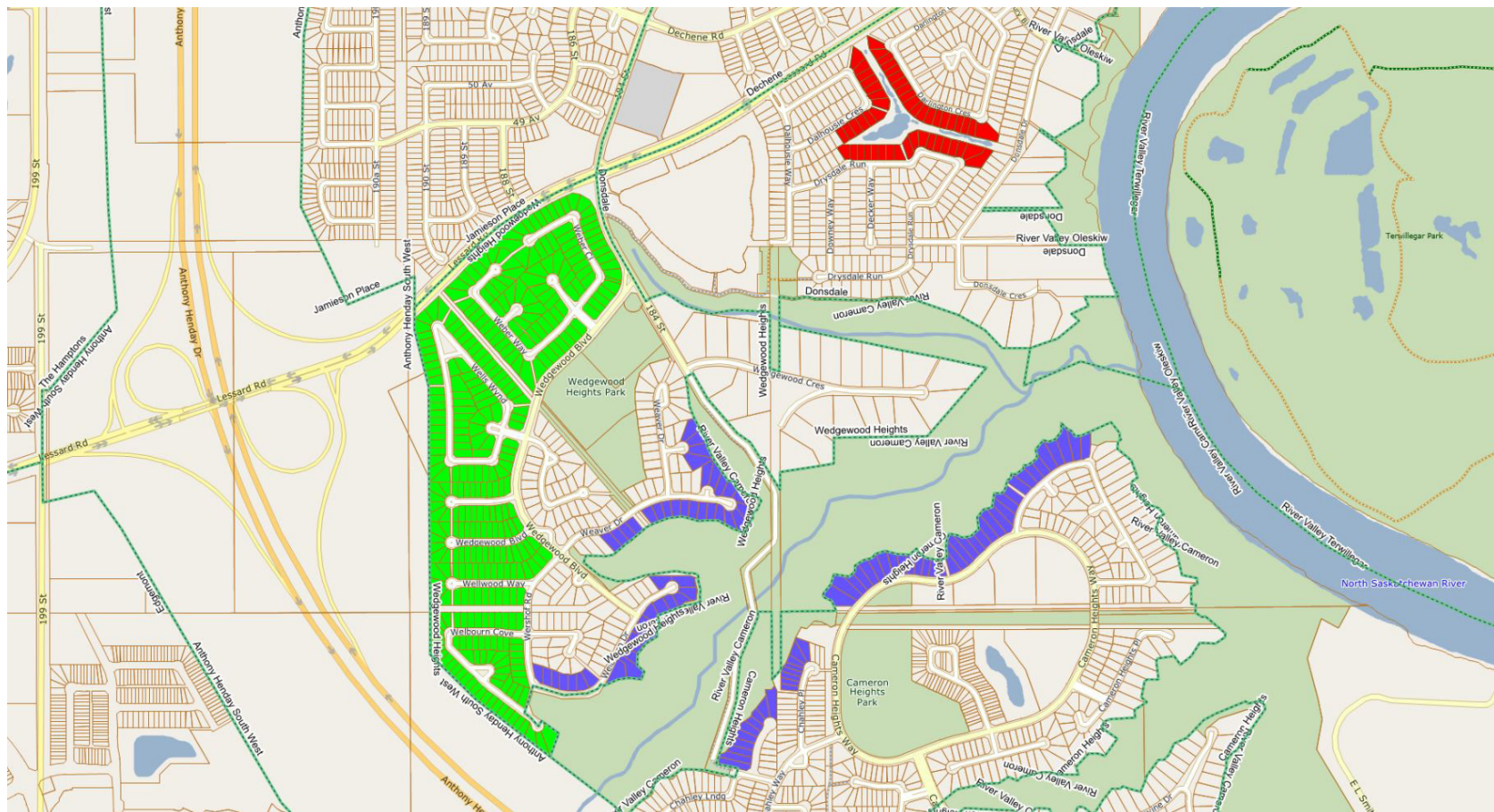
Study Area 2107/2108/2109/2110/3254: Summerside






- Summerside Walkway (2107)
- Summerside Lake South (2109)
- Summerside Lake North (3254)
- Summerside Cove (2108)
- Summerside North (2110)

The information provided by this map is for reference purpose only. The City of Edmonton disclaims any liability for the use of this map. This map may not be published, broadcast, redrawn or redistributed in whole or in part without the express written permission of the City of Edmonton, Financial and Corporate Services Department. All rights reserved. Copyright © 2021 The City of Edmonton

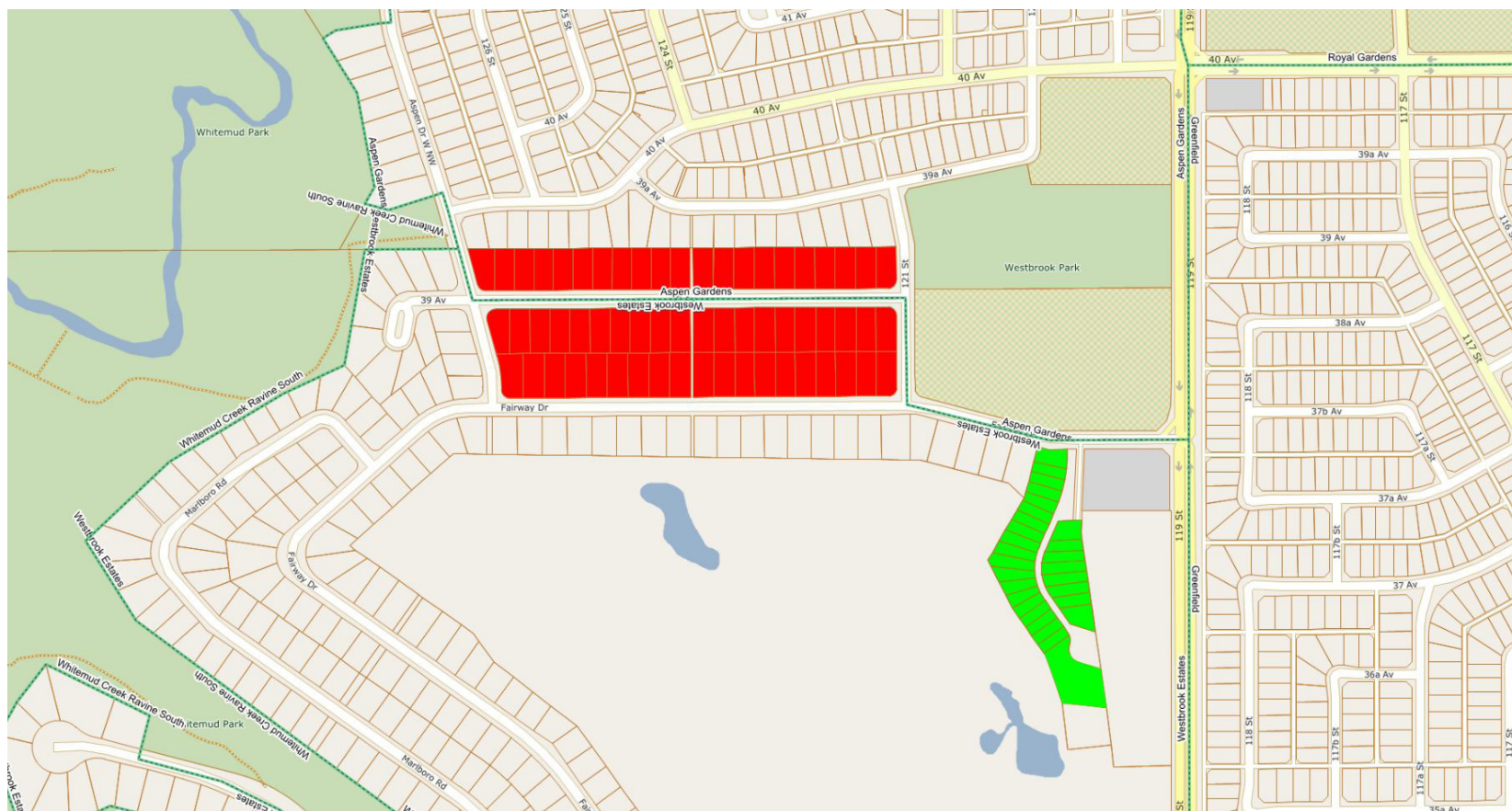
Study Area 2112/3200/3201: Donsdale, Wedgewood Heights, Cameron Heights





-  Donsdale Creek (2112)
-  Wedgewood Heights West (3200)
-  Cameron Heights/Wedgewood Ravine (3201)

The information provided by this map is for reference purpose only. The City of Edmonton disclaims any liability for the use of this map. This map may not be published, broadcast, redrawn or redistributed in whole or in part without the express written permission of the City of Edmonton, Financial and Corporate Services Department. All rights reserved. Copyright © 2021 The City of Edmonton

Study Area 2129/2130: Aspen Gardens, Westbrook Estates




-  Westbrook / Aspen Gardens Split (2129)
-  Ironwood (2130)

The information provided by this map is for reference purpose only. The City of Edmonton disclaims any liability for the use of this map. This map may not be published, broadcast, redrawn or redistributed in whole or in part without the express written permission of the City of Edmonton, Financial and Corporate Services Department. All rights reserved. Copyright © 2021 The City of Edmonton

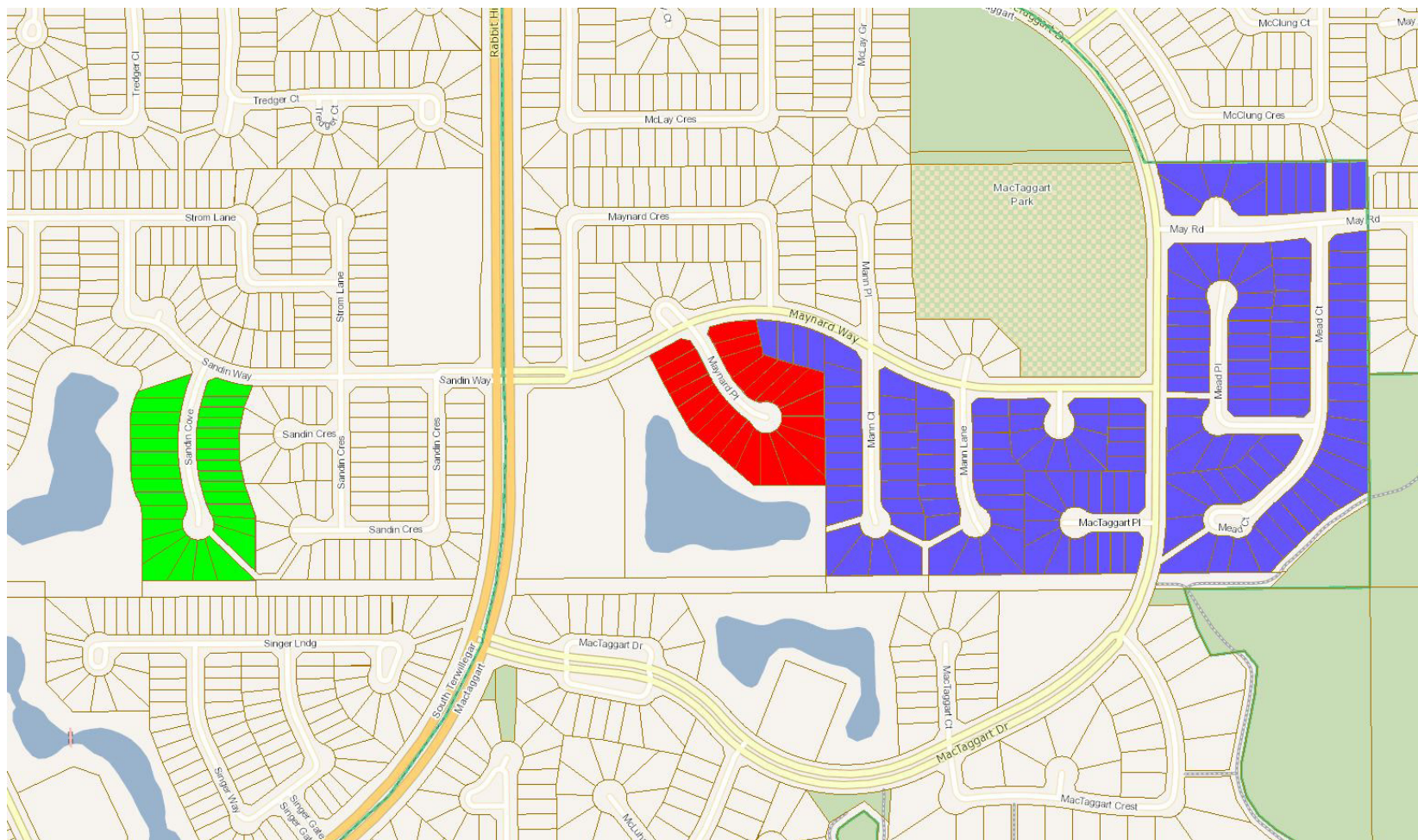
Study Area 2175: Riverdale



 Riverdale (2175)

The information provided by this map is for reference purpose only. The City of Edmonton disclaims any liability for the use of this map. This map may not be published, broadcast, redrawn or redistributed in whole or in part without the express written permission of the City of Edmonton, Financial and Corporate Services Department. All rights reserved. Copyright © 2021 The City of Edmonton

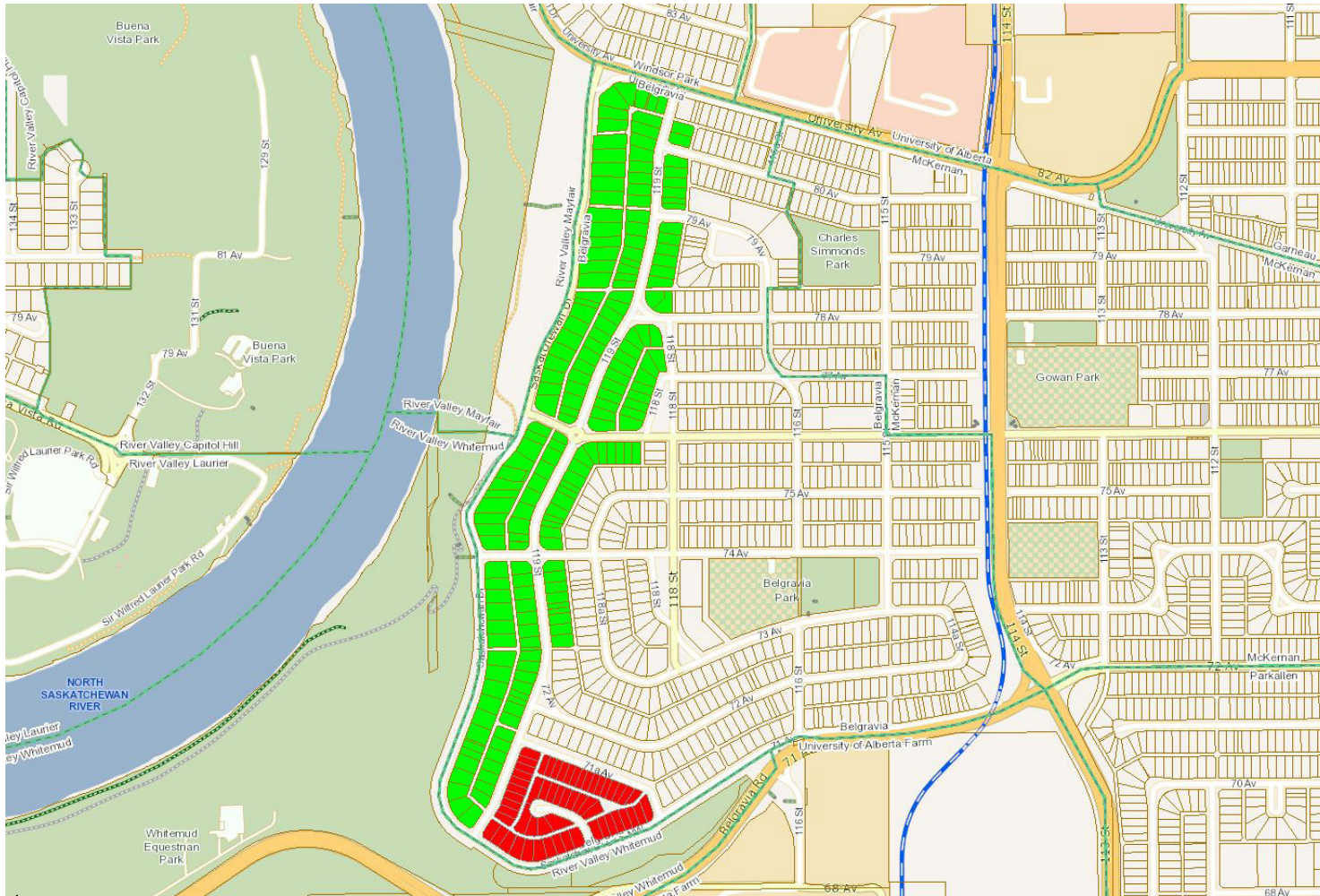
Study Area 2210/3213/3255: Mactaggart and South Terwillegar




-  Maynard Point South (2210)
-  Sandin Cove (3213)
-  Mactaggart Northeast (3255)

The information provided by this map is for reference purpose only. The City of Edmonton disclaims any liability for the use of this map. This map may not be published, broadcast, redrawn or redistributed in whole or in part without the express written permission of the City of Edmonton, Financial and Corporate Services Department. All rights reserved. Copyright © 2021 The City of Edmonton

Study Area 2500/3223: Belgravia

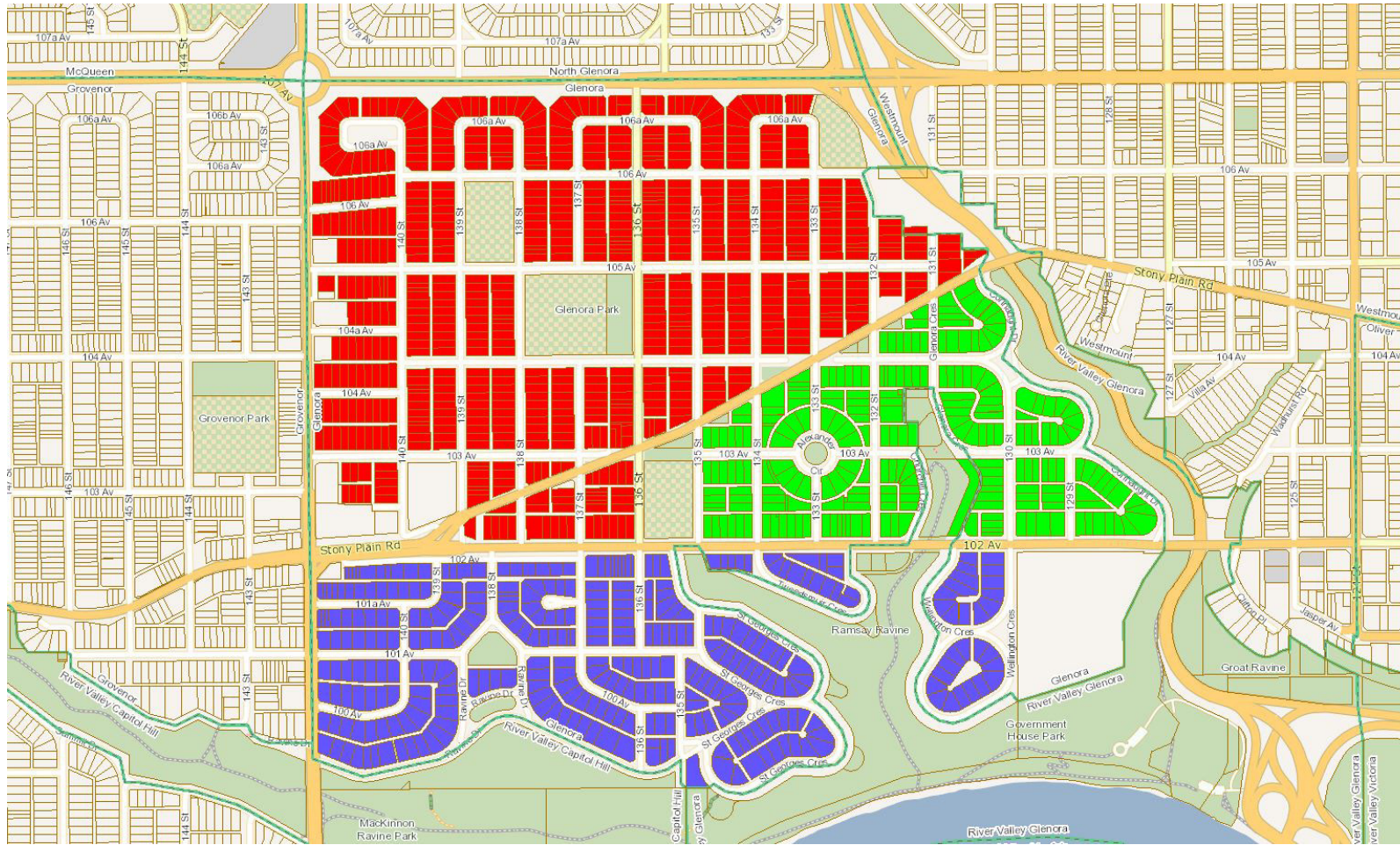


 Belgravia South (2500)

 Belgravia West (3223)

The information provided by this map is for reference purpose only. The City of Edmonton disclaims any liability for the use of this map. This map may not be published, broadcast, redrawn or redistributed in whole or in part without the express written permission of the City of Edmonton, Financial and Corporate Services Department. All rights reserved. Copyright © 2021 The City of Edmonton

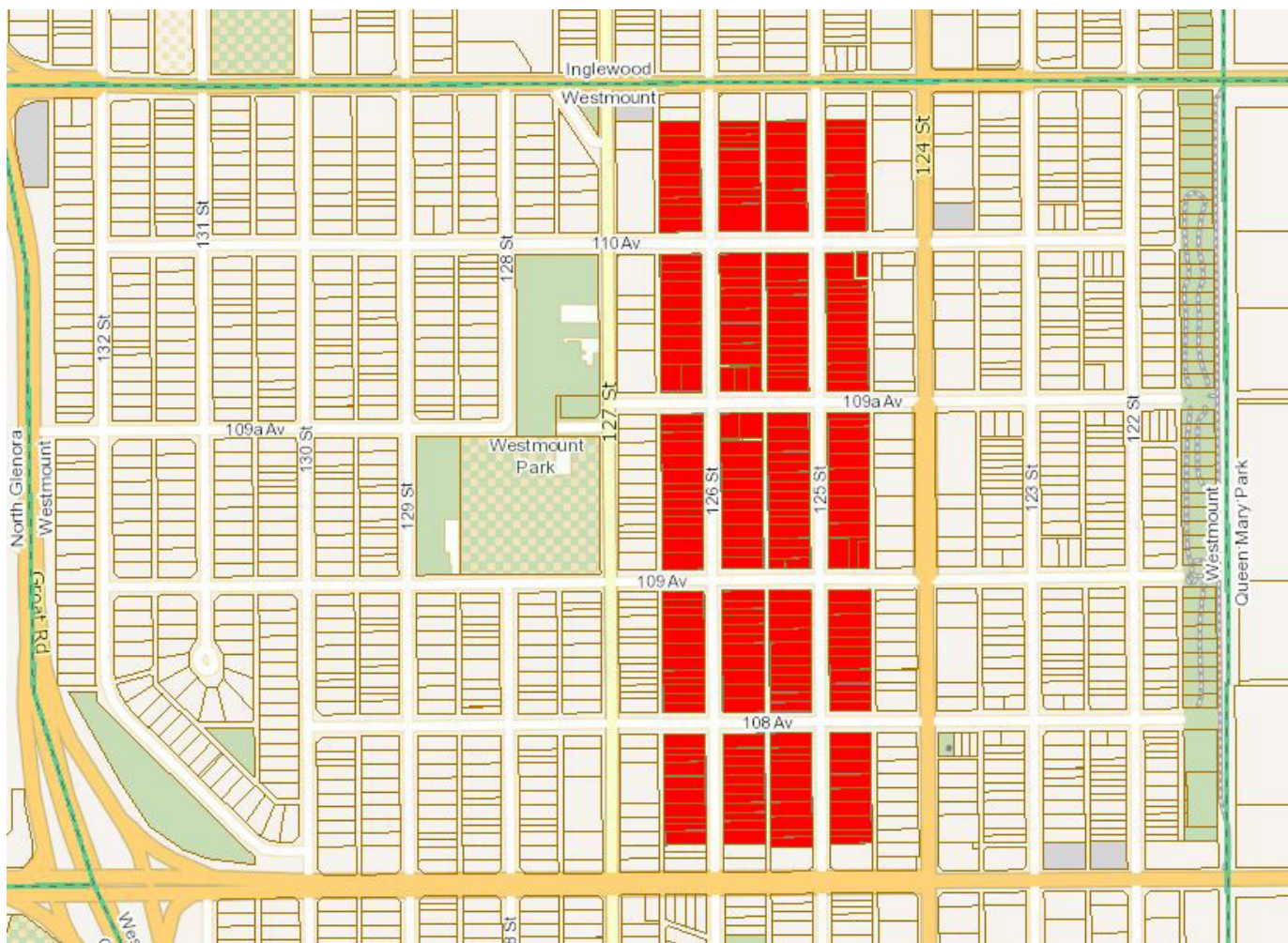
Study Area 3004/3014/3023: Glenora




- Glenora North (3004)
- Glenora South (3023)
- Glenora East (3014)

The information provided by this map is for reference purpose only. The City of Edmonton disclaims any liability for the use of this map. This map may not be published, broadcast, redrawn or redistributed in whole or in part without the express written permission of the City of Edmonton, Financial and Corporate Services Department. All rights reserved. Copyright © 2021 The City of Edmonton

Study Area 3040: Westmount



 Westmount Heritage (3040)

The information provided by this map is for reference purpose only. The City of Edmonton disclaims any liability for the use of this map. This map may not be published, broadcast, redrawn or redistributed in whole or in part without the express written permission of the City of Edmonton, Financial and Corporate Services Department. All rights reserved. Copyright © 2021 The City of Edmonton

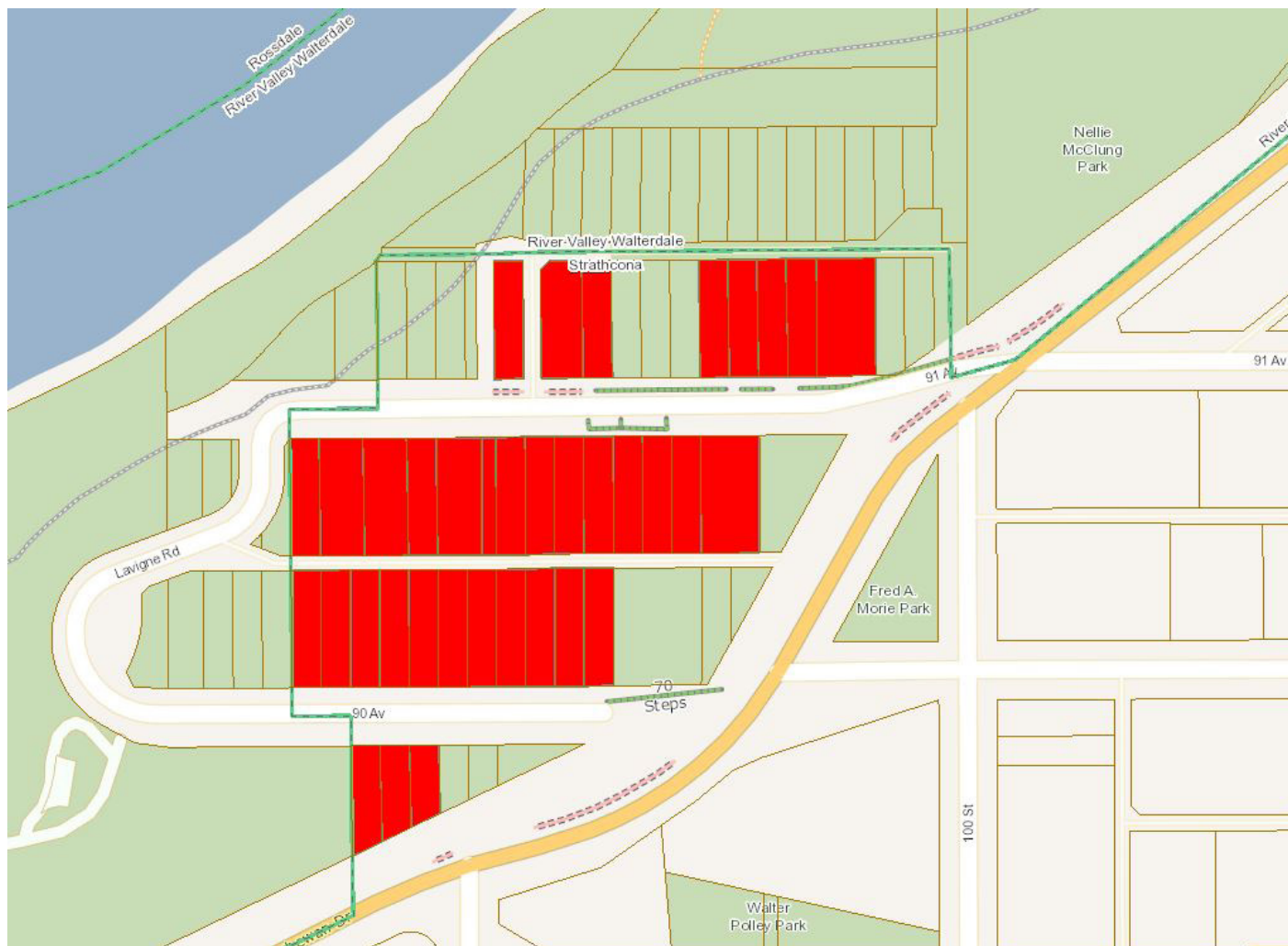
Study Area 3090: Rundle Heights




 Rundle South (3090)

The information provided by this map is for reference purpose only. The City of Edmonton disclaims any liability for the use of this map. This map may not be published, broadcast, redrawn or redistributed in whole or in part without the express written permission of the City of Edmonton, Financial and Corporate Services Department. All rights reserved. Copyright © 2021 The City of Edmonton

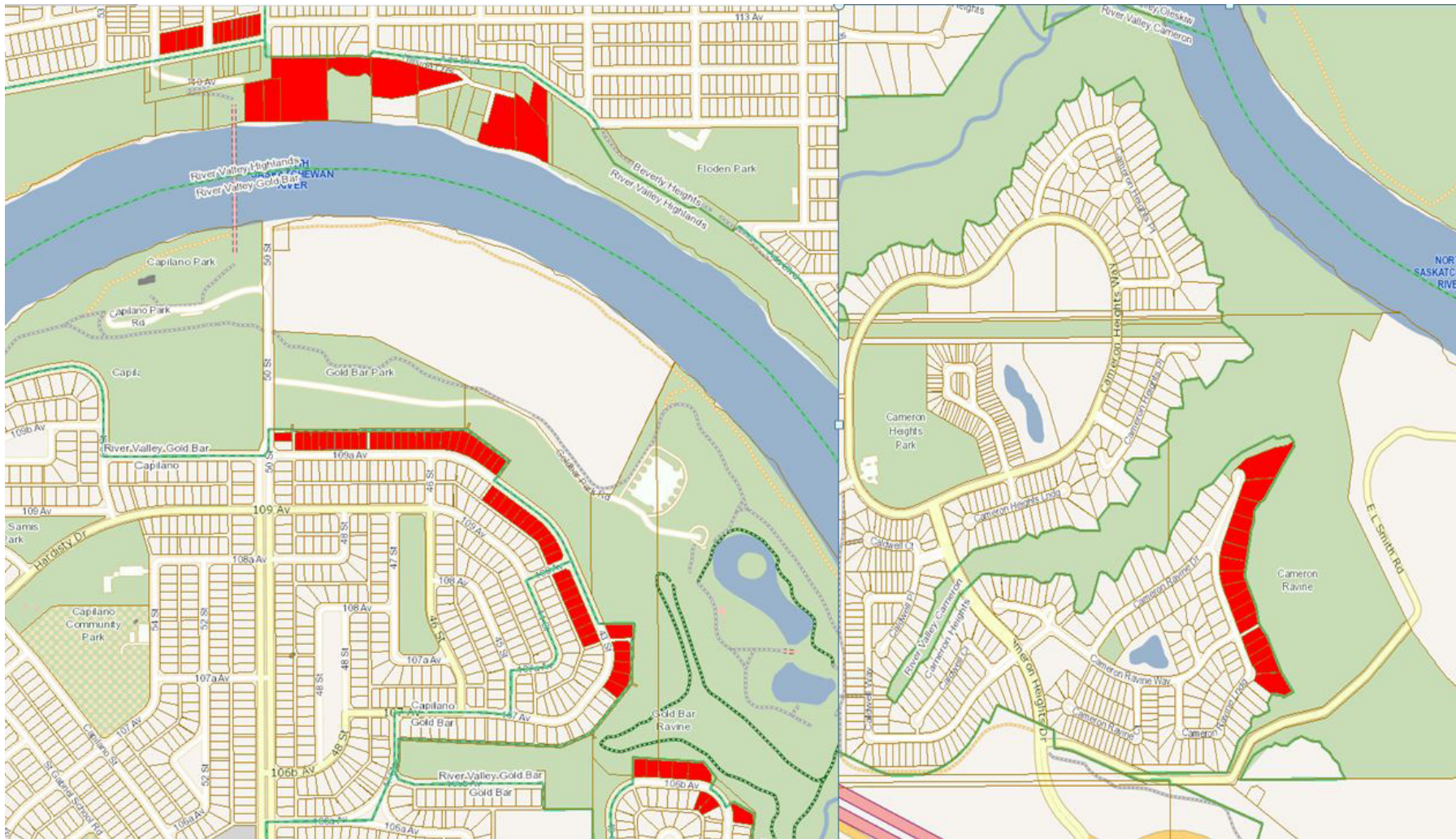
Study Area 3101: Skunk Hollow




 Skunk Hollow (3101)

The information provided by this map is for reference purpose only. The City of Edmonton disclaims any liability for the use of this map. This map may not be published, broadcast, redrawn or redistributed in whole or in part without the express written permission of the City of Edmonton, Financial and Corporate Services Department. All rights reserved. Copyright © 2021 The City of Edmonton

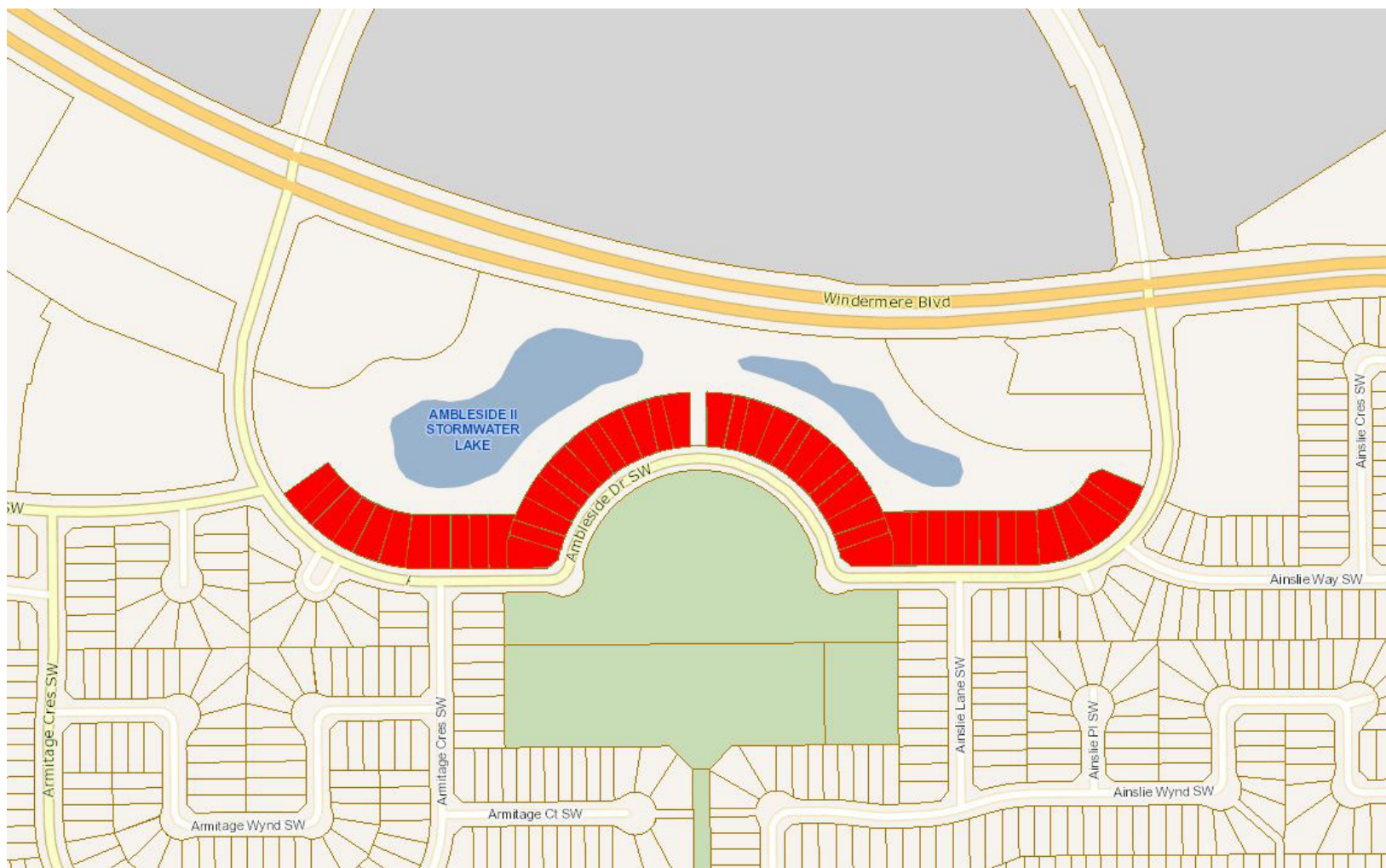
Study Area 3203: Highlands, Capilano, Goldbar, Cameron Heights




 Highlands, Capilano, Goldbar, and Cameron Heights - River Valley & Water Treatment Plant (3203)

The information provided by this map is for reference purpose only. The City of Edmonton disclaims any liability for the use of this map. This map may not be published, broadcast, redrawn or redistributed in whole or in part without the express written permission of the City of Edmonton, Financial and Corporate Services Department. All rights reserved. Copyright © 2021 The City of Edmonton

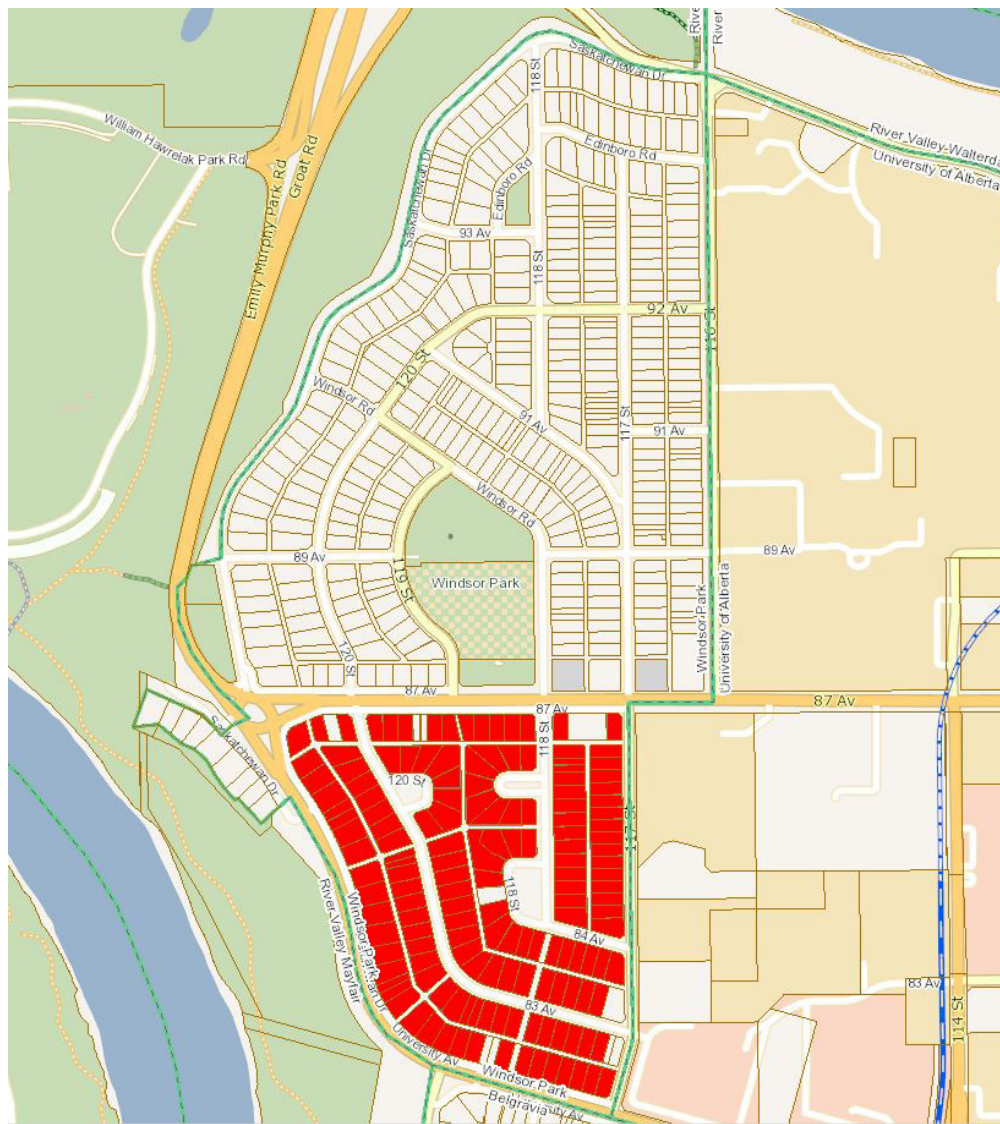
Study Area 3204: Ambleside




 Ambleside (3204)

The information provided by this map is for reference purpose only. The City of Edmonton disclaims any liability for the use of this map. This map may not be published, broadcast, redrawn or redistributed in whole or in part without the express written permission of the City of Edmonton, Financial and Corporate Services Department. All rights reserved. Copyright © 2021 The City of Edmonton

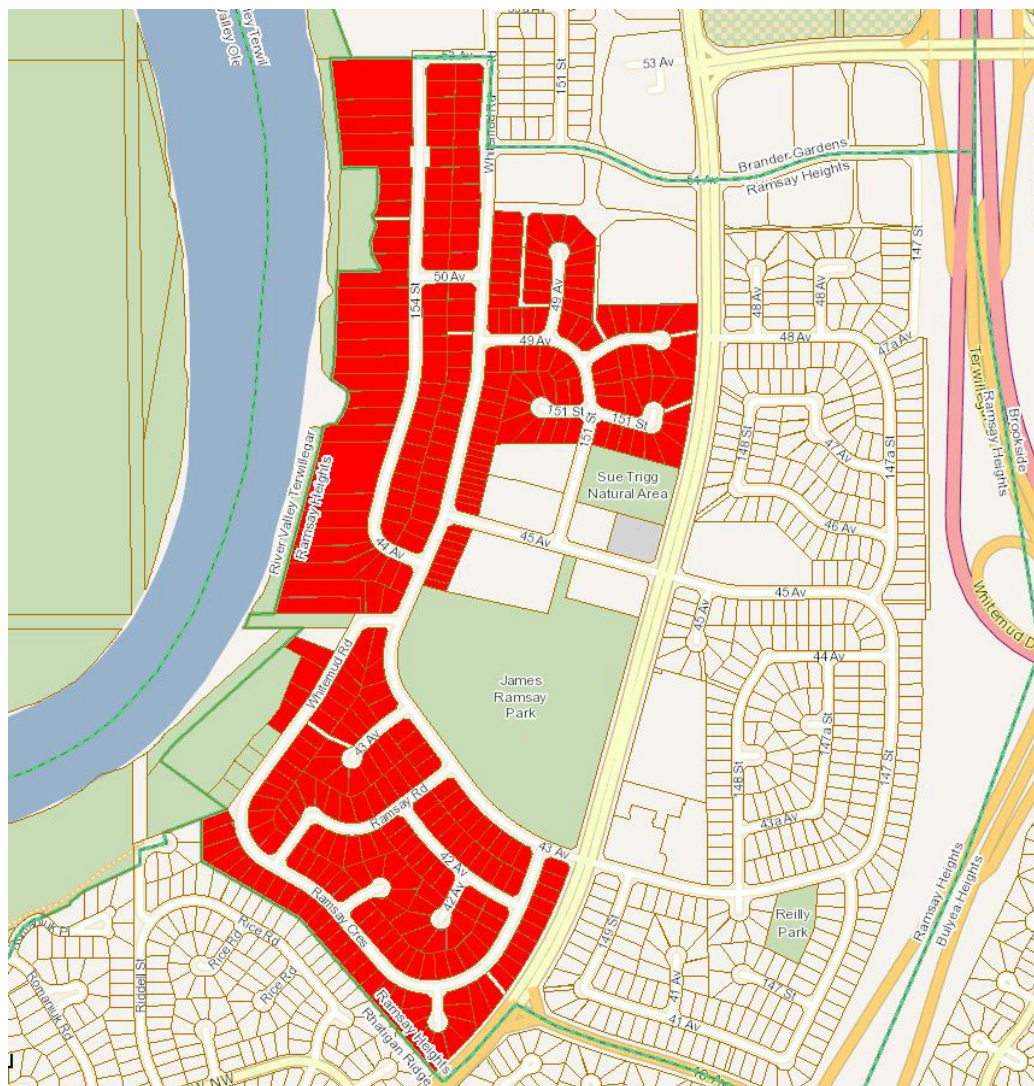
Study Area 3205: Windsor Park



 Windsor Park South (3205)

The information provided by this map is for reference purpose only. The City of Edmonton disclaims any liability for the use of this map. This map may not be published, broadcast, redrawn or redistributed in whole or in part without the express written permission of the City of Edmonton, Financial and Corporate Services Department. All rights reserved. Copyright © 2021 The City of Edmonton

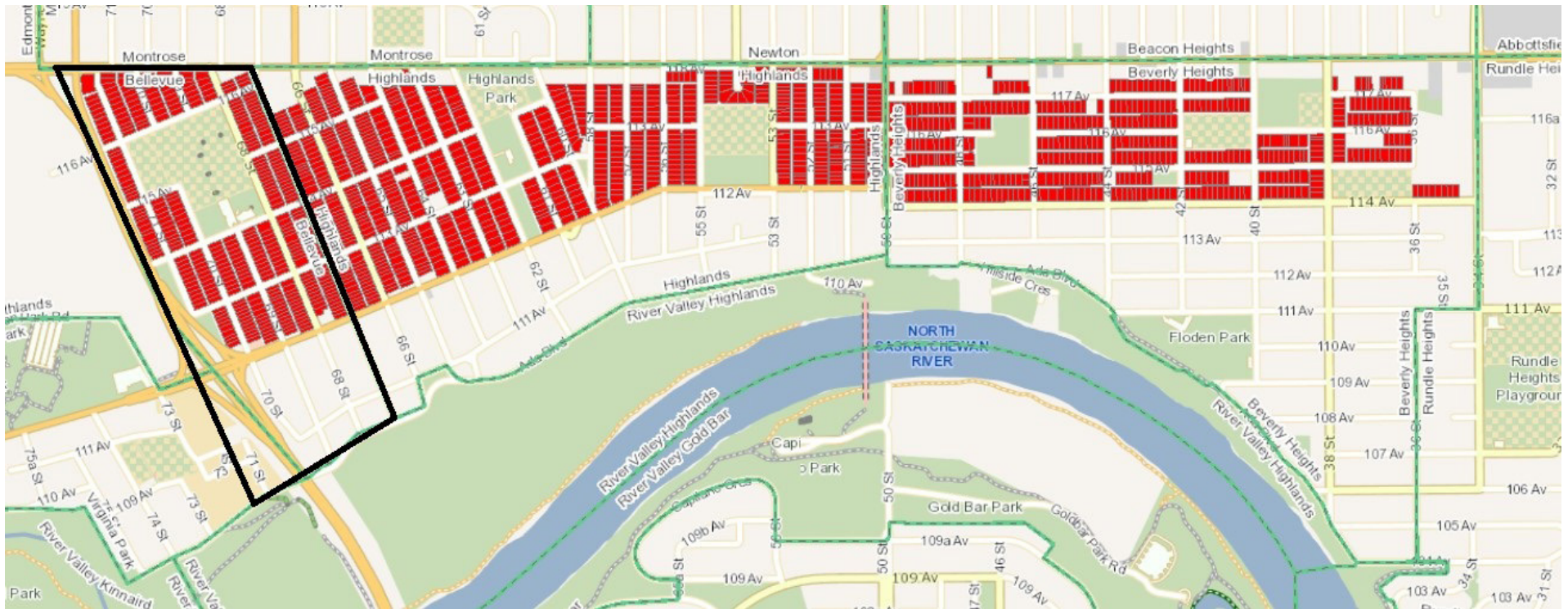
Study Area 3206: Ramsay Heights




 Ramsay Heights West (3206)

The information provided by this map is for reference purpose only. The City of Edmonton disclaims any liability for the use of this map. This map may not be published, broadcast, redrawn or redistributed in whole or in part without the express written permission of the City of Edmonton, Financial and Corporate Services Department. All rights reserved. Copyright © 2021 The City of Edmonton

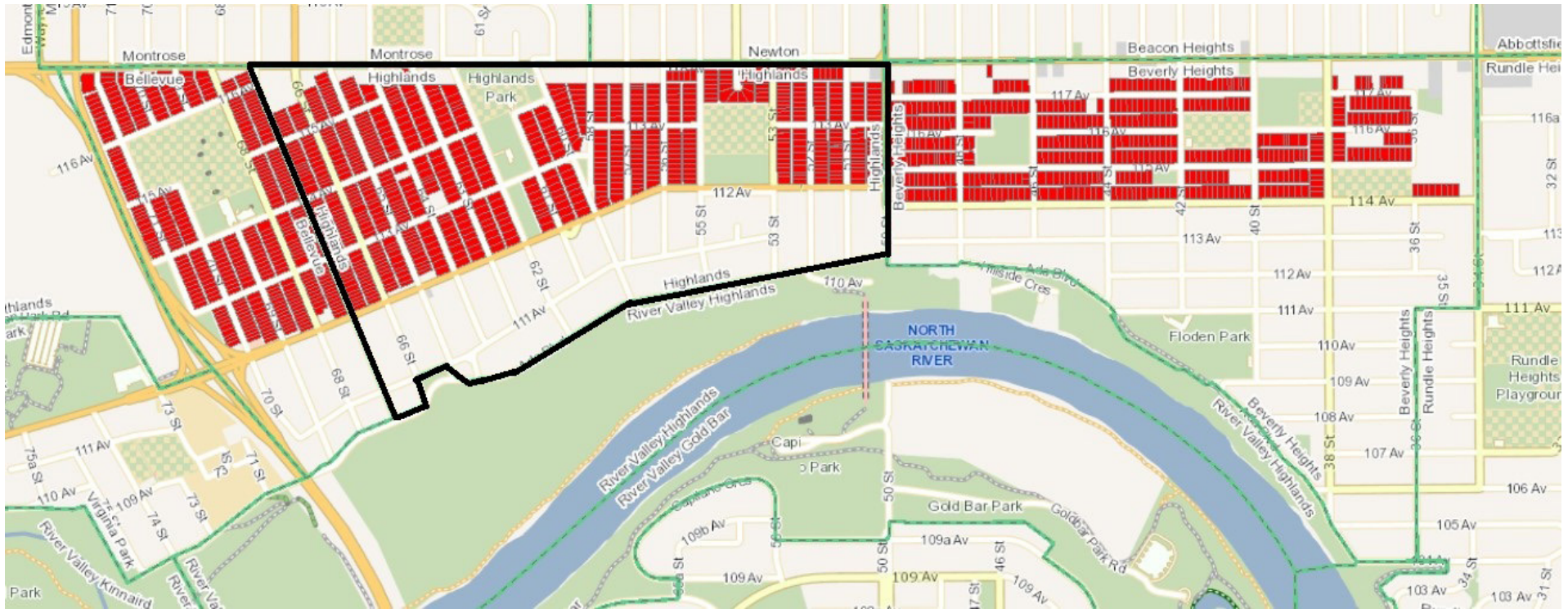
Study Area 3208: Bellevue, Highlands, Beverly Heights




 Bellevue - North of 112th Avenue (3208)

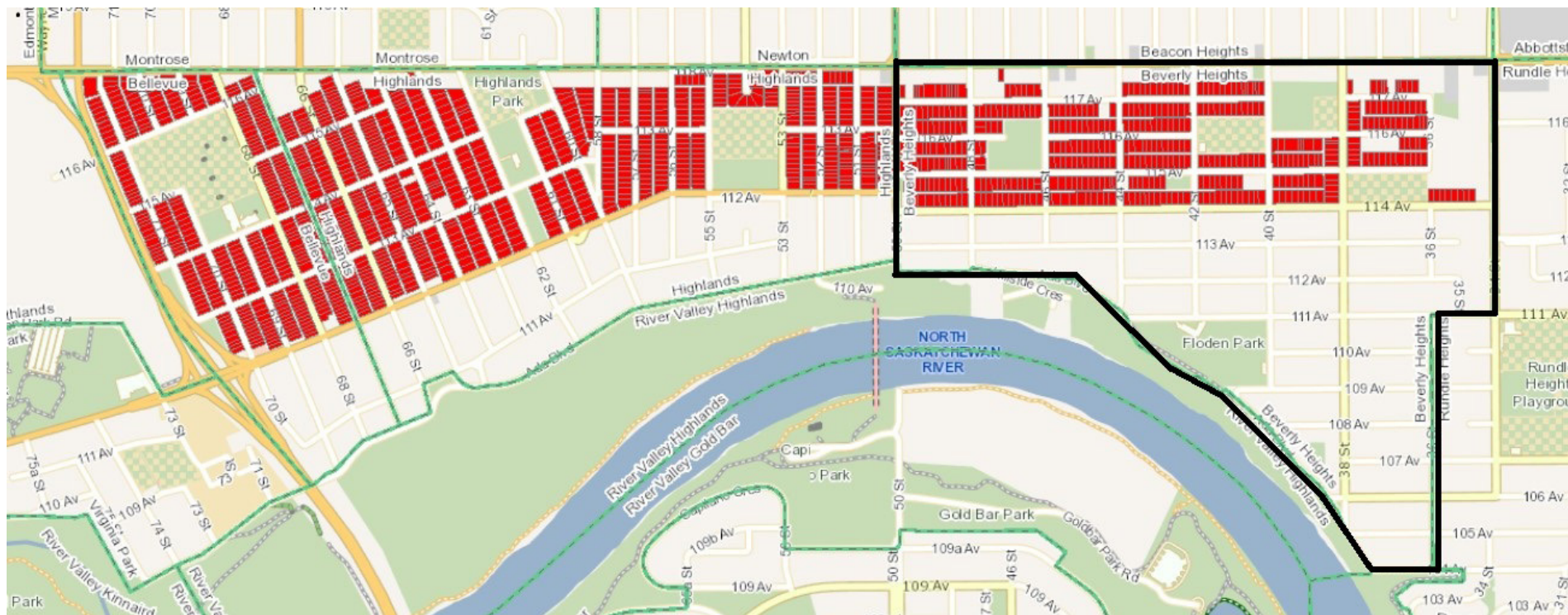
The information provided by this map is for reference purpose only. The City of Edmonton disclaims any liability for the use of this map. This map may not be published, broadcast, redrawn or redistributed in whole or in part without the express written permission of the City of Edmonton, Financial and Corporate Services Department. All rights reserved. Copyright © 2021 The City of Edmonton

Study Area 3208: Bellevue, Highlands, Beverly Heights



 Highlands - North of 112th Avenue (3208)

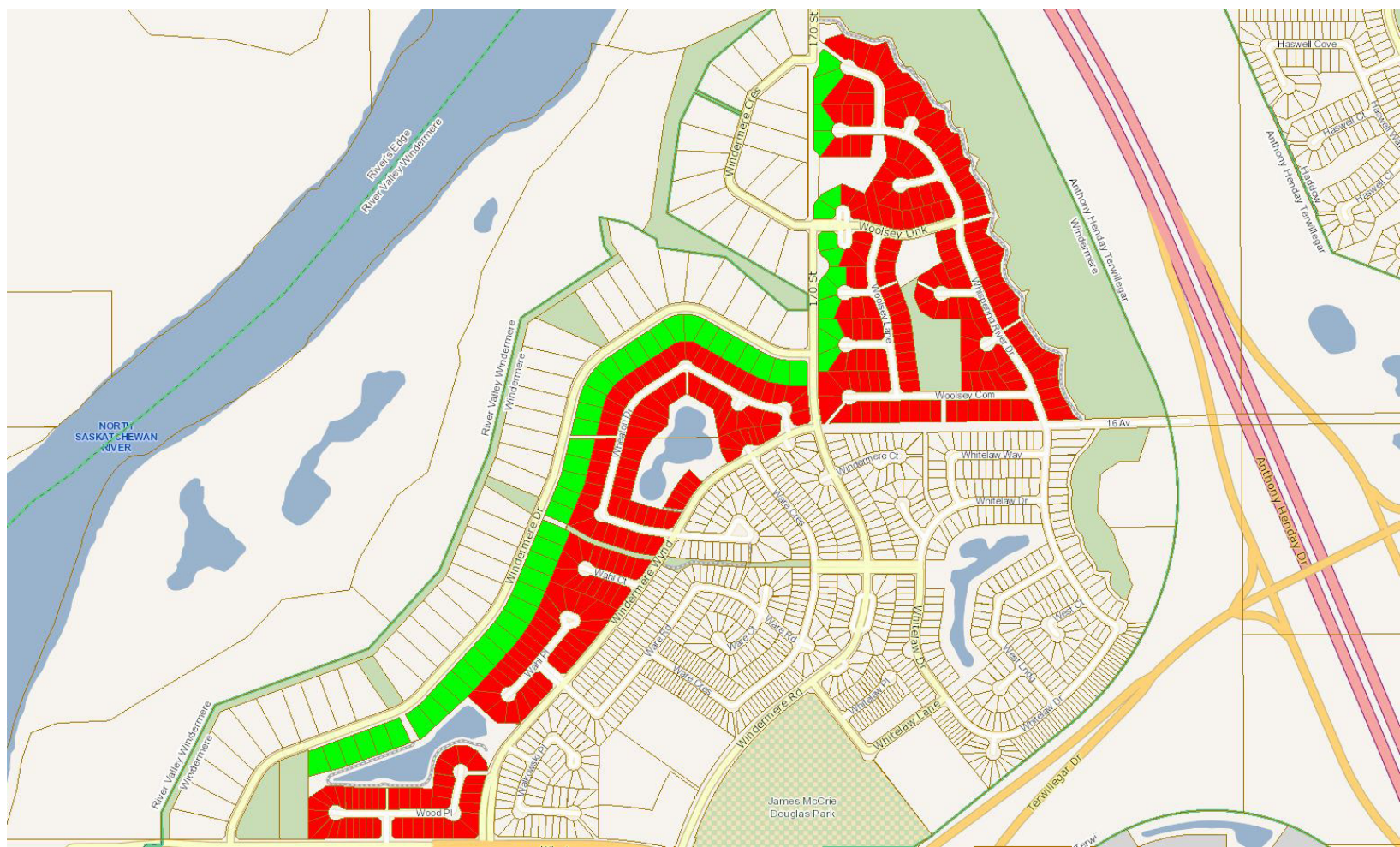
Study Area 3208: Bellevue, Highlands, Beverly Heights



 Beverly Heights - North of 112th Avenue (3208)

The information provided by this map is for reference purpose only. The City of Edmonton disclaims any liability for the use of this map. This map may not be published, broadcast, redrawn or redistributed in whole or in part without the express written permission of the City of Edmonton, Financial and Corporate Services Department. All rights reserved. Copyright © 2021 The City of Edmonton

Study Area 3209/3220: Windermere

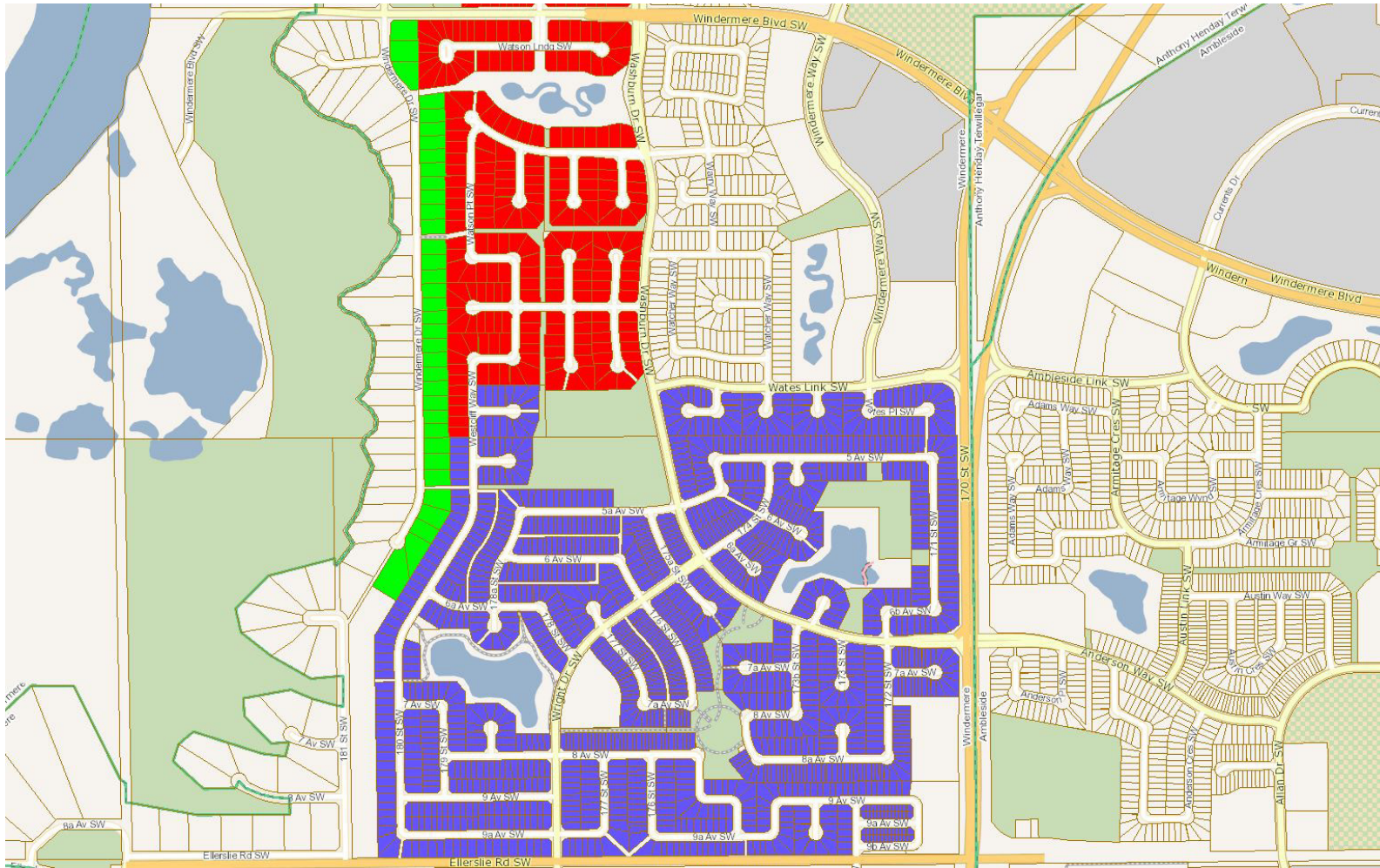


 Upper Windermere (3209)

 Windermere DC1 Large Lots (3220)

The information provided by this map is for reference purpose only. The City of Edmonton disclaims any liability for the use of this map. This map may not be published, broadcast, redrawn or redistributed in whole or in part without the express written permission of the City of Edmonton, Financial and Corporate Services Department. All rights reserved. Copyright © 2021 The City of Edmonton

Study Area 3209/3220/3221: Windermere





- Upper Windermere (3209)
- Windermere DC1 Large Lots (3220)
- Windermere South (3221)

The information provided by this map is for reference purpose only. The City of Edmonton disclaims any liability for the use of this map. This map may not be published, broadcast, redrawn or redistributed in whole or in part without the express written permission of the City of Edmonton, Financial and Corporate Services Department. All rights reserved. Copyright © 2021 The City of Edmonton

Study Area 3221/3222: Windermere

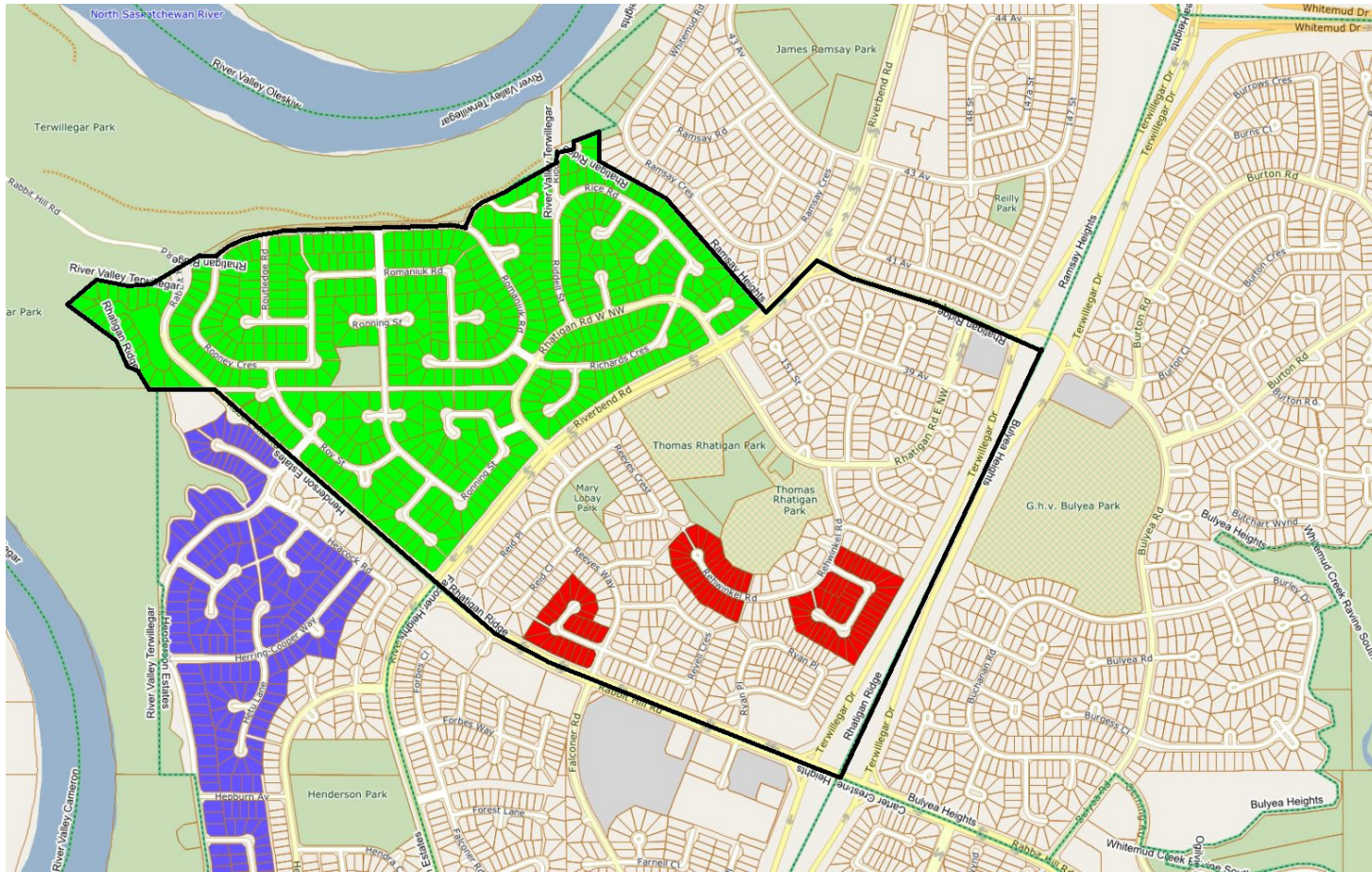


 Windermere South (3221)

 Windermere South of Ellerslie (3222)

The information provided by this map is for reference purpose only. The City of Edmonton disclaims any liability for the use of this map. This map may not be published, broadcast, redrawn or redistributed in whole or in part without the express written permission of the City of Edmonton, Financial and Corporate Services Department. All rights reserved. Copyright © 2021 The City of Edmonton

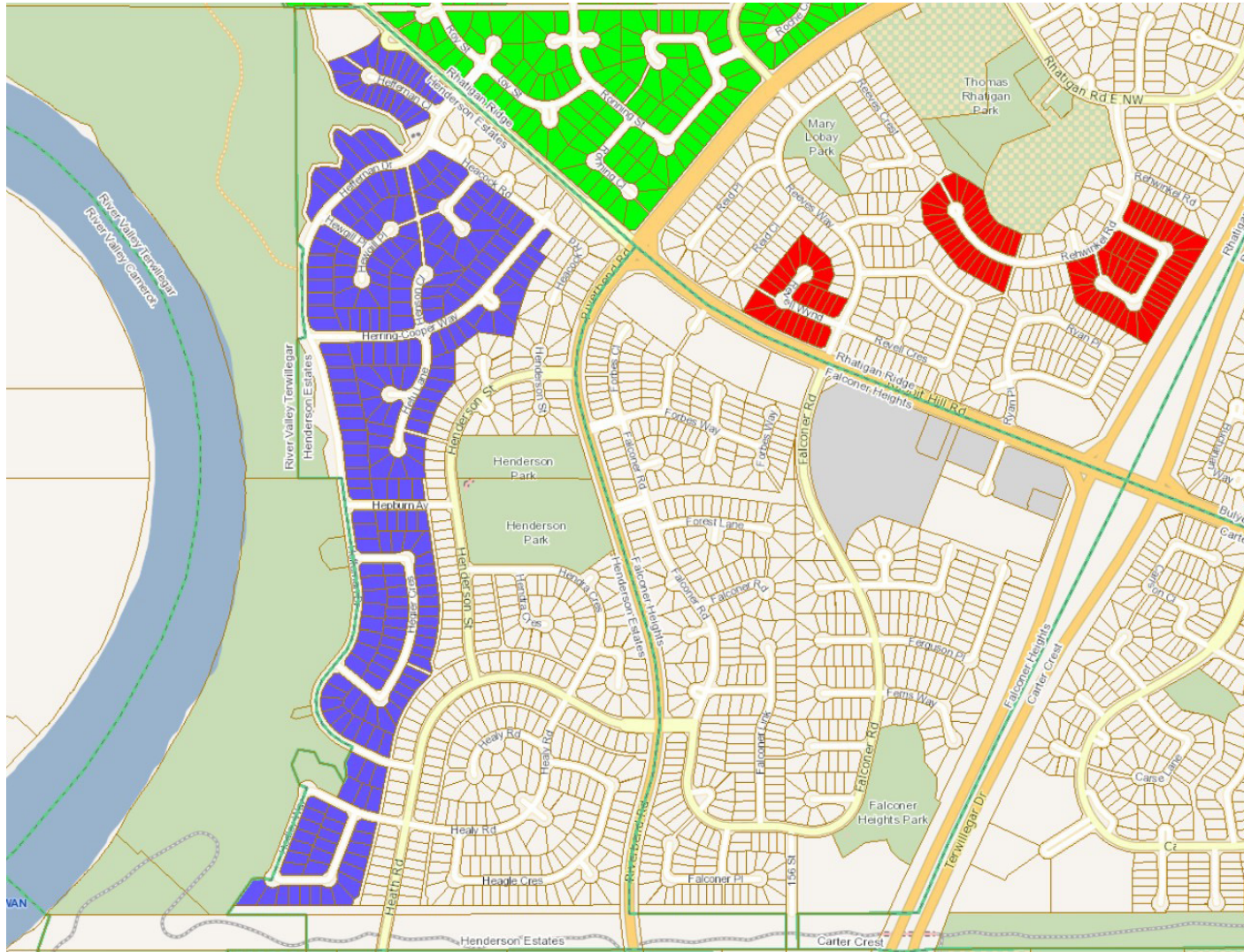
Study Area 3225/3226: Rhatigan Ridge, Henderson Estates






- Rhatigan Adult Complexes (3212)
- Rhatigan West (3225)
- Henderson West (3226)
See Following Page

The information provided by this map is for reference purpose only. The City of Edmonton disclaims any liability for the use of this map. This map may not be published, broadcast, redrawn or redistributed in whole or in part without the express written permission of the City of Edmonton, Financial and Corporate Services Department. All rights reserved. Copyright © 2021 The City of Edmonton

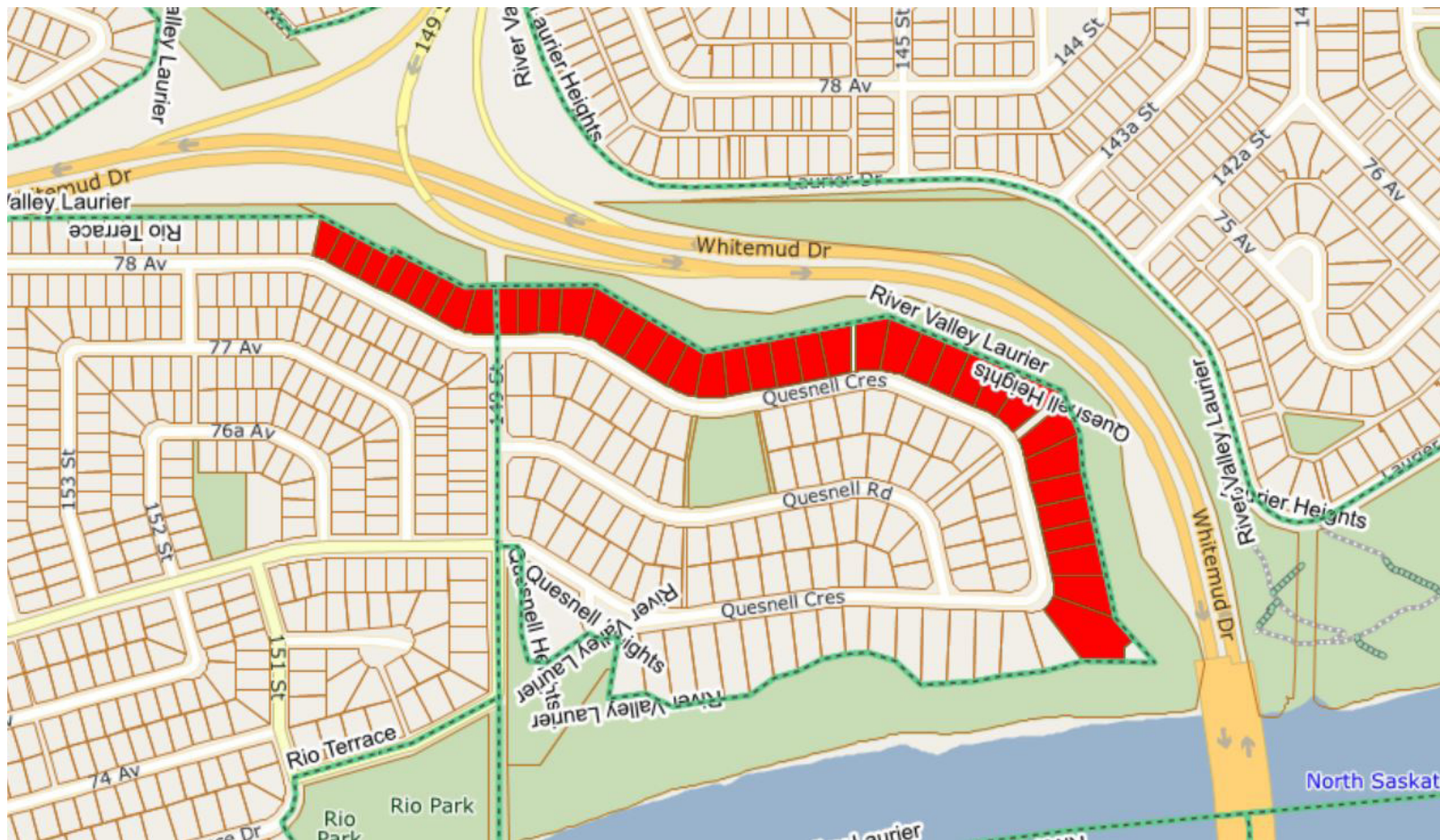
Study Area 3225/3226: Rhatigan Ridge, Henderson Estates




-  Rhatigan Adult Complexes (3212)
(see previous page)
-  Rhatigan West (3225)
(see previous page)
-  Henderson West (3226)

The information provided by this map is for reference purpose only. The City of Edmonton disclaims any liability for the use of this map. This map may not be published, broadcast, redrawn or redistributed in whole or in part without the express written permission of the City of Edmonton, Financial and Corporate Services Department. All rights reserved. Copyright © 2021 The City of Edmonton

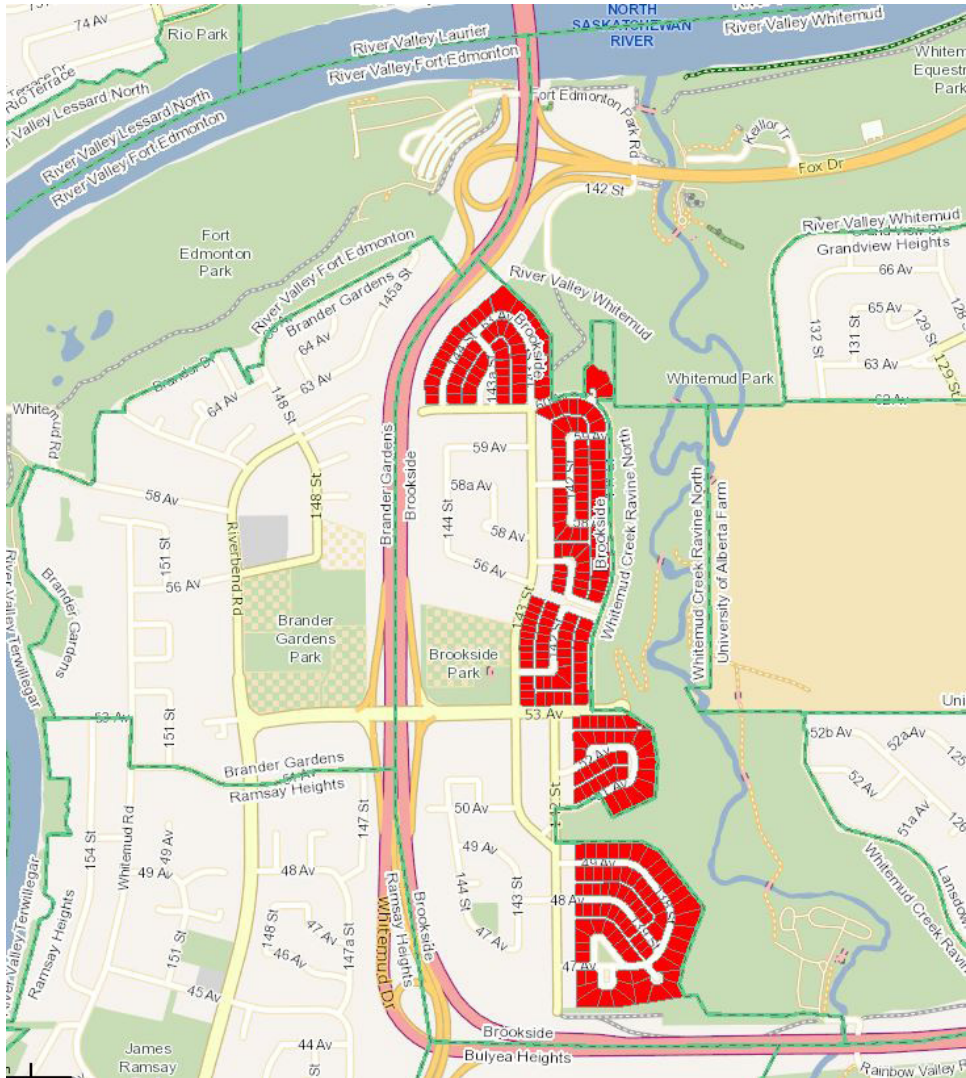
Study Area 3217: Rio Terrace and Quesnell Heights



 Rio Terrace and Quesnell Heights (3217)

The information provided by this map is for reference purpose only. The City of Edmonton disclaims any liability for the use of this map. This map may not be published, broadcast, redrawn or redistributed in whole or in part without the express written permission of the City of Edmonton, Financial and Corporate Services Department. All rights reserved. Copyright © 2021 The City of Edmonton

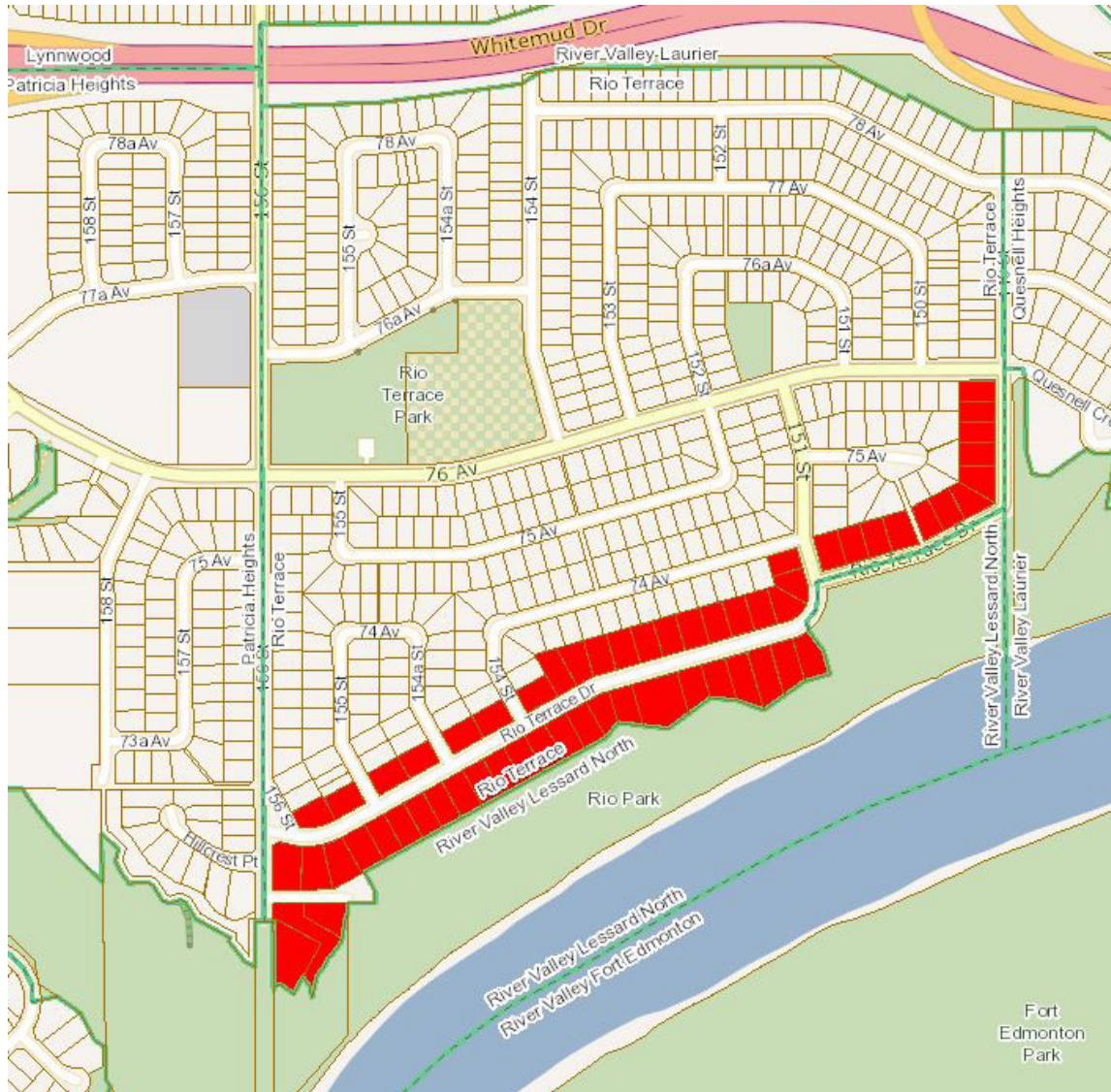
Study Area 3224: Brookside




 Brookside East (3224)

The information provided by this map is for reference purpose only. The City of Edmonton disclaims any liability for the use of this map. This map may not be published, broadcast, redrawn or redistributed in whole or in part without the express written permission of the City of Edmonton, Financial and Corporate Services Department. All rights reserved. Copyright © 2021 The City of Edmonton

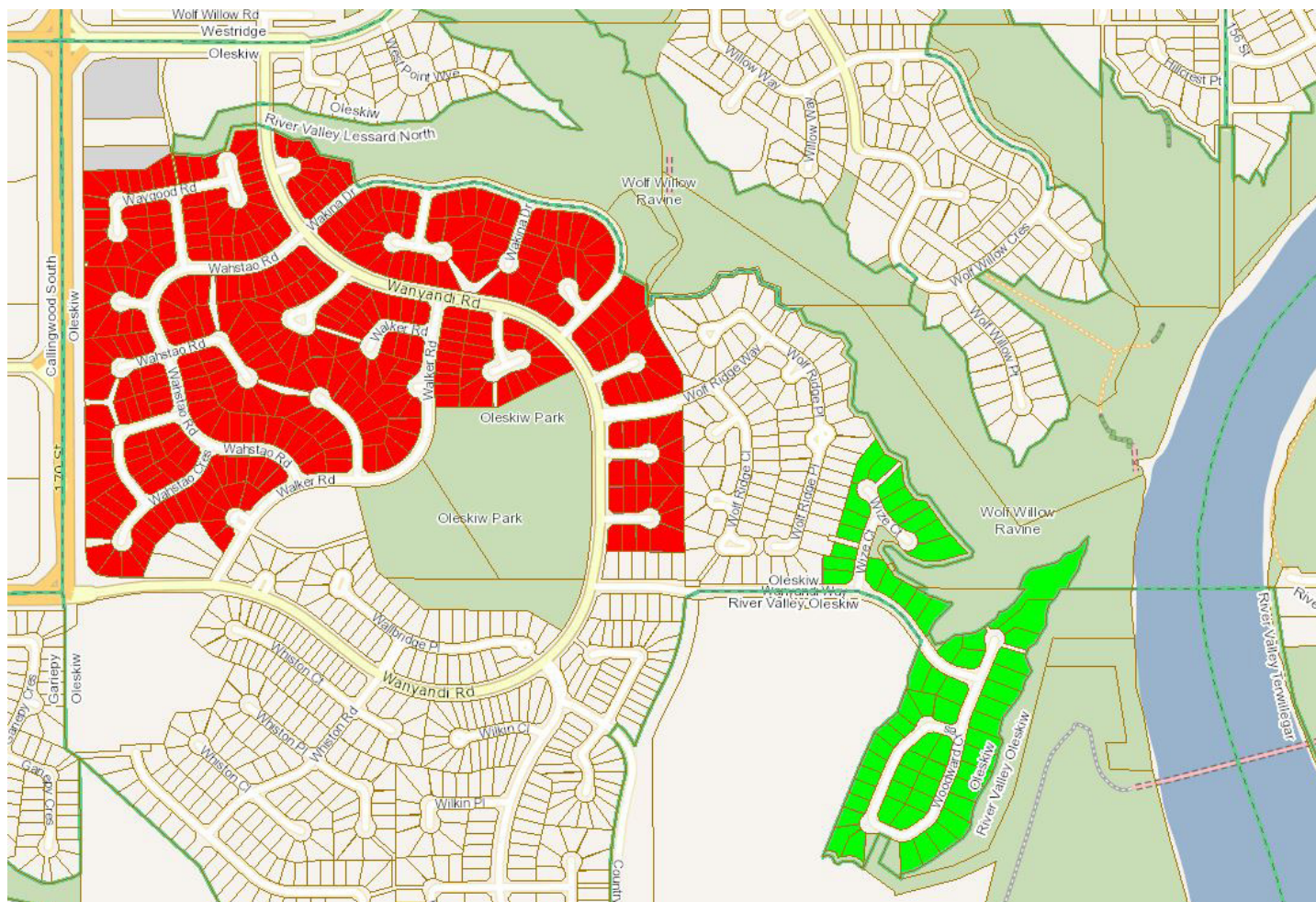
Study Area 3227: Rio Terrace





 Rio Terrace South (3227)

The information provided by this map is for reference purpose only. The City of Edmonton disclaims any liability for the use of this map. This map may not be published, broadcast, redrawn or redistributed in whole or in part without the express written permission of the City of Edmonton, Financial and Corporate Services Department. All rights reserved. Copyright © 2021 The City of Edmonton

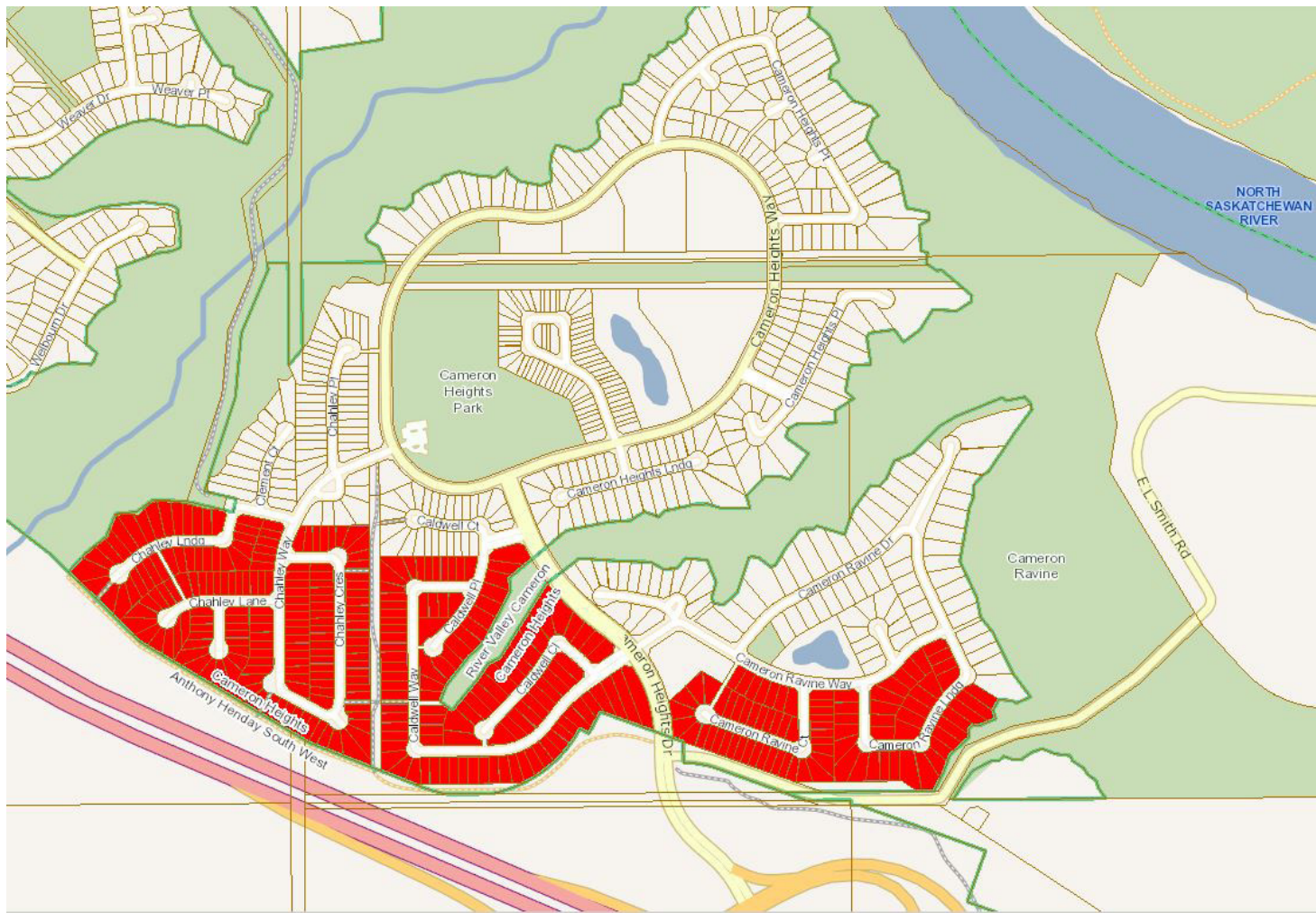
Study Area 3228/3229: Oleskiw



-  Oleskiw Phase 1 (3228)
-  Oleskiw Phase 3 (3229)

The information provided by this map is for reference purpose only. The City of Edmonton disclaims any liability for the use of this map. This map may not be published, broadcast, redrawn or redistributed in whole or in part without the express written permission of the City of Edmonton, Financial and Corporate Services Department. All rights reserved. Copyright © 2021 The City of Edmonton

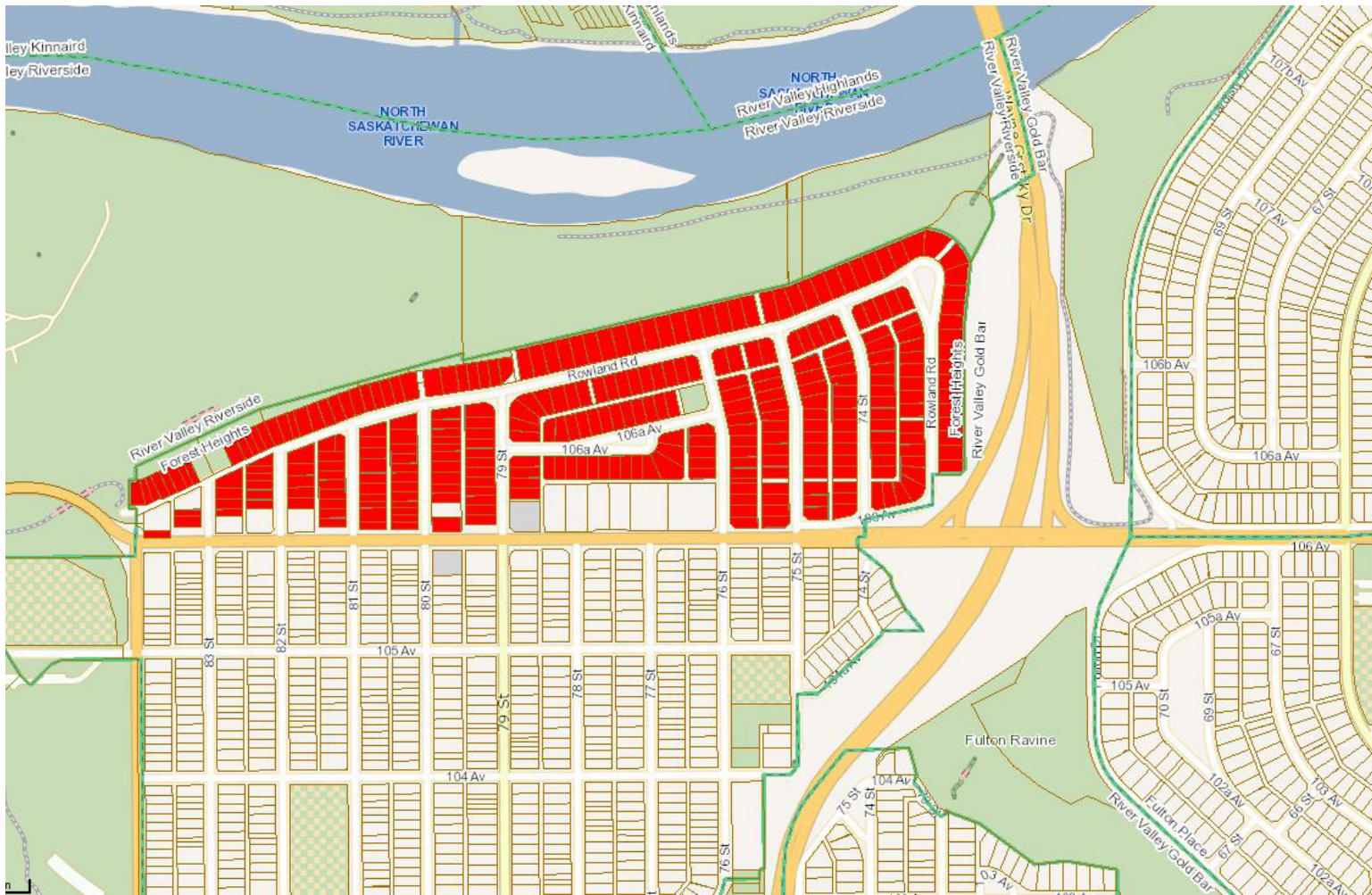
Study Area 3230: Cameron Heights



 Cameron Heights South (3230)

The information provided by this map is for reference purpose only. The City of Edmonton disclaims any liability for the use of this map. This map may not be published, broadcast, redrawn or redistributed in whole or in part without the express written permission of the City of Edmonton, Financial and Corporate Services Department. All rights reserved. Copyright © 2021 The City of Edmonton

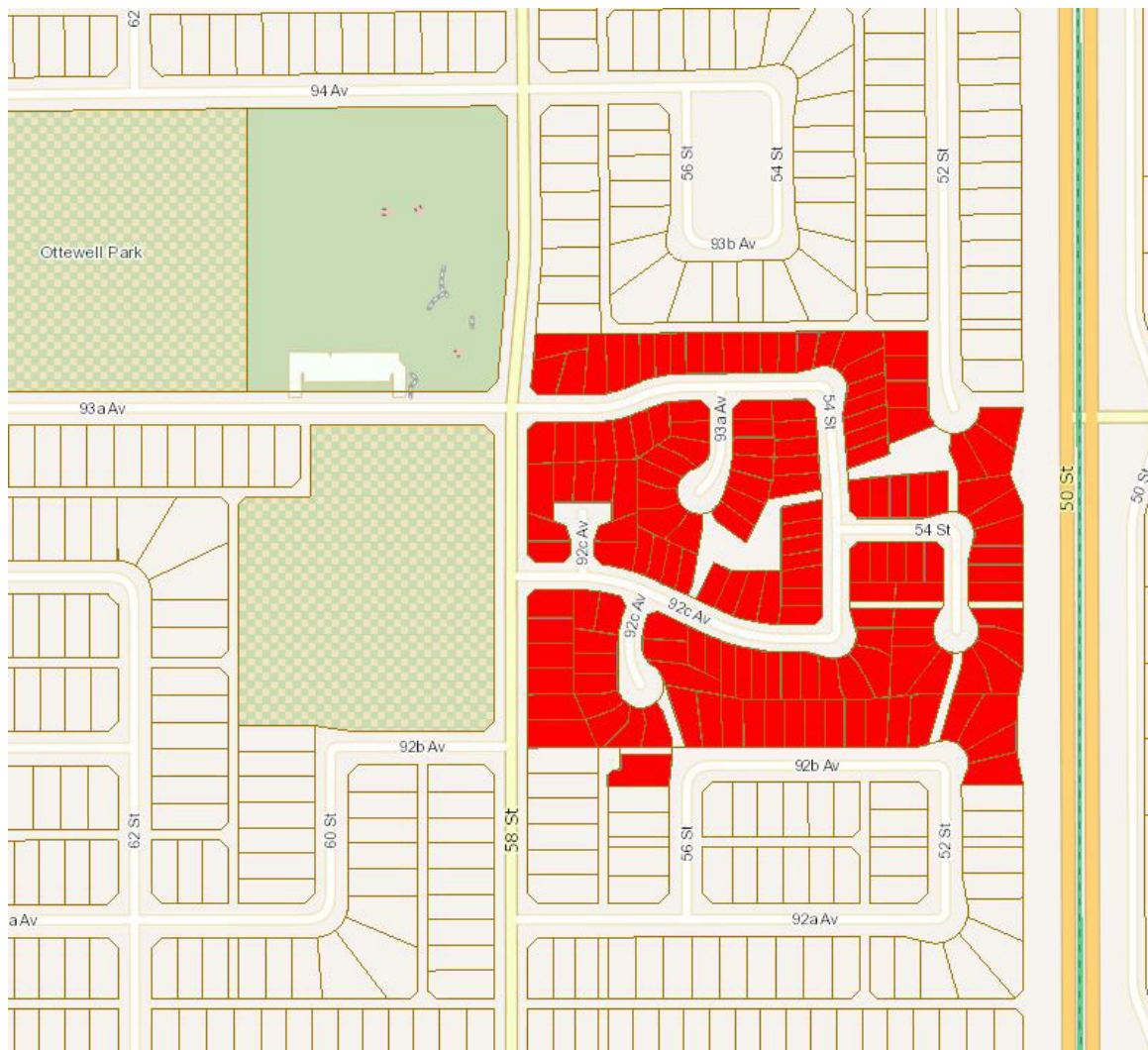
Study Area 3231: Forest Heights



 Forest Heights North (3231)

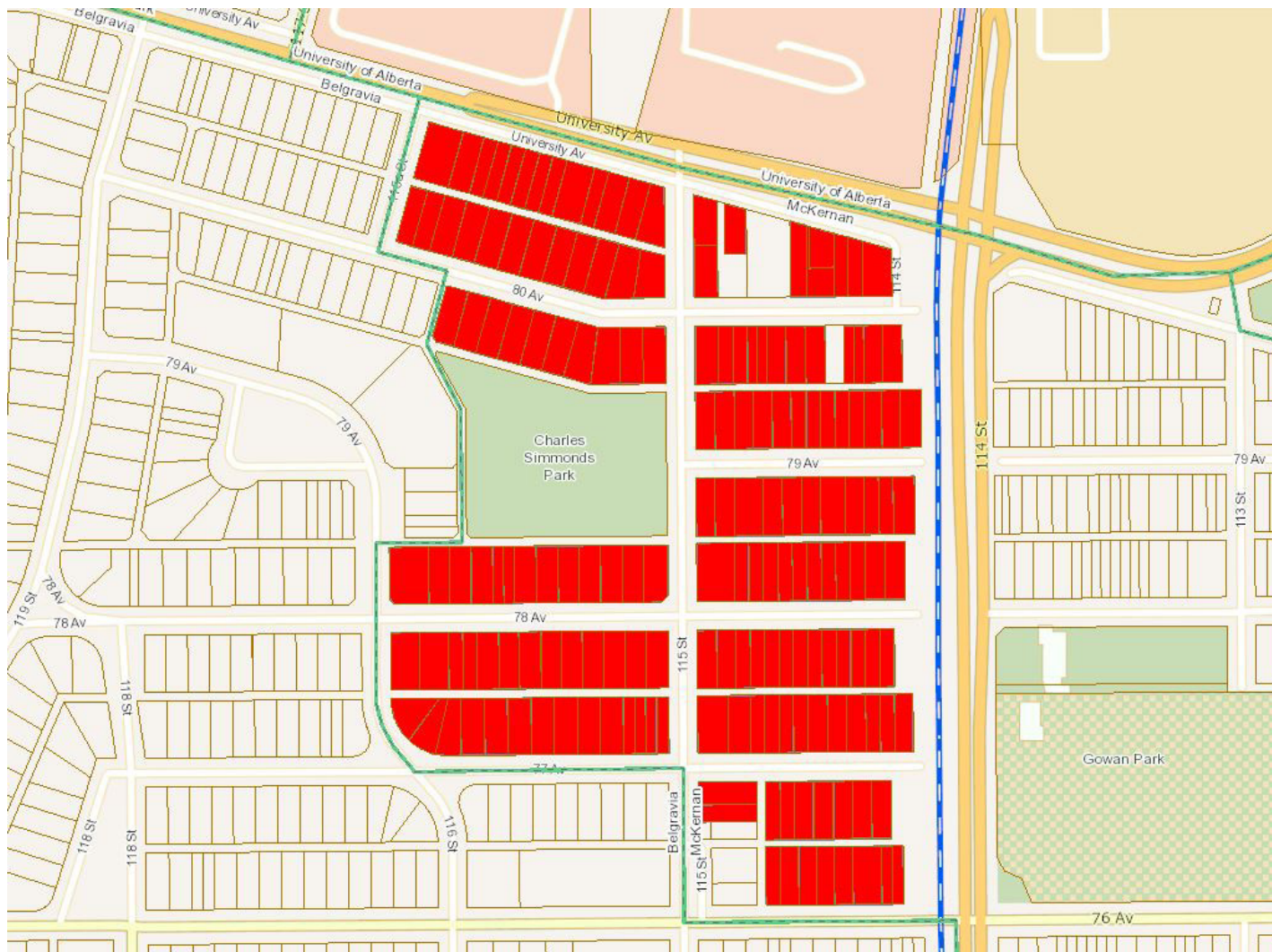
The information provided by this map is for reference purpose only. The City of Edmonton disclaims any liability for the use of this map. This map may not be published, broadcast, redrawn or redistributed in whole or in part without the express written permission of the City of Edmonton, Financial and Corporate Services Department. All rights reserved. Copyright © 2021 The City of Edmonton


Study Area 3232: Ottewell



 Ottewell RPL (3232)

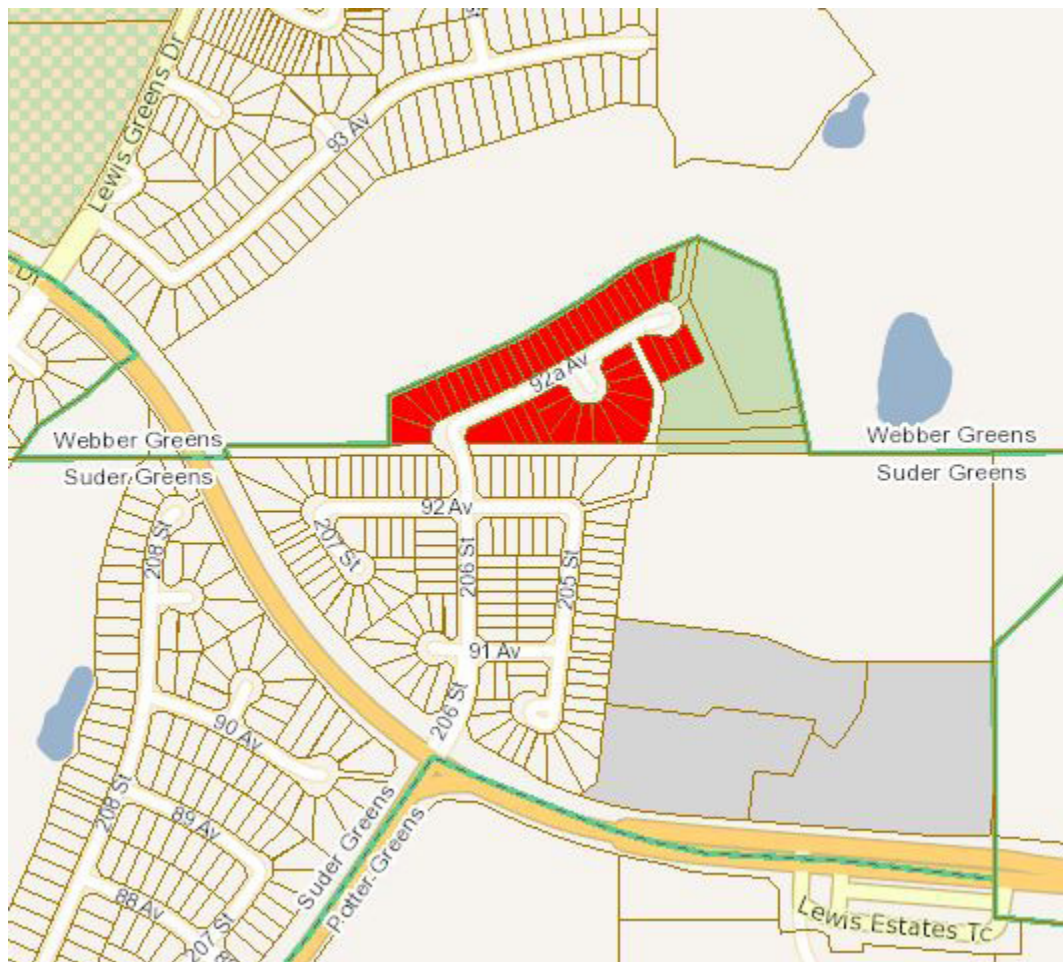
Study Area 3233: McKernan



 McKernan West (3233)

The information provided by this map is for reference purpose only. The City of Edmonton disclaims any liability for the use of this map. This map may not be published, broadcast, redrawn or redistributed in whole or in part without the express written permission of the City of Edmonton, Financial and Corporate Services Department. All rights reserved. Copyright © 2021 The City of Edmonton

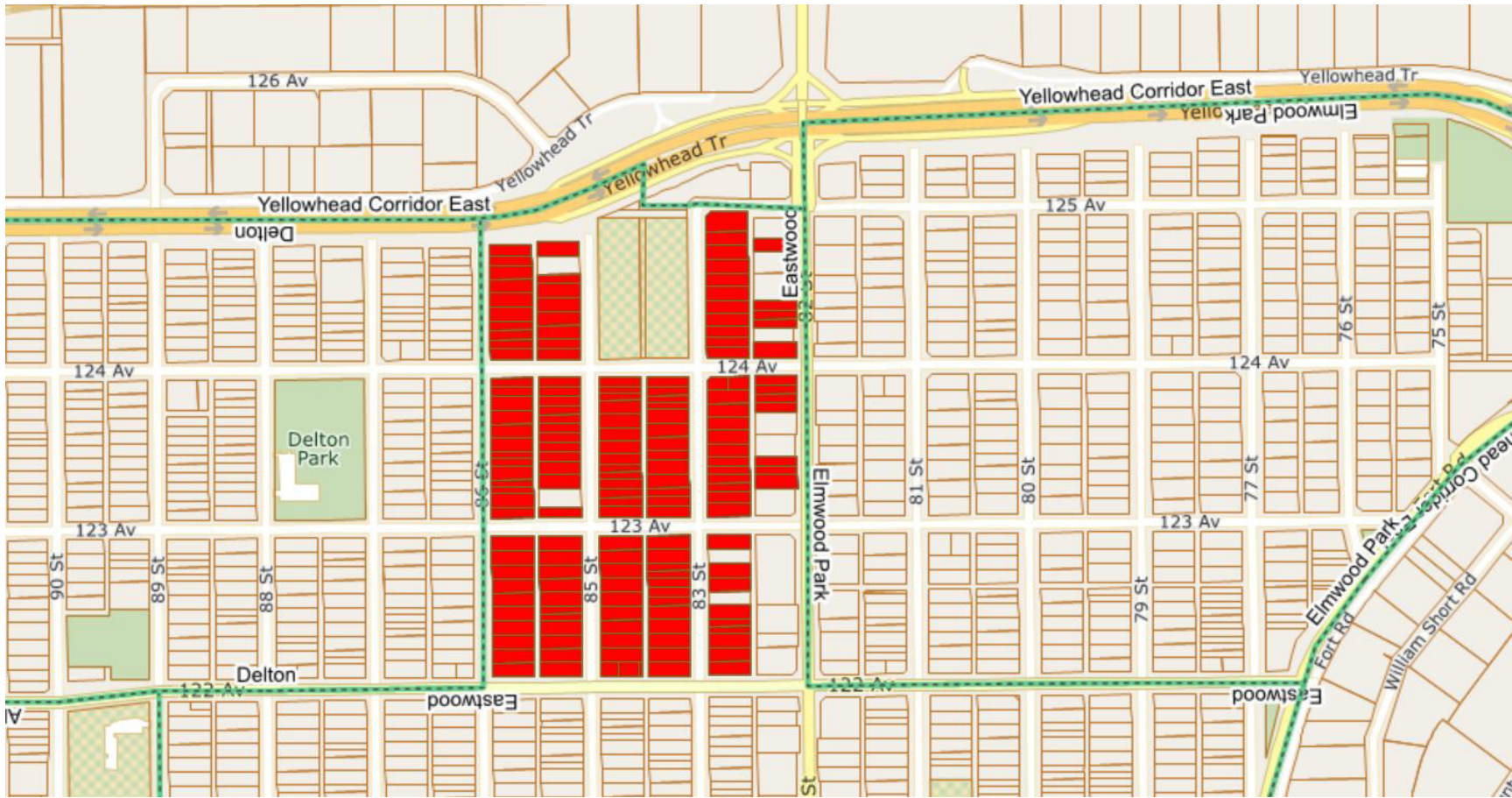
Study Area 3234: Suder Greens




 Suder Greens North (3234)

The information provided by this map is for reference purpose only. The City of Edmonton disclaims any liability for the use of this map. This map may not be published, broadcast, redrawn or redistributed in whole or in part without the express written permission of the City of Edmonton, Financial and Corporate Services Department. All rights reserved. Copyright © 2021 The City of Edmonton

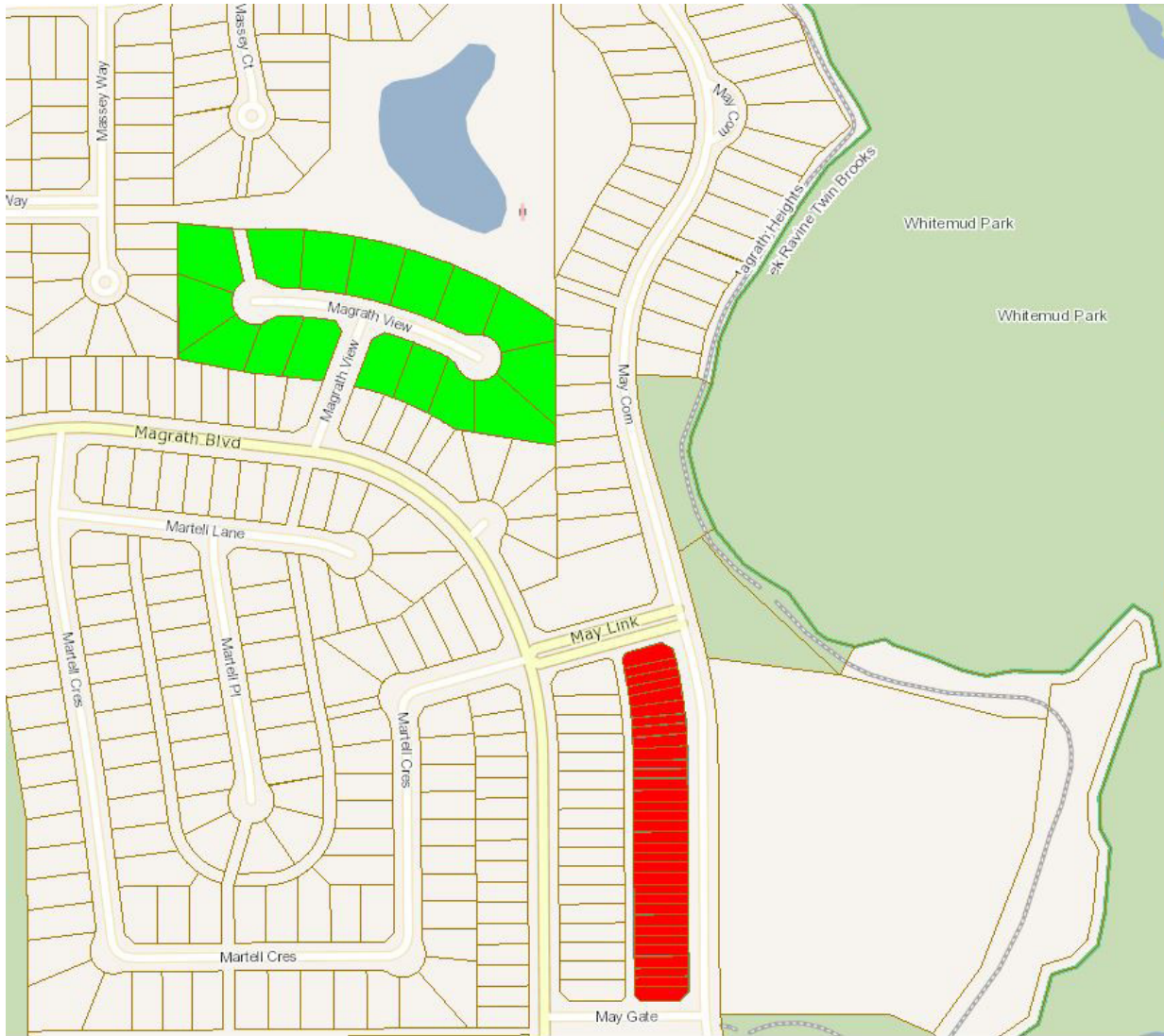
Study Area 3235: Eastwood





 Eastwood North (3235)

The information provided by this map is for reference purpose only. The City of Edmonton disclaims any liability for the use of this map. This map may not be published, broadcast, redrawn or redistributed in whole or in part without the express written permission of the City of Edmonton, Financial and Corporate Services Department. All rights reserved. Copyright © 2021 The City of Edmonton

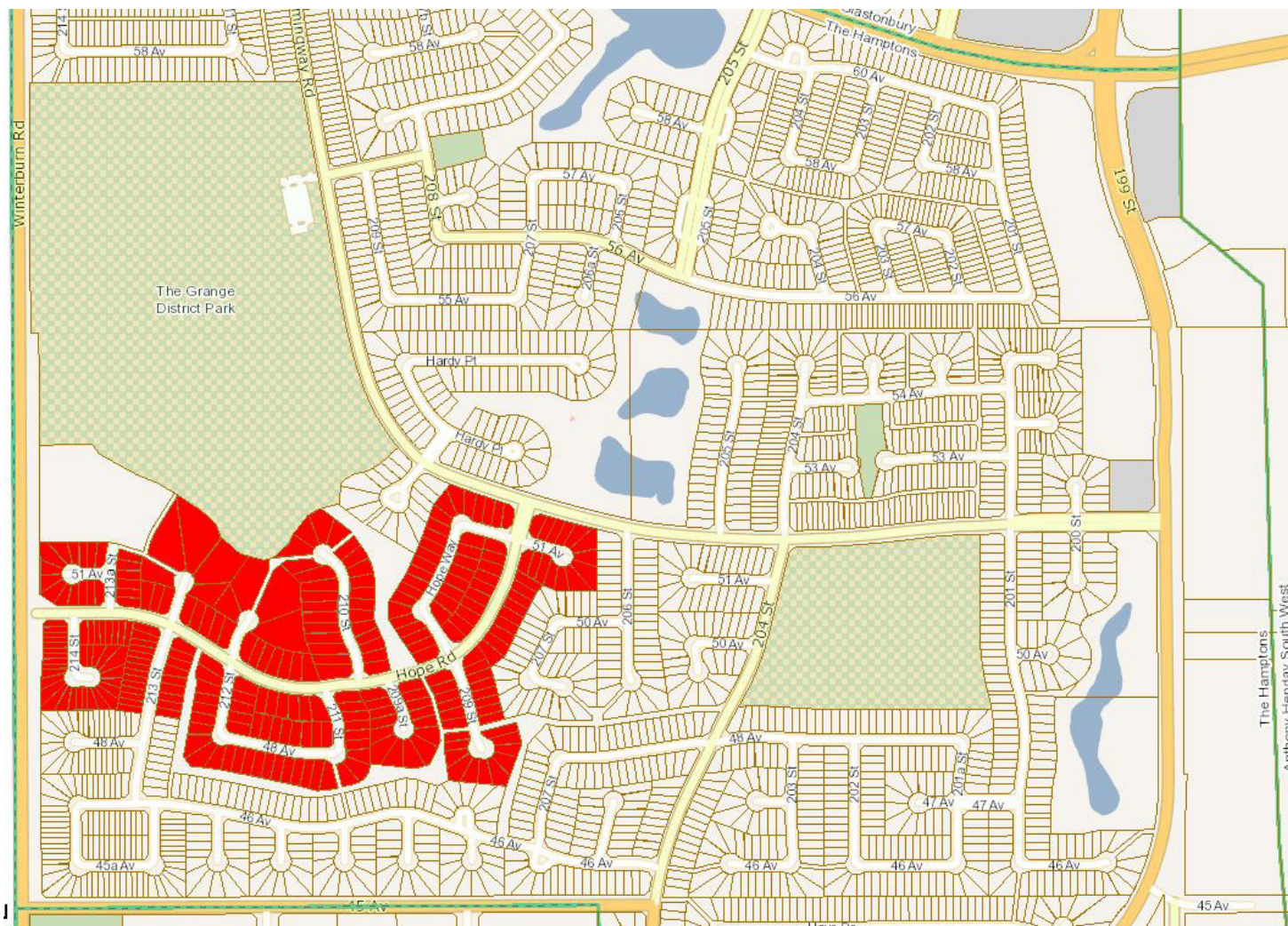
Study Area 3236/4001: Magrath Heights



-  May Common Rowhouses (3236)
-  Magrath View (4001)

The information provided by this map is for reference purpose only. The City of Edmonton disclaims any liability for the use of this map. This map may not be published, broadcast, redrawn or redistributed in whole or in part without the express written permission of the City of Edmonton, Financial and Corporate Services Department. All rights reserved. Copyright © 2021 The City of Edmonton

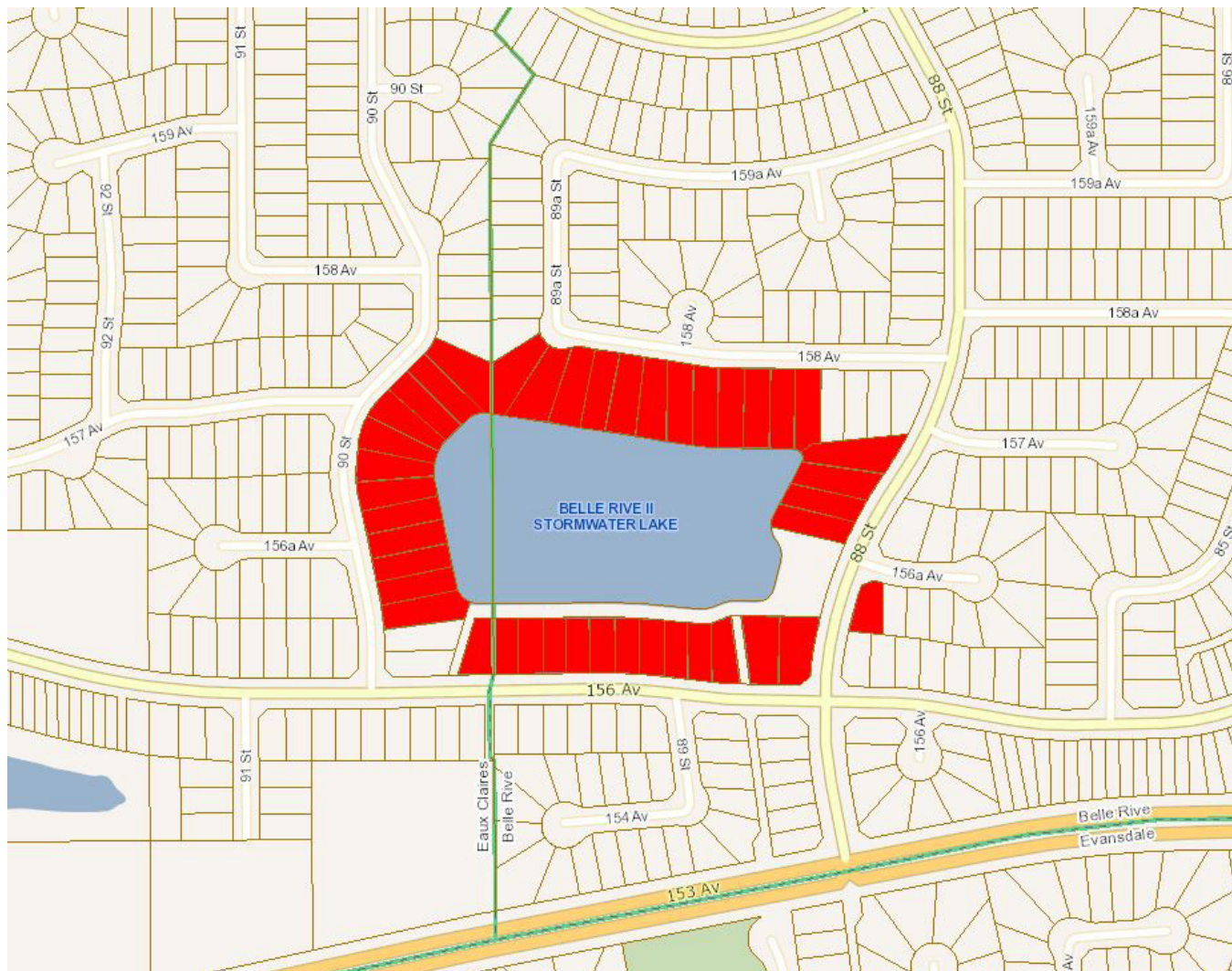
Study Area 3237: The Hamptons



 Copperwood HOA (3237)

The information provided by this map is for reference purpose only. The City of Edmonton disclaims any liability for the use of this map. This map may not be published, broadcast, redrawn or redistributed in whole or in part without the express written permission of the City of Edmonton, Financial and Corporate Services Department. All rights reserved. Copyright © 2021 The City of Edmonton

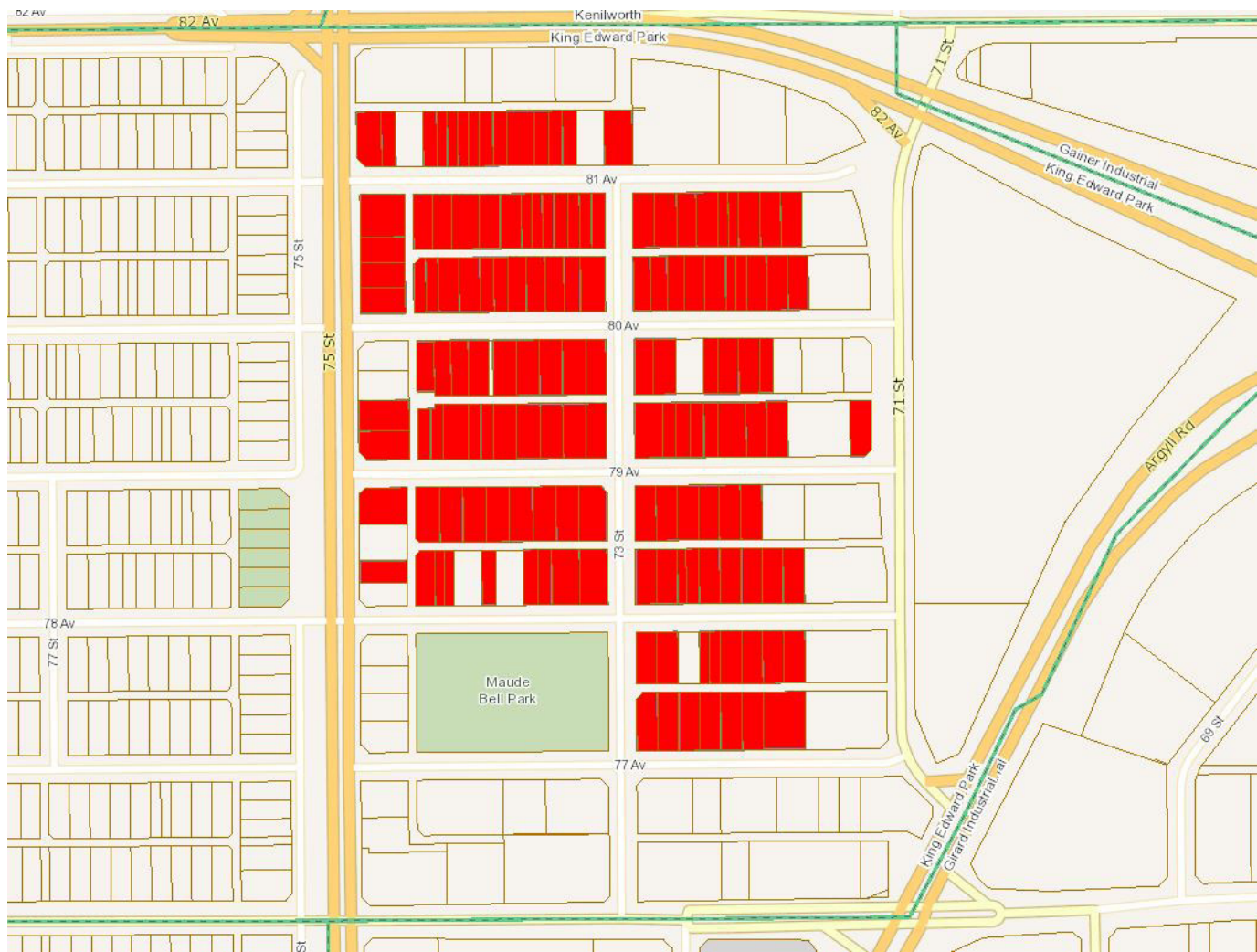
Study Area 3238: Belle Rive, Eaux Claires




 Belle Rive Lake South (3238)

The information provided by this map is for reference purpose only. The City of Edmonton disclaims any liability for the use of this map. This map may not be published, broadcast, redrawn or redistributed in whole or in part without the express written permission of the City of Edmonton, Financial and Corporate Services Department. All rights reserved. Copyright © 2021 The City of Edmonton

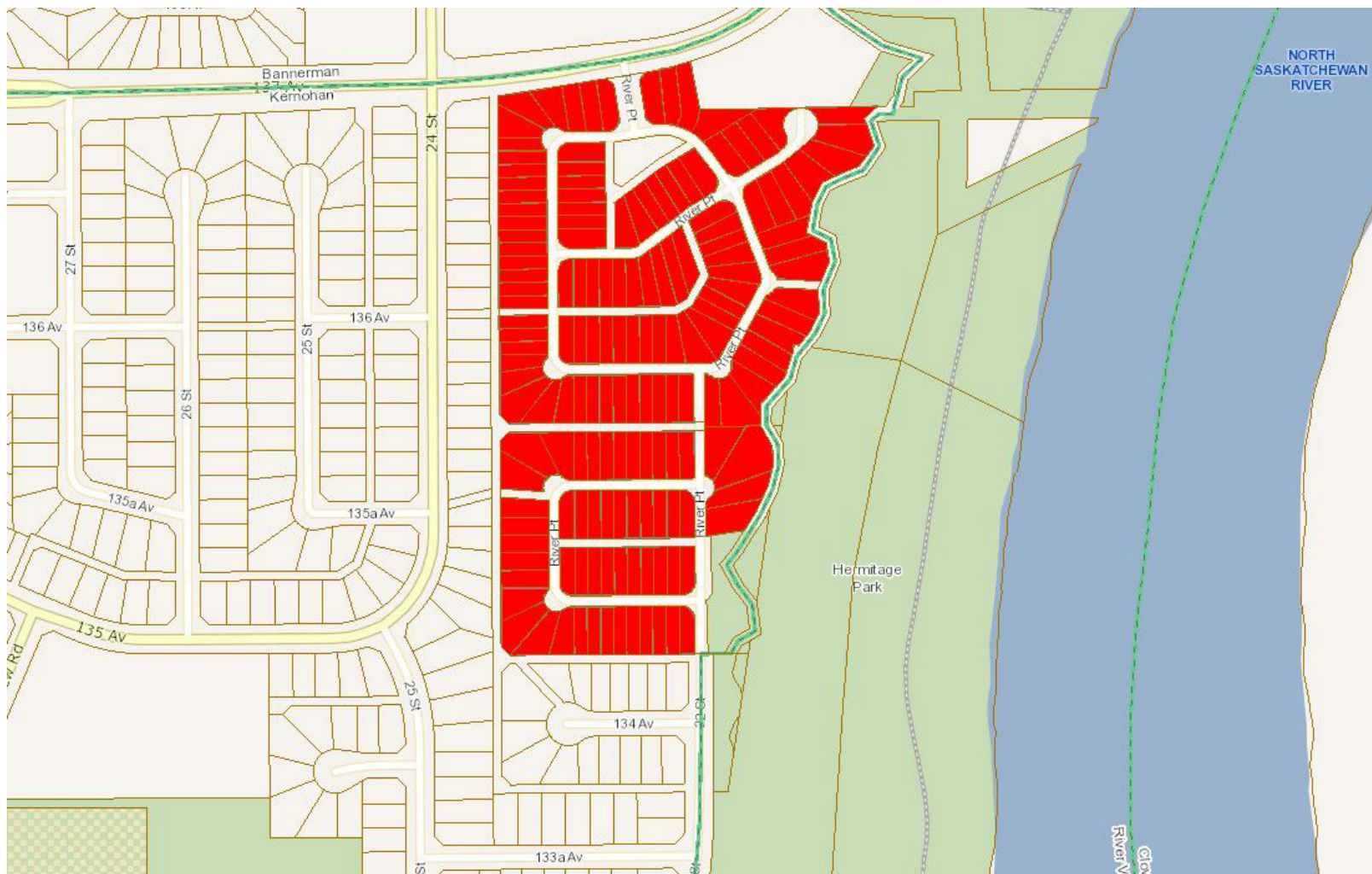
Study Area 3239: King Edward Park



 King Edward Park East (3239)

The information provided by this map is for reference purpose only. The City of Edmonton disclaims any liability for the use of this map. This map may not be published, broadcast, redrawn or redistributed in whole or in part without the express written permission of the City of Edmonton, Financial and Corporate Services Department. All rights reserved. Copyright © 2021 The City of Edmonton

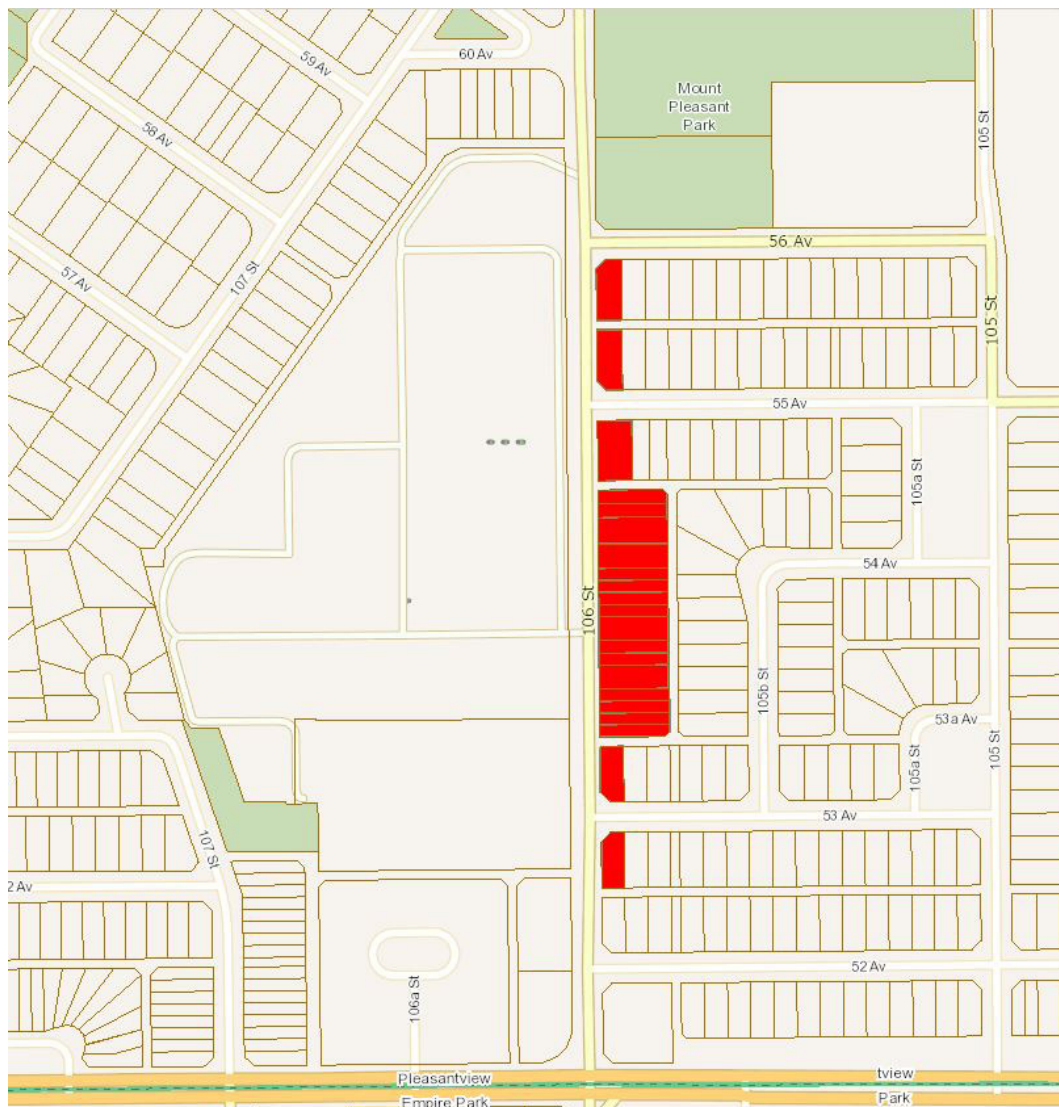
Study Area 3242: Kernohan



 Riverpoint HOA (3242)

The information provided by this map is for reference purpose only. The City of Edmonton disclaims any liability for the use of this map. This map may not be published, broadcast, redrawn or redistributed in whole or in part without the express written permission of the City of Edmonton, Financial and Corporate Services Department. All rights reserved. Copyright © 2021 The City of Edmonton

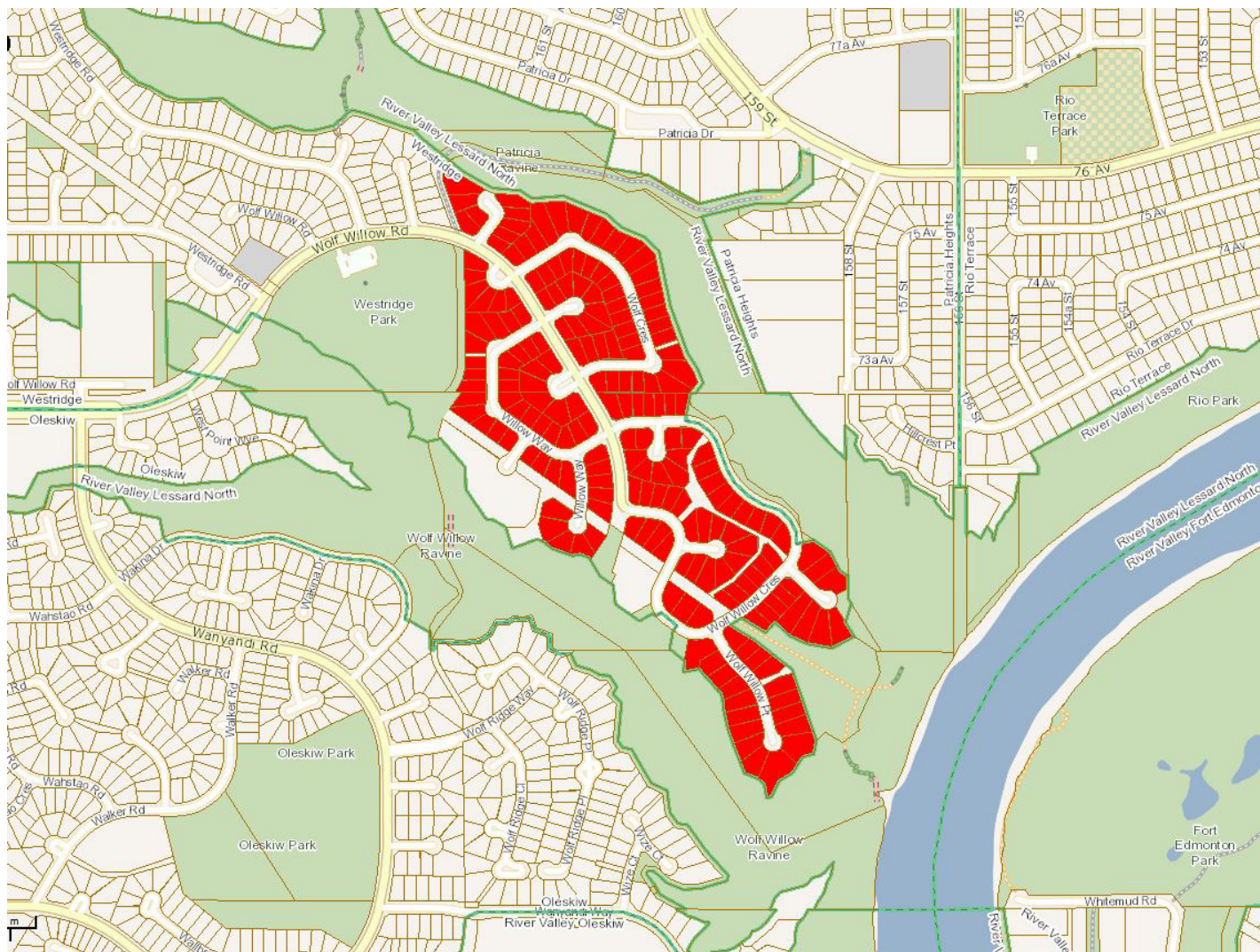
Study Area 3243: Pleasantview



 Pleasantview Cemetery East (3243)

The information provided by this map is for reference purpose only. The City of Edmonton disclaims any liability for the use of this map. This map may not be published, broadcast, redrawn or redistributed in whole or in part without the express written permission of the City of Edmonton, Financial and Corporate Services Department. All rights reserved. Copyright © 2021 The City of Edmonton

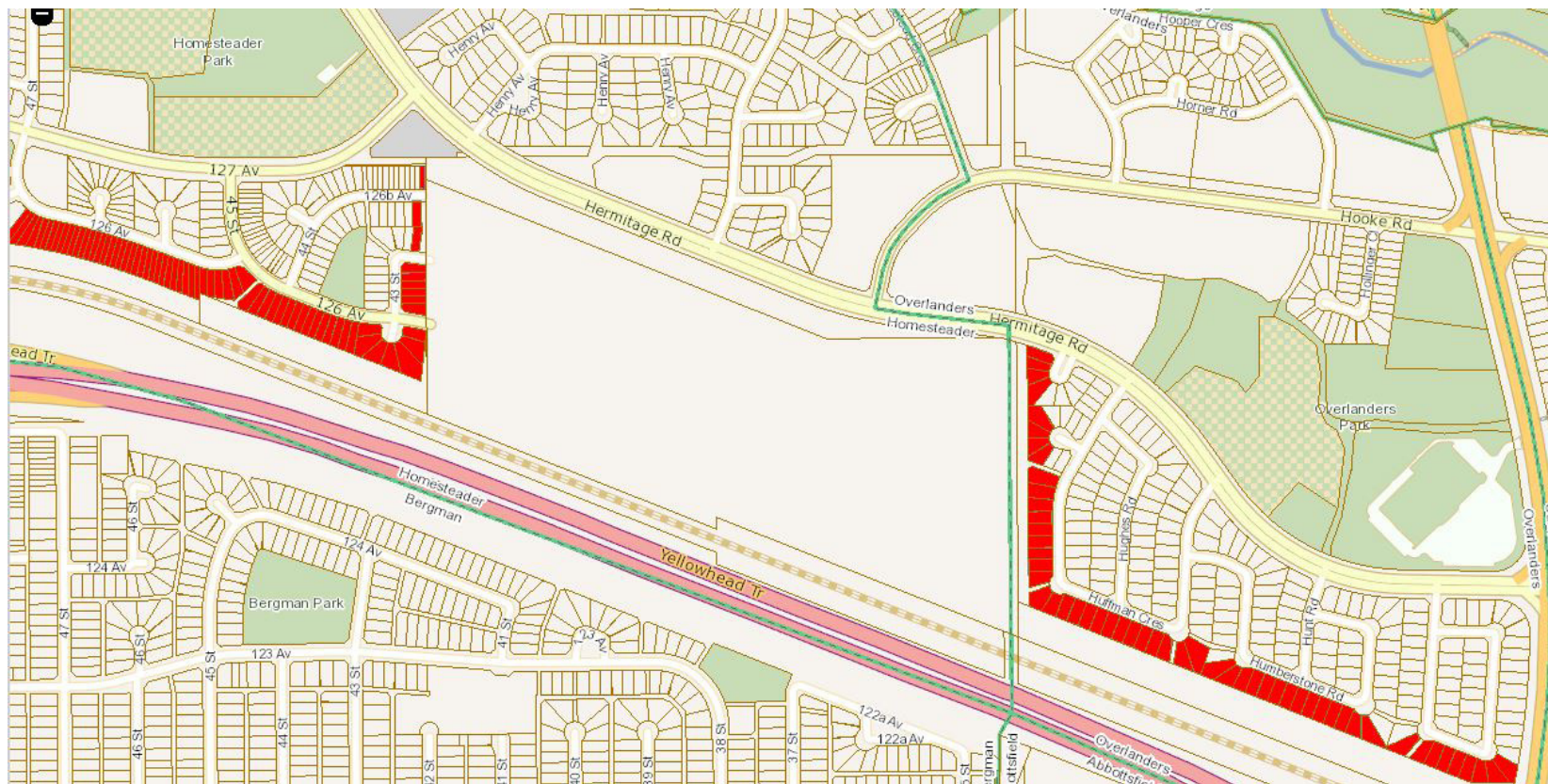
Study Area 3244: Westridge



Westridge East (3244)

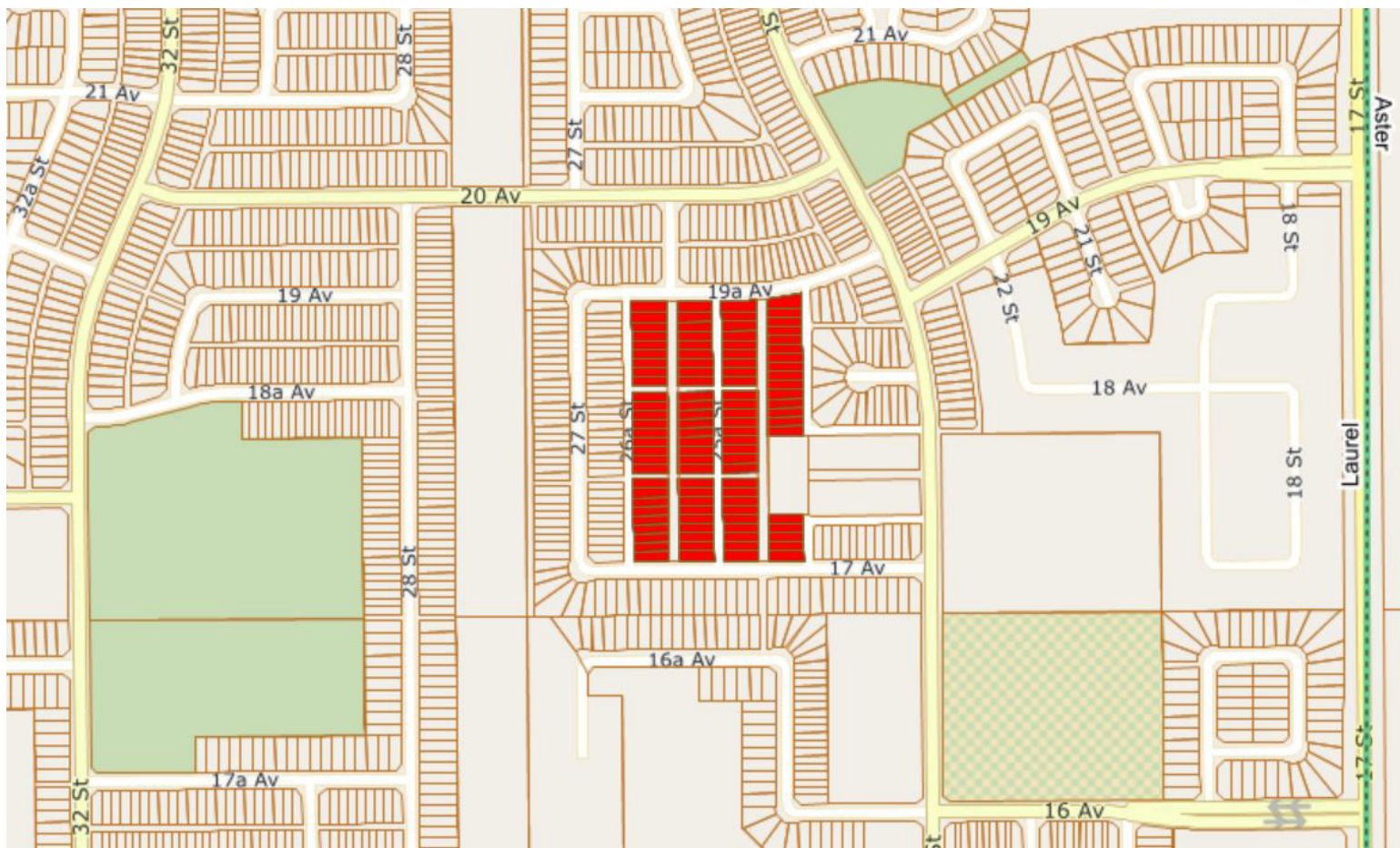
The information provided by this map is for reference purpose only. The City of Edmonton disclaims any liability for the use of this map. This map may not be published, broadcast, redrawn or redistributed in whole or in part without the express written permission of the City of Edmonton, Financial and Corporate Services Department. All rights reserved. Copyright © 2021 The City of Edmonton

Study Area 3246: Homesteader, Overlanders



 Domtar (3246)

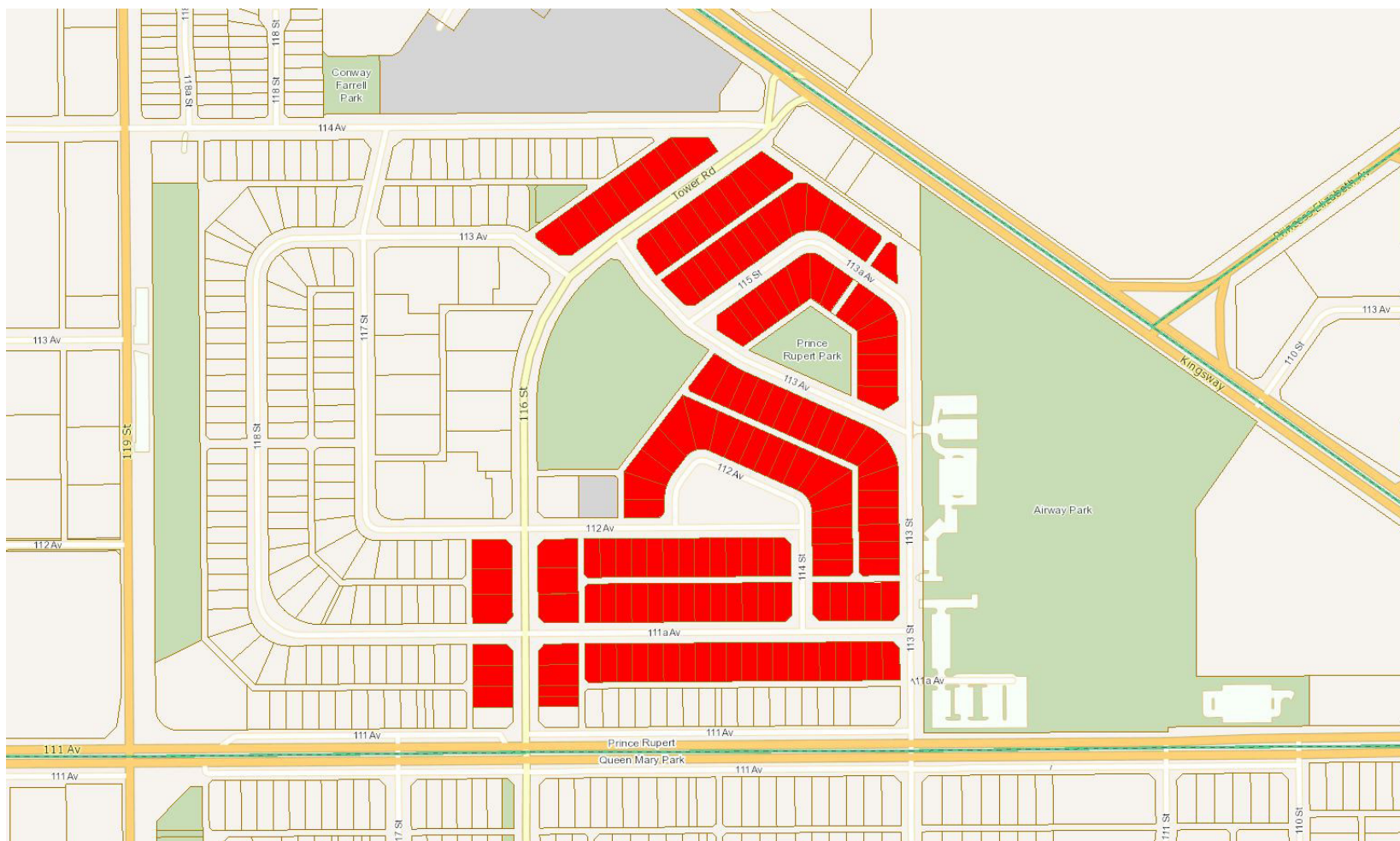
Study Area 3247: Laurel



 Terrace Park (3247)

The information provided by this map is for reference purpose only. The City of Edmonton disclaims any liability for the use of this map. This map may not be published, broadcast, redrawn or redistributed in whole or in part without the express written permission of the City of Edmonton, Financial and Corporate Services Department. All rights reserved. Copyright © 2021 The City of Edmonton

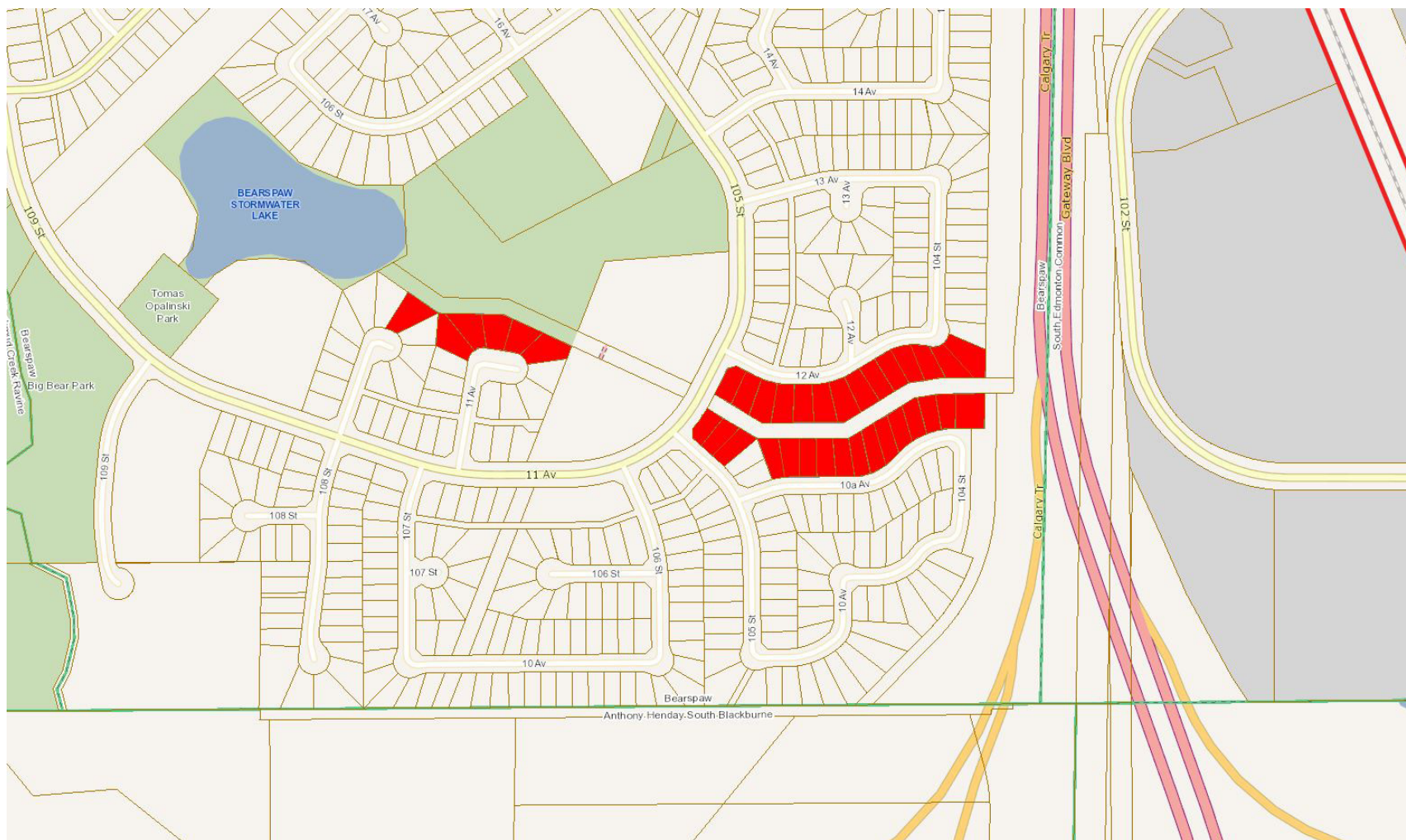
Study Area 3251: Prince Rupert



 Prince Rupert East (3251)

The information provided by this map is for reference purpose only. The City of Edmonton disclaims any liability for the use of this map. This map may not be published, broadcast, redrawn or redistributed in whole or in part without the express written permission of the City of Edmonton, Financial and Corporate Services Department. All rights reserved. Copyright © 2021 The City of Edmonton

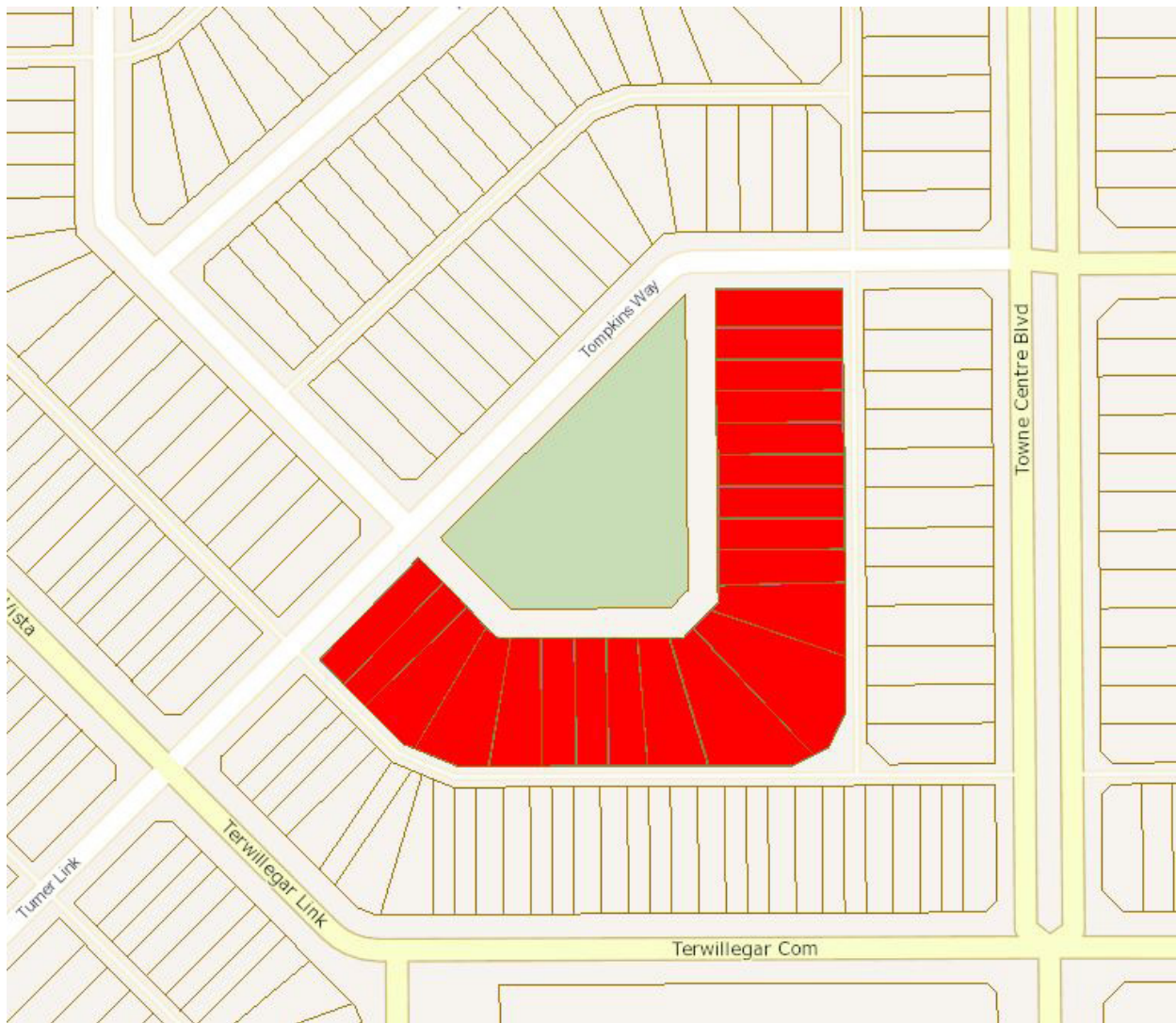
Study Area 3252: Bearspaw




 Bearspaw Creek (3252)

The information provided by this map is for reference purpose only. The City of Edmonton disclaims any liability for the use of this map. This map may not be published, broadcast, redrawn or redistributed in whole or in part without the express written permission of the City of Edmonton, Financial and Corporate Services Department. All rights reserved. Copyright © 2021 The City of Edmonton

Study Area 3253: Terwillegar Towne



 Tompkins Park (3253)

The information provided by this map is for reference purpose only. The City of Edmonton disclaims any liability for the use of this map. This map may not be published, broadcast, redrawn or redistributed in whole or in part without the express written permission of the City of Edmonton, Financial and Corporate Services Department. All rights reserved. Copyright © 2021 The City of Edmonton