

PERFORMANCE

This dashboard provides an overview of progress and performance of the Valley Line West LRT Project and a summary of work completed by Marigold Infrastructure Partners (MIP) and the City.

CUMULATIVE PERFORMANCE

NOTES

COST PERFORMANCE

Measures the cost efficiency of the project

Current cost performance is good. The project remains on budget.

SCHEDULE PROGRESS

Measures the schedule status of the project

Current schedule performance is moderate; however, no key dates have shifted as per latest schedule.

SCOPE PERFORMANCE

Measures the current status of scope changes compared to the baseline scope

There have been no significant changes to either Marigold Infrastructure Partners (MIP) scope of work or other City-contracted scope of work.

PUBLIC COMMUNICATIONS

Most common public inquiries for the period

The most common public inquiries for the period are related to questions about traffic issues, construction impacts, damage claims, access closures and pedestrian access/detours.

RECENT PROGRESS

A summary of construction progress along the alignment. Several examples are showcased in pictures.

Marigold Infrastructure Partners (MIP) work in Q4:

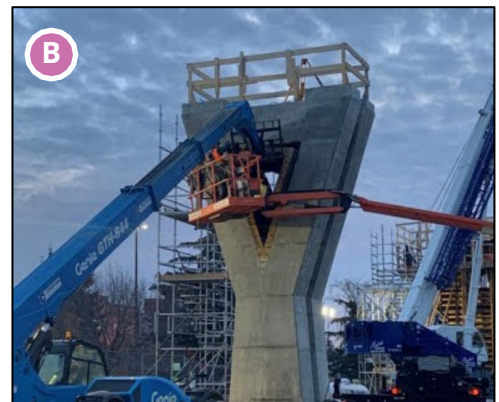
Work continued across the alignment during this quarter. MIP demolished the existing Stony Plain Road Bridge at the end of December, with traffic reopening on Groat Road on January 3 (Photo A). Piers construction continued throughout the period along the Elevated Guideway on 87 Avenue, including Y-piers construction, pile installation, and segmented girder manufacturing (B photos). In Area 4, ongoing drainage and other utility work was underway, including soil cell installation (Photo C). At Gerry Wright OMF-B, the building pad rough grading was completed and CFA pile testing (Photo D) and piling for the building started in December. At Lewis Farms, work was underway on various items, including the southwest Park & Ride, retaining wall, access road, utility work, completion of piling, and commencement of grade beams for the storage facility.

Hyundai-Rotem Company (HRC) work in Q4:

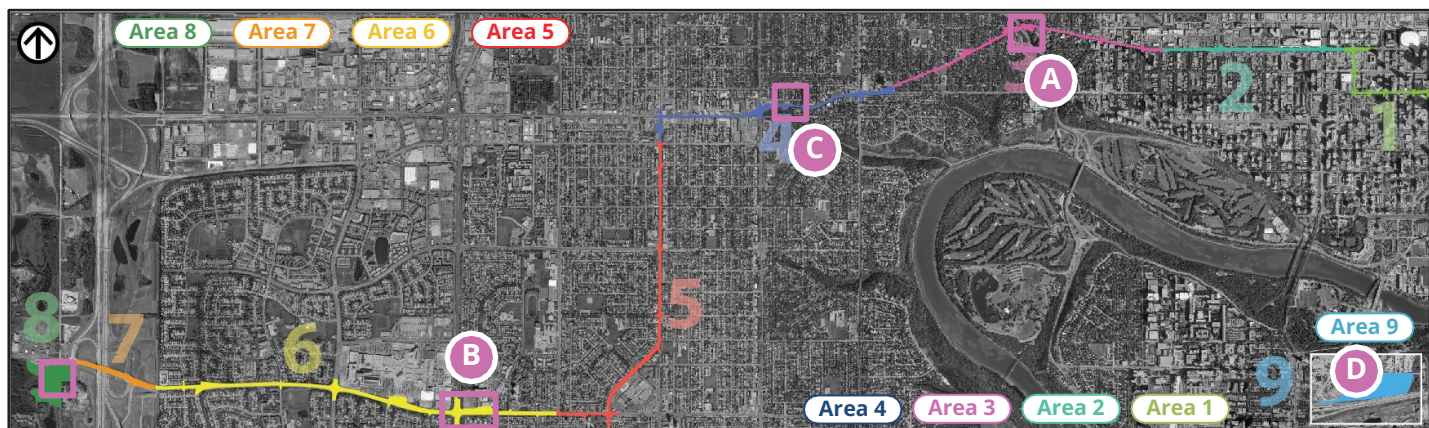
During this quarter, submittal reviews for the Preliminary Design Review were ongoing. In October, HRC visited Edmonton to participate in integration meetings with the City and MIP. Members of the City team visited South Korea in December for preliminary design review (PDR) technical workshops and to view the LRV mock-up and provide initial comments.



Area 3 - Stony Plain Road Bridge Demolition



Area 6 - Elevated Guideway Piers Construction



Area 6 - Elevated Guideway Segmented Girders



Area 6 - Elevated Guideway Pier Caisson Installation



Area 4 - Soil Cell Installation on 153 Street



Area 9 - CFA Pile Testing at Gerry Wright OMF-B

MILESTONES

AREA	COMPLETED MILESTONES	COMPLETION DATE
3	Stony Plain Road Bridge Demolition (commenced Dec 29)	January 3, 2023
6	Piling work along Elevated Guideway	October 2022
6	Erection of gantry crane at Elevated Guideway	December 2022
8	Lewis Farms Storage Facility piling	November 2022
9	Pembina pipeline replacement work	November 2022
LRV	Preliminary Design Review workshops with HRC in South Korea	December 2022
AREA	UPCOMING MILESTONES	FORECASTED DATE
3	Start of piling for Stony Plain Road Bridge	Q1 2023
7	Start of piling for Anthony Henday Drive Bridge west approach	Q1 2023
8	Structural steel erection to commence at Lewis Farms Storage Facility	Q1 2023
LRV	Delivery of the LRV Mock-Up from South Korea	March 2023

KEY ACTIVITY 3-MONTH LOOK-AHEAD

The highlights correspond to the areas of the alignment on the map above.

Area 3: Stony Plain Road Bridge piling to commence.

Areas 4 and 5: Drainage work will continue over the next three months.

Area 6: Y-Piers construction for Elevated Guideway to continue.

Area 7: Preparations for piling on the Anthony Henday Drive Bridge west approach.

Area 8: Lewis Farms site drainage and utilities work to continue. Lewis Farms Storage Facility grade beam

construction to continue and superstructure steel erection to commence.

Area 9: OMF Building B piling to continue.

Light Rail Vehicles (LRVs): Hyundai-Rotem Company (HRC) to visit Edmonton in Jan/Feb for ongoing integration meetings, including with MIP.

Preparations for receiving LRV Mock-Up will be underway throughout Q1.