

PERFORMANCE

This dashboard provides an overview of progress and performance of the Valley Line West LRT Project and a summary of work completed by Marigold Infrastructure Partners (MIP) and the City.

CUMULATIVE PERFORMANCE

NOTES

COST PERFORMANCE

Measures the cost efficiency of the project

Current cost performance is good. The project remains on budget.

SCHEDULE PROGRESS

Measures the schedule status of the project

Current schedule performance is good.

SCOPE PERFORMANCE

Measures the current status of scope changes compared to the baseline scope

There have been no significant changes to either Marigold Infrastructure Partners (MIP) scope of work or other City-contracted scope of work.

PUBLIC COMMUNICATIONS

Most common public inquiries for the period

The most common public inquiries for the period are related to questions about the construction impacts, trees, noise and parking.

RECENT PROGRESS

A summary of construction progress along the alignment. Several examples are showcased in pictures.

Marigold Infrastructure Partners (MIP) work in Q2:

At Lewis Farms, a groundbreaking ceremony for the 2022 construction season was held and work commenced on a retaining wall (Figure A). MIP continued working on the elevated guideway along 87 Avenue in Area 6, including piling and formwork related to construction of the pier mock-up (Figures B). Utility work continued, including sewer installation, relocations of overhead lines to underground and other cabling and cutover work. MIP commenced site preparations at Gerry Wright Operations and Maintenance Facility - Parcel B (Figure D). MIP also continued to work on their designs for stop and stations.

Hyundai-Rotem Company (HRC) work in Q2:

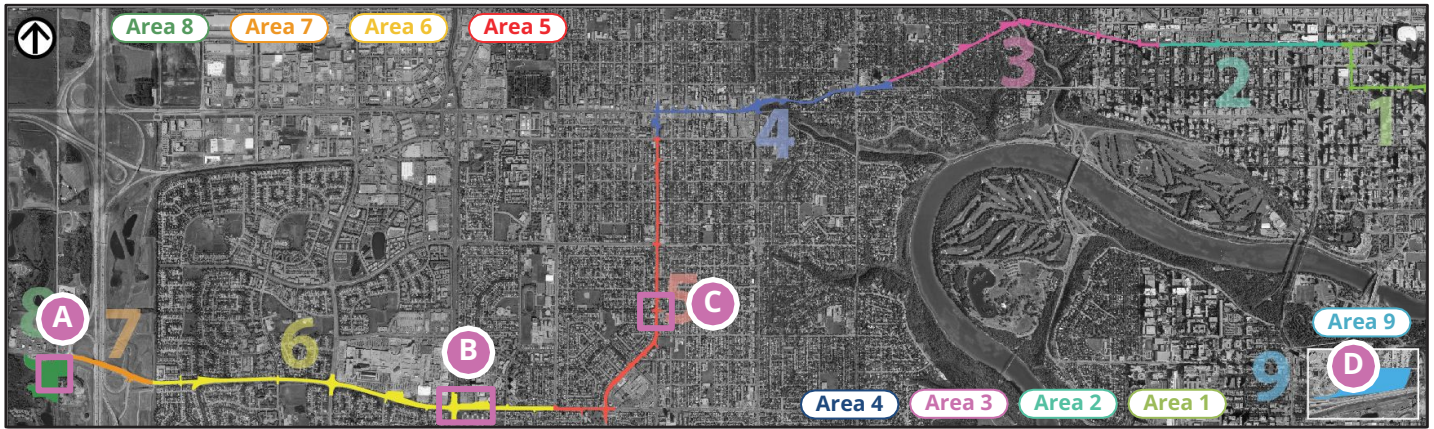
HRC continued LRV (Light Rail Vehicle) design work, with Conceptual Design Review - an early stage of design used in manufacturing to gain alignment on key functionality questions - completed in mid-June. In May, technical team members held meetings in Korea to take part in Conceptual Design Review workshops.



Area 8 - Retaining wall construction at Lewis Farms



Area 8 - Groundbreaking ceremony was held at Lewis Farms



Area 6 - Formwork for pier mock-up



Area 6 - Piling on 87 Avenue (Misericordia)



Area 5 - Sanitary sewer line installation



Area 9 - MIP commenced site preparations at OMF - Parcel B

MILESTONES

| AREA | COMPLETED MILESTONES | COMPLETION DATE |
|------|---|-----------------|
| 6 | Elevated guideway reached 34 piles installed along 87 Avenue | Q2 2022 |
| 8 | Construction groundbreaking event (Figure A) | May 27, 2022 |
| LRV | Hyundai-Rotem reached Conceptual Design Review completion | June 15, 2022 |
| AREA | UPCOMING MILESTONES | FORECASTED DATE |
| 6 | Start of elevated guideway pile caps and piers | Q3 2022 |
| 8 | Start of piled foundations for the Lewis Farms storage facility | Q3 2022 |
| 9 | Ground improvement and grading works at Gerry Wright OMF Parcel B | Q3 2022 |

KEY ACTIVITY 3-MONTH LOOK-AHEAD

The highlights correspond to the areas of the alignment on the map above.

Area 3: Utility work underway, including utility removals Stony Plain Road and underground conversion of aerial power lines.

Area 4: Utility and drainage infrastructure installation to commence in late August.

Area 5: Civil drainage work will focus on crossings, mains and sanitary sewer work. Ongoing utility work is planned to continue throughout the area.

Area 6: Elevated guideway drilled shaft construction to continue through the summer. Drainage construction to commence once design is complete.

Area 8: Retaining wall construction ongoing throughout August. Drainage installation at parking lot to commence in late July. Duct banks construction in Lewis Farms to occur in July.

Area 9: Grading and backfill at Gerry Wright Operations and Maintenance Facility Parcel B to commence in late July. Pembina pipeline replacement work expected to commence in August.

Project-wide: Sidewalk closures or relocations and bus stop relocations across the alignment to continue in July and August.

Light Rail Vehicles (LRVs): Preliminary Design Review phase to continue in Q3.